
OXY GRAND JUNCTION EBUSINESS

**CC 697-10-42C
GRAND VALLEY
Garfield County , Colorado**

Cement Surface Casing

Post Job Report

The Road to Excellence Starts with Safety

Sold To #: 344034	Ship To #: 2809008	Quote #:	Sales Order #: 7656462
Customer: OXY GRAND JUNCTION EBUSINESS	Customer Rep: Silva, Marco		
Well Name: CC	Well #: 697-10-42C	API/UWI #: 05-045-19500	
Field: GRAND VALLEY	City (SAP): PARACHUTE	County/Parish: Garfield	State: Colorado
Lat: N 39.53 deg. OR N 39 deg. 31 min. 46.506 secs.	Long: W 108.213 deg. OR W -109 deg. 47 min. 13.067 secs.		
Contractor: H&P Drilling	Rig/Platform Name/Num: H&P 353		
Job Purpose: Cement Surface Casing			
Well Type: Development Well	Job Type: Cement Surface Casing		
Sales Person: DUNNING, DUSTIN	Srv Supervisor: MILLER, KEVIN	MBU ID Emp #: 443040	

Job Personnel

HES Emp Name	Exp Hrs	Emp #	HES Emp Name	Exp Hrs	Emp #	HES Emp Name	Exp Hrs	Emp #
BEAGLEY, JEFFREY Allen	31	476070	HOEFER, BRYAN D	31	415775	LYNGSTAD, FREDRICK D	31	403742
MILLER, KEVIN Paul	31	443040						

Equipment

HES Unit #	Distance-1 way	HES Unit #	Distance-1 way	HES Unit #	Distance-1 way	HES Unit #	Distance-1 way
10722398	120 mile	10822535	120 mile	10872429	120 mile	11139330	120 mile
11259885	120 mile	11360883	120 mile				

Job Hours

Date	On Location Hours	Operating Hours	Date	On Location Hours	Operating Hours	Date	On Location Hours	Operating Hours
9/25/10	24	7	9/26/10	20	5			

TOTAL	Total is the sum of each column separately							
-------	--	--	--	--	--	--	--	--

Job

Job Times

Formation Name				Date	Time	Time Zone
Formation Depth (MD)	Top	Bottom		Called Out		
Form Type	BHST			On Location	25 - Sep - 2010	08:00 MST
Job depth MD	2723. ft	Job Depth TVD	2723. ft	Job Started	25 - Sep - 2010	17:57 MST
Water Depth		Wk Ht Above Floor	4. ft	Job Completed	26 - Sep - 2010	18:51 MST
Perforation Depth (MD)	From	To		Departed Loc		

Well Data

Description	New / Used	Max pressure psig	Size in	ID in	Weight lbm/ft	Thread	Grade	Top MD ft	Bottom MD ft	Top TVD ft	Bottom TVD ft
-------------	------------	-------------------	---------	-------	---------------	--------	-------	-----------	--------------	------------	---------------

Sales/Rental/3rd Party (HES)

Description	Qty	Qty uom	Depth	Supplier
PLUG,CMTG,TOP,9 5/8,HWE,8.16 MIN/9.06 MA	1	EA		
R/A DENSOMETER W/CHART RECORDER,/JOB,ZI	1	JOB		
PORT. DATA ACQUIS. W/OPTICEM RT W/HES	1	EA		
ADC (AUTO DENSITY CTRL) SYS, /JOB,ZI	1	JOB		

Tools and Accessories

Type	Size	Qty	Make	Depth	Type	Size	Qty	Make	Depth	Type	Size	Qty	Make
Guide Shoe					Packer					Top Plug	9.625	1	HES
Float Shoe					Bridge Plug					Bottom Plug			
Float Collar					Retainer					SSR plug set			
Insert Float										Plug Container	9.625	1	HES
Stage Tool										Centralizers			

Miscellaneous Materials

Gelling Agt	Conc	Surfactant	Conc	Acid Type	Qty	Conc	%
Treatment Fld	Conc	Inhibitor	Conc	Sand Type	Size	Qty	

Fluid Data									
Stage/Plug #: 1									
Fluid #	Stage Type	Fluid Name	Qty	Qty uom	Mixing Density lbm/gal	Yield ft ³ /sk	Mix Fluid Gal/sk	Rate bbl/min	Total Mix Fluid Gal/sk
1	Water Spacer		20.00	bbl	8.33	.0	.0	.0	
2	Super Flush 101	SUPER FLUSH 101 - SBM (12199)	20.00	bbl	10.	.0	.0	.0	
3	Water Spacer		20.00	bbl	.	.0	.0	.0	
4	VersaCem Lead Slurry	VERSACEM (TM) SYSTEM (452010)	1055.0	sacks	12.3	2.33	12.62		12.62
12.62 Gal		FRESH WATER							
5	Tail Cement	VERSACEM (TM) SYSTEM (452010)	160.0	sacks	12.8	2.07	10.67		10.67
10.67 Gal		FRESH WATER							
6	Displacement		207.00	bbl	.	.0	.0	.0	
7	Topout Cement	HALCEM (TM) SYSTEM (452986)	497.0	sacks	12.5	1.97	10.96		10.96
10.96 Gal		FRESH WATER							
Calculated Values		Pressures		Volumes					
Displacement	206.3	Shut In: Instant		Lost Returns	763	Cement Slurry	691	Pad	
Top Of Cement	SURFACE	5 Min		Cement Returns		Actual Displacement	206.5	Treatment	
Frac Gradient		15 Min		Spacers		Load and Breakdown		Total Job	
Rates									
Circulating	6	Mixing	6	Displacement	6	Avg. Job	6		
Cement Left In Pipe	Amount	54.43 ft	Reason	Shoe Joint					
Frac Ring # 1 @	ID	Frac ring # 2 @	ID	Frac Ring # 3 @	ID	Frac Ring # 4 @	ID		
The Information Stated Herein Is Correct				Customer Representative Signature					

The Road to Excellence Starts with Safety

Sold To #: 344034		Ship To #: 2809008		Quote #:		Sales Order #: 7656462	
Customer: OXY GRAND JUNCTION EBUSINESS				Customer Rep: Silva, Marco			
Well Name: CC			Well #: 697-10-42C			API/UWI #: 05-045-19500	
Field: GRAND VALLEY		City (SAP): PARACHUTE		County/Parish: Garfield		State: Colorado	
Legal Description:							
Lat: N 39.53 deg. OR N 39 deg. 31 min. 46.506 secs.				Long: W 108.213 deg. OR W -109 deg. 47 min. 13.067 secs.			
Contractor: H&P Drilling			Rig/Platform Name/Num: H&P 353				
Job Purpose: Cement Surface Casing						Ticket Amount:	
Well Type: Development Well			Job Type: Cement Surface Casing				
Sales Person: DUNNING, DUSTIN			Srv Supervisor: MILLER, KEVIN			MBU ID Emp #: 443040	

Activity Description	Date/Time	Cht #	Rate bbl/min	Volume bbl		Pressure psig		Comments
				Stage	Total	Tubing	Casing	
Assessment Of Location Safety Meeting	09/25/2010 13:00							ALL HES PERSONEL, SUPERFLUSH TRANSPORT ON LOCATION
Rig-Up Equipment	09/25/2010 13:15							1- CEMENTERS F-550, 1- ELITE PUMP TRUCK, 1- 1600 FIELD STORAGE BIN, 1- BULK 660, 1- BULK 660 (TOPOUT), 1- SUPERFLUSH TRANSPORT
Rig-Up Completed	09/25/2010 15:45							
Pre-Job Safety Meeting	09/25/2010 17:30							ALL HES PERSONEL AND RIG CREW
Start Job	09/25/2010 17:57							TD-2735, TP- 2723, SJ- 54.43, CSG- 9.625 36#, OH- 14.75, MUD- 9.1, RIG LOST RETURNS @ 596' WHILE DRILLING
Pressure Test	09/25/2010 18:02							ALL LINES HELD PRESSURE AT 3500 PSI
Pump Spacer 1	09/25/2010 18:08		6	20			200.0	FRESH WATER
Pump Spacer 2	09/25/2010 18:13		6	20			126.0	SUPERFLUSH, SPROKET COUNTER REFLECTS 35 BBLS PUMPED DUE TO PUMP CAVITATION, ACTUAL BBL COUNT WAS 20 DOWNHOLE
Pump Spacer 1	09/25/2010 18:13		6	20			200.0	FRESH WATER

Activity Description	Date/Time	Cht #	Rate bbl/min	Volume bbl		Pressure psig		Comments
				Stage	Total	Tubing	Casing	
Pump Lead Cement	09/25/2010 18:26		6	460			360.0	1055SK, 12.3 PPG, 2.33FT3/SK, 12.62 GAL/SK, SET TIME- 4:45 @ 70 BC, PUMPS CAVITATED DUE TO LCM IN CMT, SO I CALCULATED MIX H2O COMING INTO MIX TUB TO CALCULATE RATE. CHART REFLECTS 7 BBLS/ MIN ON SPROCKET CNTR WHEN WE WERE PUMPING AT 6 BBL/MIN DOWNHOLE
Pump Tail Cement	09/25/2010 19:33		6	57			375.0	160SKS, 12.8 PPG, 2.07 FT3/SK, 10.67 GAL/SK, SET TIME 4:28 @ 70 BC
Shutdown	09/25/2010 19:41							SHUT DOWN/ DROP PLUG ON THE FLY
Pump Displacement	09/25/2010 19:42		6	206.5			500.0	FRESH WATER
Slow Rate	09/25/2010 20:16		3	196			470.0	ALSO SLOWED RATE TO 4 BBL/MIN AT 170 AWAY TO LET CEMENT BUILD GEL STRENGTH. LIFT PRESSURE WAS GOOD THROUGHOUT JOB
Bump Plug	09/25/2010 20:19		3	206.5			470.0	PLUS 500 OVER, FINISHED WITH SUPERFLUSH TRANSPORT
Check Floats	09/25/2010 20:25							FLOATS HELD
Clean Lines	09/25/2010 20:30							CLEAN LINES TO PIT
Pump Water	09/25/2010 20:48		2	12		500.0		10 LBS OF SUGAR IN WATER TO FLUSH PARASITE LINE, PRESSURED UP TO 500 PSI AND THEN BROKE FREE, CIRCULATED UP THROUGH CASING

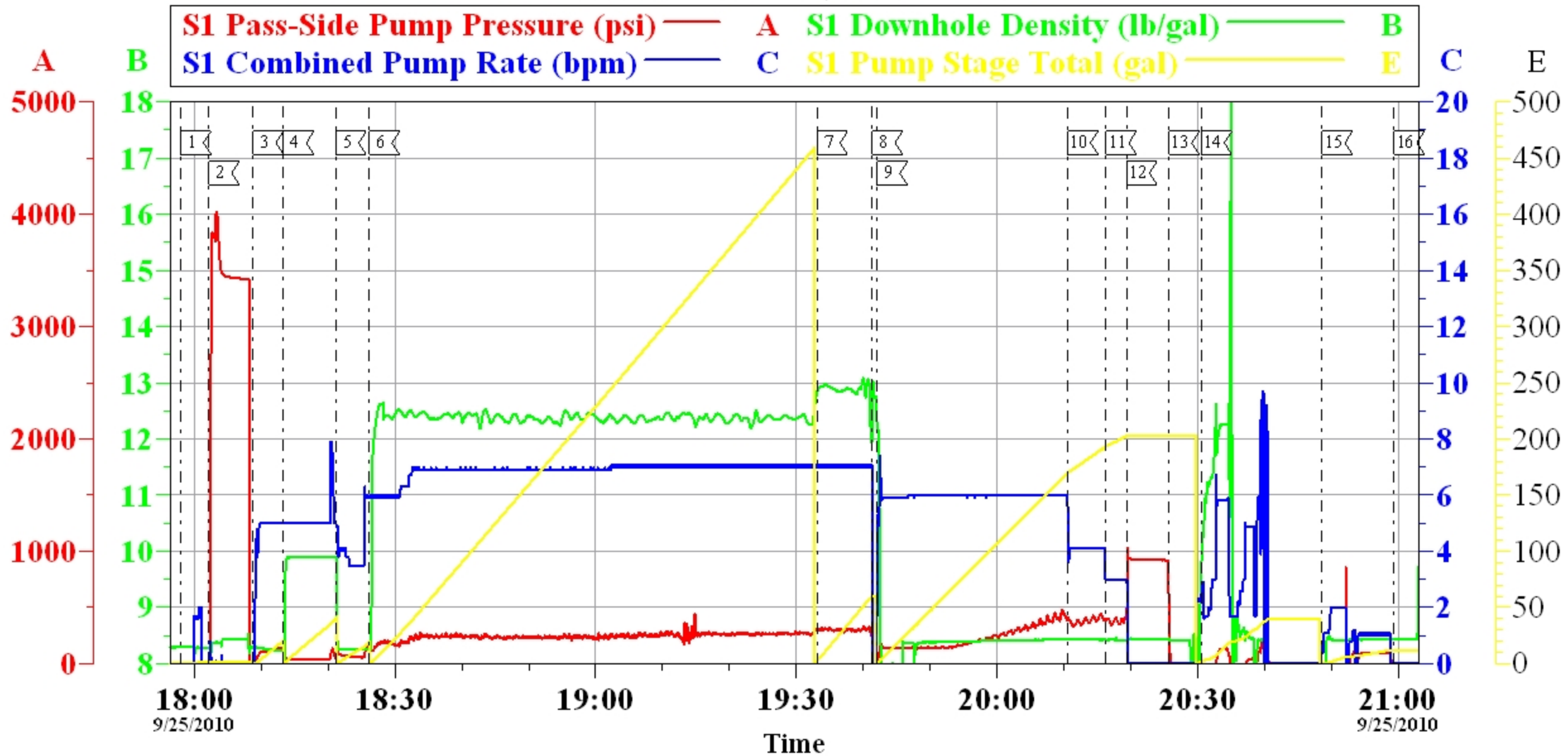
Activity Description	Date/Time	Cht #	Rate bbl/min	Volume bbl		Pressure psig		Comments
				Stage	Total	Tubing	Casing	
End Job	09/25/2010 20:59							
Wait on Customer or Customer Sub-Contractor Equip	09/25/2010 21:00							WAITING TO TOP OUT AFTER RIG SKIDS, MOVED TRUCKS OUT OF RIGS WAY SO THEY HAD ROOM TO SKID, RE RIGGED UP TO TOPOUT OUT OF THE WAY.
Pre-Job Safety Meeting	09/25/2010 23:50							ALL HES PERSONEL AND RIG CREW
Pump Spacer 1	09/26/2010 00:03		1	1			25.0	MAKE SURE TUBING IS CLEAR
Pump Cement	09/26/2010 00:04		3.5	66			175.0	188 SKS, 12.5 PPG, 1.97 FT3/SK, 10.96 GAL/SK , TOP OUT CEMENT WAS BROUGHT OVER FROM OXY'S OTHER RIG H&P 330 AND HAS ALREADY BEEN CHARGED AND PAID FOR
Pump Displacement	09/26/2010 00:28		1	1			145.0	CLEAR LINES
Other	09/26/2010 00:38							SHUT DOWN/ WAIT FOR NEXT TOP JOB/ WASH PUMP TRUCK TO PIT
Pump Spacer 1	09/26/2010 01:58		1	1			26.0	MAKE SURE TUBING IS CLEAR
Pump Cement	09/26/2010 02:00		3.5	25			180.0	72 SKS, 12.5 PPG, 1.97 FT3/SK, 10.96 GAL/SK , TOP OUT CEMENT
Pump Displacement	09/26/2010 02:09		1	1			150.0	CLEAR LINES
Other	09/26/2010 02:10							SHUT DOWN/ WAIT FOR NEXT TOP JOB/ WASH PUMP TRUCK TO PIT
Pump Spacer 1	09/26/2010 03:58		1	1			25.0	MAKE SURE TUBING IS CLEAR
Pump Cement	09/26/2010 03:59		3.5	57			180.0	162 SKS, 12.5 PPG, 1.97 FT3/SK, 10.96 GAL/SK , TOP OUT CEMENT

Activity Description	Date/Time	Cht #	Rate bbl/min	Volume bbl		Pressure psig		Comments
				Stage	Total	Tubing	Casing	
Pump Displacement	09/26/2010 04:17		1	1			145.0	CLEAR LINES
Other	09/26/2010 04:18							SHUT DOWN/ WAIT FOR NEXT TOP JOB/ WASH PUMP TRUCK TO PIT/ WAIT FOR MORE CEMENT TO GET TO LOCATION
Pump Spacer 1	09/26/2010 16:34		1	1			25.0	MAKE SURE TUBING IS CLEAR
Pump Cement	09/26/2010 16:36		3.5	22			190.0	63 SKS, 12.5 PPG, 1.97 FT3/SK, 10.96 GAL/SK , TOPOUT CEMENT, 8 BBLS THAT WAS LEFT OVER IN TUB WAS PUMPED TO PIT (22 SKS) ALL 350 SKS OF TOPOUT CMT ON LOCATION ARE BEING CHARGED FOR ON THIS TICKET REGARDLESS OF USE, IT WON'T BE CHARGED ON FUTURE TICKETS
Pump Displacement	09/26/2010 16:42		1	1			150.0	CLEAR LINES
Other	09/26/2010 16:44							SHUT DOWN/ WASH TRUCK, GOT CEMENT TO SURFACE, IT IS FALLING SLOWLY SO WE WILL TOP IT OFF IN 1 HOUR
Pump Cement	09/26/2010 18:41		2	4			120.0	12 SKS, 12.5 PPG, 1.97 FT3/SK, 10.96 GAL/SK , TOP OUT CEMENT, GOT CEMENT TO SURFACE, IT HAD ONLY FALLEN 3 FEET, DENSITY APEARS ERRATIC DUE TO LOW RATE THROUGH DOWNHOLE MASS FLOW METER, LEAVING TOP OUT SWADGE ON LOCATION

Activity Description	Date/Time	Cht #	Rate bbl/ min	Volume bbl		Pressure psig		Comments
				Stage	Total	Tubing	Casing	
Pump Displacement	09/26/2010 18:42		1	1			45.0	CLEAN LINES
End Job	09/26/2010 18:51							WASH PUMP AND LINES TO PIT, LEAVING 275 SKS OF TOPOUT CEMENT ON LOCATION ON TRUCK # 10897891 TRAILER # 10784080
Pre-Rig Down Safety Meeting	09/26/2010 19:00							ALL HES PERSONEL
Rig-Down Completed	09/26/2010 20:00							
Pre-Convoy Safety Meeting	09/26/2010 21:00							ALL HES PERSONEL
Crew Leave Location	09/26/2010 21:30							
Other	09/26/2010 21:31							THANK YOU FOR CHOOSING HALLIBURTON, KEVIN MILLER AND CREW

OXY

CC 697-10-42C, SURFACE



Maximum		SPPP		Maximum		SPPP		Maximum		SPPP	
1	START JOB	17:57:56	14.30	2	PRESSURE TEST	18:02:11	4022	3	H2O SPACER	18:08:47	140.3
4	SUPERFLUSH	18:13:20	135.3	5	H2O SPACER	18:21:09	153.3	6	LEAD CEMENT	18:26:08	444.3
7	TAIL CEMENT	19:33:07	334.3	8	SHUTDOWN/ DROP PLUG	19:41:21	232.3	9	PUMP DISPLACEMENT	19:42:05	478.3
10	SLOW RATE	20:10:34	445.3	11	SLOW RATE	20:16:18	410.3	12	BUMP PLUG	20:19:23	1024
13	CHECK FLOATS	20:25:43	496.3	14	WASH TRUCK	20:30:34	238.3	15	PUMP THROUGH PARASITE	20:48:37	858.3
16	END JOB	20:59:21	-21.70								

Customer: OXY
Well Description: CC 697-10-42C
Customer Rep: PAT DILLON

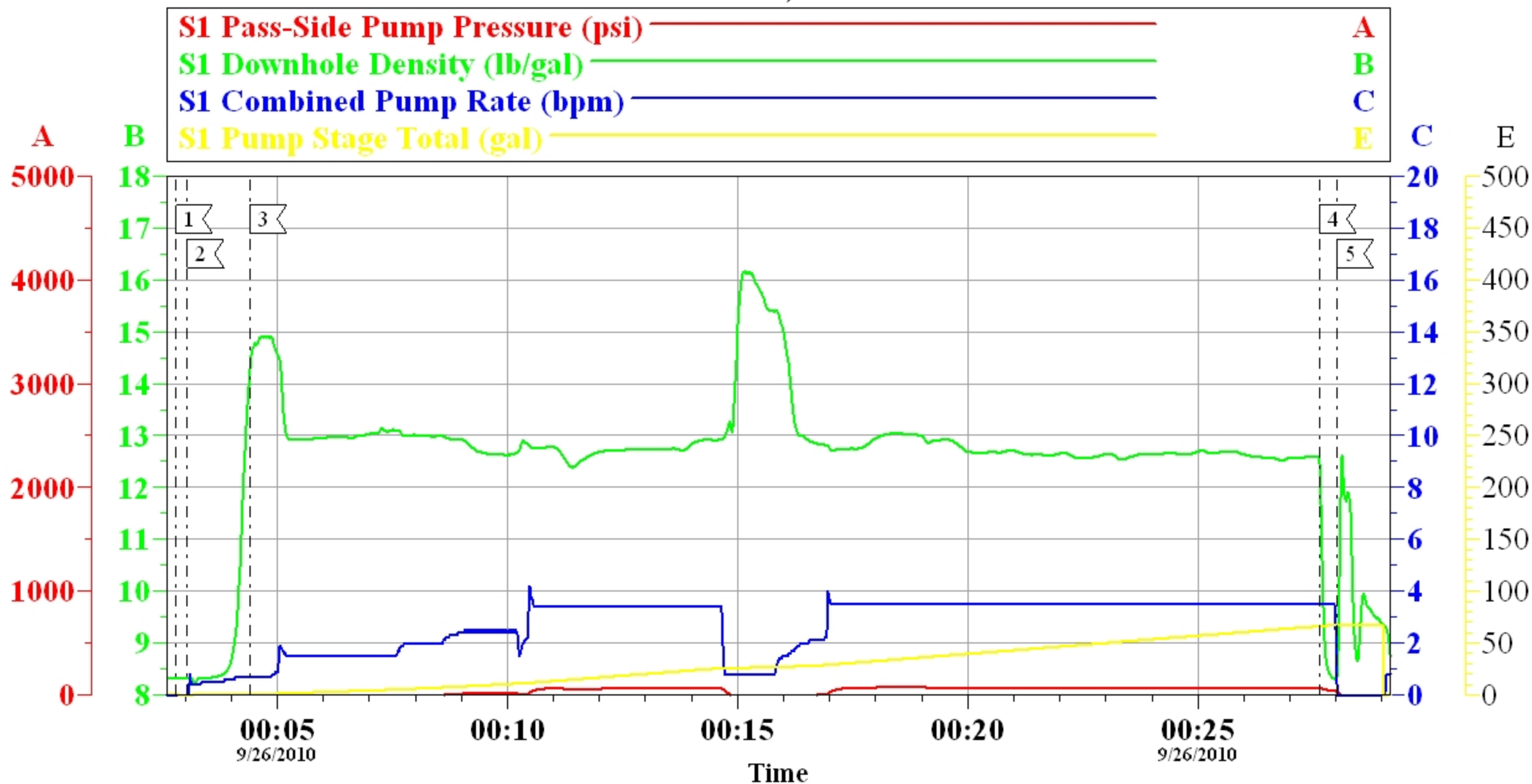
Job Date: 25-Sep-2010
Job type: SURFACE
Service Supervisor: KEVIN MILLER

Sales Order #: 7656462
ADC USED: YES
Operator/ Pump: 7/ B. HOEFER

OptiCem v6.4.6
25-Sep-10 22:03

OXY

CC 697-10-42C, TOP OUT # 1



Local Event Log					
	Maximum		SPPP	Maximum	SPPP
1	START JOB	00:02:48	-37.70	2	H2O AHEAD 00:03:03 -36.70
3	TOPOUT CEMENT	00:04:25	74.30	4	H2O BEHIND 00:27:38 59.30
5	SHUT DOWN/ END JOB	00:28:01	28.30		

Customer: OXY
Well Description: CC 697-10-42C
Customer Rep: PAT DILLON

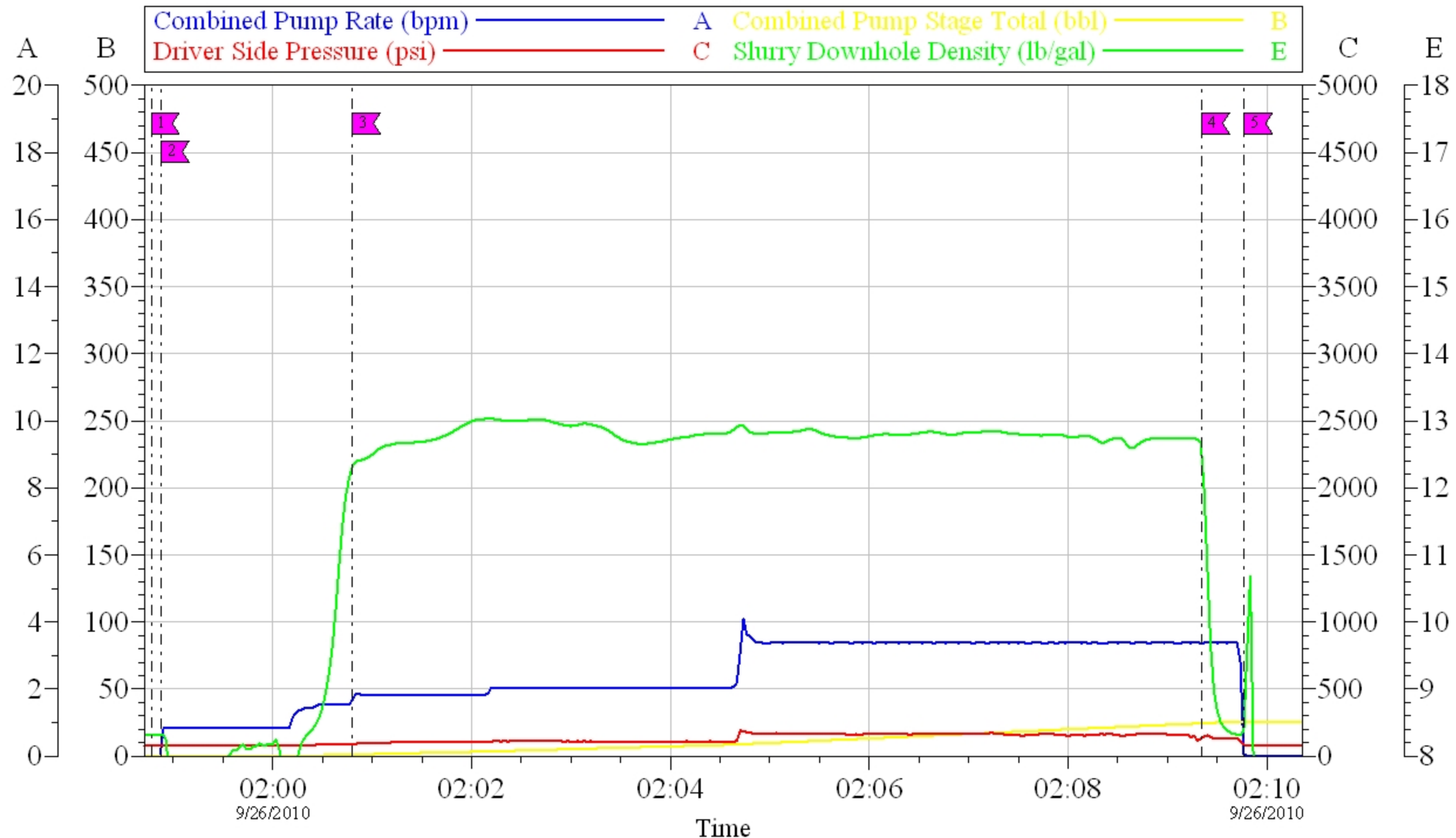
Job Date: 25-Sep-2010
Job type: TOP OUT
Service Supervisor: KEVIN MILLER

Sales Order #: 7656462
ADC Used: YES
Operator/ Pump: B. HOEFER/ 7

OptiCem v6.4.6
26-Sep-10 00:33

OXY

CC 697-10-42C, TOP OUT #2



Local Event Log					
1	START JOB	01:58:47	2	H2O AHEAD	01:58:53
3	TOP OUT CEMENT	02:00:48	4	H2O BEHIND	02:09:21
5	SHUT DOWN/ END JOB	02:09:46			

Customer: Halliburton
Well Description: RTD

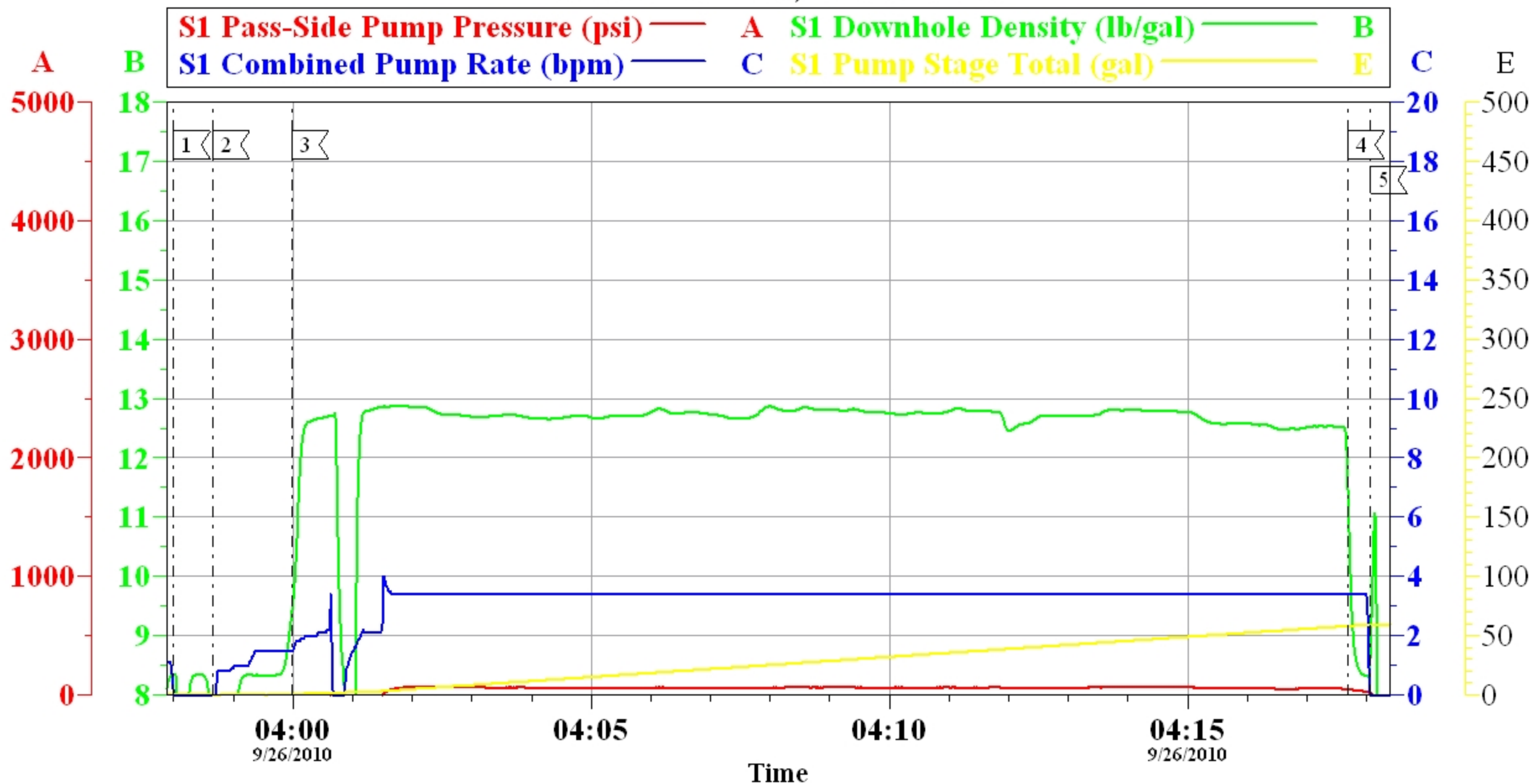
Job Date: 26-Sep-2010
UWI:

Sales Order #: 01:56:52

OptiCem v6.4.6
26-Sep-10 02:41

OXY

CC 697-10-42C, TOPOUT #3



Local Event Log							
Maximum			SPPP	Maximum			SPPP
1	START JOB	03:58:00	-35.70	2	H2O AHEAD	03:58:40	-28.70
3	TOPOUT CEMENT	03:59:59	66.30	4	H2O BEHIND	04:17:41	45.30
5	SHUTDOWN/ END JOB	04:18:04	16.30				

Customer: OXY
Well Description: CC 697-10-42C
Customer Rep: PAT DILLON

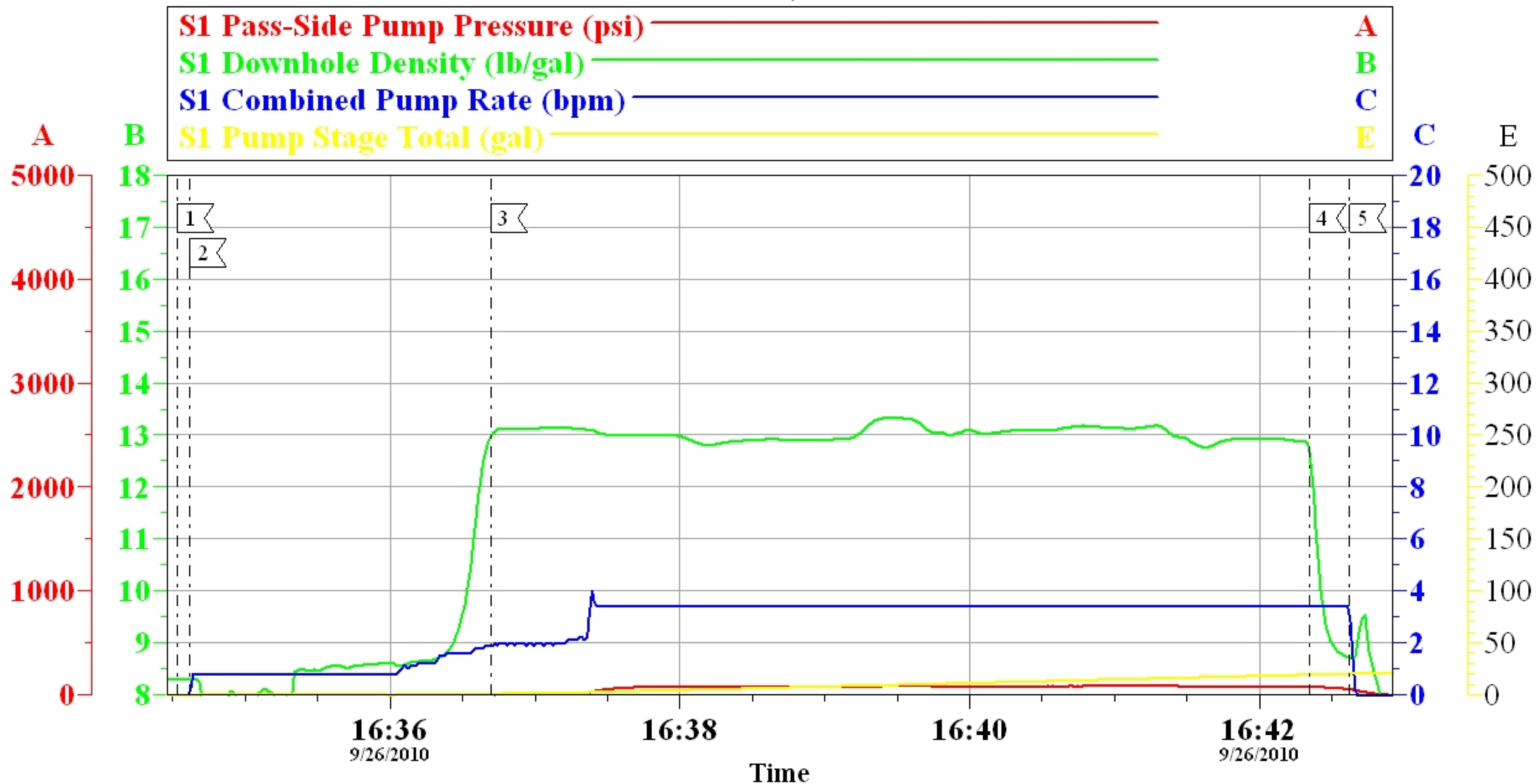
Job Date: 26-Sep-2010
Job type: TOP OUT #3
Service Supervisor: KEVIN MILLER

Sales Order #: 7656462
ADC Used: YES
Operator/ Pump: B. HOEFER/ 7

OptiCem v6.4.6
26-Sep-10 04:23

OXY

CC 697-10-42C, TOP OUT# 4



Local Event Log					
	Maximum		SPPP	Maximum	SPPP
1	START JOB	16:34:32	-14.70	2	H2O AHEAD 16:34:37 -1.696
3	TOPOUT CEMENT	16:36:42	85.30	4	H2O BEHIND 16:42:21 77.30
5	SHUT DOWN/ END JOB	16:42:37	653.3		

Customer: OXY
Well Description: CC 697-10-42C
Customer Rep: OAT DILLON

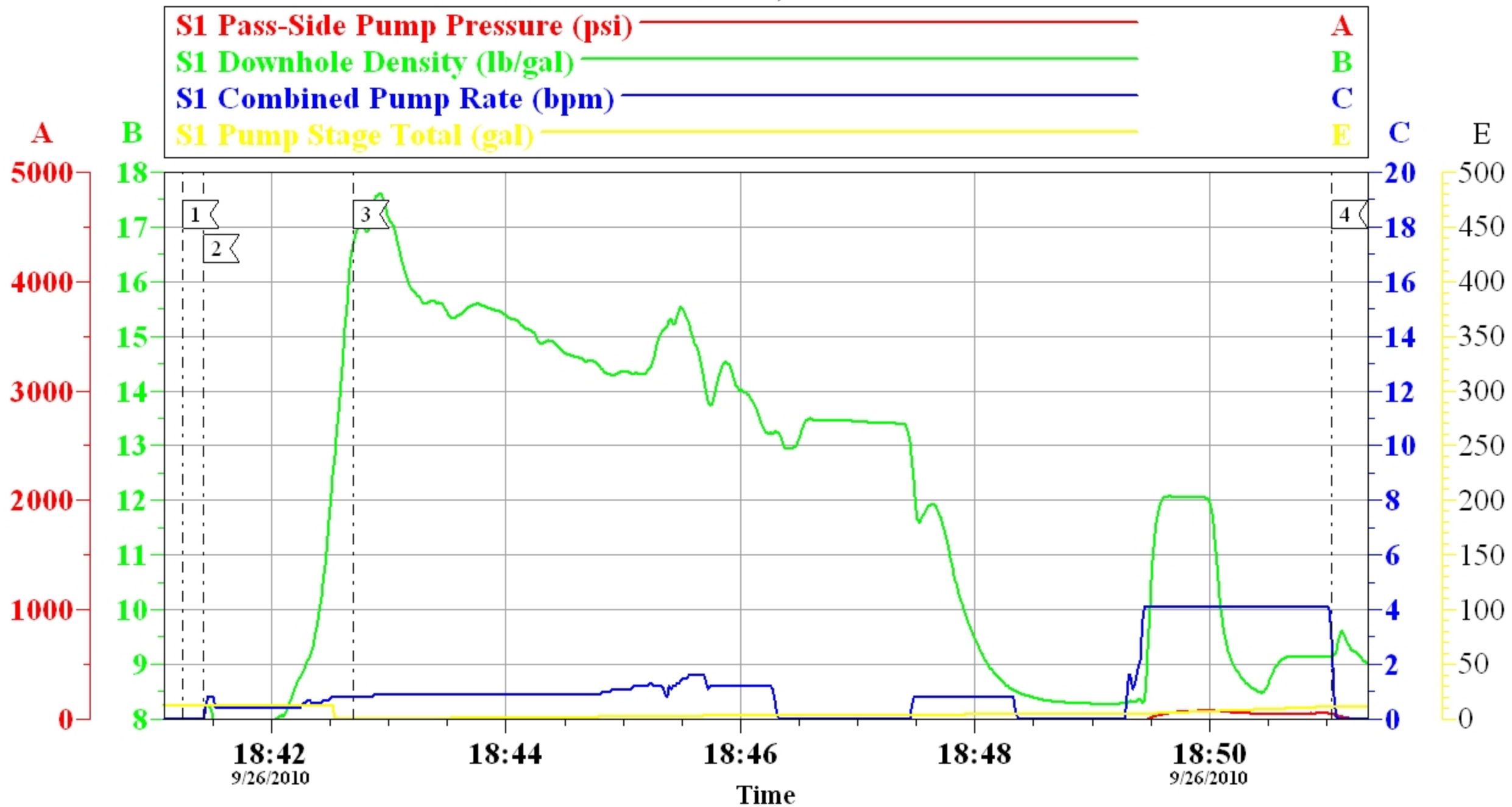
Job Date: 26-Sep-2010
Job type: TOPOUT # 4
Service Supervisor: KEVIN MILLER

Sales Order #: 7656462
ADC Used: YES
Operator/ Pump: B. HOEFER/ 7

OptiCem v6.4.6
26-Sep-10 18:09

OXY

CC 697-10-42C, TOPOUT # 5



Local Event Log					
Maximum			Maximum		
		SPPP			SPPP
1	START JOB	18:41:15 -20.70	2	TOPOUT CEMENT	18:41:25 -20.70
3	H2O BEHIND	18:42:42 78.30	4	SHUTDOWN/ END JOB	18:51:02 52.30

Customer: OXY
Well Description: CC-697-10-42C
Customer Rep: PAT DILLON

Job Date: 26-Sep-2010
Job type: TOPOUT # 5
Service Supervisor: KEVIN MILLER

Sales Order #: 7656462
ADC Used: YES
Operator/ Pump: B. HOEFFER/ 7

OptiCem v6.4.6
26-Sep-10 18:53