



**Bill Barrett Corporation**

## **Bill Barrett Corp.**

Garfield County, Colorado

MDP 6 Pad

GGU Miller Fed 34A-32-691

Wellbore #1

Survey: Surveys

## **Standard Survey Report**

10 November, 2010



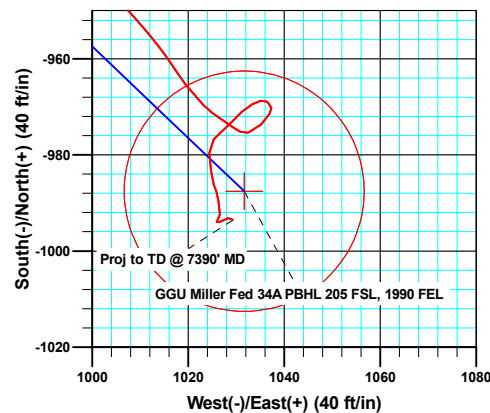
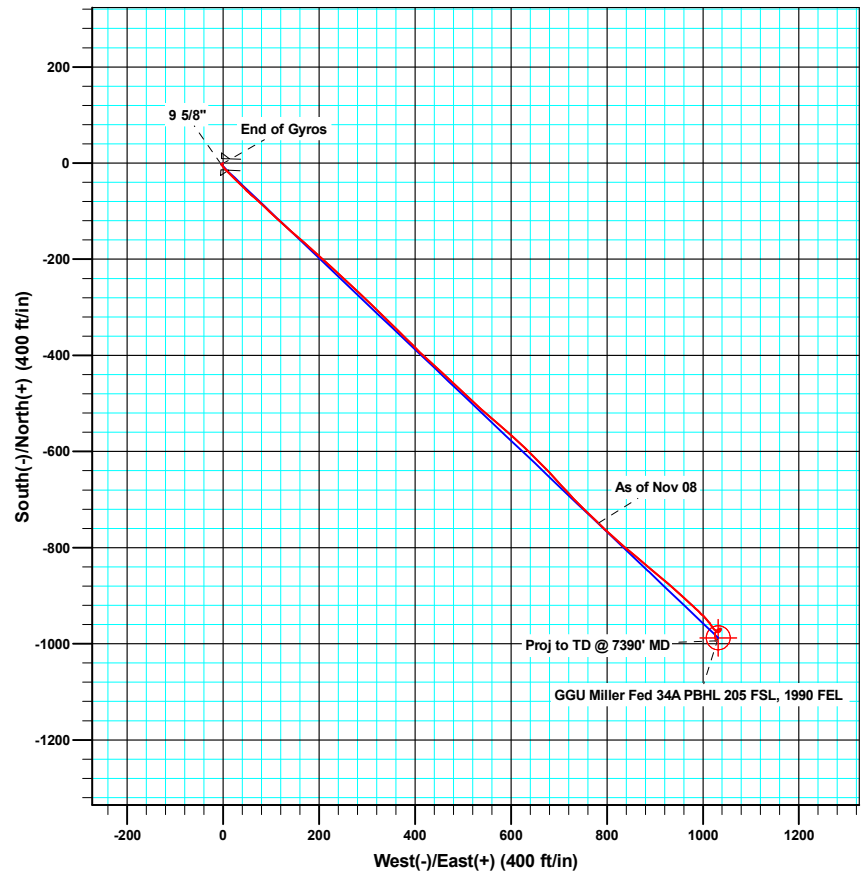
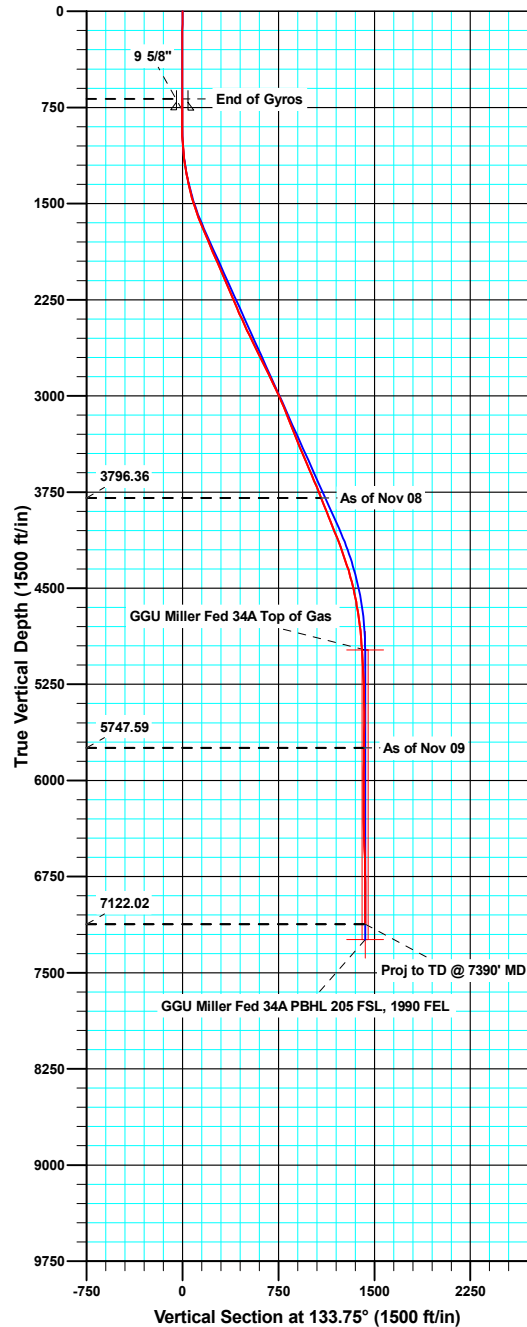


**Bill Barrett Corporation**

WELL DETAILS: GGU Miller Fed 34A-32-691

Ground Level: 6120.00

North American Datum 1983			US State Plane 1983			Colorado Central Zone	
+N/-S	+E/-W	Northing	Easting	Latitude	Longitude		
0.00	0.00	1606570.06	2413271.09	39° 28' 49.36 N	107° 34' 43.83 W		



Azimuths to True North  
Magnetic North: 10.22°

Magnetic Field  
Strength: 52392.4nT  
Dip Angle: 65.83°  
Date: 10/14/2010  
Model: IGRF200510

#### ANNOTATIONS

TVD	MD	Inc	Azi	+N/-S	+E/-W	Vsect	Departure	Annotation
3796.36	4013.00	21.50	133.80	-749.47	781.82	1083.02	1086.47	As of Nov 08
5747.59	6015.00	0.90	314.10	-968.90	1036.46	1418.71	1434.82	As of Nov 09
7122.02	7390.00	0.40	142.00	-993.59	1029.26	1430.58	1472.75	Proj to TD @ 7390' MD

<b>Company:</b>	Bill Barrett Corp.	<b>Local Co-ordinate Reference:</b>	Well GGU Miller Fed 34A-32-691
<b>Project:</b>	Garfield County, Colorado	<b>TVD Reference:</b>	KB @ 6142.00ft
<b>Site:</b>	MDP 6 Pad	<b>MD Reference:</b>	KB @ 6142.00ft
<b>Well:</b>	GGU Miller Fed 34A-32-691	<b>North Reference:</b>	True
<b>Wellbore:</b>	Wellbore #1	<b>Survey Calculation Method:</b>	Minimum Curvature
<b>Design:</b>	Wellbore #1	<b>Database:</b>	Compass VM

<b>Project</b>	Garfield County, Colorado		
<b>Map System:</b>	US State Plane 1983	<b>System Datum:</b>	Mean Sea Level
<b>Geo Datum:</b>	North American Datum 1983		
<b>Map Zone:</b>	Colorado Central Zone		

<b>Site</b>	MDP 6 Pad		
<b>Site Position:</b>		<b>Northing:</b>	1,606,603.61 usft
<b>From:</b>	Lat/Long	<b>Easting:</b>	2,413,270.17 usft
<b>Position Uncertainty:</b>	0.00 ft	<b>Slot Radius:</b>	1.10 ft
		<b>Latitude:</b>	39° 28' 49.69 N
		<b>Longitude:</b>	107° 34' 43.85 W
		<b>Grid Convergence:</b>	-1.31 °

<b>Well</b>	GGU Miller Fed 34A-32-691		
<b>Well Position</b>	<b>+N/-S</b>	0.00 ft	<b>Northing:</b> 1,606,570.06 usft
	<b>+E/-W</b>	0.00 ft	<b>Easting:</b> 2,413,271.10 usft
<b>Position Uncertainty</b>	0.00 ft	<b>Wellhead Elevation:</b>	ft
		<b>Latitude:</b>	39° 28' 49.36 N
		<b>Longitude:</b>	107° 34' 43.83 W
		<b>Ground Level:</b>	6,120.00 ft

<b>Wellbore</b>	Wellbore #1				
<b>Magnetics</b>	<b>Model Name</b>	<b>Sample Date</b>	<b>Declination (°)</b>	<b>Dip Angle (°)</b>	<b>Field Strength (nT)</b>
	IGRF200510	10/14/10	10.22	65.83	52,392

<b>Design</b>	Wellbore #1				
<b>Audit Notes:</b>					
<b>Version:</b>	1.0	<b>Phase:</b>	ACTUAL	<b>Tie On Depth:</b>	0.00
<b>Vertical Section:</b>	<b>Depth From (TVD) (ft)</b>	<b>+N/-S (ft)</b>	<b>+E/-W (ft)</b>	<b>Direction (°)</b>	
	0.00	0.00	0.00	133.75	

<b>Survey Program</b>	<b>Date</b>	11/10/10			
<b>From (ft)</b>	<b>To (ft)</b>	<b>Survey (Wellbore)</b>	<b>Tool Name</b>	<b>Description</b>	
50.00	685.00	Gyro Surveys (Wellbore #1)	MWD	MWD - Standard	
881.00	7,390.00	Surveys (Wellbore #1)	MWD	MWD - Standard	

<b>Survey</b>										
<b>Measured Depth (ft)</b>	<b>Inclination (°)</b>	<b>Azimuth (°)</b>	<b>Vertical Depth (ft)</b>	<b>+N/-S (ft)</b>	<b>+E/-W (ft)</b>	<b>Vertical Section (ft)</b>	<b>Dogleg Rate (°/100ft)</b>	<b>Build Rate (°/100ft)</b>	<b>Turn Rate (°/100ft)</b>	
685.00	0.25	270.87	684.98	-2.34	-3.72	-1.07	0.00	0.00	0.00	
771.00	0.23	272.65	770.98	-2.33	-4.08	-1.34	0.03	-0.03	2.07	
<b>9 5/8"</b>										
881.00	0.20	275.50	880.98	-2.30	-4.49	-1.65	0.03	-0.03	2.59	
973.00	2.00	132.60	972.97	-3.37	-3.46	-0.17	2.35	1.96	-155.33	
1,065.00	4.70	147.60	1,064.80	-7.64	-0.26	5.09	3.06	2.93	16.30	
1,158.00	7.20	134.50	1,157.30	-14.94	5.94	14.62	3.04	2.69	-14.09	
1,250.00	9.80	135.30	1,248.28	-24.55	15.56	28.22	2.83	2.83	0.87	
1,343.00	12.20	134.60	1,339.56	-37.08	28.12	45.96	2.58	2.58	-0.75	
1,438.00	15.00	134.70	1,431.89	-52.78	44.01	68.29	2.95	2.95	0.11	

<b>Company:</b>	Bill Barrett Corp.	<b>Local Co-ordinate Reference:</b>	Well GGU Miller Fed 34A-32-691
<b>Project:</b>	Garfield County, Colorado	<b>TVD Reference:</b>	KB @ 6142.00ft
<b>Site:</b>	MDP 6 Pad	<b>MD Reference:</b>	KB @ 6142.00ft
<b>Well:</b>	GGU Miller Fed 34A-32-691	<b>North Reference:</b>	True
<b>Wellbore:</b>	Wellbore #1	<b>Survey Calculation Method:</b>	Minimum Curvature
<b>Design:</b>	Wellbore #1	<b>Database:</b>	Compass VM

Survey									
Measured Depth (ft)	Inclination (°)	Azimuth (°)	Vertical Depth (ft)	+N/-S (ft)	+E/-W (ft)	Vertical Section (ft)	Dogleg Rate (°/100ft)	Build Rate (°/100ft)	Turn Rate (°/100ft)
1,534.00	18.20	131.50	1,523.88	-71.45	64.08	95.70	3.47	3.33	-3.33
1,629.00	20.60	133.40	1,613.48	-92.77	87.34	127.24	2.61	2.53	2.00
1,724.00	22.80	131.90	1,701.74	-116.55	113.18	162.35	2.39	2.32	-1.58
1,820.00	23.00	131.80	1,790.18	-141.47	141.01	199.69	0.21	0.21	-0.10
1,915.00	23.20	131.10	1,877.56	-166.14	168.95	236.93	0.36	0.21	-0.74
2,011.00	23.20	131.90	1,965.80	-191.20	197.27	274.72	0.33	0.00	0.83
2,106.00	23.30	133.10	2,053.08	-216.54	224.92	312.21	0.51	0.11	1.26
2,201.00	23.80	131.80	2,140.17	-242.15	252.92	350.15	0.76	0.53	-1.37
2,296.00	23.60	133.10	2,227.16	-267.92	281.10	388.33	0.59	-0.21	1.37
2,391.00	23.10	134.70	2,314.38	-294.02	308.23	425.98	0.85	-0.53	1.68
2,487.00	24.90	133.90	2,402.08	-321.29	336.18	465.02	1.91	1.88	-0.83
2,582.00	25.20	134.40	2,488.14	-349.30	365.04	505.24	0.39	0.32	0.53
2,677.00	26.30	136.00	2,573.71	-378.60	394.11	546.50	1.37	1.16	1.68
2,773.00	25.80	131.70	2,659.96	-407.79	424.49	588.63	2.03	-0.52	-4.48
2,868.00	26.20	132.40	2,745.35	-435.69	455.41	630.26	0.53	0.42	0.74
2,963.00	26.10	133.30	2,830.62	-464.16	486.10	672.12	0.43	-0.11	0.95
3,059.00	26.40	132.90	2,916.72	-493.17	517.11	714.57	0.36	0.31	-0.42
3,154.00	24.30	131.00	3,002.57	-520.38	547.34	755.22	2.37	-2.21	-2.00
3,249.00	22.90	130.90	3,089.62	-545.30	576.06	793.21	1.47	-1.47	-0.11
3,345.00	21.40	131.80	3,178.54	-569.21	603.24	829.37	1.60	-1.56	0.94
3,440.00	21.30	133.60	3,267.02	-592.66	628.65	863.95	0.70	-0.11	1.89
3,536.00	21.50	135.50	3,356.40	-617.23	653.61	898.97	0.75	0.21	1.98
3,631.00	23.40	136.30	3,444.20	-643.29	678.85	935.22	2.03	2.00	0.84
3,726.00	22.60	137.40	3,531.65	-670.36	704.24	972.28	0.96	-0.84	1.16
3,822.00	24.00	135.80	3,619.82	-697.94	730.33	1,010.20	1.60	1.46	-1.67
3,917.00	22.10	135.20	3,707.23	-724.47	756.40	1,047.38	2.02	-2.00	-0.63
4,013.00	21.50	133.80	3,796.36	-749.47	781.82	1,083.02	0.83	-0.63	-1.46
4,108.00	22.90	131.50	3,884.32	-773.76	808.23	1,118.90	1.73	1.47	-2.42
4,203.00	20.90	131.10	3,972.46	-797.15	834.85	1,154.30	2.11	-2.11	-0.42
4,299.00	22.60	130.50	4,061.62	-820.39	861.78	1,189.83	1.79	1.77	-0.63
4,395.00	21.30	129.50	4,150.66	-843.46	889.26	1,225.63	1.41	-1.35	-1.04
4,489.00	19.10	129.70	4,238.87	-864.15	914.27	1,258.01	2.34	-2.34	0.21
4,585.00	17.60	131.60	4,329.99	-883.82	937.21	1,288.18	1.68	-1.56	1.98
4,680.00	15.20	132.20	4,421.12	-901.72	957.18	1,314.98	2.53	-2.53	0.63
4,775.00	13.20	132.50	4,513.21	-917.42	974.40	1,338.28	2.11	-2.11	0.32
4,871.00	10.40	135.00	4,607.17	-930.95	988.61	1,357.90	2.96	-2.92	2.60
4,966.00	8.30	133.90	4,700.91	-941.77	999.62	1,373.34	2.22	-2.21	-1.16
5,062.00	7.80	138.60	4,795.96	-951.46	1,008.92	1,386.76	0.86	-0.52	4.90
5,157.00	4.90	145.40	4,890.37	-959.64	1,015.49	1,397.16	3.15	-3.05	7.16
5,252.00	3.30	144.10	4,985.12	-965.19	1,019.40	1,403.82	1.69	-1.68	-1.37
5,348.00	3.50	135.20	5,080.96	-969.51	1,023.08	1,409.47	0.59	0.21	-9.27
5,443.00	2.20	117.10	5,175.84	-972.40	1,026.75	1,414.11	1.65	-1.37	-19.05
5,538.00	2.00	133.20	5,270.77	-974.37	1,029.58	1,417.52	0.65	-0.21	16.95

<b>Company:</b>	Bill Barrett Corp.	<b>Local Co-ordinate Reference:</b>	Well GGU Miller Fed 34A-32-691
<b>Project:</b>	Garfield County, Colorado	<b>TVD Reference:</b>	KB @ 6142.00ft
<b>Site:</b>	MDP 6 Pad	<b>MD Reference:</b>	KB @ 6142.00ft
<b>Well:</b>	GGU Miller Fed 34A-32-691	<b>North Reference:</b>	True
<b>Wellbore:</b>	Wellbore #1	<b>Survey Calculation Method:</b>	Minimum Curvature
<b>Design:</b>	Wellbore #1	<b>Database:</b>	Compass VM

Survey										
Measured Depth (ft)	Inclination (°)	Azimuth (°)	Vertical Depth (ft)	+N/-S (ft)	+E/-W (ft)	Vertical Section (ft)	Dogleg Rate (°/100ft)	Build Rate (°/100ft)	Turn Rate (°/100ft)	
5,634.00	2.00	85.60	5,366.72	-975.38	1,032.47	1,420.31	1.68	0.00	-49.58	
5,729.00	2.40	33.70	5,461.66	-973.60	1,035.23	1,421.07	2.06	0.42	-54.63	
5,824.00	1.00	53.20	5,556.62	-971.45	1,037.00	1,420.86	1.57	-1.47	20.53	
5,920.00	1.00	336.30	5,652.61	-970.18	1,037.33	1,420.22	1.30	0.00	-80.10	
6,015.00	0.90	314.10	5,747.59	-968.90	1,036.46	1,418.71	0.40	-0.11	-23.37	
6,110.00	1.00	248.70	5,842.58	-968.69	1,035.15	1,417.62	1.08	0.11	-68.84	
6,205.00	1.30	246.20	5,937.56	-969.42	1,033.39	1,416.85	0.32	0.32	-2.63	
6,301.00	2.00	226.40	6,033.52	-971.02	1,031.18	1,416.36	0.93	0.73	-20.63	
6,396.00	3.00	223.60	6,128.43	-973.96	1,028.27	1,416.29	1.06	1.05	-2.95	
6,491.00	1.80	231.20	6,223.35	-976.70	1,025.39	1,416.10	1.30	-1.26	8.00	
6,587.00	2.30	173.70	6,319.30	-979.55	1,024.43	1,417.39	2.10	0.52	-59.90	
6,682.00	2.20	176.10	6,414.22	-983.27	1,024.76	1,420.19	0.14	-0.11	2.53	
6,777.00	1.50	157.30	6,509.17	-986.24	1,025.37	1,422.68	0.97	-0.74	-19.79	
6,873.00	2.50	167.10	6,605.11	-989.44	1,026.32	1,425.58	1.10	1.04	10.21	
6,968.00	1.10	190.60	6,700.07	-992.35	1,026.61	1,427.81	1.64	-1.47	24.74	
7,064.00	1.00	214.30	6,796.05	-993.95	1,025.97	1,428.45	0.46	-0.10	24.69	
7,159.00	1.50	57.50	6,891.04	-993.97	1,026.55	1,428.89	2.58	0.53	-165.05	
7,254.00	0.80	80.50	6,986.02	-993.19	1,028.26	1,429.58	0.87	-0.74	24.21	
7,343.00	0.40	142.00	7,075.02	-993.33	1,029.06	1,430.26	0.79	-0.45	69.10	
7,390.00	0.40	142.00	7,122.02	-993.59	1,029.26	1,430.58	0.00	0.00	0.00	

Casing Points					
Measured Depth (ft)	Vertical Depth (ft)	Name	Casing Diameter (ft)	Hole Diameter (ft)	
771.00	770.98	9 5/8"	0.80	1.02	

Survey Annotations					
Measured Depth (ft)	Vertical Depth (ft)	Local Coordinates		Comment	
		+N/-S (ft)	+E/-W (ft)		
4,013.00	3,796.36	-749.47	781.82	As of Nov 08	
6,015.00	5,747.59	-968.90	1,036.46	As of Nov 09	
7,390.00	7,122.02	-993.59	1,029.26	Proj to TD @ 7390' MD	

Checked By: \_\_\_\_\_ Approved By: \_\_\_\_\_ Date: \_\_\_\_\_