

Bonanza Creek Energy, Inc.

Weld County, CO

Sec. 17-T5N-R61W

Pronghorn 31-17HZ

Plan A - Rev 0

Plan: Plan A - Rev 0 Proposal

Sperry Drilling Services

Proposal Report

16 March, 2011

Well Coordinates: 1,393,760.82 N, 3,353,231.73 E (40° 24' 26.42" N, 104° 13' 53.51" W)

Ground Level: 4,615.00 ft

Local Coordinate Origin:

Centered on Well Pronghorn 31-17HZ

Viewing Datum:

GL @ 4615.00ft (Ground Level)

TVDs to System:

N

North Reference:

Grid

Unit System:

API - US Survey Feet - Custom

Geodetic Scale Factor Applied

Version: 2003.16 Build: 43I

HALLIBURTON

Plan Report for Pronghorn 31-17HZ - Plan A - Rev 0 Proposal

Measured Depth (ft)	Inclination (°)	Azimuth (°)	Vertical Depth (ft)	+N/-S (ft)	+E/-W (ft)	Vertical Section (ft)	Dogleg Rate (°/100ft)	Build Rate (°/100ft)	Turn Rate (°/100ft)	Toolface Azimuth (°)
0.00	0.00	0.00	0.00	0.00	0.00	0.00	0.00	0.00	0.00	0.00
100.00	0.00	0.00	100.00	0.00	0.00	0.00	0.00	0.00	0.00	0.00
200.00	0.00	0.00	200.00	0.00	0.00	0.00	0.00	0.00	0.00	0.00
300.00	0.00	0.00	300.00	0.00	0.00	0.00	0.00	0.00	0.00	0.00
400.00	0.00	0.00	400.00	0.00	0.00	0.00	0.00	0.00	0.00	0.00
500.00	0.00	0.00	500.00	0.00	0.00	0.00	0.00	0.00	0.00	0.00
600.00	0.00	0.00	600.00	0.00	0.00	0.00	0.00	0.00	0.00	0.00
700.00	0.00	0.00	700.00	0.00	0.00	0.00	0.00	0.00	0.00	0.00
800.00	0.00	0.00	800.00	0.00	0.00	0.00	0.00	0.00	0.00	0.00
900.00	0.00	0.00	900.00	0.00	0.00	0.00	0.00	0.00	0.00	0.00
1,000.00	0.00	0.00	1,000.00	0.00	0.00	0.00	0.00	0.00	0.00	0.00
1,100.00	0.00	0.00	1,100.00	0.00	0.00	0.00	0.00	0.00	0.00	0.00
1,200.00	0.00	0.00	1,200.00	0.00	0.00	0.00	0.00	0.00	0.00	0.00
1,300.00	0.00	0.00	1,300.00	0.00	0.00	0.00	0.00	0.00	0.00	0.00
1,400.00	0.00	0.00	1,400.00	0.00	0.00	0.00	0.00	0.00	0.00	0.00
1,500.00	0.00	0.00	1,500.00	0.00	0.00	0.00	0.00	0.00	0.00	0.00
1,600.00	0.00	0.00	1,600.00	0.00	0.00	0.00	0.00	0.00	0.00	0.00
1,700.00	0.00	0.00	1,700.00	0.00	0.00	0.00	0.00	0.00	0.00	0.00
1,800.00	0.00	0.00	1,800.00	0.00	0.00	0.00	0.00	0.00	0.00	0.00
1,900.00	0.00	0.00	1,900.00	0.00	0.00	0.00	0.00	0.00	0.00	0.00
2,000.00	0.00	0.00	2,000.00	0.00	0.00	0.00	0.00	0.00	0.00	0.00
2,100.00	0.00	0.00	2,100.00	0.00	0.00	0.00	0.00	0.00	0.00	0.00
2,200.00	0.00	0.00	2,200.00	0.00	0.00	0.00	0.00	0.00	0.00	0.00
2,300.00	0.00	0.00	2,300.00	0.00	0.00	0.00	0.00	0.00	0.00	0.00
2,400.00	0.00	0.00	2,400.00	0.00	0.00	0.00	0.00	0.00	0.00	0.00
2,500.00	0.00	0.00	2,500.00	0.00	0.00	0.00	0.00	0.00	0.00	0.00
2,600.00	0.00	0.00	2,600.00	0.00	0.00	0.00	0.00	0.00	0.00	0.00
2,700.00	0.00	0.00	2,700.00	0.00	0.00	0.00	0.00	0.00	0.00	0.00
2,800.00	0.00	0.00	2,800.00	0.00	0.00	0.00	0.00	0.00	0.00	0.00
2,900.00	0.00	0.00	2,900.00	0.00	0.00	0.00	0.00	0.00	0.00	0.00
3,000.00	0.00	0.00	3,000.00	0.00	0.00	0.00	0.00	0.00	0.00	0.00
3,100.00	0.00	0.00	3,100.00	0.00	0.00	0.00	0.00	0.00	0.00	0.00
3,200.00	0.00	0.00	3,200.00	0.00	0.00	0.00	0.00	0.00	0.00	0.00
3,300.00	0.00	0.00	3,300.00	0.00	0.00	0.00	0.00	0.00	0.00	0.00
3,400.00	0.00	0.00	3,400.00	0.00	0.00	0.00	0.00	0.00	0.00	0.00
3,500.00	0.00	0.00	3,500.00	0.00	0.00	0.00	0.00	0.00	0.00	0.00
3,600.00	0.00	0.00	3,600.00	0.00	0.00	0.00	0.00	0.00	0.00	0.00
3,700.00	0.00	0.00	3,700.00	0.00	0.00	0.00	0.00	0.00	0.00	0.00
3,800.00	0.00	0.00	3,800.00	0.00	0.00	0.00	0.00	0.00	0.00	0.00
3,900.00	0.00	0.00	3,900.00	0.00	0.00	0.00	0.00	0.00	0.00	0.00
4,000.00	0.00	0.00	4,000.00	0.00	0.00	0.00	0.00	0.00	0.00	0.00
4,100.00	0.00	0.00	4,100.00	0.00	0.00	0.00	0.00	0.00	0.00	0.00
4,200.00	0.00	0.00	4,200.00	0.00	0.00	0.00	0.00	0.00	0.00	0.00
4,300.00	0.00	0.00	4,300.00	0.00	0.00	0.00	0.00	0.00	0.00	0.00
4,400.00	0.00	0.00	4,400.00	0.00	0.00	0.00	0.00	0.00	0.00	0.00
4,500.00	0.00	0.00	4,500.00	0.00	0.00	0.00	0.00	0.00	0.00	0.00
4,600.00	0.00	0.00	4,600.00	0.00	0.00	0.00	0.00	0.00	0.00	0.00
4,700.00	0.00	0.00	4,700.00	0.00	0.00	0.00	0.00	0.00	0.00	0.00
4,800.00	0.00	0.00	4,800.00	0.00	0.00	0.00	0.00	0.00	0.00	0.00
4,900.00	0.00	0.00	4,900.00	0.00	0.00	0.00	0.00	0.00	0.00	0.00
5,000.00	0.00	0.00	5,000.00	0.00	0.00	0.00	0.00	0.00	0.00	0.00
5,100.00	0.00	0.00	5,100.00	0.00	0.00	0.00	0.00	0.00	0.00	0.00
5,200.00	0.00	0.00	5,200.00	0.00	0.00	0.00	0.00	0.00	0.00	0.00
5,291.44	0.00	0.00	5,291.44	0.00	0.00	0.00	0.00	0.00	0.00	0.00
KOP - Begin 7.17°/100ft Build at 5291.44ft										
5,300.00	0.61	177.32	5,300.00	-0.05	0.00	0.05	7.17	7.17	0.00	177.32
5,400.00	7.78	177.32	5,399.67	-7.35	0.34	7.36	7.17	7.17	0.00	0.00
5,500.00	14.95	177.32	5,497.64	-27.02	1.27	27.05	7.17	7.17	0.00	0.00

Plan Report for Pronghorn 31-17HZ - Plan A - Rev 0 Proposal

Measured Depth (ft)	Inclination (°)	Azimuth (°)	Vertical Depth (ft)	+N/-S (ft)	+E/-W (ft)	Vertical Section (ft)	Dogleg Rate (°/100ft)	Build Rate (°/100ft)	Turn Rate (°/100ft)	Toolface Azimuth (°)
5,600.00	22.11	177.32	5,592.40	-58.74	2.75	58.80	7.17	7.17	0.00	0.00
5,700.00	29.28	177.32	5,682.45	-102.02	4.78	102.13	7.17	7.17	0.00	0.00
5,800.00	36.44	177.32	5,766.40	-156.18	7.32	156.35	7.17	7.17	0.00	0.00
5,900.00	43.61	177.32	5,842.92	-220.38	10.33	220.62	7.17	7.17	0.00	0.00
6,000.00	50.77	177.32	5,910.84	-293.62	13.76	293.94	7.17	7.17	0.00	0.00
6,100.00	57.94	177.32	5,969.07	-374.74	17.56	375.15	7.17	7.17	0.00	0.00
6,200.00	65.11	177.32	6,016.72	-462.49	21.68	462.99	7.17	7.17	0.00	0.00
6,300.00	72.27	177.32	6,053.04	-555.49	26.04	556.10	7.17	7.17	0.00	0.00
6,400.00	79.44	177.32	6,077.47	-652.28	30.57	653.00	7.17	7.17	0.00	0.00
6,500.00	86.60	177.32	6,089.61	-751.37	35.22	752.19	7.17	7.17	0.00	0.00
6,552.66	90.38	177.32	6,091.00	-803.94	37.68	804.83	7.17	7.17	0.00	0.00
End of Build at 6552.66ft - 7" Csg										
6,600.00	90.38	177.32	6,090.69	-851.23	39.90	852.17	0.00	0.00	0.00	0.00
6,700.00	90.38	177.32	6,090.03	-951.12	44.58	952.16	0.00	0.00	0.00	0.00
6,800.00	90.38	177.32	6,089.38	-1,051.01	49.26	1,052.16	0.00	0.00	0.00	0.00
6,900.00	90.38	177.32	6,088.72	-1,150.90	53.95	1,152.16	0.00	0.00	0.00	0.00
7,000.00	90.38	177.32	6,088.07	-1,250.78	58.63	1,252.16	0.00	0.00	0.00	0.00
7,100.00	90.38	177.32	6,087.41	-1,350.67	63.31	1,352.15	0.00	0.00	0.00	0.00
7,200.00	90.38	177.32	6,086.75	-1,450.56	67.99	1,452.15	0.00	0.00	0.00	0.00
7,300.00	90.38	177.32	6,086.10	-1,550.45	72.67	1,552.15	0.00	0.00	0.00	0.00
7,400.00	90.38	177.32	6,085.44	-1,650.34	77.36	1,652.15	0.00	0.00	0.00	0.00
7,500.00	90.38	177.32	6,084.79	-1,750.22	82.04	1,752.15	0.00	0.00	0.00	0.00
7,600.00	90.38	177.32	6,084.13	-1,850.11	86.72	1,852.14	0.00	0.00	0.00	0.00
7,700.00	90.38	177.32	6,083.47	-1,950.00	91.40	1,952.14	0.00	0.00	0.00	0.00
7,800.00	90.38	177.32	6,082.82	-2,049.89	96.08	2,052.14	0.00	0.00	0.00	0.00
7,900.00	90.38	177.32	6,082.16	-2,149.78	100.76	2,152.14	0.00	0.00	0.00	0.00
8,000.00	90.38	177.32	6,081.51	-2,249.67	105.45	2,252.14	0.00	0.00	0.00	0.00
8,100.00	90.38	177.32	6,080.85	-2,349.55	110.13	2,352.13	0.00	0.00	0.00	0.00
8,200.00	90.38	177.32	6,080.19	-2,449.44	114.81	2,452.13	0.00	0.00	0.00	0.00
8,300.00	90.38	177.32	6,079.54	-2,549.33	119.49	2,552.13	0.00	0.00	0.00	0.00
Hold Angle at 90.38°										
8,400.00	90.38	177.32	6,078.88	-2,649.22	124.17	2,652.13	0.00	0.00	0.00	0.00
8,500.00	90.38	177.32	6,078.23	-2,749.11	128.86	2,752.12	0.00	0.00	0.00	0.00
8,600.00	90.38	177.32	6,077.57	-2,848.99	133.54	2,852.12	0.00	0.00	0.00	0.00
8,700.00	90.38	177.32	6,076.92	-2,948.88	138.22	2,952.12	0.00	0.00	0.00	0.00
8,800.00	90.38	177.32	6,076.26	-3,048.77	142.90	3,052.12	0.00	0.00	0.00	0.00
8,900.00	90.38	177.32	6,075.60	-3,148.66	147.58	3,152.12	0.00	0.00	0.00	0.00
9,000.00	90.38	177.32	6,074.95	-3,248.55	152.27	3,252.11	0.00	0.00	0.00	0.00
9,100.00	90.38	177.32	6,074.29	-3,348.44	156.95	3,352.11	0.00	0.00	0.00	0.00
9,200.00	90.38	177.32	6,073.64	-3,448.32	161.63	3,452.11	0.00	0.00	0.00	0.00
9,300.00	90.38	177.32	6,072.98	-3,548.21	166.31	3,552.11	0.00	0.00	0.00	0.00
9,400.00	90.38	177.32	6,072.32	-3,648.10	170.99	3,652.10	0.00	0.00	0.00	0.00
9,500.00	90.38	177.32	6,071.67	-3,747.99	175.68	3,752.10	0.00	0.00	0.00	0.00
9,600.00	90.38	177.32	6,071.01	-3,847.88	180.36	3,852.10	0.00	0.00	0.00	0.00
9,700.00	90.38	177.32	6,070.36	-3,947.76	185.04	3,952.10	0.00	0.00	0.00	0.00
9,800.00	90.38	177.32	6,069.70	-4,047.65	189.72	4,052.10	0.00	0.00	0.00	0.00
9,900.00	90.38	177.32	6,069.04	-4,147.54	194.40	4,152.09	0.00	0.00	0.00	0.00
10,000.00	90.38	177.32	6,068.39	-4,247.43	199.09	4,252.09	0.00	0.00	0.00	0.00
10,100.00	90.38	177.32	6,067.73	-4,347.32	203.77	4,352.09	0.00	0.00	0.00	0.00
10,200.00	90.38	177.32	6,067.08	-4,447.21	208.45	4,452.09	0.00	0.00	0.00	0.00
10,209.43	90.38	177.32	6,067.01	-4,456.62	208.89	4,461.52	0.00	0.00	0.00	0.00
Total Depth at 10209.43ft										

Plan Report for Pronghorn 31-17HZ - Plan A - Rev 0 Proposal**Plan Annotations**

Measured Depth (ft)	Vertical Depth (ft)	Local Coordinates		Comment
		+N/-S (ft)	+E/-W (ft)	
5,291.44	5,291.44	0.00	0.00	KOP - Begin 7.17°/100ft Build at 5291.44ft
6,552.66	6,091.00	-803.94	37.68	End of Build at 6552.66ft
8,300.00	6,079.54	-2,549.33	119.49	Hold Angle at 90.38°
10,209.43	6,067.01	-4,456.62	208.89	Total Depth at 10209.43ft

Vertical Section Information

Angle Type	Target	Azimuth (°)	Origin Type	Origin +N/-S (ft)	Origin +E/-W (ft)	Start TVD (ft)
TD	No Target (Freehand)	177.32	Slot	0.00	0.00	0.00

Survey tool program

From (ft)	To (ft)	Survey/Plan	Survey Tool
0.00	10,209.43	Plan A - Rev 0 Proposal	MWD

Casing Details

Measured Depth (ft)	Vertical Depth (ft)	Name	Casing Diameter (")	Hole Diameter (")
6,552.66	6,091.00	7" Csg	7	8-3/4

Targets associated with this wellbore

Target Name	TVD (ft)	+N/-S (ft)	+E/-W (ft)	Shape
Pronghorn 31-17HZ_PlanA - Rev0_Section Lines	0.00	0.00	0.00	Polygon
Pronghorn 31-17HZ_PlanA - Rev0_BHL Tgt	6,067.00	-4,456.64	208.61	Point
Pronghorn 31-17HZ_PlanA - Rev0_Csg Pt	6,091.00	-803.94	37.68	Point

North Reference Sheet for Sec. 17-T5N-R61W - Pronghorn 31-17HZ - Plan A - Rev 0

All data is in US Feet unless otherwise stated. Directions and Coordinates are relative to Grid North Reference.

Vertical Depths are relative to GL @ 4615.00ft (Ground Level). Northing and Easting are relative to Pronghorn 31-17HZ

Coordinate System is US State Plane 1983, Colorado Northern Zone using datum North American Datum 1983, ellipsoid GRS 1980

Projection method is Lambert Conformal Conic (2 parallel)

Central Meridian is -105.50°, Longitude Origin:0° 0' 0.000 E°, Latitude Origin:40° 47' 0.000 N°

False Easting: 3,000,000.00ft, False Northing: 1,000,000.00ft, Scale Reduction: 0.99996057

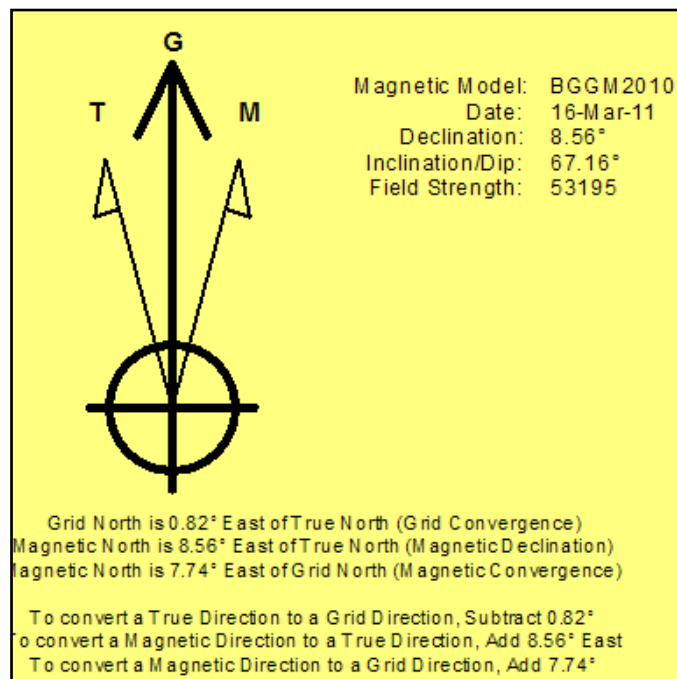
Grid Coordinates of Well: 1,393,760.82 ft N, 3,353,231.73 ft E

Geographical Coordinates of Well: 40° 24' 26.42" N, 104° 13' 53.51" W

Grid Convergence at Surface is: 0.82°

Based upon Minimum Curvature type calculations, at a Measured Depth of 10,209.43ft
the Bottom Hole Displacement is 4,461.52ft in the Direction of 177.32° (Grid).

Magnetic Convergence at surface is: -7.74° (16 March 2011, , BGGM2010)



Project: Weld County, CO
Site: Sec. 17-T5N-R61W
Well: Pronghorn 31-17HZ
Wellbore: Plan A - Rev 0
Design: Plan A - Rev 0 Proposal

Bonanza Creek Energy, Inc.

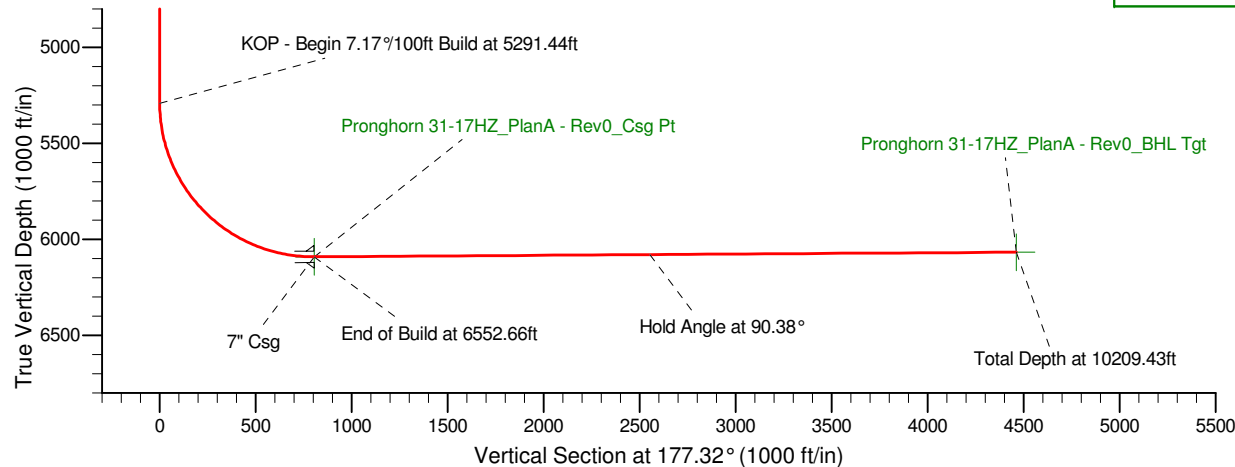
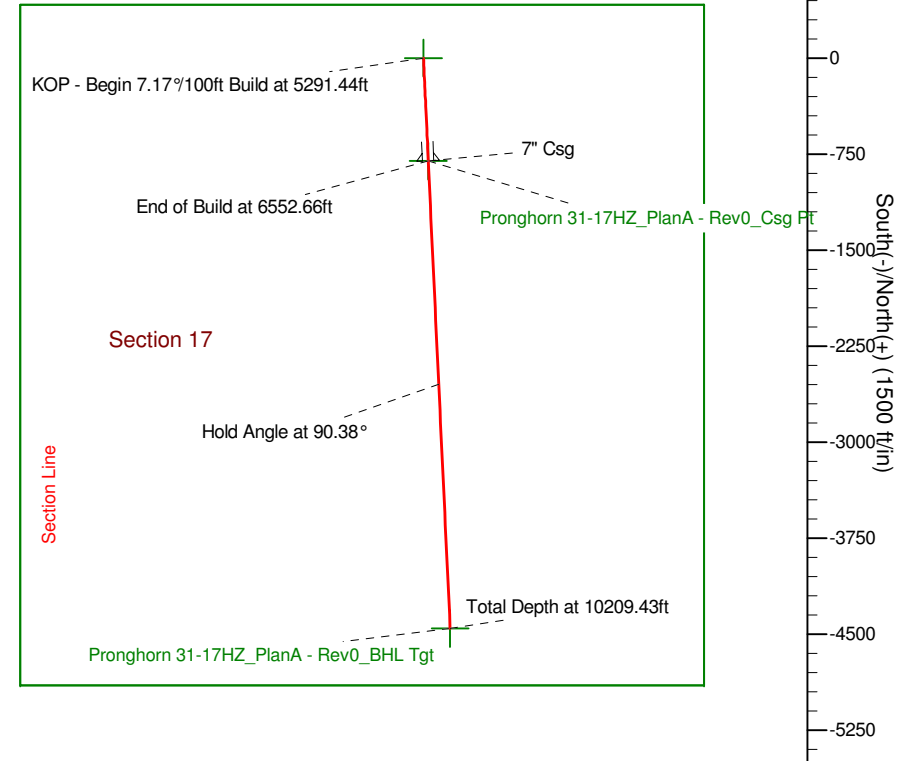
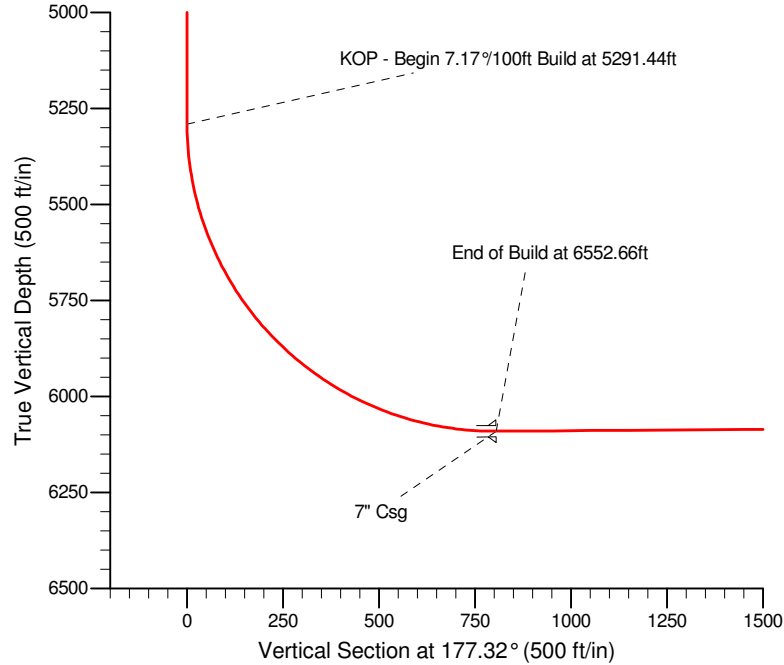
HALLIBURTON
Sperry Drilling

SECTION DETAILS

Sec	MD	Inc	Azi	TVD	+N/-S	+E/-W	DLeg	TFace	VSec	Target
1	0.00	0.00	0.00	0.00	0.00	0.00	0.00	0.00	0.00	
2	5291.44	0.00	0.00	5291.44	0.00	0.00	0.00	0.00	0.00	
3	6552.66	90.38	177.32	6091.00	-803.94	37.68	7.17	177.32	804.83	Pronghorn 31-17HZ_PlanA - Rev0_Csg Pt
4	10209.43	90.38	177.32	6067.01	-4456.63	208.89	0.00	0.00	4461.52	Pronghorn 31-17HZ_PlanA - Rev0_BHL Tgt

West(-)/East(+) (1500 ft/in)

-3750 -3000 -2250 -1500 -750 0 750 1500 2250



WELL DETAILS: Pronghorn 31-17HZ

Ground Level:	4615.00		
Northing	Easting	Latitude	Longitude
1393760.82	3353231.73	40° 24' 26.424 N	104° 13' 53.508 W

Plan: Plan A - Rev 0 Proposal (Pronghorn 31-17HZ/Plan A - Rev 0)

Created By: Jay Lantz Date: 11:32, March 16 2011

Checked: _____ Date: _____

Reviewed: _____ Date: _____

Approved: _____ Date: _____