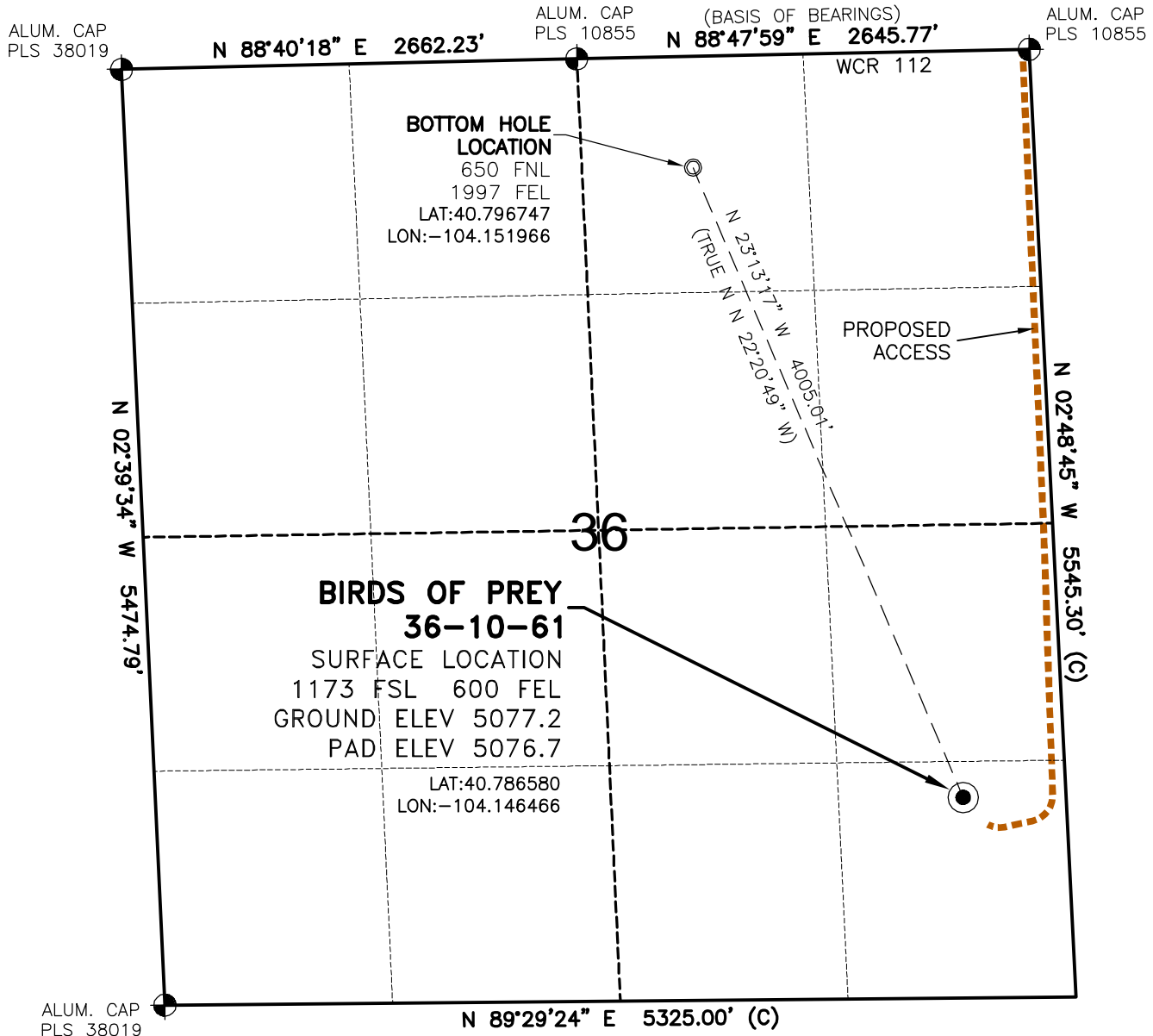


# WELL LOCATION MAP

**BIRDS OF PREY  
36-10-61 PAD**



## SURVEYOR'S STATEMENT

The undersigned hereby states that the well location shown hereon was staked on the ground based on existing monumentation and/or physical evidence found in the field and is correct to the best of my knowledge, information and belief.

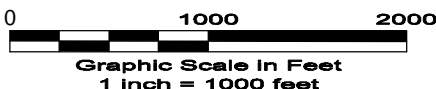


## NOTES

- 1.) Horizontal coordinates based on NGS control point "PORTER" and vertical datum based on NGS control point "A 310" with an elevation of 5253.35. NAVD 1988.
- 2.) All directions, distances, and dimensions shown hereon are based on coordinates from the "Colorado coordinate system of 1983 north zone" (article 52 of title 38, C.R.S.).
- 3.) All section line dimensions shown hereon are based on field measurements of existing monuments and/or physical evidence found in the field unless otherwise indicated. Refer to land survey plats deposited in Weld County.
- 4.) Physical features shown hereon are for graphical representation only.
- 5.) See Form 2A for visible improvements within 400' of wellhead.
- 6.) Distances to nearest section lines are measured perpendicularly.
- 7.) This is not a land survey nor land survey plat.
- 8.) Date of Survey 8/12/10; Date of Drawing 10/4/10. REV 0

PDOP Reading: 2.3 Instrument Operator: GNA

10/5/10



**GEO SURV**

LAND SURVEYING AND MAPPING  
LAFAYETTE - WINTER PARK  
Ph 303 666 0379 Fx 303 665 6320

**SLAWSON EXPLORATION CO., INC.**  
**BIRDS OF PREY 36-10-61**

SL SE1/4 SE1/4 SEC. 36 T10N R61W  
BL NW1/4 NE1/4 SEC. 36 T10N R61W  
6th PM WELD COUNTY COLORADO