

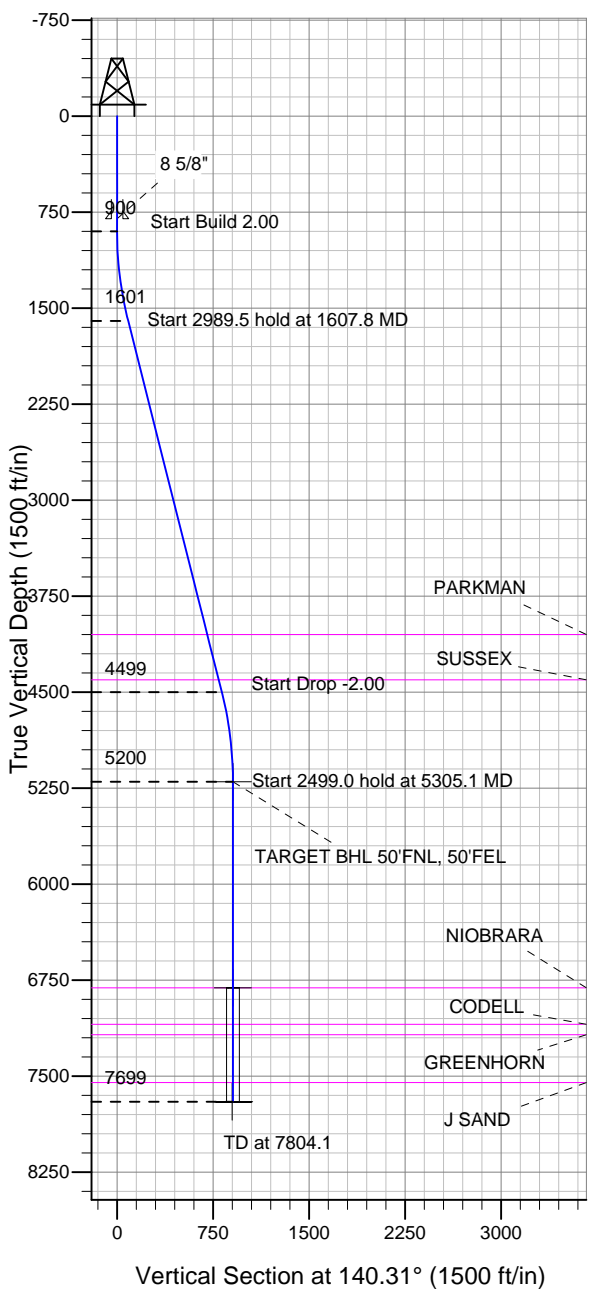
ENSIGN

Directional

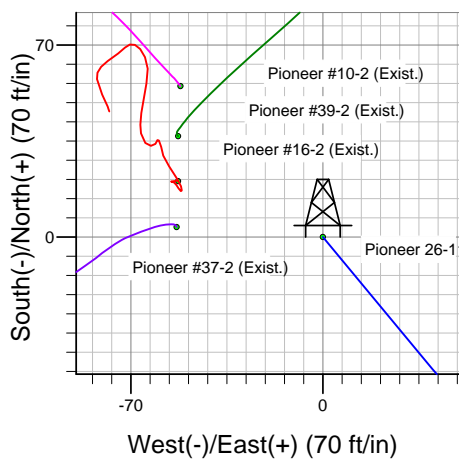
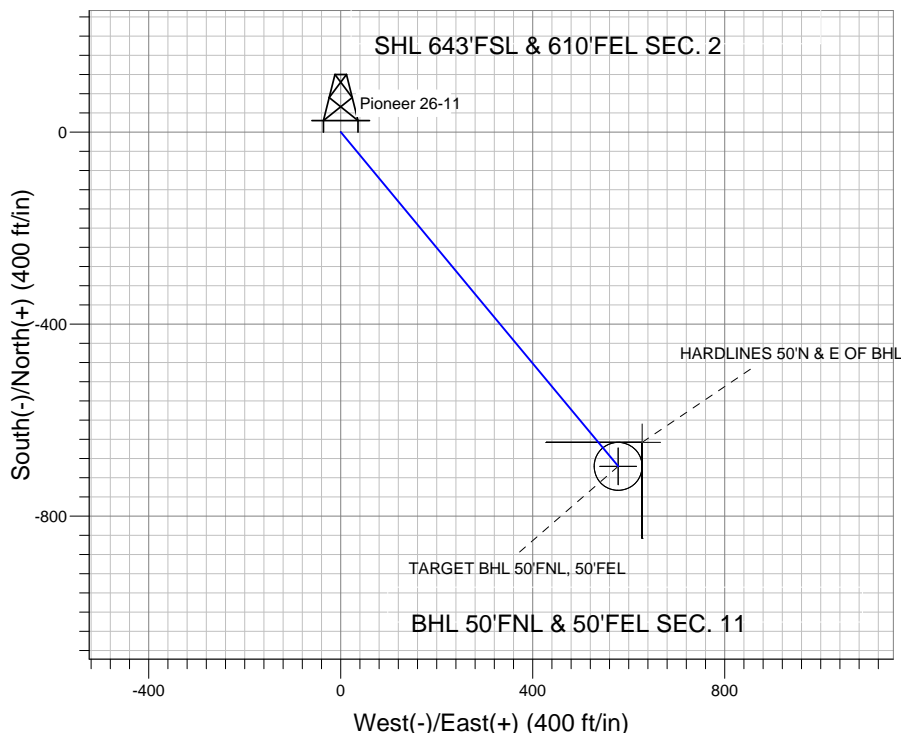
Well Name: Pioneer 26-11

Surface Location: Pioneer 26-11 Pad Sec.2-T2N-R65W
 North American Datum 1983 , US State Plane 1983 , Colorado Northern Zone
 Ground Elevation: 4849.0

+N/-S +E/-W Northing Easting Latitude Longitude Slot
 0.0 0.0 1303135.15 3244955.78 40° 9' 43.841 N 104° 37' 24.740 W
 Original Well Elev WELL @ 4863.0ft (Original Well Elev)



Anadarko, Weld County CO



FORMATION TOP DETAILS

TVDPath	MDPath	Formation
4049.0	4132.9	PARKMAN
4404.0	4499.0	SUSSEX
6809.0	6914.1	NIOBRARA
7094.0	7199.1	CODELL
7175.0	7280.1	GREENHORN
7549.0	7654.1	J SAND



Azimuths to True North
 Magnetic North: 8.81°

Magnetic Field
 Strength: 53054.4nT
 Dip Angle: 66.89°
 Date: 2/21/2011
 Model: IGRF2010

Well Name: Pioneer 26-11 Lat/Long: 40° 9' 43.841 N 104° 37' 24.740 W

WELLBORE TARGET DETAILS (LAT/LONG)

Name	TVD	+N/-S	+E/-W	Latitude	Longitude	Shape
TARGET BHL 50'FNL, 50'FEL	5200.0	-696.5	578.0	40° 9' 36.958 N	104° 37' 17.296 W	Point
TARGET CIRCLE 50'FNL, 50'FEL	6809.0	-696.5	578.0	40° 9' 36.958 N	104° 37' 17.296 W	Circle (Radius: 50.0)
HARDLINES 50'N & E OF BHL	7699.0	-646.5	628.0	40° 9' 37.452 N	104° 37' 16.652 W	Polygon

SECTION DETAILS

Sec	MD	Inc	Azi	TVD	+N/-S	+E/-W	DLeg	TFace	VSec	Target
1	0.0	0.00	0.00	0.0	0.0	0.0	0.00	0.00	0.0	
2	900.0	0.00	0.00	900.0	0.0	0.0	0.00	0.00	0.0	
3	1607.8	14.16	140.31	1600.6	-66.9	55.6	2.00	140.31	87.0	
4	4597.3	14.16	140.31	4499.4	-629.6	522.5	0.00	0.00	818.1	
5	5305.1	0.00	0.00	5200.0	-696.5	578.0	2.00	180.00	905.1	TARGET BHL 50'FNL, 50'FEL
6	7804.1	0.00	0.00	7699.0	-696.5	578.0	0.00	0.00	905.1	

CASING DETAILS

TVD	MD	Name	Size
800.0	800.0	8 5/8"	8-5/8

Pioneer 26-11 Pad Sec.2-T2N-R65W
 Pioneer 26-11
 Plan #1 (3-1-11)
 16:54, March 03 2011



Anadarko, Weld County CO

SEC.2-T2N-R65W

Pioneer 26-11 Pad Sec.2-T2N-R65W

Pioneer 26-11

Wellbore #1

Plan: Plan #1 (3-1-11)

Standard Planning Report

03 March, 2011



Database:	Landmark	Local Co-ordinate Reference:	Well Pioneer 26-11
Company:	Anadarko, Weld County CO	TVD Reference:	WELL @ 4863.0ft (Original Well Elev)
Project:	SEC.2-T2N-R65W	MD Reference:	WELL @ 4863.0ft (Original Well Elev)
Site:	Pioneer 26-11 Pad Sec.2-T2N-R65W	North Reference:	True
Well:	Pioneer 26-11	Survey Calculation Method:	Minimum Curvature
Wellbore:	Wellbore #1		
Design:	Plan #1 (3-1-11)		

Project	SEC.2-T2N-R65W, Weld County, Colorado		
Map System:	US State Plane 1983	System Datum:	Mean Sea Level
Geo Datum:	North American Datum 1983		Using Well Reference Point
Map Zone:	Colorado Northern Zone		Using geodetic scale factor

Site						Pioneer 26-11 Pad Sec.2-T2N-R65W							
Site Position: From: Position Uncertainty:			Lat/Long 0.0 ft			Northing:		1,303,135.16 ft		Latitude:		40° 9' 43.841 N	
						Easting:		3,244,955.78 ft		Longitude:		104° 37' 24.740 W	
						Slot Radius:		"		Grid Convergence:		0.57 °	

Well	Pioneer 26-11					
Well Position	+N/-S	0.0 ft	Northing:	1,303,135.15 ft	Latitude:	40° 9' 43.841 N
	+E/-W	0.0 ft	Easting:	3,244,955.78 ft	Longitude:	104° 37' 24.740 W
Position Uncertainty		0.0 ft	Wellhead Elevation:	ft	Ground Level:	4,849.0 ft

Wellbore	Wellbore #1				
Magnetics	Model Name	Sample Date	Declination (°)	Dip Angle (°)	Field Strength (nT)
	IGRF2010	2/21/2011	8.81	66.89	53,054

Design	Plan #1 (3-1-11)			
Audit Notes:				
Version:	Phase:	PROTOTYPE	Tie On Depth:	0.0
Vertical Section:	Depth From (TVD) (ft)	+N/-S (ft)	+E/-W (ft)	Direction (°)
	0.0	0.0	0.0	140.31

Plan Sections										
Measured Depth (ft)	Inclination (°)	Azimuth (°)	Vertical Depth (ft)	+N/-S (ft)	+E/-W (ft)	Dogleg Rate (°/100ft)	Build Rate (°/100ft)	Turn Rate (°/100ft)	TFO (°)	Target
0.0	0.00	0.00	0.0	0.0	0.0	0.00	0.00	0.00	0.00	
900.0	0.00	0.00	900.0	0.0	0.0	0.00	0.00	0.00	0.00	
1,607.8	14.16	140.31	1,600.6	-66.9	55.6	2.00	2.00	0.00	140.31	
4,597.3	14.16	140.31	4,499.4	-629.6	522.5	0.00	0.00	0.00	0.00	
5,305.1	0.00	0.00	5,200.0	-696.5	578.0	2.00	-2.00	0.00	180.00	TARGET BHL 50'FI
7,804.1	0.00	0.00	7,699.0	-696.5	578.0	0.00	0.00	0.00	0.00	

Database:	Landmark	Local Co-ordinate Reference:	Well Pioneer 26-11
Company:	Anadarko, Weld County CO	TVD Reference:	WELL @ 4863.0ft (Original Well Elev)
Project:	SEC.2-T2N-R65W	MD Reference:	WELL @ 4863.0ft (Original Well Elev)
Site:	Pioneer 26-11 Pad Sec.2-T2N-R65W	North Reference:	True
Well:	Pioneer 26-11	Survey Calculation Method:	Minimum Curvature
Wellbore:	Wellbore #1		
Design:	Plan #1 (3-1-11)		

Planned Survey									
Measured Depth (ft)	Inclination (°)	Azimuth (°)	Vertical Depth (ft)	+N/-S (ft)	+E/-W (ft)	Vertical Section (ft)	Dogleg Rate (°/100ft)	Build Rate (°/100ft)	Turn Rate (°/100ft)
0.0	0.00	0.00	0.0	0.0	0.0	0.0	0.00	0.00	0.00
40.0	0.00	0.00	40.0	0.0	0.0	0.0	0.00	0.00	0.00
80.0	0.00	0.00	80.0	0.0	0.0	0.0	0.00	0.00	0.00
120.0	0.00	0.00	120.0	0.0	0.0	0.0	0.00	0.00	0.00
160.0	0.00	0.00	160.0	0.0	0.0	0.0	0.00	0.00	0.00
200.0	0.00	0.00	200.0	0.0	0.0	0.0	0.00	0.00	0.00
240.0	0.00	0.00	240.0	0.0	0.0	0.0	0.00	0.00	0.00
280.0	0.00	0.00	280.0	0.0	0.0	0.0	0.00	0.00	0.00
320.0	0.00	0.00	320.0	0.0	0.0	0.0	0.00	0.00	0.00
360.0	0.00	0.00	360.0	0.0	0.0	0.0	0.00	0.00	0.00
400.0	0.00	0.00	400.0	0.0	0.0	0.0	0.00	0.00	0.00
440.0	0.00	0.00	440.0	0.0	0.0	0.0	0.00	0.00	0.00
480.0	0.00	0.00	480.0	0.0	0.0	0.0	0.00	0.00	0.00
520.0	0.00	0.00	520.0	0.0	0.0	0.0	0.00	0.00	0.00
560.0	0.00	0.00	560.0	0.0	0.0	0.0	0.00	0.00	0.00
600.0	0.00	0.00	600.0	0.0	0.0	0.0	0.00	0.00	0.00
640.0	0.00	0.00	640.0	0.0	0.0	0.0	0.00	0.00	0.00
680.0	0.00	0.00	680.0	0.0	0.0	0.0	0.00	0.00	0.00
720.0	0.00	0.00	720.0	0.0	0.0	0.0	0.00	0.00	0.00
760.0	0.00	0.00	760.0	0.0	0.0	0.0	0.00	0.00	0.00
800.0	0.00	0.00	800.0	0.0	0.0	0.0	0.00	0.00	0.00
8 5/8"									
840.0	0.00	0.00	840.0	0.0	0.0	0.0	0.00	0.00	0.00
880.0	0.00	0.00	880.0	0.0	0.0	0.0	0.00	0.00	0.00
900.0	0.00	0.00	900.0	0.0	0.0	0.0	0.00	0.00	0.00
920.0	0.40	140.31	920.0	-0.1	0.0	0.1	2.00	2.00	0.00
960.0	1.20	140.31	960.0	-0.5	0.4	0.6	2.00	2.00	0.00
1,000.0	2.00	140.31	1,000.0	-1.3	1.1	1.7	2.00	2.00	0.00
1,040.0	2.80	140.31	1,039.9	-2.6	2.2	3.4	2.00	2.00	0.00
1,080.0	3.60	140.31	1,079.9	-4.4	3.6	5.7	2.00	2.00	0.00
1,120.0	4.40	140.31	1,119.8	-6.5	5.4	8.4	2.00	2.00	0.00
1,160.0	5.20	140.31	1,159.6	-9.1	7.5	11.8	2.00	2.00	0.00
1,200.0	6.00	140.31	1,199.5	-12.1	10.0	15.7	2.00	2.00	0.00
1,240.0	6.80	140.31	1,239.2	-15.5	12.9	20.2	2.00	2.00	0.00
1,280.0	7.60	140.31	1,278.9	-19.4	16.1	25.2	2.00	2.00	0.00
1,320.0	8.40	140.31	1,318.5	-23.6	19.6	30.7	2.00	2.00	0.00
1,360.0	9.20	140.31	1,358.0	-28.4	23.5	36.9	2.00	2.00	0.00
1,400.0	10.00	140.31	1,397.5	-33.5	27.8	43.5	2.00	2.00	0.00
1,440.0	10.80	140.31	1,436.8	-39.0	32.4	50.7	2.00	2.00	0.00
1,480.0	11.60	140.31	1,476.0	-45.0	37.4	58.5	2.00	2.00	0.00
1,520.0	12.40	140.31	1,515.2	-51.4	42.7	66.8	2.00	2.00	0.00
1,560.0	13.20	140.31	1,554.2	-58.2	48.3	75.7	2.00	2.00	0.00
1,600.0	14.00	140.31	1,593.1	-65.5	54.3	85.1	2.00	2.00	0.00
1,607.8	14.16	140.31	1,600.6	-66.9	55.6	87.0	2.00	2.00	0.00
1,640.0	14.16	140.31	1,631.8	-73.0	60.6	94.9	0.00	0.00	0.00
1,680.0	14.16	140.31	1,670.6	-80.5	66.8	104.7	0.00	0.00	0.00
1,720.0	14.16	140.31	1,709.4	-88.1	73.1	114.4	0.00	0.00	0.00
1,760.0	14.16	140.31	1,748.2	-95.6	79.3	124.2	0.00	0.00	0.00
1,800.0	14.16	140.31	1,787.0	-103.1	85.6	134.0	0.00	0.00	0.00
1,840.0	14.16	140.31	1,825.8	-110.6	91.8	143.8	0.00	0.00	0.00
1,880.0	14.16	140.31	1,864.6	-118.2	98.1	153.6	0.00	0.00	0.00
1,920.0	14.16	140.31	1,903.3	-125.7	104.3	163.3	0.00	0.00	0.00
1,960.0	14.16	140.31	1,942.1	-133.2	110.6	173.1	0.00	0.00	0.00
2,000.0	14.16	140.31	1,980.9	-140.8	116.8	182.9	0.00	0.00	0.00

Database:	Landmark	Local Co-ordinate Reference:	Well Pioneer 26-11
Company:	Anadarko, Weld County CO	TVD Reference:	WELL @ 4863.0ft (Original Well Elev)
Project:	SEC.2-T2N-R65W	MD Reference:	WELL @ 4863.0ft (Original Well Elev)
Site:	Pioneer 26-11 Pad Sec.2-T2N-R65W	North Reference:	True
Well:	Pioneer 26-11	Survey Calculation Method:	Minimum Curvature
Wellbore:	Wellbore #1		
Design:	Plan #1 (3-1-11)		

Planned Survey									
Measured Depth (ft)	Inclination (°)	Azimuth (°)	Vertical Depth (ft)	+N/-S (ft)	+E/-W (ft)	Vertical Section (ft)	Dogleg Rate (°/100ft)	Build Rate (°/100ft)	Turn Rate (°/100ft)
2,040.0	14.16	140.31	2,019.7	-148.3	123.1	192.7	0.00	0.00	0.00
2,080.0	14.16	140.31	2,058.5	-155.8	129.3	202.5	0.00	0.00	0.00
2,120.0	14.16	140.31	2,097.3	-163.3	135.6	212.3	0.00	0.00	0.00
2,160.0	14.16	140.31	2,136.1	-170.9	141.8	222.0	0.00	0.00	0.00
2,200.0	14.16	140.31	2,174.8	-178.4	148.0	231.8	0.00	0.00	0.00
2,240.0	14.16	140.31	2,213.6	-185.9	154.3	241.6	0.00	0.00	0.00
2,280.0	14.16	140.31	2,252.4	-193.5	160.5	251.4	0.00	0.00	0.00
2,320.0	14.16	140.31	2,291.2	-201.0	166.8	261.2	0.00	0.00	0.00
2,360.0	14.16	140.31	2,330.0	-208.5	173.0	271.0	0.00	0.00	0.00
2,400.0	14.16	140.31	2,368.8	-216.0	179.3	280.7	0.00	0.00	0.00
2,440.0	14.16	140.31	2,407.5	-223.6	185.5	290.5	0.00	0.00	0.00
2,480.0	14.16	140.31	2,446.3	-231.1	191.8	300.3	0.00	0.00	0.00
2,520.0	14.16	140.31	2,485.1	-238.6	198.0	310.1	0.00	0.00	0.00
2,560.0	14.16	140.31	2,523.9	-246.1	204.3	319.9	0.00	0.00	0.00
2,600.0	14.16	140.31	2,562.7	-253.7	210.5	329.7	0.00	0.00	0.00
2,640.0	14.16	140.31	2,601.5	-261.2	216.8	339.4	0.00	0.00	0.00
2,680.0	14.16	140.31	2,640.3	-268.7	223.0	349.2	0.00	0.00	0.00
2,720.0	14.16	140.31	2,679.0	-276.3	229.3	359.0	0.00	0.00	0.00
2,760.0	14.16	140.31	2,717.8	-283.8	235.5	368.8	0.00	0.00	0.00
2,800.0	14.16	140.31	2,756.6	-291.3	241.8	378.6	0.00	0.00	0.00
2,840.0	14.16	140.31	2,795.4	-298.8	248.0	388.3	0.00	0.00	0.00
2,880.0	14.16	140.31	2,834.2	-306.4	254.2	398.1	0.00	0.00	0.00
2,920.0	14.16	140.31	2,873.0	-313.9	260.5	407.9	0.00	0.00	0.00
2,960.0	14.16	140.31	2,911.8	-321.4	266.7	417.7	0.00	0.00	0.00
3,000.0	14.16	140.31	2,950.5	-329.0	273.0	427.5	0.00	0.00	0.00
3,040.0	14.16	140.31	2,989.3	-336.5	279.2	437.3	0.00	0.00	0.00
3,080.0	14.16	140.31	3,028.1	-344.0	285.5	447.0	0.00	0.00	0.00
3,120.0	14.16	140.31	3,066.9	-351.5	291.7	456.8	0.00	0.00	0.00
3,160.0	14.16	140.31	3,105.7	-359.1	298.0	466.6	0.00	0.00	0.00
3,200.0	14.16	140.31	3,144.5	-366.6	304.2	476.4	0.00	0.00	0.00
3,240.0	14.16	140.31	3,183.3	-374.1	310.5	486.2	0.00	0.00	0.00
3,280.0	14.16	140.31	3,222.0	-381.7	316.7	496.0	0.00	0.00	0.00
3,320.0	14.16	140.31	3,260.8	-389.2	323.0	505.7	0.00	0.00	0.00
3,360.0	14.16	140.31	3,299.6	-396.7	329.2	515.5	0.00	0.00	0.00
3,400.0	14.16	140.31	3,338.4	-404.2	335.5	525.3	0.00	0.00	0.00
3,440.0	14.16	140.31	3,377.2	-411.8	341.7	535.1	0.00	0.00	0.00
3,480.0	14.16	140.31	3,416.0	-419.3	348.0	544.9	0.00	0.00	0.00
3,520.0	14.16	140.31	3,454.8	-426.8	354.2	554.7	0.00	0.00	0.00
3,560.0	14.16	140.31	3,493.5	-434.3	360.5	564.4	0.00	0.00	0.00
3,600.0	14.16	140.31	3,532.3	-441.9	366.7	574.2	0.00	0.00	0.00
3,640.0	14.16	140.31	3,571.1	-449.4	372.9	584.0	0.00	0.00	0.00
3,680.0	14.16	140.31	3,609.9	-456.9	379.2	593.8	0.00	0.00	0.00
3,720.0	14.16	140.31	3,648.7	-464.5	385.4	603.6	0.00	0.00	0.00
3,760.0	14.16	140.31	3,687.5	-472.0	391.7	613.3	0.00	0.00	0.00
3,800.0	14.16	140.31	3,726.3	-479.5	397.9	623.1	0.00	0.00	0.00
3,840.0	14.16	140.31	3,765.0	-487.0	404.2	632.9	0.00	0.00	0.00
3,880.0	14.16	140.31	3,803.8	-494.6	410.4	642.7	0.00	0.00	0.00
3,920.0	14.16	140.31	3,842.6	-502.1	416.7	652.5	0.00	0.00	0.00
3,960.0	14.16	140.31	3,881.4	-509.6	422.9	662.3	0.00	0.00	0.00
4,000.0	14.16	140.31	3,920.2	-517.2	429.2	672.0	0.00	0.00	0.00
4,040.0	14.16	140.31	3,959.0	-524.7	435.4	681.8	0.00	0.00	0.00
4,080.0	14.16	140.31	3,997.7	-532.2	441.7	691.6	0.00	0.00	0.00
4,120.0	14.16	140.31	4,036.5	-539.7	447.9	701.4	0.00	0.00	0.00
4,132.9	14.16	140.31	4,049.0	-542.2	449.9	704.5	0.00	0.00	0.00

Database:	Landmark	Local Co-ordinate Reference:	Well Pioneer 26-11
Company:	Anadarko, Weld County CO	TVD Reference:	WELL @ 4863.0ft (Original Well Elev)
Project:	SEC.2-T2N-R65W	MD Reference:	WELL @ 4863.0ft (Original Well Elev)
Site:	Pioneer 26-11 Pad Sec.2-T2N-R65W	North Reference:	True
Well:	Pioneer 26-11	Survey Calculation Method:	Minimum Curvature
Wellbore:	Wellbore #1		
Design:	Plan #1 (3-1-11)		

Planned Survey									
Measured Depth (ft)	Inclination (°)	Azimuth (°)	Vertical Depth (ft)	+N/-S (ft)	+E/-W (ft)	Vertical Section (ft)	Dogleg Rate (°/100ft)	Build Rate (°/100ft)	Turn Rate (°/100ft)
PARKMAN									
4,160.0	14.16	140.31	4,075.3	-547.3	454.2	711.2	0.00	0.00	0.00
4,200.0	14.16	140.31	4,114.1	-554.8	460.4	721.0	0.00	0.00	0.00
4,240.0	14.16	140.31	4,152.9	-562.3	466.7	730.7	0.00	0.00	0.00
4,280.0	14.16	140.31	4,191.7	-569.9	472.9	740.5	0.00	0.00	0.00
4,320.0	14.16	140.31	4,230.5	-577.4	479.2	750.3	0.00	0.00	0.00
4,360.0	14.16	140.31	4,269.2	-584.9	485.4	760.1	0.00	0.00	0.00
4,400.0	14.16	140.31	4,308.0	-592.4	491.6	769.9	0.00	0.00	0.00
4,440.0	14.16	140.31	4,346.8	-600.0	497.9	779.7	0.00	0.00	0.00
4,480.0	14.16	140.31	4,385.6	-607.5	504.1	789.4	0.00	0.00	0.00
4,499.0	14.16	140.31	4,404.0	-611.1	507.1	794.1	0.00	0.00	0.00
SUSSEX									
4,520.0	14.16	140.31	4,424.4	-615.0	510.4	799.2	0.00	0.00	0.00
4,560.0	14.16	140.31	4,463.2	-622.5	516.6	809.0	0.00	0.00	0.00
4,597.3	14.16	140.31	4,499.4	-629.6	522.5	818.1	0.00	0.00	0.00
4,600.0	14.10	140.31	4,502.0	-630.1	522.9	818.8	2.00	-2.00	0.00
4,640.0	13.30	140.31	4,540.8	-637.4	528.9	828.3	2.00	-2.00	0.00
4,680.0	12.50	140.31	4,579.8	-644.2	534.6	837.2	2.00	-2.00	0.00
4,720.0	11.70	140.31	4,618.9	-650.7	540.0	845.6	2.00	-2.00	0.00
4,760.0	10.90	140.31	4,658.1	-656.7	545.0	853.4	2.00	-2.00	0.00
4,800.0	10.10	140.31	4,697.5	-662.3	549.7	860.7	2.00	-2.00	0.00
4,840.0	9.30	140.31	4,736.9	-667.5	554.0	867.4	2.00	-2.00	0.00
4,880.0	8.50	140.31	4,776.4	-672.3	557.9	873.6	2.00	-2.00	0.00
4,920.0	7.70	140.31	4,816.0	-676.6	561.5	879.3	2.00	-2.00	0.00
4,960.0	6.90	140.31	4,855.7	-680.5	564.8	884.4	2.00	-2.00	0.00
5,000.0	6.10	140.31	4,895.4	-684.0	567.7	888.9	2.00	-2.00	0.00
5,040.0	5.30	140.31	4,935.2	-687.1	570.2	892.9	2.00	-2.00	0.00
5,080.0	4.50	140.31	4,975.1	-689.7	572.4	896.3	2.00	-2.00	0.00
5,120.0	3.70	140.31	5,015.0	-691.9	574.2	899.1	2.00	-2.00	0.00
5,160.0	2.90	140.31	5,054.9	-693.7	575.7	901.4	2.00	-2.00	0.00
5,200.0	2.10	140.31	5,094.9	-695.0	576.8	903.2	2.00	-2.00	0.00
5,240.0	1.30	140.31	5,134.9	-696.0	577.5	904.4	2.00	-2.00	0.00
5,280.0	0.50	140.31	5,174.9	-696.4	578.0	905.0	2.00	-2.00	0.00
5,305.1	0.00	0.00	5,200.0	-696.5	578.0	905.1	2.00	-2.00	0.00
TARGET BHL 50'FNL, 50'FEL									
5,320.0	0.00	0.00	5,214.9	-696.5	578.0	905.1	0.00	0.00	0.00
5,360.0	0.00	0.00	5,254.9	-696.5	578.0	905.1	0.00	0.00	0.00
5,400.0	0.00	0.00	5,294.9	-696.5	578.0	905.1	0.00	0.00	0.00
5,440.0	0.00	0.00	5,334.9	-696.5	578.0	905.1	0.00	0.00	0.00
5,480.0	0.00	0.00	5,374.9	-696.5	578.0	905.1	0.00	0.00	0.00
5,520.0	0.00	0.00	5,414.9	-696.5	578.0	905.1	0.00	0.00	0.00
5,560.0	0.00	0.00	5,454.9	-696.5	578.0	905.1	0.00	0.00	0.00
5,600.0	0.00	0.00	5,494.9	-696.5	578.0	905.1	0.00	0.00	0.00
5,640.0	0.00	0.00	5,534.9	-696.5	578.0	905.1	0.00	0.00	0.00
5,680.0	0.00	0.00	5,574.9	-696.5	578.0	905.1	0.00	0.00	0.00
5,720.0	0.00	0.00	5,614.9	-696.5	578.0	905.1	0.00	0.00	0.00
5,760.0	0.00	0.00	5,654.9	-696.5	578.0	905.1	0.00	0.00	0.00
5,800.0	0.00	0.00	5,694.9	-696.5	578.0	905.1	0.00	0.00	0.00
5,840.0	0.00	0.00	5,734.9	-696.5	578.0	905.1	0.00	0.00	0.00
5,880.0	0.00	0.00	5,774.9	-696.5	578.0	905.1	0.00	0.00	0.00
5,920.0	0.00	0.00	5,814.9	-696.5	578.0	905.1	0.00	0.00	0.00
5,960.0	0.00	0.00	5,854.9	-696.5	578.0	905.1	0.00	0.00	0.00
6,000.0	0.00	0.00	5,894.9	-696.5	578.0	905.1	0.00	0.00	0.00

Database:	Landmark	Local Co-ordinate Reference:	Well Pioneer 26-11
Company:	Anadarko, Weld County CO	TVD Reference:	WELL @ 4863.0ft (Original Well Elev)
Project:	SEC.2-T2N-R65W	MD Reference:	WELL @ 4863.0ft (Original Well Elev)
Site:	Pioneer 26-11 Pad Sec.2-T2N-R65W	North Reference:	True
Well:	Pioneer 26-11	Survey Calculation Method:	Minimum Curvature
Wellbore:	Wellbore #1		
Design:	Plan #1 (3-1-11)		

Planned Survey									
Measured Depth (ft)	Inclination (°)	Azimuth (°)	Vertical Depth (ft)	+N/-S (ft)	+E/-W (ft)	Vertical Section (ft)	Dogleg Rate (°/100ft)	Build Rate (°/100ft)	Turn Rate (°/100ft)
6,040.0	0.00	0.00	5,934.9	-696.5	578.0	905.1	0.00	0.00	0.00
6,080.0	0.00	0.00	5,974.9	-696.5	578.0	905.1	0.00	0.00	0.00
6,120.0	0.00	0.00	6,014.9	-696.5	578.0	905.1	0.00	0.00	0.00
6,160.0	0.00	0.00	6,054.9	-696.5	578.0	905.1	0.00	0.00	0.00
6,200.0	0.00	0.00	6,094.9	-696.5	578.0	905.1	0.00	0.00	0.00
6,240.0	0.00	0.00	6,134.9	-696.5	578.0	905.1	0.00	0.00	0.00
6,280.0	0.00	0.00	6,174.9	-696.5	578.0	905.1	0.00	0.00	0.00
6,320.0	0.00	0.00	6,214.9	-696.5	578.0	905.1	0.00	0.00	0.00
6,360.0	0.00	0.00	6,254.9	-696.5	578.0	905.1	0.00	0.00	0.00
6,400.0	0.00	0.00	6,294.9	-696.5	578.0	905.1	0.00	0.00	0.00
6,440.0	0.00	0.00	6,334.9	-696.5	578.0	905.1	0.00	0.00	0.00
6,480.0	0.00	0.00	6,374.9	-696.5	578.0	905.1	0.00	0.00	0.00
6,520.0	0.00	0.00	6,414.9	-696.5	578.0	905.1	0.00	0.00	0.00
6,560.0	0.00	0.00	6,454.9	-696.5	578.0	905.1	0.00	0.00	0.00
6,600.0	0.00	0.00	6,494.9	-696.5	578.0	905.1	0.00	0.00	0.00
6,640.0	0.00	0.00	6,534.9	-696.5	578.0	905.1	0.00	0.00	0.00
6,680.0	0.00	0.00	6,574.9	-696.5	578.0	905.1	0.00	0.00	0.00
6,720.0	0.00	0.00	6,614.9	-696.5	578.0	905.1	0.00	0.00	0.00
6,760.0	0.00	0.00	6,654.9	-696.5	578.0	905.1	0.00	0.00	0.00
6,800.0	0.00	0.00	6,694.9	-696.5	578.0	905.1	0.00	0.00	0.00
6,840.0	0.00	0.00	6,734.9	-696.5	578.0	905.1	0.00	0.00	0.00
6,880.0	0.00	0.00	6,774.9	-696.5	578.0	905.1	0.00	0.00	0.00
6,914.1	0.00	0.00	6,809.0	-696.5	578.0	905.1	0.00	0.00	0.00
NIOBRARA - TARGET CIRCLE 50'FNL, 50'FEL									
6,920.0	0.00	0.00	6,814.9	-696.5	578.0	905.1	0.00	0.00	0.00
6,960.0	0.00	0.00	6,854.9	-696.5	578.0	905.1	0.00	0.00	0.00
7,000.0	0.00	0.00	6,894.9	-696.5	578.0	905.1	0.00	0.00	0.00
7,040.0	0.00	0.00	6,934.9	-696.5	578.0	905.1	0.00	0.00	0.00
7,080.0	0.00	0.00	6,974.9	-696.5	578.0	905.1	0.00	0.00	0.00
7,120.0	0.00	0.00	7,014.9	-696.5	578.0	905.1	0.00	0.00	0.00
7,160.0	0.00	0.00	7,054.9	-696.5	578.0	905.1	0.00	0.00	0.00
7,199.1	0.00	0.00	7,094.0	-696.5	578.0	905.1	0.00	0.00	0.00
CODELL									
7,200.0	0.00	0.00	7,094.9	-696.5	578.0	905.1	0.00	0.00	0.00
7,240.0	0.00	0.00	7,134.9	-696.5	578.0	905.1	0.00	0.00	0.00
7,280.0	0.00	0.00	7,174.9	-696.5	578.0	905.1	0.00	0.00	0.00
7,280.1	0.00	0.00	7,175.0	-696.5	578.0	905.1	0.00	0.00	0.00
GREENHORN									
7,320.0	0.00	0.00	7,214.9	-696.5	578.0	905.1	0.00	0.00	0.00
7,360.0	0.00	0.00	7,254.9	-696.5	578.0	905.1	0.00	0.00	0.00
7,400.0	0.00	0.00	7,294.9	-696.5	578.0	905.1	0.00	0.00	0.00
7,440.0	0.00	0.00	7,334.9	-696.5	578.0	905.1	0.00	0.00	0.00
7,480.0	0.00	0.00	7,374.9	-696.5	578.0	905.1	0.00	0.00	0.00
7,520.0	0.00	0.00	7,414.9	-696.5	578.0	905.1	0.00	0.00	0.00
7,560.0	0.00	0.00	7,454.9	-696.5	578.0	905.1	0.00	0.00	0.00
7,600.0	0.00	0.00	7,494.9	-696.5	578.0	905.1	0.00	0.00	0.00
7,640.0	0.00	0.00	7,534.9	-696.5	578.0	905.1	0.00	0.00	0.00
7,654.1	0.00	0.00	7,549.0	-696.5	578.0	905.1	0.00	0.00	0.00
J SAND									
7,680.0	0.00	0.00	7,574.9	-696.5	578.0	905.1	0.00	0.00	0.00
7,720.0	0.00	0.00	7,614.9	-696.5	578.0	905.1	0.00	0.00	0.00
7,760.0	0.00	0.00	7,654.9	-696.5	578.0	905.1	0.00	0.00	0.00
7,800.0	0.00	0.00	7,694.9	-696.5	578.0	905.1	0.00	0.00	0.00

Database:	Landmark	Local Co-ordinate Reference:	Well Pioneer 26-11
Company:	Anadarko, Weld County CO	TVD Reference:	WELL @ 4863.0ft (Original Well Elev)
Project:	SEC.2-T2N-R65W	MD Reference:	WELL @ 4863.0ft (Original Well Elev)
Site:	Pioneer 26-11 Pad Sec.2-T2N-R65W	North Reference:	True
Well:	Pioneer 26-11	Survey Calculation Method:	Minimum Curvature
Wellbore:	Wellbore #1		
Design:	Plan #1 (3-1-11)		

Planned Survey										
Measured Depth (ft)	Inclination (°)	Azimuth (°)	Vertical Depth (ft)	+N/-S (ft)	+E/-W (ft)	Vertical Section (ft)	Dogleg Rate (°/100ft)	Build Rate (°/100ft)	Turn Rate (°/100ft)	
7,804.1	0.00	0.00	7,699.0	-696.5	578.0	905.1	0.00	0.00	0.00	
HARDLINES 50'N & E OF BHL										

Targets										
Target Name - hit/miss target - Shape	Dip Angle (°)	Dip Dir. (°)	TVD (ft)	+N/-S (ft)	+E/-W (ft)	Northing (ft)	Easting (ft)	Latitude	Longitude	
TARGET CIRCLE 50' - plan hits target center - Circle (radius 50.0)	0.00	0.00	6,809.0	-696.5	578.0	1,302,444.41	3,245,540.64	40° 9' 36.958 N	104° 37' 17.296 W	
TARGET BHL 50'FNL - plan hits target center - Point	0.00	0.00	5,200.0	-696.5	578.0	1,302,444.41	3,245,540.64	40° 9' 36.958 N	104° 37' 17.296 W	
HARDLINES 50'N & E - plan misses target center by 70.7ft at 7804.1ft MD (7699.0 TVD, -696.5 N, 578.0 E) - Polygon	0.00	0.00	7,699.0	-646.5	628.0	1,302,494.92	3,245,590.12	40° 9' 37.452 N	104° 37' 16.652 W	
Point 1			7,699.0	0.0	0.0	1,302,494.92	3,245,590.12			
Point 2			7,699.0	0.0	-200.0	1,302,492.94	3,245,390.13			
Point 3			7,699.0	0.0	0.0	1,302,494.92	3,245,590.12			
Point 4			7,699.0	-200.0	0.0	1,302,294.94	3,245,592.09			

Casing Points						
Measured Depth (ft)	Vertical Depth (ft)	Name	Casing Diameter (")	Hole Diameter (")		
800.0	800.0	8 5/8"	8-5/8	12-1/4		

Formations						
Measured Depth (ft)	Vertical Depth (ft)	Name	Lithology	Dip (°)	Dip Direction (°)	
4,132.9	4,049.0	PARKMAN		0.00		
4,499.0	4,404.0	SUSSEX		0.00		
6,914.1	6,809.0	NIOBRARA		0.00		
7,199.1	7,094.0	CODELL		0.00		
7,280.1	7,175.0	GREENHORN		0.00		
7,654.1	7,549.0	J SAND		0.00		



Directional

Anadarko, Weld County CO

SEC.2-T2N-R65W

Pioneer 26-11 Pad Sec.2-T2N-R65W

Pioneer 26-11

Wellbore #1

Plan #1 (3-1-11)

Anticollision Report

03 March, 2011



Company:	Anadarko, Weld County CO	Local Co-ordinate Reference:	Well Pioneer 26-11
Project:	SEC.2-T2N-R65W	TVD Reference:	WELL @ 4863.0ft (Original Well Elev)
Reference Site:	Pioneer 26-11 Pad Sec.2-T2N-R65W	MD Reference:	WELL @ 4863.0ft (Original Well Elev)
Site Error:	0.0ft	North Reference:	True
Reference Well:	Pioneer 26-11	Survey Calculation Method:	Minimum Curvature
Well Error:	0.0ft	Output errors are at	2.00 sigma
Reference Wellbore	Wellbore #1	Database:	Landmark
Reference Design:	Plan #1 (3-1-11)	Offset TVD Reference:	Offset Datum

Reference	Plan #1 (3-1-11)		
Filter type:	NO GLOBAL FILTER: Using user defined selection & filtering criteria		
Interpolation Method:	Stations	Error Model:	ISCWSA
Depth Range:	Unlimited	Scan Method:	Closest Approach 3D
Results Limited by:	Maximum center-center distance of 10,000.0ft	Error Surface:	Elliptical Conic
Warning Levels Evaluated at:	2.00 Sigma		

Survey Tool Program	Date 3/3/2011			
From (ft)	To (ft)	Survey (Wellbore)	Tool Name	Description
0.0	7,804.1	Plan #1 (3-1-11) (Wellbore #1)	MWD	MWD - Standard

Summary						
Site Name	Reference Measured Depth (ft)	Offset Measured Depth (ft)	Distance Between Centres (ft)	Distance Between Ellipses (ft)	Separation Factor	Warning
Offset Well - Wellbore - Design						
Pioneer 26-11 Pad Sec.2-T2N-R65W						
Pioneer #10-2 (Exist.) - Wellbore #1 - Wellbore #1	0.0	2.0	75.7	75.7	10,000.000	CC
Pioneer #10-2 (Exist.) - Wellbore #1 - Wellbore #1	100.0	101.7	75.9	75.6	235.731	ES
Pioneer #10-2 (Exist.) - Wellbore #1 - Wellbore #1	700.0	673.2	141.7	138.5	44.196	SF
Pioneer #16-2 (Exist.) - Wellbore #1 - Wellbore #1	0.0	2.0	56.6	56.6	10,000.000	CC
Pioneer #16-2 (Exist.) - Wellbore #1 - Wellbore #1	917.3	919.6	58.1	54.2	15.040	ES
Pioneer #16-2 (Exist.) - Wellbore #1 - Wellbore #1	1,100.0	1,102.1	63.3	58.7	13.779	SF
Pioneer #37-2 (Exist.) - Wellbore #1 - Wellbore #1	0.0	2.0	53.5	53.5	10,000.000	CC
Pioneer #37-2 (Exist.) - Wellbore #1 - Wellbore #1	100.0	101.9	53.6	53.3	166.224	ES
Pioneer #37-2 (Exist.) - Wellbore #1 - Wellbore #1	1,000.0	998.4	77.2	73.0	18.327	SF
Pioneer #39-2 (Exist.) - Wellbore #1 - Wellbore #1	0.0	2.0	64.4	64.4	10,000.000	CC
Pioneer #39-2 (Exist.) - Wellbore #1 - Wellbore #1	400.0	402.1	65.8	64.2	39.568	ES
Pioneer #39-2 (Exist.) - Wellbore #1 - Wellbore #1	700.0	698.3	75.4	72.3	24.404	SF

Offset Design		Pioneer 26-11 Pad Sec.2-T2N-R65W - Pioneer #10-2 (Exist.) - Wellbore #1 - Wellbore #1											Offset Site Error:		0.0 ft	
Survey Program: 17-MWD														Offset Well Error:		0.0 ft
Reference		Offset		Semi Major Axis			Distance							Warning		
Measured Depth (ft)	Vertical Depth (ft)	Measured Depth (ft)	Vertical Depth (ft)	Reference (ft)	Offset (ft)	Highside Toolface (°)	Offset Wellbore Centre		Between Centres (ft)	Between Ellipses (ft)	Minimum Separation (ft)	Separation Factor				
							+N/-S (ft)	+E/-W (ft)								
0.0	0.0	2.0	2.0	0.0	0.0	-43.38	55.0	-52.0	75.7	75.7	0.00	N/A	CC			
100.0	100.0	101.7	101.7	0.1	0.2	-43.37	55.2	-52.1	75.9	75.6	0.32	235.731	ES			
200.0	200.0	200.7	200.7	0.3	0.4	-43.25	55.9	-52.6	76.7	76.0	0.77	99.863				
300.0	300.0	297.7	297.6	0.6	0.7	-43.16	58.4	-54.7	80.2	78.9	1.22	65.786				
400.0	400.0	392.4	392.0	0.8	0.9	-43.16	64.1	-60.1	88.5	86.8	1.68	52.608				
500.0	500.0	486.6	485.2	1.0	1.2	-42.99	73.9	-68.8	102.3	100.2	2.17	47.188				
600.0	600.0	581.6	578.7	1.2	1.5	-43.38	85.8	-81.1	120.4	117.7	2.67	45.022				
700.0	700.0	673.2	668.1	1.5	1.9	-44.08	98.8	-95.7	141.7	138.5	3.21	44.196	SF			
800.0	800.0	762.2	754.0	1.7	2.3	-44.69	114.5	-113.3	168.1	164.3	3.78	44.451				
900.0	900.0	851.7	839.4	1.9	2.8	-45.47	131.8	-134.0	198.1	193.7	4.39	45.116				
1,000.0	1,000.0	937.5	920.2	2.1	3.4	173.31	149.5	-156.6	233.1	228.5	4.51	51.696				
1,100.0	1,099.8	1,018.6	995.5	2.3	4.0	172.63	168.0	-180.3	274.8	269.9	4.94	55.602				
1,200.0	1,199.5	1,098.9	1,069.1	2.5	4.6	172.21	188.2	-205.3	322.4	317.1	5.36	60.100				
1,300.0	1,298.7	1,175.7	1,138.7	2.7	5.2	171.97	208.9	-230.2	375.2	369.5	5.77	64.992				
1,400.0	1,397.5	1,250.7	1,206.0	3.0	5.9	171.80	230.1	-255.5	432.6	426.5	6.17	70.167				
1,500.0	1,495.6	1,325.6	1,272.9	3.3	6.6	171.83	252.7	-280.6	493.8	487.3	6.55	75.387				

CC - Min centre to center distance or convergent point, SF - min separation factor, ES - min ellipse separation

Company:	Anadarko, Weld County CO	Local Co-ordinate Reference:	Well Pioneer 26-11
Project:	SEC.2-T2N-R65W	TVD Reference:	WELL @ 4863.0ft (Original Well Elev)
Reference Site:	Pioneer 26-11 Pad Sec.2-T2N-R65W	MD Reference:	WELL @ 4863.0ft (Original Well Elev)
Site Error:	0.0ft	North Reference:	True
Reference Well:	Pioneer 26-11	Survey Calculation Method:	Minimum Curvature
Well Error:	0.0ft	Output errors are at	2.00 sigma
Reference Wellbore	Wellbore #1	Database:	Landmark
Reference Design:	Plan #1 (3-1-11)	Offset TVD Reference:	Offset Datum

Offset Design												Offset Site Error:	0.0ft
Survey Program: 17-MWD												Offset Well Error:	0.0ft
Reference		Offset		Semi Major Axis			Distance						Warning
Measured Depth (ft)	Vertical Depth (ft)	Measured Depth (ft)	Vertical Depth (ft)	Reference (ft)	Offset (ft)	Highside Toolface (°)	Offset Wellbore Centre +N/-S (ft)	+E/-W (ft)	Between Centres (ft)	Between Ellipses (ft)	Minimum Separation (ft)	Separation Factor	
1,607.8	1,600.6	1,400.8	1,339.6	3.7	7.3	171.97	276.6	-305.8	563.7	556.7	6.95	81.161	
1,700.0	1,690.0	1,461.3	1,393.0	4.1	7.8	172.28	296.4	-326.3	625.6	618.3	7.33	85.383	
1,800.0	1,787.0	1,526.2	1,449.7	4.5	8.5	172.60	318.5	-348.7	693.8	686.1	7.75	89.554	
1,900.0	1,883.9	1,594.9	1,509.5	5.0	9.2	172.93	342.4	-372.5	762.7	754.5	8.18	93.193	
2,000.0	1,980.9	1,660.7	1,566.7	5.4	9.8	173.18	365.6	-395.6	832.0	823.3	8.62	96.547	
2,100.0	2,077.9	1,732.9	1,629.1	5.9	10.6	173.38	390.9	-421.5	901.6	892.6	9.07	99.447	
2,200.0	2,174.8	1,811.3	1,697.2	6.4	11.3	173.59	418.4	-449.1	971.0	961.4	9.53	101.876	
2,300.0	2,271.8	1,899.2	1,773.8	6.9	12.1	173.72	448.1	-480.2	1,039.7	1,029.7	10.02	103.785	
2,400.0	2,368.8	1,985.4	1,849.8	7.4	12.9	173.83	476.1	-509.7	1,106.9	1,096.3	10.51	105.356	
2,500.0	2,465.7	2,048.0	1,904.9	7.9	13.5	173.87	496.3	-531.6	1,174.4	1,163.4	10.94	107.314	
2,600.0	2,562.7	2,141.3	1,987.1	8.4	14.3	173.91	526.0	-564.2	1,241.6	1,230.2	11.47	108.256	
2,700.0	2,659.7	2,229.5	2,065.4	8.9	15.1	173.97	553.8	-593.9	1,307.9	1,296.0	11.97	109.236	
2,800.0	2,756.6	2,346.1	2,169.9	9.4	16.1	174.05	589.0	-631.4	1,372.6	1,360.1	12.55	109.361	
2,900.0	2,853.6	2,446.4	2,261.0	10.0	16.9	174.08	617.4	-662.8	1,435.4	1,422.3	13.09	109.662	
3,000.0	2,950.5	2,533.5	2,340.3	10.5	17.6	174.08	641.0	-689.7	1,497.5	1,483.9	13.60	110.115	
3,100.0	3,047.5	2,621.1	2,420.3	11.0	18.3	174.11	665.0	-716.0	1,559.2	1,545.1	14.11	110.464	
3,200.0	3,144.5	2,707.9	2,499.9	11.5	19.0	174.09	687.8	-742.5	1,620.3	1,605.7	14.63	110.735	
3,300.0	3,241.4	2,782.9	2,568.5	12.0	19.6	174.07	707.2	-765.4	1,681.4	1,666.3	15.12	111.178	
3,400.0	3,338.4	2,854.0	2,633.5	12.6	20.2	174.04	725.9	-787.5	1,743.0	1,727.4	15.61	111.659	
3,500.0	3,435.4	2,918.7	2,692.4	13.1	20.8	174.03	743.2	-807.8	1,805.0	1,789.0	16.08	112.264	
3,600.0	3,532.3	2,984.2	2,752.0	13.6	21.3	174.03	761.2	-828.3	1,867.5	1,850.9	16.55	112.845	
3,700.0	3,629.3	3,045.4	2,807.5	14.1	21.8	174.07	779.2	-846.9	1,930.5	1,913.5	17.01	113.516	
3,800.0	3,726.3	3,108.6	2,864.5	14.6	22.4	174.11	798.0	-866.6	1,994.2	1,976.8	17.47	114.139	
3,900.0	3,823.2	3,204.3	2,950.9	15.2	23.2	174.13	825.7	-897.1	2,058.0	2,040.0	18.03	114.162	
4,000.0	3,920.2	3,277.1	3,016.7	15.7	23.8	174.11	845.9	-920.6	2,121.3	2,102.7	18.52	114.556	
4,100.0	4,017.1	3,358.1	3,089.9	16.2	24.5	174.07	868.1	-947.4	2,184.7	2,165.7	19.03	114.786	
4,200.0	4,114.1	3,497.9	3,217.1	16.7	25.7	174.06	906.2	-991.1	2,247.1	2,227.4	19.71	114.028	
4,300.0	4,211.1	3,573.5	3,286.4	17.3	26.3	174.08	926.5	-1,013.6	2,308.3	2,288.1	20.20	114.267	
4,400.0	4,308.0	3,678.4	3,382.6	17.8	27.1	174.08	954.0	-1,044.9	2,369.1	2,348.3	20.78	114.010	
4,500.0	4,405.0	3,775.4	3,472.0	18.3	27.8	174.09	979.0	-1,073.0	2,429.1	2,407.7	21.33	113.870	
4,597.3	4,499.4	3,846.0	3,537.1	18.8	28.4	174.14	998.3	-1,092.3	2,487.4	2,465.6	21.80	114.082	
4,600.0	4,502.0	3,846.0	3,537.1	18.9	28.4	174.15	998.3	-1,092.3	2,489.0	2,467.2	21.82	114.081	
4,700.0	4,599.3	3,892.2	3,579.6	19.2	28.7	174.33	1,011.3	-1,105.1	2,548.2	2,525.8	22.45	113.517	
4,800.0	4,697.5	3,936.0	3,619.5	19.6	29.1	174.47	1,023.4	-1,118.3	2,605.7	2,582.7	23.04	113.084	
4,900.0	4,796.2	4,004.3	3,681.7	19.8	29.7	174.57	1,042.2	-1,139.6	2,661.1	2,637.4	23.69	112.334	
5,000.0	4,895.4	4,130.5	3,796.4	20.1	30.7	174.64	1,077.0	-1,178.8	2,713.6	2,689.1	24.48	110.829	
5,100.0	4,995.0	4,336.3	3,986.3	20.3	32.3	174.66	1,129.3	-1,238.4	2,759.9	2,734.4	25.48	108.326	
5,200.0	5,094.9	5,456.8	5,078.2	20.5	36.5	174.92	1,280.6	-1,382.8	2,782.7	2,754.5	28.28	98.414	
5,305.1	5,200.0	5,582.6	5,204.1	20.6	36.6	-44.76	1,280.8	-1,383.1	2,784.9	2,756.1	28.79	96.748	
5,400.0	5,294.9	5,687.0	5,308.4	20.7	36.6	-44.77	1,280.5	-1,383.1	2,784.7	2,755.6	29.09	95.733	
5,500.0	5,394.9	5,794.0	5,415.4	20.8	36.7	-44.78	1,279.8	-1,382.9	2,784.1	2,754.7	29.40	94.705	
5,600.0	5,494.9	5,894.6	5,516.0	20.9	36.8	-44.78	1,279.3	-1,382.4	2,783.4	2,753.7	29.70	93.712	
5,700.0	5,594.9	6,004.9	5,626.3	21.0	36.8	-44.77	1,278.9	-1,381.5	2,782.6	2,752.6	30.02	92.687	
5,800.0	5,694.9	6,107.5	5,728.9	21.1	36.9	-44.75	1,278.7	-1,380.0	2,781.5	2,751.2	30.33	91.701	
5,900.0	5,794.9	6,207.2	5,828.6	21.2	36.9	-44.73	1,278.5	-1,378.6	2,780.3	2,749.7	30.64	90.739	
6,000.0	5,894.9	6,309.3	5,930.7	21.4	37.0	-44.71	1,278.3	-1,377.2	2,779.2	2,748.3	30.96	89.780	
6,100.0	5,994.9	6,414.3	6,035.6	21.5	37.0	-44.70	1,277.8	-1,375.7	2,777.9	2,746.6	31.28	88.815	
6,200.0	6,094.9	6,544.9	6,166.2	21.6	37.1	-44.68	1,276.9	-1,373.3	2,776.1	2,744.5	31.63	87.759	
6,300.0	6,194.9	6,690.8	6,312.0	21.7	37.1	-44.67	1,273.0	-1,369.2	2,772.0	2,740.0	32.00	86.625	
6,400.0	6,294.9	6,745.4	6,366.5	21.8	37.1	-44.68	1,271.5	-1,367.9	2,768.5	2,736.2	32.25	85.834	
6,500.0	6,394.9	6,806.0	6,427.2	22.0	37.2	-44.68	1,271.1	-1,367.5	2,767.2	2,734.7	32.52	85.088	
6,530.3	6,425.2	6,806.0	6,427.2	22.0	37.2	-44.68	1,271.1	-1,367.5	2,767.1	2,734.5	32.58	84.938	

CC - Min centre to center distance or convergent point, SF - min separation factor, ES - min ellipse separation

Company:	Anadarko, Weld County CO	Local Co-ordinate Reference:	Well Pioneer 26-11
Project:	SEC.2-T2N-R65W	TVD Reference:	WELL @ 4863.0ft (Original Well Elev)
Reference Site:	Pioneer 26-11 Pad Sec.2-T2N-R65W	MD Reference:	WELL @ 4863.0ft (Original Well Elev)
Site Error:	0.0ft	North Reference:	True
Reference Well:	Pioneer 26-11	Survey Calculation Method:	Minimum Curvature
Well Error:	0.0ft	Output errors are at	2.00 sigma
Reference Wellbore	Wellbore #1	Database:	Landmark
Reference Design:	Plan #1 (3-1-11)	Offset TVD Reference:	Offset Datum

Offset Design												Offset Site Error:	0.0 ft
Pioneer 26-11 Pad Sec.2-T2N-R65W - Pioneer #10-2 (Exist.) - Wellbore #1 - Wellbore #1												Offset Well Error:	0.0 ft
Survey Program: 17-MWD													
Reference		Offset		Semi Major Axis			Distance						
Measured Depth (ft)	Vertical Depth (ft)	Measured Depth (ft)	Vertical Depth (ft)	Reference (ft)	Offset (ft)	Highside Toolface (°)	Offset Wellbore Centre +N/-S (ft)	+E/-W (ft)	Between Centres (ft)	Between Ellipses (ft)	Minimum Separation (ft)	Separation Factor	Warning
6,600.0	6,494.9	6,847.4	6,468.6	22.1	37.2	-44.67	1,271.4	-1,367.7	2,767.5	2,734.8	32.77	84.453	
6,700.0	6,594.9	6,933.7	6,554.8	22.2	37.3	-44.66	1,272.6	-1,368.1	2,768.9	2,735.8	33.09	83.674	
6,800.0	6,694.9	7,035.7	6,656.9	22.4	37.4	-44.65	1,274.2	-1,368.8	2,770.4	2,737.0	33.44	82.846	
6,900.0	6,794.9	7,134.8	6,755.9	22.5	37.5	-44.64	1,275.4	-1,369.4	2,771.8	2,738.0	33.79	82.040	
7,000.0	6,894.9	7,236.4	6,857.6	22.6	37.6	-44.64	1,276.7	-1,370.3	2,773.3	2,739.2	34.14	81.239	
7,100.0	6,994.9	7,341.8	6,963.0	22.8	37.7	-44.63	1,277.8	-1,371.2	2,774.6	2,740.1	34.50	80.431	
7,200.0	7,094.9	7,458.3	7,079.4	22.9	37.8	-44.64	1,278.5	-1,372.0	2,775.5	2,740.6	34.87	79.585	
7,300.0	7,194.9	7,562.2	7,183.3	23.0	37.9	-44.63	1,279.0	-1,372.3	2,776.0	2,740.8	35.23	78.791	
7,400.0	7,294.9	7,666.1	7,287.2	23.2	38.0	-44.63	1,279.4	-1,372.5	2,776.5	2,740.9	35.59	78.010	
7,500.0	7,394.9	7,665.0	7,286.1	23.3	38.0	-44.63	1,279.4	-1,372.5	2,778.7	2,742.9	35.78	77.656	
7,600.0	7,494.9	7,665.0	7,286.1	23.4	38.0	-44.63	1,279.4	-1,372.5	2,784.5	2,748.5	35.98	77.399	
7,700.0	7,594.9	7,665.0	7,286.1	23.6	38.0	-44.63	1,279.4	-1,372.5	2,793.8	2,757.6	36.17	77.242	
7,804.1	7,699.0	7,665.0	7,286.1	23.7	38.0	-44.63	1,279.4	-1,372.5	2,807.3	2,770.9	36.37	77.182	

Company:	Anadarko, Weld County CO	Local Co-ordinate Reference:	Well Pioneer 26-11
Project:	SEC.2-T2N-R65W	TVD Reference:	WELL @ 4863.0ft (Original Well Elev)
Reference Site:	Pioneer 26-11 Pad Sec.2-T2N-R65W	MD Reference:	WELL @ 4863.0ft (Original Well Elev)
Site Error:	0.0ft	North Reference:	True
Reference Well:	Pioneer 26-11	Survey Calculation Method:	Minimum Curvature
Well Error:	0.0ft	Output errors are at	2.00 sigma
Reference Wellbore	Wellbore #1	Database:	Landmark
Reference Design:	Plan #1 (3-1-11)	Offset TVD Reference:	Offset Datum

Offset Design												Offset Site Error:	0.0ft
Survey Program: 17-MWD												Offset Well Error:	0.0ft
Reference		Offset		Semi Major Axis			Distance						
Measured Depth (ft)	Vertical Depth (ft)	Measured Depth (ft)	Vertical Depth (ft)	Reference (ft)	Offset (ft)	Highside Toolface (°)	Offset Wellbore Centre +N/-S (ft)	+E/-W (ft)	Between Centres (ft)	Between Ellipses (ft)	Minimum Separation (ft)	Separation Factor	Warning
0.0	0.0	2.0	2.0	0.0	0.0	-68.89	20.4	-52.8	56.6	56.6	0.00	N/A	CC
100.0	100.0	101.9	101.9	0.1	0.2	-68.84	20.5	-52.9	56.7	56.4	0.32	175.919	
200.0	200.0	201.9	201.8	0.3	0.4	-68.73	20.7	-53.1	57.0	56.2	0.76	74.837	
300.0	300.0	301.8	301.8	0.6	0.6	-68.96	20.6	-53.4	57.2	56.1	1.19	47.955	
400.0	400.0	401.7	401.7	0.8	0.8	-69.23	20.5	-53.9	57.7	56.0	1.63	35.309	
500.0	500.0	501.7	501.7	1.0	1.1	-69.49	20.4	-54.5	58.2	56.1	2.07	28.097	
600.0	600.0	601.7	601.7	1.2	1.3	-69.82	20.3	-55.1	58.7	56.2	2.50	23.468	
700.0	700.0	702.0	702.0	1.5	1.5	-69.92	20.2	-55.4	59.0	56.0	2.94	20.084	
800.0	800.0	802.3	802.3	1.7	1.7	-69.89	20.2	-55.1	58.7	55.3	3.37	17.435	
900.0	900.0	902.3	902.3	1.9	1.9	-69.87	20.0	-54.6	58.2	54.4	3.79	15.328	
917.3	917.3	919.6	919.6	1.9	1.9	149.85	20.0	-54.5	58.1	54.2	3.86	15.040	ES
1,000.0	1,000.0	1,002.3	1,002.3	2.1	2.1	150.65	19.8	-54.1	59.2	55.0	4.20	14.083	
1,100.0	1,099.8	1,102.1	1,102.1	2.3	2.3	152.81	19.5	-53.7	63.3	58.7	4.59	13.779	SF
1,200.0	1,199.5	1,201.7	1,201.7	2.5	2.5	155.75	19.1	-53.5	70.8	65.8	4.99	14.173	
1,300.0	1,298.7	1,301.0	1,301.0	2.7	2.7	158.92	18.7	-53.3	81.7	76.3	5.39	15.146	
1,400.0	1,397.5	1,399.9	1,399.9	3.0	2.9	162.03	18.2	-53.1	96.0	90.2	5.79	16.583	
1,500.0	1,495.6	1,498.2	1,498.2	3.3	3.1	164.84	17.9	-52.8	113.9	107.7	6.19	18.400	
1,607.8	1,600.6	1,603.3	1,603.3	3.7	3.4	167.37	17.5	-52.4	137.0	130.4	6.62	20.711	
1,700.0	1,690.0	1,692.8	1,692.8	4.1	3.5	169.11	17.1	-52.1	158.7	151.7	7.01	22.624	
1,800.0	1,787.0	1,789.8	1,789.8	4.5	3.7	170.51	16.7	-51.8	182.3	174.8	7.45	24.464	
1,900.0	1,883.9	1,886.2	1,886.2	5.0	4.0	171.61	16.5	-51.6	206.2	198.3	7.90	26.112	
2,000.0	1,980.9	1,982.5	1,982.4	5.4	4.2	172.55	16.7	-51.5	230.5	222.1	8.34	27.619	
2,100.0	2,077.9	2,078.2	2,078.2	5.9	4.4	173.37	17.3	-51.4	255.1	246.3	8.80	29.008	
2,200.0	2,174.8	2,173.2	2,173.1	6.4	4.6	174.05	18.3	-51.7	280.4	271.2	9.25	30.324	
2,300.0	2,271.8	2,267.7	2,267.7	6.9	4.8	174.63	19.9	-52.4	306.4	296.7	9.70	31.580	
2,400.0	2,368.8	2,363.3	2,363.2	7.4	5.0	175.14	21.8	-53.5	332.9	322.7	10.16	32.767	
2,500.0	2,465.7	2,460.2	2,460.1	7.9	5.2	175.55	23.7	-54.6	359.4	348.8	10.62	33.835	
2,600.0	2,562.7	2,557.2	2,557.1	8.4	5.4	175.88	25.3	-55.8	385.8	374.7	11.09	34.794	
2,700.0	2,659.7	2,654.6	2,654.5	8.9	5.6	176.16	26.8	-56.8	412.0	400.4	11.55	35.668	
2,800.0	2,756.6	2,752.2	2,752.0	9.4	5.8	176.43	28.2	-57.7	437.9	425.9	12.01	36.452	
2,900.0	2,853.6	2,849.9	2,849.7	10.0	6.0	176.69	29.6	-58.2	463.7	451.2	12.48	37.158	
3,000.0	2,950.5	2,947.1	2,947.0	10.5	6.2	176.93	30.8	-58.5	489.3	476.3	12.95	37.795	
3,100.0	3,047.5	3,044.4	3,044.2	11.0	6.4	177.14	32.0	-58.8	514.8	501.3	13.41	38.377	
3,200.0	3,144.5	3,141.7	3,141.5	11.5	6.6	177.33	33.1	-59.1	540.1	526.2	13.88	38.909	
3,300.0	3,241.4	3,238.9	3,238.7	12.0	6.8	177.49	34.0	-59.3	565.4	551.1	14.36	39.383	
3,400.0	3,338.4	3,336.3	3,336.1	12.6	7.0	177.63	34.8	-59.6	590.6	575.8	14.83	39.818	
3,500.0	3,435.4	3,434.2	3,434.0	13.1	7.2	177.74	35.4	-59.9	615.7	600.4	15.31	40.211	
3,600.0	3,532.3	3,533.3	3,533.1	13.6	7.4	177.83	35.7	-60.1	640.5	624.7	15.79	40.550	
3,700.0	3,629.3	3,632.6	3,632.4	14.1	7.6	177.89	35.5	-60.3	664.9	648.7	16.28	40.846	
3,800.0	3,726.3	3,730.1	3,730.0	14.6	7.8	177.93	35.0	-60.5	689.1	672.4	16.76	41.117	
3,900.0	3,823.2	3,826.7	3,826.5	15.2	8.0	177.96	34.5	-60.7	713.4	696.1	17.24	41.380	
4,000.0	3,920.2	3,923.1	3,922.9	15.7	8.2	177.98	34.0	-61.1	737.7	720.0	17.72	41.631	
4,100.0	4,017.1	4,018.7	4,018.5	16.2	8.4	177.99	33.6	-61.6	762.1	743.9	18.19	41.888	
4,200.0	4,114.1	4,114.1	4,113.9	16.7	8.6	178.01	33.3	-62.1	786.7	768.1	18.67	42.144	
4,300.0	4,211.1	4,207.0	4,206.8	17.3	8.8	178.03	33.3	-62.7	811.5	792.4	19.14	42.409	
4,400.0	4,308.0	4,304.5	4,304.3	17.8	9.0	178.06	33.4	-63.4	836.5	816.9	19.61	42.656	
4,500.0	4,405.0	4,399.4	4,399.2	18.3	9.2	178.09	33.8	-64.1	861.7	841.7	20.08	42.913	
4,597.3	4,499.4	4,491.8	4,491.6	18.8	9.4	178.13	34.4	-64.8	886.5	865.9	20.54	43.161	
4,600.0	4,502.0	4,494.3	4,494.1	18.9	9.4	178.13	34.4	-64.9	887.2	866.6	20.55	43.164	
4,700.0	4,599.3	4,589.5	4,589.3	19.2	9.6	178.20	35.4	-65.5	911.0	889.9	21.06	43.264	
4,800.0	4,697.5	4,685.4	4,685.2	19.6	9.8	178.28	36.7	-66.1	931.6	910.1	21.53	43.270	
4,900.0	4,796.2	4,781.8	4,781.5	19.8	10.0	178.37	38.4	-66.5	949.1	927.1	21.97	43.189	

CC - Min centre to center distance or convergent point, SF - min separation factor, ES - min ellipse separation

Company:	Anadarko, Weld County CO	Local Co-ordinate Reference:	Well Pioneer 26-11
Project:	SEC.2-T2N-R65W	TVD Reference:	WELL @ 4863.0ft (Original Well Elev)
Reference Site:	Pioneer 26-11 Pad Sec.2-T2N-R65W	MD Reference:	WELL @ 4863.0ft (Original Well Elev)
Site Error:	0.0ft	North Reference:	True
Reference Well:	Pioneer 26-11	Survey Calculation Method:	Minimum Curvature
Well Error:	0.0ft	Output errors are at	2.00 sigma
Reference Wellbore	Wellbore #1	Database:	Landmark
Reference Design:	Plan #1 (3-1-11)	Offset TVD Reference:	Offset Datum

Offset Design													Offset Site Error:		0.0 ft
Survey Program: 17-MWD													Offset Well Error:		0.0 ft
Reference		Offset		Semi Major Axis			Distance							Warning	
Measured Depth (ft)	Vertical Depth (ft)	Measured Depth (ft)	Vertical Depth (ft)	Reference (ft)	Offset (ft)	Highside Toolface (°)	Offset Wellbore Centre +N/-S (ft)	+E/-W (ft)	Between Centres (ft)	Between Ellipses (ft)	Minimum Separation (ft)	Separation Factor			
5,000.0	4,895.4	4,878.3	4,878.0	20.1	10.2	178.49	40.8	-66.6	963.3	940.9	22.39	43.030			
5,100.0	4,995.0	4,975.1	4,974.8	20.3	10.4	178.63	43.7	-66.4	974.3	951.6	22.77	42.799			
5,200.0	5,094.9	5,072.8	5,072.5	20.5	10.6	178.80	47.2	-65.9	982.1	959.0	23.11	42.494			
5,305.1	5,200.0	5,176.4	5,175.9	20.6	10.8	-40.70	51.3	-65.2	986.8	963.3	23.45	42.075			
5,400.0	5,294.9	5,269.8	5,269.2	20.7	11.0	-40.52	55.3	-64.5	989.3	965.5	23.81	41.545			
5,500.0	5,394.9	5,369.3	5,368.7	20.8	11.3	-40.34	59.5	-63.9	992.2	968.0	24.19	41.011			
5,600.0	5,494.9	5,469.2	5,468.5	20.9	11.5	-40.21	63.1	-64.1	995.0	970.4	24.57	40.490			
5,700.0	5,594.9	5,569.8	5,569.0	21.0	11.7	-40.14	66.0	-65.1	997.9	972.9	24.96	39.978			
5,800.0	5,694.9	5,675.5	5,674.7	21.1	11.9	-40.12	68.3	-66.4	1,000.4	975.0	25.36	39.450			
5,900.0	5,794.9	5,781.2	5,780.4	21.2	12.1	-40.13	69.7	-67.9	1,002.3	976.6	25.76	38.914			
6,000.0	5,894.9	5,887.3	5,886.5	21.4	12.4	-40.17	70.3	-69.4	1,003.7	977.5	26.16	38.369			
6,100.0	5,994.9	5,993.7	5,992.9	21.5	12.6	-40.25	70.1	-70.9	1,004.4	977.8	26.56	37.814			
6,200.0	6,094.9	6,099.4	6,098.5	21.6	12.8	-40.35	69.0	-72.3	1,004.4	977.5	26.96	37.252			
6,273.5	6,168.4	6,171.2	6,170.4	21.7	13.0	-40.44	67.9	-73.5	1,004.4	977.1	27.25	36.858			
6,300.0	6,194.9	6,197.1	6,196.2	21.7	13.0	-40.48	67.4	-74.0	1,004.4	977.0	27.35	36.720			
6,400.0	6,294.9	6,294.8	6,293.9	21.8	13.2	-40.66	65.6	-76.5	1,004.6	976.8	27.74	36.209			
6,500.0	6,394.9	6,396.9	6,395.9	22.0	13.4	-40.87	63.3	-79.6	1,004.9	976.8	28.14	35.706			
6,600.0	6,494.9	6,507.9	6,506.9	22.1	13.7	-41.07	60.7	-81.9	1,004.5	975.9	28.56	35.166			
6,700.0	6,594.9	6,619.0	6,617.9	22.2	13.9	-41.20	57.9	-82.4	1,002.9	973.9	28.98	34.604			
6,800.0	6,694.9	6,719.0	6,717.9	22.4	14.1	-41.27	55.5	-82.0	1,000.8	971.4	29.38	34.067			
6,900.0	6,794.9	6,817.9	6,816.7	22.5	14.3	-41.32	53.4	-81.3	998.7	969.0	29.77	33.550			
7,000.0	6,894.9	6,916.7	6,915.5	22.6	14.5	-41.34	51.7	-80.3	996.8	966.6	30.16	33.049			
7,100.0	6,994.9	7,015.5	7,014.3	22.8	14.7	-41.37	50.1	-79.4	995.0	964.4	30.56	32.561			
7,200.0	7,094.9	7,114.3	7,113.1	22.9	14.9	-41.40	48.4	-78.8	993.3	962.3	30.95	32.088			
7,300.0	7,194.9	7,212.6	7,211.4	23.0	15.1	-41.44	46.8	-78.3	991.7	960.4	31.35	31.631			
7,381.9	7,276.7	7,280.0	7,278.8	23.1	15.2	-41.47	45.8	-78.0	990.6	959.0	31.65	31.298			
7,400.0	7,294.9	7,280.0	7,278.8	23.2	15.2	-41.47	45.8	-78.0	990.8	959.1	31.69	31.269			
7,500.0	7,394.9	7,280.0	7,278.8	23.3	15.2	-41.47	45.8	-78.0	997.7	965.8	31.88	31.294			
7,600.0	7,494.9	7,280.0	7,278.8	23.4	15.2	-41.47	45.8	-78.0	1,014.4	982.3	32.07	31.626			
7,700.0	7,594.9	7,280.0	7,278.8	23.6	15.2	-41.47	45.8	-78.0	1,040.5	1,008.2	32.27	32.243			
7,804.1	7,699.0	7,280.0	7,278.8	23.7	15.2	-41.47	45.8	-78.0	1,076.9	1,044.4	32.47	33.162			

Company:	Anadarko, Weld County CO	Local Co-ordinate Reference:	Well Pioneer 26-11
Project:	SEC.2-T2N-R65W	TVD Reference:	WELL @ 4863.0ft (Original Well Elev)
Reference Site:	Pioneer 26-11 Pad Sec.2-T2N-R65W	MD Reference:	WELL @ 4863.0ft (Original Well Elev)
Site Error:	0.0ft	North Reference:	True
Reference Well:	Pioneer 26-11	Survey Calculation Method:	Minimum Curvature
Well Error:	0.0ft	Output errors are at	2.00 sigma
Reference Wellbore	Wellbore #1	Database:	Landmark
Reference Design:	Plan #1 (3-1-11)	Offset TVD Reference:	Offset Datum

Offset Design													Offset Site Error:	0.0ft
Survey Program: 17-MWD													Offset Well Error:	0.0ft
Reference		Offset		Semi Major Axis			Distance							Warning
Measured Depth (ft)	Vertical Depth (ft)	Measured Depth (ft)	Vertical Depth (ft)	Reference (ft)	Offset (ft)	Highside Toolface (°)	Offset Wellbore Centre +N/-S (ft)	+E/-W (ft)	Between Centres (ft)	Between Ellipses (ft)	Minimum Separation (ft)	Separation Factor		
0.0	0.0	2.0	2.0	0.0	0.0	-86.10	3.6	-53.4	53.5	53.5	0.00	N/A	CC	
100.0	100.0	101.9	101.9	0.1	0.2	-85.85	3.9	-53.4	53.6	53.3	0.32	166.224	ES	
200.0	200.0	201.5	201.4	0.3	0.4	-85.20	4.5	-53.9	54.1	53.3	0.76	70.820		
300.0	300.0	301.0	300.9	0.6	0.6	-85.22	4.6	-55.4	55.6	54.4	1.20	46.412		
400.0	400.0	400.5	400.5	0.8	0.9	-85.53	4.5	-57.7	57.9	56.2	1.64	35.299		
500.0	500.0	500.2	500.1	1.0	1.1	-86.33	3.9	-60.6	60.8	58.7	2.08	29.204		
600.0	600.0	600.2	600.0	1.2	1.3	-87.44	2.9	-63.7	63.8	61.3	2.52	25.371		
700.0	700.0	700.1	699.9	1.5	1.5	-88.50	1.8	-66.9	66.9	64.0	2.95	22.687		
800.0	800.0	800.4	800.1	1.7	1.7	-89.50	0.6	-69.8	69.8	66.5	3.38	20.658		
900.0	900.0	900.3	900.0	1.9	1.9	-90.53	-0.7	-72.6	72.6	68.8	3.82	19.027		
1,000.0	1,000.0	998.4	998.1	2.1	2.1	128.65	-2.6	-76.0	77.2	73.0	4.21	18.327	SF	
1,100.0	1,099.8	1,096.1	1,095.5	2.3	2.4	128.30	-7.0	-82.0	86.7	82.0	4.62	18.765		
1,200.0	1,199.5	1,192.6	1,191.5	2.5	2.6	128.66	-12.8	-90.1	100.6	95.6	5.04	19.943		
1,300.0	1,298.7	1,290.0	1,288.0	2.7	2.9	129.19	-20.5	-100.2	118.7	113.2	5.49	21.601		
1,400.0	1,397.5	1,385.9	1,382.7	3.0	3.2	129.45	-30.8	-111.2	140.0	134.0	5.98	23.424		
1,500.0	1,495.6	1,479.2	1,474.4	3.3	3.5	129.65	-42.8	-123.5	165.2	158.7	6.50	25.397		
1,607.8	1,600.6	1,578.8	1,571.7	3.7	3.9	129.98	-57.1	-138.8	197.0	189.9	7.13	27.642		
1,700.0	1,690.0	1,665.7	1,656.3	4.1	4.3	130.51	-70.9	-153.2	226.4	218.7	7.71	29.350		
1,800.0	1,787.0	1,760.6	1,748.7	4.5	4.6	130.86	-86.4	-168.8	258.1	249.8	8.36	30.882		
1,900.0	1,883.9	1,855.3	1,840.9	5.0	5.0	131.32	-101.0	-184.4	289.9	280.9	9.00	32.214		
2,000.0	1,980.9	1,951.3	1,934.6	5.4	5.4	131.76	-115.4	-200.1	321.6	311.9	9.67	33.251		
2,100.0	2,077.9	2,049.8	2,030.6	5.9	5.7	132.08	-130.6	-215.5	352.6	342.2	10.37	34.016		
2,200.0	2,174.8	2,147.0	2,125.7	6.4	6.1	132.52	-144.4	-229.9	382.9	371.8	11.04	34.671		
2,300.0	2,271.8	2,244.6	2,221.4	6.9	6.5	132.98	-158.0	-243.6	412.5	400.8	11.73	35.164		
2,400.0	2,368.8	2,336.8	2,311.8	7.4	6.8	133.41	-170.2	-256.9	442.5	430.1	12.42	35.633		
2,500.0	2,465.7	2,431.5	2,404.5	7.9	7.2	133.72	-183.4	-270.8	472.7	459.6	13.13	36.009		
2,600.0	2,562.7	2,525.0	2,496.2	8.4	7.6	134.05	-195.9	-284.9	503.5	489.6	13.84	36.390		
2,700.0	2,659.7	2,622.2	2,591.4	8.9	8.0	134.29	-209.5	-299.2	533.8	519.2	14.56	36.663		
2,800.0	2,756.6	2,717.5	2,684.5	9.4	8.4	134.44	-223.3	-313.7	564.5	549.2	15.29	36.910		
2,900.0	2,853.6	2,812.2	2,777.1	10.0	8.8	134.52	-237.7	-327.3	594.4	578.4	16.03	37.082		
3,000.0	2,950.5	2,902.6	2,865.3	10.5	9.1	134.59	-251.2	-341.6	625.6	608.8	16.75	37.342		
3,100.0	3,047.5	3,001.4	2,961.9	11.0	9.5	134.70	-265.7	-356.7	656.4	638.9	17.50	37.517		
3,200.0	3,144.5	3,097.0	3,055.4	11.5	9.9	134.82	-279.3	-371.1	687.0	668.8	18.22	37.697		
3,300.0	3,241.4	3,197.1	3,153.5	12.0	10.3	135.00	-292.9	-385.9	717.4	698.5	18.96	37.837		
3,400.0	3,338.4	3,306.3	3,260.8	12.6	10.7	135.26	-307.0	-400.4	746.6	726.9	19.72	37.863		
3,500.0	3,435.4	3,402.0	3,354.8	13.1	11.1	135.42	-320.0	-412.4	774.8	754.3	20.44	37.897		
3,600.0	3,532.3	3,507.8	3,458.9	13.6	11.5	135.62	-334.2	-424.7	802.3	781.1	21.20	37.847		
3,700.0	3,629.3	3,601.1	3,550.8	14.1	11.8	135.80	-346.3	-435.5	829.7	807.8	21.91	37.874		
3,800.0	3,726.3	3,698.8	3,647.2	14.6	12.2	136.04	-358.2	-446.1	856.5	833.9	22.62	37.862		
3,900.0	3,823.2	3,775.4	3,722.6	15.2	12.5	136.17	-368.2	-455.7	884.9	861.6	23.28	38.007		
4,000.0	3,920.2	3,865.9	3,811.2	15.7	12.8	136.21	-381.4	-468.4	914.5	890.5	24.02	38.078		
4,100.0	4,017.1	3,949.4	3,892.8	16.2	13.2	136.24	-393.4	-480.8	945.0	920.3	24.73	38.219		
4,200.0	4,114.1	4,039.3	3,980.7	16.7	13.6	136.26	-406.4	-495.0	976.3	950.9	25.46	38.343		
4,300.0	4,211.1	4,121.9	4,061.1	17.3	14.0	136.23	-419.0	-508.9	1,008.5	982.3	26.19	38.509		
4,400.0	4,308.0	4,232.2	4,168.4	17.8	14.5	136.12	-437.0	-527.4	1,040.5	1,013.5	27.03	38.498		
4,500.0	4,405.0	4,333.3	4,266.6	18.3	14.9	135.97	-454.8	-543.2	1,071.3	1,043.5	27.84	38.481		
4,597.3	4,499.4	4,412.9	4,344.1	18.8	15.3	135.91	-467.7	-555.9	1,101.7	1,073.2	28.55	38.590		
4,600.0	4,502.0	4,414.9	4,346.0	18.9	15.3	135.93	-468.0	-556.2	1,102.6	1,074.0	28.57	38.594		
4,700.0	4,599.3	4,495.3	4,424.3	19.2	15.7	136.32	-480.0	-570.2	1,134.1	1,104.8	29.23	38.792		
4,800.0	4,697.5	4,618.2	4,544.3	19.6	16.2	136.53	-497.4	-590.5	1,162.5	1,132.4	30.01	38.736		
4,900.0	4,796.2	4,715.4	4,639.4	19.8	16.6	136.64	-511.0	-605.0	1,186.9	1,156.2	30.66	38.714		
5,000.0	4,895.4	4,846.6	4,767.8	20.1	17.1	136.43	-530.2	-624.2	1,208.7	1,177.3	31.41	38.486		

CC - Min centre to center distance or convergent point, SF - min separation factor, ES - min ellipse separation

Company:	Anadarko, Weld County CO	Local Co-ordinate Reference:	Well Pioneer 26-11
Project:	SEC.2-T2N-R65W	TVD Reference:	WELL @ 4863.0ft (Original Well Elev)
Reference Site:	Pioneer 26-11 Pad Sec.2-T2N-R65W	MD Reference:	WELL @ 4863.0ft (Original Well Elev)
Site Error:	0.0ft	North Reference:	True
Reference Well:	Pioneer 26-11	Survey Calculation Method:	Minimum Curvature
Well Error:	0.0ft	Output errors are at	2.00 sigma
Reference Wellbore	Wellbore #1	Database:	Landmark
Reference Design:	Plan #1 (3-1-11)	Offset TVD Reference:	Offset Datum

Offset Design Pioneer 26-11 Pad Sec.2-T2N-R65W - Pioneer #37-2 (Exist.) - Wellbore #1 - Wellbore #1												Offset Site Error:	0.0 ft
Survey Program: 17-MWD												Offset Well Error:	0.0 ft
Reference		Offset		Semi Major Axis			Distance						
Measured Depth (ft)	Vertical Depth (ft)	Measured Depth (ft)	Vertical Depth (ft)	Reference (ft)	Offset (ft)	Highside Toolface (°)	Offset Wellbore Centre +N/-S (ft)	+E/-W (ft)	Between Centres (ft)	Between Ellipses (ft)	Minimum Separation (ft)	Separation Factor	Warning
5,100.0	4,995.0	4,934.6	4,854.1	20.3	17.5	136.26	-543.0	-635.6	1,226.3	1,194.3	31.95	38.379	
5,200.0	5,094.9	5,077.9	4,995.2	20.5	18.0	135.72	-562.0	-652.3	1,240.5	1,207.9	32.63	38.020	
5,305.1	5,200.0	5,166.2	5,082.5	20.6	18.3	-84.24	-571.5	-660.7	1,250.8	1,217.7	33.05	37.843	
5,400.0	5,294.9	5,284.5	5,199.8	20.7	18.7	-84.73	-581.2	-672.7	1,259.8	1,226.3	33.51	37.599	
5,500.0	5,394.9	5,431.7	5,346.6	20.8	19.0	-85.06	-587.6	-681.2	1,264.9	1,231.0	33.95	37.262	
5,600.0	5,494.9	5,562.3	5,477.1	20.9	19.2	-85.13	-589.0	-684.5	1,267.2	1,232.9	34.28	36.962	
5,700.0	5,594.9	5,671.9	5,586.7	21.0	19.4	-85.16	-589.4	-685.7	1,268.3	1,233.7	34.58	36.680	
5,800.0	5,694.9	5,773.2	5,688.0	21.1	19.5	-85.19	-590.2	-686.5	1,269.1	1,234.2	34.87	36.398	
5,900.0	5,794.9	5,874.5	5,789.3	21.2	19.6	-85.24	-591.2	-687.3	1,269.7	1,234.6	35.16	36.112	
6,000.0	5,894.9	5,975.5	5,890.3	21.4	19.8	-85.30	-592.4	-687.9	1,270.3	1,234.8	35.46	35.823	
6,100.0	5,994.9	6,078.5	5,993.3	21.5	19.9	-85.35	-593.5	-688.5	1,270.7	1,234.9	35.76	35.531	
6,200.0	6,094.9	6,178.8	6,093.6	21.6	20.1	-85.40	-594.5	-688.8	1,270.9	1,234.9	36.06	35.242	
6,300.0	6,194.9	6,282.5	6,197.3	21.7	20.2	-85.45	-595.8	-689.0	1,271.0	1,234.7	36.37	34.944	
6,400.0	6,294.9	6,382.5	6,297.3	21.8	20.4	-85.52	-597.1	-689.1	1,271.0	1,234.3	36.68	34.649	
6,500.0	6,394.9	6,482.5	6,397.3	22.0	20.5	-85.56	-598.2	-689.1	1,271.0	1,234.0	36.99	34.360	
6,533.0	6,427.8	6,515.1	6,429.8	22.0	20.6	-85.58	-598.5	-689.1	1,271.0	1,233.9	37.09	34.266	
6,600.0	6,494.9	6,581.7	6,496.5	22.1	20.7	-85.60	-599.1	-689.2	1,271.0	1,233.7	37.30	34.077	
6,700.0	6,594.9	6,682.0	6,596.8	22.2	20.8	-85.64	-600.0	-689.3	1,271.0	1,233.4	37.61	33.796	
6,800.0	6,694.9	6,783.3	6,698.1	22.4	21.0	-85.69	-600.9	-689.3	1,271.0	1,233.0	37.92	33.513	
6,900.0	6,794.9	6,886.6	6,801.4	22.5	21.1	-85.74	-602.1	-689.2	1,270.8	1,232.5	38.25	33.225	
7,000.0	6,894.9	6,986.9	6,901.6	22.6	21.3	-85.78	-603.1	-688.9	1,270.4	1,231.8	38.57	32.941	
7,061.7	6,956.5	7,043.8	6,958.5	22.7	21.4	-85.81	-603.7	-688.8	1,270.2	1,231.5	38.75	32.776	
7,100.0	6,994.9	7,079.0	6,993.7	22.8	21.4	-85.82	-604.0	-688.9	1,270.3	1,231.4	38.87	32.678	
7,200.0	7,094.9	7,181.6	7,096.3	22.9	21.6	-85.88	-605.2	-689.1	1,270.4	1,231.2	39.20	32.408	
7,300.0	7,194.9	7,283.8	7,198.5	23.0	21.7	-85.93	-606.3	-689.2	1,270.4	1,230.8	39.53	32.135	
7,400.0	7,294.9	7,383.1	7,297.9	23.2	21.9	-85.97	-607.4	-689.1	1,270.2	1,230.4	39.86	31.868	
7,500.0	7,394.9	7,484.4	7,399.1	23.3	22.0	-86.03	-608.5	-689.1	1,270.2	1,230.0	40.19	31.603	
7,600.0	7,494.9	7,588.8	7,503.5	23.4	22.2	-86.09	-609.9	-688.8	1,269.8	1,229.3	40.54	31.326	
7,692.2	7,587.1	7,674.4	7,589.1	23.6	22.3	-86.16	-611.5	-688.6	1,269.5	1,228.6	40.84	31.086	
7,700.0	7,594.9	7,681.3	7,596.0	23.6	22.4	-86.17	-611.6	-688.6	1,269.5	1,228.6	40.86	31.067	
7,804.1	7,699.0	7,782.4	7,697.1	23.7	22.5	-86.25	-613.4	-689.0	1,269.8	1,228.6	41.22	30.808	

Company:	Anadarko, Weld County CO	Local Co-ordinate Reference:	Well Pioneer 26-11
Project:	SEC.2-T2N-R65W	TVD Reference:	WELL @ 4863.0ft (Original Well Elev)
Reference Site:	Pioneer 26-11 Pad Sec.2-T2N-R65W	MD Reference:	WELL @ 4863.0ft (Original Well Elev)
Site Error:	0.0ft	North Reference:	True
Reference Well:	Pioneer 26-11	Survey Calculation Method:	Minimum Curvature
Well Error:	0.0ft	Output errors are at	2.00 sigma
Reference Wellbore	Wellbore #1	Database:	Landmark
Reference Design:	Plan #1 (3-1-11)	Offset TVD Reference:	Offset Datum

Offset Design												Offset Site Error:	0.0ft
Survey Program: 17-MWD												Offset Well Error:	0.0ft
Reference		Offset		Semi Major Axis			Distance						
Measured Depth (ft)	Vertical Depth (ft)	Measured Depth (ft)	Vertical Depth (ft)	Reference (ft)	Offset (ft)	Highside Toolface (°)	Offset Wellbore Centre +N/-S (ft)	+E/-W (ft)	Between Centres (ft)	Between Ellipses (ft)	Minimum Separation (ft)	Separation Factor	Warning
0.0	0.0	2.0	2.0	0.0	0.0	-55.14	36.8	-52.8	64.4	64.4	0.00	N/A	CC
100.0	100.0	101.7	101.6	0.1	0.2	-55.07	37.0	-53.0	64.6	64.3	0.32	200.641	
200.0	200.0	201.4	201.4	0.3	0.4	-54.62	37.8	-53.3	65.4	64.6	0.77	85.361	
300.0	300.0	302.0	302.0	0.6	0.6	-52.36	40.1	-52.0	65.7	64.5	1.21	54.447	
400.0	400.0	402.1	401.9	0.8	0.9	-46.99	44.9	-48.1	65.8	64.2	1.66	39.568	ES
500.0	500.0	501.9	501.2	1.0	1.1	-38.71	51.8	-41.5	66.4	64.2	2.13	31.116	
600.0	600.0	600.8	599.1	1.2	1.4	-27.24	61.3	-31.6	69.0	66.4	2.61	26.386	
700.0	700.0	698.3	695.0	1.5	1.8	-14.36	72.7	-18.6	75.4	72.3	3.09	24.404	SF
800.0	800.0	795.8	790.6	1.7	2.1	-2.75	85.9	-4.1	86.8	83.2	3.53	24.583	
900.0	900.0	893.4	886.2	1.9	2.5	5.40	99.5	9.4	101.1	97.2	3.96	25.547	
1,000.0	1,000.0	989.7	980.3	2.1	2.9	-128.30	113.4	24.9	119.2	114.6	4.60	25.885	
1,100.0	1,099.8	1,085.2	1,073.0	2.3	3.3	-123.43	127.6	42.9	141.4	136.4	5.06	27.968	
1,200.0	1,199.5	1,179.2	1,163.8	2.5	3.8	-120.47	142.6	61.8	167.4	161.9	5.53	30.245	
1,300.0	1,298.7	1,271.1	1,252.3	2.7	4.3	-119.02	158.7	80.8	196.9	190.8	6.04	32.575	
1,400.0	1,397.5	1,361.6	1,338.9	3.0	4.8	-118.43	176.2	100.4	230.0	223.4	6.59	34.893	
1,500.0	1,495.6	1,452.8	1,425.9	3.3	5.3	-118.37	194.6	120.8	265.8	258.6	7.19	36.990	
1,607.8	1,600.6	1,552.7	1,520.9	3.7	5.9	-118.84	215.5	143.2	306.8	298.9	7.87	38.978	
1,700.0	1,690.0	1,641.0	1,605.4	4.1	6.4	-120.18	233.7	161.8	342.1	333.6	8.52	40.171	
1,800.0	1,787.0	1,734.7	1,695.0	4.5	6.9	-121.27	252.0	181.5	379.7	370.5	9.23	41.151	
1,900.0	1,883.9	1,828.0	1,784.2	5.0	7.4	-121.98	270.0	202.4	417.4	407.4	9.96	41.889	
2,000.0	1,980.9	1,926.5	1,878.6	5.4	7.9	-122.65	288.4	223.9	454.4	443.7	10.72	42.392	
2,100.0	2,077.9	2,024.9	1,973.4	5.9	8.4	-123.38	305.8	243.8	490.2	478.7	11.47	42.729	
2,200.0	2,174.8	2,120.7	2,065.9	6.4	8.8	-124.11	322.3	262.0	525.4	513.2	12.22	42.991	
2,300.0	2,271.8	2,214.3	2,156.6	6.9	9.3	-124.86	338.6	278.6	560.4	547.4	12.96	43.237	
2,400.0	2,368.8	2,320.7	2,260.1	7.4	9.8	-125.75	356.4	296.0	594.6	580.9	13.74	43.286	
2,500.0	2,465.7	2,420.9	2,357.7	7.9	10.2	-126.34	371.0	313.5	627.1	612.6	14.50	43.242	
2,600.0	2,562.7	2,508.9	2,443.2	8.4	10.6	-126.77	384.0	329.3	659.9	644.6	15.24	43.299	
2,700.0	2,659.7	2,601.6	2,533.5	8.9	11.0	-127.28	398.4	344.9	693.2	677.2	15.99	43.356	
2,800.0	2,756.6	2,694.6	2,624.0	9.4	11.5	-127.78	413.0	360.2	726.8	710.1	16.74	43.427	
2,900.0	2,853.6	2,786.4	2,713.3	10.0	11.9	-128.20	427.6	375.7	760.6	743.1	17.48	43.505	
3,000.0	2,950.5	2,873.6	2,798.1	10.5	12.3	-128.60	441.9	390.1	794.9	776.7	18.21	43.647	
3,100.0	3,047.5	2,958.7	2,880.7	11.0	12.7	-128.93	456.9	404.7	830.3	811.4	18.94	43.845	
3,200.0	3,144.5	3,060.0	2,978.7	11.5	13.2	-129.21	474.0	423.1	865.4	845.7	19.73	43.870	
3,300.0	3,241.4	3,147.9	3,063.8	12.0	13.7	-129.40	489.1	439.6	900.8	880.3	20.48	43.991	
3,400.0	3,338.4	3,249.9	3,162.3	12.6	14.2	-129.56	506.2	459.3	935.9	914.7	21.28	43.987	
3,500.0	3,435.4	3,360.6	3,269.9	13.1	14.7	-129.84	523.8	478.7	970.0	947.9	22.08	43.921	
3,600.0	3,532.3	3,501.4	3,407.8	13.6	15.2	-130.33	541.9	500.0	1,000.8	977.9	22.95	43.603	
3,700.0	3,629.3	3,621.3	3,526.3	14.1	15.6	-130.93	553.8	514.0	1,028.4	1,004.7	23.71	43.366	
3,800.0	3,726.3	3,750.3	3,654.5	14.6	16.0	-131.76	564.0	524.7	1,053.8	1,029.4	24.45	43.104	
3,900.0	3,823.2	3,862.8	3,766.6	15.2	16.2	-132.55	570.2	531.6	1,076.7	1,051.6	25.11	42.877	
4,000.0	3,920.2	3,989.0	3,892.6	15.7	16.5	-133.63	575.3	534.8	1,097.9	1,072.2	25.74	42.650	
4,100.0	4,017.1	4,088.1	3,991.7	16.2	16.6	-134.51	577.6	535.7	1,117.6	1,091.3	26.30	42.487	
4,200.0	4,114.1	4,212.0	4,115.6	16.7	16.8	-135.51	579.2	538.1	1,136.7	1,109.8	26.90	42.249	
4,300.0	4,211.1	4,307.0	4,210.6	17.3	16.9	-136.26	579.3	539.5	1,154.7	1,127.2	27.45	42.062	
4,400.0	4,308.0	4,403.6	4,307.2	17.8	17.0	-137.02	579.5	540.5	1,172.9	1,144.9	27.99	41.904	
4,500.0	4,405.0	4,499.2	4,402.8	18.3	17.1	-137.77	579.7	541.2	1,191.5	1,163.0	28.52	41.779	
4,597.3	4,499.4	4,595.2	4,498.8	18.8	17.2	-138.52	580.0	541.5	1,209.8	1,180.7	29.03	41.679	
4,600.0	4,502.0	4,597.9	4,501.5	18.9	17.2	-138.54	580.0	541.5	1,210.3	1,181.2	29.04	41.673	
4,700.0	4,599.3	4,697.8	4,601.3	19.2	17.4	-139.46	580.1	542.1	1,227.6	1,198.0	29.58	41.506	
4,800.0	4,697.5	4,792.7	4,696.3	19.6	17.5	-140.18	580.2	542.6	1,242.5	1,212.5	30.07	41.327	
4,900.0	4,796.2	4,885.5	4,789.0	19.8	17.6	-140.79	580.6	542.3	1,255.3	1,224.8	30.50	41.151	
5,000.0	4,895.4	4,976.4	4,880.0	20.1	17.7	-141.28	581.5	541.6	1,265.9	1,235.0	30.90	40.974	

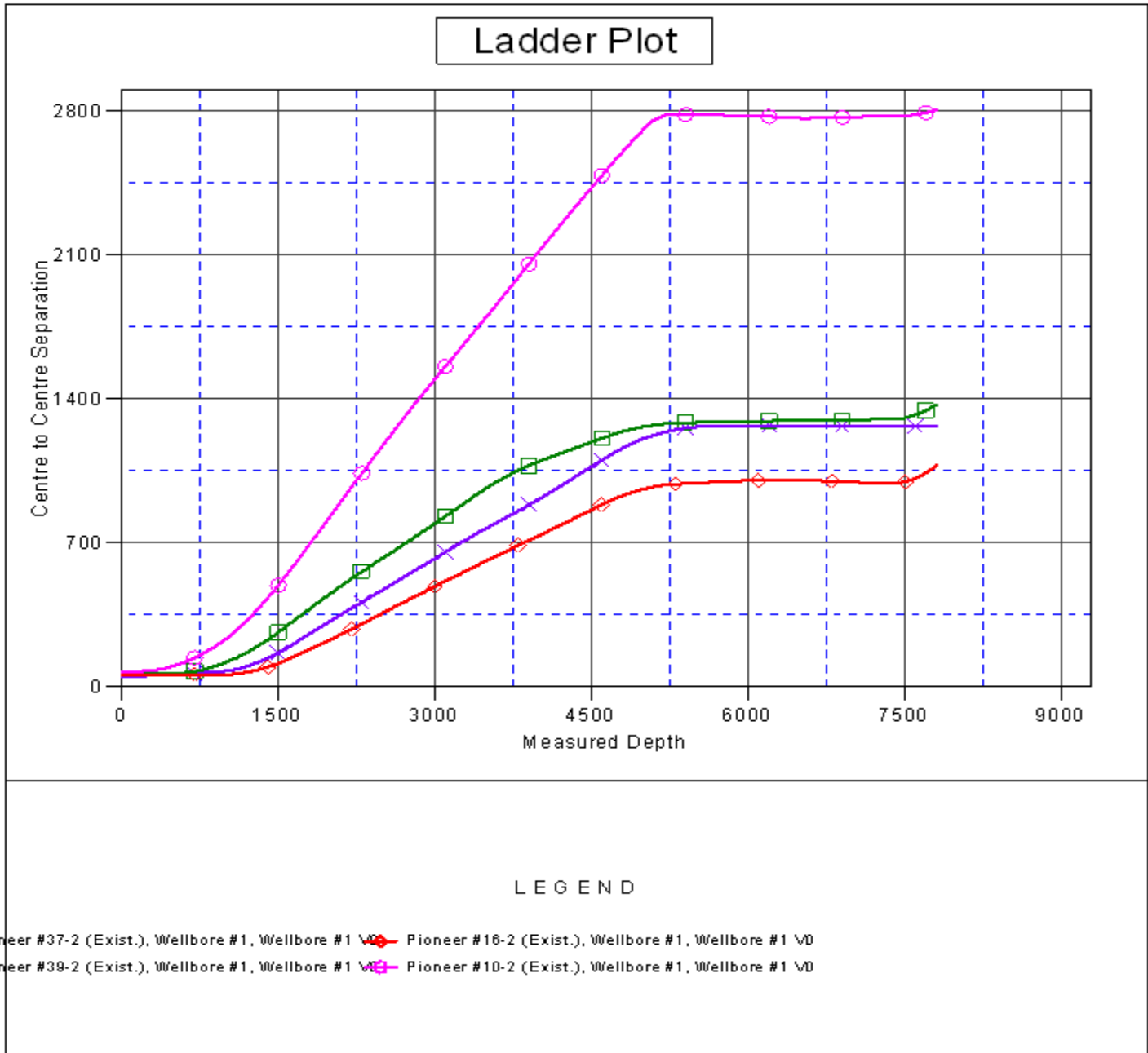
CC - Min centre to center distance or convergent point, SF - min separation factor, ES - min ellipse separation

Company:	Anadarko, Weld County CO	Local Co-ordinate Reference:	Well Pioneer 26-11
Project:	SEC.2-T2N-R65W	TVD Reference:	WELL @ 4863.0ft (Original Well Elev)
Reference Site:	Pioneer 26-11 Pad Sec.2-T2N-R65W	MD Reference:	WELL @ 4863.0ft (Original Well Elev)
Site Error:	0.0ft	North Reference:	True
Reference Well:	Pioneer 26-11	Survey Calculation Method:	Minimum Curvature
Well Error:	0.0ft	Output errors are at	2.00 sigma
Reference Wellbore	Wellbore #1	Database:	Landmark
Reference Design:	Plan #1 (3-1-11)	Offset TVD Reference:	Offset Datum

Offset Design Pioneer 26-11 Pad Sec.2-T2N-R65W - Pioneer #39-2 (Exist.) - Wellbore #1 - Wellbore #1												Offset Site Error:	0.0 ft
Survey Program: 17-MWD												Offset Well Error:	0.0 ft
Reference		Offset		Semi Major Axis			Distance						
Measured Depth (ft)	Vertical Depth (ft)	Measured Depth (ft)	Vertical Depth (ft)	Reference (ft)	Offset (ft)	Highside Toolface (°)	Offset Wellbore Centre +N/-S (ft)	+E/-W (ft)	Between Centres (ft)	Between Ellipses (ft)	Minimum Separation (ft)	Separation Factor	Warning
5,100.0	4,995.0	5,070.3	4,973.9	20.3	17.8	-141.63	583.1	541.4	1,274.6	1,243.3	31.25	40.783	
5,200.0	5,094.9	5,170.2	5,073.7	20.5	18.0	-141.88	584.9	540.9	1,280.7	1,249.1	31.58	40.558	
5,305.1	5,200.0	5,278.1	5,181.6	20.6	18.1	-1.70	586.7	539.9	1,284.0	1,252.1	31.88	40.279	
5,400.0	5,294.9	5,372.3	5,275.7	20.7	18.2	-1.74	588.2	538.9	1,285.5	1,253.4	32.13	40.004	
5,500.0	5,394.9	5,475.4	5,378.8	20.8	18.4	-1.80	589.7	537.6	1,287.0	1,254.6	32.41	39.711	
5,600.0	5,494.9	5,576.3	5,479.7	20.9	18.5	-1.86	591.1	536.1	1,288.4	1,255.7	32.68	39.422	
5,700.0	5,594.9	5,682.5	5,585.9	21.0	18.6	-1.94	592.2	534.4	1,289.5	1,256.6	32.96	39.120	
5,800.0	5,694.9	5,788.0	5,691.4	21.1	18.8	-1.99	592.8	533.2	1,290.1	1,256.9	33.25	38.803	
5,900.0	5,794.9	5,890.9	5,794.3	21.2	18.9	-2.04	593.1	532.1	1,290.4	1,256.9	33.53	38.480	
6,000.0	5,894.9	5,978.3	5,881.7	21.4	19.0	-2.08	593.5	531.2	1,291.0	1,257.2	33.80	38.189	
6,100.0	5,994.9	6,076.7	5,980.1	21.5	19.1	-2.13	594.9	530.0	1,292.4	1,258.3	34.09	37.907	
6,200.0	6,094.9	6,177.4	6,080.8	21.6	19.3	-2.18	596.1	528.9	1,293.6	1,259.3	34.39	37.619	
6,300.0	6,194.9	6,272.7	6,176.0	21.7	19.4	-2.22	597.4	527.9	1,295.1	1,260.4	34.68	37.344	
6,400.0	6,294.9	6,389.1	6,292.5	21.8	19.6	-2.23	598.4	527.5	1,295.9	1,260.9	35.01	37.010	
6,500.0	6,394.9	6,489.4	6,392.7	22.0	19.7	-2.21	598.7	528.0	1,296.2	1,260.9	35.33	36.685	
6,600.0	6,494.9	6,592.2	6,495.6	22.1	19.9	-2.18	599.0	528.6	1,296.5	1,260.8	35.66	36.355	
6,700.0	6,594.9	6,696.5	6,599.9	22.2	20.0	-2.17	598.9	528.9	1,296.4	1,260.4	35.99	36.019	
6,770.6	6,665.5	6,764.1	6,667.4	22.3	20.1	-2.17	598.8	529.0	1,296.3	1,260.0	36.21	35.794	
6,800.0	6,694.9	6,791.1	6,694.4	22.4	20.2	-2.17	598.8	528.9	1,296.3	1,260.0	36.31	35.705	
6,900.0	6,794.9	6,885.0	6,788.3	22.5	20.3	-2.20	599.2	528.4	1,296.7	1,260.1	36.61	35.415	
7,000.0	6,894.9	6,969.8	6,873.1	22.6	20.4	-2.21	600.2	528.0	1,297.9	1,261.0	36.91	35.161	
7,100.0	6,994.9	7,062.5	6,965.9	22.8	20.6	-2.22	602.2	527.7	1,300.1	1,262.9	37.23	34.919	
7,200.0	7,094.9	7,174.9	7,078.2	22.9	20.8	-2.21	604.5	527.9	1,302.1	1,264.5	37.59	34.642	
7,300.0	7,194.9	7,287.4	7,190.7	23.0	21.0	-2.22	605.4	527.6	1,302.9	1,265.0	37.94	34.343	
7,400.0	7,294.9	7,365.0	7,268.3	23.2	21.1	-2.23	605.8	527.4	1,303.6	1,265.3	38.23	34.095	
7,500.0	7,394.9	7,365.0	7,268.3	23.3	21.1	-2.23	605.8	527.4	1,309.6	1,271.2	38.40	34.101	
7,600.0	7,494.9	7,365.0	7,268.3	23.4	21.1	-2.23	605.8	527.4	1,323.2	1,284.6	38.57	34.301	
7,700.0	7,594.9	7,365.0	7,268.3	23.6	21.1	-2.23	605.8	527.4	1,344.0	1,305.3	38.75	34.688	
7,804.1	7,699.0	7,365.0	7,268.3	23.7	21.1	-2.23	605.8	527.4	1,373.2	1,334.3	38.93	35.277	

Company:	Anadarko, Weld County CO	Local Co-ordinate Reference:	Well Pioneer 26-11
Project:	SEC.2-T2N-R65W	TVD Reference:	WELL @ 4863.0ft (Original Well Elev)
Reference Site:	Pioneer 26-11 Pad Sec.2-T2N-R65W	MD Reference:	WELL @ 4863.0ft (Original Well Elev)
Site Error:	0.0ft	North Reference:	True
Reference Well:	Pioneer 26-11	Survey Calculation Method:	Minimum Curvature
Well Error:	0.0ft	Output errors are at	2.00 sigma
Reference Wellbore	Wellbore #1	Database:	Landmark
Reference Design:	Plan #1 (3-1-11)	Offset TVD Reference:	Offset Datum

Reference Depths are relative to WELL @ 4863.0ft (Original Well Elev) Coordinates are relative to: Pioneer 26-11
 Offset Depths are relative to Offset Datum
 Central Meridian is 105° 30' 0.000 W °
 Coordinate System is US State Plane 1983, Colorado Northern Zone
 Grid Convergence at Surface is: 0.57°



Company:	Anadarko, Weld County CO	Local Co-ordinate Reference:	Well Pioneer 26-11
Project:	SEC.2-T2N-R65W	TVD Reference:	WELL @ 4863.0ft (Original Well Elev)
Reference Site:	Pioneer 26-11 Pad Sec.2-T2N-R65W	MD Reference:	WELL @ 4863.0ft (Original Well Elev)
Site Error:	0.0ft	North Reference:	True
Reference Well:	Pioneer 26-11	Survey Calculation Method:	Minimum Curvature
Well Error:	0.0ft	Output errors are at	2.00 sigma
Reference Wellbore	Wellbore #1	Database:	Landmark
Reference Design:	Plan #1 (3-1-11)	Offset TVD Reference:	Offset Datum

Reference Depths are relative to WELL @ 4863.0ft (Original Well Elev) Coordinates are relative to: Pioneer 26-11
Offset Depths are relative to Offset Datum Coordinate System is US State Plane 1983, Colorado Northern Zone
Central Meridian is 105° 30' 0.000 W ° Grid Convergence at Surface is: 0.57°

