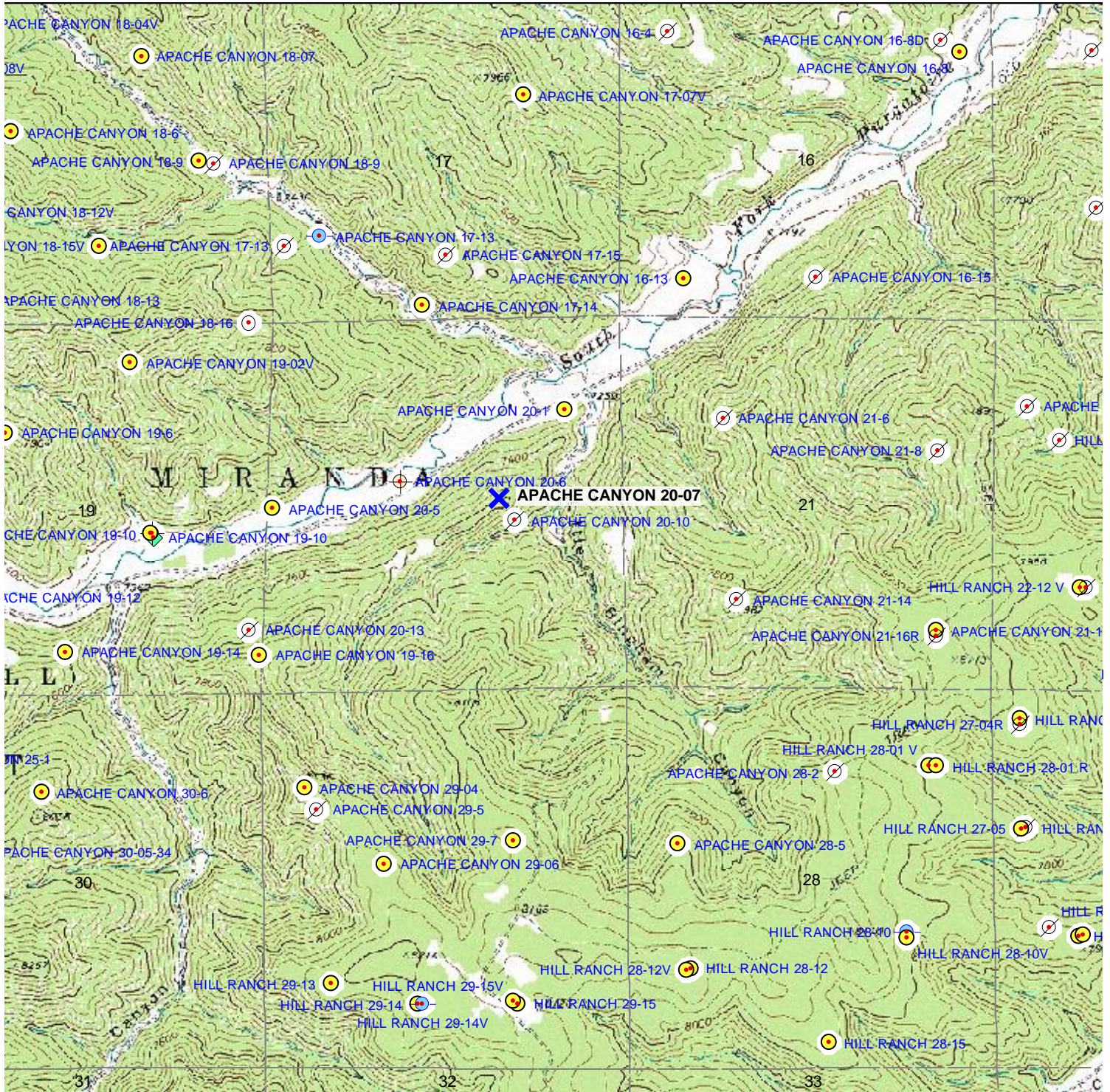


# TOPOGRAPHIC MAP



- X Proposed Well
- Producing
- ⊗ Plugged & Abandoned
- ⊗ Abandoned Location
- ⊗ Shut-In
- ◆ Pending Permits
- Permits

**APACHE CANYON 20-07**  
 2,471' FNL & 1,967' FWL  
 SEC. 20, T34S, R67W, 6<sup>th</sup> P.M.  
 LAS ANIMAS COUNTY, CO



**Scale 1" = 2,000'**