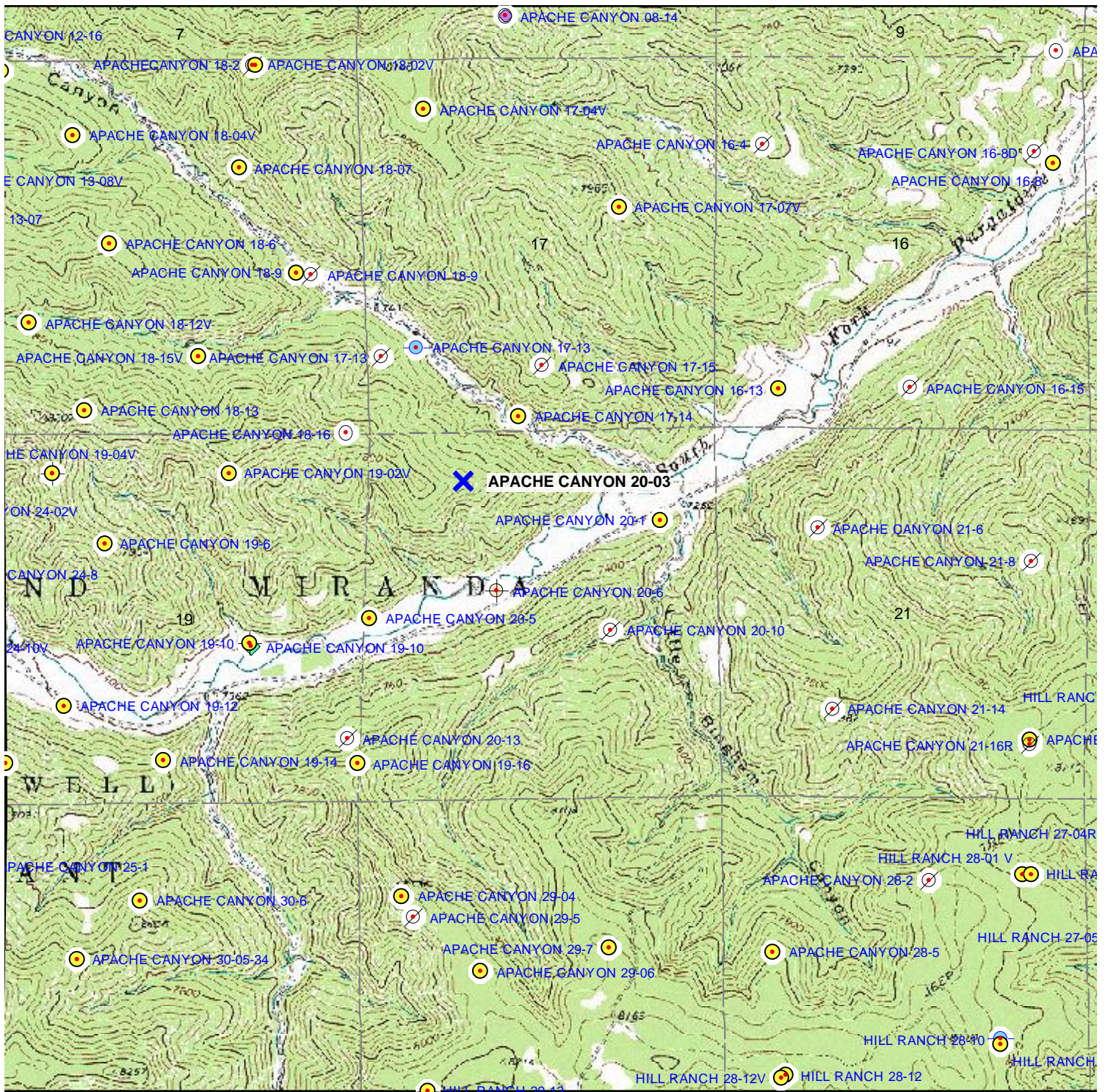









TOPOGRAPHIC MAP



-  Proposed Well
-  Producing
-  Plugged & Abandoned
-  Abandoned Location
-  Shut-In
-  Pending Permits
-  Permits

APACHE CANYON 20-03
668' FNL & 1,435' FWL
SEC. 20, T34S, R67W, 6th P.M.
LAS ANIMAS COUNTY, CO



Scale 1" = 2,000'