

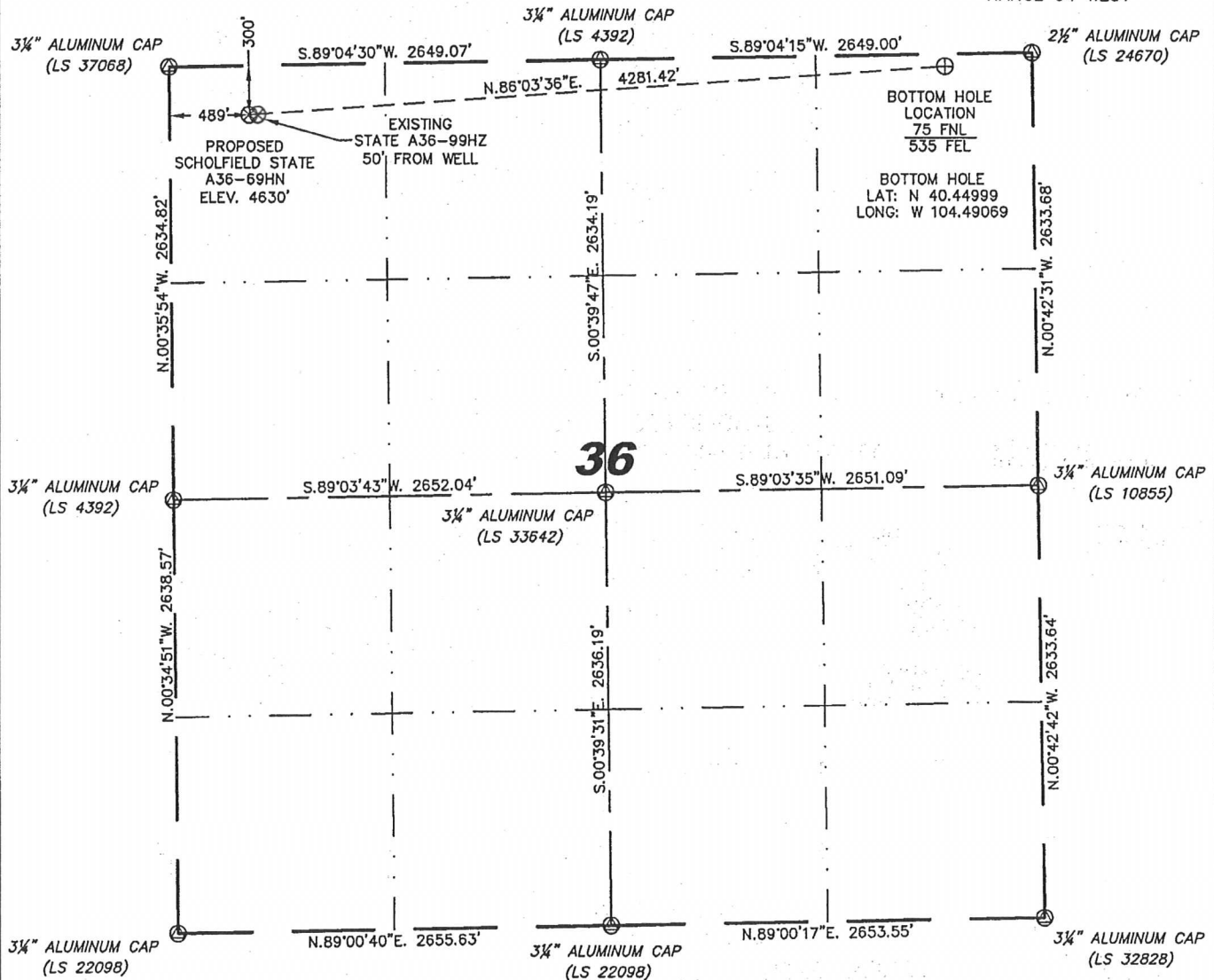
Stell Surveying Services, LLC

1102 West 19th Street P.O. BOX 2073

Cheyenne, Wyoming 82001

WELL LOCATION CERTIFICATE
THIS MAP DOES NOT REPRESENT A BOUNDARY SURVEY

SECTION 36
TOWNSHIP 6 NORTH
RANGE 64 WEST



IN ACCORDANCE WITH A REQUEST FROM ERIK VAN DECAR - NOBLE ENERGY INC, STELL SURVEYING SERVICES, LLC HAS DETERMINED THE LOCATION OF THE SCHOLFIELD STATE A36-69HN WELL TO BE 300' FNL, 489' FWL, AS MEASURED AT NINETY (90) DEGREES FROM THE SECTION LINES, SECTION 36, TOWNSHIP 6 NORTH, RANGE 64 WEST, 6TH PRINCIPLE MERIDIAN, WELD COUNTY, COLORADO.

I HEREBY CERTIFY THAT THIS WELL LOCATION CERTIFICATE WAS PREPARED BY ME, OR UNDER MY DIRECT SUPERVISION, THAT THE FIELD WORK WAS COMPLETED ON 01/24/2011, FOR AND ON BEHALF OF NOBLE ENERGY INC, THAT IT IS NOT A LAND SURVEY PLAT OR AN IMPROVEMENT SURVEY PLAT, AND THAT IT IS NOT TO BE RELIED UPON FOR ESTABLISHMENT OF FENCE, BUILDING, OR OTHER FUTURE IMPROVEMENT LINES.

NOTES:

- 1) BASIS OF BEARINGS FOR THIS MAP ARE BASED UPON GPS OBSERVATIONS MADE ON 07/21/2010 BETWEEN MONUMENTS LOCATED AT THE SOUTHEAST SECTION CORNER AND THE NORTHEAST SECTION CORNER OF SAID SECTION AND WITH ALL BEARINGS SHOWN HEREON RELATIVE THERETO.
- 2) COORDINATES SHOWN ARE COLORADO STATE PLANE (NORTH ZONE) NAD 83
- 3) ELEVATIONS ARE BASED UPON NGS OPUS SOLUTION NAVD 88 DATUM.
- 4) THE NEAREST EXISTING WELL IS: STATE A36-99HZ, 50' EAST.
- 5) SEE LOCATION DRAWING FOR ALL IMPROVEMENTS WITHIN VISIBLE IMPROVEMENT LIMIT.
- 6) THE LOCATION FALLS IN PASTURE LAND.

LATITUDE & LONGITUDE (NAD 83 SURFACE HOLE):
LATITUDE: N 40.44932°
LONGITUDE: W 104.50605°
PDOP: 2.6
QUARTER-QUARTER: NW/4NW/4
NEAREST PROPERTY LINE: 300' TO THE NORTH

NOTICE: According to Colorado law you MUST commence any legal action based upon any defect in this W.L.C. within three years after you first discover such defect. In no event may any action based upon any defect in this W.L.C. be commenced more than ten years from this said date of the certification shown hereon.

LEGEND

- (A) FOUND SURVEY MONUMENT PER MONUMENT RECORD - EXCEPTIONS NOTED.
- (C) CALCULATED DIMENSION



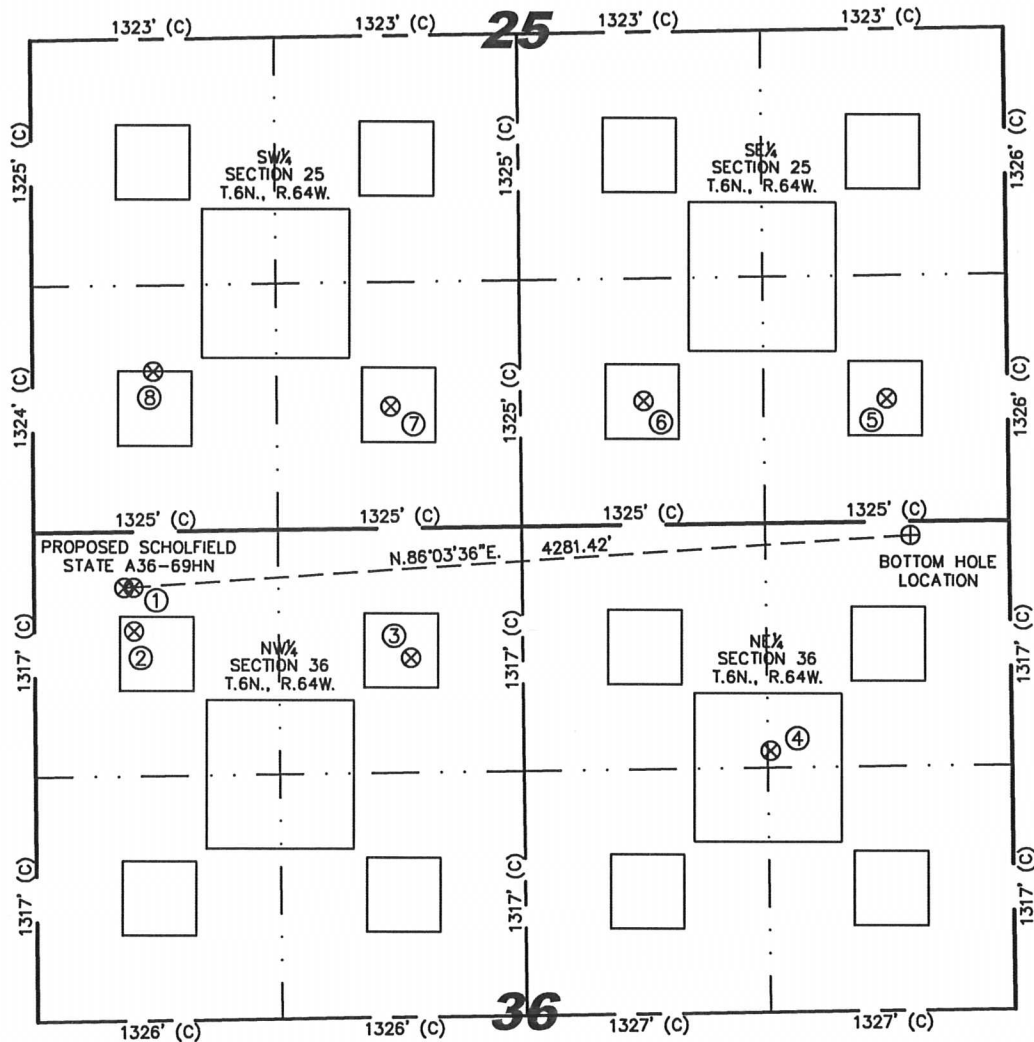
David C. Holmes
Professional Land Surveyor Registration No. 32828
State of Colorado

JOB #: 10086

Completed 01/27/2011

SITE SKETCH – SCHOLFIELD STATE A36-69HN

SECTIONS 36
TOWNSHIP 6 NORTH
RANGE 64 WEST



①
STATE A36-99HZ
NW/NW SEC. 36
300' FNL
539' FWL
EL 4629'
N 40.44932
W 104.50586
PDOP 1.9

②
SCHOLFIELD STATE
A36-04X
NW/NW SEC. 36
534' FNL
540' FWL
EL 4629'
N 40.44868
W 104.50586
PDOP 3.8

③
STATE A36-3
NE/NW SEC. 36
698' FNL
2042' FWL
EL 4631'
N 40.44825
W 104.50047
PDOP 1.9

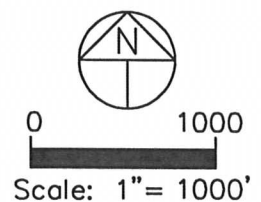
④
DEVRIES STATE
A36-17
NE/NE SEC. 36
1227' FNL
1309' FEL
EL 4633'
N 40.44682
W 104.49346
PDOP 2.0

⑤
FAIRMEADOWS
3-25G
SE/SE SEC. 25
662' FSL
655' FEL
EL 4636'
N 40.45202
W 104.49112
PDOP 1.6

⑥
LARSON A25-15
SW/SE SEC. 25
667' FSL
1977' FEL
EL 4633'
N 40.45201
W 104.49587
PDOP 1.5

⑦
LARSON A25-14
SE/SW SEC. 25
656' FSL
1942' FWL
EL 4632'
N 40.45196
W 104.50082
PDOP 1.6

⑧
LARSON A25-13
SW/SW SEC. 25
862' FSL
656' FWL
EL 4629'
N 40.45251
W 104.50544
PDOP 1.6



NOTES:

- 1) THIS SKETCH DOES NOT REPRESENT A BOUNDARY SURVEY.
- 2) THE DATUM FOR THE LATITUDES AND LONGITUDES ON THIS SKETCH IS NAD83.