

---

# **NOBLE ENERGY INC E-BUSINESS**

---

**SGV FEDERAL 8-11C  
PARACHUTE  
Garfield County , Colorado**

**Cement Surface Casing**  
**06-Sep-2010**

**Post Job Summary**

## The Road to Excellence Starts with Safety

<b>Sold To #:</b> 345242		<b>Ship To #:</b> 2804064		<b>Quote #:</b>		<b>Sales Order #:</b> 7610509	
<b>Customer:</b> NOBLE ENERGY INC E-BUSINESS				<b>Customer Rep:</b> COLLVER, CHARLES			
<b>Well Name:</b> SGV FEDERAL			<b>Well #:</b> 8-11C		<b>API/UWI #:</b> 05-045-19132		
<b>Field:</b> PARACHUTE		<b>City (SAP):</b> HOUSTON		<b>County/Parish:</b> Garfield		<b>State:</b> Colorado	
<b>Lat:</b> N 39.382 deg. OR N 39 deg. 22 min. 54.278 secs.				<b>Long:</b> W 108.026 deg. OR W -109 deg. 58 min. 25.943 secs.			
<b>Contractor:</b> H&P 322			<b>Rig/Platform Name/Num:</b> H&P 322				
<b>Job Purpose:</b> Cement Surface Casing							
<b>Well Type:</b> Development Well				<b>Job Type:</b> Cement Surface Casing			
<b>Sales Person:</b> METLI, MARSHALL			<b>Srv Supervisor:</b> MAIN, CHAD			<b>MBU ID Emp #:</b> 335770	
<b>Job Personnel</b>							
<b>HES Emp Name</b>	<b>Exp Hrs</b>	<b>Emp #</b>	<b>HES Emp Name</b>	<b>Exp Hrs</b>	<b>Emp #</b>	<b>HES Emp Name</b>	<b>Exp Hrs</b>
BROWN, TRAVIS A	4.0	396848	COSTELDIA, BROCK James	4.0	476115	LOPEZ, GEROLD	4.0
MAIN, CHAD R	4.0	335770					
<b>Equipment</b>							
<b>HES Unit #</b>	<b>Distance-1 way</b>	<b>HES Unit #</b>	<b>Distance-1 way</b>	<b>HES Unit #</b>	<b>Distance-1 way</b>	<b>HES Unit #</b>	<b>Distance-1 way</b>
10551730C	60 mile	10804487	60 mile	10867531	60 mile	10951244	60 mile
10989685	60 mile						
<b>Job Hours</b>							
<b>Date</b>	<b>On Location Hours</b>	<b>Operating Hours</b>	<b>Date</b>	<b>On Location Hours</b>	<b>Operating Hours</b>	<b>Date</b>	<b>On Location Hours</b>
09/06/2010	4.0	4.0					
<b>TOTAL</b>		<i>Total is the sum of each column separately</i>					
<b>Job</b>				<b>Job Times</b>			
<b>Formation Name</b>				<b>Date</b>		<b>Time</b>	<b>Time Zone</b>
<b>Formation Depth (MD)</b>	<b>Top</b>	<b>Bottom</b>		<b>Called Out</b>	06 - Sep - 2010	07:00	MST
<b>Form Type</b>	BHST			<b>On Location</b>	06 - Sep - 2010	13:30	MST
<b>Job depth MD</b>	1519. ft	<b>Job Depth TVD</b>	1519. ft	<b>Job Started</b>	06 - Sep - 2010	15:00	MST
<b>Water Depth</b>		<b>Wk Ht Above Floor</b>	. ft	<b>Job Completed</b>	06 - Sep - 2010	15:58	MST
<b>Perforation Depth (MD)</b>	<b>From</b>	<b>To</b>		<b>Departed Loc</b>	06 - Sep - 2010	17:30	MST
<b>Well Data</b>							
<b>Description</b>	<b>New / Used</b>	<b>Max pressure psig</b>	<b>Size in</b>	<b>ID in</b>	<b>Weight lbm/ft</b>	<b>Thread</b>	<b>Grade</b>
							<b>Top MD ft</b>
							<b>Bottom MD ft</b>
							<b>Top TVD ft</b>
							<b>Bottom TVD ft</b>
<b>Sales/Rental/3<sup>rd</sup> Party (HES)</b>							
<b>Description</b>				<b>Qty</b>	<b>Qty uom</b>	<b>Depth</b>	<b>Supplier</b>
PLUG,CMTG,TOP,8 5/8,HWE,7.20 MIN/8.09 MA				1	EA		
R/A DENSOMETER W/CHART RECORDER,/JOB,ZI				1	JOB		
PORT. DAS W/CEMWIN;ACQUIRE W/HES, ZI				1	JOB		
ADC (AUTO DENSITY CTRL) SYS, /JOB,ZI				1	JOB		
<b>Tools and Accessories</b>							
<b>Type</b>	<b>Size</b>	<b>Qty</b>	<b>Make</b>	<b>Depth</b>	<b>Type</b>	<b>Size</b>	<b>Qty</b>
Guide Shoe					Packer		
Float Shoe					Bridge Plug		
Float Collar					Retainer		
Insert Float							
Stage Tool							
<b>Miscellaneous Materials</b>							
<b>Gelling Agt</b>		<b>Conc</b>		<b>Surfactant</b>		<b>Conc</b>	
<b>Treatment Fld</b>		<b>Conc</b>		<b>Inhibitor</b>		<b>Conc</b>	
						<b>Acid Type</b>	
						<b>Sand Type</b>	
						<b>Qty</b>	
						<b>Conc</b>	<b>%</b>
						<b>Size</b>	<b>Qty</b>

Fluid Data									
Stage/Plug #: 1									
Fluid #	Stage Type	Fluid Name	Qty	Qty uom	Mixing Density lbm/gal	Yield ft <sup>3</sup> /sk	Mix Fluid Gal/sk	Rate bbl/min	Total Mix Fluid Gal/sk
1	WATER SPACER		20.00	bbl	8.33	.0	.0	.0	
2	Lead Cement	VERSACEM (TM) SYSTEM (452010)	208.0	sacks	12.3	2.38	13.75		13.75
	13.75 Gal	FRESH WATER							
3	Tail Cement	VERSACEM (TM) SYSTEM (452010)	127.0	sacks	12.8	2.11	11.75		11.75
	11.75 Gal	FRESH WATER							
4	DISPLACEMENT		94.00	bbl	8.33	.0	.0	.0	
Calculated Values		Pressures		Volumes					
Displacement	93.9	Shut In: Instant		Lost Returns	0	Cement Slurry	135.8	Pad	
Top Of Cement	SURFACE	5 Min		Cement Returns	5	Actual Displacement	93.9	Treatment	
Frac Gradient		15 Min		Spacers	20	Load and Breakdown		Total Job	
Rates									
Circulating	2	Mixing	6	Displacement	8	Avg. Job	6		
Cement Left In Pipe	Amount	42.33 ft	Reason	Shoe Joint					
Frac Ring # 1 @	ID	Frac ring # 2 @	ID	Frac Ring # 3 @	ID	Frac Ring # 4 @	ID		
The Information Stated Herein Is Correct				Customer Representative Signature					

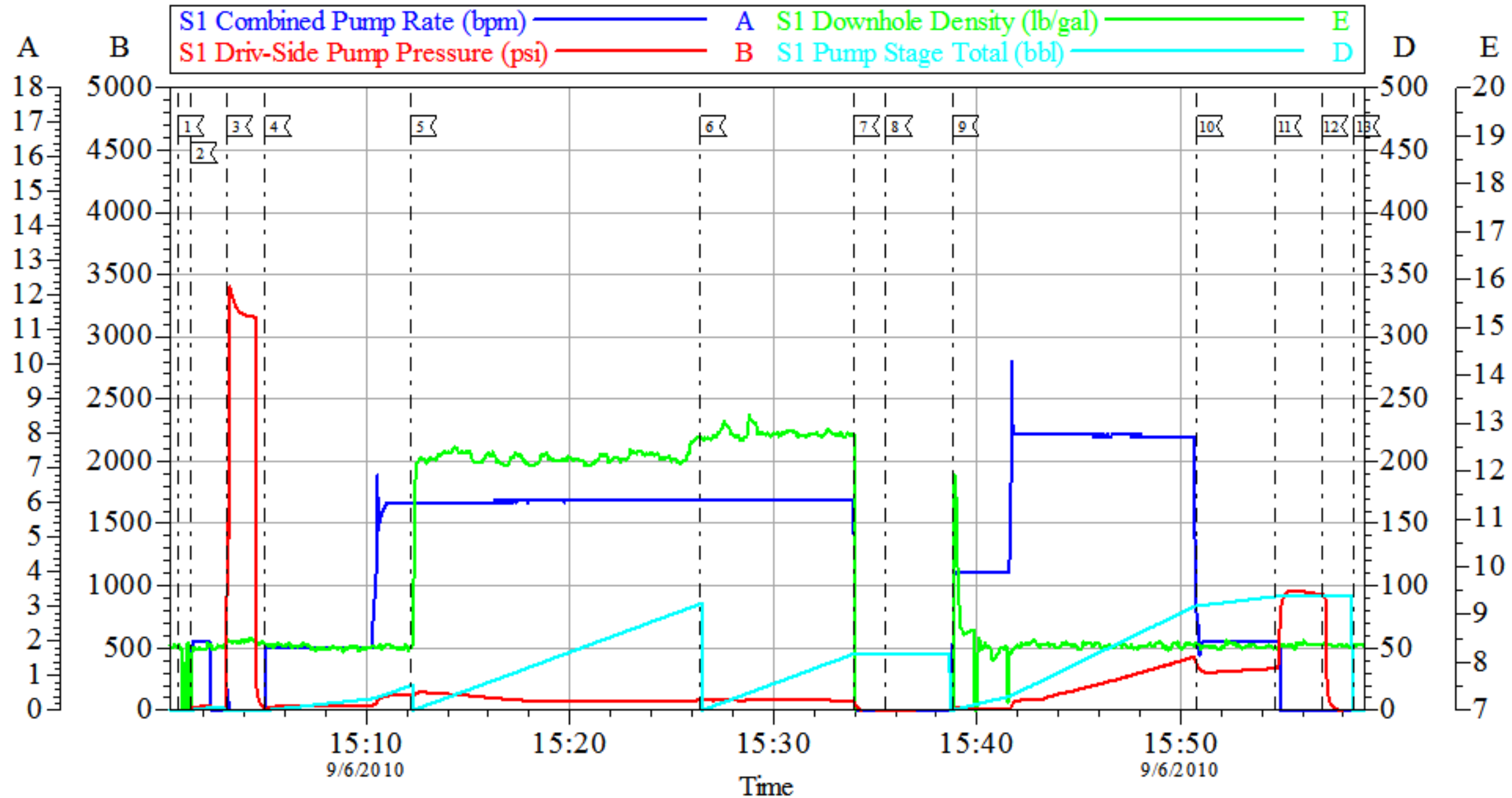
*The Road to Excellence Starts with Safety*

<b>Sold To #:</b> 345242		<b>Ship To #:</b> 2804064		<b>Quote #:</b>		<b>Sales Order #:</b> 7610509	
<b>Customer:</b> NOBLE ENERGY INC E-BUSINESS				<b>Customer Rep:</b> COLLVER, CHARLES			
<b>Well Name:</b> SGV FEDERAL			<b>Well #:</b> 8-11C			<b>API/UWI #:</b> 05-045-19132	
<b>Field:</b> PARACHUTE		<b>City (SAP):</b> HOUSTON		<b>County/Parish:</b> Garfield		<b>State:</b> Colorado	
<b>Legal Description:</b>							
<b>Lat:</b> N 39.382 deg. OR N 39 deg. 22 min. 54.278 secs.				<b>Long:</b> W 108.026 deg. OR W -109 deg. 58 min. 25.943 secs.			
<b>Contractor:</b> H&P 322			<b>Rig/Platform Name/Num:</b> H&P 322				
<b>Job Purpose:</b> Cement Surface Casing						<b>Ticket Amount:</b>	
<b>Well Type:</b> Development Well			<b>Job Type:</b> Cement Surface Casing				
<b>Sales Person:</b> METLI, MARSHALL			<b>Srvc Supervisor:</b> MAIN, CHAD			<b>MBU ID Emp #:</b> 335770	

Activity Description	Date/Time	Cht #	Rate bbl/min	Volume bbl		Pressure psig		Comments
				Stage	Total	Tubing	Casing	
Depart Yard Safety Meeting	09/06/2010 10:00							ALL HES PERSONNEL
Depart from Service Center or Other Site	09/06/2010 10:20							ONE ELITE, ONE BULK TRUCKS, ONE PICK UP
Arrive At Loc	09/06/2010 13:30							RIG WAS RUNNING CASING WHEN HES ARRIVED
Assessment Of Location Safety Meeting	09/06/2010 13:35							LOCATION CLEAN
Pre-Rig Up Safety Meeting	09/06/2010 13:40							ALL HES PERSONNEL
Rig-Up Equipment	09/06/2010 13:45							NO ADD HRS, QUICK LATCH, PLUG CONAINER , OR DERRICK CHARGES OFF LINE CEMENT JOB PUMPING THROUGH A 8 5/8" SWAGE
Rig-Up Completed	09/06/2010 14:45							
Pre-Job Safety Meeting	09/06/2010 14:50							ALL LOCATION PERSONNEL
Start Job	09/06/2010 15:00							TD 1552' CSG 1519' SJ 42.33" MUD 9.4 PPG OFF LINE CEMENT JOB USING 8 5/8" SWAGE
Pressure Test	09/06/2010 15:03						2500.0	
Pump Spacer 1	09/06/2010 15:05		2	20			28.0	H2O HES HAD FULL CIRCULATION ENTIRE JOB

Activity Description	Date/Time	Cht #	Rate bbl/ min	Volume bbl		Pressure psig		Comments
				Stage	Total	Tubing	Casing	
Pump Lead Cement	09/06/2010 15:12		6	88.1			123.0	208 SKS AT 12.3 PPG 2.37 FT3/SK 13.76 GAL/SK
Pump Tail Cement	09/06/2010 15:26		6	47.7			81.0	127 SKS AT 12.8 PPG 2.11 FT3/SK 11.75 GAL/SK
Shutdown	09/06/2010 15:33							
Drop Top Plug	09/06/2010 15:35							HES HAD TO TAKE OFF SWAGE TO DROP PLUG
Pump Displacement	09/06/2010 15:38		8	42				H2O
Bump Plug	09/06/2010 15:54		2	310				
Check Floats	09/06/2010 15:56			958				FLOATS HELD
End Job	09/06/2010 15:58							TOP OF TAIL 906' HES RETURNED 5 BBLS OF CEMENT TO SURFACE
Pre-Rig Down Safety Meeting	09/06/2010 16:05							ALL HES PERSONNEL
Rig-Down Equipment	09/06/2010 16:10							
Rig-Down Completed	09/06/2010 17:00							
Depart Location Safety Meeting	09/06/2010 17:10							ALL HES PERSONNEL
Depart Location for Service Center or Other Site	09/06/2010 17:30							LOCATION WAS LEFT AS CLEAN AS IT WAS WHEN HES ARRIVED
Other	09/06/2010 17:31							THANK YOU FOR USING HALLIBURTON GRAND JUNCTION CHAD MAIN AND CREW

# NOBLE SURFACE



Local Event Log			
1 START JOB	15:00:44	2 HLL PUMPS AND LINES	15:01:22
3 PRESSURE TEST	15:03:08	4 PUMP FRESH WATER	15:05:00
5 PUMP LEAD CEMENT	15:12:11	6 PUMP TAIL CEMENT	15:26:24
7 SHUTDOWN	15:33:56	8 DROP PLUG	15:35:32
9 START DISPLACEMENT	15:38:49	10 SLOWED RATE	15:50:48
11 BUMP PLUG	15:54:39	12 CHECK FLOATS	15:56:56
13 END JOB	15:58:31		

Customer: NOBLE  
Well Description: FEDERAL 8-11C  
Company Rep: CHARLES COLLVER

Job Date: 06-Sep-2010  
Job Type: SURFACE  
Cement Supervisor: CHAD MAIN

Sales Order #: 7610509  
ADC Used: YES  
Elite #: 2/ TRAVIS BROWN

OptiCem v6.4.2  
06-Sep-10 16:09