
NOBLE ENERGY INC E-BUSINESS

**FEDERAL 8-11B
PARACHUTE
Garfield County , Colorado**

Cement Surface Casing
07-Sep-2010

Post Job Summary

The Road to Excellence Starts with Safety

Sold To #: 345242		Ship To #: 2804058		Quote #:		Sales Order #: 7610507	
Customer: NOBLE ENERGY INC E-BUSINESS				Customer Rep: COLLVER, CHARLES			
Well Name: FEDERAL			Well #: 8-11B		API/UWI #: 05-045-19129		
Field: PARACHUTE		City (SAP): PARACHUTE		County/Parish: Garfield		State: Colorado	
Lat: N 39.382 deg. OR N 39 deg. 22 min. 54.25 secs.				Long: W 108.026 deg. OR W -109 deg. 58 min. 25.856 secs.			
Contractor: H&P 322			Rig/Platform Name/Num: H&P 322				
Job Purpose: Cement Surface Casing							
Well Type: Development Well				Job Type: Cement Surface Casing			
Sales Person: METLI, MARSHALL			Srv Supervisor: MAIN, CHAD			MBU ID Emp #: 335770	
Job Personnel							
HES Emp Name	Exp Hrs	Emp #	HES Emp Name	Exp Hrs	Emp #	HES Emp Name	Exp Hrs
BROWN, TRAVIS A		396848	COSTELDIA, BROCK James		476115	LOPEZ, GERALD Wayne	479828
MAIN, CHAD R		335770	SIMINEO, JEROD M		479954		
Equipment							
HES Unit #	Distance-1 way	HES Unit #	Distance-1 way	HES Unit #	Distance-1 way	HES Unit #	Distance-1 way
10551730C	60 mile	10784053	60 mile	10804487	60 mile	10951244	60 mile
Job Hours							
Date	On Location Hours	Operating Hours	Date	On Location Hours	Operating Hours	Date	On Location Hours
TOTAL			<i>Total is the sum of each column separately</i>				
Job				Job Times			
Formation Name					Date	Time	Time Zone
Formation Depth (MD)	Top		Bottom		Called Out	07 - Sep - 2010	15:00
Form Type	BHST				On Location	07 - Sep - 2010	17:30
Job depth MD	1531. ft			Job Depth TVD	1531. ft	Job Started	07 - Sep - 2010
Water Depth				Wk Ht Above Floor	. ft	Job Completed	07 - Sep - 2010
Perforation Depth (MD)	From		To		Departed Loc	07 - Sep - 2010	21:50
Well Data							
Description	New / Used	Max pressure psig	Size in	ID in	Weight lbm/ft	Thread	Grade
							Top MD ft
							Bottom MD ft
							Top TVD ft
							Bottom TVD ft
Sales/Rental/3rd Party (HES)							
Description					Qty	Qty uom	Depth
PLUG,CMTG,TOP,8 5/8,HWE,7.20 MIN/8.09 MA					1	EA	
R/A DENSOMETER W/CHART RECORDER,/JOB,ZI					1	JOB	
PORT. DAS W/CEMWIN;ACQUIRE W/HES, ZI					1	JOB	
ADC (AUTO DENSITY CTRL) SYS, /JOB,ZI					1	JOB	
Tools and Accessories							
Type	Size	Qty	Make	Depth	Type	Size	Qty
Guide Shoe					Packer		
Float Shoe					Bridge Plug		
Float Collar					Retainer		
Insert Float							
Stage Tool							
Miscellaneous Materials							
Gelling Agt		Conc		Surfactant		Conc	
Treatment Fld		Conc		Inhibitor		Conc	
						Acid Type	
						Sand Type	
						Qty	
						Conc	%
						Size	
						Qty	

Fluid Data										
Stage/Plug #: 1										
Fluid #	Stage Type	Fluid Name	Qty	Qty uom	Mixing Density lbm/gal	Yield ft ³ /sk	Mix Fluid Gal/sk	Rate bbl/min	Total Mix Fluid Gal/sk	
1	WATER SPACER		20.00	bbl	8.33	.0	.0	.0		
2	Lead Cement	VERSACEM (TM) SYSTEM (452010)	208.0	sacks	12.3	2.38	13.75		13.75	
	13.75 Gal	FRESH WATER								
3	Tail Cement	VERSACEM (TM) SYSTEM (452010)	127.0	sacks	12.8	2.11	11.75		11.75	
	11.75 Gal	FRESH WATER								
4	DISPLACEMENT		95.00	bbl	8.33	.0	.0	.0		
Calculated Values		Pressures		Volumes						
Displacement		Shut In: Instant		Lost Returns		Cement Slurry		Pad		
Top Of Cement		5 Min		Cement Returns		Actual Displacement		Treatment		
Frac Gradient		15 Min		Spacers		Load and Breakdown		Total Job		
Rates										
Circulating		Mixing		Displacement		Avg. Job				
Cement Left In Pipe	Amount	0 ft	Reason	Shoe Joint						
Frac Ring # 1 @	ID		Frac ring # 2 @	ID		Frac Ring # 3 @	ID		Frac Ring # 4 @	ID
The Information Stated Herein Is Correct				Customer Representative Signature						

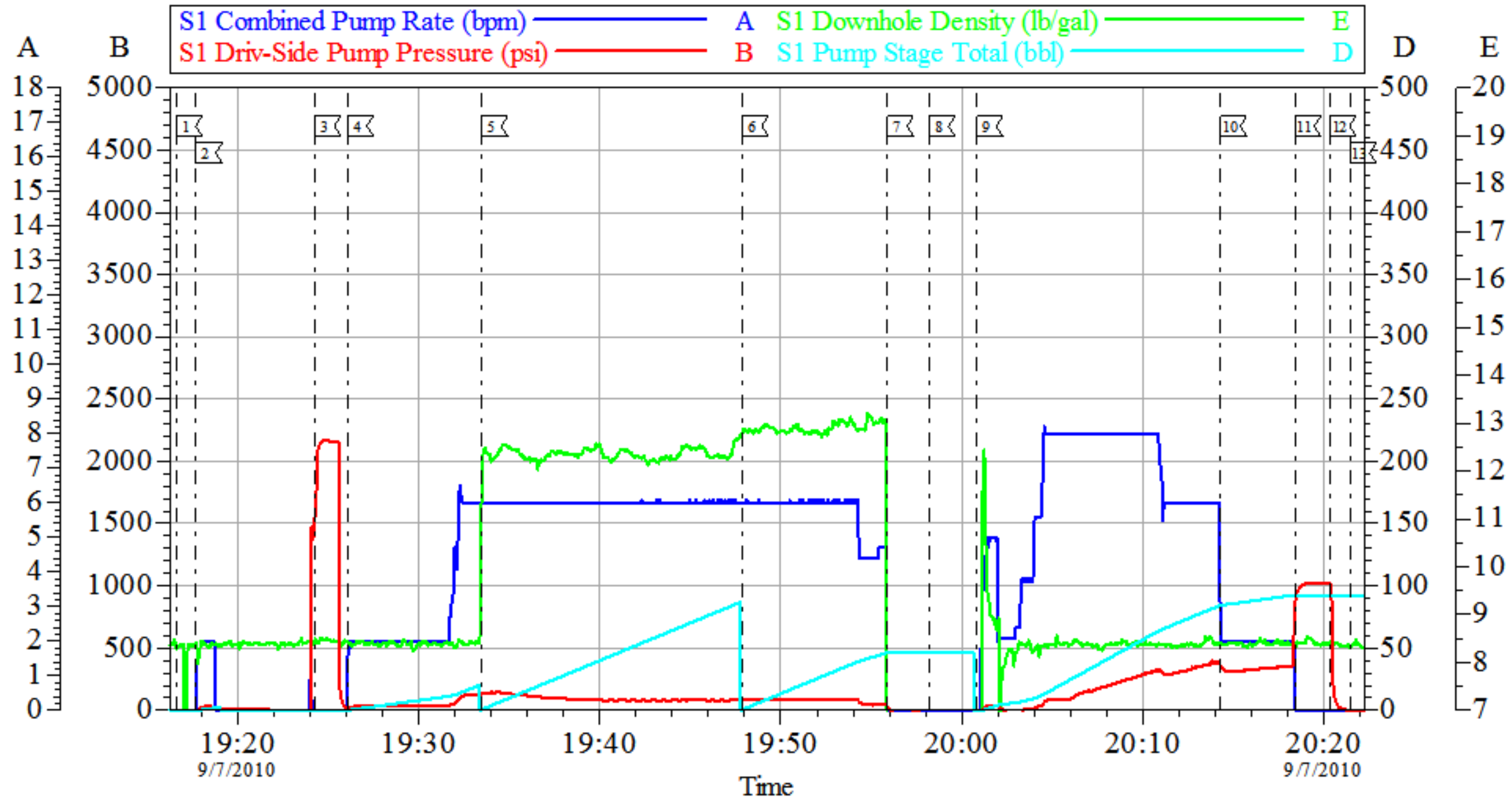
The Road to Excellence Starts with Safety

Sold To #: 345242		Ship To #: 2804058		Quote #:		Sales Order #: 7610507	
Customer: NOBLE ENERGY INC E-BUSINESS				Customer Rep: COLLVER, CHARLES			
Well Name: FEDERAL			Well #: 8-11B			API/UWI #: 05-045-19129	
Field: PARACHUTE		City (SAP): PARACHUTE		County/Parish: Garfield		State: Colorado	
Legal Description:							
Lat: N 39.382 deg. OR N 39 deg. 22 min. 54.25 secs.				Long: W 108.026 deg. OR W -109 deg. 58 min. 25.856 secs.			
Contractor: H&P 322			Rig/Platform Name/Num: H&P 322				
Job Purpose: Cement Surface Casing						Ticket Amount:	
Well Type: Development Well			Job Type: Cement Surface Casing				
Sales Person: METLI, MARSHALL			Srvc Supervisor: MAIN, CHAD			MBU ID Emp #: 335770	

Activity Description	Date/Time	Cht #	Rate bbl/min	Volume bbl		Pressure psig		Comments
				Stage	Total	Tubing	Casing	
Depart Yard Safety Meeting	09/07/2010 16:30							ALL HES PERSONNEL
Depart from Service Center or Other Site	09/07/2010 17:00							ONE ELITE, ONE BULK TRUCKS, ONE PICK UP
Arrive At Loc	09/07/2010 17:30							RIG WAS WAITING ON HES WHEN WE ARRIVED
Assessment Of Location Safety Meeting	09/07/2010 17:50							LOCATION CLEAN
Pre-Rig Up Safety Meeting	09/07/2010 17:55							ALL HES PERSONNEL
Rig-Up Equipment	09/07/2010 18:00							OFF LINE CEMENT JOB PUMPING THROUGH A SWAGE
Rig-Up Completed	09/07/2010 18:55							NO CHARGES FOR PLUG CONTAINER, QUIK LATCH, ADD HRS, OF DERRICK CHARGES
Pre-Job Safety Meeting	09/07/2010 19:00							ALL LOCATION PERSONNEL
Start Job	09/07/2010 19:16							TD 1564' CSG 1531' SJ 42.12' MUD 9.3
Pressure Test	09/07/2010 19:24						2200.0	
Pump Spacer 1	09/07/2010 19:26		2	20			23.0	H2O HES HAD FULL CIRCULATION ENTIRE JOB
Pump Lead Cement	09/07/2010 19:33		6	88.1			125.0	208 SKS AT 12.3 PPG 2.37 FT3/SK 13.76 GAL/SK
Pump Tail Cement	09/07/2010 19:47		6	47.7			96.0	127 SKS AT 12.8 PPG 2.11FT3/SK 11.75 GAL/SK

Activity Description	Date/Time	Cht #	Rate bbl/ min	Volume bbl		Pressure psig		Comments
				Stage	Total	Tubing	Casing	
Shutdown	09/07/2010 19:55							
Drop Top Plug	09/07/2010 19:58							TAKE OFF SWAGE AND PUSH PLUG INTO CASING
Pump Displacement	09/07/2010 20:00		8	94.6			97.0	H2O
Bump Plug	09/07/2010 20:18		2	94.6			345.0	HES RETURNED 5 BBLS OF CEMENT TO SURFACE
Check Floats	09/07/2010 20:20						920.0	FLOATS HELD
End Job	09/07/2010 20:21							
Pre-Rig Down Safety Meeting	09/07/2010 20:25							ALL HES PERSONNEL
Rig-Down Equipment	09/07/2010 20:30							
Rig-Down Completed	09/07/2010 21:30							
Depart Location Safety Meeting	09/07/2010 21:40							ALL HES PERSONNEL
Depart Location for Service Center or Other Site	09/07/2010 21:50							LOCATION WAS LEFT AS CLEAN AS IT WAS WHEN HES ARRIVED
Other	09/07/2010 21:51							THANK YOU FOR USING HALLIBURTON GRAND JUNCTION CHAD MAIN AND CREW

NOBLE SURFACE



Local Event Log			
[1] START JOB	19:16:36	[2] FILL LINES	19:17:42
[3] PRESSURE TEST	19:24:16	[4] PUMP FRESH WATER	19:26:03
[5] PUMP LEAD CEMENT	19:33:28	[6] PUMP TAIL CEMENT	19:47:52
[7] SHUTDOWN	19:55:53	[8] DROP PLUG	19:58:11
[9] START DISPLACEMENT	20:00:50	[10] SLOWED RATE	20:14:18
[11] BUMP PLUG	20:18:23	[12] CHECK FLOATS	20:20:21
[13] END JOB	20:21:27		

Customer: NOBLE
Well Description: FEDERAL 8-11B
Company Rep: CHARLES COLLVER

Job Date: 07-Sep-2010
Job Type: SURFACE
Cement Supervisor: CHAD MAIN

Sales Order #: 7610507
ADC Used: YES
Elite #: 2/TRAVIS BROWN

OptiCem v6.4.2
07-Sep-10 20:32