

---

# **NOBLE ENERGY INC E-BUSINESS**

---

**FEDERAL 7-41C  
PARACHUTE  
Garfield County , Colorado**

**Cement Surface Casing**  
13-Sep-2010

**Post Job Report**

## The Road to Excellence Starts with Safety

Sold To #: 345242	Ship To #: 2804056	Quote #:	Sales Order #: 7609139
Customer: NOBLE ENERGY INC E-BUSINESS	Customer Rep: WILKERSON, KENNY		
Well Name: FEDERAL	Well #: 7-41C	API/UWI #: 05-045-19141	
Field: PARACHUTE	City (SAP): PARACHUTE	County/Parish: Garfield	State: Colorado
Lat: N 39.382 deg. OR N 39 deg. 22 min. 53.911 secs.	Long: W 108.026 deg. OR W -109 deg. 58 min. 25.104 secs.		
Contractor: H&P 322	Rig/Platform Name/Num: H&P 322		
Job Purpose: Cement Surface Casing			
Well Type: Development Well	Job Type: Cement Surface Casing		
Sales Person: METLI, MARSHALL	Srv Supervisor: KUKUS, CRAIG	MBU ID Emp #: 369124	

## Job Personnel

HES Emp Name	Exp Hrs	Emp #	HES Emp Name	Exp Hrs	Emp #	HES Emp Name	Exp Hrs	Emp #
DOUT, JACOB J	5	430298	HAYES, JESSE Doug	5	403601	KUKUS, CRAIG A	5	369124
ROCKERT, CHRISTOPHER Michael	5	332914	TRIPLETT, MICHEAL Anthony	5	447908			

## Equipment

HES Unit #	Distance-1 way	HES Unit #	Distance-1 way	HES Unit #	Distance-1 way	HES Unit #	Distance-1 way
10248057	60 mile	10551730C	60 mile	10804487	60 mile	10829469	60 mile
10867304	60 mile	10998054	60 mile				

## Job Hours

Date	On Location Hours	Operating Hours	Date	On Location Hours	Operating Hours	Date	On Location Hours	Operating Hours
9/13/2010	5	3						

**TOTAL** Total is the sum of each column separately

## Job

Job					Job Times				
Formation Name						Date	Time	Time Zone	
Formation Depth (MD)	Top			Bottom		Called Out	13 - Sep - 2010	01:00	MST
Form Type				BHST		On Location	13 - Sep - 2010	05:00	MST
Job depth MD	1501. ft			Job Depth TVD	1501. ft	Job Started	13 - Sep - 2010	07:21	MST
Water Depth				Wk Ht Above Floor	4. ft	Job Completed	13 - Sep - 2010	08:33	MST
Perforation Depth (MD)	From			To		Departed Loc	13 - Sep - 2010	10:00	MST

## Well Data

Description	New / Used	Max pressure psig	Size in	ID in	Weight lbm/ft	Thread	Grade	Top MD ft	Bottom MD ft	Top TVD ft	Bottom TVD ft
-------------	------------	-------------------	---------	-------	---------------	--------	-------	-----------	--------------	------------	---------------

Sales/Rental/3<sup>rd</sup> Party (HES)

Description	Qty	Qty uom	Depth	Supplier
PLUG,CMTG,TOP,8 5/8,HWE,7.20 MIN/8.09 MA	1	EA		
ADC (AUTO DENSITY CTRL) SYS, /JOB,ZI	1	JOB		
PORT. DAS W/CEMWIN;ACQUIRE W/HES, ZI	1	JOB		
R/A DENSOMETER W/CHART RECORDER,/JOB,ZI	1	JOB		

## Tools and Accessories

Type	Size	Qty	Make	Depth	Type	Size	Qty	Make	Depth	Type	Size	Qty	Make
Guide Shoe					Packer					Top Plug	8 5/8	1	HES
Float Shoe					Bridge Plug					Bottom Plug			
Float Collar					Retainer					SSR plug set			
Insert Float										Plug Container			
Stage Tool										Centralizers			

## Miscellaneous Materials

Gelling Agt	Conc	Surfactant	Conc	Acid Type	Qty	Conc	%
Treatment Fld	Conc	Inhibitor	Conc	Sand Type	Size	Qty	

## Fluid Data

Stage/Plug #: 1

Fluid #	Stage Type	Fluid Name	Qty	Qty uom	Mixing Density lbm/gal	Yield ft <sup>3</sup> /sk	Mix Fluid Gal/sk	Rate bbl/min	Total Mix Fluid Gal/sk
1	WATER SPACER		20.00	bbl	8.33	.0	.0	.0	
2	Lead Cement	VERSACEM (TM) SYSTEM (452010)	226.0	sacks	12.3	2.38	13.75		13.75
	13.75 Gal	FRESH WATER							
3	Tail Cement	VERSACEM (TM) SYSTEM (452010)	146.0	sacks	12.8	2.11	11.75		11.75
	11.75 Gal	FRESH WATER							
4	DISPLACEMENT		93.00	bbl	8.33	.0	.0	.0	
<b>Calculated Values</b>		<b>Pressures</b>		<b>Volumes</b>					
Displacement	92.6	Shut In: Instant		Lost Returns	0	Cement Slurry	150	Pad	
Top Of Cement	SURFACE	5 Min		Cement Returns	20	Actual Displacement	92.6	Treatment	
Frac Gradient		15 Min		Spacers	20	Load and Breakdown		Total Job	263
<b>Rates</b>									
Circulating	6	Mixing	6	Displacement	6	Avg. Job	6		
Cement Left In Pipe	Amount	0 ft	Reason	Shoe Joint					
Frac Ring # 1 @	ID	Frac ring # 2 @	ID	Frac Ring # 3 @	ID	Frac Ring # 4 @	ID		
The Information Stated Herein Is Correct				Customer Representative Signature					

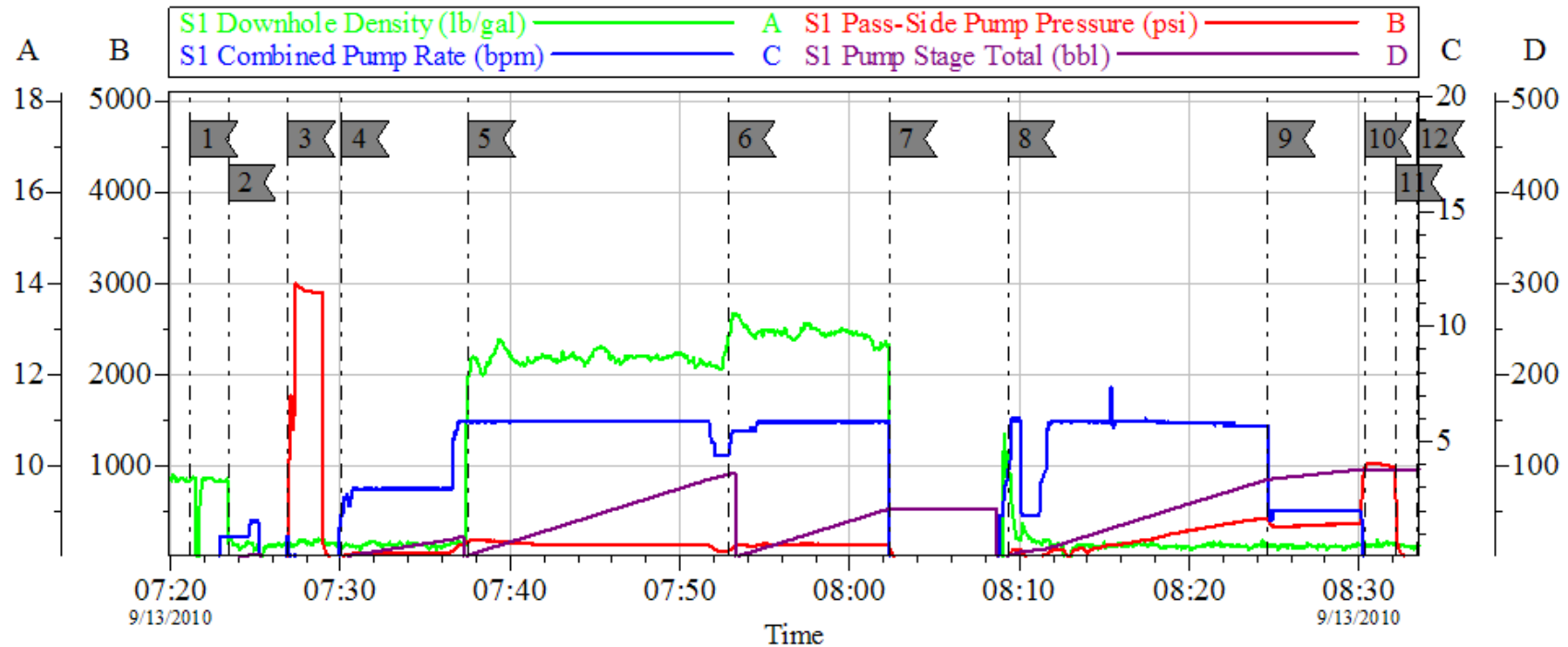
*The Road to Excellence Starts with Safety*

<b>Sold To #:</b> 345242	<b>Ship To #:</b> 2804056	<b>Quote #:</b>	<b>Sales Order #:</b> 7609139
<b>Customer:</b> NOBLE ENERGY INC E-BUSINESS		<b>Customer Rep:</b> WILKERSON, KENNY	
<b>Well Name:</b> FEDERAL		<b>Well #:</b> 7-41C	<b>API/UWI #:</b> 05-045-19141
<b>Field:</b> PARACHUTE	<b>City (SAP):</b> PARACHUTE	<b>County/Parish:</b> Garfield	<b>State:</b> Colorado
<b>Legal Description:</b>			
<b>Lat:</b> N 39.382 deg. OR N 39 deg. 22 min. 53.911 secs.		<b>Long:</b> W 108.026 deg. OR W -109 deg. 58 min. 25.104 secs.	
<b>Contractor:</b> H&P 322		<b>Rig/Platform Name/Num:</b> H&P 322	
<b>Job Purpose:</b> Cement Surface Casing			<b>Ticket Amount:</b>
<b>Well Type:</b> Development Well		<b>Job Type:</b> Cement Surface Casing	
<b>Sales Person:</b> METLI, MARSHALL		<b>Srvc Supervisor:</b> KUKUS, CRAIG	<b>MBU ID Emp #:</b> 369124

Activity Description	Date/Time	Cht #	Rate bbl/min	Volume bbl		Pressure psig		Comments
				Stage	Total	Tubing	Casing	
Call Out	09/13/2010 01:00							
Depart Yard Safety Meeting	09/13/2010 03:00							SAFETY MEETING INVOLVING THE ENTIRE CMT CREW
Arrive At Loc	09/13/2010 05:00							
Assessment Of Location Safety Meeting	09/13/2010 05:05							ASSESSMENT OF LOCATION INVOLVING THE ENTIRE CMT CREW
Pre-Rig Up Safety Meeting	09/13/2010 05:10							SAFETY MEETING INVOLVING THE ENTIRE CMT CREW
Rig-Up Equipment	09/13/2010 05:15							
Circulate Well	09/13/2010 06:30							RIG CIRCULATED FRO AN HOUR AT 6BBLS/MIN MUD:9.3LBS/GAL
Pre-Job Safety Meeting	09/13/2010 07:00							SAFETY MEETING INVOLVING EVERYONE ON LOCATION
Start Job	09/13/2010 07:21							TD:1501.03 SJ:45 MUD:9.3LBS/GAL OFFLINE CEMENT JOB NO ADDITIONAL HOURS
Other	09/13/2010 07:23		2	2			16.0	FILL LINES
Pressure Test	09/13/2010 07:26		0.5			3000.0		PRESSURE TEST GOOD
Pump Spacer 1	09/13/2010 07:30		2	20			130.0	FRESH WATER SPACER

Activity Description	Date/Time	Cht #	Rate bbl/min	Volume bbl		Pressure psig		Comments
				Stage	Total	Tubing	Casing	
Pump Lead Cement	09/13/2010 07:37		6	95.8			160.0	226SACKS 12.3LBS/GAL 2.11FT3/GAL 13.75GALS/SACK
Pump Tail Cement	09/13/2010 07:52		6	54.8			150.0	146 SACKS 12.8LBS/GAL 2.38FT3/SACK 11.75 GAL/SACK
Shutdown	09/13/2010 08:02							
Drop Top Plug	09/13/2010 08:05							PLUG LEFT THE PLUG CONTAINER
Pump Displacement	09/13/2010 08:09		6	92.6			400.0	
Slow Rate	09/13/2010 08:24		2	82.6			352.0	
Bump Plug	09/13/2010 08:30		2	92.6			1044.0	PLUG LANDED
Check Floats	09/13/2010 08:32							FLOATS HELD
End Job	09/13/2010 08:33							CIRCULATION THROUGH OUT JOB 20BBLs OF CEMENT BACK TO SURFACE
Pre-Rig Down Safety Meeting	09/13/2010 08:40							SAFETY MEETING INVOLVING THE ENTIRE CMT CREW
Rig-Down Equipment	09/13/2010 08:45							
Safety Meeting - Departing Location	09/13/2010 09:45							SAFETY MEETING INVOLVING THE ENTIRE CMT CREW
Comment	09/13/2010 10:00							THANK YOU FOR USING HALLIBURTON, CRAIG KUKUS AND CREW

# NOBLE SURFACE 8 5/8



## Local Event Log

1	START JOB	07:21:11	2	PRIME LINES	07:23:25
3	PRESSURE TEST	07:26:55	4	PUMP SPACER	07:30:05
5	PUMP LEAD CMT	07:37:30	6	PUMP TAIL CMT	07:52:50
7	SHUT DOWN/DROP PLUG	08:02:19	8	PUMP DISPLACEMENT	08:09:19
9	SLOW RATE	08:24:39	10	BUMP PLUG	08:30:19
11	CHECK FLOATS	08:32:09	12	END JOB	08:33:24

Customer: NOBLE  
Well Description: FEDERAL 7-41C  
Company Rep: KENNY WILKERSON

Job Date: 13-Sep-2010  
Job Type: SURFACE  
Cement Supervisor: CRAIG KUKUS

Sales Order #: 7609139  
ADC Used: YES  
Elite #/Operator: 2/ JESSE HAYES

OptiCem v6.4.8  
13-Sep-10 08:55