

---

**NOBLE ENERGY INC E-BUSINESS**

---

**Federal 7-41 B  
PARACHUTE  
Garfield County , Colorado**

**Cement Surface Casing**  
**12-Sep-2010**

**Post Job Report**

## The Road to Excellence Starts with Safety

<b>Sold To #:</b> 345242		<b>Ship To #:</b> 2804055		<b>Quote #:</b>		<b>Sales Order #:</b> 7609184							
<b>Customer:</b> NOBLE ENERGY INC E-BUSINESS				<b>Customer Rep:</b> Wilkerson, Kenny									
<b>Well Name:</b> Federal			<b>Well #:</b> 7-41 B			<b>API/UWI #:</b> 05-05-19130							
<b>Field:</b> PARACHUTE		<b>City (SAP):</b> PARACHUTE		<b>County/Parish:</b> Garfield		<b>State:</b> Colorado							
<b>Lat:</b> N 39.382 deg. OR N 39 deg. 22 min. 54.029 secs.				<b>Long:</b> W 108.026 deg. OR W -109 deg. 58 min. 25.148 secs.									
<b>Contractor:</b> H&P 322			<b>Rig/Platform Name/Num:</b> H&P 322										
<b>Job Purpose:</b> Cement Surface Casing													
<b>Well Type:</b> Development Well				<b>Job Type:</b> Cement Surface Casing									
<b>Sales Person:</b> METLI, MARSHALL			<b>Srvc Supervisor:</b> PHILLIPS, MARK			<b>MBU ID Emp #:</b> 445272							
<b>Job Personnel</b>													
<b>HES Emp Name</b>	<b>Exp Hrs</b>	<b>Emp #</b>	<b>HES Emp Name</b>	<b>Exp Hrs</b>	<b>Emp #</b>	<b>HES Emp Name</b>	<b>Exp Hrs</b>	<b>Emp #</b>					
ARNOLD, EDWARD John	5	439784	dout, jacob	5	430298	DUBON, TODD N	5	443351					
PHILLIPS, MARK Bejar	5	445272											
<b>Equipment</b>													
<b>HES Unit #</b>	<b>Distance-1 way</b>	<b>HES Unit #</b>	<b>Distance-1 way</b>	<b>HES Unit #</b>	<b>Distance-1 way</b>	<b>HES Unit #</b>	<b>Distance-1 way</b>						
10248057	60 mile	10867304	60 mile	10951250	60 mile	10998054	60 mile						
11360871	60 mile	11542767	60 mile										
<b>Job Hours</b>													
<b>Date</b>	<b>On Location Hours</b>	<b>Operating Hours</b>	<b>Date</b>	<b>On Location Hours</b>	<b>Operating Hours</b>	<b>Date</b>	<b>On Location Hours</b>	<b>Operating Hours</b>					
09-12-2010	5	1											
<b>TOTAL</b>		Total is the sum of each column separately											
<b>Job</b>				<b>Job Times</b>									
<b>Formation Name</b>				<b>Date</b>		<b>Time</b>		<b>Time Zone</b>					
<b>Formation Depth (MD)</b>	<b>Top</b>	<b>Bottom</b>		<b>Called Out</b>	11 - Sep - 2010	22:00	CST						
<b>Form Type</b>	BHST			<b>On Location</b>	12 - Sep - 2010	02:30	CST						
<b>Job depth MD</b>	1504. ft		<b>Job Depth TVD</b>	1504. ft	<b>Job Started</b>	12 - Sep - 2010	06:15	CST					
<b>Water Depth</b>			<b>Wk Ht Above Floor</b>	. ft	<b>Job Completed</b>	12 - Sep - 2010	07:27	CST					
<b>Perforation Depth (MD)</b>	<b>From</b>	<b>To</b>		<b>Departed Loc</b>	12 - Sep - 2010	09:00	CST						
<b>Well Data</b>													
<b>Description</b>	<b>New / Used</b>	<b>Max pressure psig</b>	<b>Size in</b>	<b>ID in</b>	<b>Weight lbm/ft</b>	<b>Thread</b>	<b>Grade</b>	<b>Top MD ft</b>	<b>Bottom MD ft</b>	<b>Top TVD ft</b>	<b>Bottom TVD ft</b>		
<b>Sales/Rental/3<sup>rd</sup> Party (HES)</b>													
<b>Description</b>					<b>Qty</b>	<b>Qty uom</b>	<b>Depth</b>	<b>Supplier</b>					
PLUG,CMTG,TOP,8 5/8,HWE,7.20 MIN/8.09 MA					1	EA							
ADC (AUTO DENSITY CTRL) SYS, /JOB,ZI					1	JOB							
PORT. DAS W/CEMWIN;ACQUIRE W/HES, ZI					1	JOB							
R/A DENSOMETER W/CHART RECORDER,/JOB,ZI					1	JOB							
<b>Tools and Accessories</b>													
<b>Type</b>	<b>Size</b>	<b>Qty</b>	<b>Make</b>	<b>Depth</b>	<b>Type</b>	<b>Size</b>	<b>Qty</b>	<b>Make</b>	<b>Depth</b>	<b>Type</b>	<b>Size</b>	<b>Qty</b>	<b>Make</b>
Guide Shoe					Packer					Top Plug	8.625	1	HES
Float Shoe					Bridge Plug					Bottom Plug			
Float Collar					Retainer					SSR plug set			
Insert Float										Plug Container			
Stage Tool										Centralizers			
<b>Miscellaneous Materials</b>													
<b>Gelling Agt</b>		<b>Conc</b>		<b>Surfactant</b>		<b>Conc</b>		<b>Acid Type</b>		<b>Qty</b>		<b>Conc</b>	<b>%</b>
<b>Treatment Fld</b>		<b>Conc</b>		<b>Inhibitor</b>		<b>Conc</b>		<b>Sand Type</b>		<b>Size</b>		<b>Qty</b>	

Fluid Data										
Stage/Plug #: 1										
Fluid #	Stage Type	Fluid Name	Qty	Qty uom	Mixing Density lbm/gal	Yield ft <sup>3</sup> /sk	Mix Fluid Gal/sk	Rate bbl/min	Total Mix Fluid Gal/sk	
1	WATER SPACER		20.00	bbl	8.33	.0	.0	2.0		
2	Lead Cement	VERSACEM (TM) SYSTEM (452010)	226.0	sacks	12.3	2.38	13.75	5.5	13.75	
	13.75 Gal	FRESH WATER								
3	Tail Cement	VERSACEM (TM) SYSTEM (452010)	137.0	sacks	12.8	2.11	11.75	5.5	11.75	
	11.75 Gal	FRESH WATER								
4	DISPLACEMENT			bbl	8.33	.0	.0	5.5		
Calculated Values		Pressures		Volumes						
Displacement	92.8	Shut In: Instant		Lost Returns	0	Cement Slurry	147	Pad		
Top Of Cement	SURFACE	5 Min		Cement Returns	20	Actual Displacement	92.8	Treatment		
Frac Gradient		15 Min		Spacers	20	Load and Breakdown		Total Job	260	
Rates										
Circulating	6	Mixing	5.5	Displacement	5.5	Avg. Job	5			
Cement Left In Pipe	Amount	45 ft	Reason	Shoe Joint						
Frac Ring # 1 @	ID	Frac ring # 2 @	ID	Frac Ring # 3 @	ID	Frac Ring # 4 @	ID			
The Information Stated Herein Is Correct				Customer Representative Signature						

*The Road to Excellence Starts with Safety*

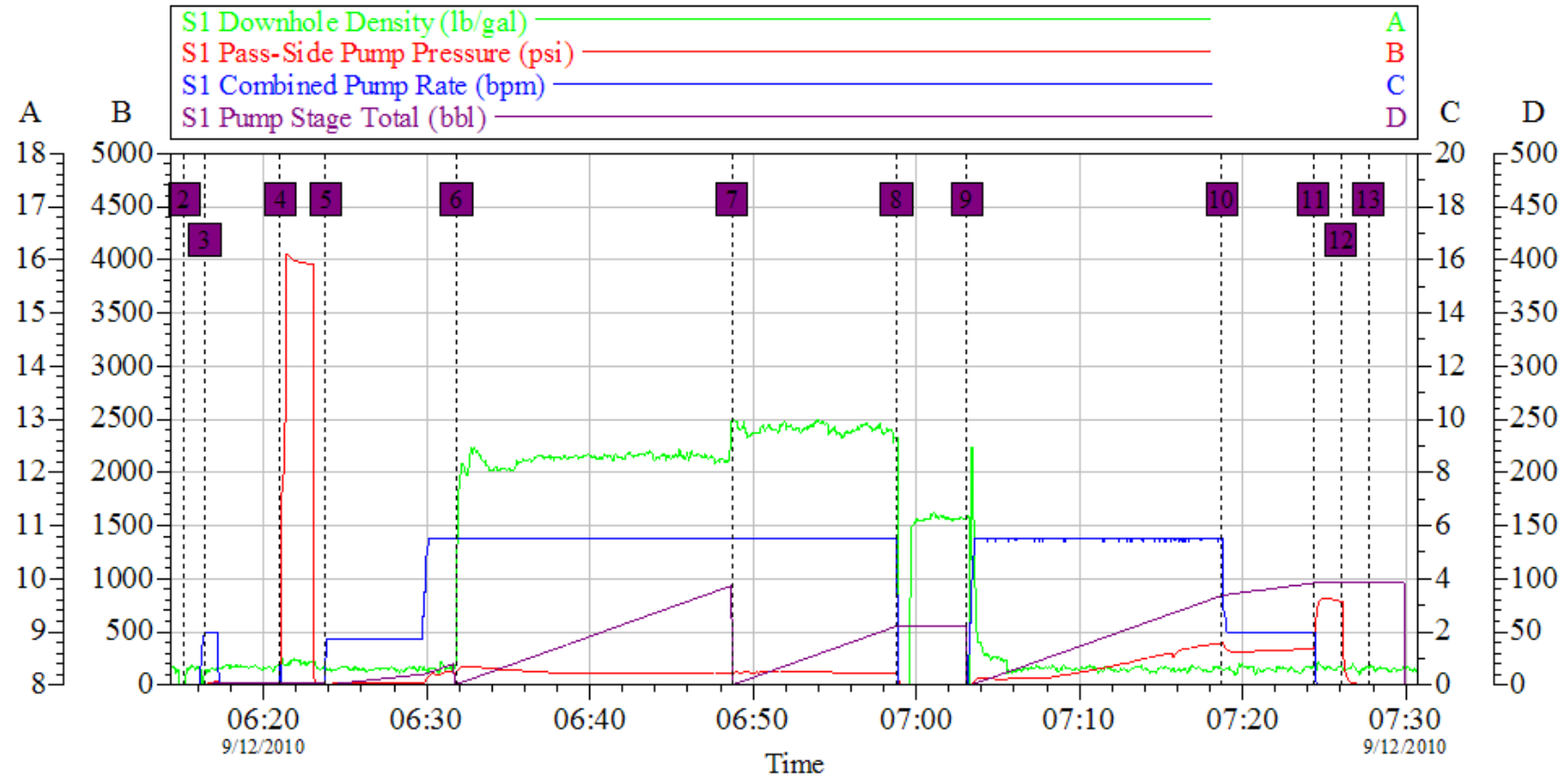
<b>Sold To #:</b> 345242	<b>Ship To #:</b> 2804055	<b>Quote #:</b>	<b>Sales Order #:</b> 7609184
<b>Customer:</b> NOBLE ENERGY INC E-BUSINESS		<b>Customer Rep:</b> Wilkerson, Kenny	
<b>Well Name:</b> Federal	<b>Well #:</b> 7-41 B	<b>API/UWI #:</b> 05-05-19130	
<b>Field:</b> PARACHUTE	<b>City (SAP):</b> PARACHUTE	<b>County/Parish:</b> Garfield	<b>State:</b> Colorado
<b>Legal Description:</b>			
<b>Lat:</b> N 39.382 deg. OR N 39 deg. 22 min. 54.029 secs.		<b>Long:</b> W 108.026 deg. OR W -109 deg. 58 min. 25.148 secs.	
<b>Contractor:</b> H&P 322		<b>Rig/Platform Name/Num:</b> H&P 322	
<b>Job Purpose:</b> Cement Surface Casing			<b>Ticket Amount:</b>
<b>Well Type:</b> Development Well		<b>Job Type:</b> Cement Surface Casing	
<b>Sales Person:</b> METLI, MARSHALL		<b>Srv Supervisor:</b> PHILLIPS, MARK	<b>MBU ID Emp #:</b> 445272

Activity Description	Date/Time	Cht #	Rate bbl/min	Volume bbl		Pressure psig		Comments
				Stage	Total	Tubing	Casing	
Call Out	09/11/2010 22:00							
Pre-Convoy Safety Meeting	09/12/2010 01:00							ALL HES EMPLOYEES
Arrive At Loc	09/12/2010 02:30							RIG STILL RUNNING CASING
Assessment Of Location Safety Meeting	09/12/2010 02:45							ALL HES EMPLOYEES
Rig-Up Equipment	09/12/2010 03:00							1 HT 400 PUMP TRUCK, 1 660 BULK TRUCK, 1 BODYLOAD, 1 8.625 SWAGE, 1 2" VALVE. THIS WILL BE AN OFFLINE JOB RIG UP WILL BE IN CELLER.
Pre-Job Safety Meeting	09/12/2010 05:30							ALL HES EMPLOYEES, RIG CREW, CO REP.
Start Job	09/12/2010 06:15							SP 1504', TD 1528', ' , FC 1459', HOLE 12.25", SJ 45', MUD WT 9.2 PPG, 600 BBLS OF H2O ON LOCATION, WATER SAMPLE SUBMITTED.
Pump Water	09/12/2010 06:16		2	2			45.0	FILL LINES
Pressure Test	09/12/2010 06:21		0.5				4000.0	NO LEAKS
Pump Spacer 1	09/12/2010 06:23		2	20			48.0	FRESH WATER

Activity Description	Date/Time	Cht #	Rate bbl/min	Volume bbl		Pressure psig		Comments
				Stage	Total	Tubing	Casing	
Pump Lead Cement	09/12/2010 06:31		6	95.8			130.0	226 SKS VERSACEM CMT MIXED AT 12.3 PPG, 2.38 YIELD, 13.75 GAL/SK, CMT TO BE WEIGHED VIA PRESSURE BALANCED MUD SCALES. WET AND DRY SAMPLES SUBMITTED.
Pump Tail Cement	09/12/2010 06:48		6	51.5			140.0	137 SKS VERSACEM CMT TO BE MIXED AT 12.8 PPG, 2.11 YIELD, 11.75 GAL/SK, CMT TO BE WEIGHED VIA PRESSURE BALANCED MUD SCALES. WET AND DRY SAMPLES SUBMITTED.
Shutdown	09/12/2010 06:58							
Drop Plug	09/12/2010 06:59							PLUG LAUNCHED. REMOVED SWAGE INSTALLED PLUG.
Pump Displacement	09/12/2010 07:03		6	92.8			280.0	FRESH WATER
Slow Rate	09/12/2010 07:18		2	82			330.0	10 BBLS PRIOR TO CALCULATED DISPLACEMENT
Cement Returns to Surface	09/12/2010 07:19		2	80			355.0	GOOD CEMENT RETURNS NOTED AT 85 BBL AWAY 20 BBL CMT TO SURFACE.
Bump Plug	09/12/2010 07:24		2	92.8			810.0	PLUG LANDED HOLD FOR TWO MINUTES
Check Floats	09/12/2010 07:26							FLOATS HOLDING
End Job	09/12/2010 07:27							THANK YOU FOR USING HES FROM MARK PHILLIPS AND CREW.
Post-Job Safety Meeting (Pre Rig-Down)	09/12/2010 07:45							ALL HES EMPLOYEES
Rig-Down Equipment	09/12/2010 08:00							SAFELY
Pre-Convoy Safety Meeting	09/12/2010 09:00							ALL HES EMPLOYEES

Activity Description	Date/Time	Cht #	Rate bbl/ min	Volume bbl		Pressure psig		Comments
				Stage	Total	Tubing	Casing	
Crew Leave Location	09/12/2010 09:15							SITE WAS AS CLEAN AS WHEN WE ARRIVED

# NOBLE FEDERAL 7-41B SURFACE



## Global Event Log

2 Start Job	06:15:08	3 Pump Water	06:16:24	4 Test Lines	06:21:02
5 Pump Spacer 1	06:23:49	6 Pump Lead Cement	06:31:50	7 Pump Tail Cement	06:48:43
8 Shutdown	06:58:47	9 Pump Displacement	07:03:05	10 Slow Rate	07:18:44
11 Bump Plug	07:24:20	12 Check Floats	07:26:01	13 End Job	07:27:43

Customer: NOBLE  
Well Description: FEDERAL  
Company Rep: KENNY WILKERSON

Job Date: 12-Sep-2010  
Job Type: SURFACE  
Cement Supervisor: MARK PHILLIPS

Sales Order #: 7609184  
ADC Used: YES  
Elite #:1 TODD DUBON

OptiCem v6.4.5  
12-Sep-10 07:35