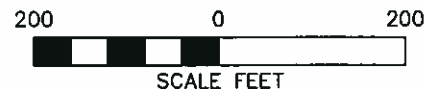
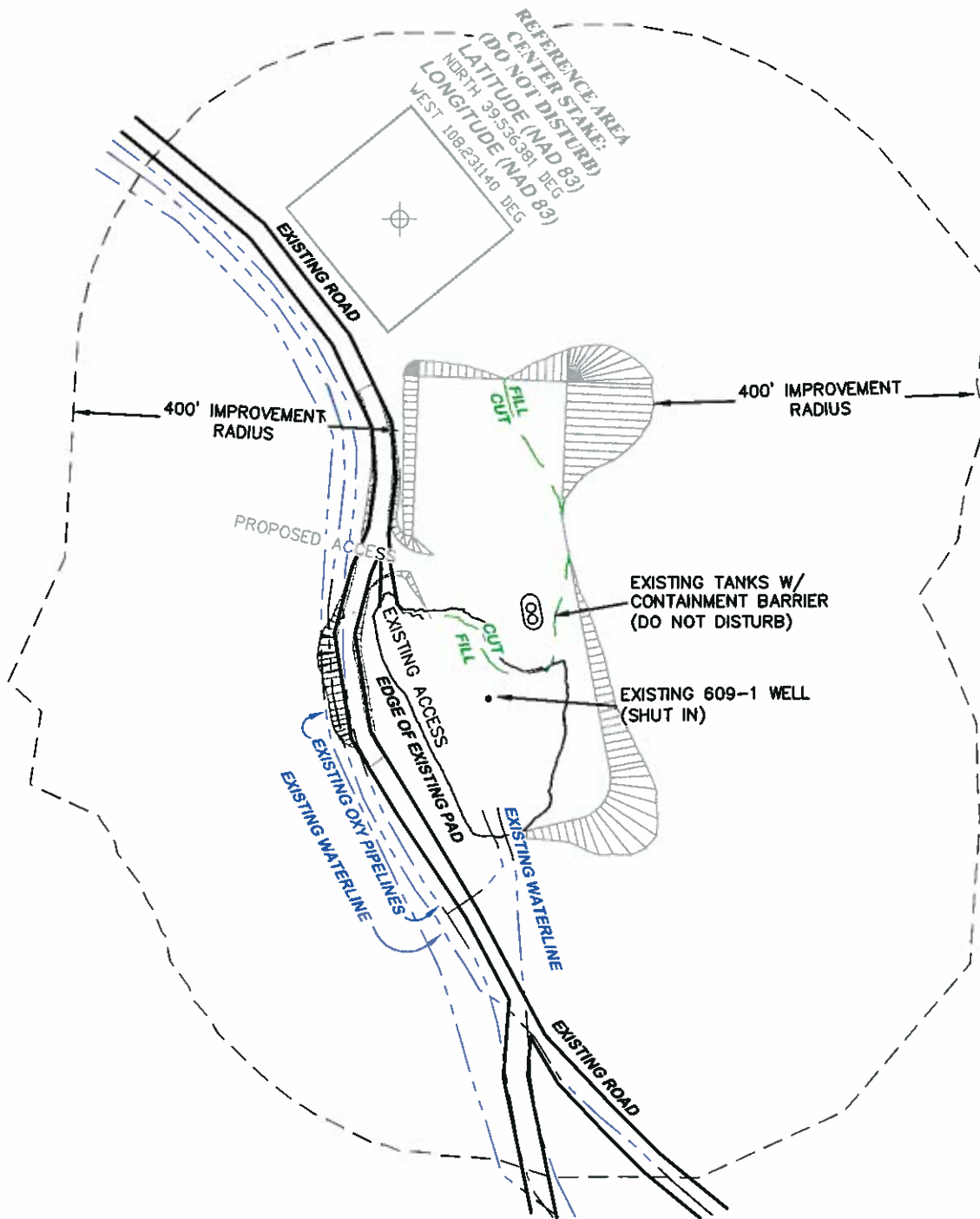


EXISTING PAD ELEVATION: 8497.6'
 PROPOSED NEW AREA OF DISTURBANCE: 2.7± ACRES
 TOTAL NEW USABLE AREA: 2.6± ACRES

LOCATION DRAWING



**BEFORE DIGGING
 CALL FOR
 UTILITY LINE LOCATION**

CC 609-1 PAD



RIFFIN & ASSOCIATES, INC.
 1414 ELK ST., ROCK SPRINGS, WY 82901

(307) 362-5028

DRAWN: 3/14/11 - DEH

SCALE: 1" = 200'

REVISED: 3/16/11 - DEH

DRG JOB No. 18351

ADDED REF. AREA

EXHIBIT 2B

LOCATION DRAWING

**OXY USA WTP LP
 CASCADE CREEK 609-1 PAD EXPANSION
 NWSW SECTION 9, T. 6 S., R. 97 W., 6th P.M.,
 GARFIELD COUNTY, COLORADO**