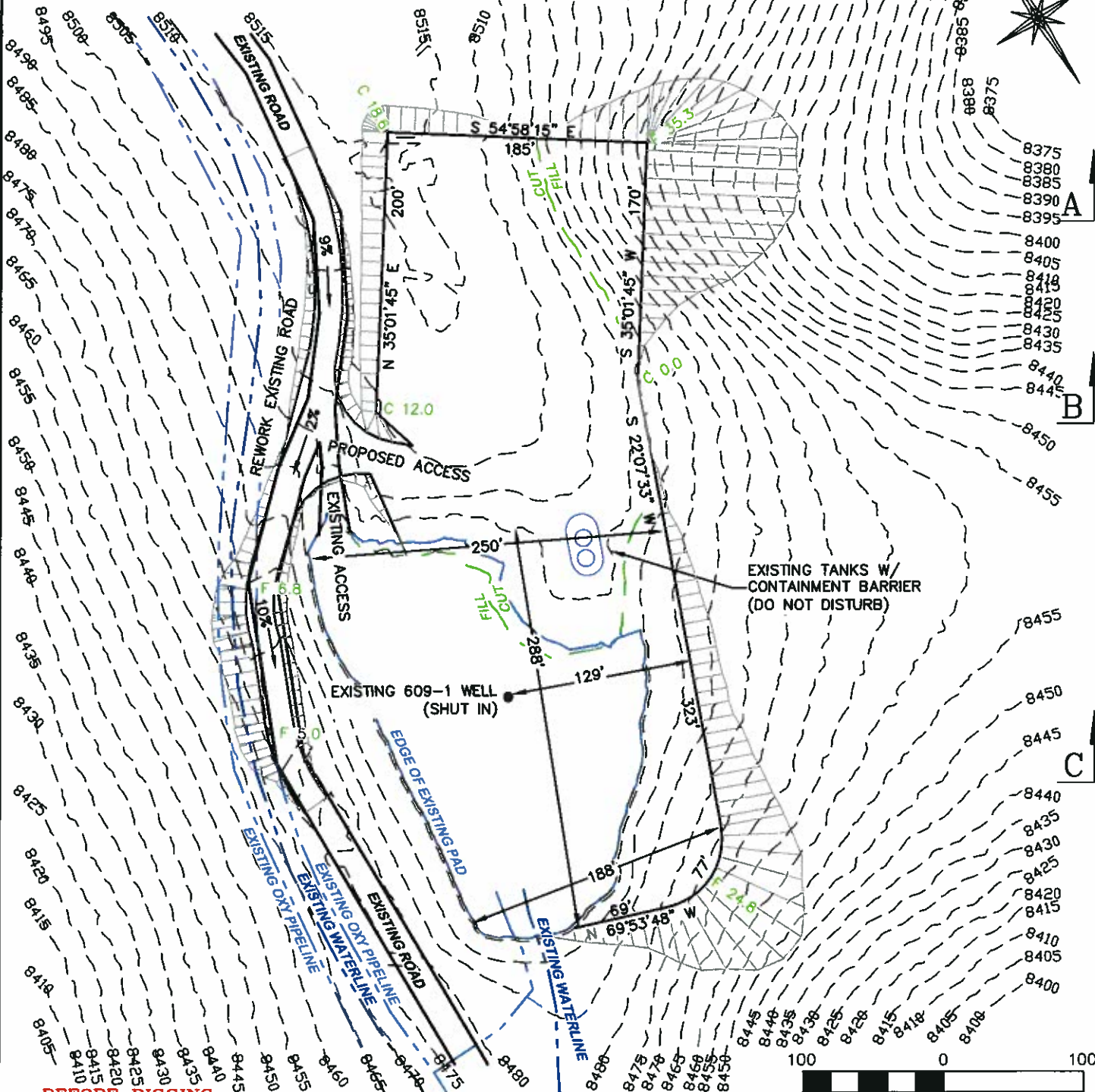


EXISTING PAD ELEVATION: 8497.6'  
 PROPOSED NEW AREA OF DISTURBANCE: 2.7± ACRES  
 TOTAL NEW USABLE AREA: 2.6± ACRES



**BEFORE DIGGING  
 CALL FOR  
 UTILITY LINE LOCATION**

NOTE: THE EARTH QUANTITIES ON  
 THIS DRAWING ARE ESTIMATED AND  
 THE USE OF SAID QUANTITIES IS AT  
 THE RESPONSIBILITY OF THE USER.



**RIFIN & ASSOCIATES, INC.**  
 1414 ELK ST., ROCK SPRINGS, WY 82901

(307) 382-5028

DRAWN: 3/14/11 - DEH

SCALE: 1" = 100'

REVISED: N/A

DRG JOB No. 18351

EXHIBIT 2

CC 609-1 PAD

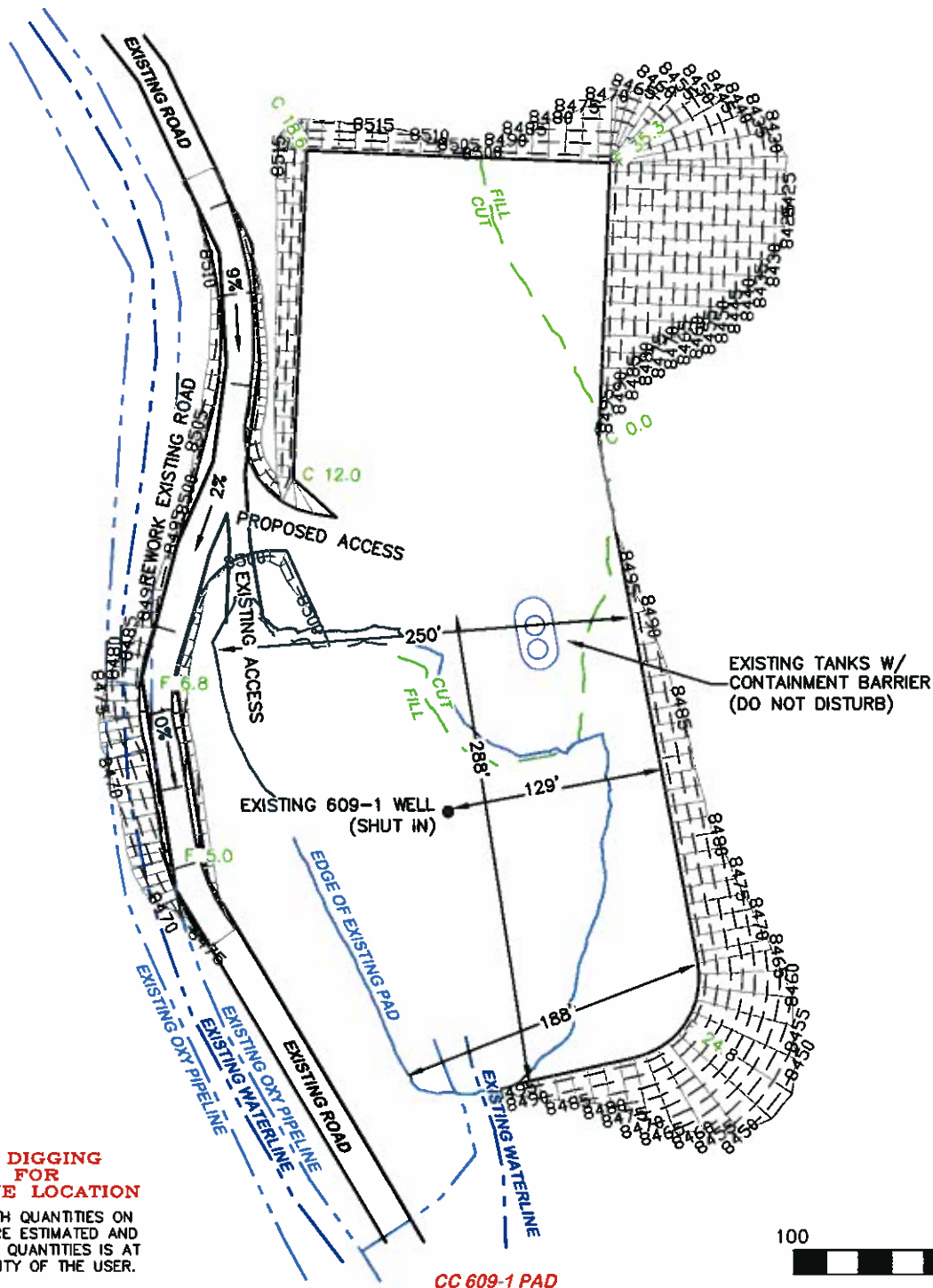
**CONSTRUCTION LAYOUT DRAWING 1 OF 3**

**OXY USA WTP LP  
 PROPOSED CASCADE CREEK 609-1 PAD EXPANSION,  
 NWSW SECTION 9, T. 6 S., R. 97 W., 6th P.M.,  
 GARFIELD COUNTY, COLORADO**

**ESTIMATED EARTHWORK**

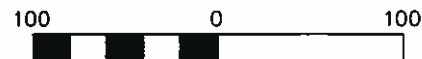
ITEM	CUT	FILL	TOPSOIL	EXCESS
PAD	23,763 CY	21,823 CY	1,240 CY	700 CY
PIT (NONE)				
TOTALS	23,763 CY	21,823 CY	1,240 CY	700 CY

# DESIGN CONTOURS



**BEFORE DIGGING  
CALL FOR  
UTILITY LINE LOCATION**  
NOTE: THE EARTH QUANTITIES ON  
THIS DRAWING ARE ESTIMATED AND  
THE USE OF SAID QUANTITIES IS AT  
THE RESPONSIBILITY OF THE USER.

CC 609-1 PAD



**DRIFIN & ASSOCIATES, INC.**

(307) 362-6028

1414 ELK ST., ROCK SPRINGS, WY 82901

DRAWN: 3/14/11 - DEH

SCALE: 1" = 80'

REVISED: N/A

JOB No. 18351

EXHIBIT 2A

**CONSTRUCTION LAYOUT DRAWING 2 OF 3**

**DESIGN CONTOURS  
OXY USA WTP LP**

**PROPOSED CASCADE CREEK 609-1 PAD EXPANSION,  
NWSW SECTION 9, T. 6 S., R. 97 W., 6th P.M.,  
GARFIELD COUNTY, COLORADO**