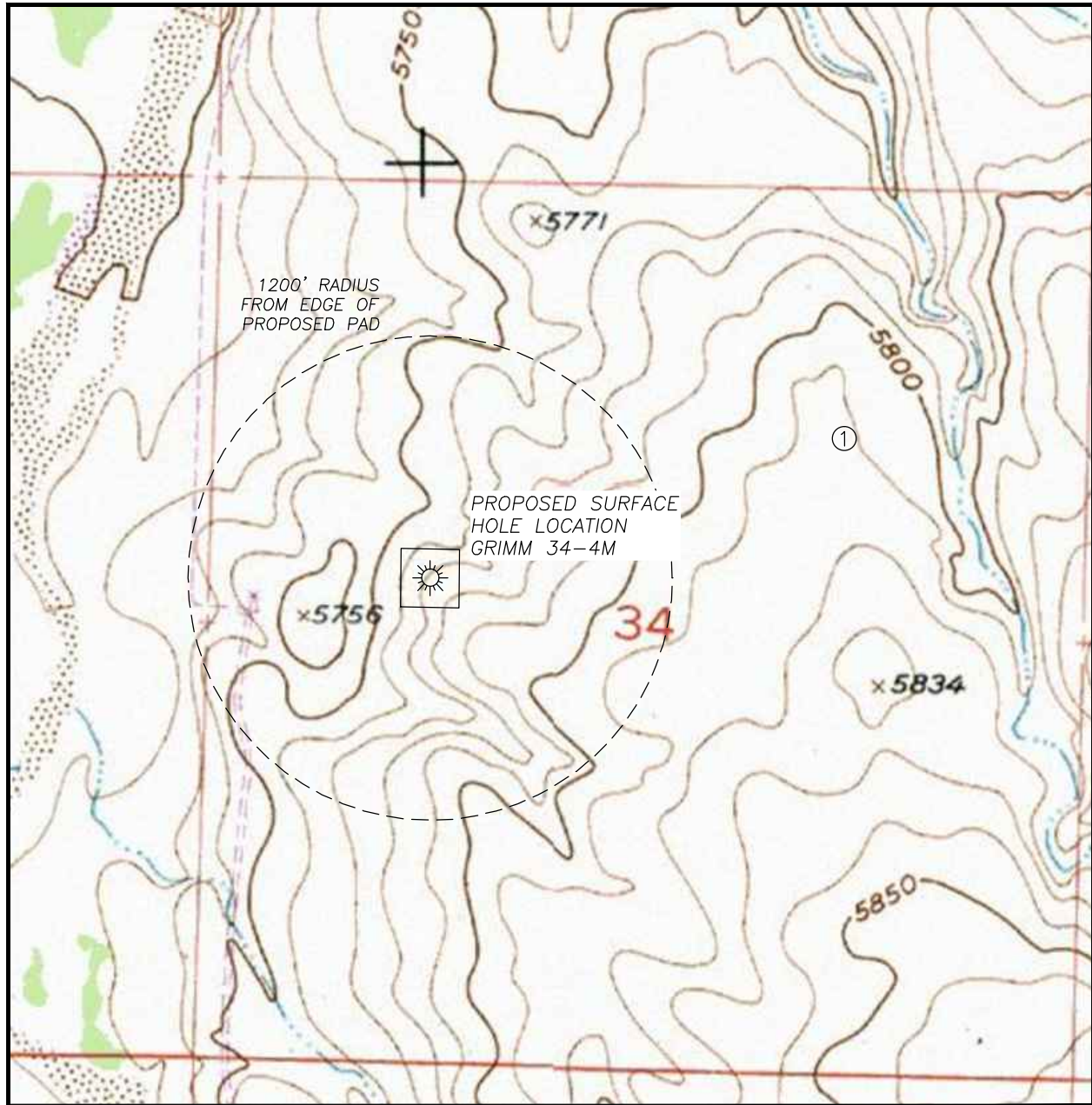


HYDROLOGY MAP GRIMM 34-4M

SECTION 34, TOWNSHIP 4 SOUTH, RANGE 64 WEST OF THE 6TH PRINCIPAL MERIDIAN



NO VISIBLE SURFACE WATER WITHIN
1200' OF PROPOSED WELL PAD LOCATION

1. WATER WELL PER COGCC: 2600'± NE
SURFACE WATER RADIUS EXTENDS 1200'
BEYOND THE EDGE OF THE PROPOSED PAD

