

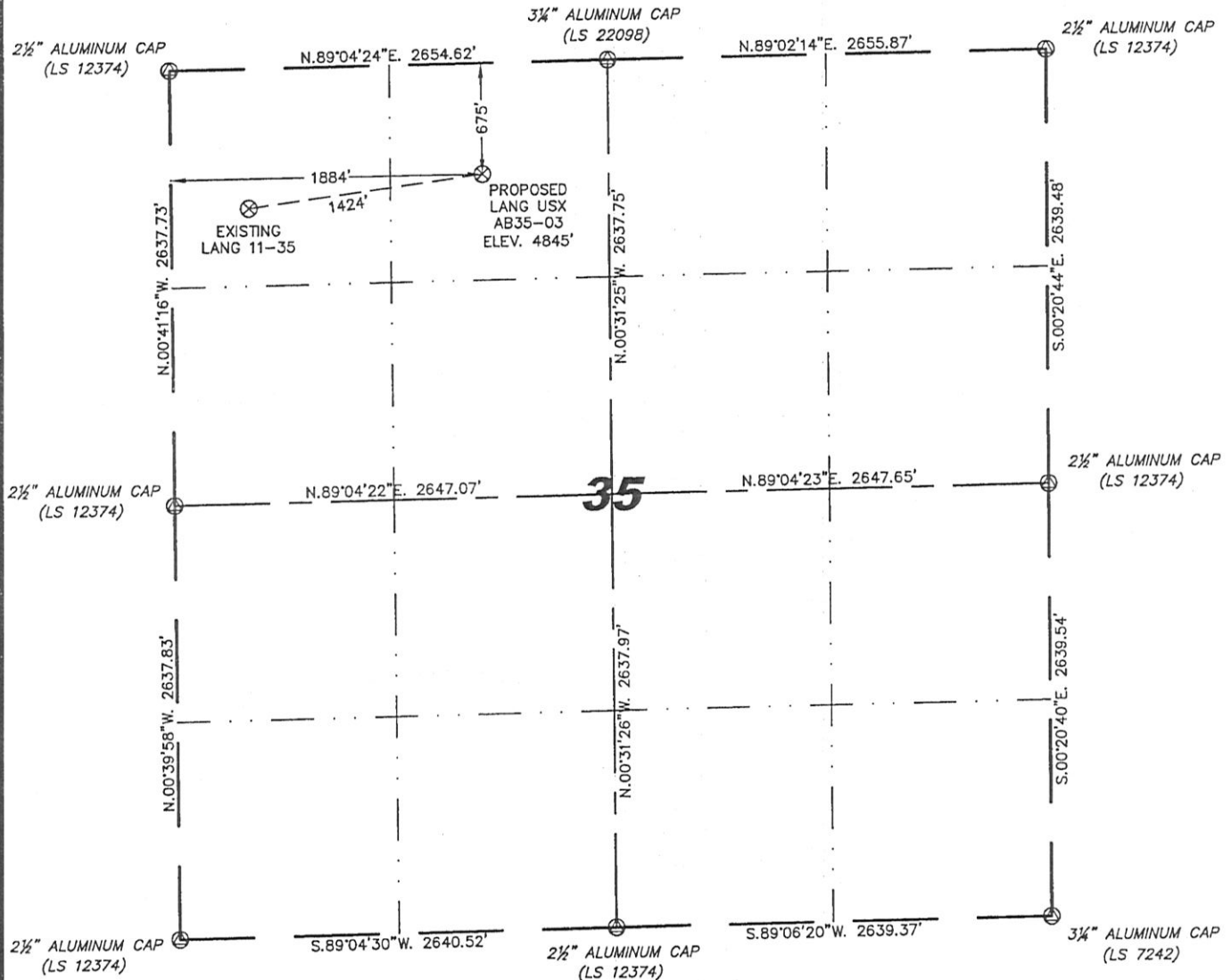
Steil Surveying Services, LLC

1102 West 19th Street P.O. BOX 2073

Cheyenne, Wyoming 82009

WELL LOCATION CERTIFICATE
THIS MAP DOES NOT REPRESENT A BOUNDARY SURVEY

SECTION 35
TOWNSHIP 7 NORTH
RANGE 64 WEST



0 1000
Scale: 1" = 1000'

IN ACCORDANCE WITH A REQUEST FROM RYAN ANTONIO - NOBLE ENERGY INC, STEIL SURVEYING SERVICES, LLC HAS DETERMINED THE LOCATION OF THE LANG USX AB35-03 WELL TO BE 675' FNL, 1884' FWL, AS MEASURED AT NINETY (90) DEGREES FROM THE SECTION LINES, SECTION 35, TOWNSHIP 7 NORTH, RANGE 64 WEST, 6TH PRINCIPLE MERIDIAN, WELD COUNTY, COLORADO.

I HEREBY CERTIFY THAT THIS WELL LOCATION CERTIFICATE WAS PREPARED BY ME, OR UNDER MY DIRECT SUPERVISION, THAT THE FIELD WORK WAS COMPLETED ON 12/02/2010, FOR AND ON BEHALF OF NOBLE ENERGY INC, THAT IT IS NOT A LAND SURVEY PLAT OR AN IMPROVEMENT SURVEY PLAT, AND THAT IT IS NOT TO BE RELIED UPON FOR ESTABLISHMENT OF FENCE, BUILDING, OR OTHER FUTURE IMPROVEMENT LINES.

NOTES:

- 1) BASIS OF BEARINGS FOR THIS MAP ARE BASED UPON GPS OBSERVATIONS MADE ON 10/13/2010 BETWEEN MONUMENTS LOCATED AT THE SOUTHEAST SECTION CORNER AND THE NORTHEAST SECTION CORNER OF SAID SECTION AND WITH ALL BEARINGS SHOWN HEREON RELATIVE THERETO.
- 2) COORDINATES SHOWN ARE COLORADO STATE PLANE (NORTH ZONE) NAD 83.
- 3) ELEVATIONS ARE BASED UPON NGS OPUS SOLUTION NAVD 88 DATUM.
- 4) THE NEAREST EXISTING WELL IS: LANG 11-35, 1424' WEST.
- 5) SEE LOCATION DRAWING FOR ALL IMPROVEMENTS WITHIN VISIBLE IMPROVEMENTS LIMIT.
- 6) THE LOCATION FALLS IN IRRIGATED CROP LAND.

LATITUDE & LONGITUDE (NAD 83 SURFACE HOLE)
LATITUDE: N 40.53520°
LONGITUDE: W 104.51997°
PDOP: 1.7
QUARTER-QUARTER: NE/4NW/4
NEAREST PROPERTY LINE: 580' +/- NORTHEAST

LEGEND

- ⊙ FOUND SURVEY MONUMENT PER MONUMENT RECORD - EXCEPTIONS NOTED.
- (C) CALCULATED DIMENSION



Completed 12/22/2010

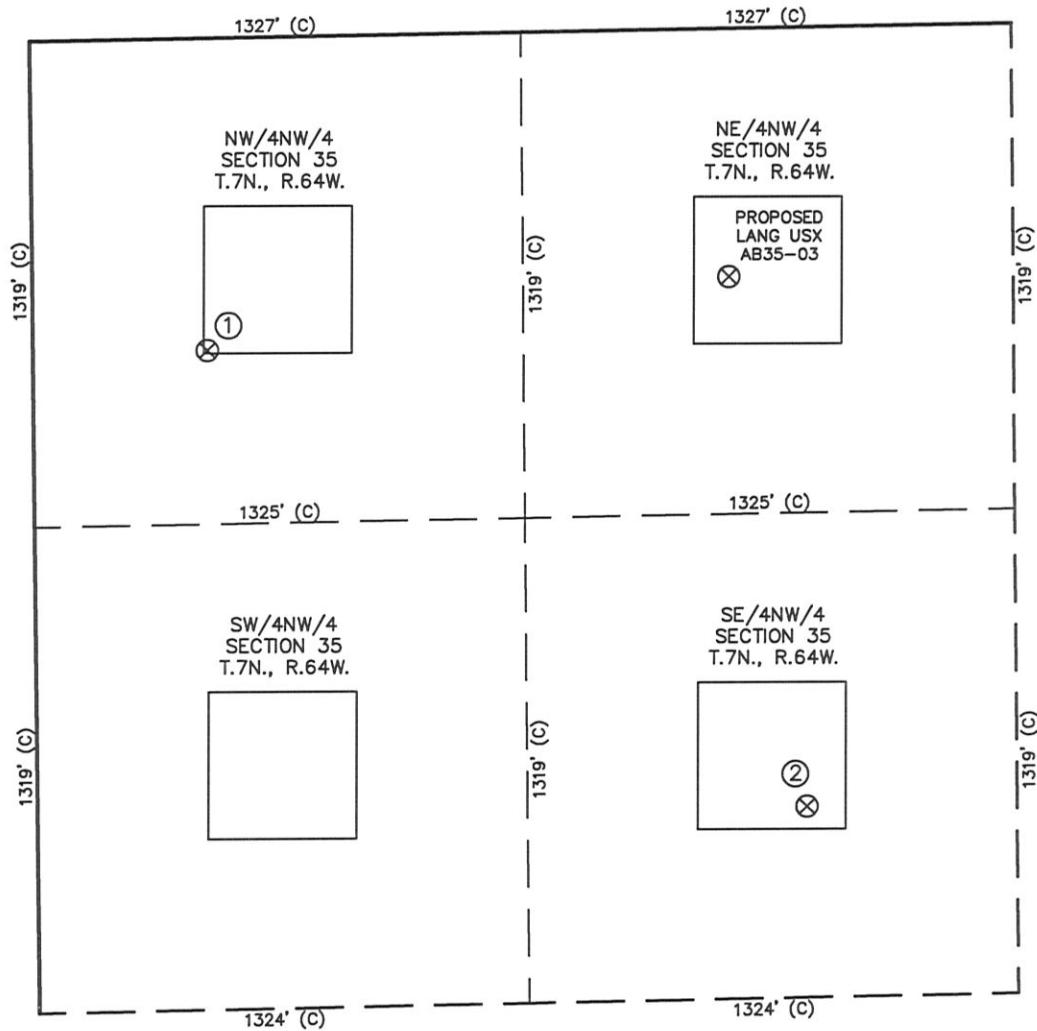
David C. Holmes
Professional Land Surveyor Registration No. 32828
State of Colorado

JOB #: 10086

NOTICE: According to Colorado law you MUST commence any legal action based upon any defect in this W.L.C. within three years after you first discover such defect. In no event may any action based upon any defect in this W.L.C. be commenced more than ten years from this said date of the certification shown hereon.

SKETCH – LANG USX AB35-03

SECTION 35
TOWNSHIP 7 NORTH
RANGE 64 WEST



①

LANG 11-35
NW/NW SEC. 35
848' FNL
472' FWL
EL 4862'
N 40.53470
W 104.52505
PDOP 3.2

②

LANG USX
AB35-6
SE/NW SEC. 35
2118' FNL
2081' FWL
EL 4836'
N 40.53124
W 104.51926
PDOP 1.8

NOTES:

- 1) THIS SKETCH DOES NOT REPRESENT A BOUNDARY SURVEY.
- 2) THE DATUM FOR THE LATITUDES AND LONGITUDES ON THIS SKETCH IS NAD83.



0 500

Scale: 1" = 500'