



Bill Barrett Corporation

Bill Barrett Corp.

Garfield County, Colorado

MDP 15 Pad

GGU Swanson 32A-29-691

Wellbore #1

Survey: Surveys

Standard Survey Report

19 November, 2010

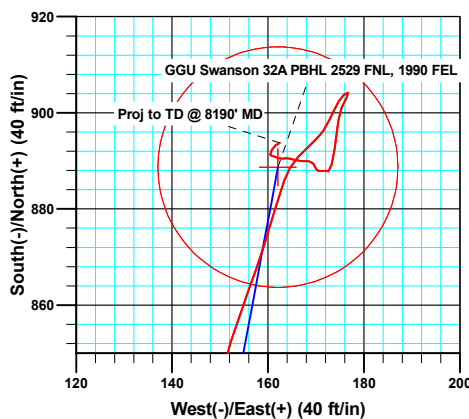
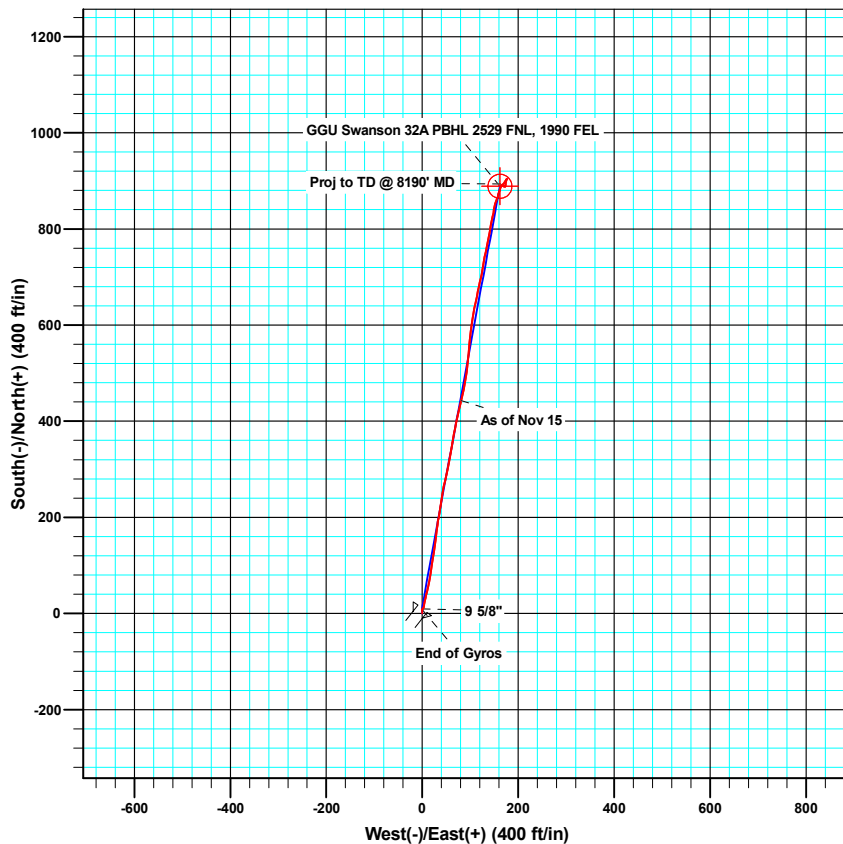
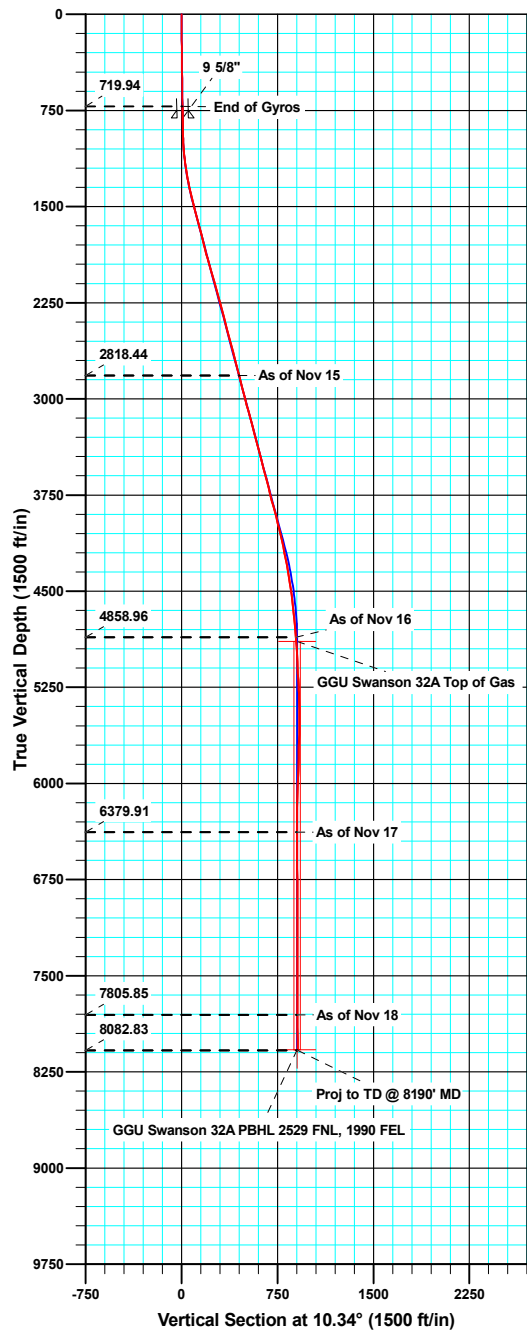




WELL DETAILS: GGU Swanson 32A-29-691

Ground Level: 6030.20

North American Datum 1983			US State Plane 1983			Colorado Central Zone	
+N/-S	+E/-W	Northing	Easting	Latitude	Longitude		
0.00	0.00	1612504.61	2414183.16	39° 29' 48.21 N	107° 34' 33.93 W		



Azimuths to True North
Magnetic North: 10.23°

Magnetic Field
Strength: 52411.5nT
Dip Angle: 65.85°
Date: 09/10/2010
Model: IGRF200510

ANNOTATIONS

TVD	MD	Inc	Azi	+N/-S	+E/-W	Vsect	Departure	Annotation
2818.44	2873.00	14.30	13.90	443.29	81.46	450.71	443.74	As of Nov 15
4858.96	4965.00	4.40	16.60	879.75	161.41	894.43	888.35	As of Nov 16
6379.91	6487.00	0.50	276.50	887.89	171.37	904.23	937.23	As of Nov 17
7805.85	7913.00	0.40	350.80	891.32	160.47	905.64	949.93	As of Nov 18
8082.83	8190.00	0.70	64.00	893.76	162.46	908.41	953.28	Proj to TD @ 8190' MD

Company:	Bill Barrett Corp.	Local Co-ordinate Reference:	Well GGU Swanson 32A-29-691
Project:	Garfield County, Colorado	TVD Reference:	KB @ 6053.20ft
Site:	MDP 15 Pad	MD Reference:	KB @ 6053.20ft
Well:	GGU Swanson 32A-29-691	North Reference:	True
Wellbore:	Wellbore #1	Survey Calculation Method:	Minimum Curvature
Design:	Wellbore #1	Database:	Compass VM

Project	Garfield County, Colorado		
Map System:	US State Plane 1983	System Datum:	Mean Sea Level
Geo Datum:	North American Datum 1983		
Map Zone:	Colorado Central Zone		

Site		MDP 15 Pad			
Site Position:		Northing:	1,612,474.12 usft	Latitude:	39° 29' 47.92 N
From:	Lat/Long	Easting:	2,414,257.84 usft	Longitude:	107° 34' 32.97 W
Position Uncertainty:	0.00 ft	Slot Radius:	1.10 ft	Grid Convergence:	-1.31 °

Well		GGU Swanson 32A-29-691				
Well Position	+N/-S	0.00 ft	Northing:	1,612,504.60 usft	Latitude:	39° 29' 48.21 N
	+E/-W	0.00 ft	Easting:	2,414,183.17 usft	Longitude:	107° 34' 33.93 W
Position Uncertainty		0.00 ft	Wellhead Elevation:	ft	Ground Level:	6,030.20 ft

Wellbore	Wellbore #1				
Magnetics	Model Name	Sample Date	Declination (°)	Dip Angle (°)	Field Strength (nT)
	IGRF200510	09/10/10	10.24	65.85	52,411

Design	Wellbore #1				
Audit Notes:					
Version:	1.0	Phase:	ACTUAL	Tie On Depth:	0.00
Vertical Section:	Depth From (TVD) (ft)	+N/-S (ft)	+E/-W (ft)	Direction (°)	
	0.00	0.00	0.00	10.34	

Survey Program	Date	11/19/10			
From (ft)	To (ft)	Survey (Wellbore)	Tool Name	Description	
50.00	720.00	Gyro Surveys (Wellbore #1)	MWD	MWD - Standard	
877.00	8,190.00	Surveys (Wellbore #1)	MWD	MWD - Standard	

Survey										
Measured Depth (ft)	Inclination (°)	Azimuth (°)	Vertical Depth (ft)	+N/-S (ft)	+E/-W (ft)	Vertical Section (ft)	Dogleg Rate (°/100ft)	Build Rate (°/100ft)	Turn Rate (°/100ft)	
720.00	0.87	356.99	719.94	8.32	0.30	8.24	0.00	0.00	0.00	
810.00	0.74	37.95	809.94	9.46	0.62	9.42	0.64	-0.15	45.51	
9 5/8"										
877.00	0.90	66.10	876.93	10.01	1.36	10.10	0.64	0.25	42.01	
972.00	2.60	20.60	971.89	12.33	2.81	12.64	2.18	1.79	-47.89	
1,067.00	5.10	9.60	1,066.66	18.51	4.27	18.98	2.73	2.63	-11.58	
1,162.00	7.30	10.50	1,161.10	28.61	6.07	29.24	2.32	2.32	0.95	
1,257.00	9.70	13.80	1,255.05	42.32	9.08	43.26	2.58	2.53	3.47	
1,352.00	12.00	12.40	1,348.35	59.74	13.11	61.12	2.44	2.42	-1.47	
1,447.00	14.80	8.40	1,440.76	81.40	17.01	83.13	3.10	2.95	-4.21	

Company:	Bill Barrett Corp.	Local Co-ordinate Reference:	Well GGU Swanson 32A-29-691
Project:	Garfield County, Colorado	TVD Reference:	KB @ 6053.20ft
Site:	MDP 15 Pad	MD Reference:	KB @ 6053.20ft
Well:	GGU Swanson 32A-29-691	North Reference:	True
Wellbore:	Wellbore #1	Survey Calculation Method:	Minimum Curvature
Design:	Wellbore #1	Database:	Compass VM

Survey									
Measured Depth (ft)	Inclination (°)	Azimuth (°)	Vertical Depth (ft)	+N/-S (ft)	+E/-W (ft)	Vertical Section (ft)	Dogleg Rate (°/100ft)	Build Rate (°/100ft)	Turn Rate (°/100ft)
1,542.00	14.40	9.40	1,532.69	105.05	20.71	107.06	0.50	-0.42	1.05
1,637.00	14.90	8.80	1,624.60	128.78	24.51	131.08	0.55	0.53	-0.63
1,732.00	14.30	7.20	1,716.53	152.49	27.84	155.01	0.76	-0.63	-1.68
1,828.00	13.90	6.70	1,809.64	175.70	30.68	178.36	0.44	-0.42	-0.52
1,923.00	16.30	10.80	1,901.35	200.14	34.51	203.08	2.76	2.53	4.32
2,018.00	15.90	8.40	1,992.63	226.10	38.91	229.42	0.82	-0.42	-2.53
2,113.00	15.60	8.40	2,084.06	251.61	42.67	255.19	0.32	-0.32	0.00
2,208.00	15.50	13.60	2,175.59	276.59	47.52	280.63	1.47	-0.11	5.47
2,303.00	15.40	11.90	2,267.16	301.27	53.11	305.91	0.49	-0.11	-1.79
2,398.00	14.80	9.70	2,358.88	325.57	57.75	330.65	0.87	-0.63	-2.32
2,493.00	14.80	11.20	2,450.73	349.44	62.16	354.92	0.40	0.00	1.58
2,588.00	14.40	8.60	2,542.66	373.02	66.28	378.86	0.81	-0.42	-2.74
2,683.00	14.90	13.40	2,634.57	396.58	70.88	402.86	1.38	0.53	5.05
2,778.00	14.60	11.90	2,726.44	420.18	76.18	427.03	0.51	-0.32	-1.58
2,873.00	14.30	13.90	2,818.44	443.29	81.46	450.71	0.61	-0.32	2.11
2,968.00	14.50	11.70	2,910.45	466.32	86.69	474.31	0.61	0.21	-2.32
3,064.00	14.10	8.50	3,003.48	489.65	90.86	498.01	0.92	-0.42	-3.33
3,159.00	15.70	7.40	3,095.28	513.85	94.23	522.41	1.71	1.68	-1.16
3,254.00	15.30	5.10	3,186.83	539.08	96.99	547.73	0.77	-0.42	-2.42
3,349.00	15.20	3.00	3,278.49	564.00	98.76	572.57	0.59	-0.11	-2.21
3,444.00	14.40	8.50	3,370.34	588.12	101.16	596.73	1.70	-0.84	5.79
3,539.00	14.90	9.70	3,462.25	611.84	104.96	620.75	0.62	0.53	1.26
3,634.00	14.00	9.90	3,554.24	635.20	109.00	644.45	0.95	-0.95	0.21
3,729.00	15.10	12.50	3,646.20	658.61	113.65	668.31	1.35	1.16	2.74
3,824.00	13.60	11.40	3,738.23	681.64	118.54	691.84	1.60	-1.58	-1.16
3,919.00	15.80	12.70	3,830.11	705.21	123.59	715.94	2.34	2.32	1.37
4,014.00	14.70	8.70	3,921.77	729.74	128.26	740.91	1.60	-1.16	-4.21
4,110.00	13.30	12.50	4,014.92	752.56	132.49	764.12	1.74	-1.46	3.96
4,205.00	12.70	12.20	4,107.48	773.44	137.06	785.48	0.64	-0.63	-0.32
4,300.00	11.30	7.30	4,200.41	792.88	140.45	805.21	1.82	-1.47	-5.16
4,395.00	10.10	13.00	4,293.76	810.23	143.51	822.83	1.68	-1.26	6.00
4,490.00	9.20	12.00	4,387.41	825.77	146.96	838.74	0.96	-0.95	-1.05
4,585.00	8.20	8.10	4,481.32	839.91	149.49	853.10	1.22	-1.05	-4.11
4,680.00	7.10	17.10	4,575.47	852.23	152.17	865.70	1.71	-1.16	9.47
4,775.00	6.50	21.20	4,669.81	862.85	155.84	876.81	0.81	-0.63	4.32
4,870.00	5.30	17.10	4,764.30	872.06	159.08	886.45	1.34	-1.26	-4.32
4,965.00	4.40	16.60	4,858.96	879.75	161.41	894.43	0.95	-0.95	-0.53
5,060.00	3.50	18.90	4,953.73	885.98	163.39	900.92	0.96	-0.95	2.42
5,156.00	3.40	42.10	5,049.56	890.87	166.25	906.24	1.45	-0.10	24.17
5,251.00	2.70	50.10	5,144.43	894.39	169.85	910.35	0.86	-0.74	8.42
5,346.00	3.80	25.20	5,239.28	898.68	172.91	915.12	1.86	1.16	-26.21
5,441.00	1.20	29.80	5,334.18	902.39	174.75	919.10	2.74	-2.74	4.84
5,536.00	0.90	48.00	5,429.17	903.75	175.80	920.63	0.47	-0.32	19.16

Company:	Bill Barrett Corp.	Local Co-ordinate Reference:	Well GGU Swanson 32A-29-691
Project:	Garfield County, Colorado	TVD Reference:	KB @ 6053.20ft
Site:	MDP 15 Pad	MD Reference:	KB @ 6053.20ft
Well:	GGU Swanson 32A-29-691	North Reference:	True
Wellbore:	Wellbore #1	Survey Calculation Method:	Minimum Curvature
Design:	Wellbore #1	Database:	Compass VM

Survey										
Measured Depth (ft)	Inclination (°)	Azimuth (°)	Vertical Depth (ft)	+N/-S (ft)	+E/-W (ft)	Vertical Section (ft)	Dogleg Rate (°/100ft)	Build Rate (°/100ft)	Turn Rate (°/100ft)	
5,631.00	0.40	95.90	5,524.16	904.22	176.68	921.24	0.73	-0.53	50.42	
5,726.00	1.40	211.50	5,619.15	903.19	176.40	920.19	1.70	1.05	121.68	
5,821.00	1.50	201.10	5,714.12	901.04	175.35	917.88	0.30	0.11	-10.95	
5,916.00	1.80	187.20	5,809.08	898.40	174.71	915.17	0.52	0.32	-14.63	
6,011.00	1.90	190.30	5,904.03	895.37	174.25	912.11	0.15	0.11	3.26	
6,106.00	1.80	182.90	5,998.98	892.33	173.89	909.05	0.27	-0.11	-7.79	
6,201.00	2.00	197.60	6,093.93	889.26	173.31	905.93	0.55	0.21	15.47	
6,296.00	0.30	310.40	6,188.91	887.84	172.62	904.41	2.25	-1.79	118.74	
6,392.00	0.40	255.70	6,284.91	887.92	172.11	904.39	0.35	0.10	-56.98	
6,487.00	0.50	276.50	6,379.91	887.89	171.37	904.23	0.20	0.11	21.89	
6,582.00	0.30	271.30	6,474.91	887.94	170.71	904.16	0.21	-0.21	-5.47	
6,677.00	0.10	268.60	6,569.91	887.94	170.38	904.11	0.21	-0.21	-2.84	
6,772.00	0.40	332.20	6,664.90	888.24	170.14	904.35	0.39	0.32	66.95	
6,867.00	0.40	322.80	6,759.90	888.79	169.79	904.83	0.07	0.00	-9.89	
6,962.00	0.60	335.30	6,854.90	889.51	169.38	905.47	0.24	0.21	13.16	
7,057.00	0.80	269.30	6,949.89	889.95	168.51	905.75	0.82	0.21	-69.47	
7,152.00	1.00	273.80	7,044.88	890.00	167.02	905.52	0.22	0.21	4.74	
7,248.00	0.80	282.80	7,140.87	890.20	165.53	905.46	0.25	-0.21	9.38	
7,343.00	0.50	288.90	7,235.86	890.49	164.49	905.55	0.32	-0.32	6.42	
7,438.00	0.40	257.90	7,330.86	890.55	163.77	905.48	0.27	-0.11	-32.63	
7,533.00	0.50	274.40	7,425.86	890.51	163.04	905.31	0.17	0.11	17.37	
7,628.00	0.60	275.80	7,520.85	890.59	162.13	905.23	0.11	0.11	1.47	
7,723.00	0.40	316.10	7,615.85	890.88	161.40	905.39	0.41	-0.21	42.42	
7,818.00	0.40	258.30	7,710.85	891.06	160.85	905.45	0.41	0.00	-60.84	
7,913.00	0.40	350.80	7,805.85	891.32	160.47	905.64	0.61	0.00	97.37	
8,008.00	0.90	33.10	7,900.84	892.27	160.82	906.64	0.70	0.53	44.53	
8,104.00	0.60	44.60	7,996.83	893.26	161.59	907.75	0.35	-0.31	11.98	
8,145.00	0.70	64.00	8,037.83	893.52	161.97	908.08	0.59	0.24	47.32	
8,190.00	0.70	64.00	8,082.83	893.76	162.46	908.41	0.00	0.00	0.00	

Casing Points					
Measured Depth (ft)	Vertical Depth (ft)	Name	Casing Diameter (ft)	Hole Diameter (ft)	
810.00	809.94	9 5/8"	0.80	1.02	