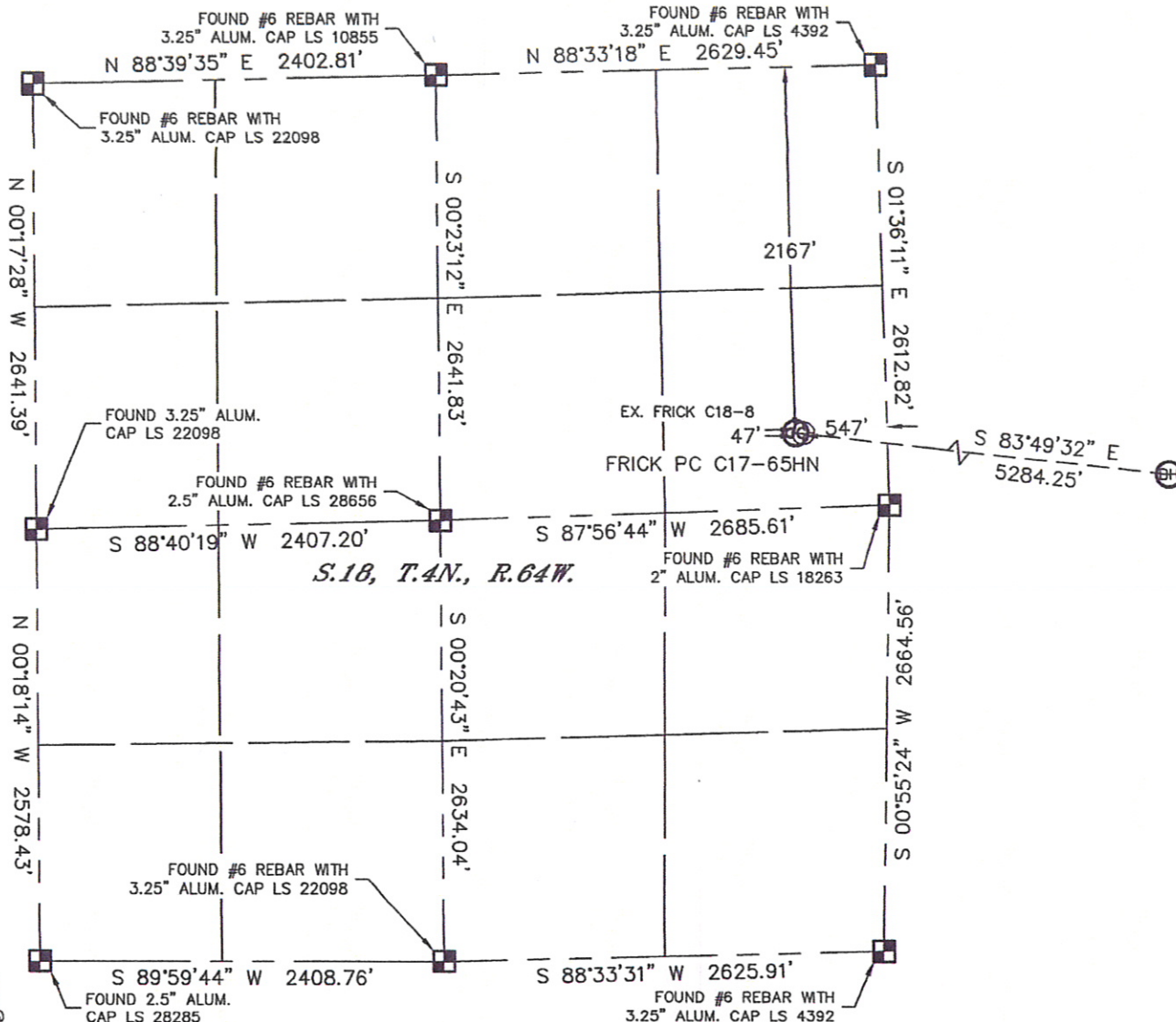


WELL LOCATION CERTIFICATE

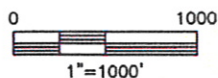
SECTION: 18
TOWNSHIP: 4N
RANGE: 64W

THIS MAP DOES NOT REPRESENT A BOUNDARY SURVEY



In accordance with a request from ERIK VAN DECAR with Noble Energy Inc. Lat40°, LLC has determined the surface location of the FRICK PC C17-65HN to be 2167' from the NORTH line and 547' from the EAST line as measured at right angles from the section lines of Section 18, Township 4 North, Range 64 West and the bottom hole to be 2465' from the SOUTH line and 535' from the EAST line as measured at right angles from the section lines of Section 17, Township 4 North, Range 64 West of the Sixth Principal Meridian, County of Weld, State of Colorado.

I hereby state that this Well Location Certificate was prepared by me, or under my direct supervision, that the fieldwork was completed on 12/8/10, for and on behalf of Noble Energy Inc. That this is not a Land Survey Plat or an Improvement Survey Plat, and that it is not to be relied upon for establishment of fence, building, or other future improvement lines.



NOTE:

- 1) Bearings shown are Grid Bearings of the Colorado State Plane Coordinate System, North Zone, North American Datum 1983/2007. The lineal dimensions as contained herein are based upon the "U.S. Survey Foot."
- 2) Ground elevations are based on an observed GPS elevation (NAVD 1988 DATUM).
- 3) NEAREST EXISTING WELL: FRICK C18-8 47'
- 4) IMPROVEMENTS: See LOCATION DRAWING for all visible improvements within 400' of disturbed area.
- 5) SURFACE USE: PASTURE
- 6) INSTRUMENT OPERATOR: BRIAN BRINKMAN

SURFACE LOCATION
LATITUDE: 40.31365°N
LONGITUDE: 104.58583°W
PDOP: 1.3
ELEV: 4758
1/4, 1/4: SE1/4NE1/4
NEAREST PROPERTY LINE: 215' EAST

BOTTOM HOLE
LATITUDE: 40.31194°N
LONGITUDE: 104.56702°W

NOTE

According to Colorado law, you must commence any legal action based upon any defect in this W.L.C. within three years after you discover such defect. In no event, may any action based upon any defect in this survey be commenced more than ten years after the date of the certificate shown hereon. (13-80-105 C.R.S.)

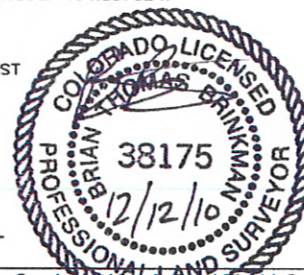
LEGEND

- = ALIQUOT MONUMENT AS DESCRIBED
- = CALCULATED POSITION

SHEET 1 OF 2

Brian T. Brinkman—On behalf of Lat40°, LLC
Colorado Licensed Professional
Land Surveyor No. 38175

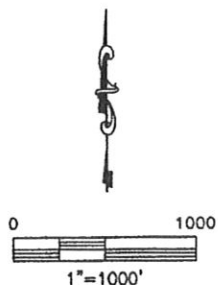
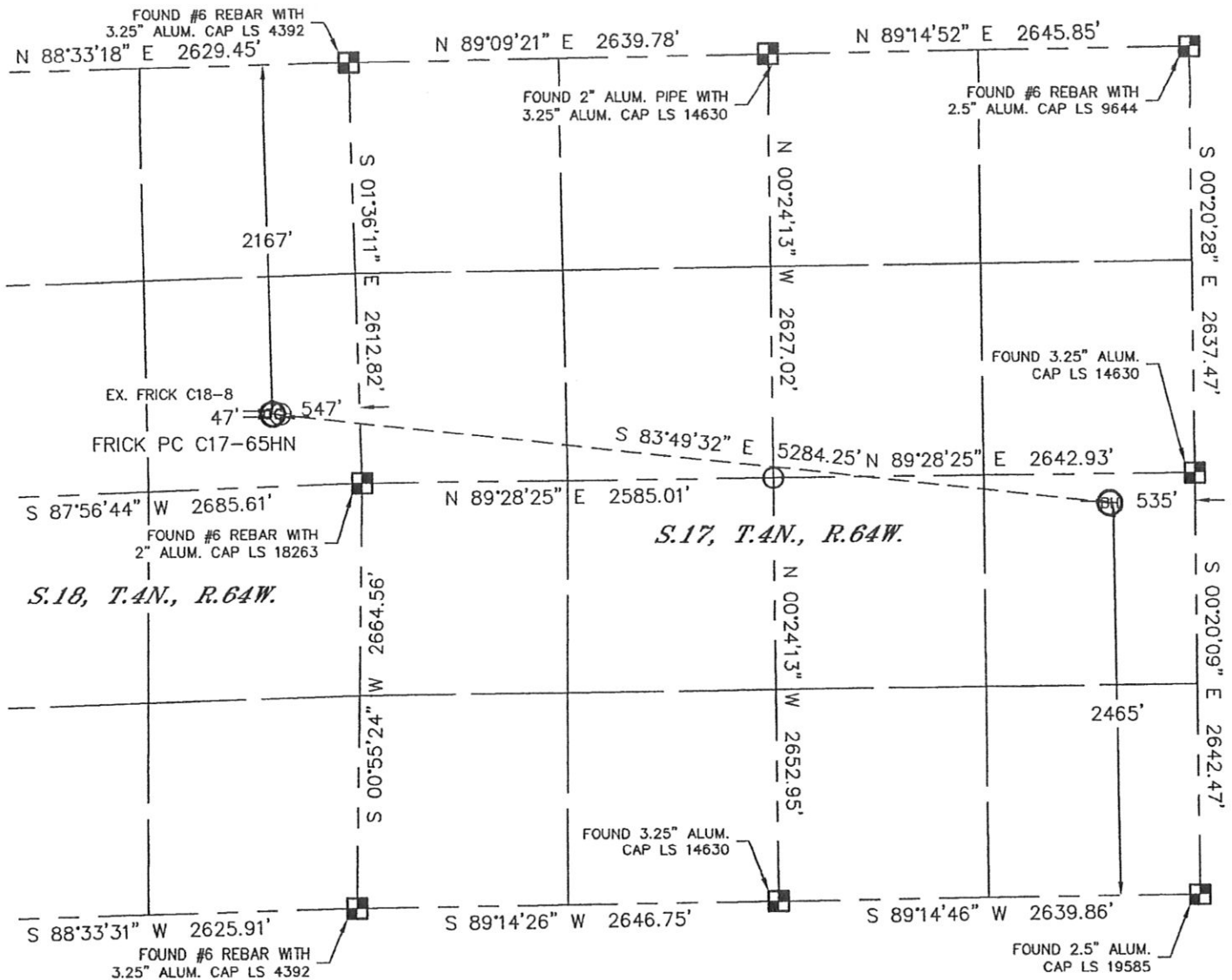
PROJECT#: 2010161



WELL LOCATION CERTIFICATE



THIS MAP DOES NOT REPRESENT A BOUNDARY SURVEY

SECTION: 18
TOWNSHIP: 4N
RANGE: 64W



NOTE
According to Colorado law, you must commence any legal action based upon any defect in this W.L.C. within three years after you discover such defect. In no event, may any action based upon any defect in this survey be commenced more than ten years after the date of the certificate shown hereon. (13-80-105 C.R.S.)

LEGEND

-  = ALIQUOT MONUMENT AS DESCRIBED
-  = CALCULATED POSITION



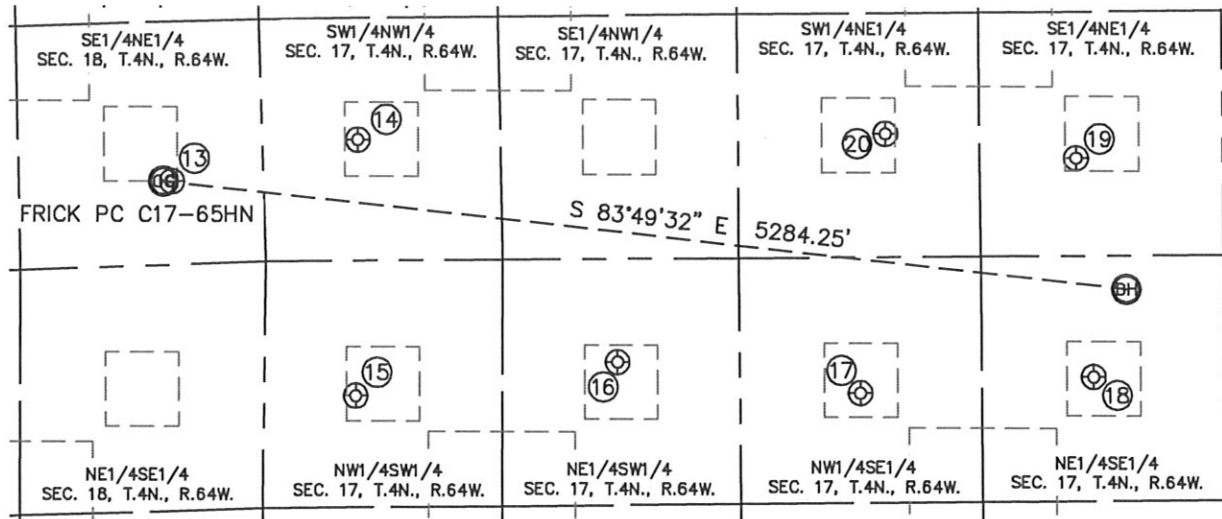
SHEET 2 of 2

Brian T. Brinkman—On behalf of Lat40°, LLC
Colorado Licensed Professional
Land Surveyor No. 38175 PROJECT#: 2010161

SITE SKETCH

FRICK PC C17-65HN

SECTION: 18
TOWNSHIP: 4N
RANGE: 64W



⑬
FRICK C18-8
SE1/4NE1/4
2168' FNL
500' FEL
LAT-40.31365°N
LONG-104.58586°W
PDOP: 2.2
ELEV: 4757

⑭
SANDY HILL FARMS C17-5
SW1/4NW1/4
1963' FNL
520' FWL
LAT-40.31424°N
LONG-104.58202°W
PDOP: 1.6
ELEV: 4748

⑮
UPRR OCOMA C17-12
NW1/4SW1/4
1933' FSL
500' FWL
LAT-40.31045°N
LONG-104.58212°W
PDOP: 2.3
ELEV: 4747

⑯
OCOMA C17-11
NE1/4SW1/4
2099' FSL
1927' FWL
LAT-40.31092°N
LONG-104.57698°W
PDOP: 1.8
ELEV: 4718

⑰
OCOMA C17-10
NW1/4SE1/4
1918' FSL
1984' FEL
LAT-40.31043°N
LONG-104.57222°W
PDOP: 2.1
ELEV: 4708

⑱
OCOMA C17-9
NE1/4SE1/4
1993' FSL
717' FEL
LAT-40.31065°N
LONG-104.56768°W
PDOP: 3.3
ELEV: 4700

⑲
HARLESS PM C17-8
SE1/4NE1/4
2107' FNL
801' FEL
LAT-40.31389°N
LONG-104.56796°W
PDOP: 3.1
ELEV: 4705

⑳
CPC-HARLESS 17-2
SW1/4NE1/4
1965' FNL
1836' FEL
LAT-40.31427°N
LONG-104.57167°W
PDOP: 4.0
ELEV: 4724

