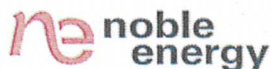


1625 Broadway  
Suite 2000  
Denver, CO 80202  
  
Tel: 303.228.4000  
Fax: 303.228.4280  
www.nobleenergyinc.com



March 14, 2011

Colorado Oil and Gas Conservation Commission  
The Chancery Building  
1120 Lincoln Street, Suite 801  
Denver, CO 80203

Attn: Mr. David Neslin, Director

RE: FRICK C17-79HN  
Niobrara New Drill  
Township 4 North, Range 64 West, 6th P.M.  
Section 18: SE/4NE/4: 2166' FNL & 570' FEL (Surface Location)  
Section 17: SW/4NW/4: 1438' FNL & 74' FWL (Beginning of Lateral)  
Section 8: NW/4SW/4: 2140' FSL & 75' FWL (End of Lateral)  
Weld County, Colorado

Mr. Neslin:

Noble Energy, Inc. ("NEI") is planning to drill the captioned boundary well in accordance with the provisions of COGCC Rule 318A.e.

NEI's proposed wellbore spacing unit consists of the E2SE of Section 7, W2SW of Section 8, W2NW of Section 17 and the E2NE OF Section 18, T4N, R64W, creating a 320-acre wellbore spacing unit for the Niobrara formation. NEI is not the only owner within the proposed wellbore spacing unit and as such provided notice to the remaining owner(s) within said proposed spacing unit as required under COGCC Rule 318A.e(6). Copies of the required notice letter(s) is/are on file at the NEI offices. The required twenty (20) day notice period has elapsed absent the receipt by NEI of an objection to said proposal by the owner(s) within the proposed spacing unit for this well.

Enclosed are copies of the following documents to assist you in your review and approval of NEI's proposed APD for the captioned well:

- Map illustrating the proposed wellbore spacing unit..
- Plat illustrating proposed wellbore spacing unit on existing location plat.

Thank you for your attention to the enclosed. NEI respectfully requests that the COGCC review the enclosed information and approve the Application for Permit to Drill the captioned well.

Sincerely,

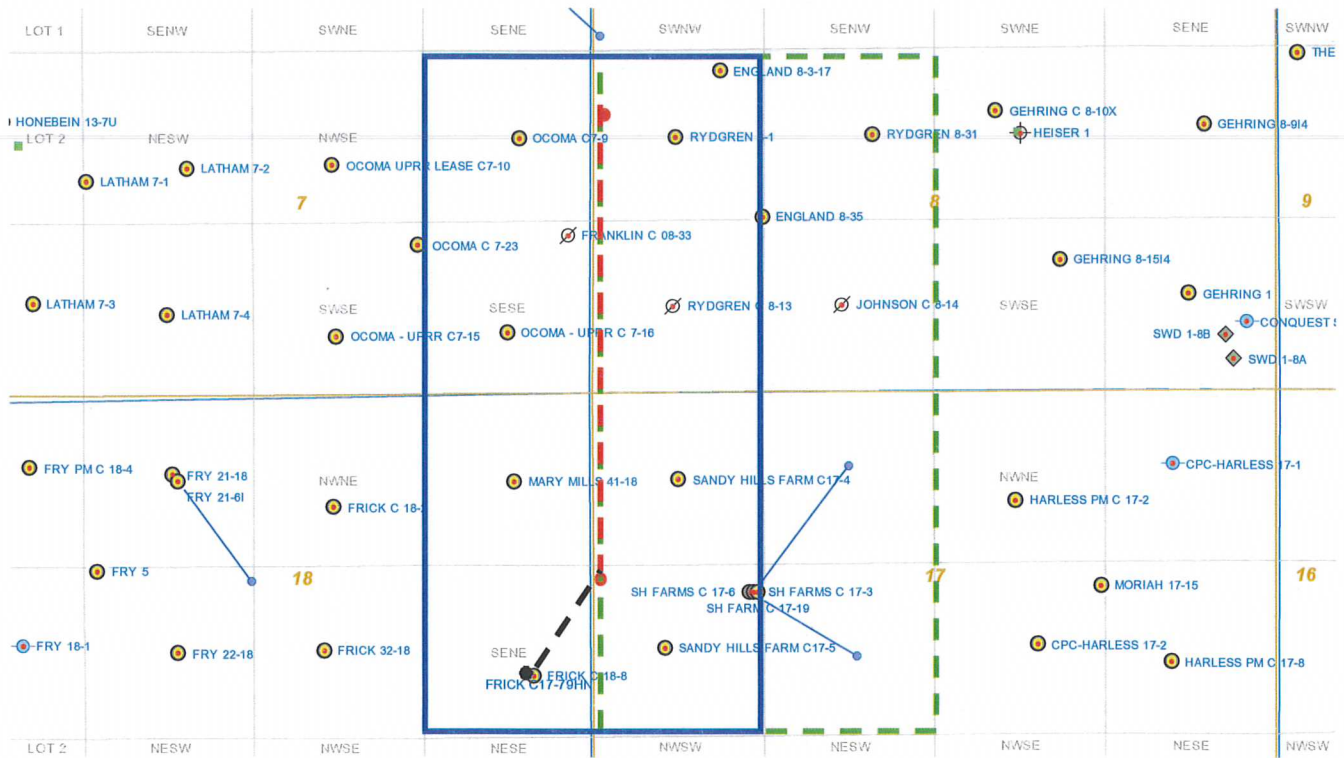
A handwritten signature in blue ink that reads 'Mari Clark'.

Mari Clark  
Regulatory Analyst II  
Noble Energy Inc.

# FRICK C17-79HN

## Proposed Spacing Unit – Noble Energy, Inc

E/2SE/4 SECTION 7, T4N, R64W  
 E/2NE/4 SECTION 18, T4N, R64W  
 W/2SW/4 SECTION 8, T4N, R64W  
 W/2NW/4 SECTION 17, T4N, R64W



### Legend



Proposed 320 acre spacing unit



Bottom Hole Location



Bottom Hole Located NW/4 OF SECTION 17, SW/4 OF SECTION 8

The governmental ¼ Section has less than 8 bottom hole wells producing from the Codell, Niobrara, and J-Sand formations.

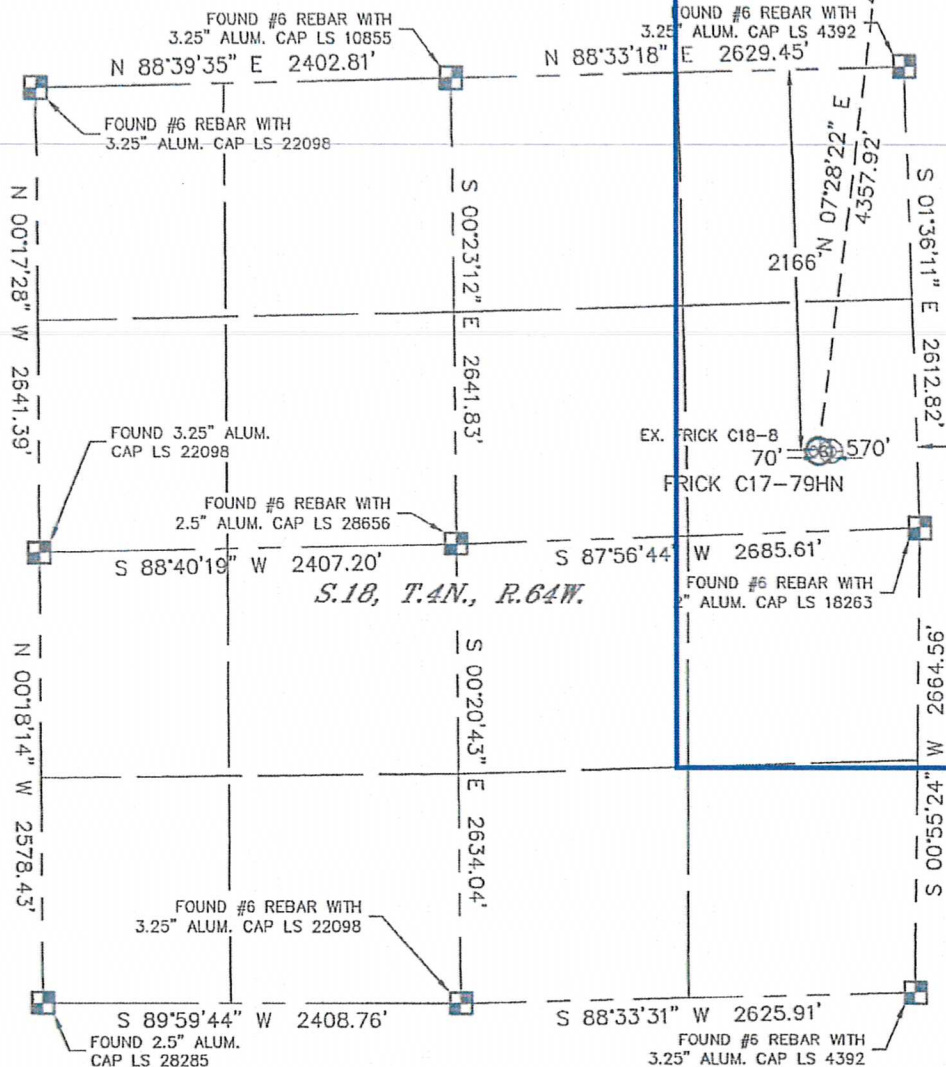
# PROPOSED SPACING UNIT

Lat40°, LLC 1635 Foxtrail Drive, Suite 325 Loveland, CO 80538

## WELL LOCATION CERTIFICATE

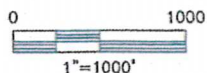
THIS MAP DOES NOT REPRESENT A BOUNDARY SURVEY

SECTION: 18  
TOWNSHIP: 4N  
RANGE: 64W



In accordance with a request from ERIK VAN DECAR with Noble Energy Inc., Lat40°, LLC has determined the surface location of the FRICK C17-79HN to be 2166' from the NORTH line and 570' from the EAST line as measured at right angles from the section lines of Section 18, Township 4 North, Range 64 West and the bottom hole to be 2140' from the SOUTH line and 75' from the WEST line as measured at right angles from the section lines of Section 8, Township 4 North, Range 64 West of the Sixth Principal Meridian, County of Weld, State of Colorado.

I hereby state that this Well Location Certificate was prepared by me, or under my direct supervision, that the fieldwork was completed on 12/8/10, for and on behalf of Noble Energy Inc.. That this is not a Land Survey Plat or an Improvement Survey Plat, and that it is not to be relied upon for establishment of fence, building, or other future improvement lines.



### NOTE:

- 1) Bearings shown are Grid Bearings of the Colorado State Plane Coordinate System, North Zone, North American Datum 1983/2007. The lineal dimensions as contained herein are based upon the "U.S. Survey Foot."
- 2) Ground elevations are based on an observed GPS elevation (NAVD 1988 DATUM).
- 3) NEAREST EXISTING WELL: FRICK C18-8 70'
- 4) IMPROVEMENTS: See LOCATION DRAWING for all visible improvements within 400' of disturbed area.
- 5) SURFACE USE: PASTURE
- 6) INSTRUMENT OPERATOR: BRIAN BRINKMAN

### NOTE

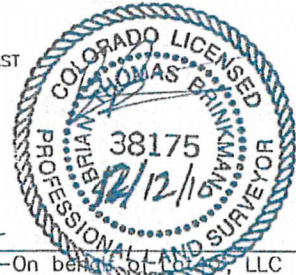
According to Colorado law, you must commence any legal action based upon any defect in this W.L.C. within three years after you discover such defect. In no event, may any action based upon any defect in this survey be commenced more than ten years after the date of the certificate shown hereon. (13-80-105 C.R.S.)

### LEGEND

- = ALIQUOT MONUMENT AS DESCRIBED
- = CALCULATED POSITION

SURFACE LOCATION  
LATITUDE: 40.31366°N  
LONGITUDE: 104.58591°W  
PDOP: 1.8  
ELEV: 4759  
1/4, 1/4: SE1/4NE1/4  
NEAREST PROPERTY LINE: 237' EAST

BOTTOM HOLE  
LATITUDE: 40.32550°N  
LONGITUDE: 104.58372°W



SHEET 1 of 2

Brian T. Brinkman—On behalf of Lat40°, LLC  
Colorado Licensed Professional  
Land Surveyor No. 38175 PROJECT#: 2010161

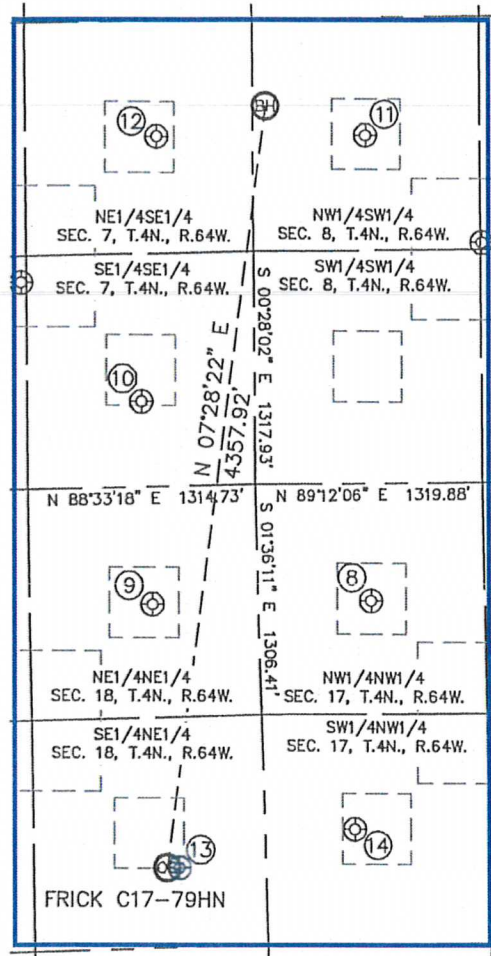


# PROPOSED SPACING UNIT

Lat40°, LLC 1635 Foxtrail Drive, Suite 325 Loveland, CO 80538

## SITE SKETCH FRICK C17-79HN

SECTION: 18  
TOWNSHIP: 4N  
RANGE: 64W



⑧

SANDY HILL FARMS C17-4  
NW1/4NW1/4  
666' FNL  
653' FWL  
LAT-40.31780°N  
LONG-104.58162°W  
PDOP: 1.7  
ELEV: 4766

⑨

MARY MILLS 41-18  
NE1/4NE1/4  
667' FNL  
614' FEL  
LAT-40.31777°N  
LONG-104.58617°W  
PDOP: 1.3  
ELEV: 4783

⑩

OCOMA C 7-16  
SE1/4SE1/4  
482' FSL  
656' FEL  
LAT-40.32092°N  
LONG-104.58636°W  
PDOP: 4.1  
ELEV: 4802

⑪

RYDGREN 8-1  
NW1/4SW1/4  
1970' FSL  
655' FWL  
LAT-40.32504°N  
LONG-104.58165°W  
PDOP: 1.7  
ELEV: 4820

⑫

OCOMA C7-9  
NE1/4SE1/4  
1980' FSL  
560' FEL  
LAT-40.32503°N  
LONG-104.58600°W  
PDOP: 2.7  
ELEV: 4844

⑬

FRICK C18-B  
SE1/4NE1/4  
2168' FNL  
500' FEL  
LAT-40.31365°N  
LONG-104.58566°W  
PDOP: 2.2  
ELEV: 4757

⑭

SANDY HILL FARMS C17-5  
SW1/4NW1/4  
1963' FNL  
520' FWL  
LAT-40.31424°N  
LONG-104.58202°W  
PDOP: 1.6  
ELEV: 4748

