



Bill Barrett Corp.

Garfield County, Colorado

MDP 15 Pad

GGU Federal 43D-29-691

Wellbore #1

Survey: Surveys

Standard Survey Report

25 October, 2010

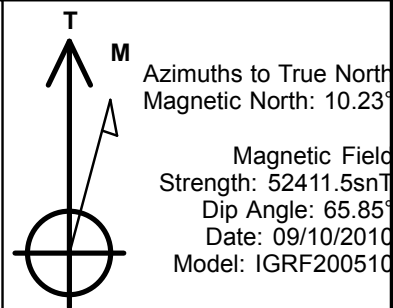
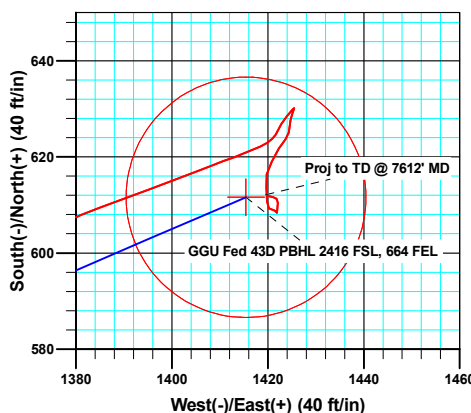
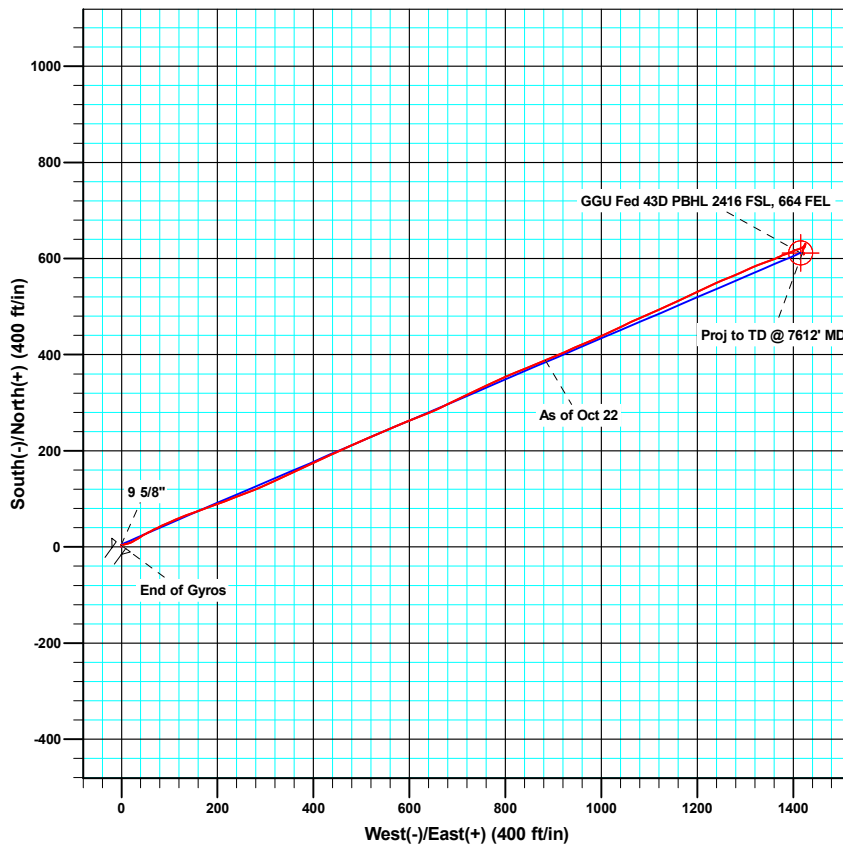
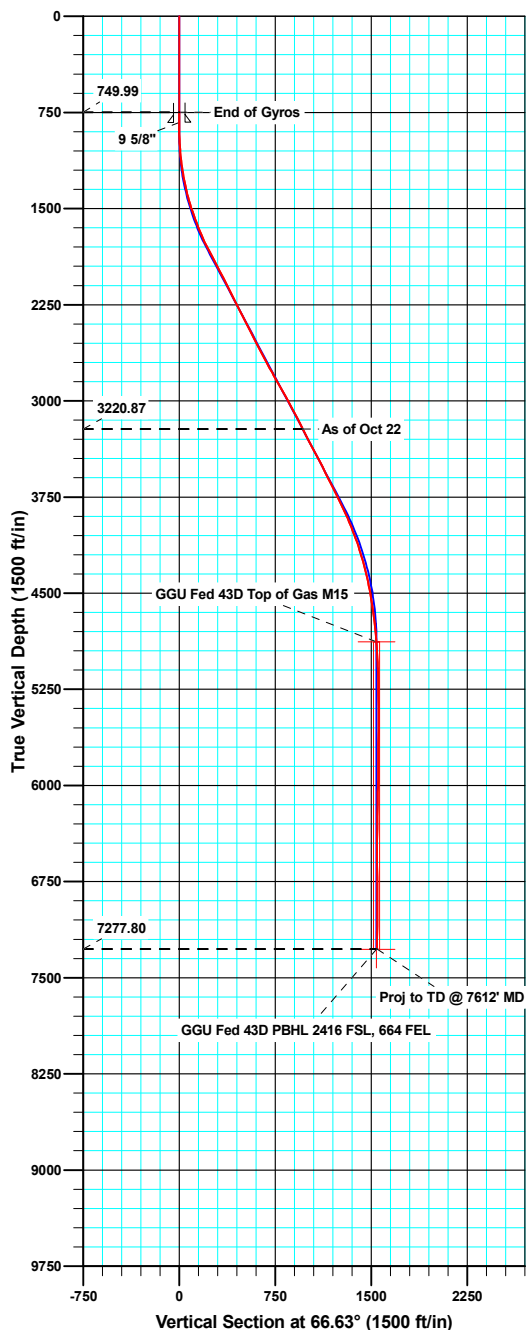




WELL DETAILS: GGU Federal 43D-29-691

Ground Level: 6030.20

North American Datum 1983 , US State Plane 1983 , Colorado Central Zone
 +N/-S +E/-W Northing Easting Latitude Longitude
 0.00 0.00 1612483.53 2414260.31 39° 29' 48.02 N 107° 34' 32.94 W



ANNOTATIONS

TVD	MD	Inc	Azi	+N/-S	+E/-W	Vsect	Departure	Annotation
3220.87	3440.00	26.80	67.90	388.17	883.77	965.24	966.38	As of Oct 22
7277.80	7612.00	0.40	306.60	612.20	1419.72	1546.09	1593.25	Proj to TD @ 7612' MD

Company:	Bill Barrett Corp.	Local Co-ordinate Reference:	Well GGU Federal 43D-29-691
Project:	Garfield County, Colorado	TVD Reference:	KB @ 6053.20ft
Site:	MDP 15 Pad	MD Reference:	KB @ 6053.20ft
Well:	GGU Federal 43D-29-691	North Reference:	True
Wellbore:	Wellbore #1	Survey Calculation Method:	Minimum Curvature
Design:	Wellbore #1	Database:	Compass VM

Project	Garfield County, Colorado		
Map System:	US State Plane 1983	System Datum:	Mean Sea Level
Geo Datum:	North American Datum 1983		
Map Zone:	Colorado Central Zone		

Site		MDP 15 Pad			
Site Position:		Northing:	1,612,474.12 usft	Latitude:	39° 29' 47.92 N
From:	Lat/Long	Easting:	2,414,257.84 usft	Longitude:	107° 34' 32.97 W
Position Uncertainty:	0.00 ft	Slot Radius:	1.10 ft	Grid Convergence:	-1.31 °

Well	GGU Federal 43D-29-691					
Well Position	+N/-S	0.00 ft	Northing:	1,612,483.53 usft	Latitude:	39° 29' 48.02 N
	+E/-W	0.00 ft	Easting:	2,414,260.31 usft	Longitude:	107° 34' 32.94 W
Position Uncertainty		0.00 ft	Wellhead Elevation:	ft	Ground Level:	6,030.20 ft

Wellbore	Wellbore #1				
Magnetics	Model Name	Sample Date	Declination (°)	Dip Angle (°)	Field Strength (nT)
	IGRF200510	09/10/10	10.24	65.85	52,411

Design	Wellbore #1				
Audit Notes:					
Version:	1.0	Phase:	ACTUAL	Tie On Depth:	0.00
Vertical Section:	Depth From (TVD) (ft)	+N/-S (ft)	+E/-W (ft)	Direction (°)	
	0.00	0.00	0.00	66.63	

Survey Program	Date	10/25/10			
From (ft)	To (ft)	Survey (Wellbore)	Tool Name	Description	
50.00	750.00	Gyro Surveys (Wellbore #1)	MWD	MWD - Standard	
875.00	7,612.00	Surveys (Wellbore #1)	MWD	MWD - Standard	

Survey										
Measured Depth (ft)	Inclination (°)	Azimuth (°)	Vertical Depth (ft)	+N/-S (ft)	+E/-W (ft)	Vertical Section (ft)	Dogleg Rate (°/100ft)	Build Rate (°/100ft)	Turn Rate (°/100ft)	
750.00	0.19	328.90	749.99	3.41	-1.01	0.43	0.00	0.00	0.00	
828.80	0.20	36.08	828.79	3.64	-0.99	0.53	0.28	0.02	85.26	
9 5/8"										
875.00	0.30	56.10	874.99	3.77	-0.84	0.72	0.28	0.21	43.32	
967.00	2.20	87.70	966.96	3.98	1.12	2.61	2.12	2.07	34.35	
1,062.00	5.10	72.00	1,061.76	5.36	6.96	8.51	3.20	3.05	-16.53	
1,157.00	7.60	73.90	1,156.17	8.40	17.01	18.95	2.64	2.63	2.00	
1,252.00	10.10	55.50	1,250.05	14.87	29.92	33.36	3.94	2.63	-19.37	
1,347.00	12.90	61.00	1,343.14	24.73	46.06	52.09	3.16	2.95	5.79	
1,443.00	16.00	63.80	1,436.09	35.77	67.31	75.98	3.31	3.23	2.92	

Company:	Bill Barrett Corp.	Local Co-ordinate Reference:	Well GGU Federal 43D-29-691
Project:	Garfield County, Colorado	TVD Reference:	KB @ 6053.20ft
Site:	MDP 15 Pad	MD Reference:	KB @ 6053.20ft
Well:	GGU Federal 43D-29-691	North Reference:	True
Wellbore:	Wellbore #1	Survey Calculation Method:	Minimum Curvature
Design:	Wellbore #1	Database:	Compass VM

Survey										
Measured Depth (ft)	Inclination (°)	Azimuth (°)	Vertical Depth (ft)	+N/-S (ft)	+E/-W (ft)	Vertical Section (ft)	Dogleg Rate (°/100ft)	Build Rate (°/100ft)	Turn Rate (°/100ft)	
1,538.00	18.70	64.90	1,526.76	48.01	92.85	104.28	2.86	2.84	1.16	
1,633.00	21.10	68.60	1,616.09	60.71	122.57	136.60	2.85	2.53	3.89	
1,728.00	23.80	69.90	1,703.88	73.54	156.50	172.83	2.89	2.84	1.37	
1,823.00	26.70	70.10	1,789.79	87.40	194.58	213.28	3.05	3.05	0.21	
1,918.00	27.70	68.90	1,874.29	102.61	235.25	256.65	1.20	1.05	-1.26	
2,013.00	28.40	68.50	1,958.13	118.84	276.87	301.29	0.76	0.74	-0.42	
2,108.00	26.90	65.20	2,042.28	136.14	317.40	345.36	2.26	-1.58	-3.47	
2,203.00	26.80	64.80	2,127.04	154.27	356.29	388.25	0.22	-0.11	-0.42	
2,298.00	26.80	65.30	2,211.83	172.34	395.12	431.07	0.24	0.00	0.53	
2,393.00	26.30	64.70	2,296.82	190.28	433.61	473.51	0.60	-0.53	-0.63	
2,489.00	27.40	66.40	2,382.47	208.21	473.08	516.86	1.40	1.15	1.77	
2,583.00	27.00	66.00	2,466.07	225.55	512.39	559.83	0.47	-0.43	-0.43	
2,679.00	26.60	66.90	2,551.76	242.85	552.07	603.11	0.59	-0.42	0.94	
2,774.00	28.40	68.10	2,636.02	259.62	592.60	646.97	1.98	1.89	1.26	
2,869.00	28.10	68.60	2,719.71	276.21	634.39	691.91	0.40	-0.32	0.53	
2,964.00	29.60	63.00	2,802.93	295.03	676.14	737.70	3.25	1.58	-5.89	
3,059.00	29.90	64.50	2,885.41	315.88	718.41	784.77	0.84	0.32	1.58	
3,154.00	29.20	65.30	2,968.05	335.75	760.84	831.60	0.85	-0.74	0.84	
3,249.00	28.20	65.90	3,051.38	354.60	802.38	877.22	1.10	-1.05	0.63	
3,345.00	27.40	68.30	3,136.30	372.03	843.61	921.98	1.43	-0.83	2.50	
3,440.00	26.80	67.90	3,220.87	388.17	883.77	965.24	0.66	-0.63	-0.42	
3,535.00	27.20	66.10	3,305.52	405.03	923.46	1,008.37	0.96	0.42	-1.89	
3,630.00	28.50	67.20	3,389.51	422.61	964.21	1,052.74	1.47	1.37	1.16	
3,725.00	27.60	64.50	3,473.36	440.87	1,004.97	1,097.40	1.64	-0.95	-2.84	
3,820.00	25.80	64.40	3,558.23	459.27	1,043.48	1,140.05	1.90	-1.89	-0.11	
3,915.00	27.40	66.80	3,643.17	476.82	1,082.22	1,182.57	2.03	1.68	2.53	
4,010.00	26.60	65.60	3,727.82	494.22	1,121.68	1,225.70	1.02	-0.84	-1.26	
4,105.00	25.70	65.30	3,813.09	511.61	1,159.76	1,267.56	0.96	-0.95	-0.32	
4,200.00	24.80	65.00	3,899.01	528.64	1,196.54	1,308.07	0.96	-0.95	-0.32	
4,295.00	21.40	64.20	3,986.38	544.61	1,230.21	1,345.31	3.59	-3.58	-0.84	
4,390.00	20.00	69.00	4,075.25	557.98	1,260.98	1,378.86	2.31	-1.47	5.05	
4,485.00	18.10	65.90	4,165.05	569.82	1,289.62	1,409.86	2.27	-2.00	-3.26	
4,581.00	14.90	65.60	4,257.08	581.02	1,314.48	1,437.12	3.33	-3.33	-0.31	
4,676.00	13.90	69.80	4,349.10	590.00	1,336.32	1,460.72	1.52	-1.05	4.42	
4,771.00	11.80	69.40	4,441.72	597.36	1,356.12	1,481.82	2.21	-2.21	-0.42	
4,866.00	9.40	64.80	4,535.09	604.08	1,372.23	1,499.28	2.68	-2.53	-4.84	
4,961.00	7.30	70.50	4,629.08	609.40	1,384.94	1,513.06	2.37	-2.21	6.00	
5,056.00	6.50	69.10	4,723.39	613.33	1,395.66	1,524.45	0.86	-0.84	-1.47	
5,151.00	6.00	68.80	4,817.83	617.05	1,405.31	1,534.78	0.53	-0.53	-0.32	
5,246.00	3.80	70.10	4,912.47	619.91	1,412.90	1,542.89	2.32	-2.32	1.37	
5,341.00	3.40	64.80	5,007.29	622.19	1,418.41	1,548.85	0.55	-0.42	-5.58	
5,436.00	1.70	28.30	5,102.19	624.63	1,421.63	1,552.77	2.39	-1.79	-38.42	
5,531.00	1.40	29.90	5,197.16	626.87	1,422.87	1,554.80	0.32	-0.32	1.68	

Company:	Bill Barrett Corp.	Local Co-ordinate Reference:	Well GGU Federal 43D-29-691
Project:	Garfield County, Colorado	TVD Reference:	KB @ 6053.20ft
Site:	MDP 15 Pad	MD Reference:	KB @ 6053.20ft
Well:	GGU Federal 43D-29-691	North Reference:	True
Wellbore:	Wellbore #1	Survey Calculation Method:	Minimum Curvature
Design:	Wellbore #1	Database:	Compass VM

Survey										
Measured Depth (ft)	Inclination (°)	Azimuth (°)	Vertical Depth (ft)	+N/-S (ft)	+E/-W (ft)	Vertical Section (ft)	Dogleg Rate (°/100ft)	Build Rate (°/100ft)	Turn Rate (°/100ft)	
5,626.00	1.10	40.90	5,292.14	628.57	1,424.05	1,556.56	0.40	-0.32	11.58	
5,721.00	1.10	40.10	5,387.12	629.96	1,425.23	1,558.19	0.02	0.00	-0.84	
5,817.00	0.70	208.50	5,483.11	630.14	1,425.55	1,558.56	1.87	-0.42	175.42	
5,912.00	1.10	195.70	5,578.10	628.76	1,425.02	1,557.52	0.47	0.42	-13.47	
6,007.00	0.50	189.80	5,673.09	627.47	1,424.71	1,556.72	0.64	-0.63	-6.21	
6,102.00	0.80	186.30	5,768.09	626.40	1,424.56	1,556.17	0.32	0.32	-3.68	
6,197.00	0.80	190.90	5,863.08	625.09	1,424.36	1,555.47	0.07	0.00	4.84	
6,292.00	1.10	214.70	5,958.06	623.69	1,423.72	1,554.32	0.52	0.32	25.05	
6,387.00	1.80	215.20	6,053.03	621.72	1,422.34	1,552.27	0.74	0.74	0.53	
6,482.00	1.90	205.20	6,147.98	619.08	1,420.81	1,549.82	0.36	0.11	-10.53	
6,577.00	1.60	196.60	6,242.94	616.38	1,419.76	1,547.79	0.42	-0.32	-9.05	
6,673.00	1.80	167.80	6,338.90	613.62	1,419.70	1,546.63	0.90	0.21	-30.00	
6,768.00	1.70	186.80	6,433.86	610.77	1,419.84	1,545.64	0.62	-0.11	20.00	
6,863.00	0.70	98.50	6,528.84	609.28	1,420.25	1,545.42	1.91	-1.05	-92.95	
6,958.00	0.80	119.60	6,623.83	608.87	1,421.40	1,546.31	0.31	0.11	22.21	
7,053.00	0.20	189.10	6,718.83	608.38	1,421.95	1,546.62	0.79	-0.63	73.16	
7,148.00	1.00	3.40	6,813.82	609.04	1,421.98	1,546.91	1.26	0.84	183.47	
7,243.00	0.70	8.10	6,908.81	610.44	1,422.11	1,547.58	0.32	-0.32	4.95	
7,338.00	0.50	311.40	7,003.81	611.29	1,421.88	1,547.71	0.63	-0.21	-59.68	
7,433.00	0.50	280.60	7,098.81	611.64	1,421.16	1,547.19	0.28	0.00	-32.42	
7,528.00	0.60	287.50	7,193.80	611.87	1,420.28	1,546.47	0.13	0.11	7.26	
7,567.00	0.40	306.60	7,232.80	612.01	1,419.97	1,546.25	0.66	-0.51	48.97	
7,612.00	0.40	306.60	7,277.80	612.20	1,419.72	1,546.09	0.00	0.00	0.00	

Casing Points					
Measured Depth (ft)	Vertical Depth (ft)	Name		Casing Diameter (ft)	Hole Diameter (ft)
828.80	828.79	9 5/8"		0.80	1.02

Survey Annotations					
Measured Depth (ft)	Vertical Depth (ft)	Local Coordinates		Comment	
		+N/-S (ft)	+E/-W (ft)		
3,440.00	3,220.87	388.17	883.77	As of Oct 22	
7,612.00	7,277.80	612.20	1,419.72	Proj to TD @ 7612' MD	

Checked By: _____ Approved By: _____ Date: _____