

**EOG RESOURCES, INC.**  
**IGO CREEK #27-35H**  
**LOCATED IN WELD COUNTY, COLORADO**  
**SECTION 35, T9N, R59W, 6th P.M.**

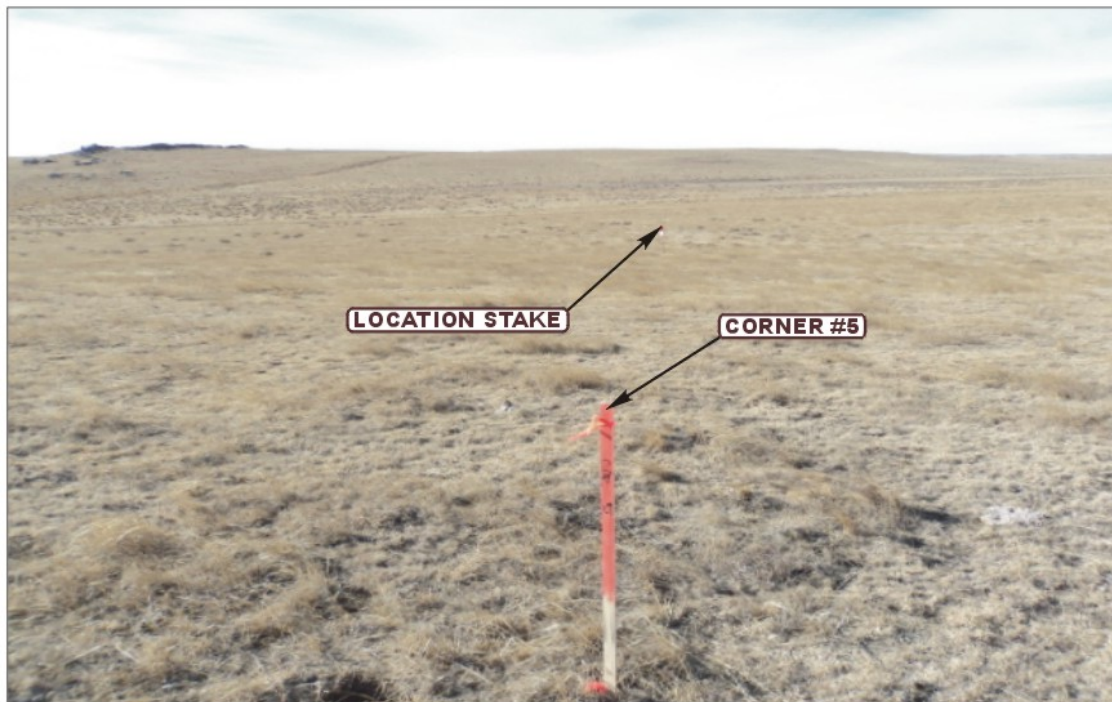


PHOTO: VIEW FROM CORNER #5 TO LOCATION STAKE

CAMERA ANGLE: WESTERLY



PHOTO: VIEW FROM BEGINNING OF PROPOSED ACCESS

CAMERA ANGLE: EASTERLY



- Since 1964 -

**UELS**

Uintah Engineering & Land Surveying  
85 South 200 East Vernal, Utah 84078  
(435) 789-1017 \* FAX (435) 789-1813

**LOCATION PHOTOS**

**01 19 11**  
MONTH DAY YEAR

PHOTO  
**P1**

TAKEN BY: G.M.

DRAWN BY: S.F.

REVISED: 01-25-11

**EOG RESOURCES, INC.**  
**IGO CREEK #27-35H**  
**LOCATED IN WELD COUNTY, COLORADO**  
**SECTION 35, T9N, R59W, 6th P.M.**

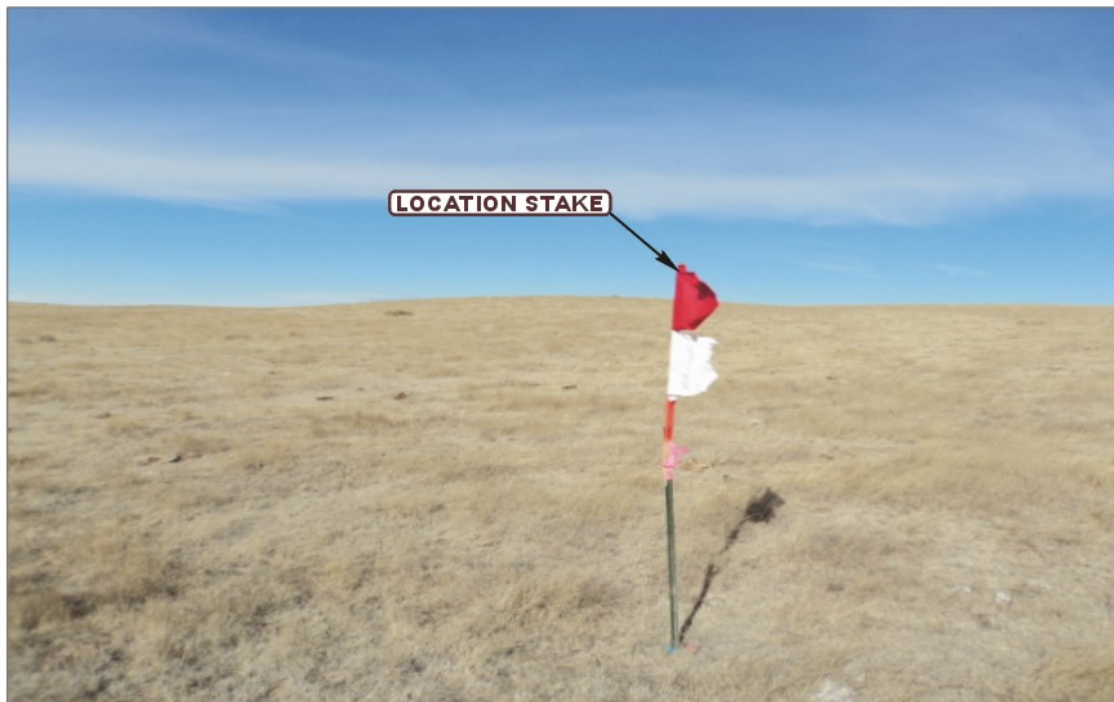


PHOTO: VIEW OF LOCATION STAKE

CAMERA ANGLE: NORTHERLY



PHOTO: VIEW OF LOCATION STAKE

CAMERA ANGLE: EASTERLY



**UELS** Uintah Engineering & Land Surveying  
85 South 200 East Vernal, Utah 84078  
(435) 789-1017 \* FAX (435) 789-1813

**LOCATION PHOTOS**

**01 19 11**  
MONTH DAY YEAR

**PHOTO**  
**P2**

TAKEN BY: G.M.

DRAWN BY: S.F.

REVISED: 00-00-00



**EOG RESOURCES, INC.**  
**IGO CREEK #27-35H**  
**LOCATED IN WELD COUNTY, COLORADO**  
**SECTION 35, T9N, R59W, 6th P.M.**



PHOTO: VIEW OF LOCATION STAKE

CAMERA ANGLE: SOUTHERLY

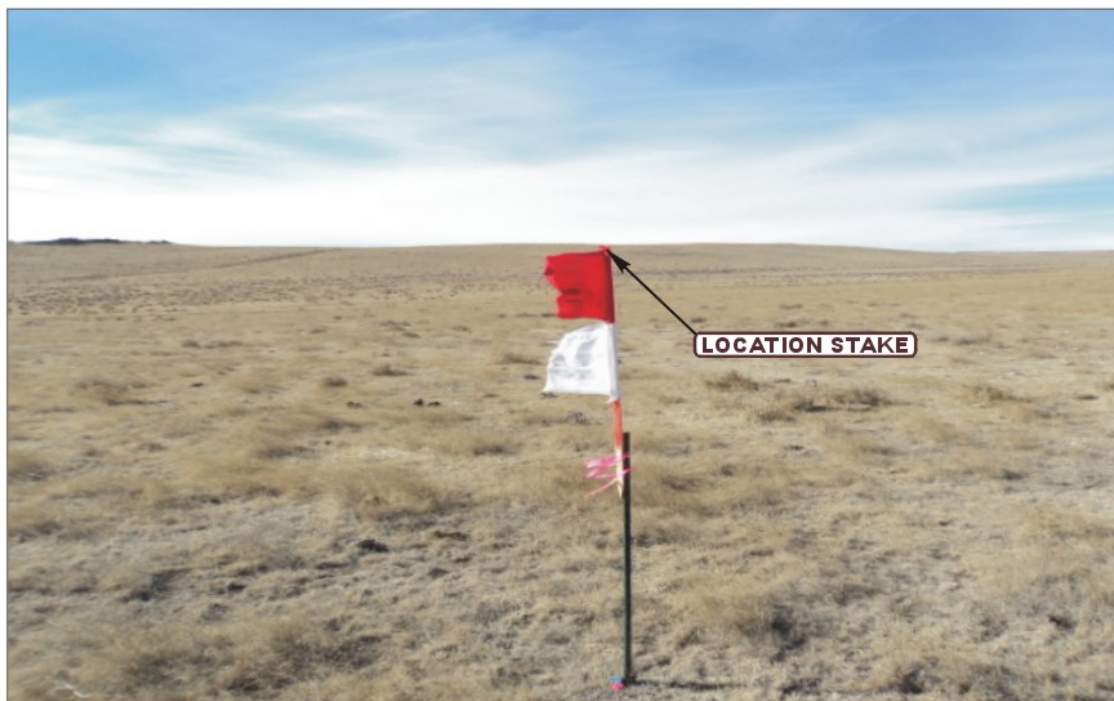


PHOTO: VIEW OF LOCATION STAKE

CAMERA ANGLE: WESTERLY



**UELS**

Uintah Engineering & Land Surveying  
85 South 200 East Vernal, Utah 84078  
(435) 789-1017 \* FAX (435) 789-1813

**LOCATION PHOTOS**

**01** **19** **11**  
MONTH DAY YEAR

PHOTO  
**P3**

TAKEN BY: G.M.

DRAWN BY: S.F.

REVISED: 00-00-00