

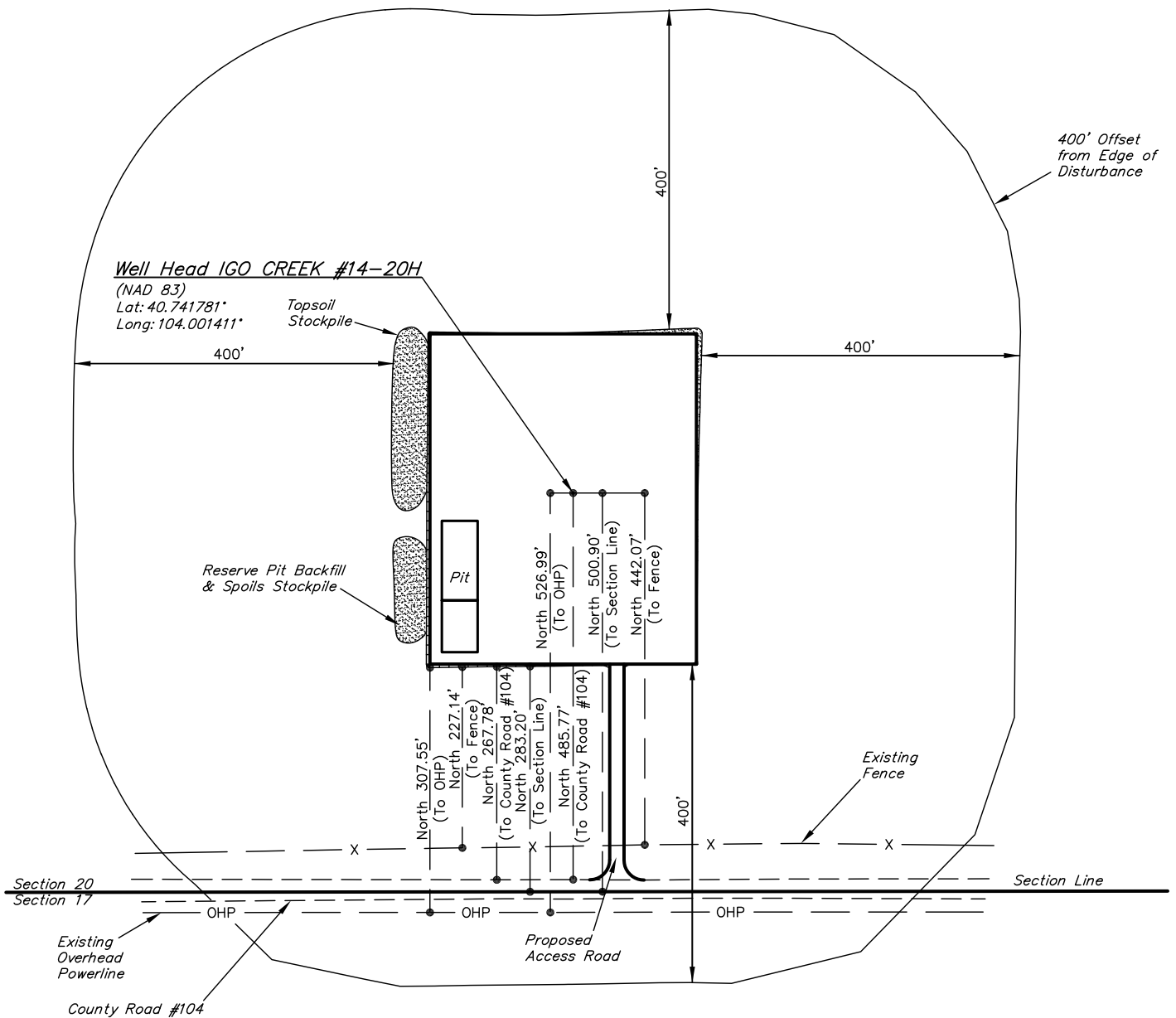
# EOG RESOURCES, INC.

## ADDENDUM TO LEGAL PLAT FOR

IGO CREEK #14-20H  
SECTION 20, T9N, R59W, 6th P.M.  
501' FNL 2445' FEL



SCALE: 1" = 200'  
DATE: 12-23-10  
DRAWN BY: M.D.



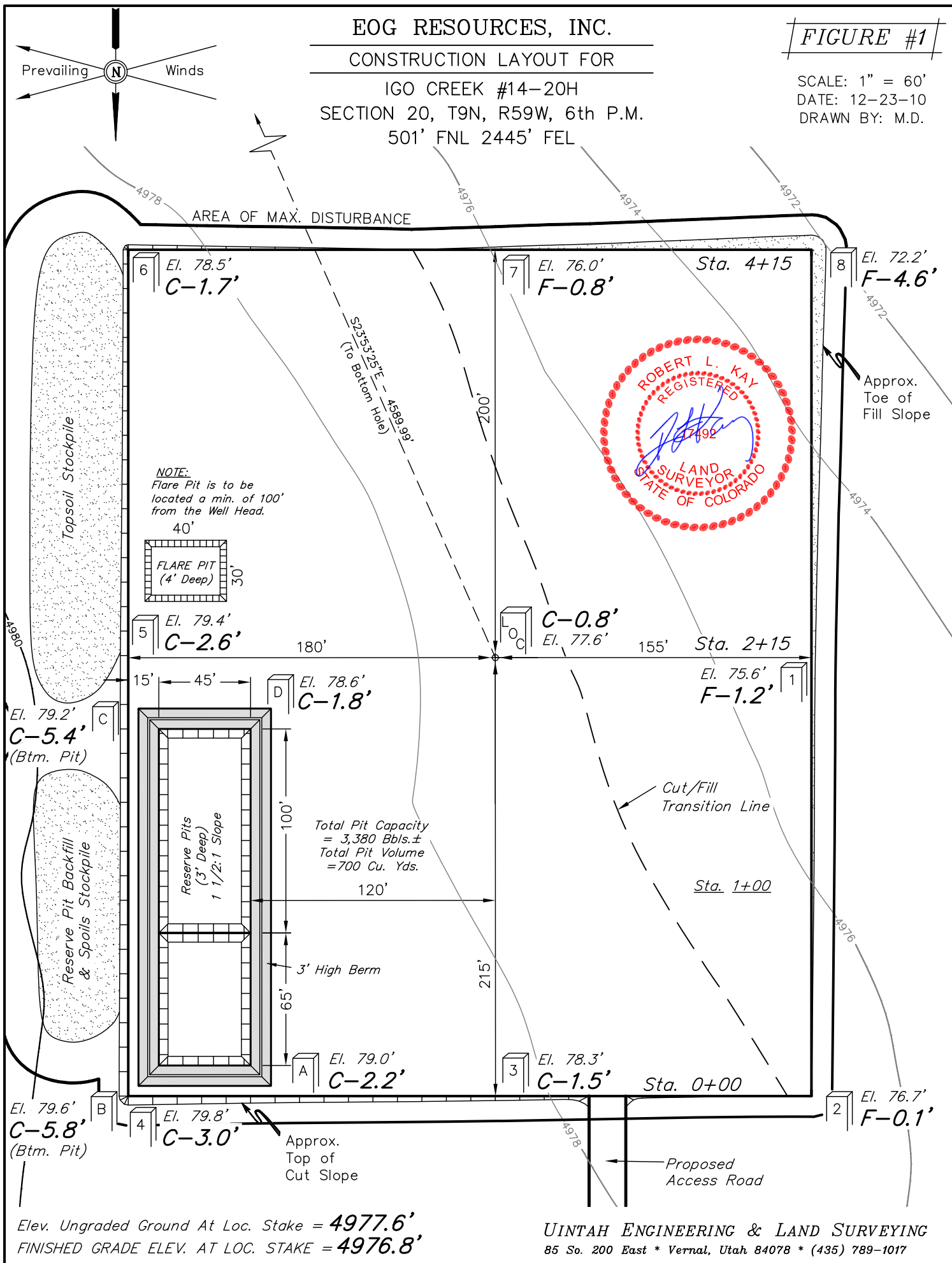
# EOG RESOURCES, INC.

## CONSTRUCTION LAYOUT FOR

IGO CREEK #14-20H  
SECTION 20, T9N, R59W, 6th P.M.  
501' FNL 2445' FEL

FIGURE #1

SCALE: 1" = 60'  
DATE: 12-23-10  
DRAWN BY: M.D.



# EOG RESOURCES, INC.

FIGURE #2

## CONSTRUCTION LAYOUT CROSS SECTION FOR

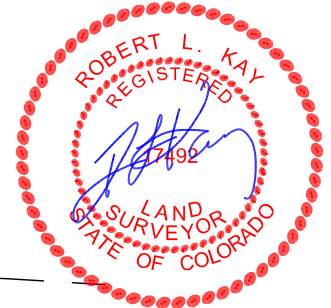
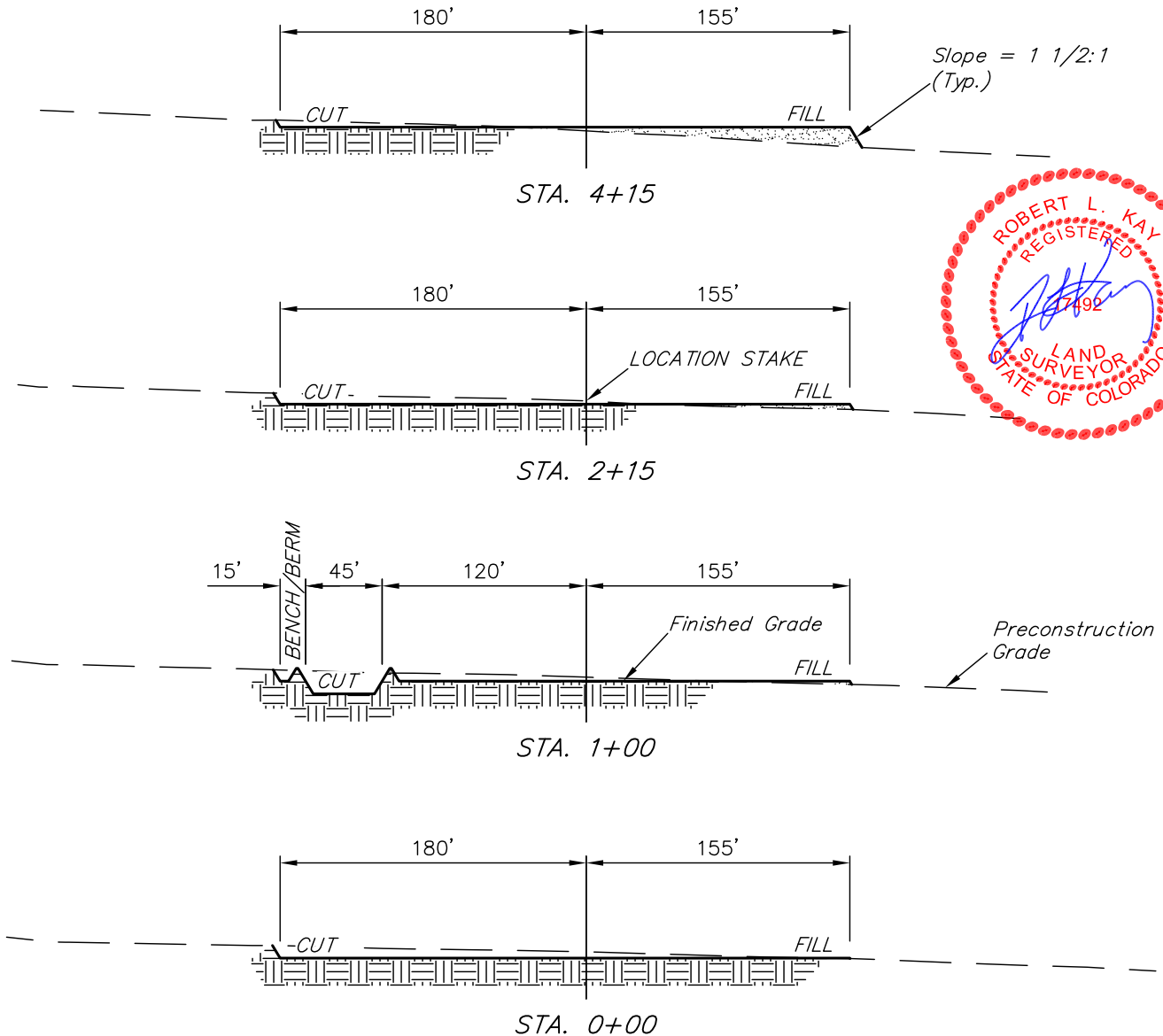
IGO CREEK #14-20H

SECTION 20, T9N, R59W, 6th P.M.

501' FNL 2445' FEL

X-Section  
Scale  
1" = 100'

DATE: 12-23-10  
DRAWN BY: M.D.



### NOTE:

Topsoil should not be Stripped Below Finished Grade on Substructure Area.

APPROXIMATE ACREAGES  
WELL SITE DISTURBANCE = ± 4.153 ACRES  
ACCESS ROAD DISTURBANCE = ± 0.176 ACRES  
TOTAL = ± 4.329 ACRES

\* NOTE:  
FILL QUANTITY INCLUDES 5% FOR COMPACTION

### APPROXIMATE YARDAGES

(6") Topsoil Stripping = 2,690 Cu. Yds.  
Remaining Location = 3,580 Cu. Yds.  
TOTAL CUT = 6,270 CU.YDS.  
FILL = 3,230 CU.YDS.

EXCESS MATERIAL = 3,040 Cu. Yds.  
Topsoil & Pit Backfill = 3,040 Cu. Yds.  
(1/2 Pit Vol.)  
EXCESS UNBALANCE = 0 Cu. Yds.  
(After Interim Rehabilitation)

UINTAH ENGINEERING & LAND SURVEYING  
85 So. 200 East \* Vernal, Utah 84078 \* (435) 789-1017

# EOG RESOURCES, INC.

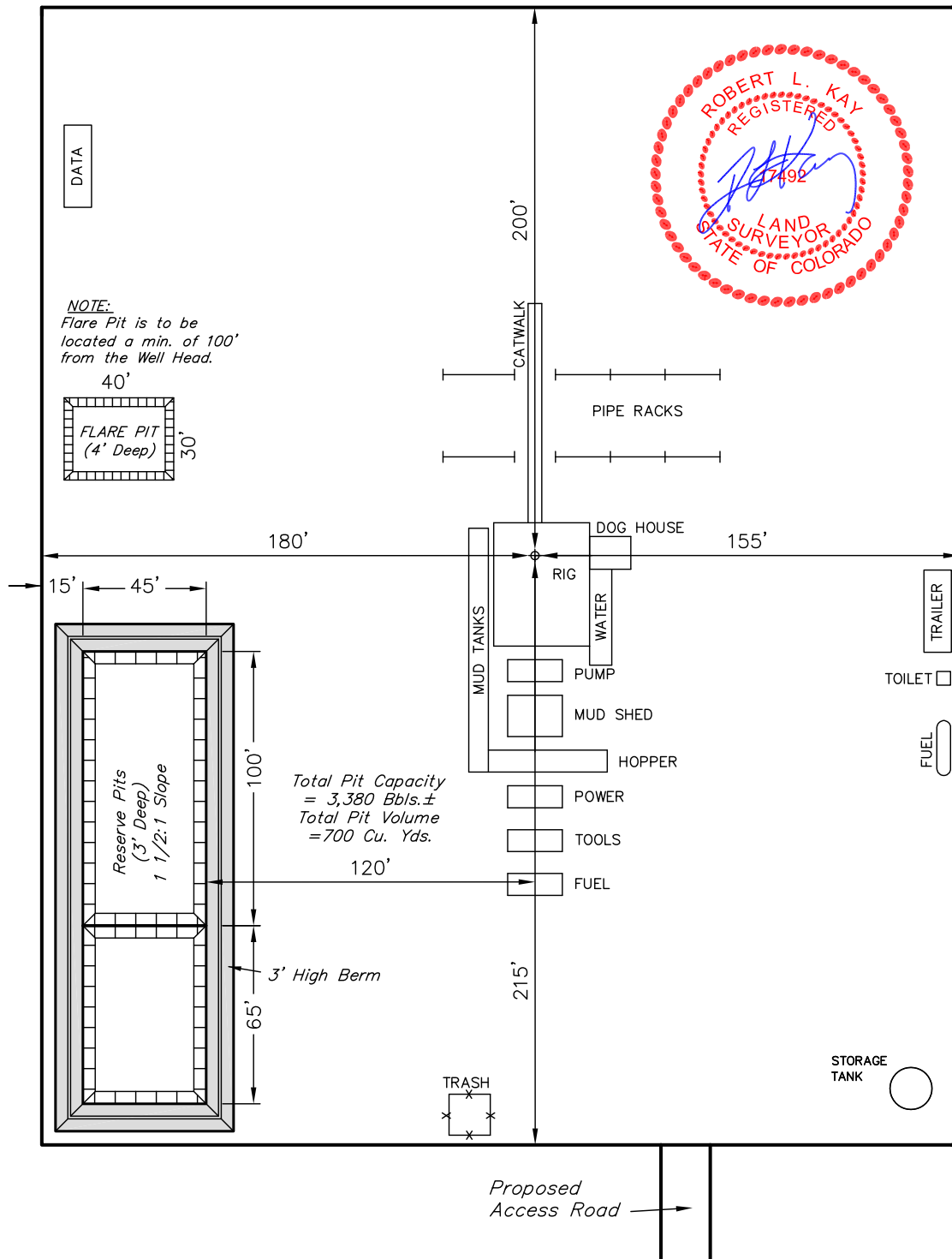
## TYPICAL RIG LAYOUT FOR

IGO CREEK #14-20H  
SECTION 20, T9N, R59W, 6th P.M.  
501' FNL 2445' FEL

FIGURE #3



SCALE: 1" = 60'  
DATE: 12-23-10  
DRAWN BY: M.D.

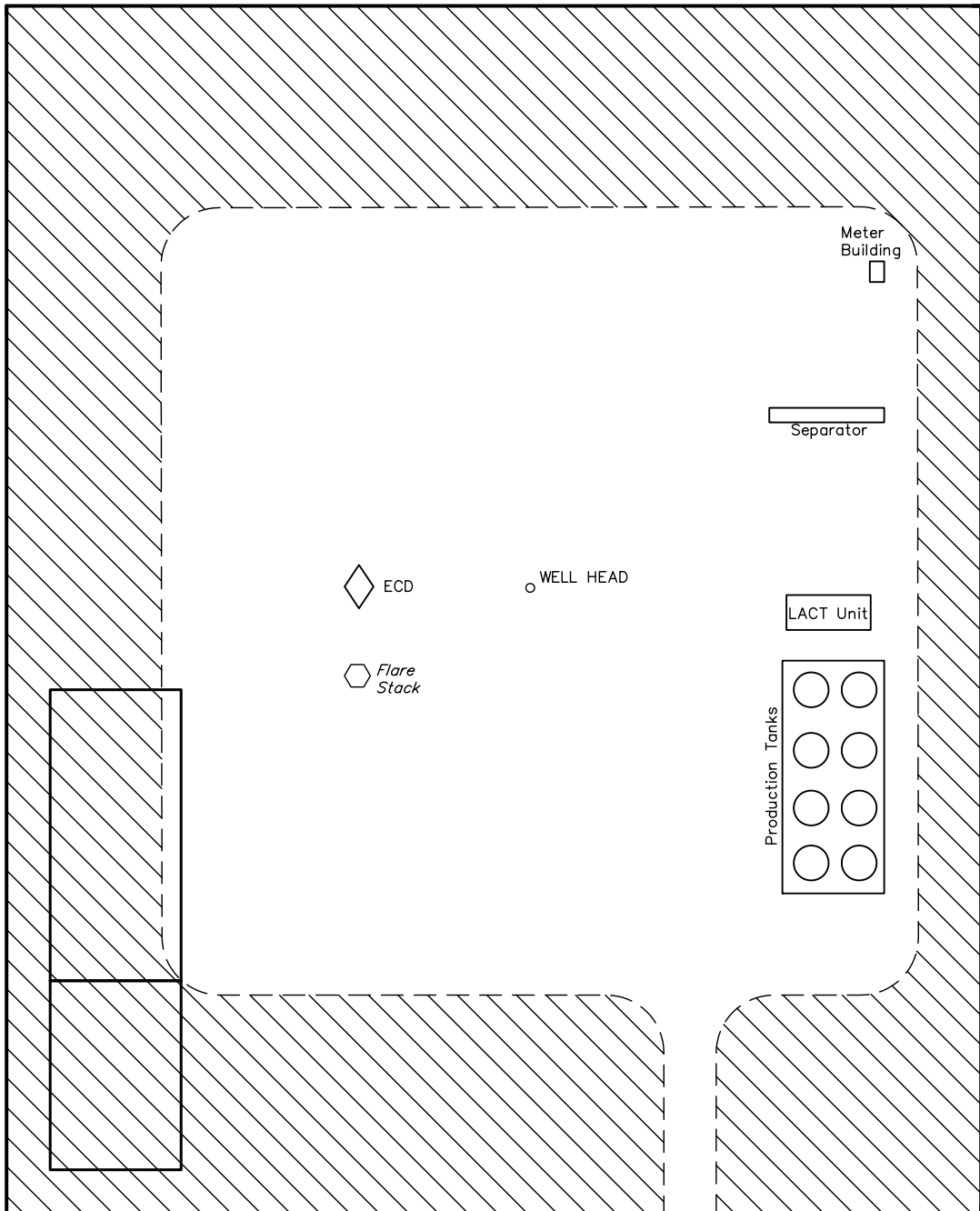
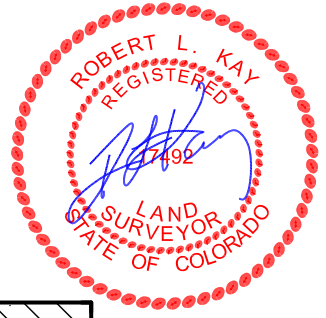




SCALE: 1" = 60'  
DATE: 12-23-10  
DRAWN BY: M.D.

EOG RESOURCES, INC.  
RECLAMATION DIAGRAM FOR  
IGO CREEK #14-20H  
SECTION 20, T9N, R59W, 6th P.M.  
501' FNL 2445' FEL

FIGURE #4



APPROXIMATE ACREAGES  
UN-RECLAIMED = ± 1.687 ACRES



# EOG RESOURCES, INC.

## LOCATION DRAWING FOR

IGO CREEK #14-20H  
SECTION 20, T9N, R59W, 6th P.M.  
501' FNL 2445' FEL

FIGURE #5

DATE: 12-23-10  
DRAWN BY: M.D.

NW Cor. Sec. 20  
UELS Alum. Cap,  
Lat: 40.743131°  
Long: 104.011500°

N12°30'W 28.85 Miles  
(To Railroad)

N89°55'40"E - 5239.00' (Meas.)

N70°27'E 8253.96'  
(To House)

Proposed Access  
Road

North 500.99'  
(To Property Line)  
North 485.99'  
(To County Road #104)  
North 527.00'  
(To OHP)

Section Line

Private Alum. Cap  
PLS #38044  
Lat: 40.743175°  
Long: 103.992600°

**Plasnik Land  
Company**



1/16 Section Line



SCALE

1/4 Section Line

1/16 Section Line

20

1/4 Section Line

S00°11'23"E - 5296.50' (Meas.)  
Section Line

SE Cor. Sec. 20  
Private Alum. Cap  
RLS #17492  
Lat: 40.728642°  
Long: 103.992503°

### PLANT COMMUNITY

- ☐ DISTURBED GRASSLAND
- ☐ NATIVE GRASSLAND
- ☐ SHRUB LAND
- ☐ PLAINS RIPARIAN
- ☐ MOUNTAIN RIPARIAN
- ☐ FOREST LAND
- ☐ WETLANDS AQUATIC
- ☐ ALPINE
- ☐ OTHER (Describe): \_\_\_\_\_

### CURRENT LAND USE

- CROP LAND: ☐ IRRIGATED ☐ DRY LAND ☐ IMPROVED PASTURE ☐ HAY MEADOW ☐ CRP
- NON-CROP LAND: ☐ RANGELAND ☐ TIMBER ☐ RECREATIONAL ☐ OTHER (Describe) \_\_\_\_\_
- SUBDIVIDED: ☐ INDUSTRIAL ☐ COMMERCIAL ☐ RESIDENTIAL \_\_\_\_\_

### FUTURE LAND USE

- CROP LAND: ☐ IRRIGATED ☐ DRY LAND ☐ IMPROVED PASTURE ☐ HAY MEADOW ☐ CRP
- NON-CROP LAND: ☐ RANGELAND ☐ TIMBER ☐ RECREATIONAL ☐ OTHER (Describe) \_\_\_\_\_
- SUBDIVIDED: ☐ INDUSTRIAL ☐ COMMERCIAL ☐ RESIDENTIAL \_\_\_\_\_