

**EOG RESOURCES, INC.**  
**IGO CREEK #14-20H**  
**LOCATED IN WELD COUNTY, COLORADO**  
**SECTION 20, T9N, R59W, 6th P.M.**

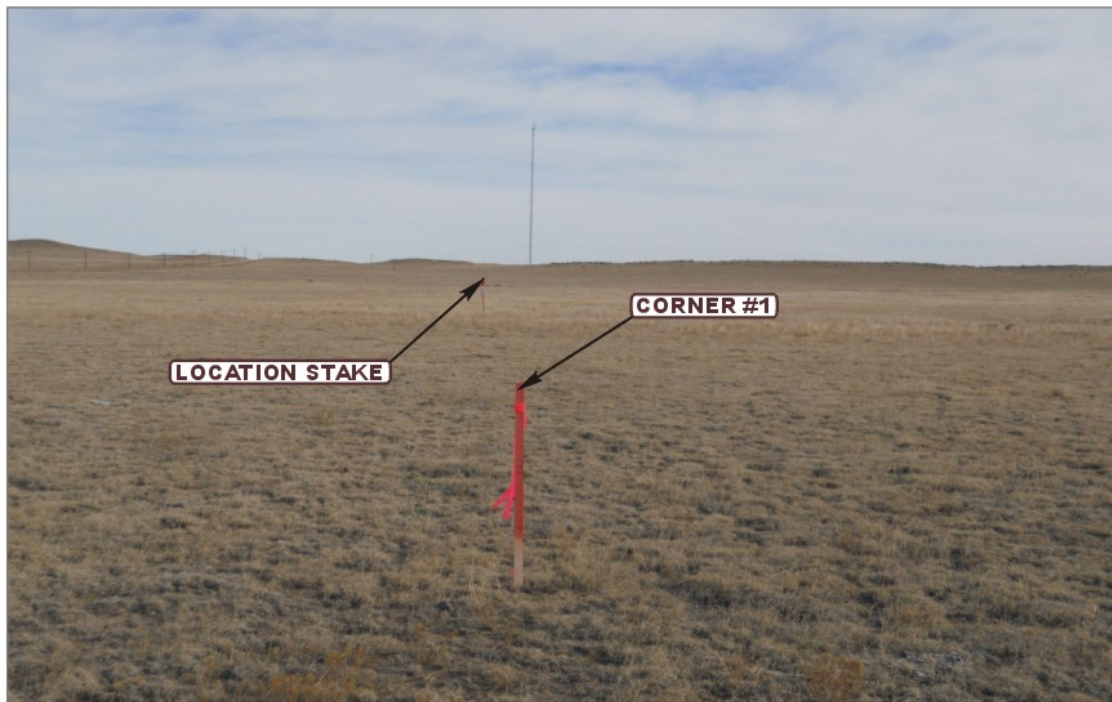


PHOTO: VIEW FROM CORNER #1 TO LOCATION STAKE

CAMERA ANGLE: EASTERLY



PHOTO: VIEW FROM BEGINNING OF PROPOSED ACCESS

CAMERA ANGLE: SOUTHERLY



- Since 1964 -

**UELS**

Uintah Engineering & Land Surveying  
85 South 200 East Vernal, Utah 84078  
(435) 789-1017 \* FAX (435) 789-1813

**LOCATION PHOTOS**

**12** **28** **10**  
MONTH DAY YEAR

TAKEN BY: B.B.

DRAWN BY: S.F.

REVISED: 00-00-00

PHOTO  
**P1**

**EOG RESOURCES, INC.**  
**IGO CREEK #14-20H**  
**LOCATED IN WELD COUNTY, COLORADO**  
**SECTION 20, T9N, R59W, 6th P.M.**



PHOTO: VIEW OF LOCATION STAKE

CAMERA ANGLE: NORTHERLY



PHOTO: VIEW OF LOCATION STAKE

CAMERA ANGLE: EASTERLY



**UELS** Uintah Engineering & Land Surveying  
85 South 200 East Vernal, Utah 84078  
(435) 789-1017 \* FAX (435) 789-1813

**LOCATION PHOTOS**

**12** **28** **10**  
MONTH DAY YEAR

TAKEN BY: B.B.

DRAWN BY: S.F.

REVISED: 00-00-00

PHOTO  
**P2**



**EOG RESOURCES, INC.**  
**IGO CREEK #14-20H**  
**LOCATED IN WELD COUNTY, COLORADO**  
**SECTION 20, T9N, R59W, 6th P.M.**



PHOTO: VIEW OF LOCATION STAKE

CAMERA ANGLE: SOUTHERLY



PHOTO: VIEW OF LOCATION STAKE

CAMERA ANGLE: WESTERLY



- Since 1964 -

**UELS**

Uintah Engineering & Land Surveying  
85 South 200 East Vernal, Utah 84078  
(435) 789-1017 \* FAX (435) 789-1813

**LOCATION PHOTOS**

**12** **28** **10**  
MONTH DAY YEAR

TAKEN BY: B.B.

DRAWN BY: S.F.

REVISED: 00-00-00

PHOTO  
**P3**