

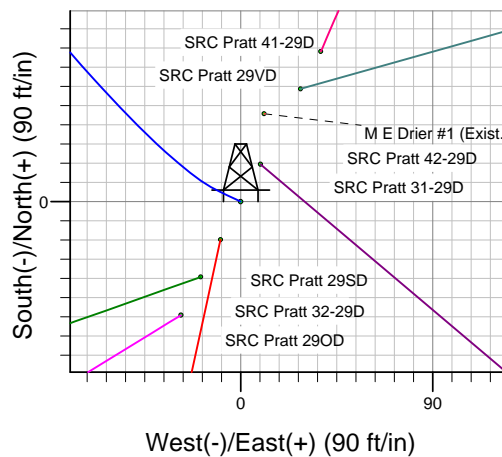
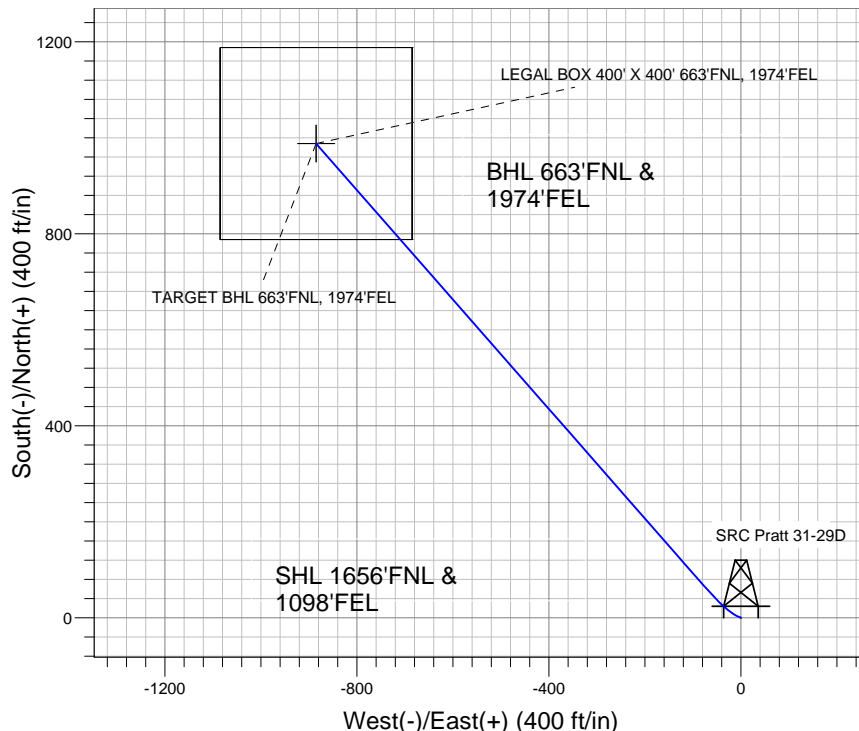
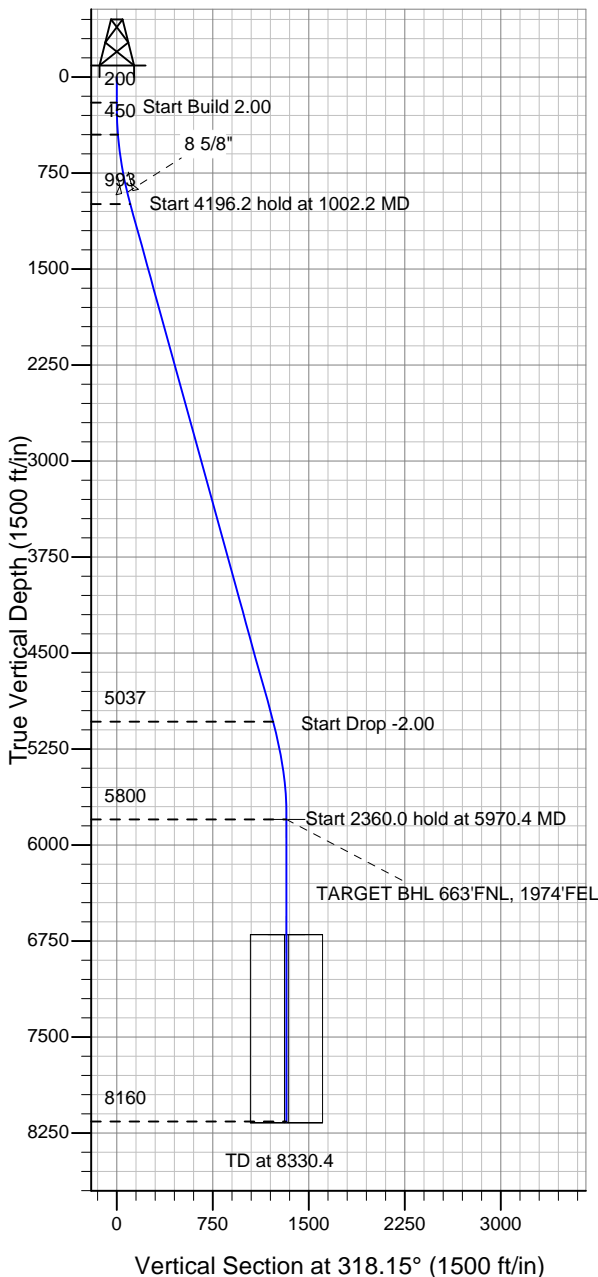
Well Name: SRC Pratt 31-29D

Surface Location: SRC Pratt 41-29D Pad Sec.29-T1N-R68W
North American Datum 1983 , US State Plane 1983 , Colorado Northern Zone

Ground Elevation: 5212.0

+N/-S	+E/-W	Northing	Easting	Latitude	Longitude	Slot
0.0	0.0	1252229.36	3133819.61	40.024767	-105.022159	
Original Well Elev WELL @ 5225.0ft (Original Well Elev)						

Synergy Resources



SRC Pratt 41-29D Pad Sec.29-T1N-R68W
SRC Pratt 31-29D
Plan #1 (3-01-11)
17:23, March 01 2011



Azimuths to True North
Magnetic North: 9.01°

Magnetic Field
Strength: 52932.7nT
Dip Angle: 66.71°
Date: 3/1/2011
Model: IGRF2010

WELLBORE TARGET DETAILS (LAT/LONG)

Name	TVD	+N/-S	+E/-W	Latitude	Longitude	Shape
TARGET BHL 663'FNL, 1974'FEL	5800.0	988.0	-885.0	40.027479	-105.025319	Point
LEGAL BOX 400' X 400' 663'FNL, 1974'FEL	6700.0	988.0	-885.0	40.027479	-105.025319	Rectangle (Sides: L400.0 W400.0)

SECTION DETAILS

Sec	MD	Inc	Azi	TVD	+N/-S	+E/-W	DLeg	TFace	VSec	Target
1	0.0	0.00	0.00	0.0	0.0	0.0	0.00	0.00	0.0	
2	200.0	0.00	0.00	200.0	0.0	0.0	0.00	0.00	0.0	
3	450.0	5.00	295.00	449.7	4.6	-9.9	2.00	295.00	10.0	
4	1002.2	15.44	318.76	992.5	70.2	-80.4	2.00	34.05	105.9	
5	5198.4	15.44	318.76	5037.3	910.2	-816.8	0.00	0.00	1223.0	
6	5970.4	0.00	0.00	5800.0	988.0	-885.0	2.00	180.00	1326.4	TARGET BHL 663'FNL, 1974'FEL
7	8330.4	0.00	0.00	8160.0	988.0	-885.0	0.00	0.00	1326.4	



Directional

Synergy Resources

SEC.29-T1N-R68W

SRC Pratt 41-29D Pad Sec.29-T1N-R68W

SRC Pratt 31-29D

Wellbore #1

Plan: Plan #1 (3-01-11)

Standard Planning Report

01 March, 2011

Database:	Landmark	Local Co-ordinate Reference:	Well SRC Pratt 31-29D
Company:	Synergy Resources	TVD Reference:	WELL @ 5225.0ft (Original Well Elev)
Project:	SEC.29-T1N-R68W	MD Reference:	WELL @ 5225.0ft (Original Well Elev)
Site:	SRC Pratt 41-29D Pad Sec.29-T1N-R68W	North Reference:	True
Well:	SRC Pratt 31-29D	Survey Calculation Method:	Minimum Curvature
Wellbore:	Wellbore #1		
Design:	Plan #1 (3-01-11)		

Project	SEC.29-T1N-R68W, Weld County, Colorado		
Map System:	US State Plane 1983	System Datum:	Mean Sea Level
Geo Datum:	North American Datum 1983		
Map Zone:	Colorado Northern Zone		Using geodetic scale factor

Site	SRC Pratt 41-29D Pad Sec.29-T1N-R68W				
Site Position:		Northing:	1,252,299.88 ft	Latitude:	40.024960
From:	Lat/Long	Easting:	3,133,856.76 ft	Longitude:	-105.022025
Position Uncertainty:	0.0 ft	Slot Radius:	"	Grid Convergence:	0.31 °

Well	SRC Pratt 31-29D					
Well Position	+N-S	-70.3 ft	Northing:	1,252,229.36 ft	Latitude:	40.024767
	+E-W	-37.5 ft	Easting:	3,133,819.61 ft	Longitude:	-105.022159
Position Uncertainty		0.0 ft	Wellhead Elevation:	ft	Ground Level:	5,212.0 ft

Wellbore	Wellbore #1				
Magnetics	Model Name	Sample Date	Declination (°)	Dip Angle (°)	Field Strength (nT)
	IGRF2010	3/1/2011	9.01	66.71	52,933

Design	Plan #1 (3-01-11)			
Audit Notes:				
Version:	Phase:	PROTOTYPE	Tie On Depth:	0.0
Vertical Section:	Depth From (TVD) (ft)	+N/-S (ft)	+E/-W (ft)	Direction (°)
	0.0	0.0	0.0	318.15

Plan Sections										
Measured Depth (ft)	Inclination (°)	Azimuth (°)	Vertical Depth (ft)	+N/-S (ft)	+E/-W (ft)	Dogleg Rate (°/100ft)	Build Rate (°/100ft)	Turn Rate (°/100ft)	TFO (°)	Target
0.0	0.00	0.00	0.0	0.0	0.0	0.00	0.00	0.00	0.00	
200.0	0.00	0.00	200.0	0.0	0.0	0.00	0.00	0.00	0.00	
450.0	5.00	295.00	449.7	4.6	-9.9	2.00	2.00	0.00	295.00	
1,002.2	15.44	318.76	992.5	70.2	-80.4	2.00	1.89	4.30	34.05	
5,198.4	15.44	318.76	5,037.3	910.2	-816.8	0.00	0.00	0.00	0.00	
5,970.4	0.00	0.00	5,800.0	988.0	-885.0	2.00	-2.00	0.00	180.00	TARGET BHL 663'I
8,330.4	0.00	0.00	8,160.0	988.0	-885.0	0.00	0.00	0.00	0.00	

Database:	Landmark	Local Co-ordinate Reference:	Well SRC Pratt 31-29D
Company:	Synergy Resources	TVD Reference:	WELL @ 5225.0ft (Original Well Elev)
Project:	SEC.29-T1N-R68W	MD Reference:	WELL @ 5225.0ft (Original Well Elev)
Site:	SRC Pratt 41-29D Pad Sec.29-T1N-R68W	North Reference:	True
Well:	SRC Pratt 31-29D	Survey Calculation Method:	Minimum Curvature
Wellbore:	Wellbore #1		
Design:	Plan #1 (3-01-11)		

Planned Survey									
Measured Depth (ft)	Inclination (°)	Azimuth (°)	Vertical Depth (ft)	+N/-S (ft)	+E/-W (ft)	Vertical Section (ft)	Dogleg Rate (°/100ft)	Build Rate (°/100ft)	Turn Rate (°/100ft)
0.0	0.00	0.00	0.0	0.0	0.0	0.0	0.00	0.00	0.00
40.0	0.00	0.00	40.0	0.0	0.0	0.0	0.00	0.00	0.00
80.0	0.00	0.00	80.0	0.0	0.0	0.0	0.00	0.00	0.00
120.0	0.00	0.00	120.0	0.0	0.0	0.0	0.00	0.00	0.00
160.0	0.00	0.00	160.0	0.0	0.0	0.0	0.00	0.00	0.00
200.0	0.00	0.00	200.0	0.0	0.0	0.0	0.00	0.00	0.00
240.0	0.80	295.00	240.0	0.1	-0.3	0.3	2.00	2.00	0.00
280.0	1.60	295.00	280.0	0.5	-1.0	1.0	2.00	2.00	0.00
320.0	2.40	295.00	320.0	1.1	-2.3	2.3	2.00	2.00	0.00
360.0	3.20	295.00	359.9	1.9	-4.0	4.1	2.00	2.00	0.00
400.0	4.00	295.00	399.8	2.9	-6.3	6.4	2.00	2.00	0.00
440.0	4.80	295.00	439.7	4.2	-9.1	9.2	2.00	2.00	0.00
450.0	5.00	295.00	449.7	4.6	-9.9	10.0	2.00	2.00	0.00
480.0	5.51	298.50	479.6	5.8	-12.3	12.6	2.00	1.69	11.67
520.0	6.21	302.27	519.3	7.9	-15.8	16.5	2.00	1.76	9.41
560.0	6.93	305.26	559.1	10.5	-19.6	20.9	2.00	1.81	7.48
600.0	7.67	307.68	598.8	13.5	-23.7	25.9	2.00	1.85	6.06
640.0	8.42	309.68	638.4	17.0	-28.1	31.4	2.00	1.87	4.99
680.0	9.18	311.35	677.9	21.0	-32.7	37.5	2.00	1.90	4.18
720.0	9.94	312.77	717.3	25.4	-37.7	44.1	2.00	1.91	3.54
760.0	10.71	313.98	756.7	30.4	-42.9	51.2	2.00	1.92	3.04
800.0	11.49	315.04	795.9	35.8	-48.4	58.9	2.00	1.93	2.64
840.0	12.26	315.96	835.1	41.6	-54.1	67.1	2.00	1.94	2.31
880.0	13.04	316.77	874.1	48.0	-60.2	75.9	2.00	1.95	2.04
906.6	13.56	317.26	900.0	52.4	-64.4	82.0	2.00	1.95	1.84
8 5/8"									
920.0	13.83	317.50	913.0	54.8	-66.5	85.2	2.00	1.96	1.74
960.0	14.61	318.14	951.8	62.1	-73.1	95.0	2.00	1.96	1.62
1,000.0	15.40	318.73	990.4	69.8	-80.0	105.4	2.00	1.96	1.46
1,002.2	15.44	318.76	992.5	70.2	-80.4	105.9	2.00	1.97	1.38
1,040.0	15.44	318.76	1,029.0	77.8	-87.0	116.0	0.00	0.00	0.00
1,080.0	15.44	318.76	1,067.5	85.8	-94.0	126.7	0.00	0.00	0.00
1,120.0	15.44	318.76	1,106.1	93.8	-101.0	137.3	0.00	0.00	0.00
1,160.0	15.44	318.76	1,144.7	101.8	-108.1	148.0	0.00	0.00	0.00
1,200.0	15.44	318.76	1,183.2	109.8	-115.1	158.6	0.00	0.00	0.00
1,240.0	15.44	318.76	1,221.8	117.9	-122.1	169.2	0.00	0.00	0.00
1,280.0	15.44	318.76	1,260.3	125.9	-129.1	179.9	0.00	0.00	0.00
1,320.0	15.44	318.76	1,298.9	133.9	-136.1	190.5	0.00	0.00	0.00
1,360.0	15.44	318.76	1,337.4	141.9	-143.2	201.2	0.00	0.00	0.00
1,400.0	15.44	318.76	1,376.0	149.9	-150.2	211.8	0.00	0.00	0.00
1,440.0	15.44	318.76	1,414.6	157.9	-157.2	222.5	0.00	0.00	0.00
1,480.0	15.44	318.76	1,453.1	165.9	-164.2	233.1	0.00	0.00	0.00
1,520.0	15.44	318.76	1,491.7	173.9	-171.2	243.8	0.00	0.00	0.00
1,560.0	15.44	318.76	1,530.2	181.9	-178.3	254.4	0.00	0.00	0.00
1,600.0	15.44	318.76	1,568.8	189.9	-185.3	265.1	0.00	0.00	0.00
1,640.0	15.44	318.76	1,607.3	197.9	-192.3	275.7	0.00	0.00	0.00
1,680.0	15.44	318.76	1,645.9	205.9	-199.3	286.4	0.00	0.00	0.00
1,720.0	15.44	318.76	1,684.4	213.9	-206.3	297.0	0.00	0.00	0.00
1,760.0	15.44	318.76	1,723.0	221.9	-213.4	307.7	0.00	0.00	0.00
1,800.0	15.44	318.76	1,761.6	230.0	-220.4	318.3	0.00	0.00	0.00
1,840.0	15.44	318.76	1,800.1	238.0	-227.4	329.0	0.00	0.00	0.00
1,880.0	15.44	318.76	1,838.7	246.0	-234.4	339.6	0.00	0.00	0.00
1,920.0	15.44	318.76	1,877.2	254.0	-241.4	350.3	0.00	0.00	0.00
1,960.0	15.44	318.76	1,915.8	262.0	-248.5	360.9	0.00	0.00	0.00

Database:	Landmark	Local Co-ordinate Reference:	Well SRC Pratt 31-29D
Company:	Synergy Resources	TVD Reference:	WELL @ 5225.0ft (Original Well Elev)
Project:	SEC.29-T1N-R68W	MD Reference:	WELL @ 5225.0ft (Original Well Elev)
Site:	SRC Pratt 41-29D Pad Sec.29-T1N-R68W	North Reference:	True
Well:	SRC Pratt 31-29D	Survey Calculation Method:	Minimum Curvature
Wellbore:	Wellbore #1		
Design:	Plan #1 (3-01-11)		

Planned Survey										
Measured Depth (ft)	Inclination (°)	Azimuth (°)	Vertical Depth (ft)	+N/-S (ft)	+E/-W (ft)	Vertical Section (ft)	Dogleg Rate (°/100ft)	Build Rate (°/100ft)	Turn Rate (°/100ft)	
2,000.0	15.44	318.76	1,954.3	270.0	-255.5	371.6	0.00	0.00	0.00	
2,040.0	15.44	318.76	1,992.9	278.0	-262.5	382.2	0.00	0.00	0.00	
2,080.0	15.44	318.76	2,031.5	286.0	-269.5	392.9	0.00	0.00	0.00	
2,120.0	15.44	318.76	2,070.0	294.0	-276.5	403.5	0.00	0.00	0.00	
2,160.0	15.44	318.76	2,108.6	302.0	-283.6	414.2	0.00	0.00	0.00	
2,200.0	15.44	318.76	2,147.1	310.0	-290.6	424.8	0.00	0.00	0.00	
2,240.0	15.44	318.76	2,185.7	318.0	-297.6	435.5	0.00	0.00	0.00	
2,280.0	15.44	318.76	2,224.2	326.0	-304.6	446.1	0.00	0.00	0.00	
2,320.0	15.44	318.76	2,262.8	334.0	-311.6	456.7	0.00	0.00	0.00	
2,360.0	15.44	318.76	2,301.4	342.1	-318.7	467.4	0.00	0.00	0.00	
2,400.0	15.44	318.76	2,339.9	350.1	-325.7	478.0	0.00	0.00	0.00	
2,440.0	15.44	318.76	2,378.5	358.1	-332.7	488.7	0.00	0.00	0.00	
2,480.0	15.44	318.76	2,417.0	366.1	-339.7	499.3	0.00	0.00	0.00	
2,520.0	15.44	318.76	2,455.6	374.1	-346.7	510.0	0.00	0.00	0.00	
2,560.0	15.44	318.76	2,494.1	382.1	-353.8	520.6	0.00	0.00	0.00	
2,600.0	15.44	318.76	2,532.7	390.1	-360.8	531.3	0.00	0.00	0.00	
2,640.0	15.44	318.76	2,571.2	398.1	-367.8	541.9	0.00	0.00	0.00	
2,680.0	15.44	318.76	2,609.8	406.1	-374.8	552.6	0.00	0.00	0.00	
2,720.0	15.44	318.76	2,648.4	414.1	-381.8	563.2	0.00	0.00	0.00	
2,760.0	15.44	318.76	2,686.9	422.1	-388.9	573.9	0.00	0.00	0.00	
2,800.0	15.44	318.76	2,725.5	430.1	-395.9	584.5	0.00	0.00	0.00	
2,840.0	15.44	318.76	2,764.0	438.1	-402.9	595.2	0.00	0.00	0.00	
2,880.0	15.44	318.76	2,802.6	446.1	-409.9	605.8	0.00	0.00	0.00	
2,920.0	15.44	318.76	2,841.1	454.2	-416.9	616.5	0.00	0.00	0.00	
2,960.0	15.44	318.76	2,879.7	462.2	-424.0	627.1	0.00	0.00	0.00	
3,000.0	15.44	318.76	2,918.3	470.2	-431.0	637.8	0.00	0.00	0.00	
3,040.0	15.44	318.76	2,956.8	478.2	-438.0	648.4	0.00	0.00	0.00	
3,080.0	15.44	318.76	2,995.4	486.2	-445.0	659.1	0.00	0.00	0.00	
3,120.0	15.44	318.76	3,033.9	494.2	-452.0	669.7	0.00	0.00	0.00	
3,160.0	15.44	318.76	3,072.5	502.2	-459.1	680.4	0.00	0.00	0.00	
3,200.0	15.44	318.76	3,111.0	510.2	-466.1	691.0	0.00	0.00	0.00	
3,240.0	15.44	318.76	3,149.6	518.2	-473.1	701.7	0.00	0.00	0.00	
3,280.0	15.44	318.76	3,188.2	526.2	-480.1	712.3	0.00	0.00	0.00	
3,320.0	15.44	318.76	3,226.7	534.2	-487.1	723.0	0.00	0.00	0.00	
3,360.0	15.44	318.76	3,265.3	542.2	-494.2	733.6	0.00	0.00	0.00	
3,400.0	15.44	318.76	3,303.8	550.2	-501.2	744.2	0.00	0.00	0.00	
3,440.0	15.44	318.76	3,342.4	558.2	-508.2	754.9	0.00	0.00	0.00	
3,480.0	15.44	318.76	3,380.9	566.3	-515.2	765.5	0.00	0.00	0.00	
3,520.0	15.44	318.76	3,419.5	574.3	-522.2	776.2	0.00	0.00	0.00	
3,560.0	15.44	318.76	3,458.0	582.3	-529.3	786.8	0.00	0.00	0.00	
3,600.0	15.44	318.76	3,496.6	590.3	-536.3	797.5	0.00	0.00	0.00	
3,640.0	15.44	318.76	3,535.2	598.3	-543.3	808.1	0.00	0.00	0.00	
3,680.0	15.44	318.76	3,573.7	606.3	-550.3	818.8	0.00	0.00	0.00	
3,720.0	15.44	318.76	3,612.3	614.3	-557.3	829.4	0.00	0.00	0.00	
3,760.0	15.44	318.76	3,650.8	622.3	-564.4	840.1	0.00	0.00	0.00	
3,800.0	15.44	318.76	3,689.4	630.3	-571.4	850.7	0.00	0.00	0.00	
3,840.0	15.44	318.76	3,727.9	638.3	-578.4	861.4	0.00	0.00	0.00	
3,880.0	15.44	318.76	3,766.5	646.3	-585.4	872.0	0.00	0.00	0.00	
3,920.0	15.44	318.76	3,805.1	654.3	-592.4	882.7	0.00	0.00	0.00	
3,960.0	15.44	318.76	3,843.6	662.3	-599.5	893.3	0.00	0.00	0.00	
4,000.0	15.44	318.76	3,882.2	670.3	-606.5	904.0	0.00	0.00	0.00	
4,040.0	15.44	318.76	3,920.7	678.4	-613.5	914.6	0.00	0.00	0.00	
4,080.0	15.44	318.76	3,959.3	686.4	-620.5	925.3	0.00	0.00	0.00	
4,120.0	15.44	318.76	3,997.8	694.4	-627.5	935.9	0.00	0.00	0.00	

Database:	Landmark	Local Co-ordinate Reference:	Well SRC Pratt 31-29D
Company:	Synergy Resources	TVD Reference:	WELL @ 5225.0ft (Original Well Elev)
Project:	SEC.29-T1N-R68W	MD Reference:	WELL @ 5225.0ft (Original Well Elev)
Site:	SRC Pratt 41-29D Pad Sec.29-T1N-R68W	North Reference:	True
Well:	SRC Pratt 31-29D	Survey Calculation Method:	Minimum Curvature
Wellbore:	Wellbore #1		
Design:	Plan #1 (3-01-11)		

Planned Survey									
Measured Depth (ft)	Inclination (°)	Azimuth (°)	Vertical Depth (ft)	+N/-S (ft)	+E/-W (ft)	Vertical Section (ft)	Dogleg Rate (°/100ft)	Build Rate (°/100ft)	Turn Rate (°/100ft)
4,160.0	15.44	318.76	4,036.4	702.4	-634.6	946.6	0.00	0.00	0.00
4,200.0	15.44	318.76	4,075.0	710.4	-641.6	957.2	0.00	0.00	0.00
4,240.0	15.44	318.76	4,113.5	718.4	-648.6	967.9	0.00	0.00	0.00
4,280.0	15.44	318.76	4,152.1	726.4	-655.6	978.5	0.00	0.00	0.00
4,320.0	15.44	318.76	4,190.6	734.4	-662.6	989.2	0.00	0.00	0.00
4,360.0	15.44	318.76	4,229.2	742.4	-669.7	999.8	0.00	0.00	0.00
4,400.0	15.44	318.76	4,267.7	750.4	-676.7	1,010.5	0.00	0.00	0.00
4,440.0	15.44	318.76	4,306.3	758.4	-683.7	1,021.1	0.00	0.00	0.00
4,480.0	15.44	318.76	4,344.8	766.4	-690.7	1,031.7	0.00	0.00	0.00
4,520.0	15.44	318.76	4,383.4	774.4	-697.7	1,042.4	0.00	0.00	0.00
4,560.0	15.44	318.76	4,422.0	782.4	-704.8	1,053.0	0.00	0.00	0.00
4,600.0	15.44	318.76	4,460.5	790.5	-711.8	1,063.7	0.00	0.00	0.00
4,640.0	15.44	318.76	4,499.1	798.5	-718.8	1,074.3	0.00	0.00	0.00
4,680.0	15.44	318.76	4,537.6	806.5	-725.8	1,085.0	0.00	0.00	0.00
4,720.0	15.44	318.76	4,576.2	814.5	-732.8	1,095.6	0.00	0.00	0.00
4,760.0	15.44	318.76	4,614.7	822.5	-739.9	1,106.3	0.00	0.00	0.00
4,800.0	15.44	318.76	4,653.3	830.5	-746.9	1,116.9	0.00	0.00	0.00
4,840.0	15.44	318.76	4,691.9	838.5	-753.9	1,127.6	0.00	0.00	0.00
4,880.0	15.44	318.76	4,730.4	846.5	-760.9	1,138.2	0.00	0.00	0.00
4,920.0	15.44	318.76	4,769.0	854.5	-767.9	1,148.9	0.00	0.00	0.00
4,960.0	15.44	318.76	4,807.5	862.5	-775.0	1,159.5	0.00	0.00	0.00
5,000.0	15.44	318.76	4,846.1	870.5	-782.0	1,170.2	0.00	0.00	0.00
5,040.0	15.44	318.76	4,884.6	878.5	-789.0	1,180.8	0.00	0.00	0.00
5,080.0	15.44	318.76	4,923.2	886.5	-796.0	1,191.5	0.00	0.00	0.00
5,120.0	15.44	318.76	4,961.8	894.5	-803.0	1,202.1	0.00	0.00	0.00
5,160.0	15.44	318.76	5,000.3	902.6	-810.1	1,212.8	0.00	0.00	0.00
5,198.4	15.44	318.76	5,037.3	910.2	-816.8	1,223.0	0.00	0.00	0.00
5,200.0	15.41	318.76	5,038.9	910.6	-817.1	1,223.4	2.00	-2.00	0.00
5,240.0	14.61	318.76	5,077.5	918.3	-823.9	1,233.8	2.00	-2.00	0.00
5,280.0	13.81	318.76	5,116.3	925.7	-830.4	1,243.6	2.00	-2.00	0.00
5,320.0	13.01	318.76	5,155.2	932.7	-836.5	1,252.9	2.00	-2.00	0.00
5,360.0	12.21	318.76	5,194.2	939.3	-842.3	1,261.6	2.00	-2.00	0.00
5,400.0	11.41	318.76	5,233.4	945.4	-847.7	1,269.8	2.00	-2.00	0.00
5,440.0	10.61	318.76	5,272.6	951.2	-852.7	1,277.4	2.00	-2.00	0.00
5,480.0	9.81	318.76	5,312.0	956.5	-857.4	1,284.5	2.00	-2.00	0.00
5,520.0	9.01	318.76	5,351.5	961.4	-861.7	1,291.0	2.00	-2.00	0.00
5,560.0	8.21	318.76	5,391.0	965.9	-865.6	1,297.0	2.00	-2.00	0.00
5,600.0	7.41	318.76	5,430.6	970.0	-869.2	1,302.5	2.00	-2.00	0.00
5,640.0	6.61	318.76	5,470.3	973.7	-872.4	1,307.3	2.00	-2.00	0.00
5,680.0	5.81	318.76	5,510.1	976.9	-875.3	1,311.7	2.00	-2.00	0.00
5,720.0	5.01	318.76	5,549.9	979.8	-877.8	1,315.4	2.00	-2.00	0.00
5,760.0	4.21	318.76	5,589.8	982.2	-879.9	1,318.6	2.00	-2.00	0.00
5,800.0	3.41	318.76	5,629.7	984.2	-881.6	1,321.3	2.00	-2.00	0.00
5,840.0	2.61	318.76	5,669.7	985.7	-883.0	1,323.4	2.00	-2.00	0.00
5,880.0	1.81	318.76	5,709.6	986.9	-884.0	1,324.9	2.00	-2.00	0.00
5,920.0	1.01	318.76	5,749.6	987.6	-884.7	1,325.9	2.00	-2.00	0.00
5,960.0	0.21	318.76	5,789.6	988.0	-884.9	1,326.4	2.00	-2.00	0.00
5,970.4	0.00	0.00	5,800.0	988.0	-885.0	1,326.4	2.00	-2.00	0.00
TARGET BHL 663'FNL, 1974'FEL									
6,000.0	0.00	0.00	5,829.6	988.0	-885.0	1,326.4	0.00	0.00	0.00
6,040.0	0.00	0.00	5,869.6	988.0	-885.0	1,326.4	0.00	0.00	0.00
6,080.0	0.00	0.00	5,909.6	988.0	-885.0	1,326.4	0.00	0.00	0.00
6,120.0	0.00	0.00	5,949.6	988.0	-885.0	1,326.4	0.00	0.00	0.00
6,160.0	0.00	0.00	5,989.6	988.0	-885.0	1,326.4	0.00	0.00	0.00

Planned Survey										
Measured Depth (ft)	Inclination (°)	Azimuth (°)	Vertical Depth (ft)	+N/-S (ft)	+E/-W (ft)	Vertical Section (ft)	Dogleg Rate (°/100ft)	Build Rate (°/100ft)	Turn Rate (°/100ft)	
6,200.0	0.00	0.00	6,029.6	988.0	-885.0	1,326.4	0.00	0.00	0.00	
6,240.0	0.00	0.00	6,069.6	988.0	-885.0	1,326.4	0.00	0.00	0.00	
6,280.0	0.00	0.00	6,109.6	988.0	-885.0	1,326.4	0.00	0.00	0.00	
6,320.0	0.00	0.00	6,149.6	988.0	-885.0	1,326.4	0.00	0.00	0.00	
6,360.0	0.00	0.00	6,189.6	988.0	-885.0	1,326.4	0.00	0.00	0.00	
6,400.0	0.00	0.00	6,229.6	988.0	-885.0	1,326.4	0.00	0.00	0.00	
6,440.0	0.00	0.00	6,269.6	988.0	-885.0	1,326.4	0.00	0.00	0.00	
6,480.0	0.00	0.00	6,309.6	988.0	-885.0	1,326.4	0.00	0.00	0.00	
6,520.0	0.00	0.00	6,349.6	988.0	-885.0	1,326.4	0.00	0.00	0.00	
6,560.0	0.00	0.00	6,389.6	988.0	-885.0	1,326.4	0.00	0.00	0.00	
6,600.0	0.00	0.00	6,429.6	988.0	-885.0	1,326.4	0.00	0.00	0.00	
6,640.0	0.00	0.00	6,469.6	988.0	-885.0	1,326.4	0.00	0.00	0.00	
6,680.0	0.00	0.00	6,509.6	988.0	-885.0	1,326.4	0.00	0.00	0.00	
6,720.0	0.00	0.00	6,549.6	988.0	-885.0	1,326.4	0.00	0.00	0.00	
6,760.0	0.00	0.00	6,589.6	988.0	-885.0	1,326.4	0.00	0.00	0.00	
6,800.0	0.00	0.00	6,629.6	988.0	-885.0	1,326.4	0.00	0.00	0.00	
6,840.0	0.00	0.00	6,669.6	988.0	-885.0	1,326.4	0.00	0.00	0.00	
6,870.4	0.00	0.00	6,700.0	988.0	-885.0	1,326.4	0.00	0.00	0.00	
LEGAL BOX 400' X 400' 663'FNL, 1974'FEL										
6,880.0	0.00	0.00	6,709.6	988.0	-885.0	1,326.4	0.00	0.00	0.00	
6,920.0	0.00	0.00	6,749.6	988.0	-885.0	1,326.4	0.00	0.00	0.00	
6,960.0	0.00	0.00	6,789.6	988.0	-885.0	1,326.4	0.00	0.00	0.00	
7,000.0	0.00	0.00	6,829.6	988.0	-885.0	1,326.4	0.00	0.00	0.00	
7,040.0	0.00	0.00	6,869.6	988.0	-885.0	1,326.4	0.00	0.00	0.00	
7,080.0	0.00	0.00	6,909.6	988.0	-885.0	1,326.4	0.00	0.00	0.00	
7,120.0	0.00	0.00	6,949.6	988.0	-885.0	1,326.4	0.00	0.00	0.00	
7,160.0	0.00	0.00	6,989.6	988.0	-885.0	1,326.4	0.00	0.00	0.00	
7,200.0	0.00	0.00	7,029.6	988.0	-885.0	1,326.4	0.00	0.00	0.00	
7,240.0	0.00	0.00	7,069.6	988.0	-885.0	1,326.4	0.00	0.00	0.00	
7,280.0	0.00	0.00	7,109.6	988.0	-885.0	1,326.4	0.00	0.00	0.00	
7,320.0	0.00	0.00	7,149.6	988.0	-885.0	1,326.4	0.00	0.00	0.00	
7,360.0	0.00	0.00	7,189.6	988.0	-885.0	1,326.4	0.00	0.00	0.00	
7,400.0	0.00	0.00	7,229.6	988.0	-885.0	1,326.4	0.00	0.00	0.00	
7,440.0	0.00	0.00	7,269.6	988.0	-885.0	1,326.4	0.00	0.00	0.00	
7,480.0	0.00	0.00	7,309.6	988.0	-885.0	1,326.4	0.00	0.00	0.00	
7,520.0	0.00	0.00	7,349.6	988.0	-885.0	1,326.4	0.00	0.00	0.00	
7,560.0	0.00	0.00	7,389.6	988.0	-885.0	1,326.4	0.00	0.00	0.00	
7,600.0	0.00	0.00	7,429.6	988.0	-885.0	1,326.4	0.00	0.00	0.00	
7,640.0	0.00	0.00	7,469.6	988.0	-885.0	1,326.4	0.00	0.00	0.00	
7,680.0	0.00	0.00	7,509.6	988.0	-885.0	1,326.4	0.00	0.00	0.00	
7,720.0	0.00	0.00	7,549.6	988.0	-885.0	1,326.4	0.00	0.00	0.00	
7,760.0	0.00	0.00	7,589.6	988.0	-885.0	1,326.4	0.00	0.00	0.00	
7,800.0	0.00	0.00	7,629.6	988.0	-885.0	1,326.4	0.00	0.00	0.00	
7,840.0	0.00	0.00	7,669.6	988.0	-885.0	1,326.4	0.00	0.00	0.00	
7,880.0	0.00	0.00	7,709.6	988.0	-885.0	1,326.4	0.00	0.00	0.00	
7,920.0	0.00	0.00	7,749.6	988.0	-885.0	1,326.4	0.00	0.00	0.00	
7,960.0	0.00	0.00	7,789.6	988.0	-885.0	1,326.4	0.00	0.00	0.00	
8,000.0	0.00	0.00	7,829.6	988.0	-885.0	1,326.4	0.00	0.00	0.00	
8,040.0	0.00	0.00	7,869.6	988.0	-885.0	1,326.4	0.00	0.00	0.00	
8,080.0	0.00	0.00	7,909.6	988.0	-885.0	1,326.4	0.00	0.00	0.00	
8,120.0	0.00	0.00	7,949.6	988.0	-885.0	1,326.4	0.00	0.00	0.00	
8,160.0	0.00	0.00	7,989.6	988.0	-885.0	1,326.4	0.00	0.00	0.00	
8,200.0	0.00	0.00	8,029.6	988.0	-885.0	1,326.4	0.00	0.00	0.00	

Database:	Landmark	Local Co-ordinate Reference:	Well SRC Pratt 31-29D
Company:	Synergy Resources	TVD Reference:	WELL @ 5225.0ft (Original Well Elev)
Project:	SEC.29-T1N-R68W	MD Reference:	WELL @ 5225.0ft (Original Well Elev)
Site:	SRC Pratt 41-29D Pad Sec.29-T1N-R68W	North Reference:	True
Well:	SRC Pratt 31-29D	Survey Calculation Method:	Minimum Curvature
Wellbore:	Wellbore #1		
Design:	Plan #1 (3-01-11)		

Planned Survey									
Measured Depth (ft)	Inclination (°)	Azimuth (°)	Vertical Depth (ft)	+N/-S (ft)	+E/-W (ft)	Vertical Section (ft)	Dogleg Rate (°/100ft)	Build Rate (°/100ft)	Turn Rate (°/100ft)
8,240.0	0.00	0.00	8,069.6	988.0	-885.0	1,326.4	0.00	0.00	0.00
8,280.0	0.00	0.00	8,109.6	988.0	-885.0	1,326.4	0.00	0.00	0.00
8,320.0	0.00	0.00	8,149.6	988.0	-885.0	1,326.4	0.00	0.00	0.00
8,330.4	0.00	0.00	8,160.0	988.0	-885.0	1,326.4	0.00	0.00	0.00

Targets									
Target Name	- hit/miss target	Dip Angle (°)	Dip Dir. (°)	TVD (ft)	+N/-S (ft)	+E/-W (ft)	Northing (ft)	Easting (ft)	
	- Shape								Latitude Longitude
LEGAL BOX 400' X 400'	- plan hits target center	0.00	0.00	6,700.0	988.0	-885.0	1,253,212.54	3,132,929.33	40.027479 -105.025319
	- Rectangle (sides W400.0 H400.0 D1,470.0)								
TARGET BHL 663'FN	- plan hits target center	0.00	0.00	5,800.0	988.0	-885.0	1,253,212.52	3,132,929.37	40.027479 -105.025319
	- Point								

Casing Points					
Measured Depth (ft)	Vertical Depth (ft)	Name	Casing Diameter (")	Hole Diameter (")	
906.6	900.0	8 5/8"	8-5/8	12-1/4	



Directional

Synergy Resources

SEC.29-T1N-R68W

SRC Pratt 41-29D Pad Sec.29-T1N-R68W

SRC Pratt 31-29D

Wellbore #1

Plan #1 (3-01-11)

Anticollision Report

01 March, 2011

Company:	Synergy Resources	Local Co-ordinate Reference:	Well SRC Pratt 31-29D
Project:	SEC.29-T1N-R68W	TVD Reference:	WELL @ 5225.0ft (Original Well Elev)
Reference Site:	SRC Pratt 41-29D Pad Sec.29-T1N-R68W	MD Reference:	WELL @ 5225.0ft (Original Well Elev)
Site Error:	0.0ft	North Reference:	True
Reference Well:	SRC Pratt 31-29D	Survey Calculation Method:	Minimum Curvature
Well Error:	0.0ft	Output errors are at	2.00 sigma
Reference Wellbore	Wellbore #1	Database:	Landmark
Reference Design:	Plan #1 (3-01-11)	Offset TVD Reference:	Offset Datum

Reference	Plan #1 (3-01-11)		
Filter type:	NO GLOBAL FILTER: Using user defined selection & filtering criteria		
Interpolation Method:	Stations	Error Model:	ISCWSA
Depth Range:	Unlimited	Scan Method:	Closest Approach 3D
Results Limited by:	Maximum center-center distance of 10,000.0ft	Error Surface:	Elliptical Conic
Warning Levels Evaluated at:	2.00 Sigma		

Survey Tool Program	Date 3/1/2011			
From (ft)	To (ft)	Survey (Wellbore)	Tool Name	Description
0.0	8,330.4	Plan #1 (3-01-11) (Wellbore #1)	MWD	MWD - Standard

Summary						
Site Name	Reference Measured Depth (ft)	Offset Measured Depth (ft)	Distance Between Centres (ft)	Distance Between Ellipses (ft)	Separation Factor	Warning
Offset Well - Wellbore - Design						
SRC Pratt 41-29D Pad Sec.29-T1N-R68W						
M E Drier #1 (Exist.) - Wellbore #1 - Design #1	407.3	475.2	41.9	40.2	24.250	CC
M E Drier #1 (Exist.) - Wellbore #1 - Design #1	450.0	517.7	42.1	40.1	21.809	ES
M E Drier #1 (Exist.) - Wellbore #1 - Design #1	700.0	765.6	49.5	46.3	15.660	SF
SRC Pratt 29SD - Wellbore #1 - Plan #1 (3-01-11)	278.9	277.9	20.2	19.2	20.336	CC
SRC Pratt 29SD - Wellbore #1 - Plan #1 (3-01-11)	300.0	299.0	20.2	19.1	18.593	ES
SRC Pratt 29SD - Wellbore #1 - Plan #1 (3-01-11)	500.0	498.5	25.1	23.1	12.430	SF
SRC Pratt 42-29D - Wellbore #1 - Plan #1 (2-28-11)	268.5	271.5	19.7	18.8	20.884	CC
SRC Pratt 42-29D - Wellbore #1 - Plan #1 (2-28-11)	300.0	303.0	19.8	18.7	18.363	ES
SRC Pratt 42-29D - Wellbore #1 - Plan #1 (2-28-11)	400.0	402.3	23.3	21.7	15.223	SF

Offset Design												
SRC Pratt 41-29D Pad Sec.29-T1N-R68W - M E Drier #1 (Exist.) - Wellbore #1 - Design #1												
Survey Program: 0-MWD												
Offset Site Error: 0.0 ft												
Offset Well Error: 0.0 ft												
Reference	Offset	Semi Major Axis		Distance								
Measured Depth (ft)	Vertical Depth (ft)	Measured Depth (ft)	Vertical Depth (ft)	Reference (ft)	Offset (ft)	Highside Toolface (°)	Offset Wellbore Centre +N/-S (ft)	Offset Wellbore Centre +E/-W (ft)	Between Centres (ft)	Between Ellipses (ft)	Minimum Separation (ft)	Separation Factor
0.0	0.0	68.0	68.0	0.0	0.1	14.86	41.2	10.9	42.6			
100.0	100.0	168.0	168.0	0.1	0.3	14.86	41.2	10.9	42.6	42.2	0.35	122.258
200.0	200.0	268.0	268.0	0.3	0.5	14.86	41.2	10.9	42.6	41.8	0.80	53.380
300.0	300.0	368.0	368.0	0.5	0.7	82.19	41.2	10.9	42.3	41.1	1.24	34.064
400.0	399.8	467.8	467.8	0.8	0.9	89.29	41.2	10.9	41.9	40.2	1.69	24.744
407.3	407.2	475.2	475.2	0.8	0.9	90.00	41.2	10.9	41.9	40.2	1.73	24.250 CC
450.0	449.7	517.7	517.7	0.9	1.0	94.62	41.2	10.9	42.1	40.1	1.93	21.809 ES
500.0	499.5	567.5	567.5	1.0	1.1	95.50	41.2	10.9	42.5	40.3	2.17	19.583
600.0	598.8	666.8	666.8	1.3	1.4	103.59	41.2	10.9	44.3	41.7	2.66	16.661
700.0	697.6	765.6	765.6	1.6	1.6	116.23	41.2	10.9	49.5	46.3	3.16	15.660 SF
800.0	795.9	863.9	863.9	2.0	1.8	129.17	41.2	10.9	59.5	55.9	3.65	16.325
900.0	893.6	961.6	961.6	2.4	2.0	139.85	41.2	10.9	74.9	70.8	4.12	18.194
1,002.2	992.5	1,060.5	1,060.5	2.9	2.3	147.97	41.2	10.9	95.8	91.2	4.59	20.870
1,100.0	1,086.8	1,154.8	1,154.8	3.4	2.5	154.60	41.2	10.9	118.9	113.8	5.04	23.570
1,200.0	1,183.2	1,251.2	1,251.2	3.9	2.7	159.14	41.2	10.9	143.5	138.0	5.51	26.040
1,300.0	1,279.6	1,347.6	1,347.6	4.5	2.9	162.35	41.2	10.9	168.7	162.8	5.98	28.198
1,400.0	1,376.0	1,444.0	1,444.0	5.0	3.1	164.73	41.2	10.9	194.3	187.9	6.46	30.074
1,500.0	1,472.4	1,540.4	1,540.4	5.6	3.3	166.55	41.2	10.9	220.2	213.3	6.94	31.708

CC - Min centre to center distance or convergent point, SF - min separation factor, ES - min ellipse separation

Company:	Synergy Resources	Local Co-ordinate Reference:	Well SRC Pratt 31-29D
Project:	SEC.29-T1N-R68W	TVD Reference:	WELL @ 5225.0ft (Original Well Elev)
Reference Site:	SRC Pratt 41-29D Pad Sec.29-T1N-R68W	MD Reference:	WELL @ 5225.0ft (Original Well Elev)
Site Error:	0.0ft	North Reference:	True
Reference Well:	SRC Pratt 31-29D	Survey Calculation Method:	Minimum Curvature
Well Error:	0.0ft	Output errors are at	2.00 sigma
Reference Wellbore	Wellbore #1	Database:	Landmark
Reference Design:	Plan #1 (3-01-11)	Offset TVD Reference:	Offset Datum

Offset Design												Offset Site Error:	0.0ft
Survey Program: 0-MWD												Offset Well Error:	0.0ft
Reference		Offset		Semi Major Axis			Distance						Warning
Measured Depth (ft)	Vertical Depth (ft)	Measured Depth (ft)	Vertical Depth (ft)	Reference (ft)	Offset (ft)	Highside Toolface (°)	Offset Wellbore Centre +N/-S (ft)	+E/-W (ft)	Between Centres (ft)	Between Ellipses (ft)	Minimum Separation (ft)	Separation Factor	
1,600.0	1,568.8	1,636.8	1,636.8	6.1	3.6	167.99	41.2	10.9	246.2	238.8	7.43	33.139	
1,700.0	1,665.2	1,733.2	1,733.2	6.6	3.8	169.15	41.2	10.9	272.3	264.4	7.92	34.397	
1,800.0	1,761.6	1,829.6	1,829.6	7.2	4.0	170.11	41.2	10.9	298.6	290.2	8.41	35.512	
1,900.0	1,858.0	1,926.0	1,926.0	7.7	4.2	170.92	41.2	10.9	324.8	315.9	8.90	36.504	
2,000.0	1,954.3	2,022.3	2,022.3	8.3	4.4	171.60	41.2	10.9	351.2	341.8	9.39	37.392	
2,100.0	2,050.7	2,118.7	2,118.7	8.8	4.6	172.19	41.2	10.9	377.6	367.7	9.89	38.191	
2,200.0	2,147.1	2,215.1	2,215.1	9.4	4.9	172.71	41.2	10.9	404.0	393.6	10.38	38.913	
2,300.0	2,243.5	2,311.5	2,311.5	10.0	5.1	173.16	41.2	10.9	430.4	419.5	10.88	39.568	
2,400.0	2,339.9	2,407.9	2,407.9	10.5	5.3	173.55	41.2	10.9	456.9	445.5	11.37	40.166	
2,500.0	2,436.3	2,504.3	2,504.3	11.1	5.5	173.91	41.2	10.9	483.3	471.5	11.87	40.713	
2,600.0	2,532.7	2,600.7	2,600.7	11.6	5.7	174.22	41.2	10.9	509.8	497.4	12.37	41.216	
2,700.0	2,629.1	2,697.1	2,697.1	12.2	5.9	174.51	41.2	10.9	536.3	523.5	12.87	41.678	
2,800.0	2,725.5	2,793.5	2,793.5	12.7	6.2	174.77	41.2	10.9	562.8	549.5	13.37	42.106	
2,900.0	2,821.9	2,889.9	2,889.9	13.3	6.4	175.01	41.2	10.9	589.4	575.5	13.87	42.503	
3,000.0	2,918.3	2,986.3	2,986.3	13.8	6.6	175.22	41.2	10.9	615.9	601.5	14.37	42.871	
3,100.0	3,014.6	3,082.6	3,082.6	14.4	6.8	175.42	41.2	10.9	642.4	627.6	14.87	43.214	
3,200.0	3,111.0	3,179.0	3,179.0	15.0	7.0	175.60	41.2	10.9	669.0	653.6	15.37	43.534	
3,300.0	3,207.4	3,275.4	3,275.4	15.5	7.2	175.77	41.2	10.9	695.5	679.7	15.87	43.834	
3,400.0	3,303.8	3,371.8	3,371.8	16.1	7.5	175.93	41.2	10.9	722.1	705.7	16.37	44.115	
3,500.0	3,400.2	3,468.2	3,468.2	16.6	7.7	176.07	41.2	10.9	748.6	731.8	16.87	44.379	
3,600.0	3,496.6	3,564.6	3,564.6	17.2	7.9	176.20	41.2	10.9	775.2	757.8	17.37	44.627	
3,700.0	3,593.0	3,661.0	3,661.0	17.7	8.1	176.33	41.2	10.9	801.8	783.9	17.87	44.861	
3,800.0	3,689.4	3,757.4	3,757.4	18.3	8.3	176.45	41.2	10.9	828.4	810.0	18.37	45.082	
3,900.0	3,785.8	3,853.8	3,853.8	18.8	8.5	176.56	41.2	10.9	854.9	836.1	18.88	45.291	
4,000.0	3,882.2	3,950.2	3,950.2	19.4	8.8	176.66	41.2	10.9	881.5	862.1	19.38	45.488	
4,100.0	3,978.6	4,046.6	4,046.6	20.0	9.0	176.76	41.2	10.9	908.1	888.2	19.88	45.676	
4,200.0	4,075.0	4,143.0	4,143.0	20.5	9.2	176.85	41.2	10.9	934.7	914.3	20.38	45.854	
4,300.0	4,171.3	4,239.3	4,239.3	21.1	9.4	176.94	41.2	10.9	961.3	940.4	20.89	46.023	
4,400.0	4,267.7	4,335.7	4,335.7	21.6	9.6	177.02	41.2	10.9	987.8	966.5	21.39	46.184	
4,500.0	4,364.1	4,432.1	4,432.1	22.2	9.8	177.10	41.2	10.9	1,014.4	992.5	21.89	46.337	
4,600.0	4,460.5	4,528.5	4,528.5	22.7	10.1	177.17	41.2	10.9	1,041.0	1,018.6	22.40	46.483	
4,700.0	4,556.9	4,624.9	4,624.9	23.3	10.3	177.24	41.2	10.9	1,067.6	1,044.7	22.90	46.623	
4,800.0	4,653.3	4,721.3	4,721.3	23.9	10.5	177.31	41.2	10.9	1,094.2	1,070.8	23.40	46.756	
4,900.0	4,749.7	4,817.7	4,817.7	24.4	10.7	177.38	41.2	10.9	1,120.8	1,096.9	23.91	46.883	
5,000.0	4,846.1	4,914.1	4,914.1	25.0	10.9	177.44	41.2	10.9	1,147.4	1,123.0	24.41	47.005	
5,100.0	4,942.5	5,010.5	5,010.5	25.5	11.1	177.49	41.2	10.9	1,174.0	1,149.1	24.91	47.122	
5,198.4	5,037.3	5,105.3	5,105.3	26.1	11.3	177.55	41.2	10.9	1,200.2	1,174.8	25.41	47.232	
5,200.0	5,038.9	5,106.9	5,106.9	26.1	11.4	177.55	41.2	10.9	1,200.6	1,175.2	25.42	47.232	
5,300.0	5,135.7	5,203.7	5,203.7	26.5	11.6	177.62	41.2	10.9	1,225.5	1,199.5	25.96	47.210	
5,400.0	5,233.4	5,301.4	5,301.4	26.9	11.8	177.68	41.2	10.9	1,246.9	1,220.5	26.46	47.125	
5,500.0	5,331.7	5,399.7	5,399.7	27.2	12.0	177.73	41.2	10.9	1,265.0	1,238.1	26.92	46.983	
5,600.0	5,430.6	5,498.6	5,498.6	27.5	12.2	177.77	41.2	10.9	1,279.6	1,252.2	27.35	46.787	
5,700.0	5,530.0	5,598.0	5,598.0	27.7	12.5	177.79	41.2	10.9	1,290.7	1,263.0	27.73	46.541	
5,800.0	5,629.7	5,697.7	5,697.7	27.9	12.7	177.81	41.2	10.9	1,298.4	1,270.3	28.08	46.245	
5,900.0	5,729.6	5,797.6	5,797.6	28.0	12.9	177.82	41.2	10.9	1,302.6	1,274.2	28.38	45.902	
5,970.4	5,800.0	5,868.0	5,868.0	28.1	13.1	136.58	41.2	10.9	1,303.5	1,274.9	28.57	45.630	
6,000.0	5,829.6	5,897.6	5,897.6	28.1	13.1	136.58	41.2	10.9	1,303.5	1,274.8	28.68	45.450	
6,100.0	5,929.6	5,997.6	5,997.6	28.2	13.4	136.58	41.2	10.9	1,303.5	1,274.4	29.08	44.830	
6,200.0	6,029.6	6,097.6	6,097.6	28.3	13.6	136.58	41.2	10.9	1,303.5	1,274.0	29.47	44.225	
6,300.0	6,129.6	6,197.6	6,197.6	28.4	13.8	136.58	41.2	10.9	1,303.5	1,273.6	29.87	43.634	
6,400.0	6,229.6	6,297.6	6,297.6	28.5	14.0	136.58	41.2	10.9	1,303.5	1,273.2	30.27	43.057	
6,500.0	6,329.6	6,397.6	6,397.6	28.6	14.3	136.58	41.2	10.9	1,303.5	1,272.8	30.68	42.493	

CC - Min centre to center distance or convergent point, SF - min separation factor, ES - min ellipse separation

Company:	Synergy Resources	Local Co-ordinate Reference:	Well SRC Pratt 31-29D
Project:	SEC.29-T1N-R68W	TVD Reference:	WELL @ 5225.0ft (Original Well Elev)
Reference Site:	SRC Pratt 41-29D Pad Sec.29-T1N-R68W	MD Reference:	WELL @ 5225.0ft (Original Well Elev)
Site Error:	0.0ft	North Reference:	True
Reference Well:	SRC Pratt 31-29D	Survey Calculation Method:	Minimum Curvature
Well Error:	0.0ft	Output errors are at	2.00 sigma
Reference Wellbore	Wellbore #1	Database:	Landmark
Reference Design:	Plan #1 (3-01-11)	Offset TVD Reference:	Offset Datum

Offset Design SRC Pratt 41-29D Pad Sec.29-T1N-R68W - M E Drier #1 (Exist.) - Wellbore #1 - Design #1												Offset Site Error:	0.0 ft
Survey Program: 0-MWD												Offset Well Error:	0.0 ft
Reference		Offset		Semi Major Axis			Distance						
Measured Depth (ft)	Vertical Depth (ft)	Measured Depth (ft)	Vertical Depth (ft)	Reference (ft)	Offset (ft)	Highside Toolface (°)	Offset Wellbore Centre +N/-S (ft)	+E/-W (ft)	Between Centres (ft)	Between Ellipses (ft)	Minimum Separation (ft)	Separation Factor	Warning
6,600.0	6,429.6	6,497.6	6,497.6	28.7	14.5	136.58	41.2	10.9	1,303.5	1,272.4	31.08	41.942	
6,700.0	6,529.6	6,597.6	6,597.6	28.8	14.7	136.58	41.2	10.9	1,303.5	1,272.0	31.48	41.404	
6,800.0	6,629.6	6,697.6	6,697.6	28.9	14.9	136.58	41.2	10.9	1,303.5	1,271.6	31.89	40.878	
6,900.0	6,729.6	6,797.6	6,797.6	29.0	15.2	136.58	41.2	10.9	1,303.5	1,271.2	32.29	40.364	
7,000.0	6,829.6	6,897.6	6,897.6	29.2	15.4	136.58	41.2	10.9	1,303.5	1,270.8	32.70	39.862	
7,100.0	6,929.6	6,997.6	6,997.6	29.3	15.6	136.58	41.2	10.9	1,303.5	1,270.4	33.11	39.370	
7,200.0	7,029.6	7,097.6	7,097.6	29.4	15.8	136.58	41.2	10.9	1,303.5	1,270.0	33.52	38.890	
7,300.0	7,129.6	7,197.6	7,197.6	29.5	16.1	136.58	41.2	10.9	1,303.5	1,269.6	33.93	38.420	
7,400.0	7,229.6	7,297.6	7,297.6	29.6	16.3	136.58	41.2	10.9	1,303.5	1,269.1	34.34	37.960	
7,500.0	7,329.6	7,397.6	7,397.6	29.7	16.5	136.58	41.2	10.9	1,303.5	1,268.7	34.75	37.511	
7,600.0	7,429.6	7,497.6	7,497.6	29.9	16.7	136.58	41.2	10.9	1,303.5	1,268.3	35.16	37.071	
7,700.0	7,529.6	7,597.6	7,597.6	30.0	16.9	136.58	41.2	10.9	1,303.5	1,267.9	35.58	36.640	
7,800.0	7,629.6	7,697.6	7,697.6	30.1	17.2	136.58	41.2	10.9	1,303.5	1,267.5	35.99	36.218	
7,900.0	7,729.6	7,797.6	7,797.6	30.2	17.4	136.58	41.2	10.9	1,303.5	1,267.1	36.40	35.805	
8,000.0	7,829.6	7,897.6	7,897.6	30.3	17.6	136.58	41.2	10.9	1,303.5	1,266.7	36.82	35.401	
8,100.0	7,929.6	7,997.6	7,997.6	30.5	17.8	136.58	41.2	10.9	1,303.5	1,266.2	37.24	35.005	
8,200.0	8,029.6	8,097.6	8,097.6	30.6	18.1	136.58	41.2	10.9	1,303.5	1,265.8	37.65	34.617	
8,300.0	8,129.6	8,197.6	8,197.6	30.7	18.3	136.58	41.2	10.9	1,303.5	1,265.4	38.07	34.238	
8,330.4	8,160.0	8,228.0	8,228.0	30.8	18.4	136.58	41.2	10.9	1,303.5	1,265.3	38.20	34.124	
8,331.2	8,160.8	8,228.8	8,228.8	30.8	18.4	136.58	41.2	10.9	1,303.5	1,265.3	38.20	34.121	

Company:	Synergy Resources	Local Co-ordinate Reference:	Well SRC Pratt 31-29D
Project:	SEC.29-T1N-R68W	TVD Reference:	WELL @ 5225.0ft (Original Well Elev)
Reference Site:	SRC Pratt 41-29D Pad Sec.29-T1N-R68W	MD Reference:	WELL @ 5225.0ft (Original Well Elev)
Site Error:	0.0ft	North Reference:	True
Reference Well:	SRC Pratt 31-29D	Survey Calculation Method:	Minimum Curvature
Well Error:	0.0ft	Output errors are at	2.00 sigma
Reference Wellbore	Wellbore #1	Database:	Landmark
Reference Design:	Plan #1 (3-01-11)	Offset TVD Reference:	Offset Datum

Offset Design													Offset Site Error:	0.0ft
Survey Program: 0-MWD													Offset Well Error:	0.0ft
Reference		Offset		Semi Major Axis			Distance							Warning
Measured Depth (ft)	Vertical Depth (ft)	Measured Depth (ft)	Vertical Depth (ft)	Reference (ft)	Offset (ft)	Highside Toolface (°)	Offset Wellbore Centre +N/-S (ft)	+E/-W (ft)	Between Centres (ft)	Between Ellipses (ft)	Minimum Separation (ft)	Separation Factor		
0.0	0.0	0.0	0.0	0.0	0.0	-151.92	-17.9	-9.5	20.3					
100.0	100.0	99.0	99.0	0.1	0.1	-151.92	-17.9	-9.5	20.2	20.0	0.19	103.979		
200.0	200.0	199.0	199.0	0.3	0.3	-151.92	-17.9	-9.5	20.2	19.6	0.64	31.472		
278.9	278.9	277.9	277.9	0.5	0.5	-90.00	-17.9	-9.5	20.2	19.2	0.99	20.336 CC		
300.0	300.0	299.0	299.0	0.5	0.5	-91.87	-17.9	-9.5	20.2	19.1	1.09	18.593 ES		
400.0	399.8	398.8	398.8	0.8	0.8	-106.22	-17.9	-9.5	21.0	19.5	1.54	13.654		
450.0	449.7	448.7	448.7	0.9	0.9	-115.83	-17.9	-9.5	22.5	20.7	1.78	12.639		
500.0	499.5	498.5	498.5	1.0	1.0	-130.75	-17.9	-9.5	25.1	23.1	2.02	12.430 SF		
600.0	598.8	597.8	597.8	1.3	1.2	-151.85	-17.9	-9.5	34.4	31.9	2.50	13.788		
700.0	697.6	696.6	696.6	1.6	1.4	-163.92	-17.9	-9.5	48.4	45.4	2.96	16.318		
800.0	795.9	794.9	794.9	2.0	1.7	-170.79	-17.9	-9.5	66.2	62.8	3.43	19.323		
900.0	893.6	892.6	892.6	2.4	1.9	-174.88	-17.9	-9.5	87.6	83.7	3.89	22.535		
1,002.2	992.5	991.5	991.5	2.9	2.1	-177.47	-17.9	-9.5	113.0	108.7	4.36	25.918		
1,100.0	1,086.8	1,085.8	1,085.8	3.4	2.3	-177.94	-17.9	-9.5	139.1	134.2	4.82	28.827		
1,200.0	1,183.2	1,182.2	1,182.2	3.9	2.5	-178.27	-17.9	-9.5	165.7	160.4	5.30	31.244		
1,300.0	1,279.6	1,275.5	1,275.5	4.5	2.7	-178.26	-18.8	-9.7	192.9	187.2	5.76	33.474		
1,400.0	1,376.0	1,367.0	1,366.9	5.0	2.9	-177.64	-22.6	-10.6	222.1	215.8	6.22	35.723		
1,500.0	1,472.4	1,457.2	1,456.9	5.6	3.1	-176.63	-29.1	-12.0	253.1	246.5	6.68	37.918		
1,600.0	1,568.8	1,546.0	1,545.1	6.1	3.2	-175.40	-38.2	-13.9	286.2	279.1	7.15	40.029		
1,700.0	1,665.2	1,633.2	1,631.5	6.6	3.4	-174.05	-49.8	-16.5	321.3	313.7	7.64	42.051		
1,800.0	1,761.6	1,718.7	1,715.8	7.2	3.6	-172.64	-63.6	-19.5	358.5	350.4	8.15	43.986		
1,900.0	1,858.0	1,800.0	1,795.6	7.7	3.9	-171.27	-79.0	-22.8	397.8	389.2	8.67	45.878		
2,000.0	1,954.3	1,884.2	1,877.8	8.3	4.1	-169.84	-97.3	-26.8	439.2	430.0	9.23	47.600		
2,100.0	2,050.7	1,968.7	1,959.6	8.8	4.4	-168.44	-117.8	-31.2	482.6	472.8	9.81	49.208		
2,200.0	2,147.1	2,058.0	2,046.0	9.4	4.8	-167.17	-139.7	-36.0	526.4	516.0	10.40	50.597		
2,300.0	2,243.5	2,147.3	2,132.4	10.0	5.2	-166.09	-161.6	-40.7	570.4	559.4	11.01	51.786		
2,400.0	2,339.9	2,236.6	2,218.9	10.5	5.5	-165.17	-183.6	-45.5	614.6	602.9	11.62	52.872		
2,500.0	2,436.3	2,325.9	2,305.3	11.1	5.9	-164.37	-205.5	-50.3	658.8	646.6	12.24	53.822		
2,600.0	2,532.7	2,415.2	2,391.8	11.6	6.4	-163.67	-227.5	-55.0	703.2	690.3	12.86	54.669		
2,700.0	2,629.1	2,504.6	2,478.2	12.2	6.8	-163.05	-249.4	-59.8	747.6	734.1	13.49	55.428		
2,800.0	2,725.5	2,593.9	2,564.7	12.7	7.2	-162.50	-271.4	-64.5	792.1	778.0	14.12	56.110		
2,900.0	2,821.9	2,683.2	2,651.1	13.3	7.6	-162.01	-293.3	-69.3	836.6	821.9	14.75	56.728		
3,000.0	2,918.3	2,772.5	2,737.6	13.8	8.1	-161.57	-315.2	-74.1	881.2	865.8	15.38	57.290		
3,100.0	3,014.6	2,861.8	2,824.0	14.4	8.5	-161.17	-337.2	-78.8	925.8	909.8	16.02	57.803		
3,200.0	3,111.0	2,951.1	2,910.4	15.0	8.9	-160.80	-359.1	-83.6	970.5	953.8	16.65	58.273		
3,300.0	3,207.4	3,040.4	2,996.9	15.5	9.4	-160.47	-381.1	-88.4	1,015.2	997.9	17.29	58.706		
3,400.0	3,303.8	3,129.7	3,083.3	16.1	9.8	-160.17	-403.0	-93.1	1,059.9	1,042.0	17.93	59.105		
3,500.0	3,400.2	3,219.1	3,169.8	16.6	10.3	-159.89	-425.0	-97.9	1,104.6	1,086.0	18.57	59.473		
3,600.0	3,496.6	3,308.4	3,256.2	17.2	10.7	-159.63	-446.9	-102.7	1,149.4	1,130.2	19.22	59.815		
3,700.0	3,593.0	3,397.7	3,342.7	17.7	11.2	-159.40	-468.8	-107.4	1,194.1	1,174.3	19.86	60.133		
3,800.0	3,689.4	3,487.0	3,429.1	18.3	11.6	-159.18	-490.8	-112.2	1,238.9	1,218.4	20.50	60.429		
3,900.0	3,785.8	3,576.3	3,515.6	18.8	12.1	-158.97	-512.7	-116.9	1,283.7	1,262.6	21.15	60.705		
4,000.0	3,882.2	3,665.6	3,602.0	19.4	12.6	-158.78	-534.7	-121.7	1,328.5	1,306.7	21.79	60.964		
4,100.0	3,978.6	3,754.9	3,688.4	20.0	13.0	-158.60	-556.6	-126.5	1,373.4	1,350.9	22.44	61.206		
4,200.0	4,075.0	3,844.2	3,774.9	20.5	13.5	-158.43	-578.6	-131.2	1,418.2	1,395.1	23.08	61.434		
4,300.0	4,171.3	3,933.6	3,861.3	21.1	13.9	-158.28	-600.5	-136.0	1,463.0	1,439.3	23.73	61.648		
4,400.0	4,267.7	4,022.9	3,947.8	21.6	14.4	-158.13	-622.4	-140.8	1,507.9	1,483.5	24.38	61.850		
4,500.0	4,364.1	4,112.2	4,034.2	22.2	14.9	-157.99	-644.4	-145.5	1,552.7	1,527.7	25.03	62.041		
4,600.0	4,460.5	4,201.5	4,120.7	22.7	15.3	-157.86	-666.3	-150.3	1,597.6	1,571.9	25.68	62.221		
4,700.0	4,556.9	4,290.8	4,207.1	23.3	15.8	-157.73	-688.3	-155.0	1,642.5	1,616.1	26.33	62.391		
4,800.0	4,653.3	4,380.1	4,293.6	23.9	16.3	-157.61	-710.2	-159.8	1,687.3	1,660.4	26.97	62.552		
4,900.0	4,749.7	4,469.4	4,380.0	24.4	16.7	-157.50	-732.2	-164.6	1,732.2	1,704.6	27.62	62.705		

CC - Min centre to center distance or convergent point, SF - min separation factor, ES - min ellipse separation

Company:	Synergy Resources	Local Co-ordinate Reference:	Well SRC Pratt 31-29D
Project:	SEC.29-T1N-R68W	TVD Reference:	WELL @ 5225.0ft (Original Well Elev)
Reference Site:	SRC Pratt 41-29D Pad Sec.29-T1N-R68W	MD Reference:	WELL @ 5225.0ft (Original Well Elev)
Site Error:	0.0ft	North Reference:	True
Reference Well:	SRC Pratt 31-29D	Survey Calculation Method:	Minimum Curvature
Well Error:	0.0ft	Output errors are at	2.00 sigma
Reference Wellbore	Wellbore #1	Database:	Landmark
Reference Design:	Plan #1 (3-01-11)	Offset TVD Reference:	Offset Datum

Offset Design												Offset Site Error:	0.0ft
Survey Program: 0-MWD												Offset Well Error:	0.0ft
Reference		Offset		Semi Major Axis			Distance						Warning
Measured Depth (ft)	Vertical Depth (ft)	Measured Depth (ft)	Vertical Depth (ft)	Reference (ft)	Offset (ft)	Highside Toolface (°)	Offset Wellbore Centre +N/-S (ft)	+E/-W (ft)	Between Centres (ft)	Between Ellipses (ft)	Minimum Separation (ft)	Separation Factor	
5,000.0	4,846.1	4,558.8	4,466.4	25.0	17.2	-157.40	-754.1	-169.3	1,777.1	1,748.8	28.27	62.851	
5,100.0	4,942.5	4,648.1	4,552.9	25.5	17.7	-157.30	-776.0	-174.1	1,822.0	1,793.1	28.93	62.989	
5,198.4	5,037.3	4,736.0	4,638.0	26.1	18.1	-157.20	-797.6	-178.8	1,866.2	1,836.6	29.57	63.118	
5,200.0	5,038.9	4,737.4	4,639.3	26.1	18.1	-157.21	-798.0	-178.9	1,866.9	1,837.3	29.58	63.117	
5,300.0	5,135.7	4,827.4	4,726.5	26.5	18.6	-157.46	-820.1	-183.7	1,910.3	1,880.0	30.28	63.085	
5,400.0	5,233.4	4,968.7	4,863.5	26.9	19.2	-157.58	-853.6	-190.9	1,950.3	1,919.2	31.07	62.770	
5,500.0	5,331.7	5,196.7	5,087.6	27.2	19.9	-157.64	-894.4	-199.8	1,982.3	1,950.3	31.96	62.033	
5,600.0	5,430.6	5,436.2	5,325.8	27.5	20.4	-157.82	-918.4	-205.0	2,004.5	1,971.7	32.71	61.274	
5,700.0	5,530.0	5,639.5	5,529.0	27.7	20.7	-158.09	-923.5	-206.1	2,016.6	1,983.4	33.26	60.625	
5,800.0	5,629.7	5,739.2	5,628.7	27.9	20.8	-158.22	-923.5	-206.1	2,023.8	1,990.2	33.60	60.237	
5,900.0	5,729.6	5,839.1	5,728.6	28.0	20.9	-158.29	-923.5	-206.1	2,027.7	1,993.8	33.88	59.848	
5,970.4	5,800.0	5,909.5	5,799.0	28.1	21.0	160.45	-923.5	-206.1	2,028.5	1,994.4	34.05	59.566	
6,000.0	5,829.6	5,939.1	5,828.6	28.1	21.0	160.45	-923.5	-206.1	2,028.5	1,994.3	34.14	59.418	
6,100.0	5,929.6	6,039.1	5,928.6	28.2	21.2	160.45	-923.5	-206.1	2,028.5	1,994.0	34.44	58.897	
6,200.0	6,029.6	6,139.1	6,028.6	28.3	21.3	160.45	-923.5	-206.1	2,028.5	1,993.7	34.75	58.380	
6,300.0	6,129.6	6,239.1	6,128.6	28.4	21.4	160.45	-923.5	-206.1	2,028.5	1,993.4	35.05	57.866	
6,400.0	6,229.6	6,339.1	6,228.6	28.5	21.5	160.45	-923.5	-206.1	2,028.5	1,993.1	35.37	57.357	
6,500.0	6,329.6	6,439.1	6,328.6	28.6	21.6	160.45	-923.5	-206.1	2,028.5	1,992.8	35.68	56.851	
6,600.0	6,429.6	6,539.1	6,428.6	28.7	21.7	160.45	-923.5	-206.1	2,028.5	1,992.5	36.00	56.350	
6,700.0	6,529.6	6,639.1	6,528.6	28.8	21.9	160.45	-923.5	-206.1	2,028.5	1,992.2	36.32	55.854	
6,800.0	6,629.6	6,739.1	6,628.6	28.9	22.0	160.45	-923.5	-206.1	2,028.5	1,991.8	36.64	55.362	
6,900.0	6,729.6	6,839.1	6,728.6	29.0	22.1	160.45	-923.5	-206.1	2,028.5	1,991.5	36.97	54.874	
7,000.0	6,829.6	6,939.1	6,828.6	29.2	22.2	160.45	-923.5	-206.1	2,028.5	1,991.2	37.29	54.391	
7,100.0	6,929.6	7,039.1	6,928.6	29.3	22.4	160.45	-923.5	-206.1	2,028.5	1,990.9	37.62	53.914	
7,200.0	7,029.6	7,139.1	7,028.6	29.4	22.5	160.45	-923.5	-206.1	2,028.5	1,990.5	37.96	53.441	
7,300.0	7,129.6	7,239.1	7,128.6	29.5	22.6	160.45	-923.5	-206.1	2,028.5	1,990.2	38.29	52.973	
7,400.0	7,229.6	7,339.1	7,228.6	29.6	22.8	160.45	-923.5	-206.1	2,028.5	1,989.9	38.63	52.510	
7,500.0	7,329.6	7,439.1	7,328.6	29.7	22.9	160.45	-923.5	-206.1	2,028.5	1,989.5	38.97	52.051	
7,600.0	7,429.6	7,539.1	7,428.6	29.9	23.0	160.45	-923.5	-206.1	2,028.5	1,989.2	39.31	51.598	
7,700.0	7,529.6	7,639.1	7,528.6	30.0	23.2	160.45	-923.5	-206.1	2,028.5	1,988.8	39.66	51.150	
7,800.0	7,629.6	7,739.1	7,628.6	30.1	23.3	160.45	-923.5	-206.1	2,028.5	1,988.5	40.00	50.707	
7,900.0	7,729.6	7,839.1	7,728.6	30.2	23.4	160.45	-923.5	-206.1	2,028.5	1,988.1	40.35	50.270	
8,000.0	7,829.6	7,939.1	7,828.6	30.3	23.6	160.45	-923.5	-206.1	2,028.5	1,987.8	40.70	49.837	
8,100.0	7,929.6	8,039.1	7,928.6	30.5	23.7	160.45	-923.5	-206.1	2,028.5	1,987.4	41.06	49.409	
8,200.0	8,029.6	8,139.1	8,028.6	30.6	23.9	160.45	-923.5	-206.1	2,028.5	1,987.1	41.41	48.986	
8,300.0	8,129.6	8,239.1	8,128.6	30.7	24.0	160.45	-923.5	-206.1	2,028.5	1,986.7	41.77	48.569	
8,330.4	8,160.0	8,269.5	8,159.0	30.8	24.1	160.45	-923.5	-206.1	2,028.5	1,986.6	41.87	48.443	
8,331.2	8,160.8	8,270.3	8,159.8	30.8	24.1	160.45	-923.5	-206.1	2,028.5	1,986.6	41.88	48.440	

Company:	Synergy Resources	Local Co-ordinate Reference:	Well SRC Pratt 31-29D
Project:	SEC.29-T1N-R68W	TVD Reference:	WELL @ 5225.0ft (Original Well Elev)
Reference Site:	SRC Pratt 41-29D Pad Sec.29-T1N-R68W	MD Reference:	WELL @ 5225.0ft (Original Well Elev)
Site Error:	0.0ft	North Reference:	True
Reference Well:	SRC Pratt 31-29D	Survey Calculation Method:	Minimum Curvature
Well Error:	0.0ft	Output errors are at	2.00 sigma
Reference Wellbore	Wellbore #1	Database:	Landmark
Reference Design:	Plan #1 (3-01-11)	Offset TVD Reference:	Offset Datum

Offset Design												Offset Site Error:	0.0ft
Survey Program: 0-MWD												Offset Well Error:	0.0ft
Reference		Offset		Semi Major Axis			Distance						
Measured Depth (ft)	Vertical Depth (ft)	Measured Depth (ft)	Vertical Depth (ft)	Reference (ft)	Offset (ft)	Highside Toolface (°)	Offset Wellbore Centre +N/-S (ft)	+E/-W (ft)	Between Centres (ft)	Between Ellipses (ft)	Minimum Separation (ft)	Separation Factor	Warning
0.0	0.0	3.0	3.0	0.0	0.0	27.86	17.5	9.2	19.8				
100.0	100.0	103.0	103.0	0.1	0.1	27.86	17.5	9.2	19.8	19.6	0.20	97.771	
200.0	200.0	203.0	203.0	0.3	0.3	27.86	17.5	9.2	19.8	19.1	0.65	30.366	
268.5	268.5	271.5	271.5	0.5	0.5	97.78	16.9	9.9	19.7	18.8	0.94	20.884 CC	
300.0	300.0	303.0	303.0	0.5	0.5	103.19	16.3	10.7	19.8	18.7	1.08	18.363 ES	
400.0	399.8	402.3	402.2	0.8	0.8	129.56	12.9	14.7	23.3	21.7	1.53	15.223 SF	
450.0	449.7	451.5	451.2	0.9	0.9	142.93	10.4	17.7	28.2	26.4	1.78	15.873	
500.0	499.5	500.0	499.5	1.0	1.0	148.25	7.4	21.2	35.4	33.4	2.02	17.541	
600.0	598.8	596.1	594.8	1.3	1.3	155.97	-0.2	30.1	56.0	53.5	2.51	22.284	
700.0	697.6	689.3	687.0	1.6	1.6	160.26	-9.4	41.1	84.0	81.0	3.00	28.006	
800.0	795.9	782.8	779.1	2.0	1.9	162.70	-19.8	53.4	117.6	114.2	3.48	33.835	
900.0	893.6	875.3	870.1	2.4	2.3	164.10	-30.1	65.6	154.7	150.8	3.93	39.346	
1,002.2	992.5	968.4	961.9	2.9	2.6	165.04	-40.5	77.8	196.0	191.6	4.40	44.561	
1,100.0	1,086.8	1,056.9	1,049.0	3.4	3.0	167.05	-50.3	89.5	237.2	232.4	4.85	48.954	
1,200.0	1,183.2	1,147.3	1,138.0	3.9	3.3	168.49	-60.4	101.4	279.6	274.3	5.31	52.641	
1,300.0	1,279.6	1,237.7	1,227.1	4.5	3.7	169.56	-70.5	113.3	322.0	316.2	5.78	55.680	
1,400.0	1,376.0	1,328.1	1,316.1	5.0	4.1	170.38	-80.5	125.2	364.5	358.2	6.26	58.212	
1,500.0	1,472.4	1,418.5	1,405.2	5.6	4.4	171.03	-90.6	137.1	407.1	400.3	6.74	60.377	
1,600.0	1,568.8	1,508.9	1,494.3	6.1	4.8	171.55	-100.7	149.0	449.6	442.4	7.23	62.227	
1,700.0	1,665.2	1,599.3	1,583.3	6.6	5.1	171.99	-110.7	160.9	492.3	484.5	7.71	63.824	
1,800.0	1,761.6	1,689.7	1,672.4	7.2	5.5	172.35	-120.8	172.8	534.9	526.7	8.20	65.215	
1,900.0	1,858.0	1,780.1	1,761.4	7.7	5.9	172.66	-130.9	184.7	577.5	568.8	8.69	66.436	
2,000.0	1,954.3	1,870.5	1,850.5	8.3	6.2	172.93	-140.9	196.6	620.2	611.0	9.19	67.517	
2,100.0	2,050.7	1,960.9	1,939.5	8.8	6.6	173.17	-151.0	208.5	662.9	653.2	9.68	68.479	
2,200.0	2,147.1	2,051.4	2,028.6	9.4	7.0	173.37	-161.1	220.4	705.6	695.4	10.18	69.340	
2,300.0	2,243.5	2,141.8	2,117.6	10.0	7.3	173.55	-171.1	232.3	748.2	737.6	10.67	70.115	
2,400.0	2,339.9	2,232.2	2,206.7	10.5	7.7	173.72	-181.2	244.2	790.9	779.8	11.17	70.816	
2,500.0	2,436.3	2,322.6	2,295.7	11.1	8.0	173.86	-191.3	256.1	833.6	822.0	11.67	71.452	
2,600.0	2,532.7	2,413.0	2,384.8	11.6	8.4	173.99	-201.3	268.0	876.3	864.2	12.17	72.032	
2,700.0	2,629.1	2,503.4	2,473.8	12.2	8.8	174.11	-211.4	279.9	919.0	906.4	12.67	72.563	
2,800.0	2,725.5	2,593.8	2,562.9	12.7	9.1	174.22	-221.5	291.8	961.7	948.6	13.17	73.050	
2,900.0	2,821.9	2,684.2	2,652.0	13.3	9.5	174.32	-231.5	303.7	1,004.4	990.8	13.67	73.499	
3,000.0	2,918.3	2,774.6	2,741.0	13.8	9.9	174.41	-241.6	315.6	1,047.1	1,033.0	14.17	73.914	
3,100.0	3,014.6	2,865.0	2,830.1	14.4	10.2	174.50	-251.7	327.5	1,089.9	1,075.2	14.67	74.298	
3,200.0	3,111.0	2,955.4	2,919.1	15.0	10.6	174.58	-261.7	339.4	1,132.6	1,117.4	15.17	74.655	
3,300.0	3,207.4	3,045.8	3,008.2	15.5	11.0	174.65	-271.8	351.3	1,175.3	1,159.6	15.67	74.987	
3,400.0	3,303.8	3,136.2	3,097.2	16.1	11.3	174.72	-281.9	363.2	1,218.0	1,201.8	16.18	75.296	
3,500.0	3,400.2	3,226.7	3,186.3	16.6	11.7	174.78	-291.9	375.1	1,260.7	1,244.0	16.68	75.586	
3,600.0	3,496.6	3,317.1	3,275.3	17.2	12.1	174.84	-302.0	387.0	1,303.4	1,286.3	17.18	75.857	
3,700.0	3,593.0	3,407.5	3,364.4	17.7	12.4	174.89	-312.1	398.9	1,346.2	1,328.5	17.69	76.112	
3,800.0	3,689.4	3,497.9	3,453.4	18.3	12.8	174.94	-322.1	410.9	1,388.9	1,370.7	18.19	76.351	
3,900.0	3,785.8	3,588.3	3,542.5	18.8	13.1	174.99	-332.2	422.8	1,431.6	1,412.9	18.70	76.575	
4,000.0	3,882.2	3,678.7	3,631.5	19.4	13.5	175.04	-342.3	434.7	1,474.3	1,455.1	19.20	76.787	
4,100.0	3,978.6	3,769.1	3,720.6	20.0	13.9	175.08	-352.3	446.6	1,517.1	1,497.4	19.71	76.988	
4,200.0	4,075.0	3,859.5	3,809.7	20.5	14.2	175.12	-362.4	458.5	1,559.8	1,539.6	20.21	77.177	
4,300.0	4,171.3	3,949.9	3,898.7	21.1	14.6	175.16	-372.5	470.4	1,602.5	1,581.8	20.72	77.356	
4,400.0	4,267.7	4,040.3	3,987.8	21.6	15.0	175.20	-382.5	482.3	1,645.2	1,624.0	21.22	77.525	
4,500.0	4,364.1	4,130.7	4,076.8	22.2	15.3	175.23	-392.6	494.2	1,688.0	1,666.2	21.73	77.686	
4,600.0	4,460.5	4,221.1	4,165.9	22.7	15.7	175.26	-402.7	506.1	1,730.7	1,708.5	22.23	77.839	
4,700.0	4,556.9	4,311.6	4,254.9	23.3	16.1	175.29	-412.7	518.0	1,773.4	1,750.7	22.74	77.984	
4,800.0	4,653.3	4,402.0	4,344.0	23.9	16.4	175.32	-422.8	529.9	1,816.1	1,792.9	23.25	78.122	
4,900.0	4,749.7	4,542.6	4,482.7	24.4	16.9	175.37	-437.8	547.6	1,858.5	1,834.7	23.84	77.951	

CC - Min centre to center distance or convergent point, SF - min separation factor, ES - min ellipse separation

Company:	Synergy Resources	Local Co-ordinate Reference:	Well SRC Pratt 31-29D
Project:	SEC.29-T1N-R68W	TVD Reference:	WELL @ 5225.0ft (Original Well Elev)
Reference Site:	SRC Pratt 41-29D Pad Sec.29-T1N-R68W	MD Reference:	WELL @ 5225.0ft (Original Well Elev)
Site Error:	0.0ft	North Reference:	True
Reference Well:	SRC Pratt 31-29D	Survey Calculation Method:	Minimum Curvature
Well Error:	0.0ft	Output errors are at	2.00 sigma
Reference Wellbore	Wellbore #1	Database:	Landmark
Reference Design:	Plan #1 (3-01-11)	Offset TVD Reference:	Offset Datum

Offset Design												Offset Site Error:	0.0 ft
Survey Program: 0-MWD												Offset Well Error:	0.0 ft
Reference		Offset		Semi Major Axis			Distance						
Measured Depth (ft)	Vertical Depth (ft)	Measured Depth (ft)	Vertical Depth (ft)	Reference (ft)	Offset (ft)	Highside Toolface (°)	Offset Wellbore Centre +N/-S (ft)	+E/-W (ft)	Between Centres (ft)	Between Ellipses (ft)	Minimum Separation (ft)	Separation Factor	Warning
5,000.0	4,846.1	4,811.8	4,750.5	25.0	17.5	175.49	-455.0	568.0	1,894.5	1,869.9	24.60	76.997	
5,100.0	4,942.5	5,006.9	4,945.5	25.5	17.7	175.61	-457.5	570.9	1,922.4	1,897.1	25.22	76.219	
5,198.4	5,037.3	5,101.7	5,040.3	26.1	17.9	175.67	-457.5	570.9	1,948.5	1,922.8	25.67	75.912	
5,200.0	5,038.9	5,103.3	5,041.9	26.1	17.9	175.67	-457.5	570.9	1,948.9	1,923.2	25.68	75.901	
5,300.0	5,135.7	5,200.1	5,138.7	26.5	18.0	175.76	-457.5	570.9	1,973.7	1,947.5	26.23	75.258	
5,400.0	5,233.4	5,297.8	5,236.4	26.9	18.1	175.84	-457.5	570.9	1,995.2	1,968.4	26.74	74.616	
5,500.0	5,331.7	5,396.1	5,334.7	27.2	18.2	175.91	-457.5	570.9	2,013.2	1,986.0	27.21	73.977	
5,600.0	5,430.6	5,495.0	5,433.6	27.5	18.3	175.96	-457.5	570.9	2,027.8	2,000.1	27.65	73.340	
5,700.0	5,530.0	5,594.4	5,533.0	27.7	18.5	175.99	-457.5	570.9	2,038.9	2,010.8	28.04	72.705	
5,800.0	5,629.7	5,694.1	5,632.7	27.9	18.6	176.02	-457.5	570.9	2,046.6	2,018.2	28.40	72.069	
5,900.0	5,729.6	5,794.0	5,732.6	28.0	18.7	176.03	-457.5	570.9	2,050.7	2,022.0	28.71	71.433	
5,970.4	5,800.0	5,864.4	5,803.0	28.1	18.8	134.79	-457.5	570.9	2,051.6	2,022.7	28.90	70.979	
6,000.0	5,829.6	5,894.0	5,832.6	28.1	18.8	134.79	-457.5	570.9	2,051.6	2,022.6	29.00	70.734	
6,100.0	5,929.6	5,994.0	5,932.6	28.2	19.0	134.79	-457.5	570.9	2,051.6	2,022.3	29.36	69.884	
6,200.0	6,029.6	6,094.0	6,032.6	28.3	19.1	134.79	-457.5	570.9	2,051.6	2,021.9	29.71	69.048	
6,300.0	6,129.6	6,194.0	6,132.6	28.4	19.2	134.79	-457.5	570.9	2,051.6	2,021.5	30.07	68.227	
6,400.0	6,229.6	6,294.0	6,232.6	28.5	19.4	134.79	-457.5	570.9	2,051.6	2,021.2	30.43	67.419	
6,500.0	6,329.6	6,394.0	6,332.6	28.6	19.5	134.79	-457.5	570.9	2,051.6	2,020.8	30.79	66.625	
6,600.0	6,429.6	6,494.0	6,432.6	28.7	19.7	134.79	-457.5	570.9	2,051.6	2,020.4	31.16	65.845	
6,700.0	6,529.6	6,594.0	6,532.6	28.8	19.8	134.79	-457.5	570.9	2,051.6	2,020.1	31.53	65.078	
6,800.0	6,629.6	6,694.0	6,632.6	28.9	19.9	134.79	-457.5	570.9	2,051.6	2,019.7	31.89	64.325	
6,900.0	6,729.6	6,794.0	6,732.6	29.0	20.1	134.79	-457.5	570.9	2,051.6	2,019.3	32.27	63.585	
7,000.0	6,829.6	6,894.0	6,832.6	29.2	20.2	134.79	-457.5	570.9	2,051.6	2,019.0	32.64	62.858	
7,100.0	6,929.6	6,994.0	6,932.6	29.3	20.4	134.79	-457.5	570.9	2,051.6	2,018.6	33.01	62.144	
7,200.0	7,029.6	7,094.0	7,032.6	29.4	20.5	134.79	-457.5	570.9	2,051.6	2,018.2	33.39	61.443	
7,300.0	7,129.6	7,194.0	7,132.6	29.5	20.7	134.79	-457.5	570.9	2,051.6	2,017.8	33.77	60.754	
7,400.0	7,229.6	7,294.0	7,232.6	29.6	20.8	134.79	-457.5	570.9	2,051.6	2,017.5	34.15	60.077	
7,500.0	7,329.6	7,394.0	7,332.6	29.7	21.0	134.79	-457.5	570.9	2,051.6	2,017.1	34.53	59.413	
7,600.0	7,429.6	7,494.0	7,432.6	29.9	21.1	134.79	-457.5	570.9	2,051.6	2,016.7	34.92	58.760	
7,700.0	7,529.6	7,594.0	7,532.6	30.0	21.3	134.79	-457.5	570.9	2,051.6	2,016.3	35.30	58.119	
7,800.0	7,629.6	7,694.0	7,632.6	30.1	21.5	134.79	-457.5	570.9	2,051.6	2,015.9	35.69	57.489	
7,900.0	7,729.6	7,794.0	7,732.6	30.2	21.6	134.79	-457.5	570.9	2,051.6	2,015.5	36.07	56.871	
8,000.0	7,829.6	7,894.0	7,832.6	30.3	21.8	134.79	-457.5	570.9	2,051.6	2,015.1	36.46	56.263	
8,100.0	7,929.6	7,994.0	7,932.6	30.5	21.9	134.79	-457.5	570.9	2,051.6	2,014.8	36.86	55.667	
8,200.0	8,029.6	8,094.0	8,032.6	30.6	22.1	134.79	-457.5	570.9	2,051.6	2,014.4	37.25	55.081	
8,300.0	8,129.6	8,194.0	8,132.6	30.7	22.3	134.79	-457.5	570.9	2,051.6	2,014.0	37.64	54.505	
8,307.7	8,137.3	8,201.7	8,140.3	30.7	22.3	134.79	-457.5	570.9	2,051.6	2,013.9	37.67	54.461	
8,330.4	8,160.0	8,211.4	8,150.0	30.8	22.3	134.79	-457.5	570.9	2,051.6	2,013.9	37.73	54.371	
8,331.2	8,160.8	8,211.4	8,150.0	30.8	22.3	134.79	-457.5	570.9	2,051.7	2,013.9	37.74	54.370	

Reference Depths are relative to WELL @ 5225.0ft (Original Well Elev) Coordinates are relative to: SRC Pratt 31-29D
Offset Depths are relative to Offset Datum Coordinate System is US State Plane 1983, Colorado Northern Zone
Central Meridian is -105.500000 ° Grid Convergence at Surface is: 0.31°



Company:	Synergy Resources	Local Co-ordinate Reference:	Well SRC Pratt 31-29D
Project:	SEC.29-T1N-R68W	TVD Reference:	WELL @ 5225.0ft (Original Well Elev)
Reference Site:	SRC Pratt 41-29D Pad Sec.29-T1N-R68W	MD Reference:	WELL @ 5225.0ft (Original Well Elev)
Site Error:	0.0ft	North Reference:	True
Reference Well:	SRC Pratt 31-29D	Survey Calculation Method:	Minimum Curvature
Well Error:	0.0ft	Output errors are at	2.00 sigma
Reference Wellbore	Wellbore #1	Database:	Landmark
Reference Design:	Plan #1 (3-01-11)	Offset TVD Reference:	Offset Datum

Reference Depths are relative to WELL @ 5225.0ft (Original Well Elev) Coordinates are relative to: SRC Pratt 31-29D
Offset Depths are relative to Offset Datum Coordinate System is US State Plane 1983, Colorado Northern Zone
Central Meridian is -105.500000 ° Grid Convergence at Surface is: 0.31°

