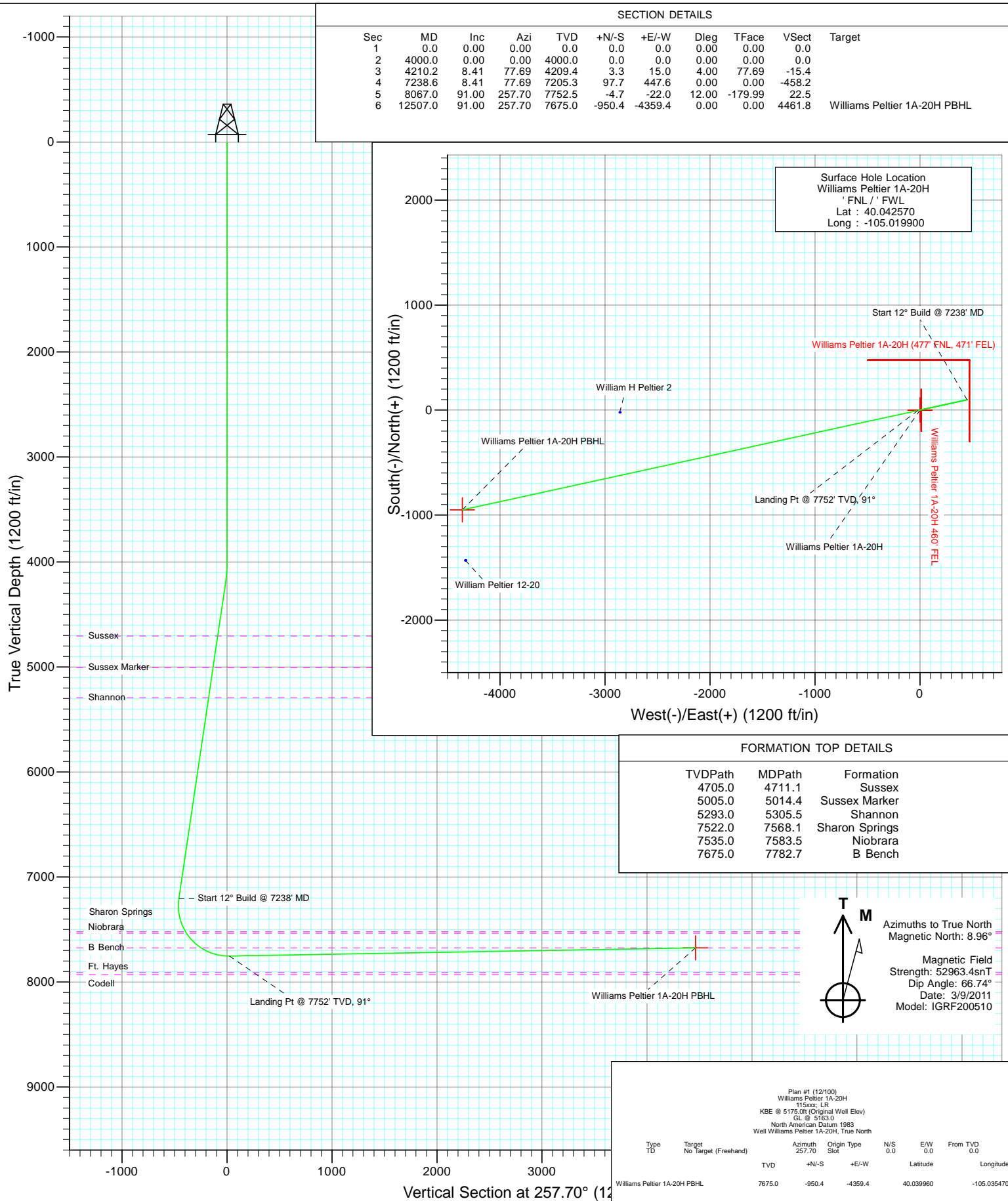


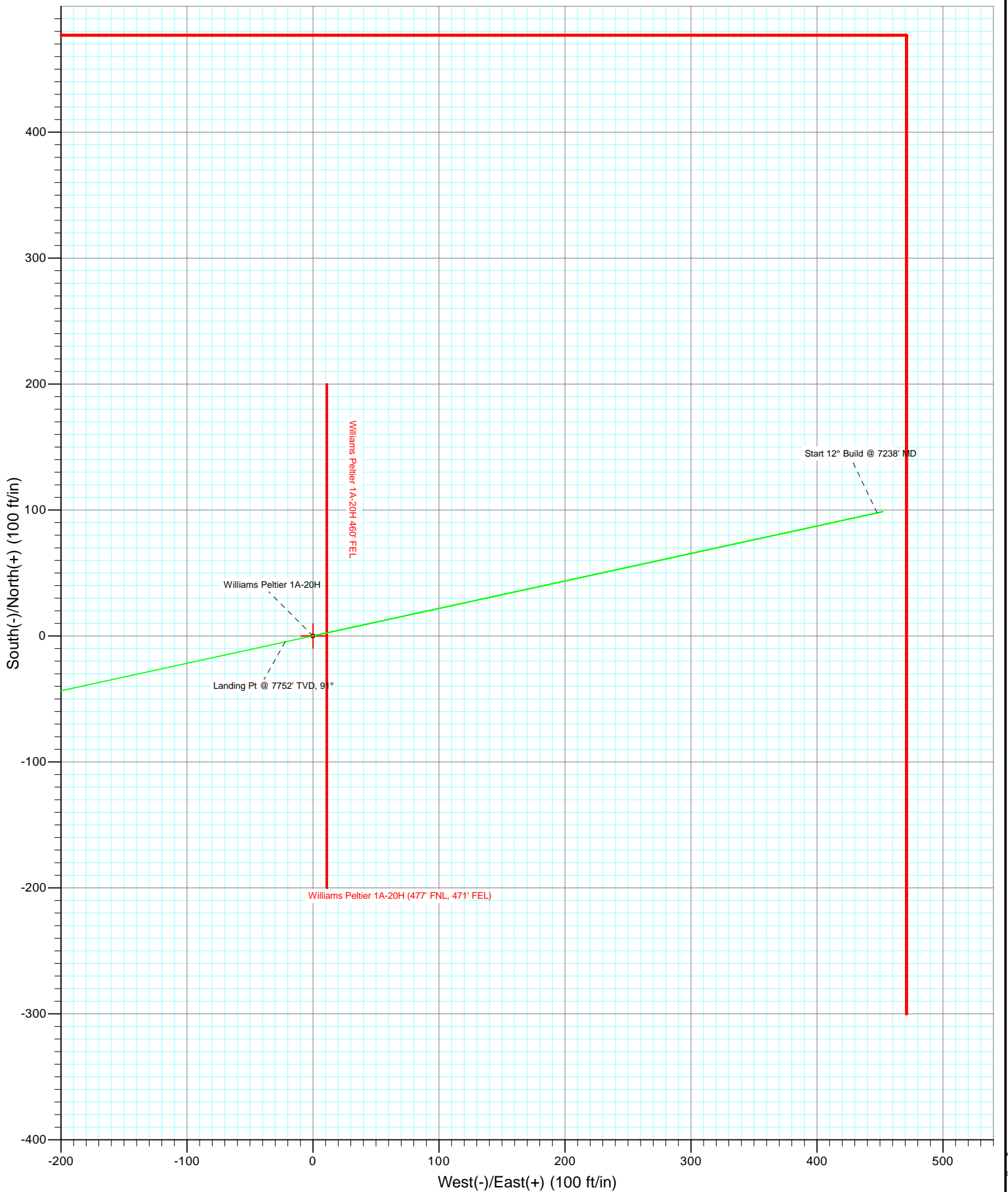


Project: DJ Wattenberg
Site: NENE S20-T1N-R68W
Well: Williams Peltier 1A-20H
Wellbore: Hz
Design: Plan #1 (12/100)



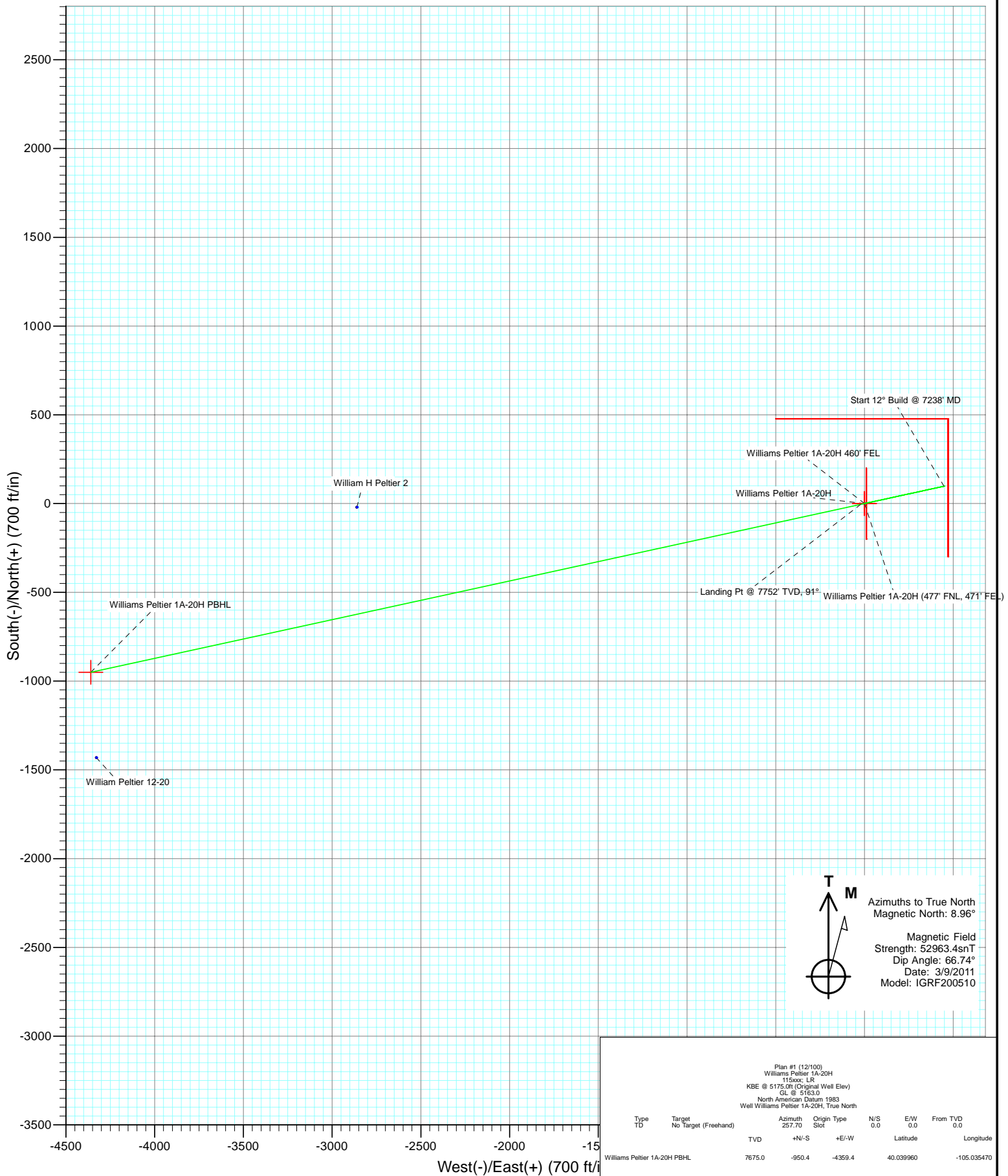


Project: DJ Wattenberg
Site: NENE S20-T1N-R68W
Well: Williams Peltier 1A-20H
Wellbore: Hz
Design: Plan #1 (12/100)





Project: DJ Wattenberg
Site: NENE S20-T1N-R68W
Well: Williams Peltier 1A-20H
Wellbore: Hz
Design: Plan #1 (12/100)



Planning Report

Database:	EDM 5000.1 US Multi Users DB	Local Co-ordinate Reference:	Well Williams Peltier 1A-20H
Company:	EnCana Oil & Gas (USA) Inc	TVD Reference:	KBE @ 5175.0ft (Original Well Elev)
Project:	DJ Wattenberg	MD Reference:	KBE @ 5175.0ft (Original Well Elev)
Site:	NENE S20-T1N-R68W	North Reference:	True
Well:	Williams Peltier 1A-20H	Survey Calculation Method:	Minimum Curvature
Wellbore:	Hz		
Design:	Plan #1		

Project	DJ Wattenberg		
Map System:	US State Plane 1983	System Datum:	Mean Sea Level
Geo Datum:	North American Datum 1983		
Map Zone:	Colorado Northern Zone		

Site		NENE S20-T1N-R68W			
Site Position:		Northing:	1,258,720.40 ft	Latitude:	40.042570
From:	Lat/Long	Easting:	3,134,423.39 ft	Longitude:	-105.019900
Position Uncertainty:	0.0 ft	Slot Radius:	13.200 in	Grid Convergence:	0.31 °

Well	Williams Peltier 1A-20H					
Well Position	+N/-S	0.0 ft	Northing:	1,258,720.40 ft	Latitude:	40.042570
	+E/-W	0.0 ft	Easting:	3,134,423.39 ft	Longitude:	-105.019900
Position Uncertainty		0.0 ft	Wellhead Elevation:	ft	Ground Level:	5,163.0 ft

Wellbore	Hz				
Magnetics	Model Name	Sample Date	Declination (°)	Dip Angle (°)	Field Strength (nT)
	IGRF200510	3/9/2011	8.96	66.74	52,963

Design	Plan #1			
Audit Notes:				
Version:	Phase:	PLAN	Tie On Depth:	0.0
Vertical Section:	Depth From (TVD) (ft)	+N/-S (ft)	+E/-W (ft)	Direction (°)
	0.0	0.0	0.0	257.70

Plan Sections										
Measured Depth (ft)	Inclination (°)	Azimuth (°)	Vertical Depth (ft)	+N/-S (ft)	+E/-W (ft)	Dogleg Rate (°/100ft)	Build Rate (°/100ft)	Turn Rate (°/100ft)	TFO (°)	Target
0.0	0.00	0.00	0.0	0.0	0.0	0.00	0.00	0.00	0.00	
4,000.0	0.00	0.00	4,000.0	0.0	0.0	0.00	0.00	0.00	0.00	
4,210.2	8.41	77.69	4,209.4	3.3	15.0	4.00	4.00	0.00	77.69	
7,238.6	8.41	77.69	7,205.3	97.7	447.6	0.00	0.00	0.00	0.00	
8,067.0	91.00	257.70	7,752.5	-4.7	-22.0	12.00	9.97	-21.73	-179.99	
12,507.0	91.00	257.70	7,675.0	-950.4	-4,359.4	0.00	0.00	0.00	0.00	Williams Peltier 1A-20H

Planning Report

Database:	EDM 5000.1 US Multi Users DB	Local Co-ordinate Reference:	Well Williams Peltier 1A-20H
Company:	EnCana Oil & Gas (USA) Inc	TVD Reference:	KBE @ 5175.0ft (Original Well Elev)
Project:	DJ Wattenberg	MD Reference:	KBE @ 5175.0ft (Original Well Elev)
Site:	NENE S20-T1N-R68W	North Reference:	True
Well:	Williams Peltier 1A-20H	Survey Calculation Method:	Minimum Curvature
Wellbore:	Hz		
Design:	Plan #1		

Planned Survey									
Measured Depth (ft)	Inclination (°)	Azimuth (°)	Vertical Depth (ft)	+N/-S (ft)	+E/-W (ft)	Vertical Section (ft)	Dogleg Rate (°/100ft)	Build Rate (°/100ft)	Comments / Formations
0.0	0.00	0.00	0.0	0.0	0.0	0.0	0.00	0.00	Williams Peltier 1A-20H (477' FNL, 471' FEL)
100.0	0.00	0.00	100.0	0.0	0.0	0.0	0.00	0.00	
200.0	0.00	0.00	200.0	0.0	0.0	0.0	0.00	0.00	
300.0	0.00	0.00	300.0	0.0	0.0	0.0	0.00	0.00	
400.0	0.00	0.00	400.0	0.0	0.0	0.0	0.00	0.00	
500.0	0.00	0.00	500.0	0.0	0.0	0.0	0.00	0.00	
600.0	0.00	0.00	600.0	0.0	0.0	0.0	0.00	0.00	
700.0	0.00	0.00	700.0	0.0	0.0	0.0	0.00	0.00	
800.0	0.00	0.00	800.0	0.0	0.0	0.0	0.00	0.00	
900.0	0.00	0.00	900.0	0.0	0.0	0.0	0.00	0.00	
1,000.0	0.00	0.00	1,000.0	0.0	0.0	0.0	0.00	0.00	
1,100.0	0.00	0.00	1,100.0	0.0	0.0	0.0	0.00	0.00	
1,200.0	0.00	0.00	1,200.0	0.0	0.0	0.0	0.00	0.00	
1,300.0	0.00	0.00	1,300.0	0.0	0.0	0.0	0.00	0.00	
1,400.0	0.00	0.00	1,400.0	0.0	0.0	0.0	0.00	0.00	
1,500.0	0.00	0.00	1,500.0	0.0	0.0	0.0	0.00	0.00	
1,600.0	0.00	0.00	1,600.0	0.0	0.0	0.0	0.00	0.00	
1,700.0	0.00	0.00	1,700.0	0.0	0.0	0.0	0.00	0.00	
1,800.0	0.00	0.00	1,800.0	0.0	0.0	0.0	0.00	0.00	
1,900.0	0.00	0.00	1,900.0	0.0	0.0	0.0	0.00	0.00	
2,000.0	0.00	0.00	2,000.0	0.0	0.0	0.0	0.00	0.00	
2,100.0	0.00	0.00	2,100.0	0.0	0.0	0.0	0.00	0.00	
2,200.0	0.00	0.00	2,200.0	0.0	0.0	0.0	0.00	0.00	
2,300.0	0.00	0.00	2,300.0	0.0	0.0	0.0	0.00	0.00	
2,400.0	0.00	0.00	2,400.0	0.0	0.0	0.0	0.00	0.00	
2,500.0	0.00	0.00	2,500.0	0.0	0.0	0.0	0.00	0.00	
2,600.0	0.00	0.00	2,600.0	0.0	0.0	0.0	0.00	0.00	
2,700.0	0.00	0.00	2,700.0	0.0	0.0	0.0	0.00	0.00	
2,800.0	0.00	0.00	2,800.0	0.0	0.0	0.0	0.00	0.00	
2,900.0	0.00	0.00	2,900.0	0.0	0.0	0.0	0.00	0.00	
3,000.0	0.00	0.00	3,000.0	0.0	0.0	0.0	0.00	0.00	
3,100.0	0.00	0.00	3,100.0	0.0	0.0	0.0	0.00	0.00	
3,200.0	0.00	0.00	3,200.0	0.0	0.0	0.0	0.00	0.00	
3,300.0	0.00	0.00	3,300.0	0.0	0.0	0.0	0.00	0.00	
3,400.0	0.00	0.00	3,400.0	0.0	0.0	0.0	0.00	0.00	
3,500.0	0.00	0.00	3,500.0	0.0	0.0	0.0	0.00	0.00	
3,600.0	0.00	0.00	3,600.0	0.0	0.0	0.0	0.00	0.00	
3,700.0	0.00	0.00	3,700.0	0.0	0.0	0.0	0.00	0.00	
3,800.0	0.00	0.00	3,800.0	0.0	0.0	0.0	0.00	0.00	
3,900.0	0.00	0.00	3,900.0	0.0	0.0	0.0	0.00	0.00	
4,000.0	0.00	0.00	4,000.0	0.0	0.0	0.0	0.00	0.00	KOP @ 4000'
4,100.0	4.00	77.69	4,099.9	0.7	3.4	-3.5	4.00	4.00	EOB; Inc=8.41°
4,200.0	8.00	77.69	4,199.4	3.0	13.6	-13.9	4.00	4.00	
4,210.2	8.41	77.69	4,209.4	3.3	15.0	-15.4	4.00	4.00	
4,300.0	8.41	77.69	4,298.3	6.1	27.9	-28.5	0.00	0.00	Sussex
4,400.0	8.41	77.69	4,397.2	9.2	42.2	-43.1	0.00	0.00	
4,500.0	8.41	77.69	4,496.1	12.3	56.4	-57.8	0.00	0.00	
4,600.0	8.41	77.69	4,595.1	15.4	70.7	-72.4	0.00	0.00	
4,700.0	8.41	77.69	4,694.0	18.6	85.0	-87.0	0.00	0.00	
4,711.1	8.41	77.69	4,705.0	18.9	86.6	-88.6	0.00	0.00	
4,800.0	8.41	77.69	4,792.9	21.7	99.3	-101.6	0.00	0.00	
4,900.0	8.41	77.69	4,891.8	24.8	113.6	-116.2	0.00	0.00	

Planning Report

Database:	EDM 5000.1 US Multi Users DB	Local Co-ordinate Reference:	Well Williams Peltier 1A-20H
Company:	EnCana Oil & Gas (USA) Inc	TVD Reference:	KBE @ 5175.0ft (Original Well Elev)
Project:	DJ Wattenberg	MD Reference:	KBE @ 5175.0ft (Original Well Elev)
Site:	NENE S20-T1N-R68W	North Reference:	True
Well:	Williams Peltier 1A-20H	Survey Calculation Method:	Minimum Curvature
Wellbore:	Hz		
Design:	Plan #1		

Planned Survey									
Measured Depth (ft)	Inclination (°)	Azimuth (°)	Vertical Depth (ft)	+N/-S (ft)	+E/-W (ft)	Vertical Section (ft)	Dogleg Rate (°/100ft)	Build Rate (°/100ft)	Comments / Formations
5,000.0	8.41	77.69	4,990.8	27.9	127.9	-130.9	0.00	0.00	
5,014.4	8.41	77.69	5,005.0	28.4	129.9	-133.0	0.00	0.00	Sussex Marker
5,100.0	8.41	77.69	5,089.7	31.0	142.1	-145.5	0.00	0.00	
5,200.0	8.41	77.69	5,188.6	34.1	156.4	-160.1	0.00	0.00	
5,300.0	8.41	77.69	5,287.5	37.3	170.7	-174.7	0.00	0.00	
5,305.5	8.41	77.69	5,293.0	37.4	171.5	-175.5	0.00	0.00	Shannon
5,400.0	8.41	77.69	5,386.5	40.4	185.0	-189.3	0.00	0.00	
5,500.0	8.41	77.69	5,485.4	43.5	199.3	-204.0	0.00	0.00	
5,600.0	8.41	77.69	5,584.3	46.6	213.6	-218.6	0.00	0.00	
5,700.0	8.41	77.69	5,683.2	49.7	227.8	-233.2	0.00	0.00	
5,800.0	8.41	77.69	5,782.2	52.9	242.1	-247.8	0.00	0.00	
5,900.0	8.41	77.69	5,881.1	56.0	256.4	-262.5	0.00	0.00	
6,000.0	8.41	77.69	5,980.0	59.1	270.7	-277.1	0.00	0.00	
6,100.0	8.41	77.69	6,078.9	62.2	285.0	-291.7	0.00	0.00	
6,200.0	8.41	77.69	6,177.9	65.3	299.3	-306.3	0.00	0.00	
6,300.0	8.41	77.69	6,276.8	68.4	313.5	-320.9	0.00	0.00	
6,400.0	8.41	77.69	6,375.7	71.6	327.8	-335.6	0.00	0.00	
6,500.0	8.41	77.69	6,474.6	74.7	342.1	-350.2	0.00	0.00	
6,600.0	8.41	77.69	6,573.6	77.8	356.4	-364.8	0.00	0.00	
6,700.0	8.41	77.69	6,672.5	80.9	370.7	-379.4	0.00	0.00	
6,800.0	8.41	77.69	6,771.4	84.0	385.0	-394.0	0.00	0.00	
6,900.0	8.41	77.69	6,870.3	87.2	399.3	-408.7	0.00	0.00	
7,000.0	8.41	77.69	6,969.3	90.3	413.5	-423.3	0.00	0.00	
7,100.0	8.41	77.69	7,068.2	93.4	427.8	-437.9	0.00	0.00	
7,200.0	8.41	77.69	7,167.1	96.5	442.1	-452.5	0.00	0.00	
7,238.6	8.41	77.69	7,205.3	97.7	447.6	-458.2	0.00	0.00	Start 12° Build @ 7238' MD
7,300.0	1.04	77.58	7,266.5	98.8	452.6	-463.2	12.00	-12.00	
7,400.0	10.96	257.71	7,365.9	97.0	444.1	-454.6	12.00	9.93	
7,500.0	22.96	257.71	7,461.4	90.8	415.7	-425.5	12.00	12.00	
7,568.1	31.14	257.70	7,522.0	84.2	385.4	-394.5	12.00	12.00	Sharon Springs
7,583.5	32.98	257.70	7,535.0	82.4	377.5	-386.4	12.00	12.00	Niobrara
7,600.0	34.96	257.70	7,548.7	80.5	368.4	-377.1	12.00	12.00	
7,700.0	46.96	257.70	7,624.1	66.5	304.5	-311.7	12.00	12.00	
7,782.7	56.88	257.70	7,675.0	52.7	241.0	-246.7	12.00	12.00	B Bench
7,800.0	58.96	257.70	7,684.2	49.6	226.6	-232.0	12.00	12.00	
7,900.0	70.96	257.70	7,726.4	30.3	138.3	-141.6	12.00	12.00	
8,000.0	82.96	257.70	7,749.0	9.6	43.3	-44.3	12.00	12.00	
8,067.0	91.00	257.70	7,752.5	-4.7	-22.0	22.5	12.00	12.00	Landing Pt @ 7752' TVD, 91°
8,100.0	91.00	257.70	7,751.9	-11.7	-54.3	55.5	0.00	0.00	
8,200.0	91.00	257.70	7,750.2	-33.0	-152.0	155.5	0.00	0.00	
8,300.0	91.00	257.70	7,748.4	-54.3	-249.7	255.5	0.00	0.00	
8,400.0	91.00	257.70	7,746.7	-75.6	-347.4	355.5	0.00	0.00	
8,500.0	91.00	257.70	7,744.9	-96.9	-445.0	455.5	0.00	0.00	
8,600.0	91.00	257.70	7,743.2	-118.2	-542.7	555.5	0.00	0.00	
8,700.0	91.00	257.70	7,741.4	-139.5	-640.4	655.4	0.00	0.00	
8,800.0	91.00	257.70	7,739.7	-160.8	-738.1	755.4	0.00	0.00	
8,900.0	91.00	257.70	7,738.0	-182.1	-835.8	855.4	0.00	0.00	
9,000.0	91.00	257.70	7,736.2	-203.4	-933.5	955.4	0.00	0.00	
9,100.0	91.00	257.70	7,734.5	-224.7	-1,031.2	1,055.4	0.00	0.00	
9,200.0	91.00	257.70	7,732.7	-246.0	-1,128.9	1,155.4	0.00	0.00	
9,300.0	91.00	257.70	7,731.0	-267.3	-1,226.6	1,255.3	0.00	0.00	
9,400.0	91.00	257.70	7,729.2	-288.6	-1,324.2	1,355.3	0.00	0.00	

Planning Report

Database:	EDM 5000.1 US Multi Users DB	Local Co-ordinate Reference:	Well Williams Peltier 1A-20H
Company:	EnCana Oil & Gas (USA) Inc	TVD Reference:	KBE @ 5175.0ft (Original Well Elev)
Project:	DJ Wattenberg	MD Reference:	KBE @ 5175.0ft (Original Well Elev)
Site:	NENE S20-T1N-R68W	North Reference:	True
Well:	Williams Peltier 1A-20H	Survey Calculation Method:	Minimum Curvature
Wellbore:	Hz		
Design:	Plan #1		

Planned Survey

Measured Depth (ft)	Inclination (°)	Azimuth (°)	Vertical Depth (ft)	+N/-S (ft)	+E/-W (ft)	Vertical Section (ft)	Dogleg Rate (°/100ft)	Build Rate (°/100ft)	Comments / Formations
9,500.0	91.00	257.70	7,727.5	-309.9	-1,421.9	1,455.3	0.00	0.00	
9,600.0	91.00	257.70	7,725.7	-331.2	-1,519.6	1,555.3	0.00	0.00	
9,700.0	91.00	257.70	7,724.0	-352.5	-1,617.3	1,655.3	0.00	0.00	
9,800.0	91.00	257.70	7,722.2	-373.8	-1,715.0	1,755.3	0.00	0.00	
9,900.0	91.00	257.70	7,720.5	-395.1	-1,812.7	1,855.3	0.00	0.00	
10,000.0	91.00	257.70	7,718.8	-416.4	-1,910.4	1,955.2	0.00	0.00	
10,100.0	91.00	257.70	7,717.0	-437.7	-2,008.1	2,055.2	0.00	0.00	
10,200.0	91.00	257.70	7,715.3	-459.0	-2,105.8	2,155.2	0.00	0.00	
10,300.0	91.00	257.70	7,713.5	-480.3	-2,203.5	2,255.2	0.00	0.00	
10,400.0	91.00	257.70	7,711.8	-501.6	-2,301.1	2,355.2	0.00	0.00	
10,500.0	91.00	257.70	7,710.0	-522.9	-2,398.8	2,455.2	0.00	0.00	
10,600.0	91.00	257.70	7,708.3	-544.2	-2,496.5	2,555.1	0.00	0.00	
10,700.0	91.00	257.70	7,706.5	-565.5	-2,594.2	2,655.1	0.00	0.00	
10,800.0	91.00	257.70	7,704.8	-586.8	-2,691.9	2,755.1	0.00	0.00	
10,900.0	91.00	257.70	7,703.0	-608.1	-2,789.6	2,855.1	0.00	0.00	
11,000.0	91.00	257.70	7,701.3	-629.4	-2,887.3	2,955.1	0.00	0.00	
11,100.0	91.00	257.70	7,699.6	-650.7	-2,985.0	3,055.1	0.00	0.00	
11,200.0	91.00	257.70	7,697.8	-672.0	-3,082.7	3,155.1	0.00	0.00	
11,300.0	91.00	257.70	7,696.1	-693.3	-3,180.4	3,255.0	0.00	0.00	
11,400.0	91.00	257.70	7,694.3	-714.6	-3,278.0	3,355.0	0.00	0.00	
11,500.0	91.00	257.70	7,692.6	-735.9	-3,375.7	3,455.0	0.00	0.00	
11,600.0	91.00	257.70	7,690.8	-757.2	-3,473.4	3,555.0	0.00	0.00	
11,700.0	91.00	257.70	7,689.1	-778.5	-3,571.1	3,655.0	0.00	0.00	
11,800.0	91.00	257.70	7,687.3	-799.8	-3,668.8	3,755.0	0.00	0.00	
11,900.0	91.00	257.70	7,685.6	-821.1	-3,766.5	3,855.0	0.00	0.00	
12,000.0	91.00	257.70	7,683.8	-842.4	-3,864.2	3,954.9	0.00	0.00	
12,100.0	91.00	257.70	7,682.1	-863.7	-3,961.9	4,054.9	0.00	0.00	
12,200.0	91.00	257.70	7,680.4	-885.0	-4,059.6	4,154.9	0.00	0.00	
12,300.0	91.00	257.70	7,678.6	-906.3	-4,157.2	4,254.9	0.00	0.00	
12,400.0	91.00	257.70	7,676.9	-927.6	-4,254.9	4,354.9	0.00	0.00	
12,500.0	91.00	257.70	7,675.1	-948.9	-4,352.6	4,454.9	0.00	0.00	
12,507.0	91.00	257.70	7,675.0	-950.4	-4,359.4	4,461.8	0.00	0.00	TD at 12507.0 - Williams Peltier 1A-20H PBHL

Targets

Target Name - hit/miss target - Shape	Dip Angle (°)	Dip Dir. (°)	TVD (ft)	+N/-S (ft)	+E/-W (ft)	Northing (ft)	Easting (ft)	Latitude	Longitude
Williams Peltier 1A-20H - plan hits target center - Point	0.00	0.00	7,675.0	-950.4	-4,359.4	1,257,746.43	3,130,069.16	40.039960	-105.035470
Williams Peltier 1A-20H - plan misses target center by 7675.0ft at 0.0ft MD (0.0 TVD, 0.0 N, 0.0 E) - Polygon	0.00	0.00	-7,675.0	0.0	0.0	1,258,720.40	3,134,423.39	40.042570	-105.019900
Point 1			-7,675.0	477.0	471.0	1,259,199.94	3,134,891.80		
Point 2			-7,675.0	477.0	-500.0	1,259,194.68	3,133,920.82		
Point 3			-7,675.0	477.0	471.0	1,259,199.94	3,134,891.80		
Point 4			-7,675.0	-300.0	471.0	1,258,422.95	3,134,896.01		

Planning Report

Database:	EDM 5000.1 US Multi Users DB	Local Co-ordinate Reference:	Well Williams Peltier 1A-20H
Company:	EnCana Oil & Gas (USA) Inc	TVD Reference:	KBE @ 5175.0ft (Original Well Elev)
Project:	DJ Wattenberg	MD Reference:	KBE @ 5175.0ft (Original Well Elev)
Site:	NENE S20-T1N-R68W	North Reference:	True
Well:	Williams Peltier 1A-20H	Survey Calculation Method:	Minimum Curvature
Wellbore:	Hz		
Design:	Plan #1		

Formations						
Measured Depth (ft)	Vertical Depth (ft)	Name	Lithology	Dip (°)	Dip Direction (°)	
4,711.1	4,705.0	Sussex				
5,014.4	5,005.0	Sussex Marker				
5,305.5	5,293.0	Shannon				
7,568.1	7,522.0	Sharon Springs				
7,583.5	7,535.0	Niobrara				
7,782.7	7,675.0	B Bench				

Plan Annotations					
Measured Depth (ft)	Vertical Depth (ft)	Local Coordinates			
		+N/-S (ft)	+E/-W (ft)	Comment	
4,000.0	4,000.0	0.0	0.0	KOP @ 4000'	
4,210.2	4,209.4	3.3	15.0	EOB; Inc=8.41°	
7,238.6	7,205.3	97.7	447.6	Start 12° Build @ 7238' MD	
8,067.0	7,752.5	-4.7	-22.0	Landing Pt @ 7752' TVD, 91°	
12,507.0	7,675.0	-950.4	-4,359.4	TD at 12507.0	

EnCana Oil & Gas (USA) Inc

DJ Wattenberg

NENE S20-T1N-R68W

Williams Peltier 1A-20H

Hz

Plan #1 (12/100)

Anticollision Report

11 March, 2011

Cathedral Energy Services

Anticollision Report

Company:	EnCana Oil & Gas (USA) Inc	Local Co-ordinate Reference:	Well Williams Peltier 1A-20H
Project:	DJ Wattenberg	TVD Reference:	KBE @ 5175.0ft (Original Well Elev)
Reference Site:	NENE S20-T1N-R68W	MD Reference:	KBE @ 5175.0ft (Original Well Elev)
Site Error:	0.0ft	North Reference:	True
Reference Well:	Williams Peltier 1A-20H	Survey Calculation Method:	Minimum Curvature
Well Error:	0.0ft	Output errors are at	2.00 sigma
Reference Wellbore	Hz	Database:	EDM 5000.1 US Multi Users DB
Reference Design:	Plan #1 (12/100)	Offset TVD Reference:	Offset Datum

Reference	Plan #1 (12/100)		
Filter type:	NO GLOBAL FILTER: Using user defined selection & filtering criteria		
Interpolation Method:	MD Interval 100.0ft	Error Model:	Systematic Ellipse
Depth Range:	Unlimited	Scan Method:	Closest Approach 3D
Results Limited by:	Maximum center-center distance of 500.0ft	Error Surface:	Elliptical Conic
Warning Levels Evaluated at:	2.00 Sigma		

Survey Tool Program	Date	3/11/2011		
From (ft)	To (ft)	Survey (Wellbore)	Tool Name	Description
0.0	12,506.5	Plan #1 (12/100) (Hz)	MWD	Geolink MWD

Summary						
Site Name	Reference Measured Depth (ft)	Offset Measured Depth (ft)	Distance Between Centres (ft)	Distance Between Ellipses (ft)	Separation Factor	Warning
Offset Well - Wellbore - Design						
NENE S20-T1N-R68W						
William H Peltier 2 - Vh - Plan #1						Out of range
William Peltier 12-20 - Vh - Plan #1	12,507.0	7,675.0	481.8	353.7	3.761	CC, ES, SF

Offset Design												NENE S20-T1N-R68W - William Peltier 12-20 - Vh - Plan #1		Offset Site Error:		0.0 ft	
Survey Program:		0-MWD										Offset Well Error:		0.0 ft			
Reference		Offset		Semi Major Axis			Distance										
Measured Depth (ft)	Vertical Depth (ft)	Measured Depth (ft)	Vertical Depth (ft)	Reference (ft)	Offset (ft)	Highside Toolface (°)	Offset Wellbore Centre +N/-S (ft)	+E/-W (ft)	Between Centres (ft)	Between Ellipses (ft)	Total Uncertainty Axis	Separation Factor	Warning				
12,500.0	7,675.1	7,675.1	7,675.1	114.6	13.4	-90.17	-1,431.2	-4,328.7	482.9	355.0	127.95	3.774					
12,507.0	7,675.0	7,675.0	7,675.0	114.7	13.4	-90.15	-1,431.2	-4,328.7	481.8	353.7	128.12	3.761	CC, ES, SF				

Cathedral Energy Services

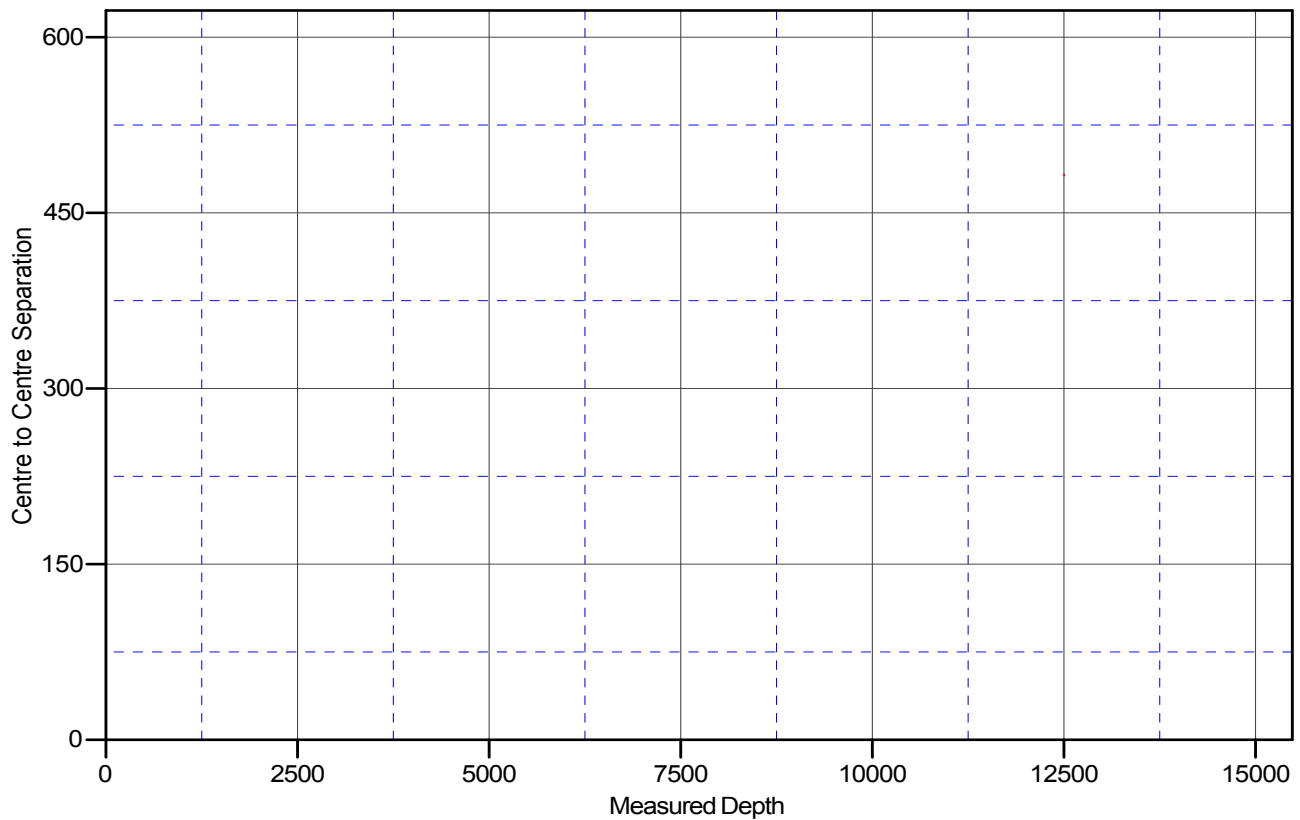
Anticollision Report

Company:	EnCana Oil & Gas (USA) Inc	Local Co-ordinate Reference:	Well Williams Peltier 1A-20H
Project:	DJ Wattenberg	TVD Reference:	KBE @ 5175.0ft (Original Well Elev)
Reference Site:	NENE S20-T1N-R68W	MD Reference:	KBE @ 5175.0ft (Original Well Elev)
Site Error:	0.0ft	North Reference:	True
Reference Well:	Williams Peltier 1A-20H	Survey Calculation Method:	Minimum Curvature
Well Error:	0.0ft	Output errors are at	2.00 sigma
Reference Wellbore	Hz	Database:	EDM 5000.1 US Multi Users DB
Reference Design:	Plan #1 (12/100)	Offset TVD Reference:	Offset Datum


Reference Depths are relative to KBE @ 5175.0ft (Original Well Elev)
Offset Depths are relative to Offset Datum
Central Meridian is -105.500000 °

Coordinates are relative to: Williams Peltier 1A-20H
Coordinate System is US State Plane 1983, Colorado Northern Zone
Grid Convergence at Surface is: 0.31°

Ladder Plot



LEGEND

 William Peltier 12-20, Vh, Plan #1 V0