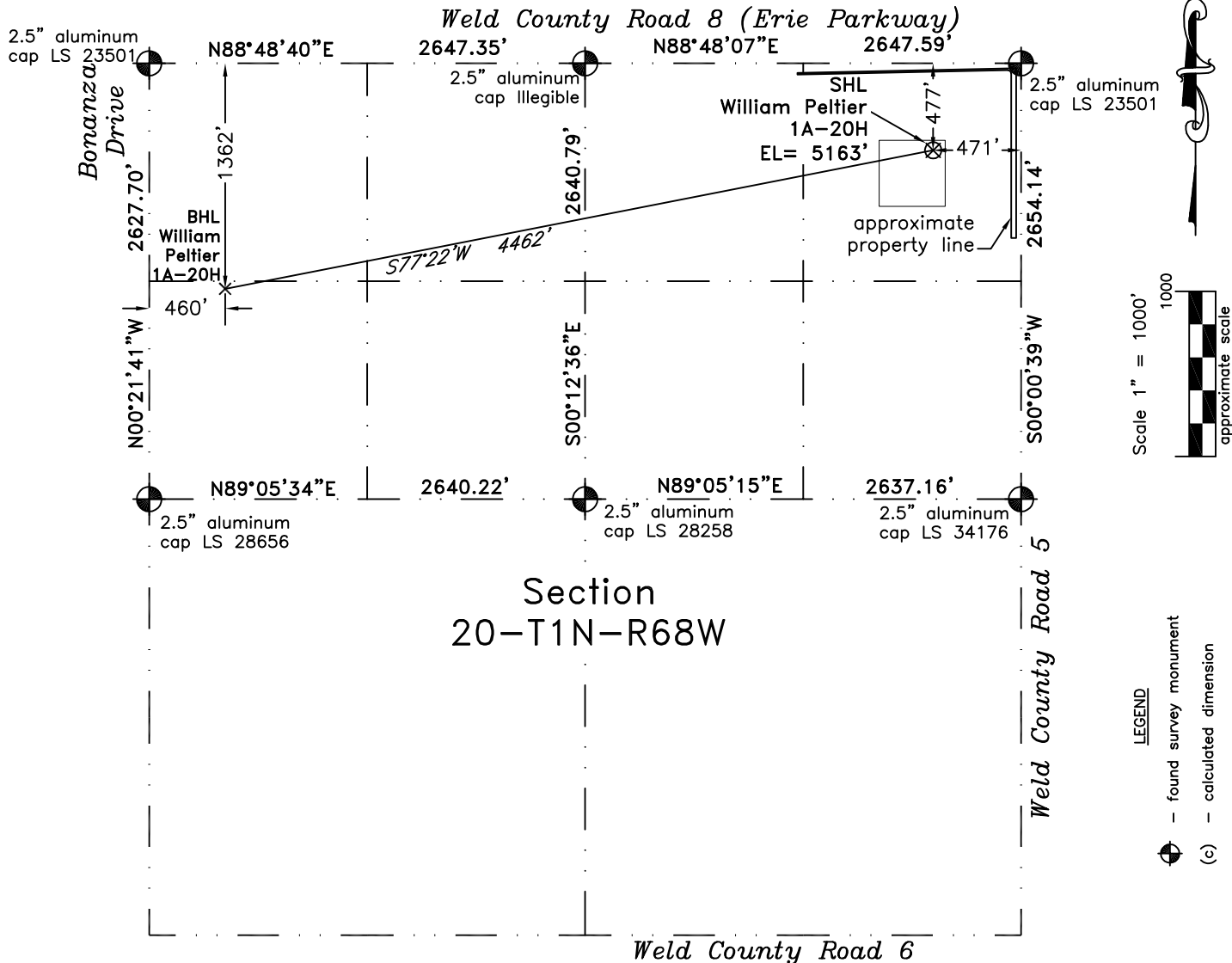


PLS Group, LLC
109 Coronado Ct. - Bldg. 7
Fort Collins, Colorado 80525

WELL LOCATION CERTIFICATE

THIS MAP DOES NOT
REPRESENT A BOUNDARY SURVEY



In accordance with a request from Dan Nelson of EnCana Oil & Gas (USA) Inc., PLS Group, LLC has determined the location of the **William Peltier 1A-20H** well site to be SHL: 477' FNL and 471' FEL, (BHL 1362' FNL and 460' FWL) as measured at ninety (90) degrees from the section lines of Section 20, Township 1 North, Range 68 West, 6th Principal Meridian, Town of Erie, County of Weld, CO.

Proposed Surface Hole Data:

Latitude: N 40.04257° BHL(40.03996°)

Longitude: W 105.01990° BHL(105.03547°)

PDOP: 1.2

Nearest: Building 1507' northeast

Above Ground Utility 589' northwest

Public Road 447' east

Railroad 6,670' northwest

Property Line 411' east

Well Window: SHL is 10' inside

Existing Well: William Peltier #2 2840' west

Notes:

- 1) Bearings and distances based on NAD 83 Colorado North State Plane Coordinates using RTK GPS observations taken 2/24/11 by operator Craig Burke.
- 2) Conversion factor to ground (1.000279397).
- 3) Elevations based on NAVD 88 GPS heights and Geoid 2003 corrections.
- 4) See improvement map for visible improvements within 400 feet.
- 5) The surface use is agricultural field.

NOTICE: According to Colorado law you must commence any legal action based upon any defect in this W.L.C. within three years after you first discover such defect. In no event may any action based upon any defect in this W.L.C. be commenced more than ten years from this said date of the certification shown hereon.

I hereby certify that this Well Location Certificate was prepared by me or under my direct supervision on 2/25/11 for and on behalf of EnCana Oil & Gas (USA) Inc. That it is not a Land Survey Plat or an Improvement Survey Plat and that it is not to be relied upon for establishment of fences, buildings, or other future improvement lines.

John Robert McGehee LS#38219
Well: William Peltier 1A-20H WLC