
NOBLE ENERGY INC E-BUSINESS

**Federal 6-44C
PARACHUTE
Garfield County , Colorado**

Cement Surface Casing
08-Sep-2010

Post Job Report

The Road to Excellence Starts with Safety

Sold To #: 345242	Ship To #: 2804020	Quote #:	Sales Order #: 7610504
Customer: NOBLE ENERGY INC E-BUSINESS	Customer Rep: WILKERSON, KENNY		
Well Name: Federal	Well #: 6-44C	API/UWI #: 05-045-19280	
Field: PARACHUTE	City (SAP): PARACHUTE	County/Parish: Garfield	State: Colorado
Lat: N 39.382 deg. OR N 39 deg. 22 min. 54.163 secs.	Long: W 108.026 deg. OR W -109 deg. 58 min. 25.59 secs.		
Contractor: H&P 322	Rig/Platform Name/Num: H&P 322		
Job Purpose: Cement Surface Casing			
Well Type: Development Well	Job Type: Cement Surface Casing		
Sales Person: METLI, MARSHALL	Srv Supervisor: HONE, AARON	MBU ID Emp #: 381285	

Job Personnel

HES Emp Name	Exp Hrs	Emp #	HES Emp Name	Exp Hrs	Emp #	HES Emp Name	Exp Hrs	Emp #
HONE, AARON D	6.5	381285	JENKINS, DEMON Lashaun	6.5	457892	PRUITT, BRAD	6.5	475748
SIMINEO, JEROD M	6.5	479954	WEAVER, CARLTON Russell	6.5	457698			

Equipment

HES Unit #	Distance-1 way	HES Unit #	Distance-1 way	HES Unit #	Distance-1 way	HES Unit #	Distance-1 way
10744648C	60 mile	10867094	60 mile	10897925	60 mile	10998508	60 mile
11259886	60 mile						

Job Hours

Date	On Location Hours	Operating Hours	Date	On Location Hours	Operating Hours	Date	On Location Hours	Operating Hours
9/8/10	6.5	3						

TOTAL	Total is the sum of each column separately							
-------	--	--	--	--	--	--	--	--

Job

Formation Name					Date	Time	Time Zone	
Formation Depth (MD)	Top		Bottom		Called Out	08 - Sep - 2010	12:00	MST
Form Type			BHST		On Location	08 - Sep - 2010	16:00	MST
Job depth MD	1508. ft		Job Depth TVD	1508. ft	Job Started	08 - Sep - 2010	19:40	MST
Water Depth			Wk Ht Above Floor	. ft	Job Completed	08 - Sep - 2010	20:50	MST
Perforation Depth (MD)	From		To		Departed Loc	08 - Sep - 2010	22:30	MST

Well Data

Description	New / Used	Max pressure psig	Size in	ID in	Weight lbm/ft	Thread	Grade	Top MD ft	Bottom MD ft	Top TVD ft	Bottom TVD ft
-------------	------------	-------------------	---------	-------	---------------	--------	-------	-----------	--------------	------------	---------------

Sales/Rental/3rd Party (HES)

Description	Qty	Qty uom	Depth	Supplier
PLUG,CMTG,TOP,8 5/8,HWE,7.20 MIN/8.09 MA	1	EA		
ADC (AUTO DENSITY CTRL) SYS, /JOB,ZI	1	JOB		
PORT. DAS W/CEMWIN;ACQUIRE W/HES, ZI	1	JOB		
R/A DENSOMETER W/CHART RECORDER,/JOB,ZI	1	JOB		

Tools and Accessories

Type	Size	Qty	Make	Depth	Type	Size	Qty	Make	Depth	Type	Size	Qty	Make
Guide Shoe					Packer					Top Plug	8.625	1	
Float Shoe					Bridge Plug					Bottom Plug			
Float Collar					Retainer					SSR plug set			
Insert Float										Plug Container			
Stage Tool										Centralizers		13	

Miscellaneous Materials

Gelling Agt	Conc	Surfactant	Conc	Acid Type	Qty	Conc	%
Treatment Fld	Conc	Inhibitor	Conc	Sand Type	Size	Qty	

Fluid Data									
Stage/Plug #: 1									
Fluid #	Stage Type	Fluid Name	Qty	Qty uom	Mixing Density lbm/gal	Yield ft ³ /sk	Mix Fluid Gal/sk	Rate bbl/min	Total Mix Fluid Gal/sk
1	WATER SPACER		20.00	bbl	8.33	.0	.0	.0	
2	Lead Cement	VERSACEM (TM) SYSTEM (452010)	190.0	sacks	12.3	2.38	13.75		13.75
	13.75 Gal	FRESH WATER							
3	Tail Cement	VERSACEM (TM) SYSTEM (452010)	117.0	sacks	12.8	2.11	11.75		11.75
	11.75 Gal	FRESH WATER							
4	DISPLACEMENT		93.2	bbl	8.33	.0	.0	.0	
Calculated Values		Pressures		Volumes					
Displacement	93.2	Shut In: Instant		Lost Returns	0	Cement Slurry	124.5	Pad	
Top Of Cement	SURFACE	5 Min		Cement Returns	6	Actual Displacement	89.4	Treatment	
Frac Gradient		15 Min		Spacers	20	Load and Breakdown		Total Job	
Rates									
Circulating	7	Mixing	6	Displacement	6	Avg. Job	6		
Cement Left In Pipe	Amount	42.78ft	Reason	Shoe Joint					
Frac Ring # 1 @	ID	Frac ring # 2 @	ID	Frac Ring # 3 @	ID	Frac Ring # 4 @	ID		
The Information Stated Herein Is Correct				Customer Representative Signature					

The Road to Excellence Starts with Safety

Sold To #: 345242		Ship To #: 2804020		Quote #:		Sales Order #: 7610504	
Customer: NOBLE ENERGY INC E-BUSINESS				Customer Rep: WILKERSON, KENNY			
Well Name: Federal			Well #: 6-44C			API/UWI #: 05-045-19280	
Field: PARACHUTE		City (SAP): PARACHUTE		County/Parish: Garfield		State: Colorado	
Legal Description:							
Lat: N 39.382 deg. OR N 39 deg. 22 min. 54.163 secs.				Long: W 108.026 deg. OR W -109 deg. 58 min. 25.59 secs.			
Contractor: H&P 322			Rig/Platform Name/Num: H&P 322				
Job Purpose: Cement Surface Casing						Ticket Amount:	
Well Type: Development Well			Job Type: Cement Surface Casing				
Sales Person: METLI, MARSHALL			Srvc Supervisor: HONE, AARON			MBU ID Emp #: 381285	

Activity Description	Date/Time	Cht #	Rate bbl/min	Volume bbl		Pressure psig		Comments
				Stage	Total	Tubing	Casing	
Call Out	09/08/2010 12:00							
Pre-Convoy Safety Meeting	09/08/2010 14:20							
Crew Leave Yard	09/08/2010 14:30							
Arrive At Loc	09/08/2010 16:00							RIG RUNNING CASING.
Assessment Of Location Safety Meeting	09/08/2010 16:10							
Pre-Rig Up Safety Meeting	09/08/2010 16:20							OFF LINE CEMENT JOB.
Rig-Up Equipment	09/08/2010 16:30							
Pre-Job Safety Meeting	09/08/2010 19:20							
Start Job	09/08/2010 19:40							HOLE- 12 1/4" TD- 1518' CASING- 8 5/8" 24# J-55. TP- 1508' SJ- 42.78' MUD-9.2#
Test Lines	09/08/2010 19:44							2815 PSI.
Pump Spacer	09/08/2010 19:49		6	20			175.0	FRESH WATER
Pump Lead Cement	09/08/2010 19:57		6	80.5			186.0	VERSACEM- 190 SKS, 12.3, 2.38, 13.75
Pump Tail Cement	09/08/2010 20:10		6	44			133.0	VERSACEM- 117 SKS, 12.8, 2.11, 11.75
Shutdown	09/08/2010 20:18							REMOVE SWEDGE
Drop Top Plug	09/08/2010 20:23							PLUG AWAY.
Pump Displacement	09/08/2010 20:25		6	93.2			403.0	FRESH WATER.
Slow Rate	09/08/2010 20:39		3	83			322.0	

Sold To # : 345242

Ship To # :2804020

Quote # :

Sales Order # :

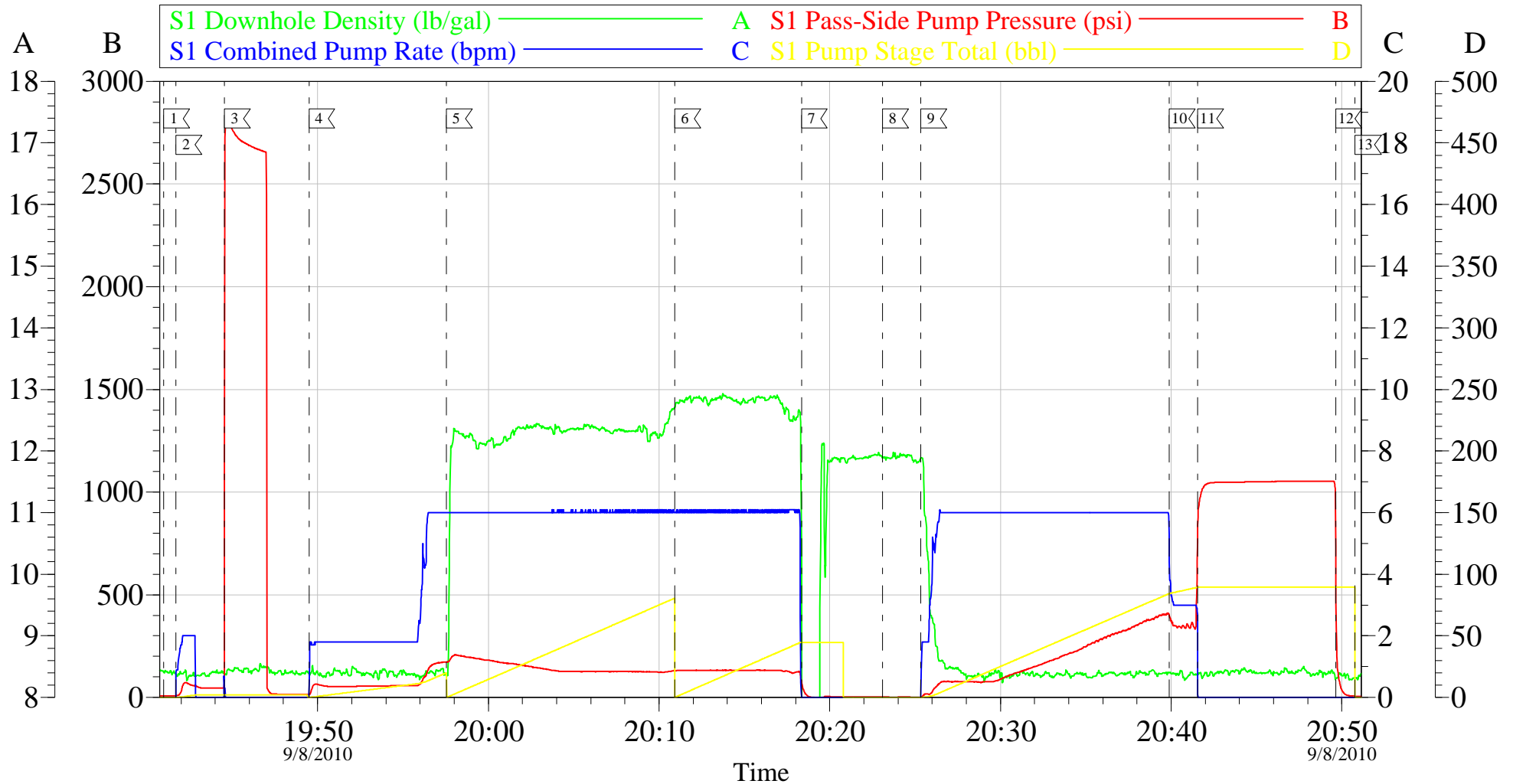
7610504

Cementing Job Log

Activity Description	Date/Time	Cht #	Rate bbl/min	Volume bbl		Pressure psig		Comments
				Stage	Total	Tubing	Casing	
Bump Plug	09/08/2010 20:41		3	89.4			400.0	PLUG LANDED 3.8 BBLS EARLY. PUMPED TO 1038 PSI.
Check Floats	09/08/2010 20:49							FLOATS HELD
End Job	09/08/2010 20:50							GOOD RETURNS THROUGHOUT JOB. 6 BBLS. CEMENT TO SURFACE.
Post-Job Safety Meeting (Pre Rig-Down)	09/08/2010 21:00							
Rig-Down Equipment	09/08/2010 21:10							
Pre-Convoy Safety Meeting	09/08/2010 22:20							
Crew Leave Location	09/08/2010 22:30							THANK YOU FOR USING HALLIBURTON.

NOBLE

8 5/8" SURFACE



Local Event Log			
1	START JOB	19:40:59	2
2	FILL LINES	19:41:41	3
3	TEST LINES	19:44:32	4
4	PUMP SPACER	19:49:30	5
5	PUMP LEAD CEMENT	19:57:32	6
6	PUMP TAIL CEMENT	20:10:55	7
7	SHUT DOWN	20:18:21	8
8	DROP PLUG	20:23:05	9
9	PUMP DISPLACEMENT	20:25:20	10
10	SLOW RATE	20:39:53	11
11	BUMP PLUG	20:41:33	12
12	CHECK FLOATS	20:49:38	13
13	END JOB	20:50:47	

Customer: NOBLE	Job Date: 08-Sep-2010	Sales Order #: 7610504
Well Description: FED 6-44C	Job Type: SURFACE	ADC Used: YES
Company Rep: KENNY WILKERSON	Cement Supervisor: AARON HONE	Elite # / Operator: 6/ RUSTY WEAVER

OptiCem v6.3.4
08-Sep-10 21:24