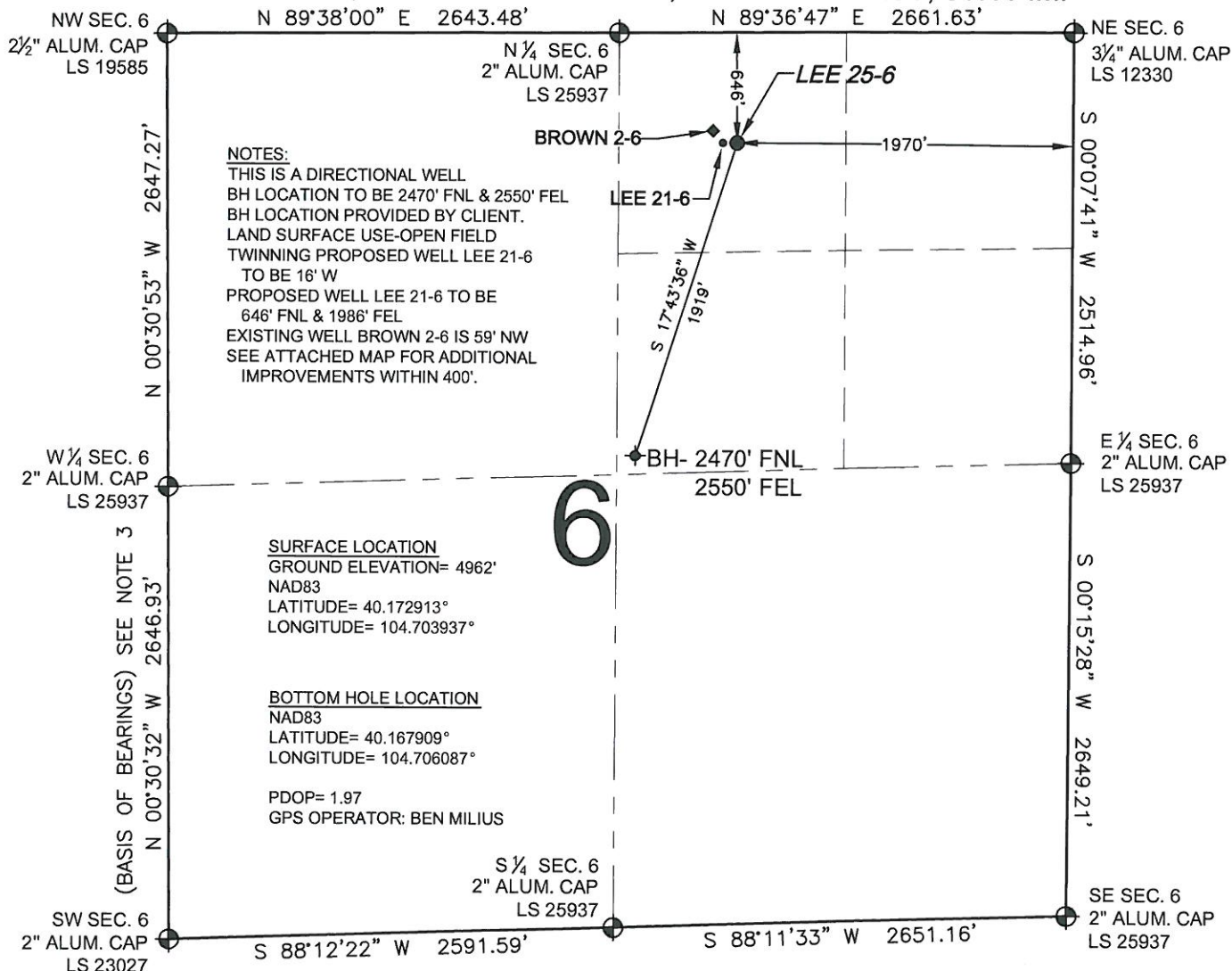


# WELL LOCATION CERTIFICATE: LEE 25-6

SECTION 6, TOWNSHIP 2 NORTH, RANGE 65 WEST, 6TH P.M.



WELL LEE 25-6 TO BE LOCATED 646' FNL AND 1970' FEL, SECTION 6, T2N, R65W OF THE 6th P.M.

## LEGEND

- = EXISTING MONUMENT
- ◆ = BOTTOM HOLE
- BH = BOTTOM HOLE
- = PROPOSED WELL
- ◆ = EXISTING WELL

0 500 1000

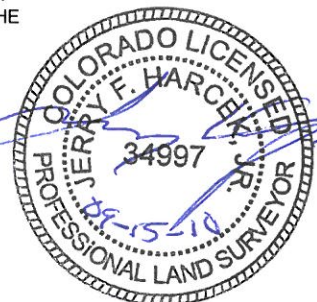
SCALE: 1"=1000'

## NOTES:

- THIS SURVEY WAS DONE BY GPS METHODS AND CONFORMS TO THE MINIMUM STANDARDS SET BY THE C.O.G.C.C., RULE NO. 215
- ELEVATIONS SHOWN AT THE WELL HEAD, AS WELL AS HORIZONTAL CONTROL, ARE BASED ON GPS-RTK VALUES DERIVED FROM DOING 2-HOUR STATIC GPS SESSIONS AND REDUCTIONS USING O.P.U.S. SOLUTIONS.  
VERTICAL = NAVD88; HORIZONTAL = NAD83/92
- THE BEARINGS SHOWN HEREON ARE BASED ON GPS OBSERVATIONS BETWEEN THE MONUMENTS SHOWN HEREON AS FOUND ON THE FIELD DATE BELOW.
- DISTANCES SHOWN ARE AT GROUND LEVEL, AS MEASURED IN THE FIELD, WITH TIES TO WELLS MEASURED AT A PERPENDICULAR TO SECTION LINES.

I, JERRY F. HARCEK JR., A LICENSED PROFESSIONAL LAND SURVEYOR IN THE STATE OF COLORADO DO HEREBY CERTIFY TO **KERR-MCGEE OIL & GAS ONSHORE LP**, THAT THE SURVEY AND WELL LOCATION CERTIFICATE SHOWN HEREON WERE DONE BY ME OR UNDER MY DIRECT SUPERVISION AND THAT THE DRAWING SHOWN HEREON ACCURATELY DEPICTS THE PROPOSED LOCATION OF THE WELL **LEE 25-6**. THIS CERTIFICATE DOES NOT REPRESENT A LAND SURVEY PLAT OR IMPROVEMENT SURVEY PLAT AS DEFINED BY C.R.S. 38-51-102 AND CANNOT BE RELIED UPON TO DETERMINE OWNERSHIP.

JERRY F. HARCEK JR., PLS 34997  
COLORADO LICENSED PROFESSIONAL LAND SURVEYOR  
FOR AND ON BEHALF OF P.F.S., LLC

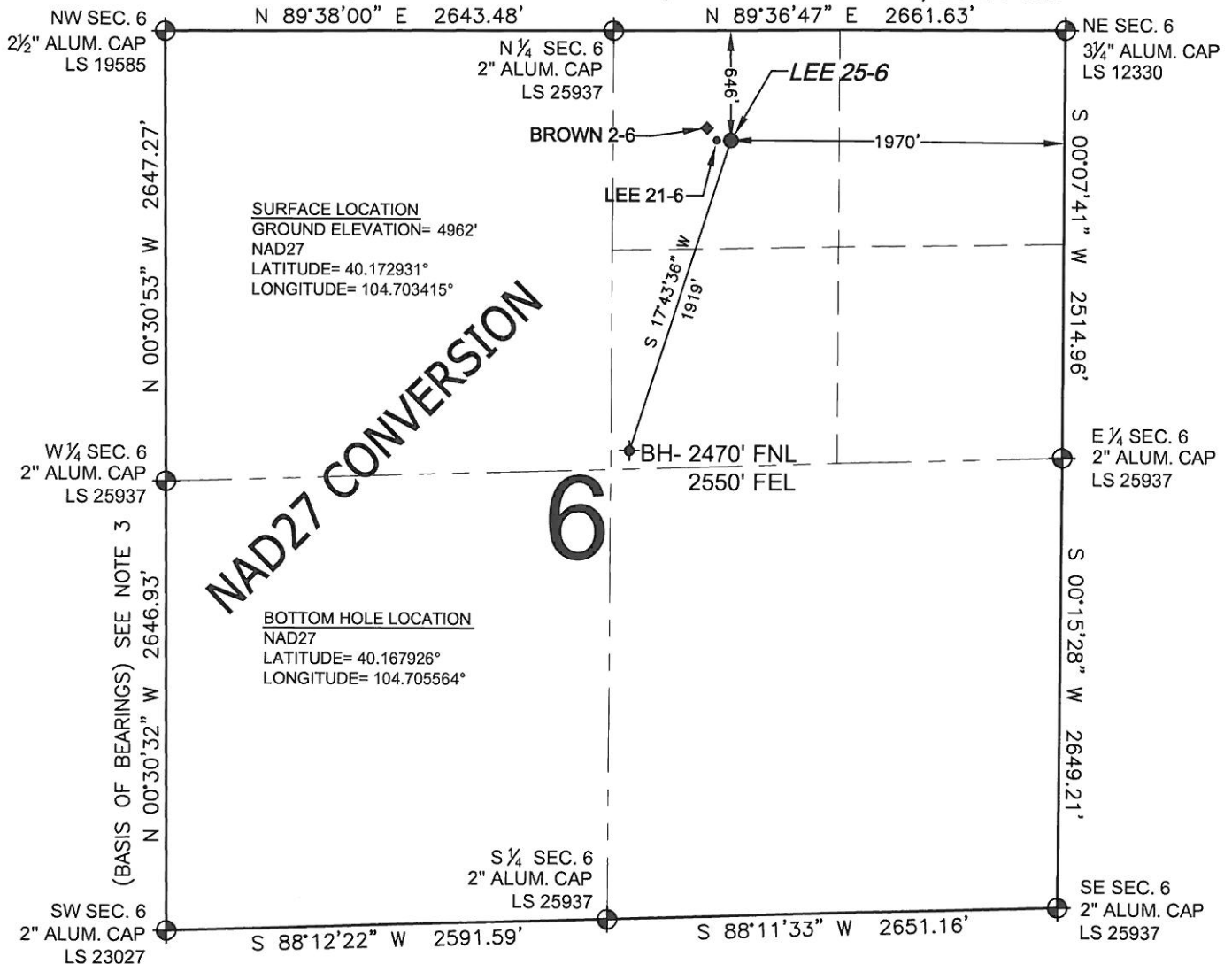


|                               |               |                                  |
|-------------------------------|---------------|----------------------------------|
| PREPARED BY:                  | FIELD DATE:   | WELL NAME:                       |
| PFS                           | 08-26-10      | LEE 25-6                         |
| Petroleum Field Services, LLC | DRAWING DATE: | SURFACE LOCATION:                |
| 1801 W. 13th Ave.             | 09-13-10      | WELD COUNTY, COLORADO            |
| Denver, CO 80204              | BY:           | NW 1/4 NE 1/4, SEC. 6, T2N, R65W |
|                               | SMF           |                                  |

NOTICE: ACCORDING TO COLORADO LAW YOU MUST COMMENCE ANY LEGAL ACTION BASED UPON ANY DEFECT IN THIS SURVEY WITHIN THREE YEARS AFTER YOU FIRST DISCOVER SUCH DEFECT. IN NO EVENT MAY ANY ACTION BASED UPON ANY DEFECT IN THIS SURVEY BE COMMENCED MORE THAN TEN YEARS FROM THIS SAID DATE OF THIS CERTIFICATION SHOWN HEREON.

# EXHIBIT: NAD27 CONVERSION

SECTION 6, TOWNSHIP 2 NORTH, RANGE 65 WEST, 6TH P.M.



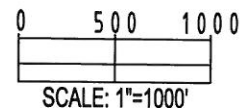
## NOTES:

- THIS SURVEY WAS DONE BY GPS METHODS AND CONFORMS TO THE MINIMUM STANDARDS SET BY THE C.O.G.C.C., RULE NO. 215
- ELEVATIONS SHOWN AT THE WELL HEAD, AS WELL AS HORIZONTAL CONTROL, ARE BASED ON GPS-RTK VALUES DERIVED FROM DOING 2-HOUR STATIC GPS SESSIONS AND REDUCTIONS USING O.P.U.S. SOLUTIONS.  
VERTICAL = NAVD88; HORIZONTAL = NAD83/92
- THE BEARINGS SHOWN HEREON ARE BASED ON GPS OBSERVATIONS BETWEEN THE MONUMENTS SHOWN HEREON AS FOUND ON THE FIELD DATE BELOW.
- DISTANCES SHOWN ARE AT GROUND LEVEL, AS MEASURED IN THE FIELD, WITH TIES TO WELLS MEASURED AT A PERPENDICULAR TO SECTION LINES.

## LEGEND

- = EXISTING MONUMENT   
 = BOTTOM HOLE   
 BH = BOTTOM HOLE  
 = PROPOSED WELL   
 = EXISTING WELL

NOTE: LATITUDE AND LONGITUDE SHOWN WERE CONVERTED FROM NAD83 USING CORPSCON 6.0 (PROGRAM). PFS DOES NOT WARRANT OR GUARANTEE THEIR ACCURACY.



|                                                                                            |                           |                                            |
|--------------------------------------------------------------------------------------------|---------------------------|--------------------------------------------|
| PREPARED BY:<br><br>Petroleum Field Services, LLC<br>1801 W. 13th Ave.<br>Denver, CO 80204 | FIELD DATE:<br>08-26-10   | WELL NAME:<br>LEE 25-6                     |
|                                                                                            | DRAWING DATE:<br>09-13-10 | SURFACE LOCATION:<br>WELD COUNTY, COLORADO |
|                                                                                            | BY:<br>SMF                | NW 1/4 NE 1/4, SEC. 6, T2N, R65W           |

NOTICE: ACCORDING TO COLORADO LAW YOU MUST COMMENCE ANY LEGAL ACTION BASED UPON ANY DEFECT IN THIS SURVEY WITHIN THREE YEARS AFTER YOU FIRST DISCOVER SUCH DEFECT. IN NO EVENT MAY ANY ACTION BASED UPON ANY DEFECT IN THIS SURVEY BE COMMENCED MORE THAN TEN YEARS FROM THIS SAID DATE OF THIS CERTIFICATION SHOWN HEREON.