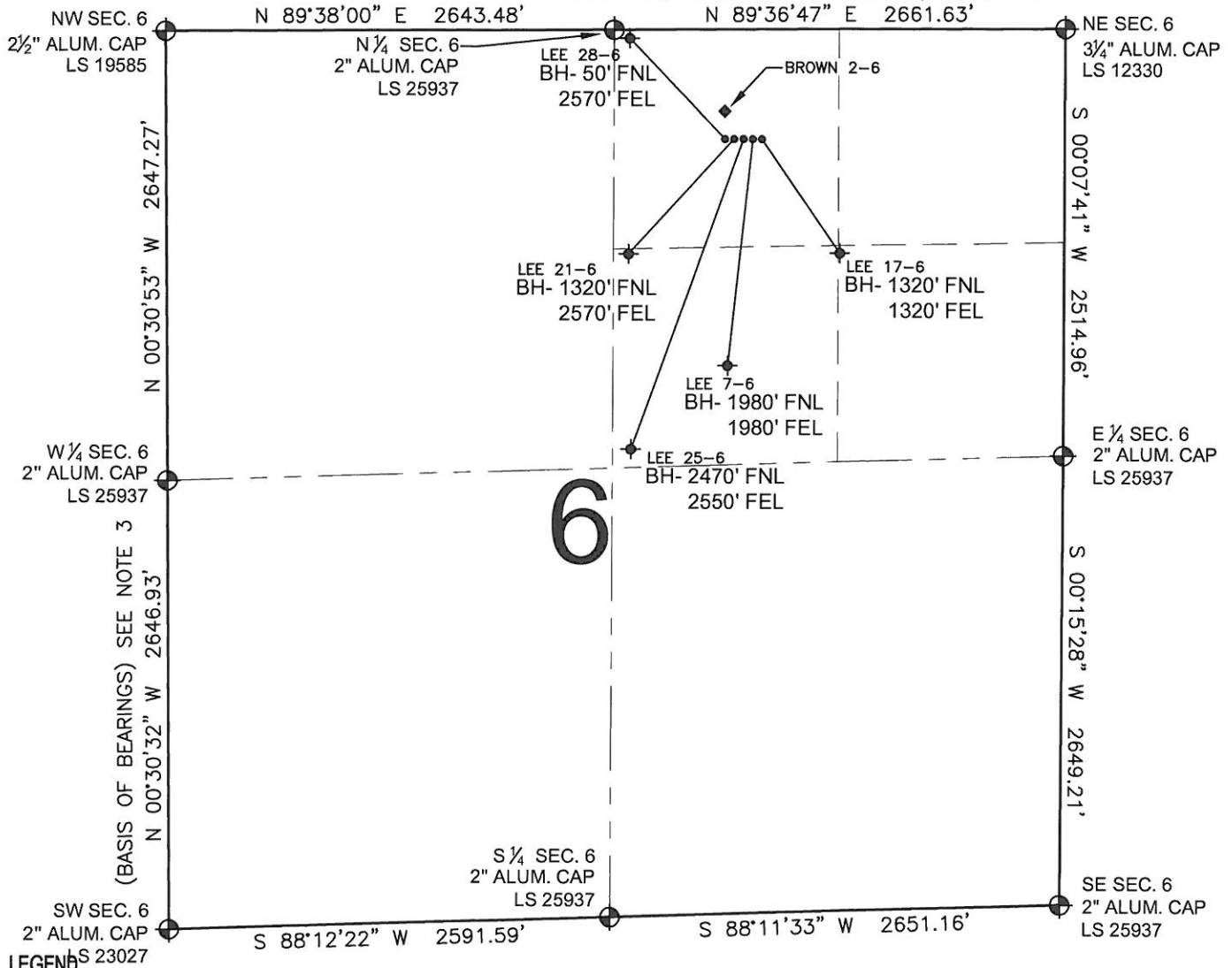


PAD DRAWING - LEE 5 PAD

SECTION 6, TOWNSHIP 2 NORTH, RANGE 65 WEST, 6TH P.M.



LEGEND

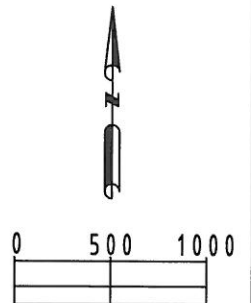
- ⊕ = EXISTING MONUMENT
- ⬠ = BOTTOM HOLE
- BH= BOTTOM HOLE
- = PROPOSED WELL
- ◆ = EXISTING WELL


NOTES:

- THIS SURVEY WAS DONE BY GPS METHODS AND CONFORMS TO THE MINIMUM STANDARDS SET BY THE C.O.G.C.C., RULE NO. 215 (PDOP VALUE IS LESS THAN 6.0, LATITUDE AND LONGITUDE ARE ACCURATE TO 5 DECIMAL PLACES, AND GPS OBSERVATIONS ARE DIFFERENTIAL AND DONE BY QUALIFIED PERSONNEL.)
- ELEVATIONS SHOWN AT THE WELL HEAD, AS WELL AS HORIZONTAL CONTROL, ARE BASED ON GPS-RTK VALUES DERIVED FROM DOING 2-HOUR STATIC GPS SESSIONS AND REDUCTIONS USING O.P.U.S. SOLUTIONS.
VERTICAL = NAVD88; HORIZONTAL = NAD83/92
- THE BEARINGS SHOWN HEREON ARE BASED ON GPS OBSERVATIONS BETWEEN THE MONUMENTS SHOWN HEREON AS FOUND ON THE FIELD DATE BELOW.
- DISTANCES SHOWN ARE AT GROUND LEVEL, AS MEASURED IN THE FIELD, WITH TIES TO WELLS MEASURED AT A PERPENDICULAR TO SECTION LINES.

NOTES:

- LEE 17-6 TO BE AT 646' FNL, 1938' FEL.
- BOTTOM HOLE AT 1320' FNL & 1320' FEL.
- LEE 7-6 TO BE AT 646' FNL, 1954' FEL.
- BOTTOM HOLE AT 1980' FNL & 1980' FEL.
- LEE 25-6 TO BE AT 646' FNL, 1970' FEL.
- BOTTOM HOLE AT 2470' FNL & 2550' FEL.
- LEE 21-6 TO BE AT 646' FNL, 1986' FEL.
- BOTTOM HOLE AT 1320' FNL & 2570' FEL.
- LEE 28-6 TO BE AT 646' FNL, 2002' FEL.
- BOTTOM HOLE AT 50' FNL & 2570' FEL.
- BROWN 2-6 IS 596' FNL, 2002' FEL.



| REVISIONS | | PREPARED BY: |  PFS Petroleum Field Services, LLC 1801 W. 13th Ave. Denver, CO 80204 |
|-----------|------|--------------|---|
| INITIAL | DATE | | |
| | | | |
| | | | |
| | | | |
| | | | |
| | | | |

KERR-MCGEE OIL & GAS ONSHORE LP

| | |
|---------------------------|---|
| FIELD DATE: 08-26-10 | PAD NAME: LEE 5 PAD |
| DRAWING DATE: 09-13-10 | SURFACE LOCATION: |
| BY: SMF | WELD COUNTY, COLORADO NW 1/4 NE 1/4, SEC. 6, T2N, R65W |