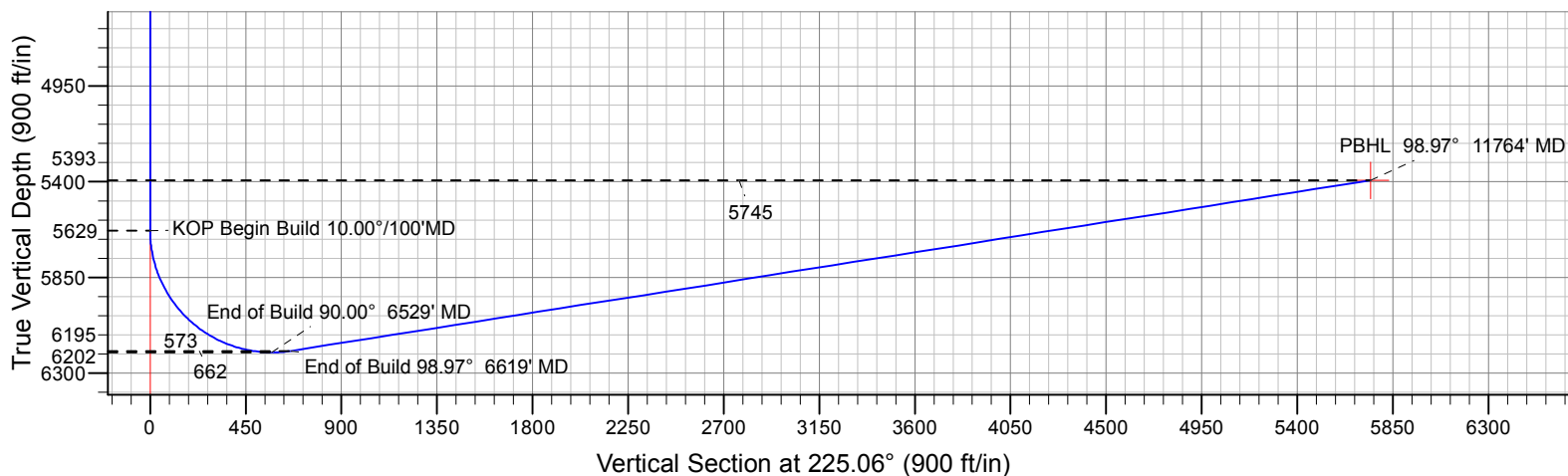
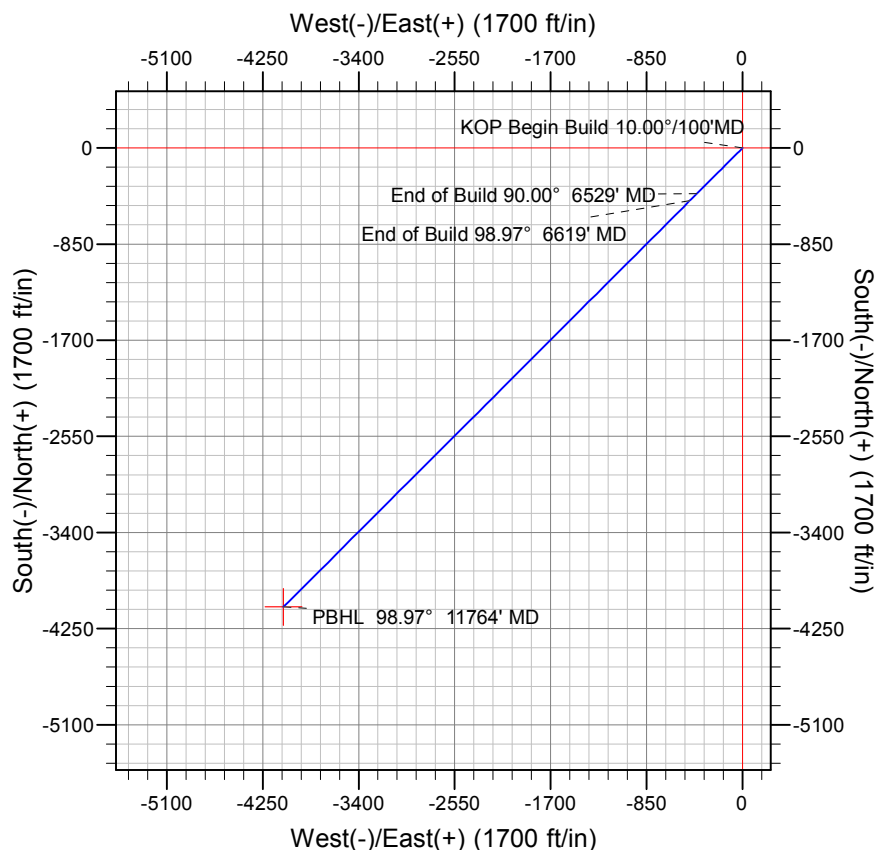
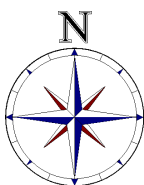
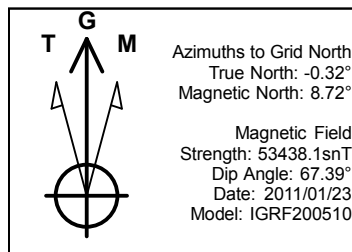


Marathon Oil Company

Rawhide Flats 10-68-16-1B

Larimer County, Colorado

Niobrara Horizontals



Design #1

Surface Location

Northing
1549123.10

Easting
3137682.77

Latitude
 $40^\circ 50' 22.780''$ N

Longitude
 $105^\circ 0' 8.698''$ W

Sec	MD	Inc	Azi	TVD	+N/-S	+E/-W	Dleg	TFace	Vsect	Target
1	0.0			0.0	0.0	0.0	0.00	0.00	0.0	
2	5629.0	0.00	0.00	5629.0	0.0	0.0	0.00	0.00	0.0	
3	6529.1	90.00	225.06	6202.0	-404.7	-405.6	10.00	225.06	573.0	
4	6618.8	98.97	225.07	6195.0	-467.8	-468.8	10.00	0.04	662.3	
5	11764.0	98.97	225.06	5393.0	-4057.6	-4066.5	0.00	-112.99	5744.7	PBHL 1B

To convert a Magnetic Direction to a Grid Direction, Add 8.72°