

T5S, R95W, 6th P.M.

Encana OIL & GAS (USA) INC.

Well location, N. PARACHUTE EMF13D-16 F17 595 (SURFACE LOCATION), located as shown in the SE 1/4 NW 1/4 of Section 17, T5S, R95W, 6th P.M., Garfield County, Colorado.

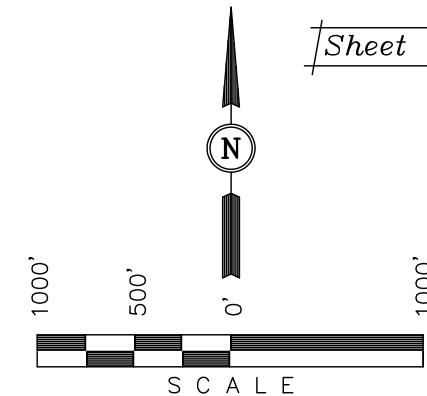
### BASIS OF ELEVATION

SPOT ELEVATION AT THE NORTHWEST CORNER OF SECTION 30, T5S, R95W, 6th P.M. TAKEN FROM THE FORKED GULCH QUADRANGLE, COLORADO, GARFIELD COUNTY, 7.5 MINUTE SERIES (TOPOGRAPHICAL MAP) PUBLISHED BY THE UNITED STATES DEPARTMENT OF THE INTERIOR, GEOLOGICAL SURVEY. SAID ELEVATION IS MARKED AS BEING 5966 FEET.

### BASIS OF BEARINGS

BASIS OF BEARINGS IS A G.P.S. OBSERVATION.

Sheet 1c of 11



### CERTIFICATE

THIS IS TO CERTIFY THAT THE ABOVE PLAT WAS PREPARED FROM FIELD NOTES OF ACTUAL SURVEYS MADE BY ME OR UNDER MY SUPERVISION AND THAT THE SAME ARE TRUE AND CORRECT TO THE BEST OF MY KNOWLEDGE AND BELIEF.

REGISTERED LAND SURVEYOR  
REGISTRATION NO. 17492  
STATE OF COLORADO

Revised: 02-14-11 D.R.B.

Revised: 11-17-10 D.R.B.

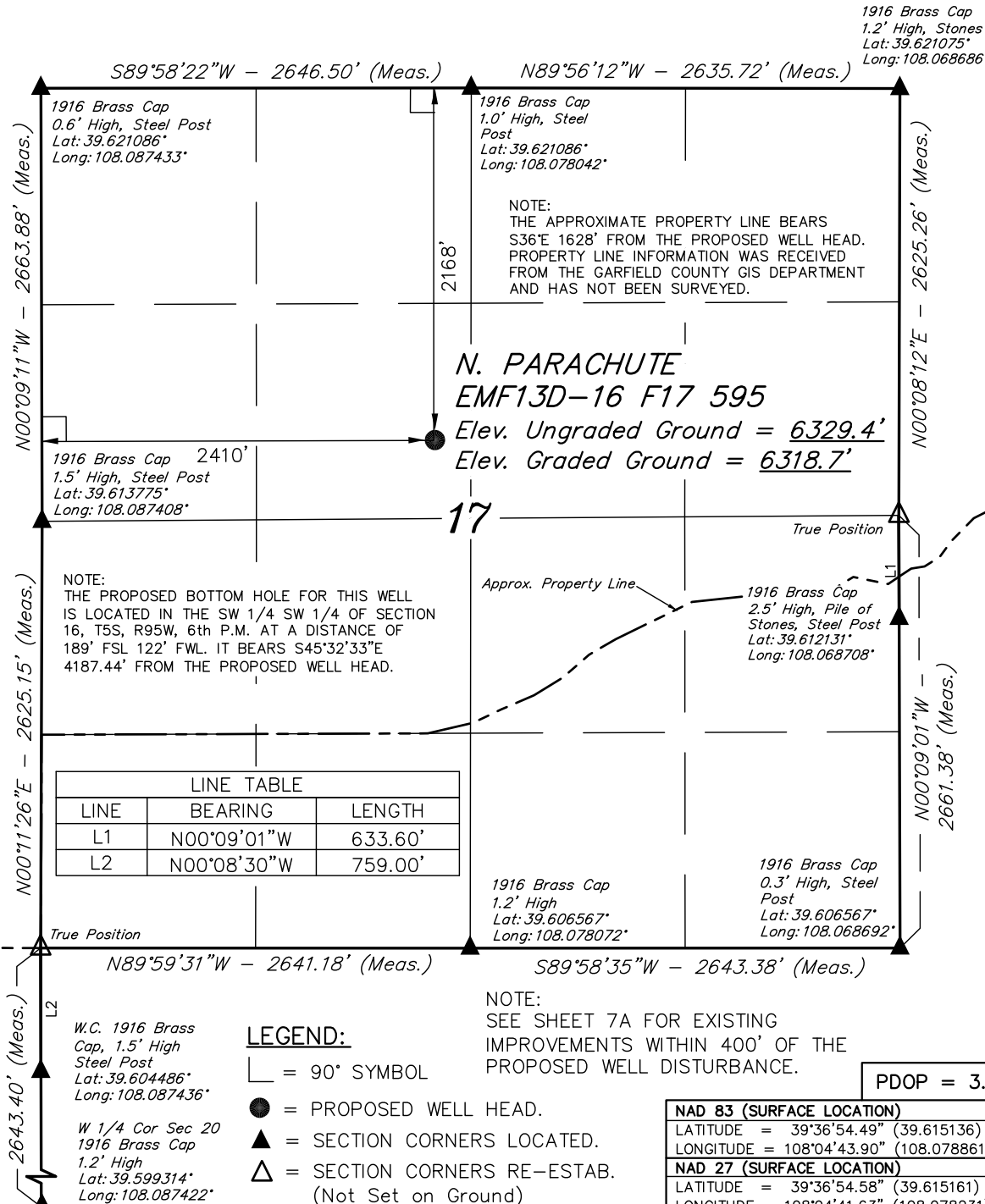
Revised: 10-14-10 D.R.B.

UINTAH ENGINEERING & LAND SURVEYING

85 SOUTH 200 EAST - VERNAL, UTAH 84078

(435) 789-1017

SCALE 1" = 1000'	DATE SURVEYED: 09-21-10	DATE DRAWN: 10-10-10
PARTY G.O. B.J. D.R.B.	REFERENCES G.L.O. PLAT	
WEATHER WARM	FILE Encana OIL & GAS (USA) INC.	



### LEGEND:

└ = 90° SYMBOL

● = PROPOSED WELL HEAD.

▲ = SECTION CORNERS LOCATED.

△ = SECTION CORNERS RE-ESTAB.  
(Not Set on Ground)

NOTE:  
SEE SHEET 7A FOR EXISTING  
IMPROVEMENTS WITHIN 400' OF THE  
PROPOSED WELL DISTURBANCE.

PDOP = 3.7

### NAD 83 (SURFACE LOCATION)

LATITUDE = 39°36'54.49" (39.615136)

LONGITUDE = 108°04'43.90" (108.078861)

### NAD 27 (SURFACE LOCATION)

LATITUDE = 39°36'54.58" (39.615161)

LONGITUDE = 108°04'41.63" (108.078231)

# Encana OIL & GAS (USA) INC.

T5S, R95W, 6th P.M.

Well location, N. PARACHUTE EMF13D-16 F17 595 (TARGET BOTTOM HOLE), located as shown in the SW 1/4 SW 1/4 of Section 16, T5S, R95W, 6th P.M., Garfield County, Colorado.

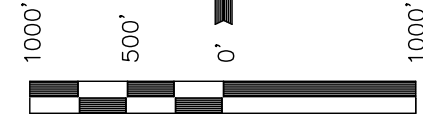
## BASIS OF ELEVATION

SPOT ELEVATION AT THE NORTHWEST CORNER OF SECTION 30, T5S, R95W, 6th P.M. TAKEN FROM THE FORKED GULCH QUADRANGLE, COLORADO, GARFIELD COUNTY, 7.5 MINUTE SERIES (TOPOGRAPHICAL MAP) PUBLISHED BY THE UNITED STATES DEPARTMENT OF THE INTERIOR, GEOLOGICAL SURVEY. SAID ELEVATION IS MARKED AS BEING 5966 FEET.

## BASIS OF BEARINGS

BASIS OF BEARINGS IS A G.P.S. OBSERVATION.

Sheet 1d of 11



SCALE

## CERTIFICATE

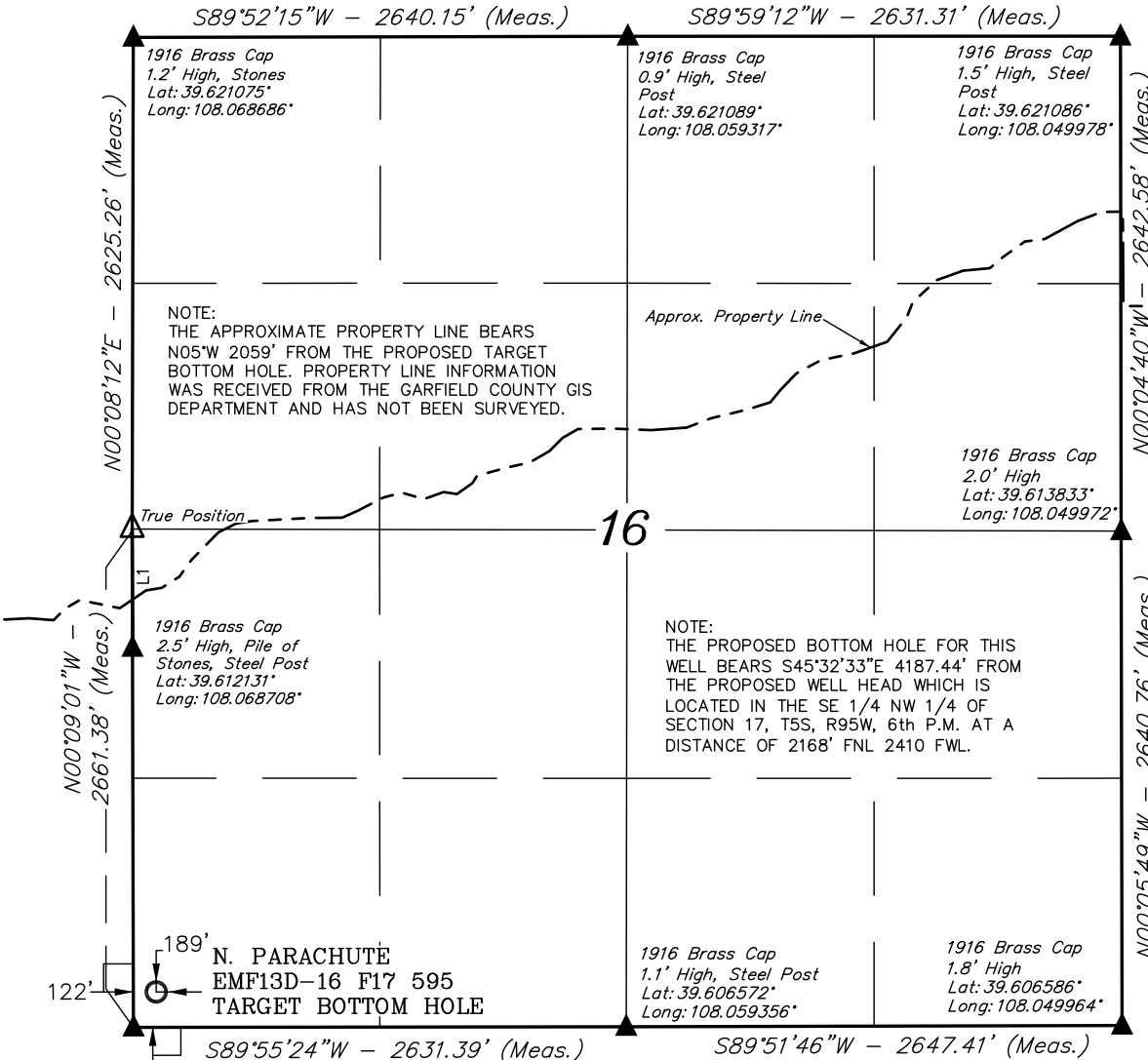
THIS IS TO CERTIFY THAT THE ABOVE PLAT WAS PREPARED FROM FIELD NOTES OF ACTUAL SURVEYS MADE BY ME OR UNDER MY SUPERVISION AND THAT THE SAME ARE TRUE AND CORRECT TO THE BEST OF MY KNOWLEDGE AND BELIEF.

REGISTERED LAND SURVEYOR  
REGISTRATION NO. 17492  
STATE OF COLORADO

Revised: 02-14-11 D.R.B.  
Revised: 11-17-10 D.R.B.  
Revised: 10-14-10 D.R.B.

**UINTAH ENGINEERING & LAND SURVEYING**  
**85 SOUTH 200 EAST - VERNAL, UTAH 84078**  
(435) 789-1017

SCALE 1" = 1000'	DATE SURVEYED: 09-21-10	DATE DRAWN: 10-10-10
PARTY G.O. B.J. D.R.B.	REFERENCES G.L.O. PLAT	
WEATHER WARM	FILE Encana OIL & GAS (USA) INC.	



## LEGEND:

- └─┘ = 90° SYMBOL
- = PROPOSED WELL HEAD.
- ▲ = SECTION CORNERS LOCATED.
- △ = SECTION CORNERS RE-ESTAB.  
(Not Set on Ground)

LINE TABLE		
LINE	BEARING	LENGTH
L1	N00°09'01"W	633.60'

NAD 83 (TARGET BOTTOM HOLE)	
LATITUDE	= 39°36'25.50" (39.607083)
LONGITUDE	= 108°04'05.74" (108.068261)
NAD 27 (TARGET BOTTOM HOLE)	
LATITUDE	= 39°36'25.59" (39.607108)
LONGITUDE	= 108°04'03.46" (108.067628)

1916 Brass Cap  
0.3' High, Steel Post  
Lat: 39.606567°  
Long: 108.068692°

1916 Brass Cap  
1.2' High, Stones  
Lat: 39.621075°  
Long: 108.068686°

1916 Brass Cap  
0.9' High, Steel  
Post  
Lat: 39.621089°  
Long: 108.059317°

1916 Brass Cap  
1.5' High, Steel  
Post  
Lat: 39.621086°  
Long: 108.049978°

1916 Brass Cap  
2.0' High  
Lat: 39.613833°  
Long: 108.049972°

NOTE: THE PROPOSED BOTTOM HOLE FOR THIS WELL BEARS S45°32'33"E 4187.44' FROM THE PROPOSED WELL HEAD WHICH IS LOCATED IN THE SE 1/4 NW 1/4 OF SECTION 17, T5S, R95W, 6th P.M. AT A DISTANCE OF 2168' FNL 2410 FWL.

1916 Brass Cap  
1.1' High, Steel Post  
Lat: 39.606572°  
Long: 108.059356°

1916 Brass Cap  
1.8' High  
Lat: 39.606586°  
Long: 108.049964°

189'  
122'  
N. PARACHUTE  
EMF13D-16 F17 595  
TARGET BOTTOM HOLE

S89°55'24"W - 2631.39' (Meas.)

S89°51'46"W - 2647.41' (Meas.)

S89°52'15"W - 2640.15' (Meas.)

S89°59'12"W - 2631.31' (Meas.)

N00°04'40"W - 2642.58' (Meas.)

N00°05'49"W - 2640.76' (Meas.)

N00°08'12"E - 2625.26' (Meas.)

N00°09'01"W - 2661.38' (Meas.)