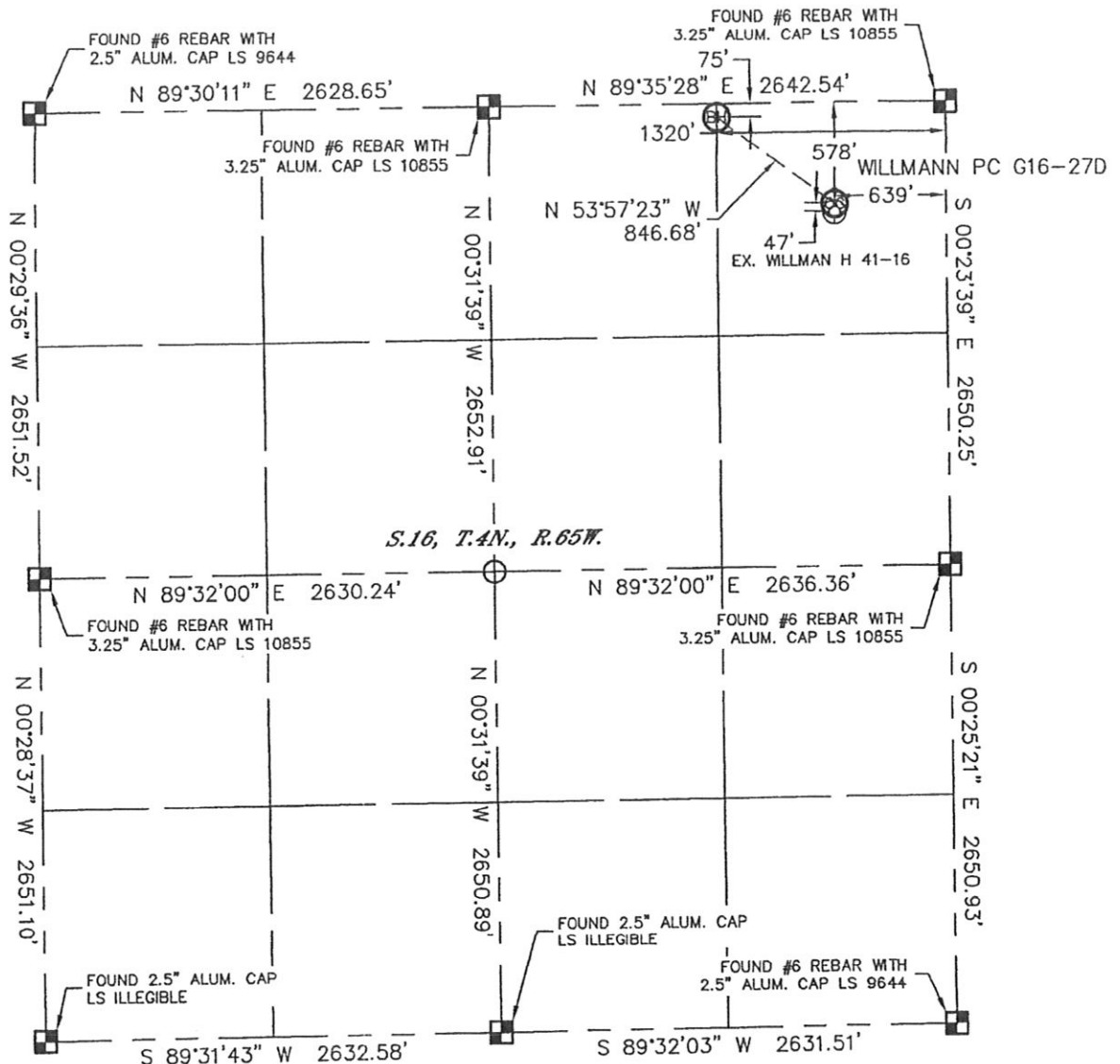


Lat40°, LLC 1635 Foxtrail Drive, Suite 325 Loveland, CO 80538

# WELL LOCATION CERTIFICATE

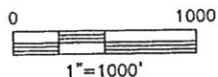
THIS MAP DOES NOT REPRESENT A BOUNDARY SURVEY

SECTION: 16  
TOWNSHIP: 4N  
RANGE: 65W



In accordance with a request from Beau Fritz with Noble Energy Inc. Lat40°, LLC has determined the surface location of the WILLMANN PC G16-27D to be 578' from the NORTH line and 639' from the EAST line and the bottom hole to be 75' from the NORTH line and 1320' from the EAST line as measured at right angles from the section lines of Section 16, Township 4 North, Range 65 West of the Sixth Principal Meridian, County of Weld, State of Colorado.

I hereby state that this Well Location Certificate was prepared by me, or under my direct supervision, that the fieldwork was completed on 12/17/10, for and on behalf of Noble Energy Inc. That this is not a Land Survey Plat or an Improvement Survey Plat, and that it is not to be relied upon for establishment of fence, building, or other future improvement lines.



## NOTE:

- 1) Bearings shown are Grid Bearings of the Colorado State Plane Coordinate System, North Zone, North American Datum 1983/2007. The lineal dimensions as contained herein are based upon the "U.S. Survey Foot."
- 2) Ground elevations are based on an observed GPS elevation (NAVD 1988 DATUM).
- 3) NEAREST EXISTING WELL: WILLMAN H 41-16, 47'
- 4) IMPROVEMENTS: See LOCATION DRAWING for all visible improvements within 400' of disturbed area.
- 5) SURFACE USE: PASTURE
- 6) INSTRUMENT OPERATOR: BRIAN BRINKMAN

SURFACE LOCATION  
LATITUDE: 40.31813N  
LONGITUDE: 104.66089W  
PDOP: 4.5  
ELEV: 4738'  
1/4, 1/4: NE1/4NE1/4  
NEAREST PROPERTY LINE: 578' NORTH

BOTTOM HOLE  
LATITUDE: 40.31951N  
LONGITUDE: 104.66333W

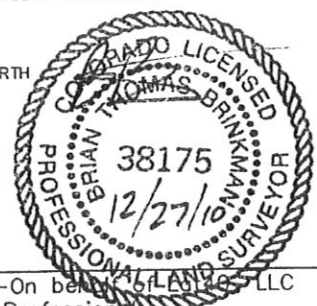
## NOTE

According to Colorado law, you must commence any legal action based upon any defect in this W.L.C. within three years after you discover such defect. In no event, may any action based upon any defect in this survey be commenced more than ten years after the date of the certificate shown hereon. (13-80-105 C.R.S.)

## LEGEND

- = ALIQUOT MONUMENT AS DESCRIBED
- = CALCULATED POSITION

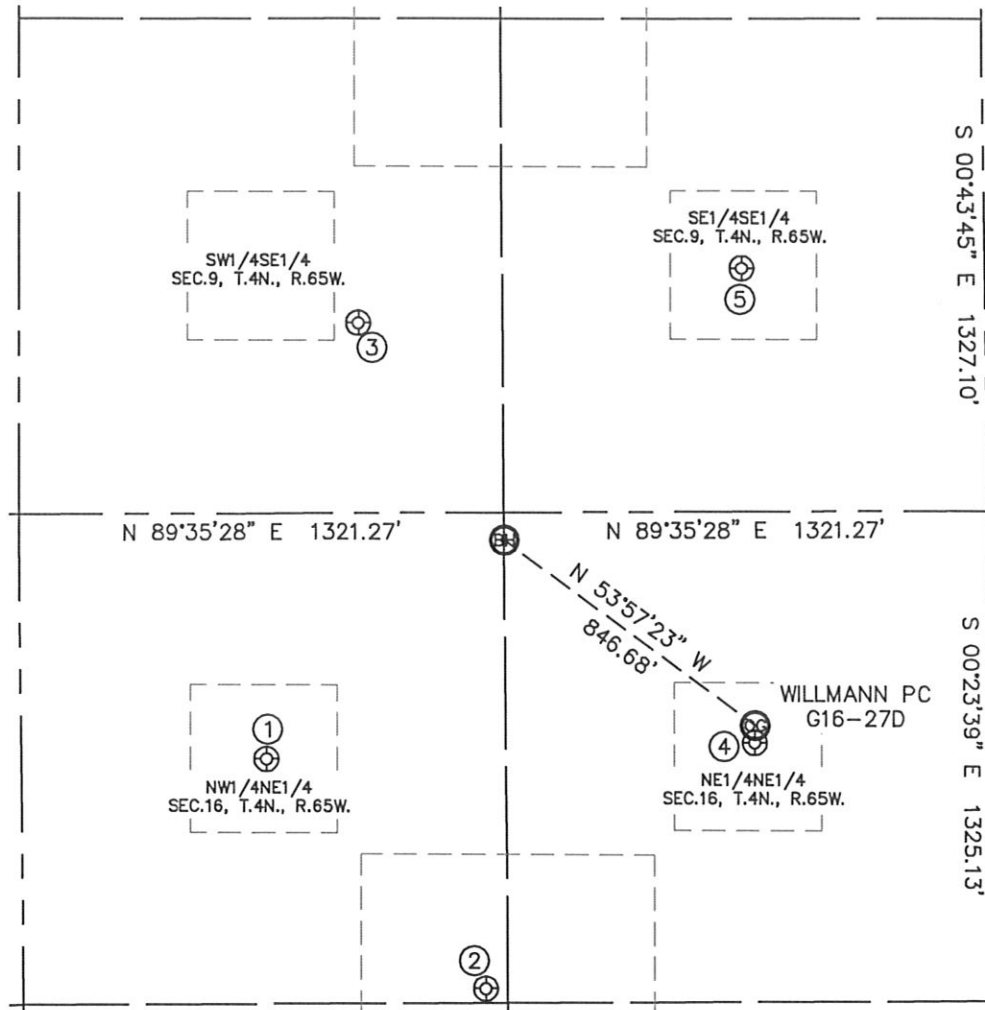
Brian T. Brinkman-On behalf of Lat40°, LLC  
Colorado Licensed Professional  
Land Surveyor No. 38175 PROJECT#: 2010178



# SITE SKETCH

WILLMANN PC G16-27D

SECTION: 16  
TOWNSHIP: 4N  
RANGE: 65W



①

MEYER 2  
NW1/4NE1/4  
664' FNL  
1972' FEL  
LAT-40.31790°N  
LONG-104.66567°W  
PDOP: 1.2  
ELEV: 4761'

②

MEYER G 16-17  
NW1/4NE1/4  
1287' FNL  
1381' FEL  
LAT-40.31619°N  
LONG-104.66356°W  
PDOP: 1.5  
ELEV: 4765'

③

HARLEY S. RUPERT 2  
SW1/4SE1/4  
513' FSL  
1712' FEL  
LAT-40.32113°N  
LONG-104.66474°W  
PDOP: 1.2  
ELEV: 4729'

④

WILLMAN H 41-16  
NE1/4NE1/4  
625' FNL  
641' FEL  
LAT-40.31800°N  
LONG-104.66090°W  
PDOP: 1.4  
ELEV: 4739'

⑤

BETZ 9-44  
SE1/4SE1/4  
656' FSL  
662' FEL  
LAT-40.32152°N  
LONG-104.66098°W  
PDOP: 1.4  
ELEV: 4716'

