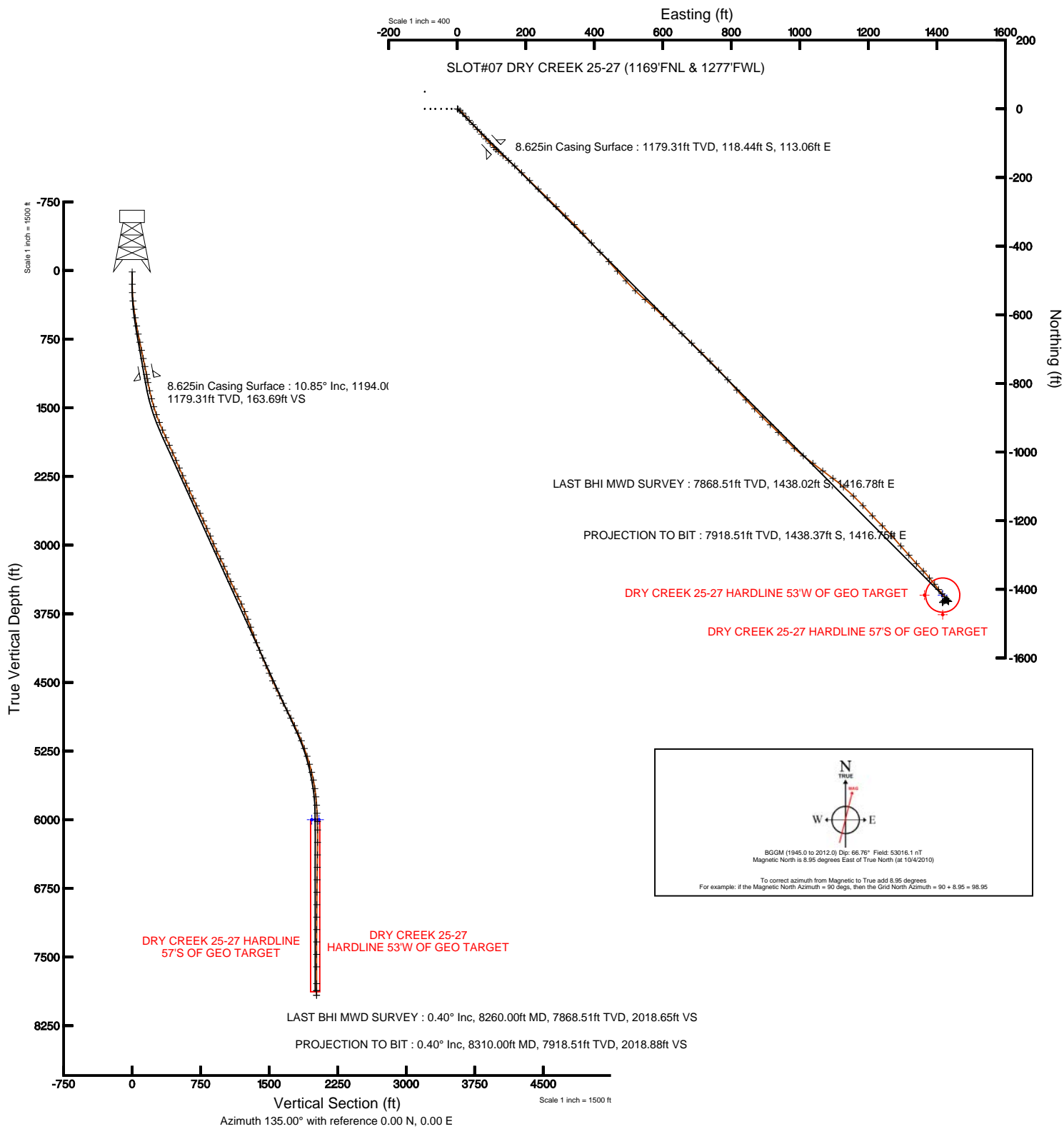


KERR MCGEE OIL & GAS ONSHORE LP

Location:	COLORADO	Slot:	SLOT#07 DRY CREEK 25-27 (1169FNL & 1277FWL)
Field:	WELD COUNTY (KERR MCGEE)	Well:	DRY CREEK 25-27
Facility:	SEC.27-T1N-R67W	Wellbore:	DRY CREEK 25-27 PWB



Plot reference wellpath is DRY CREEK 25-27 (REV-A.0) PWP	
True vertical depths are referenced to XTREME 12 (RT)	Grid System: NAD83 / Lambert Colorado State Planes, Northern Zone (501), US feet
Measured depths are referenced to XTREME 12 (RT)	North Reference: True north
XTREME 12 (RT) to Mean Sea Level: 5024 feet	Scale: True distance
Mean Sea Level to Mud line (Facility: SEC.27-T1N-R67W): 0 feet	Depths are in feet
Coordinates are in feet referenced to Slot	Created by: nistale on 10/26/2010





# Actual Wellpath Report

DRY CREEK 25-27 AWP

Page 1 of 5



INTEQ

## REFERENCE WELLPATH IDENTIFICATION

Operator	KERR MCGEE OIL & GAS ONSHORE LP	Slot	SLOT#07 DRY CREEK 25-27 (1169'FNL & 1277'FWL)
Area	COLORADO	Well	DRY CREEK 25-27
Field	WELD COUNTY (KERR MCGEE)	Wellbore	DRY CREEK 25-27 AWB
Facility	SEC.27-T1N-R67W		

## REPORT SETUP INFORMATION

Projection System	NAD83 / Lambert Colorado State Planes, Northern Zone (501), US feet	Software System	WellArchitect® 2.0
North Reference	True	User	Nistale
Scale	0.999964	Report Generated	10/26/2010 at 10:40:01 AM
Convergence at slot	0.40° East	Database/Source file	Denver Server/DRY_CREEK_25-27_AWB.xml

## WELLPATH LOCATION

	Local coordinates		Grid coordinates		Geographic coordinates	
	North[ft]	East[ft]	Easting[USft]	Northing[USft]	Latitude	Longitude
Slot Location	0.00	95.22	3173193.20	1252969.28	40°01'34.068"N	104°52'53.580"W
Facility Reference Pt			3173097.99	1252968.61	40°01'34.068"N	104°52'54.804"W
Field Reference Pt			3197771.84	1268891.29	40°04'09.600"N	104°47'36.000"W

## WELLPATH DATUM

Calculation method	Minimum curvature	XTREME 12 (RT) to Facility Vertical Datum	5024.00ft
Horizontal Reference Pt	Slot	XTREME 12 (RT) to Mean Sea Level	5024.00ft
Vertical Reference Pt	XTREME 12 (RT)	Facility Vertical Datum to Mud Line (Facility)	0.00ft
MD Reference Pt	XTREME 12 (RT)	Section Origin	N 0.00, E 0.00 ft
Field Vertical Reference	Mean Sea Level	Section Azimuth	135.00°



# Actual Wellpath Report

DRY CREEK 25-27 AWP

Page 2 of 5



INTEQ

REFERENCE WELLPATH IDENTIFICATION			
Operator	KERR MCGEE OIL & GAS ONSHORE LP	Slot	SLOT#07 DRY CREEK 25-27 (1169'FNL & 1277'FWL)
Area	COLORADO	Well	DRY CREEK 25-27
Field	WELD COUNTY (KERR MCGEE)	Wellbore	DRY CREEK 25-27 AWB
Facility	SEC.27-T1N-R67W		

WELLPATH DATA (87 stations) † = interpolated/extrapolated station								
MD [ft]	Inclination [°]	Azimuth [°]	TVD [ft]	Vert Sect [ft]	North [ft]	East [ft]	DLS [°/100ft]	Comments
0.00†	0.000	91.300	0.00	0.00	0.00	0.00	0.00	
15.00	0.000	91.300	15.00	0.00	0.00	0.00	0.00	
149.00	0.500	91.300	149.00	0.42	-0.01	0.58	0.37	
240.00	2.500	122.900	239.96	2.65	-1.10	2.65	2.30	
332.00	5.500	128.500	331.73	8.99	-4.94	7.78	3.28	
424.00	7.600	134.900	423.12	19.46	-11.98	15.55	2.41	
517.00	9.500	140.500	515.09	33.25	-22.24	24.78	2.23	
608.00	9.900	137.700	604.79	48.54	-33.82	34.83	0.68	
698.00	11.300	138.400	693.25	65.07	-46.14	45.89	1.56	
789.00	12.000	137.700	782.37	83.42	-59.80	58.17	0.78	
880.00	12.000	137.700	871.39	102.32	-73.80	70.91	0.00	
971.00	11.800	137.000	960.43	121.07	-87.60	83.62	0.27	
1061.00	11.000	137.700	1048.65	138.84	-100.68	95.67	0.90	
1149.00	10.600	134.900	1135.10	155.32	-112.60	107.06	0.75	
1239.00	11.100	132.400	1223.49	172.25	-124.29	119.32	0.76	
1330.00	12.600	129.900	1312.55	190.89	-136.56	133.40	1.74	
1420.00	14.500	130.300	1400.04	211.90	-150.15	149.53	2.11	
1511.00	16.600	134.200	1487.70	236.26	-166.58	167.54	2.58	
1602.00	19.500	133.100	1574.22	264.44	-186.02	187.95	3.21	
1693.00	22.300	135.900	1659.22	296.89	-208.80	211.06	3.27	
1783.00	23.900	133.800	1742.00	332.19	-233.69	236.11	2.00	
1874.00	23.200	134.200	1825.43	368.55	-258.94	262.26	0.79	
1965.00	24.900	134.900	1908.52	405.63	-284.96	288.68	1.89	
2056.00	24.600	134.500	1991.16	443.73	-311.76	315.76	0.38	
2147.00	22.700	134.900	2074.52	480.23	-337.43	341.71	2.10	
2237.00	23.700	136.300	2157.24	515.68	-362.77	366.51	1.27	
2328.00	24.800	139.400	2240.21	552.99	-390.49	391.57	1.85	
2419.00	23.600	135.200	2323.22	590.24	-417.90	416.83	2.31	
2510.00	24.900	138.000	2406.19	627.59	-445.07	442.48	1.91	
2601.00	24.000	138.700	2489.03	665.19	-473.21	467.52	1.04	
2691.00	25.400	137.700	2570.79	702.74	-501.24	492.59	1.62	
2782.00	25.800	135.200	2652.86	742.04	-529.72	519.68	1.27	
2873.00	24.600	129.900	2735.21	780.71	-555.93	548.17	2.81	
2964.00	23.700	133.800	2818.25	817.87	-580.74	575.90	2.01	
3055.00	23.600	132.800	2901.61	854.36	-605.78	602.47	0.45	
3146.00	23.200	133.400	2985.12	890.48	-630.47	628.85	0.51	
3236.00	24.900	132.400	3067.31	927.13	-655.43	655.73	1.94	
3327.00	26.400	134.900	3149.34	966.50	-682.63	684.21	2.03	
3418.00	24.200	133.800	3231.61	1005.38	-709.82	712.00	2.47	
3509.00	22.400	135.600	3315.18	1041.37	-735.12	737.60	2.13	
3600.00	24.700	135.900	3398.60	1077.72	-761.16	762.96	2.53	
3690.00	26.200	137.700	3479.86	1116.37	-789.37	789.42	1.88	
3781.00	26.500	139.400	3561.41	1156.68	-819.64	816.16	0.89	
3872.00	24.200	134.900	3643.65	1195.58	-848.23	842.59	3.30	
3963.00	23.200	137.300	3726.98	1232.15	-874.57	867.95	1.53	



# Actual Wellpath Report

DRY CREEK 25-27 AWP

Page 3 of 5



INTEQ

## REFERENCE WELLPATH IDENTIFICATION

Operator	KERR MCGEE OIL & GAS ONSHORE LP	Slot	SLOT#07 DRY CREEK 25-27 (1169'FNL & 1277'FWL)
Area	COLORADO	Well	DRY CREEK 25-27
Field	WELD COUNTY (KERR MCGEE)	Wellbore	DRY CREEK 25-27 AWB
Facility	SEC.27-T1N-R67W		

## WELLPATH DATA (87 stations)

MD [ft]	Inclination [°]	Azimuth [°]	TVD [ft]	Vert Sect [ft]	North [ft]	East [ft]	DLS [°/100ft]	Comments
4053.00	20.200	134.200	3810.59	1265.41	-898.43	891.12	3.57	
4144.00	20.700	134.500	3895.86	1297.20	-920.66	913.86	0.56	
4235.00	20.900	133.400	3980.93	1329.51	-943.08	937.12	0.48	
4326.00	20.900	136.600	4065.94	1361.96	-966.03	960.07	1.25	
4416.00	22.700	132.800	4149.51	1395.36	-989.50	983.84	2.54	
4507.00	21.500	126.100	4233.83	1429.39	-1011.26	1010.21	3.07	
4598.00	24.300	128.900	4317.65	1464.49	-1032.84	1038.26	3.30	
4689.00	22.900	126.800	4401.04	1500.64	-1055.21	1067.01	1.79	
4779.00	25.200	126.100	4483.22	1536.90	-1076.99	1096.52	2.58	
4870.00	26.400	132.100	4565.17	1576.25	-1101.97	1127.19	3.16	
4961.00	25.000	132.100	4647.16	1615.67	-1128.43	1156.47	1.54	
5052.00	26.400	138.000	4729.17	1655.08	-1156.36	1184.28	3.20	
5142.00	27.100	135.900	4809.54	1695.56	-1185.95	1211.93	1.31	
5233.00	26.500	135.100	4890.77	1736.59	-1215.22	1240.69	0.77	
5324.00	26.600	137.700	4972.17	1777.24	-1244.67	1268.73	1.28	
5415.00	24.700	138.400	5054.20	1816.58	-1273.96	1295.07	2.11	
5506.00	21.400	139.400	5137.92	1852.12	-1300.79	1318.50	3.65	
5597.00	21.000	137.000	5222.77	1884.97	-1325.32	1340.43	1.05	
5687.00	18.000	137.000	5307.60	1914.99	-1347.29	1360.91	3.33	
5778.00	15.900	139.800	5394.64	1941.47	-1367.10	1378.55	2.48	
5869.00	14.200	142.200	5482.52	1964.96	-1385.44	1393.44	1.99	
5956.00	11.300	141.900	5567.36	1984.01	-1400.58	1405.24	3.33	
6050.00	8.400	141.200	5659.97	1999.99	-1413.18	1415.23	3.09	
6141.00	5.800	142.600	5750.26	2011.15	-1422.02	1422.18	2.86	
6232.00	4.000	127.100	5840.93	2018.86	-1427.58	1427.51	2.44	
6322.00	2.700	146.100	5930.77	2024.05	-1431.24	1431.20	1.88	
6413.00	2.300	147.500	6021.69	2027.93	-1434.56	1433.37	0.44	
6504.00	0.300	54.000	6112.66	2029.75	-1435.96	1434.55	2.57	
6640.00	0.400	282.200	6248.66	2029.41	-1435.65	1434.37	0.47	
6776.00	0.500	298.000	6384.66	2028.44	-1435.27	1433.38	0.12	
6912.00	1.000	312.100	6520.65	2026.69	-1434.19	1431.98	0.39	
7048.00	1.000	308.200	6656.63	2024.33	-1432.66	1430.17	0.05	
7184.00	0.800	282.900	6792.61	2022.34	-1431.72	1428.31	0.32	
7320.00	0.700	275.500	6928.60	2020.90	-1431.43	1426.55	0.10	
7456.00	0.300	242.100	7064.59	2020.15	-1431.51	1425.41	0.35	
7592.00	0.600	245.600	7200.59	2019.80	-1431.98	1424.45	0.22	
7728.00	0.800	233.600	7336.58	2019.40	-1432.83	1423.04	0.18	
7864.00	0.800	242.400	7472.56	2018.98	-1433.84	1421.43	0.09	
8000.00	1.400	234.300	7608.54	2018.43	-1435.25	1419.24	0.45	
8183.00	0.600	207.600	7791.51	2018.35	-1437.40	1416.98	0.49	
8260.00	0.400	183.800	7868.51	2018.65	-1438.02	1416.78	0.37	LAST BHI MWD SURVEY
8310.00	0.400	183.800	7918.51	2018.88	-1438.37	1416.75	0.00	PROJECTION TO BIT



# Actual Wellpath Report

DRY CREEK 25-27 AWP

Page 4 of 5



INTEQ

## REFERENCE WELLPATH IDENTIFICATION

Operator	KERR MCGEE OIL & GAS ONSHORE LP	Slot	SLOT#07 DRY CREEK 25-27 (1169'FNL & 1277'FWL)
Area	COLORADO	Well	DRY CREEK 25-27
Field	WELD COUNTY (KERR MCGEE)	Wellbore	DRY CREEK 25-27 AWB
Facility	SEC.27-T1N-R67W		

## HOLE & CASING SECTIONS Ref Wellbore: DRY CREEK 25-27 AWB Ref Wellpath: DRY CREEK 25-27 AWP

String/Diameter	Start MD [ft]	End MD [ft]	Interval [ft]	Start TVD [ft]	End TVD [ft]	Start N/S [ft]	Start E/W [ft]	End N/S [ft]	End E/W [ft]
12.25in Open Hole	15.00	1194.00	1179.00	15.00	1179.31	0.00	0.00	-118.44	113.06
8.625in Casing Surface	15.00	1194.00	1179.00	15.00	1179.31	0.00	0.00	-118.44	113.06
7.875in Open Hole	1194.00	8310.00	7116.00	1179.31	7918.51	-118.44	113.06	-1438.37	1416.75

## TARGETS

Name	MD [ft]	TVD [ft]	North [ft]	East [ft]	Grid East [srv ft]	Grid North [srv ft]	Latitude	Longitude	Shape
DRY CREEK 25-27 GEO TARGET 50' RADIUS (2590'FNL & 2590'FEL, REV-1)		6000.00	-1417.04	1417.17	3174620.16	1251562.21	40°01'20.064"N	104°52'35.364"W	circle
DRY CREEK 25-27 HARDLINE 53'W OF GEO TARGET		6000.00	-1417.04	1364.17	3174567.17	1251561.84	40°01'20.064"N	104°52'36.045"W	point
DRY CREEK 25-27 HARDLINE 57'S OF GEO TARGET		6000.00	-1474.04	1417.17	3174620.56	1251505.21	40°01'19.501"N	104°52'35.364"W	point

## WELLPATH COMPOSITION Ref Wellbore: DRY CREEK 25-27 AWB Ref Wellpath: DRY CREEK 25-27 AWP

Start MD [ft]	End MD [ft]	Positional Uncertainty Model	Log Name/Comment	Wellbore
15.00	1149.00	NaviTrak (Standard)	BHI MWD SURVEY 12.25 HOLE <149-1149>	DRY CREEK 25-27 AWB
1149.00	8260.00	NaviTrak (Standard)	BHI MWD SURVEYS 7.875 <1239-8260>	DRY CREEK 25-27 AWB
8260.00	8310.00	Blind Drilling (std)	Projection to bit	DRY CREEK 25-27 AWB



# Actual Wellpath Report

DRY CREEK 25-27 AWP

Page 5 of 5



INTEQ

## REFERENCE WELLPATH IDENTIFICATION

Operator	KERR MCGEE OIL & GAS ONSHORE LP	Slot	SLOT#07 DRY CREEK 25-27 (1169'FNL & 1277'FWL)
Area	COLORADO	Well	DRY CREEK 25-27
Field	WELD COUNTY (KERR MCGEE)	Wellbore	DRY CREEK 25-27 AWB
Facility	SEC.27-T1N-R67W		

## WELLPATH COMMENTS

MD [ft]	Inclination [°]	Azimuth [°]	TVD [ft]	Comment
8260.00	0.400	183.800	7868.51	LAST BHI MWD SURVEY
8310.00	0.400	183.800	7918.51	PROJECTION TO BIT