

Steil Surveying Services, LLC

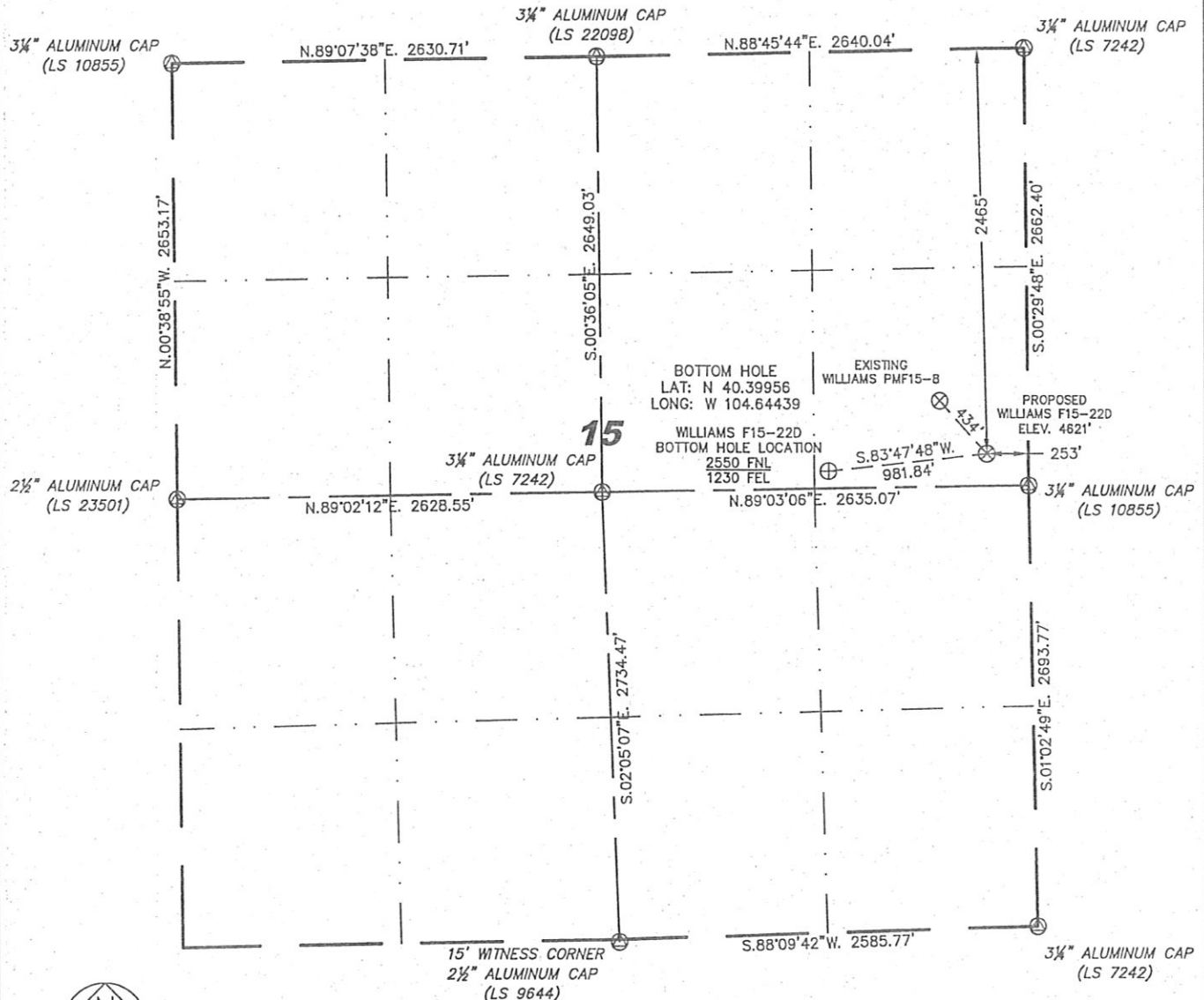
1102 West 19th Street P.O. BOX 2073

Cheyenne, Wyoming 82009

WELL LOCATION CERTIFICATE

THIS MAP DOES NOT REPRESENT A BOUNDARY SURVEY

SECTION 15
TOWNSHIP 5 NORTH
RANGE 65 WEST



0 1000

Scale: 1" = 1000'

IN ACCORDANCE WITH A REQUEST FROM JOE JOHNSON - NOBLE ENERGY INC, STEIL SURVEYING SERVICES, LLC HAS DETERMINED THE LOCATION OF THE WILLIAMS F15-22D WELL TO BE 2465' FNL, 253' FEL, AS MEASURED AT NINETY (90) DEGREES FROM THE SECTION LINES, SECTION 15, TOWNSHIP 5 NORTH, RANGE 65 WEST, 6TH PRINCIPLE MERIDIAN, WELD COUNTY, COLORADO.

I HEREBY CERTIFY THAT THIS WELL LOCATION CERTIFICATE WAS PREPARED BY ME, OR UNDER MY DIRECT SUPERVISION, THAT THE FIELD WORK WAS COMPLETED ON 06/30/2010, FOR AND ON BEHALF OF NOBLE ENERGY INC, THAT IT IS NOT A LAND SURVEY PLAT OR AN IMPROVEMENT SURVEY PLAT, AND THAT IT IS NOT TO BE RELIED UPON FOR ESTABLISHMENT OF FENCE, BUILDING, OR OTHER FUTURE IMPROVEMENT LINES.

NOTES:

- 1) BASIS OF BEARINGS FOR THIS MAP ARE BASED UPON GPS OBSERVATIONS MADE ON 04/17/2008 BETWEEN MONUMENTS LOCATED AT THE SOUTHEAST SECTION CORNER AND THE NORTHEAST SECTION CORNER OF SAID SECTION AND WITH ALL BEARINGS SHOWN HEREON RELATIVE THERETO.
- 2) ELEVATIONS ARE BASED UPON NGS OPUS SOLUTION NAVD 88 DATUM.
- 3) THE NEAREST EXISTING WELL IS: WILLIAMS PMF15-8, 434' NORTHWEST.
- 4) SEE VISIBLE IMPROVEMENTS EXHIBIT FOR ALL IMPROVEMENTS WITHIN 600'.
- 5) THE LOCATION FALLS IN CROP LAND.

LATITUDE & LONGITUDE (NAD 83 SURFACE HOLE):

LATITUDE: N 40.39983'
LONGITUDE: W 104.64088'
PDOP: 2.0

QUARTER-QUARTER: SE/4NE/4

NEAREST PROPERTY LINE: 196' TO THE SOUTH

LEGEND

- (A) FOUND SURVEY MONUMENT PER MONUMENT RECORD - EXCEPTIONS NOTED.
- (C) CALCULATED DIMENSION

Completed 06/30/2010

David C. Holmes
Professional Land Surveyor Registration No. 32828
State of Colorado

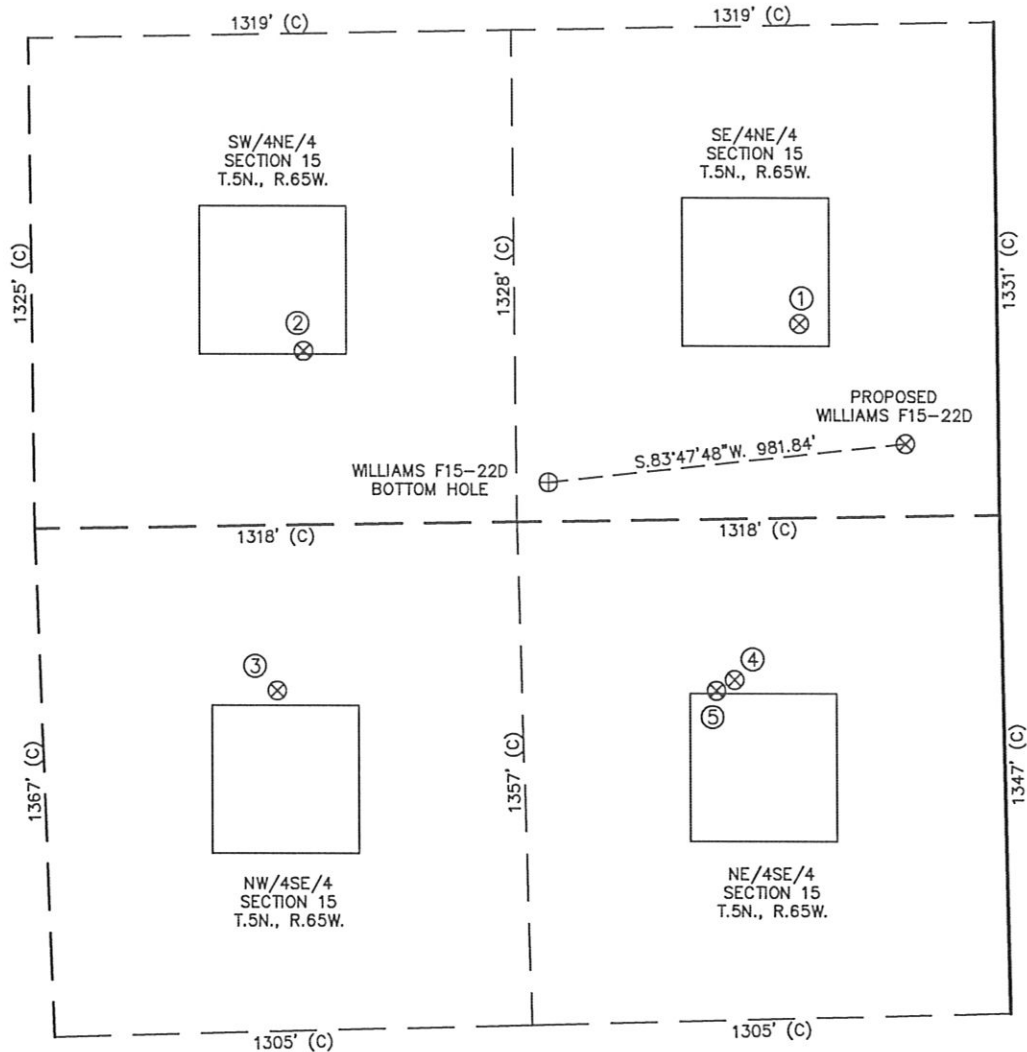
JOB #: 08086



NOTICE: According to Colorado law you MUST commence any legal action based upon any defect in this W.L.C. within three years after you first discover such defect. In no event may any action based upon any defect in this W.L.C. be commenced more than ten years from this said date of the certification shown hereon.

SITE SKETCH - WILLIAMS F15-22D

SECTION 15
TOWNSHIP 5 NORTH
RANGE 65 WEST



| ① | ② | ③ | ④ | ⑤ |
|--|--|--|--|---|
| WILLIAMS PMF15-8 SE/NE SEC. 15 2135' FNL 540' FEL EL 4621' N 40.40072 W 104.64191 PDOP 2.1 | ROBB PMF15-7 SW/NE SEC. 15 2183' FNL 1895' FEL EL 4622' N 40.40055 W 104.64678 PDOP 1.9 | RICHARDSON BR UT B #1 NW/SE SEC. 15 2288' FSL 1981' FEL EL 4626' N 40.39803 W 104.64707 PDOP 1.7 | HSR-KARRE 9-15 NE/SE SEC. 15 2274' FSL 732' FEL EL 4622' N 40.39809 W 104.64259 PDOP 1.6 | KARRE 20-15 DIR NE/SE SEC. 15 2246' FSL 782' FEL EL 4622' N 40.39801 W 104.64277 PDOP 1.6 |

NOTES:

- THIS SKETCH DOES NOT REPRESENT A BOUNDARY SURVEY.
- THE DATUM FOR THE LATITUDES AND LONGITUDES ON THIS SKETCH IS NAD83.

