

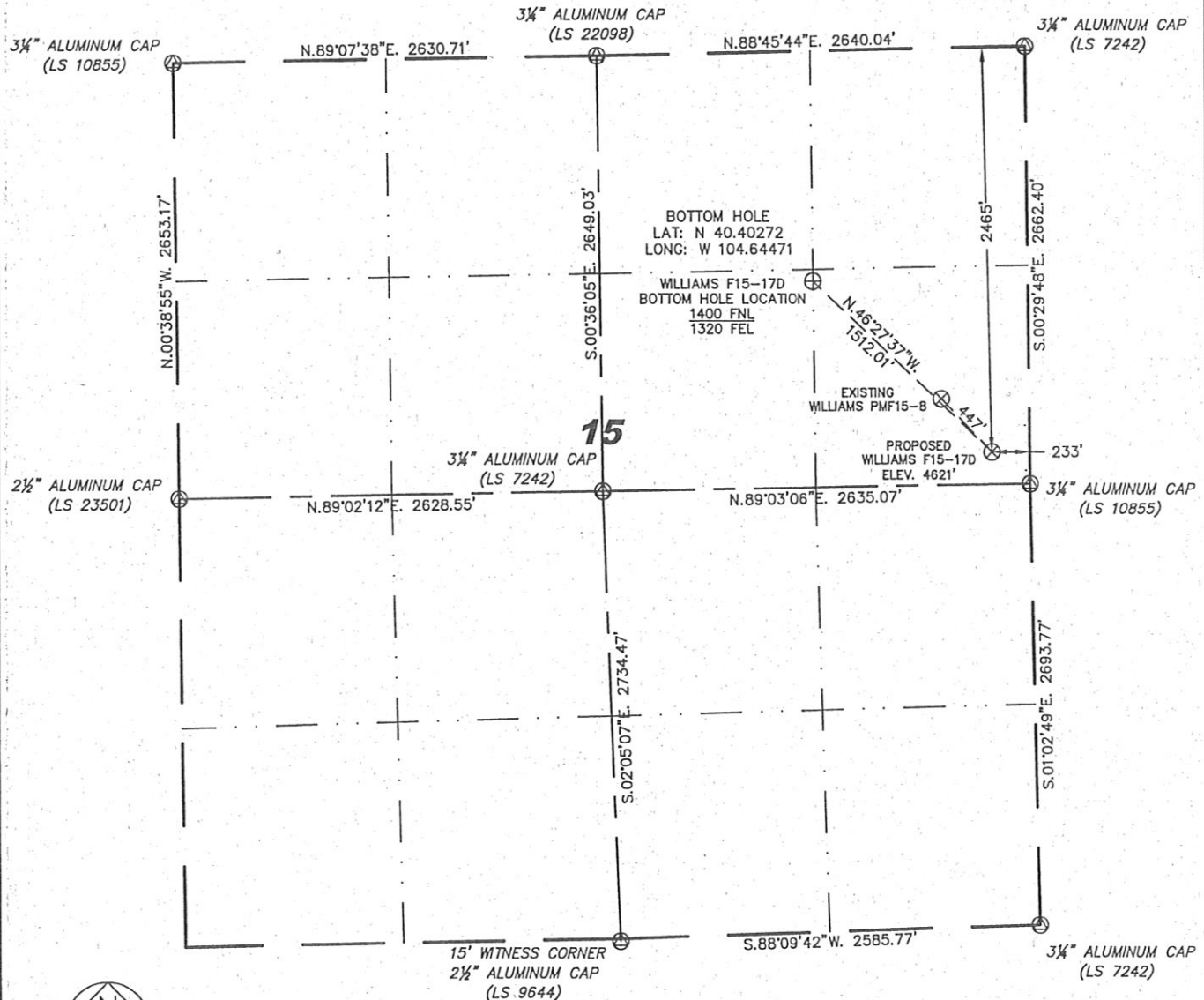
Steil Surveying Services, LLC

1102 West 19th Street P.O. BOX 2073

Cheyenne, Wyoming 82009

WELL LOCATION CERTIFICATE
THIS MAP DOES NOT REPRESENT A BOUNDARY SURVEY

SECTION 15
TOWNSHIP 5 NORTH
RANGE 65 WEST



0 1000

Scale: 1" = 1000'

IN ACCORDANCE WITH A REQUEST FROM JOE JOHNSON - NOBLE ENERGY INC., STEIL SURVEYING SERVICES, LLC HAS DETERMINED THE LOCATION OF THE WILLIAMS F15-17D WELL TO BE 2465' FNL, 233' FEL, AS MEASURED AT NINETY (90) DEGREES FROM THE SECTION LINES, SECTION 15, TOWNSHIP 5 NORTH, RANGE 65 WEST, 6TH PRINCIPLE MERIDIAN, WELD COUNTY, COLORADO.

I HEREBY CERTIFY THAT THIS WELL LOCATION CERTIFICATE WAS PREPARED BY ME, OR UNDER MY DIRECT SUPERVISION, THAT THE FIELD WORK WAS COMPLETED ON 05/30/2010, FOR AND ON BEHALF OF NOBLE ENERGY INC., THAT IT IS NOT A LAND SURVEY PLAT OR AN IMPROVEMENT SURVEY PLAT, AND THAT IT IS NOT TO BE RELIED UPON FOR ESTABLISHMENT OF FENCE, BUILDING, OR OTHER FUTURE IMPROVEMENT LINES.

NOTES:

- 1) BASIS OF BEARINGS FOR THIS MAP ARE BASED UPON GPS OBSERVATIONS MADE ON 04/17/2008 BETWEEN MONUMENTS LOCATED AT THE SOUTHEAST SECTION CORNER AND THE NORTHEAST SECTION CORNER OF SAID SECTION AND WITH ALL BEARINGS SHOWN HEREON RELATIVE THERETO.
- 2) ELEVATIONS ARE BASED UPON NGS OPUS SOLUTION NAVD 88 DATUM.
- 3) THE NEAREST EXISTING WELL IS: WILLIAMS PMF15-B, 447' NORTHWEST.
- 4) SEE VISIBLE IMPROVEMENTS EXHIBIT FOR ALL IMPROVEMENTS WITHIN 600'.
- 5) THE LOCATION FALLS IN CROP LAND.

LATITUDE & LONGITUDE (NAD 83 SURFACE HOLE):

LATITUDE: N 40.39983'
LONGITUDE: W 104.64081'
PDOP: 1.9
QUARTER-QUARTER: SE/4NE/4
NEAREST PROPERTY LINE: 196' TO THE SOUTH

LEGEND

- ⊙ FOUND SURVEY MONUMENT PER MONUMENT RECORD - EXCEPTIONS NOTED.
- (C) CALCULATED DIMENSION

NOTICE: According to Colorado law you MUST commence any legal action based upon any defect in this W.L.C. within three years after you first discover such defect. In no event may any action based upon any defect in this W.L.C. be commenced more than ten years from this sold date of the certification shown hereon.



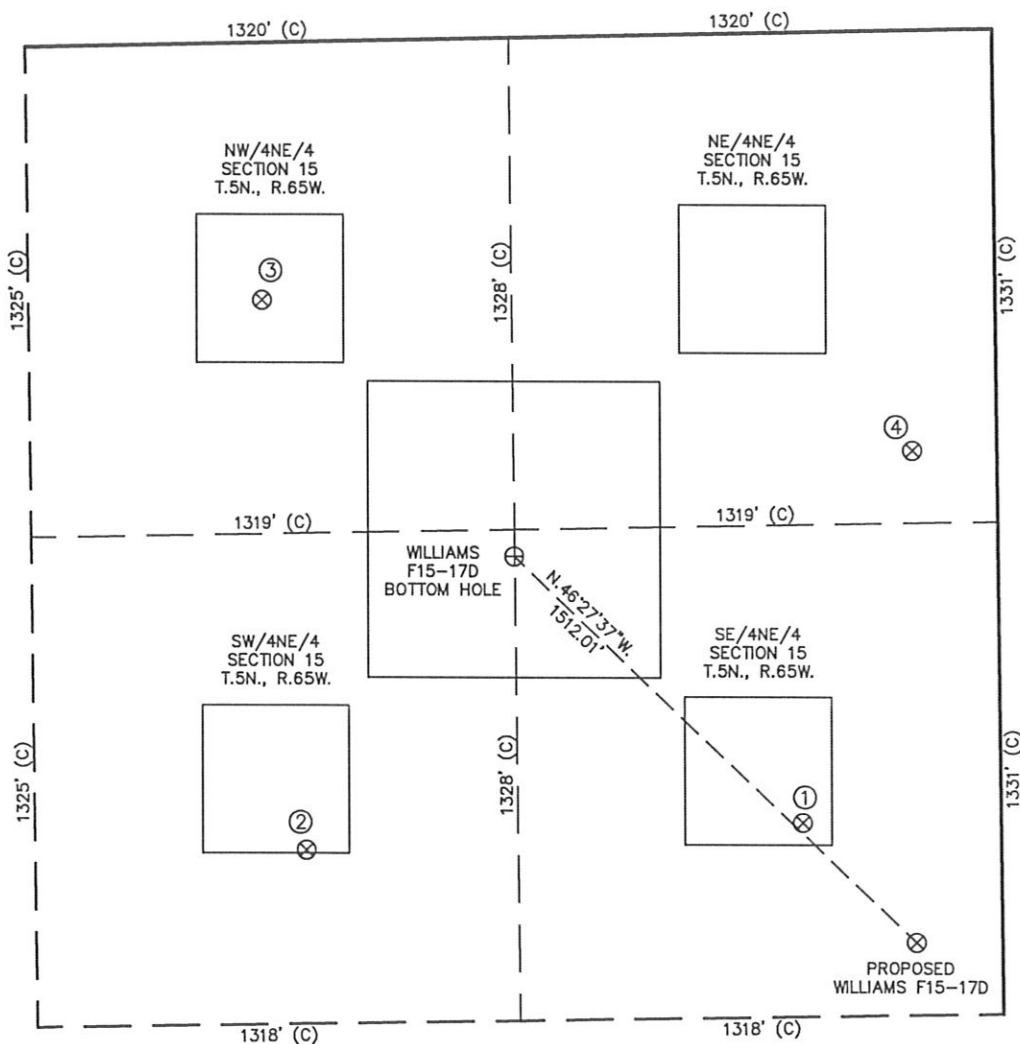
David C. Holmes
Professional Land Surveyor Registration No. 32828
State of Colorado

JOB #: 08086

Completed 06/30/2010

SITE SKETCH - WILLIAMS F15-17D

SECTION 15
TOWNSHIP 5 NORTH
RANGE 65 WEST



①	②	③	④
WILLIAMS PM F15-8 SE/NE SEC. 15 2135' FNL 540' FEL EL 4621' N 40.40072 W 104.64191 PDOP 2.1	ROBB PM F15-7 SW/NE SEC. 15 2183' FNL 1895' FEL EL 4622' N 40.40055 W 104.64677 PDOP 1.9	WILLIAMS 31-15 NW/NE SEC. 15 695' FNL 2001' FEL EL 4642' N 40.40463 W 104.64715 PDOP 2.3	CARLSON HA 41-15 NE/NE SEC. 15 1135' FNL 229' FEL EL 4620' N 40.40348 W 104.64079 PDOP 2.1

NOTES:

- THIS SKETCH DOES NOT REPRESENT A BOUNDARY SURVEY.
- THE DATUM FOR THE LATITUDES AND LONGITUDES ON THIS SKETCH IS NAD83.

