

Well Name: SRC Pratt 41-29D

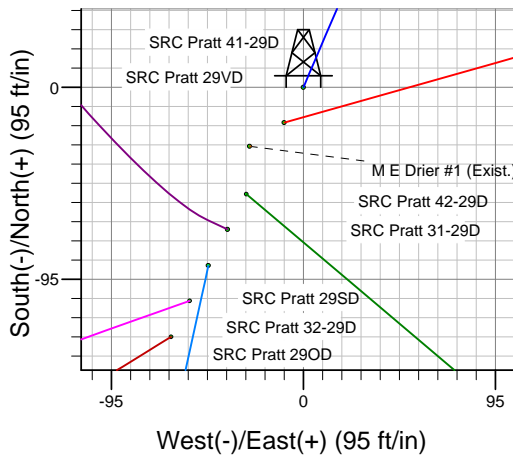
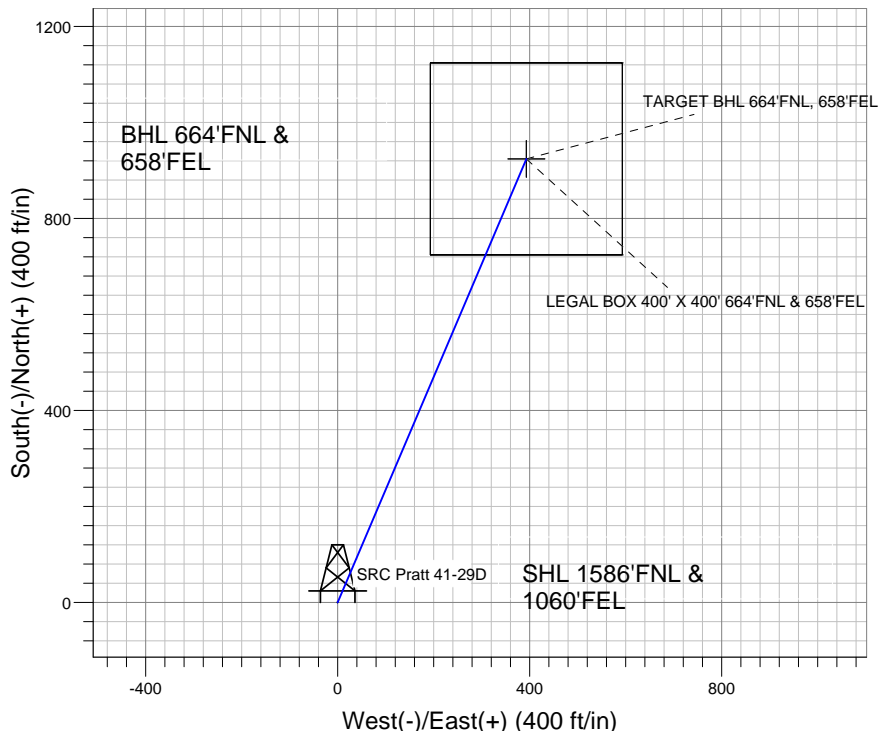
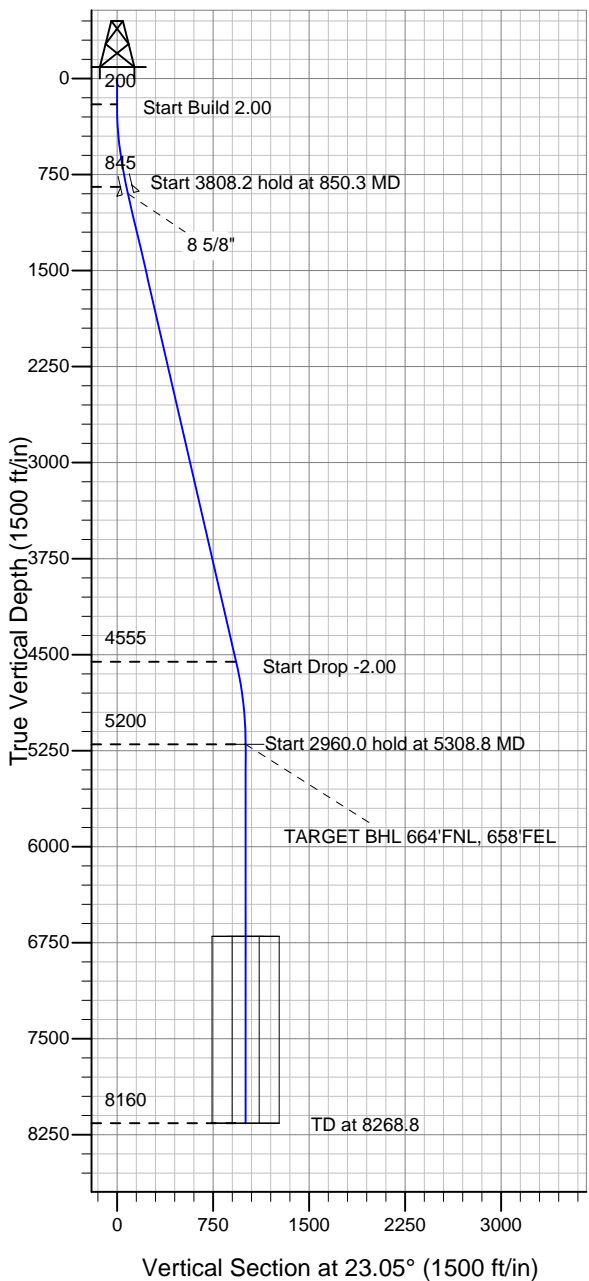
Surface Location: SRC Pratt 41-29D Pad Sec.29-T1N-R68W
North American Datum 1983 , US State Plane 1983 , Colorado Northern Zone

Ground Elevation: 5216.0

+N/-S	+E/-W	Northing	Easting	Latitude	Longitude	Slot
0.0	0.0	1252299.86	3133856.76	40.024960	-105.022025	

Original Well Elev WELL @ 5229.0ft (Original Well Elev)

Synergy Resources



SRC Pratt 41-29D Pad Sec.29-T1N-R68W
SRC Pratt 41-29D
Plan #1 (2-28-11)
17:45, March 01 2011



Azimuths to True North
Magnetic North: 9.01°

Magnetic Field
Strength: 52933.0nT
Dip Angle: 66.71°
Date: 2/28/2011
Model: IGRF2010

WELLBORE TARGET DETAILS (LAT/LONG)

Name	TVD	+N/-S	+E/-W	Latitude	Longitude	Shape
TARGET BHL 664'FNL, 658'FEL	5200.0	923.9	393.2	40.027496	-105.020621	Point
LEGAL BOX 400' X 400' 664'FNL & 658'FEL	6700.0	923.8	393.2	40.027496	-105.020621	Rectangle (Sides: L400.0 W400.0)

SECTION DETAILS

Sec	MD	Inc	Azi	TVD	+N/-S	+E/-W	DLeg	TFace	VSec	Target
1	0.0	0.00	0.00	0.0	0.0	0.0	0.00	0.00	0.0	
2	200.0	0.00	0.00	200.0	0.0	0.0	0.00	0.00	0.0	
3	850.3	13.01	23.05	844.7	67.6	28.8	2.00	23.05	73.5	
4	4658.5	13.01	23.05	4555.3	856.2	364.4	0.00	0.00	930.5	
5	5308.8	0.00	0.00	5200.0	923.9	393.2	2.00	180.00	1004.0	TARGET BHL 664'FNL, 658'FEL
6	8268.8	0.00	0.00	8160.0	923.9	393.2	0.00	0.00	1004.0	



Synergy Resources

SEC.29-T1N-R68W

SRC Pratt 41-29D Pad Sec.29-T1N-R68W

SRC Pratt 41-29D

Wellbore #1

Plan: Plan #1 (2-28-11)

Standard Planning Report

01 March, 2011

Plan Sections										
Measured Depth (ft)	Inclination (°)	Azimuth (°)	Vertical Depth (ft)	+N/-S (ft)	+E/-W (ft)	Dogleg Rate (°/100ft)	Build Rate (°/100ft)	Turn Rate (°/100ft)	TFO (°)	Target
0.0	0.00	0.00	0.0	0.0	0.0	0.00	0.00	0.00	0.00	
200.0	0.00	0.00	200.0	0.0	0.0	0.00	0.00	0.00	0.00	
850.3	13.01	23.05	844.7	67.6	28.8	2.00	2.00	0.00	23.05	
4,658.5	13.01	23.05	4,555.3	856.2	364.4	0.00	0.00	0.00	0.00	
5,308.8	0.00	0.00	5,200.0	923.9	393.2	2.00	-2.00	0.00	180.00	TARGET BHL 664'
8,268.8	0.00	0.00	8,160.0	923.9	393.2	0.00	0.00	0.00	0.00	

Database:	Landmark	Local Co-ordinate Reference:	Well SRC Pratt 41-29D
Company:	Synergy Resources	TVD Reference:	WELL @ 5229.0ft (Original Well Elev)
Project:	SEC.29-T1N-R68W	MD Reference:	WELL @ 5229.0ft (Original Well Elev)
Site:	SRC Pratt 41-29D Pad Sec.29-T1N-R68W	North Reference:	True
Well:	SRC Pratt 41-29D	Survey Calculation Method:	Minimum Curvature
Wellbore:	Wellbore #1		
Design:	Plan #1 (2-28-11)		

Planned Survey									
Measured Depth (ft)	Inclination (°)	Azimuth (°)	Vertical Depth (ft)	+N/-S (ft)	+E/-W (ft)	Vertical Section (ft)	Dogleg Rate (°/100ft)	Build Rate (°/100ft)	Turn Rate (°/100ft)
0.0	0.00	0.00	0.0	0.0	0.0	0.0	0.00	0.00	0.00
40.0	0.00	0.00	40.0	0.0	0.0	0.0	0.00	0.00	0.00
80.0	0.00	0.00	80.0	0.0	0.0	0.0	0.00	0.00	0.00
120.0	0.00	0.00	120.0	0.0	0.0	0.0	0.00	0.00	0.00
160.0	0.00	0.00	160.0	0.0	0.0	0.0	0.00	0.00	0.00
200.0	0.00	0.00	200.0	0.0	0.0	0.0	0.00	0.00	0.00
240.0	0.80	23.05	240.0	0.3	0.1	0.3	2.00	2.00	0.00
280.0	1.60	23.05	280.0	1.0	0.4	1.1	2.00	2.00	0.00
320.0	2.40	23.05	320.0	2.3	1.0	2.5	2.00	2.00	0.00
360.0	3.20	23.05	359.9	4.1	1.7	4.5	2.00	2.00	0.00
400.0	4.00	23.05	399.8	6.4	2.7	7.0	2.00	2.00	0.00
440.0	4.80	23.05	439.7	9.2	3.9	10.0	2.00	2.00	0.00
480.0	5.60	23.05	479.6	12.6	5.4	13.7	2.00	2.00	0.00
520.0	6.40	23.05	519.3	16.4	7.0	17.9	2.00	2.00	0.00
560.0	7.20	23.05	559.1	20.8	8.8	22.6	2.00	2.00	0.00
600.0	8.00	23.05	598.7	25.7	10.9	27.9	2.00	2.00	0.00
640.0	8.80	23.05	638.3	31.0	13.2	33.7	2.00	2.00	0.00
680.0	9.60	23.05	677.8	36.9	15.7	40.1	2.00	2.00	0.00
720.0	10.40	23.05	717.1	43.3	18.4	47.1	2.00	2.00	0.00
760.0	11.20	23.05	756.4	50.2	21.4	54.6	2.00	2.00	0.00
800.0	12.00	23.05	795.6	57.6	24.5	62.6	2.00	2.00	0.00
840.0	12.80	23.05	834.7	65.5	27.9	71.2	2.00	2.00	0.00
850.3	13.01	23.05	844.7	67.6	28.8	73.5	2.00	2.00	0.00
880.0	13.01	23.05	873.7	73.8	31.4	80.2	0.00	0.00	0.00
907.0	13.01	23.05	900.0	79.4	33.8	86.3	0.00	0.00	0.00
8 5/8"									
920.0	13.01	23.05	912.6	82.1	34.9	89.2	0.00	0.00	0.00
960.0	13.01	23.05	951.6	90.3	38.4	98.2	0.00	0.00	0.00
1,000.0	13.01	23.05	990.6	98.6	42.0	107.2	0.00	0.00	0.00
1,040.0	13.01	23.05	1,029.6	106.9	45.5	116.2	0.00	0.00	0.00
1,080.0	13.01	23.05	1,068.5	115.2	49.0	125.2	0.00	0.00	0.00
1,120.0	13.01	23.05	1,107.5	123.5	52.5	134.2	0.00	0.00	0.00
1,160.0	13.01	23.05	1,146.5	131.8	56.1	143.2	0.00	0.00	0.00
1,200.0	13.01	23.05	1,185.5	140.0	59.6	152.2	0.00	0.00	0.00
1,240.0	13.01	23.05	1,224.4	148.3	63.1	161.2	0.00	0.00	0.00
1,280.0	13.01	23.05	1,263.4	156.6	66.7	170.2	0.00	0.00	0.00
1,320.0	13.01	23.05	1,302.4	164.9	70.2	179.2	0.00	0.00	0.00
1,360.0	13.01	23.05	1,341.4	173.2	73.7	188.2	0.00	0.00	0.00
1,400.0	13.01	23.05	1,380.3	181.5	77.2	197.2	0.00	0.00	0.00
1,440.0	13.01	23.05	1,419.3	189.7	80.8	206.2	0.00	0.00	0.00
1,480.0	13.01	23.05	1,458.3	198.0	84.3	215.2	0.00	0.00	0.00
1,520.0	13.01	23.05	1,497.2	206.3	87.8	224.2	0.00	0.00	0.00
1,560.0	13.01	23.05	1,536.2	214.6	91.3	233.2	0.00	0.00	0.00
1,600.0	13.01	23.05	1,575.2	222.9	94.9	242.2	0.00	0.00	0.00
1,640.0	13.01	23.05	1,614.2	231.2	98.4	251.2	0.00	0.00	0.00
1,680.0	13.01	23.05	1,653.1	239.4	101.9	260.2	0.00	0.00	0.00
1,720.0	13.01	23.05	1,692.1	247.7	105.4	269.2	0.00	0.00	0.00
1,760.0	13.01	23.05	1,731.1	256.0	109.0	278.2	0.00	0.00	0.00
1,800.0	13.01	23.05	1,770.1	264.3	112.5	287.2	0.00	0.00	0.00
1,840.0	13.01	23.05	1,809.0	272.6	116.0	296.2	0.00	0.00	0.00
1,880.0	13.01	23.05	1,848.0	280.9	119.5	305.2	0.00	0.00	0.00
1,920.0	13.01	23.05	1,887.0	289.1	123.1	314.2	0.00	0.00	0.00
1,960.0	13.01	23.05	1,926.0	297.4	126.6	323.2	0.00	0.00	0.00
2,000.0	13.01	23.05	1,964.9	305.7	130.1	332.2	0.00	0.00	0.00

Database:	Landmark	Local Co-ordinate Reference:	Well SRC Pratt 41-29D
Company:	Synergy Resources	TVD Reference:	WELL @ 5229.0ft (Original Well Elev)
Project:	SEC.29-T1N-R68W	MD Reference:	WELL @ 5229.0ft (Original Well Elev)
Site:	SRC Pratt 41-29D Pad Sec.29-T1N-R68W	North Reference:	True
Well:	SRC Pratt 41-29D	Survey Calculation Method:	Minimum Curvature
Wellbore:	Wellbore #1		
Design:	Plan #1 (2-28-11)		

Planned Survey									
Measured Depth (ft)	Inclination (°)	Azimuth (°)	Vertical Depth (ft)	+N/-S (ft)	+E/-W (ft)	Vertical Section (ft)	Dogleg Rate (°/100ft)	Build Rate (°/100ft)	Turn Rate (°/100ft)
2,040.0	13.01	23.05	2,003.9	314.0	133.6	341.2	0.00	0.00	0.00
2,080.0	13.01	23.05	2,042.9	322.3	137.2	350.2	0.00	0.00	0.00
2,120.0	13.01	23.05	2,081.9	330.6	140.7	359.2	0.00	0.00	0.00
2,160.0	13.01	23.05	2,120.8	338.8	144.2	368.2	0.00	0.00	0.00
2,200.0	13.01	23.05	2,159.8	347.1	147.7	377.2	0.00	0.00	0.00
2,240.0	13.01	23.05	2,198.8	355.4	151.3	386.2	0.00	0.00	0.00
2,280.0	13.01	23.05	2,237.8	363.7	154.8	395.3	0.00	0.00	0.00
2,320.0	13.01	23.05	2,276.7	372.0	158.3	404.3	0.00	0.00	0.00
2,360.0	13.01	23.05	2,315.7	380.2	161.8	413.3	0.00	0.00	0.00
2,400.0	13.01	23.05	2,354.7	388.5	165.4	422.3	0.00	0.00	0.00
2,440.0	13.01	23.05	2,393.6	396.8	168.9	431.3	0.00	0.00	0.00
2,480.0	13.01	23.05	2,432.6	405.1	172.4	440.3	0.00	0.00	0.00
2,520.0	13.01	23.05	2,471.6	413.4	175.9	449.3	0.00	0.00	0.00
2,560.0	13.01	23.05	2,510.6	421.7	179.5	458.3	0.00	0.00	0.00
2,600.0	13.01	23.05	2,549.5	429.9	183.0	467.3	0.00	0.00	0.00
2,640.0	13.01	23.05	2,588.5	438.2	186.5	476.3	0.00	0.00	0.00
2,680.0	13.01	23.05	2,627.5	446.5	190.0	485.3	0.00	0.00	0.00
2,720.0	13.01	23.05	2,666.5	454.8	193.6	494.3	0.00	0.00	0.00
2,760.0	13.01	23.05	2,705.4	463.1	197.1	503.3	0.00	0.00	0.00
2,800.0	13.01	23.05	2,744.4	471.4	200.6	512.3	0.00	0.00	0.00
2,840.0	13.01	23.05	2,783.4	479.6	204.1	521.3	0.00	0.00	0.00
2,880.0	13.01	23.05	2,822.4	487.9	207.7	530.3	0.00	0.00	0.00
2,920.0	13.01	23.05	2,861.3	496.2	211.2	539.3	0.00	0.00	0.00
2,960.0	13.01	23.05	2,900.3	504.5	214.7	548.3	0.00	0.00	0.00
3,000.0	13.01	23.05	2,939.3	512.8	218.2	557.3	0.00	0.00	0.00
3,040.0	13.01	23.05	2,978.3	521.1	221.8	566.3	0.00	0.00	0.00
3,080.0	13.01	23.05	3,017.2	529.3	225.3	575.3	0.00	0.00	0.00
3,120.0	13.01	23.05	3,056.2	537.6	228.8	584.3	0.00	0.00	0.00
3,160.0	13.01	23.05	3,095.2	545.9	232.3	593.3	0.00	0.00	0.00
3,200.0	13.01	23.05	3,134.2	554.2	235.9	602.3	0.00	0.00	0.00
3,240.0	13.01	23.05	3,173.1	562.5	239.4	611.3	0.00	0.00	0.00
3,280.0	13.01	23.05	3,212.1	570.8	242.9	620.3	0.00	0.00	0.00
3,320.0	13.01	23.05	3,251.1	579.0	246.4	629.3	0.00	0.00	0.00
3,360.0	13.01	23.05	3,290.0	587.3	250.0	638.3	0.00	0.00	0.00
3,400.0	13.01	23.05	3,329.0	595.6	253.5	647.3	0.00	0.00	0.00
3,440.0	13.01	23.05	3,368.0	603.9	257.0	656.3	0.00	0.00	0.00
3,480.0	13.01	23.05	3,407.0	612.2	260.5	665.3	0.00	0.00	0.00
3,520.0	13.01	23.05	3,445.9	620.5	264.1	674.3	0.00	0.00	0.00
3,560.0	13.01	23.05	3,484.9	628.7	267.6	683.3	0.00	0.00	0.00
3,600.0	13.01	23.05	3,523.9	637.0	271.1	692.3	0.00	0.00	0.00
3,640.0	13.01	23.05	3,562.9	645.3	274.6	701.3	0.00	0.00	0.00
3,680.0	13.01	23.05	3,601.8	653.6	278.2	710.3	0.00	0.00	0.00
3,720.0	13.01	23.05	3,640.8	661.9	281.7	719.3	0.00	0.00	0.00
3,760.0	13.01	23.05	3,679.8	670.2	285.2	728.3	0.00	0.00	0.00
3,800.0	13.01	23.05	3,718.8	678.4	288.7	737.3	0.00	0.00	0.00
3,840.0	13.01	23.05	3,757.7	686.7	292.3	746.3	0.00	0.00	0.00
3,880.0	13.01	23.05	3,796.7	695.0	295.8	755.3	0.00	0.00	0.00
3,920.0	13.01	23.05	3,835.7	703.3	299.3	764.3	0.00	0.00	0.00
3,960.0	13.01	23.05	3,874.7	711.6	302.8	773.3	0.00	0.00	0.00
4,000.0	13.01	23.05	3,913.6	719.9	306.4	782.3	0.00	0.00	0.00
4,040.0	13.01	23.05	3,952.6	728.1	309.9	791.3	0.00	0.00	0.00
4,080.0	13.01	23.05	3,991.6	736.4	313.4	800.3	0.00	0.00	0.00
4,120.0	13.01	23.05	4,030.5	744.7	316.9	809.4	0.00	0.00	0.00
4,160.0	13.01	23.05	4,069.5	753.0	320.5	818.4	0.00	0.00	0.00

Database:	Landmark	Local Co-ordinate Reference:	Well SRC Pratt 41-29D
Company:	Synergy Resources	TVD Reference:	WELL @ 5229.0ft (Original Well Elev)
Project:	SEC.29-T1N-R68W	MD Reference:	WELL @ 5229.0ft (Original Well Elev)
Site:	SRC Pratt 41-29D Pad Sec.29-T1N-R68W	North Reference:	True
Well:	SRC Pratt 41-29D	Survey Calculation Method:	Minimum Curvature
Wellbore:	Wellbore #1		
Design:	Plan #1 (2-28-11)		

Planned Survey									
Measured Depth (ft)	Inclination (°)	Azimuth (°)	Vertical Depth (ft)	+N/-S (ft)	+E/-W (ft)	Vertical Section (ft)	Dogleg Rate (°/100ft)	Build Rate (°/100ft)	Turn Rate (°/100ft)
4,200.0	13.01	23.05	4,108.5	761.3	324.0	827.4	0.00	0.00	0.00
4,240.0	13.01	23.05	4,147.5	769.6	327.5	836.4	0.00	0.00	0.00
4,280.0	13.01	23.05	4,186.4	777.8	331.1	845.4	0.00	0.00	0.00
4,320.0	13.01	23.05	4,225.4	786.1	334.6	854.4	0.00	0.00	0.00
4,360.0	13.01	23.05	4,264.4	794.4	338.1	863.4	0.00	0.00	0.00
4,400.0	13.01	23.05	4,303.4	802.7	341.6	872.4	0.00	0.00	0.00
4,440.0	13.01	23.05	4,342.3	811.0	345.2	881.4	0.00	0.00	0.00
4,480.0	13.01	23.05	4,381.3	819.3	348.7	890.4	0.00	0.00	0.00
4,520.0	13.01	23.05	4,420.3	827.5	352.2	899.4	0.00	0.00	0.00
4,560.0	13.01	23.05	4,459.3	835.8	355.7	908.4	0.00	0.00	0.00
4,600.0	13.01	23.05	4,498.2	844.1	359.3	917.4	0.00	0.00	0.00
4,640.0	13.01	23.05	4,537.2	852.4	362.8	926.4	0.00	0.00	0.00
4,658.5	13.01	23.05	4,555.3	856.2	364.4	930.5	0.00	0.00	0.00
4,680.0	12.58	23.05	4,576.2	860.6	366.3	935.3	2.00	-2.00	0.00
4,720.0	11.78	23.05	4,615.3	868.4	369.6	943.7	2.00	-2.00	0.00
4,760.0	10.98	23.05	4,654.5	875.6	372.7	951.6	2.00	-2.00	0.00
4,800.0	10.18	23.05	4,693.8	882.4	375.5	959.0	2.00	-2.00	0.00
4,840.0	9.38	23.05	4,733.3	888.6	378.2	965.8	2.00	-2.00	0.00
4,880.0	8.58	23.05	4,772.8	894.4	380.6	972.0	2.00	-2.00	0.00
4,920.0	7.78	23.05	4,812.4	899.6	382.9	977.7	2.00	-2.00	0.00
4,960.0	6.98	23.05	4,852.0	904.3	384.9	982.8	2.00	-2.00	0.00
5,000.0	6.18	23.05	4,891.8	908.5	386.7	987.4	2.00	-2.00	0.00
5,040.0	5.38	23.05	4,931.6	912.3	388.3	991.4	2.00	-2.00	0.00
5,080.0	4.58	23.05	4,971.4	915.4	389.6	994.9	2.00	-2.00	0.00
5,120.0	3.78	23.05	5,011.3	918.1	390.8	997.8	2.00	-2.00	0.00
5,160.0	2.98	23.05	5,051.2	920.3	391.7	1,000.2	2.00	-2.00	0.00
5,200.0	2.18	23.05	5,091.2	921.9	392.4	1,002.0	2.00	-2.00	0.00
5,240.0	1.38	23.05	5,131.2	923.1	392.9	1,003.2	2.00	-2.00	0.00
5,280.0	0.58	23.05	5,171.2	923.7	393.1	1,003.9	2.00	-2.00	0.00
5,308.8	0.00	0.00	5,200.0	923.9	393.2	1,004.0	2.00	-2.00	0.00
TARGET BHL 664'FNL, 658'FEL									
5,320.0	0.00	0.00	5,211.2	923.9	393.2	1,004.0	0.00	0.00	0.00
5,360.0	0.00	0.00	5,251.2	923.9	393.2	1,004.0	0.00	0.00	0.00
5,400.0	0.00	0.00	5,291.2	923.9	393.2	1,004.0	0.00	0.00	0.00
5,440.0	0.00	0.00	5,331.2	923.9	393.2	1,004.0	0.00	0.00	0.00
5,480.0	0.00	0.00	5,371.2	923.9	393.2	1,004.0	0.00	0.00	0.00
5,520.0	0.00	0.00	5,411.2	923.9	393.2	1,004.0	0.00	0.00	0.00
5,560.0	0.00	0.00	5,451.2	923.9	393.2	1,004.0	0.00	0.00	0.00
5,600.0	0.00	0.00	5,491.2	923.9	393.2	1,004.0	0.00	0.00	0.00
5,640.0	0.00	0.00	5,531.2	923.9	393.2	1,004.0	0.00	0.00	0.00
5,680.0	0.00	0.00	5,571.2	923.9	393.2	1,004.0	0.00	0.00	0.00
5,720.0	0.00	0.00	5,611.2	923.9	393.2	1,004.0	0.00	0.00	0.00
5,760.0	0.00	0.00	5,651.2	923.9	393.2	1,004.0	0.00	0.00	0.00
5,800.0	0.00	0.00	5,691.2	923.9	393.2	1,004.0	0.00	0.00	0.00
5,840.0	0.00	0.00	5,731.2	923.9	393.2	1,004.0	0.00	0.00	0.00
5,880.0	0.00	0.00	5,771.2	923.9	393.2	1,004.0	0.00	0.00	0.00
5,920.0	0.00	0.00	5,811.2	923.9	393.2	1,004.0	0.00	0.00	0.00
5,960.0	0.00	0.00	5,851.2	923.9	393.2	1,004.0	0.00	0.00	0.00
6,000.0	0.00	0.00	5,891.2	923.9	393.2	1,004.0	0.00	0.00	0.00
6,040.0	0.00	0.00	5,931.2	923.9	393.2	1,004.0	0.00	0.00	0.00
6,080.0	0.00	0.00	5,971.2	923.9	393.2	1,004.0	0.00	0.00	0.00
6,120.0	0.00	0.00	6,011.2	923.9	393.2	1,004.0	0.00	0.00	0.00
6,160.0	0.00	0.00	6,051.2	923.9	393.2	1,004.0	0.00	0.00	0.00
6,200.0	0.00	0.00	6,091.2	923.9	393.2	1,004.0	0.00	0.00	0.00

Database:	Landmark	Local Co-ordinate Reference:	Well SRC Pratt 41-29D
Company:	Synergy Resources	TVD Reference:	WELL @ 5229.0ft (Original Well Elev)
Project:	SEC.29-T1N-R68W	MD Reference:	WELL @ 5229.0ft (Original Well Elev)
Site:	SRC Pratt 41-29D Pad Sec.29-T1N-R68W	North Reference:	True
Well:	SRC Pratt 41-29D	Survey Calculation Method:	Minimum Curvature
Wellbore:	Wellbore #1		
Design:	Plan #1 (2-28-11)		

Planned Survey									
Measured Depth (ft)	Inclination (°)	Azimuth (°)	Vertical Depth (ft)	+N/-S (ft)	+E/-W (ft)	Vertical Section (ft)	Dogleg Rate (°/100ft)	Build Rate (°/100ft)	Turn Rate (°/100ft)
6,240.0	0.00	0.00	6,131.2	923.9	393.2	1,004.0	0.00	0.00	0.00
6,280.0	0.00	0.00	6,171.2	923.9	393.2	1,004.0	0.00	0.00	0.00
6,320.0	0.00	0.00	6,211.2	923.9	393.2	1,004.0	0.00	0.00	0.00
6,360.0	0.00	0.00	6,251.2	923.9	393.2	1,004.0	0.00	0.00	0.00
6,400.0	0.00	0.00	6,291.2	923.9	393.2	1,004.0	0.00	0.00	0.00
6,440.0	0.00	0.00	6,331.2	923.9	393.2	1,004.0	0.00	0.00	0.00
6,480.0	0.00	0.00	6,371.2	923.9	393.2	1,004.0	0.00	0.00	0.00
6,520.0	0.00	0.00	6,411.2	923.9	393.2	1,004.0	0.00	0.00	0.00
6,560.0	0.00	0.00	6,451.2	923.9	393.2	1,004.0	0.00	0.00	0.00
6,600.0	0.00	0.00	6,491.2	923.9	393.2	1,004.0	0.00	0.00	0.00
6,640.0	0.00	0.00	6,531.2	923.9	393.2	1,004.0	0.00	0.00	0.00
6,680.0	0.00	0.00	6,571.2	923.9	393.2	1,004.0	0.00	0.00	0.00
6,720.0	0.00	0.00	6,611.2	923.9	393.2	1,004.0	0.00	0.00	0.00
6,760.0	0.00	0.00	6,651.2	923.9	393.2	1,004.0	0.00	0.00	0.00
6,800.0	0.00	0.00	6,691.2	923.9	393.2	1,004.0	0.00	0.00	0.00
6,808.8	0.00	0.00	6,700.0	923.9	393.2	1,004.0	0.00	0.00	0.00
LEGAL BOX 400' X 400' 664'FNL & 658'FEL									
6,840.0	0.00	0.00	6,731.2	923.9	393.2	1,004.0	0.00	0.00	0.00
6,880.0	0.00	0.00	6,771.2	923.9	393.2	1,004.0	0.00	0.00	0.00
6,920.0	0.00	0.00	6,811.2	923.9	393.2	1,004.0	0.00	0.00	0.00
6,960.0	0.00	0.00	6,851.2	923.9	393.2	1,004.0	0.00	0.00	0.00
7,000.0	0.00	0.00	6,891.2	923.9	393.2	1,004.0	0.00	0.00	0.00
7,040.0	0.00	0.00	6,931.2	923.9	393.2	1,004.0	0.00	0.00	0.00
7,080.0	0.00	0.00	6,971.2	923.9	393.2	1,004.0	0.00	0.00	0.00
7,120.0	0.00	0.00	7,011.2	923.9	393.2	1,004.0	0.00	0.00	0.00
7,160.0	0.00	0.00	7,051.2	923.9	393.2	1,004.0	0.00	0.00	0.00
7,200.0	0.00	0.00	7,091.2	923.9	393.2	1,004.0	0.00	0.00	0.00
7,240.0	0.00	0.00	7,131.2	923.9	393.2	1,004.0	0.00	0.00	0.00
7,280.0	0.00	0.00	7,171.2	923.9	393.2	1,004.0	0.00	0.00	0.00
7,320.0	0.00	0.00	7,211.2	923.9	393.2	1,004.0	0.00	0.00	0.00
7,360.0	0.00	0.00	7,251.2	923.9	393.2	1,004.0	0.00	0.00	0.00
7,400.0	0.00	0.00	7,291.2	923.9	393.2	1,004.0	0.00	0.00	0.00
7,440.0	0.00	0.00	7,331.2	923.9	393.2	1,004.0	0.00	0.00	0.00
7,480.0	0.00	0.00	7,371.2	923.9	393.2	1,004.0	0.00	0.00	0.00
7,520.0	0.00	0.00	7,411.2	923.9	393.2	1,004.0	0.00	0.00	0.00
7,560.0	0.00	0.00	7,451.2	923.9	393.2	1,004.0	0.00	0.00	0.00
7,600.0	0.00	0.00	7,491.2	923.9	393.2	1,004.0	0.00	0.00	0.00
7,640.0	0.00	0.00	7,531.2	923.9	393.2	1,004.0	0.00	0.00	0.00
7,680.0	0.00	0.00	7,571.2	923.9	393.2	1,004.0	0.00	0.00	0.00
7,720.0	0.00	0.00	7,611.2	923.9	393.2	1,004.0	0.00	0.00	0.00
7,760.0	0.00	0.00	7,651.2	923.9	393.2	1,004.0	0.00	0.00	0.00
7,800.0	0.00	0.00	7,691.2	923.9	393.2	1,004.0	0.00	0.00	0.00
7,840.0	0.00	0.00	7,731.2	923.9	393.2	1,004.0	0.00	0.00	0.00
7,880.0	0.00	0.00	7,771.2	923.9	393.2	1,004.0	0.00	0.00	0.00
7,920.0	0.00	0.00	7,811.2	923.9	393.2	1,004.0	0.00	0.00	0.00
7,960.0	0.00	0.00	7,851.2	923.9	393.2	1,004.0	0.00	0.00	0.00
8,000.0	0.00	0.00	7,891.2	923.9	393.2	1,004.0	0.00	0.00	0.00
8,040.0	0.00	0.00	7,931.2	923.9	393.2	1,004.0	0.00	0.00	0.00
8,080.0	0.00	0.00	7,971.2	923.9	393.2	1,004.0	0.00	0.00	0.00
8,120.0	0.00	0.00	8,011.2	923.9	393.2	1,004.0	0.00	0.00	0.00
8,160.0	0.00	0.00	8,051.2	923.9	393.2	1,004.0	0.00	0.00	0.00
8,200.0	0.00	0.00	8,091.2	923.9	393.2	1,004.0	0.00	0.00	0.00
8,240.0	0.00	0.00	8,131.2	923.9	393.2	1,004.0	0.00	0.00	0.00

Casing Points						
Measured Depth (ft)	Vertical Depth (ft)		Name	Casing Diameter (")	Hole Diameter (")	
907.0	900.0	8 5/8"		8-5/8	12-1/4	



Directional

Synergy Resources

SEC.29-T1N-R68W

SRC Pratt 41-29D Pad Sec.29-T1N-R68W

SRC Pratt 41-29D

Wellbore #1

Plan #1 (2-28-11)

Anticollision Report

01 March, 2011

Company:	Synergy Resources	Local Co-ordinate Reference:	Well SRC Pratt 41-29D
Project:	SEC.29-T1N-R68W	TVD Reference:	WELL @ 5229.0ft (Original Well Elev)
Reference Site:	SRC Pratt 41-29D Pad Sec.29-T1N-R68W	MD Reference:	WELL @ 5229.0ft (Original Well Elev)
Site Error:	0.0ft	North Reference:	True
Reference Well:	SRC Pratt 41-29D	Survey Calculation Method:	Minimum Curvature
Well Error:	0.0ft	Output errors are at	2.00 sigma
Reference Wellbore	Wellbore #1	Database:	Landmark
Reference Design:	Plan #1 (2-28-11)	Offset TVD Reference:	Offset Datum

Reference	Plan #1 (2-28-11)		
Filter type:	NO GLOBAL FILTER: Using user defined selection & filtering criteria		
Interpolation Method:	Stations	Error Model:	ISCWSA
Depth Range:	Unlimited	Scan Method:	Closest Approach 3D
Results Limited by:	Maximum center-center distance of 10,000.0ft	Error Surface:	Elliptical Conic
Warning Levels Evaluated at:	2.00 Sigma		

Survey Tool Program	Date 3/1/2011			
From (ft)	To (ft)	Survey (Wellbore)	Tool Name	Description
0.0	8,268.8	Plan #1 (2-28-11) (Wellbore #1)	MWD	MWD - Standard

Summary						
Site Name	Reference Measured Depth (ft)	Offset Measured Depth (ft)	Distance Between Centres (ft)	Distance Between Ellipses (ft)	Separation Factor	Warning
Offset Well - Wellbore - Design						
SRC Pratt 41-29D Pad Sec.29-T1N-R68W						
M E Drier #1 (Exist.) - Wellbore #1 - Design #1	200.0	264.0	39.5	38.7	50.015	CC, ES
M E Drier #1 (Exist.) - Wellbore #1 - Design #1	500.0	563.5	54.5	52.4	25.205	SF
SRC Pratt 29VD - Wellbore #1 - Plan #1 (2-28-11)	200.0	200.0	19.9	19.3	30.865	CC, ES
SRC Pratt 29VD - Wellbore #1 - Plan #1 (2-28-11)	500.0	500.8	27.7	25.6	13.568	SF

Offset Design												
SRC Pratt 41-29D Pad Sec.29-T1N-R68W - M E Drier #1 (Exist.) - Wellbore #1 - Design #1												
Survey Program: 0-MWD												
Reference		Offset		Semi Major Axis			Distance					
Measured Depth (ft)	Vertical Depth (ft)	Measured Depth (ft)	Vertical Depth (ft)	Reference (ft)	Offset (ft)	Highside Toolface (°)	Offset Wellbore Centre +N/-S (ft)	+E/-W (ft)	Between Centres (ft)	Between Ellipses (ft)	Minimum Separation (ft)	Separation Factor
0.0	0.0	64.0	64.0	0.0	0.1	-137.60	-29.1	-26.6	39.5			
100.0	100.0	164.0	164.0	0.1	0.2	-137.60	-29.1	-26.6	39.5	39.1	0.34	116.260
200.0	200.0	264.0	264.0	0.3	0.5	-137.60	-29.1	-26.6	39.5	38.7	0.79	50.015 CC, ES
300.0	300.0	364.0	364.0	0.5	0.7	-161.45	-29.1	-26.6	41.1	39.9	1.24	33.057
400.0	399.8	463.8	463.8	0.8	0.9	-163.49	-29.1	-26.6	46.1	44.4	1.70	27.080
500.0	499.5	563.5	563.5	1.0	1.1	-166.05	-29.1	-26.6	54.5	52.4	2.16	25.205 SF
600.0	598.7	662.7	662.7	1.3	1.4	-168.54	-29.1	-26.6	66.4	63.8	2.62	25.303
700.0	697.5	761.5	761.5	1.6	1.6	-170.67	-29.1	-26.6	81.8	78.7	3.09	26.498
800.0	795.6	859.6	859.6	2.0	1.8	-172.38	-29.1	-26.6	100.7	97.1	3.55	28.354
850.3	844.7	908.7	908.7	2.2	1.9	-173.09	-29.1	-26.6	111.5	107.7	3.78	29.460
900.0	893.2	957.2	957.2	2.4	2.0	-173.72	-29.1	-26.6	122.6	118.6	4.02	30.530
1,000.0	990.6	1,054.6	1,054.6	2.9	2.2	-174.69	-29.1	-26.6	145.0	140.5	4.49	32.328
1,100.0	1,088.0	1,152.0	1,152.0	3.3	2.5	-175.41	-29.1	-26.6	167.4	162.5	4.96	33.765
1,200.0	1,185.5	1,249.5	1,249.5	3.8	2.7	-175.95	-29.1	-26.6	189.9	184.4	5.43	34.936
1,300.0	1,282.9	1,346.9	1,346.9	4.2	2.9	-176.38	-29.1	-26.6	212.3	206.4	5.91	35.908
1,400.0	1,380.3	1,444.3	1,444.3	4.7	3.1	-176.73	-29.1	-26.6	234.8	228.4	6.39	36.725
1,500.0	1,477.8	1,541.8	1,541.8	5.2	3.3	-177.01	-29.1	-26.6	257.3	250.4	6.87	37.422
1,600.0	1,575.2	1,639.2	1,639.2	5.6	3.6	-177.25	-29.1	-26.6	279.8	272.4	7.36	38.022
1,700.0	1,672.6	1,736.6	1,736.6	6.1	3.8	-177.46	-29.1	-26.6	302.2	294.4	7.84	38.545
1,800.0	1,770.1	1,834.1	1,834.1	6.6	4.0	-177.63	-29.1	-26.6	324.7	316.4	8.33	39.004
1,900.0	1,867.5	1,931.5	1,931.5	7.0	4.2	-177.79	-29.1	-26.6	347.2	338.4	8.81	39.409
2,000.0	1,964.9	2,028.9	2,028.9	7.5	4.4	-177.92	-29.1	-26.6	369.7	360.4	9.30	39.771
2,100.0	2,062.4	2,126.4	2,126.4	8.0	4.7	-178.04	-29.1	-26.6	392.2	382.4	9.78	40.095

CC - Min centre to center distance or convergent point, SF - min separation factor, ES - min ellipse separation

Company:	Synergy Resources	Local Co-ordinate Reference:	Well SRC Pratt 41-29D
Project:	SEC.29-T1N-R68W	TVD Reference:	WELL @ 5229.0ft (Original Well Elev)
Reference Site:	SRC Pratt 41-29D Pad Sec.29-T1N-R68W	MD Reference:	WELL @ 5229.0ft (Original Well Elev)
Site Error:	0.0ft	North Reference:	True
Reference Well:	SRC Pratt 41-29D	Survey Calculation Method:	Minimum Curvature
Well Error:	0.0ft	Output errors are at	2.00 sigma
Reference Wellbore	Wellbore #1	Database:	Landmark
Reference Design:	Plan #1 (2-28-11)	Offset TVD Reference:	Offset Datum

Offset Design													Offset Site Error: 0.0 ft	
Survey Program: 0-MWD													Offset Well Error: 0.0 ft	
Reference		Offset		Semi Major Axis			Distance						Warning	
Measured Depth (ft)	Vertical Depth (ft)	Measured Depth (ft)	Vertical Depth (ft)	Reference (ft)	Offset (ft)	Highside Toolface (°)	Offset Wellbore Centre +N/-S (ft)	+E/-W (ft)	Between Centres (ft)	Between Ellipses (ft)	Minimum Separation (ft)	Separation Factor		
2,200.0	2,159.8	2,223.8	2,223.8	8.4	4.9	-178.15	-29.1	-26.6	414.7	404.4	10.27	40.386		
2,300.0	2,257.2	2,321.2	2,321.2	8.9	5.1	-178.24	-29.1	-26.6	437.2	426.4	10.75	40.650		
2,400.0	2,354.7	2,418.7	2,418.7	9.4	5.3	-178.33	-29.1	-26.6	459.7	448.4	11.24	40.891		
2,500.0	2,452.1	2,516.1	2,516.1	9.8	5.5	-178.41	-29.1	-26.6	482.2	470.4	11.73	41.110		
2,600.0	2,549.5	2,613.5	2,613.5	10.3	5.7	-178.48	-29.1	-26.6	504.7	492.5	12.22	41.311		
2,700.0	2,647.0	2,711.0	2,711.0	10.8	6.0	-178.54	-29.1	-26.6	527.2	514.5	12.70	41.496		
2,800.0	2,744.4	2,808.4	2,808.4	11.2	6.2	-178.60	-29.1	-26.6	549.7	536.5	13.19	41.667		
2,900.0	2,841.8	2,905.8	2,905.8	11.7	6.4	-178.66	-29.1	-26.6	572.2	558.5	13.68	41.825		
3,000.0	2,939.3	3,003.3	3,003.3	12.2	6.6	-178.71	-29.1	-26.6	594.7	580.5	14.17	41.971		
3,100.0	3,036.7	3,100.7	3,100.7	12.7	6.8	-178.75	-29.1	-26.6	617.2	602.5	14.66	42.108		
3,200.0	3,134.2	3,198.2	3,198.2	13.1	7.1	-178.80	-29.1	-26.6	639.7	624.5	15.15	42.235		
3,300.0	3,231.6	3,295.6	3,295.6	13.6	7.3	-178.84	-29.1	-26.6	662.2	646.5	15.63	42.354		
3,400.0	3,329.0	3,393.0	3,393.0	14.1	7.5	-178.88	-29.1	-26.6	684.7	668.5	16.12	42.465		
3,500.0	3,426.5	3,490.5	3,490.5	14.5	7.7	-178.91	-29.1	-26.6	707.2	690.6	16.61	42.569		
3,600.0	3,523.9	3,587.9	3,587.9	15.0	7.9	-178.95	-29.1	-26.6	729.7	712.6	17.10	42.668		
3,700.0	3,621.3	3,685.3	3,685.3	15.5	8.2	-178.98	-29.1	-26.6	752.2	734.6	17.59	42.760		
3,800.0	3,718.8	3,782.8	3,782.8	16.0	8.4	-179.01	-29.1	-26.6	774.7	756.6	18.08	42.848		
3,900.0	3,816.2	3,880.2	3,880.2	16.4	8.6	-179.04	-29.1	-26.6	797.2	778.6	18.57	42.930		
4,000.0	3,913.6	3,977.6	3,977.6	16.9	8.8	-179.06	-29.1	-26.6	819.7	800.6	19.06	43.008		
4,100.0	4,011.1	4,075.1	4,075.1	17.4	9.0	-179.09	-29.1	-26.6	842.2	822.6	19.55	43.082		
4,200.0	4,108.5	4,172.5	4,172.5	17.8	9.3	-179.11	-29.1	-26.6	864.7	844.6	20.04	43.152		
4,300.0	4,205.9	4,269.9	4,269.9	18.3	9.5	-179.13	-29.1	-26.6	887.2	866.7	20.53	43.218		
4,400.0	4,303.4	4,367.4	4,367.4	18.8	9.7	-179.16	-29.1	-26.6	909.7	888.7	21.02	43.282		
4,500.0	4,400.8	4,464.8	4,464.8	19.3	9.9	-179.18	-29.1	-26.6	932.2	910.7	21.51	43.342		
4,600.0	4,498.2	4,562.2	4,562.2	19.7	10.1	-179.19	-29.1	-26.6	954.7	932.7	22.00	43.399		
4,658.5	4,555.3	4,619.3	4,619.3	20.0	10.3	-179.21	-29.1	-26.6	967.9	945.6	22.28	43.431		
4,700.0	4,595.7	4,659.7	4,659.7	20.2	10.3	-179.22	-29.1	-26.6	976.9	954.4	22.51	43.406		
4,800.0	4,693.8	4,757.8	4,757.8	20.5	10.6	-179.24	-29.1	-26.6	996.3	973.3	22.99	43.329		
4,900.0	4,792.6	4,856.6	4,856.6	20.8	10.8	-179.25	-29.1	-26.6	1,012.2	988.8	23.45	43.169		
5,000.0	4,891.8	4,955.8	4,955.8	21.1	11.0	-179.26	-29.1	-26.6	1,024.7	1,000.9	23.87	42.932		
5,100.0	4,991.3	5,055.3	5,055.3	21.3	11.2	-179.27	-29.1	-26.6	1,033.7	1,009.5	24.25	42.622		
5,200.0	5,091.2	5,155.2	5,155.2	21.4	11.5	-179.28	-29.1	-26.6	1,039.3	1,014.7	24.60	42.243		
5,308.8	5,200.0	5,264.0	5,264.0	21.6	11.7	-156.23	-29.1	-26.6	1,041.4	1,016.4	24.94	41.754		
5,400.0	5,291.2	5,355.2	5,355.2	21.7	11.9	-156.23	-29.1	-26.6	1,041.4	1,016.1	25.30	41.163		
5,500.0	5,391.2	5,455.2	5,455.2	21.8	12.1	-156.23	-29.1	-26.6	1,041.4	1,015.6	25.71	40.506		
5,600.0	5,491.2	5,555.2	5,555.2	21.9	12.4	-156.23	-29.1	-26.6	1,041.4	1,015.2	26.12	39.867		
5,700.0	5,591.2	5,655.2	5,655.2	22.0	12.6	-156.23	-29.1	-26.6	1,041.4	1,014.8	26.53	39.247		
5,800.0	5,691.2	5,755.2	5,755.2	22.1	12.8	-156.23	-29.1	-26.6	1,041.4	1,014.4	26.95	38.643		
5,900.0	5,791.2	5,855.2	5,855.2	22.2	13.0	-156.23	-29.1	-26.6	1,041.4	1,014.0	27.36	38.057		
6,000.0	5,891.2	5,955.2	5,955.2	22.4	13.3	-156.23	-29.1	-26.6	1,041.4	1,013.6	27.78	37.487		
6,100.0	5,991.2	6,055.2	6,055.2	22.5	13.5	-156.23	-29.1	-26.6	1,041.4	1,013.2	28.20	36.933		
6,200.0	6,091.2	6,155.2	6,155.2	22.6	13.7	-156.23	-29.1	-26.6	1,041.4	1,012.7	28.61	36.393		
6,300.0	6,191.2	6,255.2	6,255.2	22.7	13.9	-156.23	-29.1	-26.6	1,041.4	1,012.3	29.03	35.868		
6,400.0	6,291.2	6,355.2	6,355.2	22.9	14.2	-156.23	-29.1	-26.6	1,041.4	1,011.9	29.45	35.357		
6,500.0	6,391.2	6,455.2	6,455.2	23.0	14.4	-156.23	-29.1	-26.6	1,041.4	1,011.5	29.87	34.860		
6,600.0	6,491.2	6,555.2	6,555.2	23.1	14.6	-156.23	-29.1	-26.6	1,041.4	1,011.1	30.29	34.375		
6,700.0	6,591.2	6,655.2	6,655.2	23.3	14.8	-156.23	-29.1	-26.6	1,041.4	1,010.6	30.72	33.903		
6,800.0	6,691.2	6,755.2	6,755.2	23.4	15.1	-156.23	-29.1	-26.6	1,041.4	1,010.2	31.14	33.442		
6,900.0	6,791.2	6,855.2	6,855.2	23.5	15.3	-156.23	-29.1	-26.6	1,041.4	1,009.8	31.56	32.994		
7,000.0	6,891.2	6,955.2	6,955.2	23.7	15.5	-156.23	-29.1	-26.6	1,041.4	1,009.4	31.99	32.556		
7,100.0	6,991.2	7,055.2	7,055.2	23.8	15.7	-156.23	-29.1	-26.6	1,041.4	1,008.9	32.41	32.130		
7,200.0	7,091.2	7,155.2	7,155.2	23.9	16.0	-156.23	-29.1	-26.6	1,041.4	1,008.5	32.84	31.714		

CC - Min centre to center distance or convergent point, SF - min separation factor, ES - min ellipse separation

Company:	Synergy Resources	Local Co-ordinate Reference:	Well SRC Pratt 41-29D
Project:	SEC.29-T1N-R68W	TVD Reference:	WELL @ 5229.0ft (Original Well Elev)
Reference Site:	SRC Pratt 41-29D Pad Sec.29-T1N-R68W	MD Reference:	WELL @ 5229.0ft (Original Well Elev)
Site Error:	0.0ft	North Reference:	True
Reference Well:	SRC Pratt 41-29D	Survey Calculation Method:	Minimum Curvature
Well Error:	0.0ft	Output errors are at	2.00 sigma
Reference Wellbore	Wellbore #1	Database:	Landmark
Reference Design:	Plan #1 (2-28-11)	Offset TVD Reference:	Offset Datum

Offset Design												Offset Site Error:	0.0 ft
SRC Pratt 41-29D Pad Sec.29-T1N-R68W - M E Drier #1 (Exist.) - Wellbore #1 - Design #1												Offset Well Error:	0.0 ft
Survey Program: 0-MWD													
Reference		Offset		Semi Major Axis			Distance						
Measured Depth (ft)	Vertical Depth (ft)	Measured Depth (ft)	Vertical Depth (ft)	Reference (ft)	Offset (ft)	Highside Toolface (°)	Offset Wellbore Centre +N/-S (ft)	+E/-W (ft)	Between Centres (ft)	Between Ellipses (ft)	Minimum Separation (ft)	Separation Factor	Warning
7,300.0	7,191.2	7,255.2	7,255.2	24.1	16.2	-156.23	-29.1	-26.6	1,041.4	1,008.1	33.26	31.307	
7,400.0	7,291.2	7,355.2	7,355.2	24.2	16.4	-156.23	-29.1	-26.6	1,041.4	1,007.7	33.69	30.911	
7,500.0	7,391.2	7,455.2	7,455.2	24.4	16.6	-156.23	-29.1	-26.6	1,041.4	1,007.2	34.12	30.524	
7,600.0	7,491.2	7,555.2	7,555.2	24.5	16.9	-156.23	-29.1	-26.6	1,041.4	1,006.8	34.54	30.146	
7,700.0	7,591.2	7,655.2	7,655.2	24.6	17.1	-156.23	-29.1	-26.6	1,041.4	1,006.4	34.97	29.777	
7,800.0	7,691.2	7,755.2	7,755.2	24.8	17.3	-156.23	-29.1	-26.6	1,041.4	1,006.0	35.40	29.417	
7,900.0	7,791.2	7,855.2	7,855.2	24.9	17.5	-156.23	-29.1	-26.6	1,041.4	1,005.5	35.83	29.064	
8,000.0	7,891.2	7,955.2	7,955.2	25.1	17.8	-156.23	-29.1	-26.6	1,041.4	1,005.1	36.26	28.720	
8,100.0	7,991.2	8,055.2	8,055.2	25.2	18.0	-156.23	-29.1	-26.6	1,041.4	1,004.7	36.69	28.383	
8,200.0	8,091.2	8,155.2	8,155.2	25.4	18.2	-156.23	-29.1	-26.6	1,041.4	1,004.2	37.12	28.054	
8,268.8	8,160.0	8,224.0	8,224.0	25.5	18.4	-156.23	-29.1	-26.6	1,041.4	1,003.9	37.42	27.832	

SRC Pratt 41-29D Pad Sec.29-T1N-R68W - SRC Pratt 29VD - Wellbore #1 - Plan #1 (2-28-11)													Offset Site Error: 0.0 ft	
Survey Program: 0-MWD													Offset Well Error: 0.0 ft	
Reference		Offset		Semi Major Axis			Distance						Warning	
Measured Depth (ft)	Vertical Depth (ft)	Measured Depth (ft)	Vertical Depth (ft)	Reference (ft)	Offset (ft)	Highside Toolface (°)	Offset Wellbore Centre +N/-S (ft)	+E/-W (ft)	Between Centres (ft)	Between Ellipses (ft)	Minimum Separation (ft)	Separation Factor		
0.0	0.0	0.0	0.0	0.0	0.0	-151.43	-17.5	-9.5	19.9					
100.0	100.0	100.0	100.0	0.1	0.1	-151.43	-17.5	-9.5	19.9	19.7	0.20	101.819		
200.0	200.0	200.0	200.0	0.3	0.3	-151.43	-17.5	-9.5	19.9	19.3	0.65	30.865 CC, ES		
300.0	300.0	300.5	300.4	0.5	0.5	-178.49	-17.0	-7.8	20.5	19.4	1.09	18.726		
400.0	399.8	400.8	400.6	0.8	0.8	170.94	-15.6	-2.8	22.7	21.1	1.55	14.637		
500.0	499.5	500.8	500.3	1.0	1.0	157.89	-13.2	5.7	27.7	25.6	2.04	13.568 SF		
600.0	598.7	600.5	599.2	1.3	1.3	146.45	-9.9	17.4	36.1	33.6	2.58	13.992		
700.0	697.5	699.6	697.1	1.6	1.6	138.01	-5.7	32.3	48.2	45.0	3.20	15.068		
800.0	795.6	798.0	793.7	2.0	2.0	132.12	-0.6	50.3	63.7	59.8	3.90	16.333		
850.3	844.7	847.3	841.8	2.2	2.2	129.87	2.3	60.6	72.7	68.5	4.29	16.956		
900.0	893.2	895.9	889.1	2.4	2.4	127.99	5.3	71.3	82.1	77.5	4.69	17.519		
1,000.0	990.6	993.9	984.5	2.9	2.9	125.16	11.4	93.2	101.3	95.8	5.52	18.361		
1,100.0	1,088.0	1,092.0	1,079.9	3.3	3.4	123.23	17.6	115.0	120.6	114.2	6.36	18.958		
1,200.0	1,185.5	1,190.0	1,175.2	3.8	3.8	121.84	23.8	136.9	140.0	132.8	7.22	19.399		
1,300.0	1,282.9	1,288.1	1,270.6	4.2	4.3	120.78	29.9	158.8	159.5	151.4	8.08	19.735		
1,400.0	1,380.3	1,386.1	1,366.0	4.7	4.8	119.96	36.1	180.6	179.0	170.0	8.95	20.000		
1,500.0	1,477.8	1,484.2	1,461.4	5.2	5.3	119.29	42.2	202.5	198.5	188.7	9.82	20.212		
1,600.0	1,575.2	1,582.2	1,556.8	5.6	5.7	118.75	48.4	224.4	218.1	207.4	10.70	20.386		
1,700.0	1,672.6	1,680.3	1,652.2	6.1	6.2	118.29	54.6	246.2	237.6	226.1	11.57	20.532		
1,800.0	1,770.1	1,778.3	1,747.5	6.6	6.7	117.91	60.7	268.1	257.2	244.8	12.45	20.654		
1,900.0	1,867.5	1,876.4	1,842.9	7.0	7.2	117.58	66.9	290.0	276.8	263.5	13.33	20.759		
2,000.0	1,964.9	1,974.4	1,938.3	7.5	7.7	117.29	73.0	311.8	296.4	282.2	14.22	20.850		
2,100.0	2,062.4	2,072.5	2,033.7	8.0	8.2	117.04	79.2	333.7	316.0	300.9	15.10	20.929		
2,200.0	2,159.8	2,170.5	2,129.1	8.4	8.7	116.81	85.4	355.6	335.6	319.7	15.98	20.999		
2,300.0	2,257.2	2,268.6	2,224.5	8.9	9.1	116.62	91.5	377.4	355.3	338.4	16.87	21.061		
2,400.0	2,354.7	2,366.6	2,319.8	9.4	9.6	116.44	97.7	399.3	374.9	357.1	17.75	21.116		
2,500.0	2,452.1	2,464.7	2,415.2	9.8	10.1	116.28	103.8	421.1	394.5	375.9	18.64	21.166		
2,600.0	2,549.5	2,562.7	2,510.6	10.3	10.6	116.14	110.0	443.0	414.1	394.6	19.53	21.210		
2,700.0	2,647.0	2,660.8	2,606.0	10.8	11.1	116.00	116.1	464.9	433.8	413.4	20.41	21.251		
2,800.0	2,744.4	2,758.8	2,701.4	11.2	11.6	115.88	122.3	486.7	453.4	432.1	21.30	21.288		
2,900.0	2,841.8	2,856.9	2,796.7	11.7	12.1	115.77	128.5	508.6	473.0	450.8	22.19	21.322		
3,000.0	2,939.3	2,954.9	2,892.1	12.2	12.6	115.67	134.6	530.5	492.7	469.6	23.07	21.353		
3,100.0	3,036.7	3,053.0	2,987.5	12.7	13.0	115.58	140.8	552.3	512.3	488.3	23.96	21.381		
3,200.0	3,134.2	3,151.0	3,082.9	13.1	13.5	115.49	146.9	574.2	531.9	507.1	24.85	21.408		
3,300.0	3,231.6	3,249.1	3,178.3	13.6	14.0	115.41	153.1	596.1	551.6	525.8	25.74	21.432		
3,400.0	3,329.0	3,347.1	3,273.7	14.1	14.5	115.34	159.3	617.9	571.2	544.6	26.62	21.455		
3,500.0	3,426.5	3,445.2	3,369.0	14.5	15.0	115.27	165.4	639.8	590.9	563.3	27.51	21.476		
3,600.0	3,523.9	3,543.2	3,464.4	15.0	15.5	115.20	171.6	661.7	610.5	582.1	28.40	21.496		
3,700.0	3,621.3	3,641.3	3,559.8	15.5	16.0	115.14	177.7	683.5	630.1	600.8	29.29	21.514		
3,800.0	3,718.8	3,739.3	3,655.2	16.0	16.5	115.08	183.9	705.4	649.8	619.6	30.18	21.532		
3,900.0	3,816.2	3,837.4	3,750.6	16.4	16.9	115.03	190.1	727.2	669.4	638.4	31.07	21.548		
4,000.0	3,913.6	3,935.4	3,846.0	16.9	17.4	114.98	196.2	749.1	689.1	657.1	31.96	21.563		
4,100.0	4,011.1	4,033.5	3,941.3	17.4	17.9	114.93	202.4	771.0	708.7	675.9	32.84	21.578		
4,200.0	4,108.5	4,131.5	4,036.7	17.8	18.4	114.88	208.5	792.8	728.3	694.6	33.73	21.591		
4,300.0	4,205.9	4,229.6	4,132.1	18.3	18.9	114.84	214.7	814.7	748.0	713.4	34.62	21.604		
4,400.0	4,303.4	4,327.6	4,227.5	18.8	19.4	114.80	220.8	836.6	767.6	732.1	35.51	21.616		
4,500.0	4,400.8	4,425.7	4,322.9	19.3	19.9	114.76	227.0	858.4	787.3	750.9	36.40	21.628		
4,600.0	4,498.2	4,523.7	4,418.2	19.7	20.4	114.72	233.2	880.3	806.9	769.6	37.29	21.639		
4,658.5	4,555.3	4,581.1	4,474.1	20.0	20.7	114.70	236.8	893.1	818.4	780.6	37.81	21.645		
4,700.0	4,595.7	4,621.8	4,513.7	20.2	20.9	114.82	239.3	902.2	826.5	788.3	38.18	21.646		
4,800.0	4,693.8	4,731.0	4,620.1	20.5	21.3	114.97	245.8	925.3	844.3	805.3	38.97	21.667		
4,900.0	4,792.6	4,844.4	4,731.7	20.8	21.7	115.08	251.5	945.3	859.1	819.4	39.63	21.676		

Company:	Synergy Resources	Local Co-ordinate Reference:	Well SRC Pratt 41-29D
Project:	SEC.29-T1N-R68W	TVD Reference:	WELL @ 5229.0ft (Original Well Elev)
Reference Site:	SRC Pratt 41-29D Pad Sec.29-T1N-R68W	MD Reference:	WELL @ 5229.0ft (Original Well Elev)
Site Error:	0.0ft	North Reference:	True
Reference Well:	SRC Pratt 41-29D	Survey Calculation Method:	Minimum Curvature
Well Error:	0.0ft	Output errors are at	2.00 sigma
Reference Wellbore	Wellbore #1	Database:	Landmark
Reference Design:	Plan #1 (2-28-11)	Offset TVD Reference:	Offset Datum

Offset Design												Offset Site Error:	0.0ft
Survey Program: 0-MWD												Offset Well Error:	0.0ft
Reference		Offset		Semi Major Axis			Distance						Warning
Measured Depth (ft)	Vertical Depth (ft)	Measured Depth (ft)	Vertical Depth (ft)	Reference (ft)	Offset (ft)	Highside Toolface (°)	Offset Wellbore Centre +N/-S (ft)	+E/-W (ft)	Between Centres (ft)	Between Ellipses (ft)	Minimum Separation (ft)	Separation Factor	
5,000.0	4,891.8	4,958.7	4,844.8	21.1	22.0	115.16	255.9	961.1	870.7	830.5	40.21	21.656	
5,100.0	4,991.3	5,073.7	4,959.1	21.3	22.2	115.22	259.2	972.6	879.1	838.4	40.68	21.610	
5,200.0	5,091.2	5,189.1	5,074.2	21.4	22.4	115.26	261.2	979.7	884.2	843.2	41.06	21.537	
5,308.8	5,200.0	5,314.9	5,200.0	21.6	22.6	138.33	261.9	982.4	886.2	844.8	41.35	21.430	
5,400.0	5,291.2	5,406.0	5,291.2	21.7	22.7	138.33	261.9	982.4	886.2	844.6	41.55	21.327	
5,500.0	5,391.2	5,506.0	5,391.2	21.8	22.8	138.33	261.9	982.4	886.2	844.4	41.79	21.206	
5,600.0	5,491.2	5,606.0	5,491.2	21.9	22.9	138.33	261.9	982.4	886.2	844.1	42.03	21.085	
5,700.0	5,591.2	5,706.0	5,591.2	22.0	23.0	138.33	261.9	982.4	886.2	843.9	42.27	20.963	
5,800.0	5,691.2	5,806.0	5,691.2	22.1	23.1	138.33	261.9	982.4	886.2	843.6	42.52	20.841	
5,900.0	5,791.2	5,906.0	5,791.2	22.2	23.2	138.33	261.9	982.4	886.2	843.4	42.77	20.719	
6,000.0	5,891.2	6,006.0	5,891.2	22.4	23.4	138.33	261.9	982.4	886.2	843.1	43.02	20.597	
6,100.0	5,991.2	6,106.0	5,991.2	22.5	23.5	138.33	261.9	982.4	886.2	842.9	43.28	20.475	
6,200.0	6,091.2	6,206.0	6,091.2	22.6	23.6	138.33	261.9	982.4	886.2	842.6	43.54	20.353	
6,300.0	6,191.2	6,306.0	6,191.2	22.7	23.7	138.33	261.9	982.4	886.2	842.4	43.80	20.230	
6,400.0	6,291.2	6,406.0	6,291.2	22.9	23.9	138.33	261.9	982.4	886.2	842.1	44.07	20.108	
6,500.0	6,391.2	6,506.0	6,391.2	23.0	24.0	138.33	261.9	982.4	886.2	841.8	44.34	19.986	
6,600.0	6,491.2	6,606.0	6,491.2	23.1	24.1	138.33	261.9	982.4	886.2	841.6	44.61	19.864	
6,700.0	6,591.2	6,706.0	6,591.2	23.3	24.2	138.33	261.9	982.4	886.2	841.3	44.89	19.743	
6,800.0	6,691.2	6,806.0	6,691.2	23.4	24.4	138.33	261.9	982.4	886.2	841.0	45.16	19.621	
6,900.0	6,791.2	6,906.0	6,791.2	23.5	24.5	138.33	261.9	982.4	886.2	840.7	45.44	19.500	
7,000.0	6,891.2	7,006.0	6,891.2	23.7	24.6	138.33	261.9	982.4	886.2	840.4	45.73	19.380	
7,100.0	6,991.2	7,106.0	6,991.2	23.8	24.8	138.33	261.9	982.4	886.2	840.2	46.01	19.259	
7,200.0	7,091.2	7,206.0	7,091.2	23.9	24.9	138.33	261.9	982.4	886.2	839.9	46.30	19.139	
7,300.0	7,191.2	7,306.0	7,191.2	24.1	25.0	138.33	261.9	982.4	886.2	839.6	46.59	19.020	
7,400.0	7,291.2	7,406.0	7,291.2	24.2	25.2	138.33	261.9	982.4	886.2	839.3	46.88	18.901	
7,500.0	7,391.2	7,506.0	7,391.2	24.4	25.3	138.33	261.9	982.4	886.2	839.0	47.18	18.782	
7,600.0	7,491.2	7,606.0	7,491.2	24.5	25.5	138.33	261.9	982.4	886.2	838.7	47.48	18.664	
7,700.0	7,591.2	7,706.0	7,591.2	24.6	25.6	138.33	261.9	982.4	886.2	838.4	47.78	18.547	
7,800.0	7,691.2	7,806.0	7,691.2	24.8	25.7	138.33	261.9	982.4	886.2	838.1	48.08	18.430	
7,900.0	7,791.2	7,906.0	7,791.2	24.9	25.9	138.33	261.9	982.4	886.2	837.8	48.39	18.314	
8,000.0	7,891.2	8,006.0	7,891.2	25.1	26.0	138.33	261.9	982.4	886.2	837.5	48.70	18.198	
8,100.0	7,991.2	8,106.0	7,991.2	25.2	26.2	138.33	261.9	982.4	886.2	837.2	49.00	18.083	
8,200.0	8,091.2	8,206.0	8,091.2	25.4	26.3	138.33	261.9	982.4	886.2	836.9	49.32	17.969	
8,268.8	8,160.0	8,274.9	8,160.0	25.5	26.4	138.33	261.9	982.4	886.2	836.6	49.53	17.891	

Company: Synergy Resources
Project: SEC.29-T1N-R68W
Reference Site: SRC Pratt 41-29D Pad Sec.29-T1N-R68W
Site Error: 0.0ft
Reference Well: SRC Pratt 41-29D
Well Error: 0.0ft
Reference Wellbore: Wellbore #1
Reference Design: Plan #1 (2-28-11)

Local Co-ordinate Reference: Well SRC Pratt 41-29D
TVD Reference: WELL @ 5229.0ft (Original Well Elev)
MD Reference: WELL @ 5229.0ft (Original Well Elev)
North Reference: True
Survey Calculation Method: Minimum Curvature
Output errors are at 2.00 sigma
Database: Landmark
Offset TVD Reference: Offset Datum

Reference Depths are relative to WELL @ 5229.0ft (Original Well Elev) Coordinates are relative to: SRC Pratt 41-29D
Offset Depths are relative to Offset Datum Coordinate System is US State Plane 1983, Colorado Northern Zone
Central Meridian is -105.500000 ° Grid Convergence at Surface is: 0.31°



Company:	Synergy Resources	Local Co-ordinate Reference:	Well SRC Pratt 41-29D
Project:	SEC.29-T1N-R68W	TVD Reference:	WELL @ 5229.0ft (Original Well Elev)
Reference Site:	SRC Pratt 41-29D Pad Sec.29-T1N-R68W	MD Reference:	WELL @ 5229.0ft (Original Well Elev)
Site Error:	0.0ft	North Reference:	True
Reference Well:	SRC Pratt 41-29D	Survey Calculation Method:	Minimum Curvature
Well Error:	0.0ft	Output errors are at	2.00 sigma
Reference Wellbore	Wellbore #1	Database:	Landmark
Reference Design:	Plan #1 (2-28-11)	Offset TVD Reference:	Offset Datum

Reference Depths are relative to WELL @ 5229.0ft (Original Well Elev) Coordinates are relative to: SRC Pratt 41-29D
Offset Depths are relative to Offset Datum Coordinate System is US State Plane 1983, Colorado Northern Zone
Central Meridian is -105.500000 ° Grid Convergence at Surface is: 0.31°

