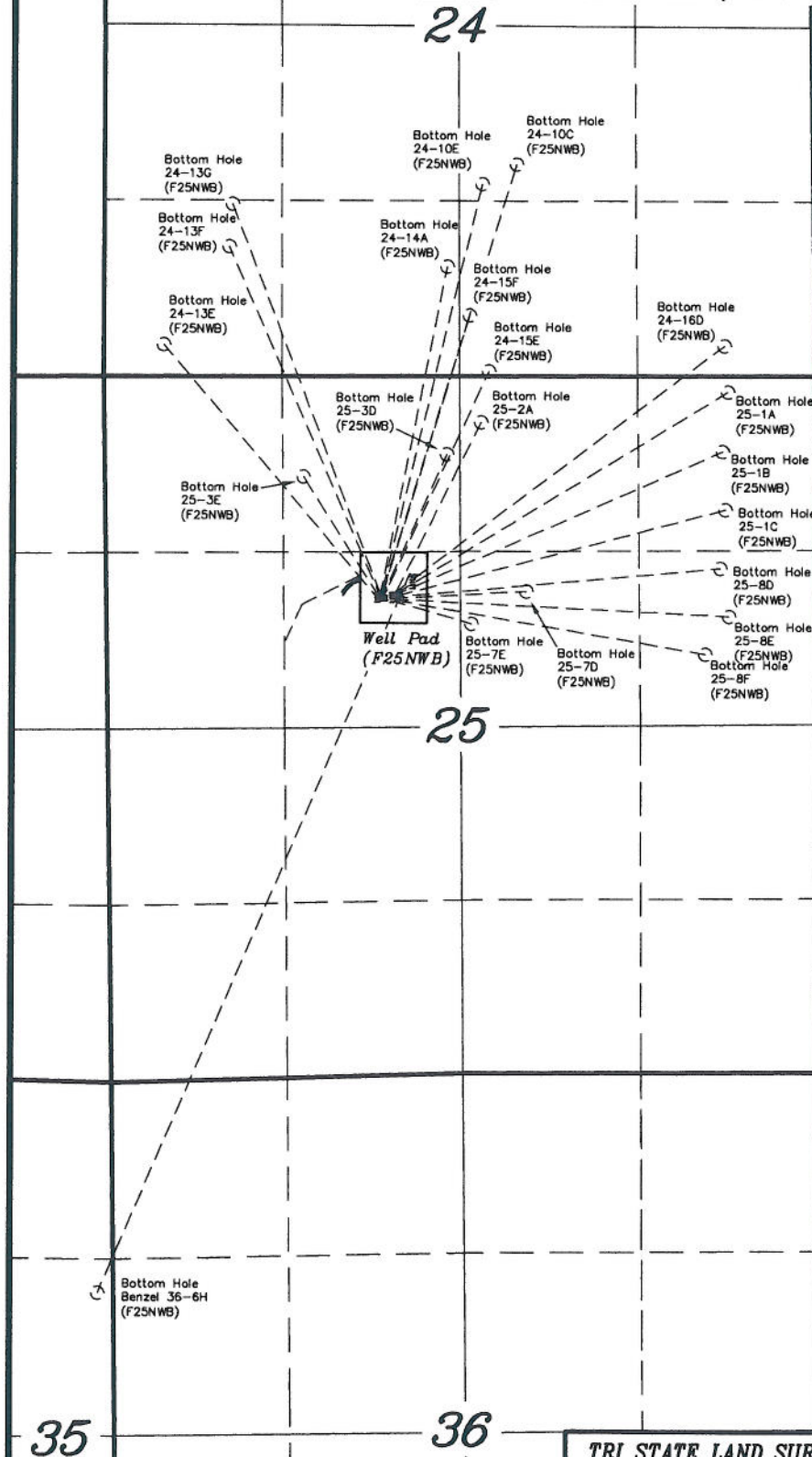


T6S, R93W, 6th P.M. EnCana OIL & GAS (USA) INC

GENERAL MULTI WELL PLAN
SECTION DRILLING MAP
WELL PAD (F25NWB) EXPANSION



TRI STATE LAND SURVEYING & CONSULTING

180 NORTH VERNAL AVE. - VERNAL, UTAH 84078
(435) 781-2501

DATE SURVEYED:
11-08-10

SURVEYED BY: C.D.S.

DATE DRAWN:
02-08-11

DRAWN BY: L.C.S.

REVISED:
L.C.S. 02-28-11

SCALE: 1" = 1000'

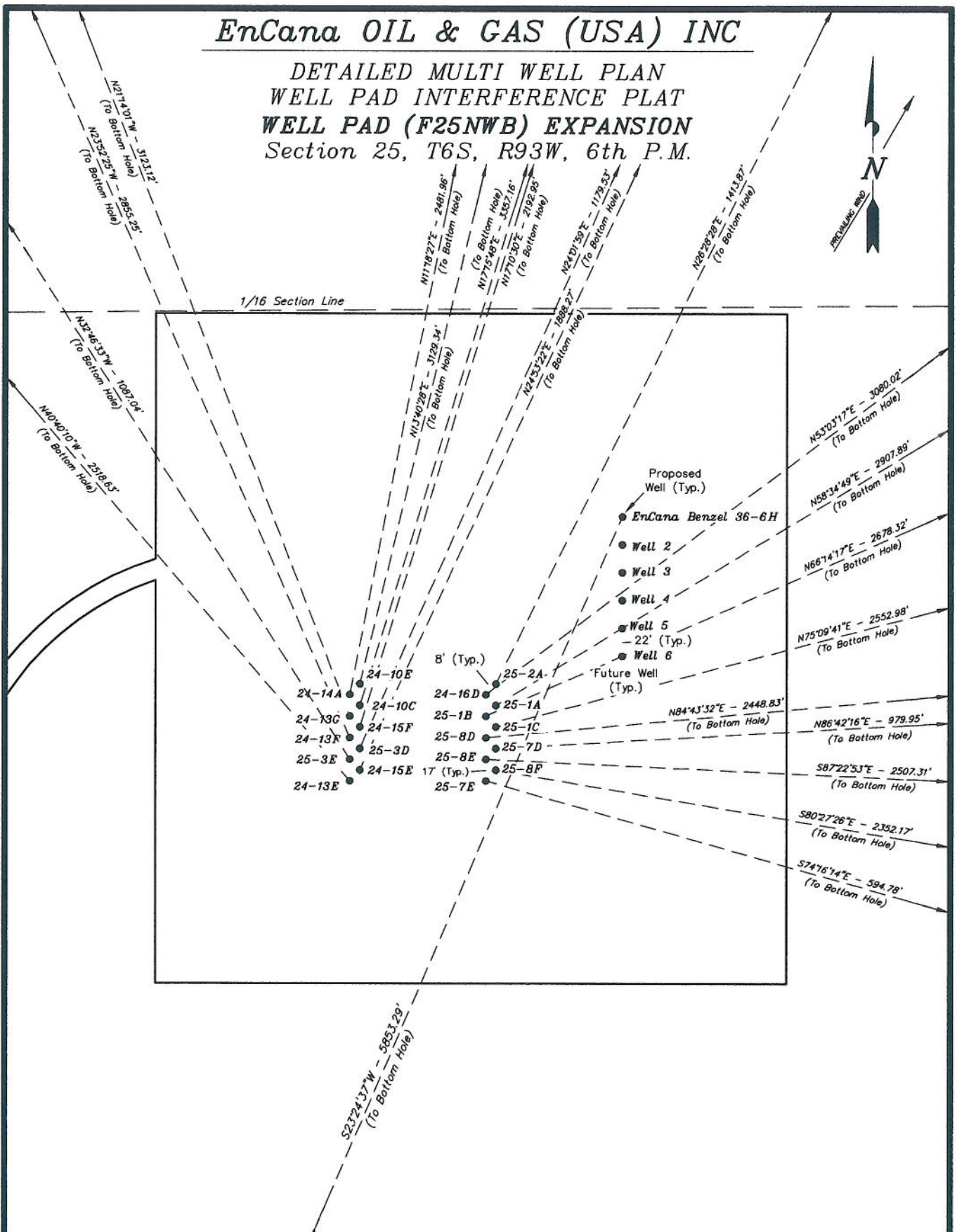
SHEET

1

OF 11

EnCana OIL & GAS (USA) INC

DETAILED MULTI WELL PLAN WELL PAD INTERFERENCE PLAT WELL PAD (F25NWB) EXPANSION Section 25, T6S, R93W, 6th P.M.



SURVEYED BY: C.D.S.	DATE SURVEYED: 11-08-10
DRAWN BY: L.C.S.	DATE DRAWN: 02-08-11
SCALE: 1" = 100'	REVISED: 02-28-11

Tri State
Land Surveying, Inc.
180 NORTH VERNAL AVE. VERNAL, UTAH 84078
(435) 781-2501

SHEET
3a
OF 11