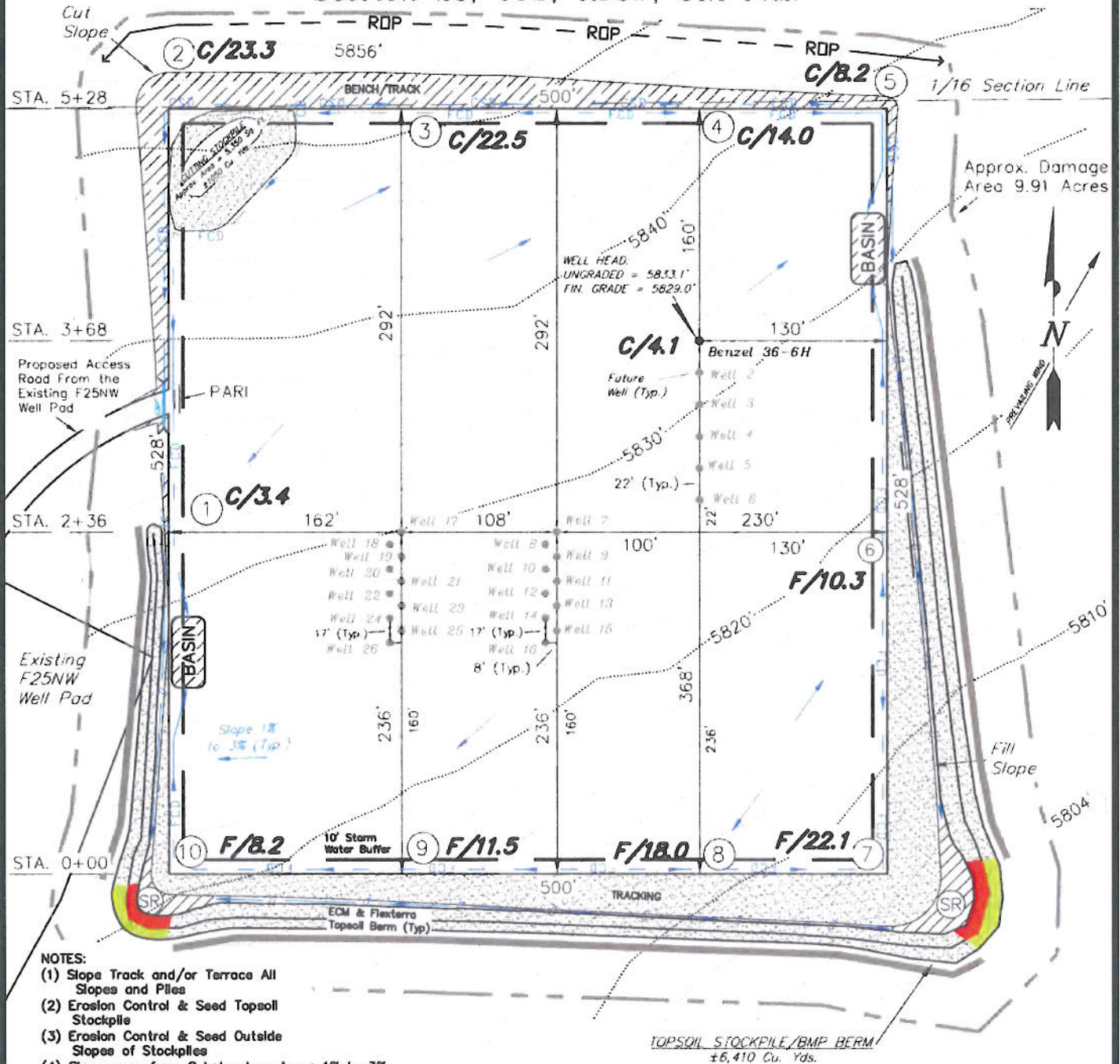


ENCANA OIL & GAS (USA) INC

CONSTRUCTION LAYOUT DRAWING

WELL PAD (F25NWB)

Section 25, T6S, R93W, 6th P.M.



NOTES:

- (1) Slope Track and/or Terrace All Slopes and Piles
- (2) Erosion Control & Seed Topsoil Stockpile
- (3) Erosion Control & Seed Outside Slopes of Stockpiles
- (4) Slope away from Substructure Areas 1% to 3% to Flow Control Ditch on Entire Pad
- (5) When Possible the Cut and Fill Slopes Directly Behind the Proposed Production Equipment Should be Reclaimed with 3:1 Slopes and Topsoil Spread During Pad Construction.
- (6) BMP Selection and Position may Change Depending on Actual Conditions Encountered During the Construction Process.
- (7) All CMP's Shall have Inlet and Outlet Protection.
- (8) All BMP's to be constructed to EnCana Oil & Gas (USA) Inc. BMP Manual's Specifications.

LEGEND:

- PARI = PAD/ACCESS ROAD INTERFACE
- SR = SEDIMENT RESERVOIR
- ST = SEDIMENT TRAP
- R.O.P. = RUN-ON PROTECTION
- PERMETER CONTROL (WATTLES)
- CDM = CHECK DAM
- FCD = FLOW CONTROL DITCH
- ECB = EROSION CONTROL BLANKET
- D = FILL DIVERSION TO SEDIMENT TRAP
- CSD = CUT SLOPE DIVERSION (BERM TOE OF CUT SLOPE)
- VGB = VEGETATION BUFFER (UNDISTURBED LAND INSIDE PC)
- SEED, ECB & FLEX
- LEVEL SPREADER

NOTE:

The topsoil & waste material area is calculated as being mounds containing 6,410 cubic yards of dirt (a 15% fluff factor is included). The mound areas are calculated with push slopes of 2.5:1 & fall slopes of 2.5:1.

SURVEYED BY: C.D.S. DATE SURVEYED: 11-08-10
 DRAWN BY: L.C.S. DATE DRAWN: 02-08-11
 SCALE: 1" = 100' REVISED:

Tri State
 Land Surveying, Inc.
 180 NORTH VERNAL AVE. VERNAL, UTAH 84078
 (435) 781-2501

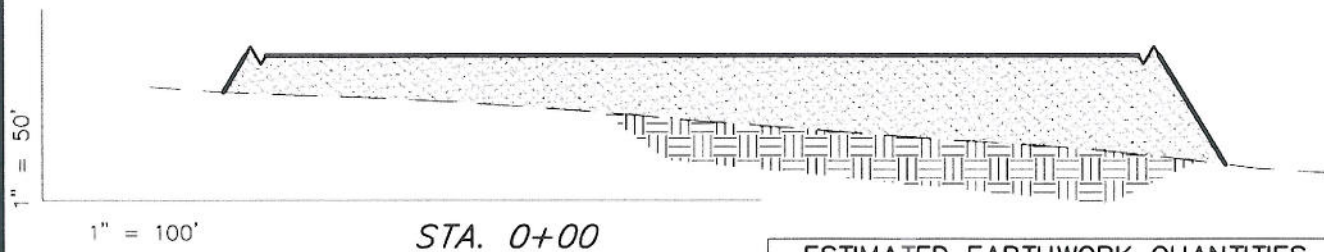
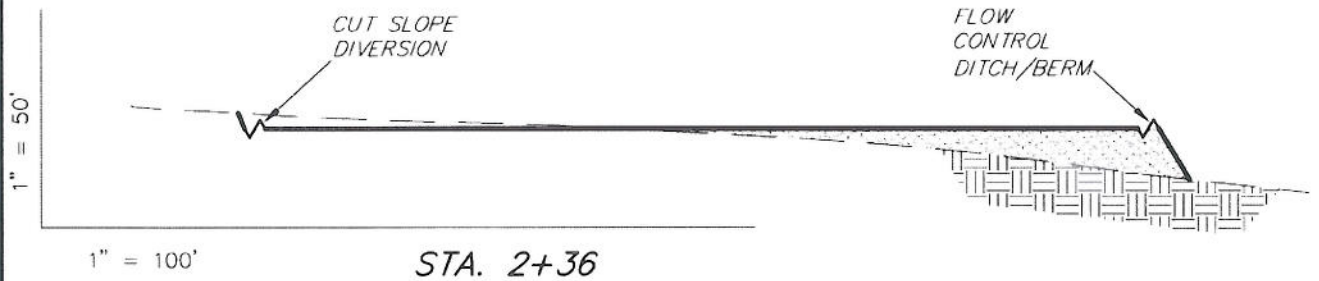
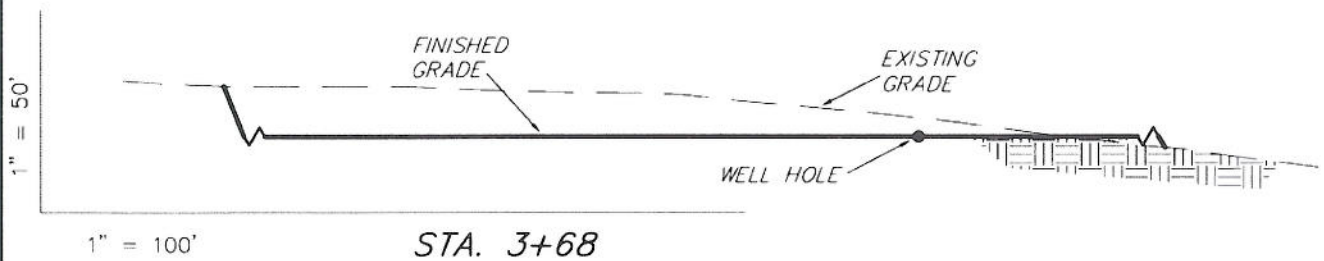
SHEET
 4
 OF 11

ENCANA OIL & GAS (USA) INC

CROSS SECTIONS

WELL PAD (F25NWB) EXPANSION

Section 25, T6S, R93W, 6th P.M.



NOTE:
UNLESS OTHERWISE NOTED
CUT SLOPES ARE AT 1:1
FILL SLOPES ARE AT 1.5:1

ESTIMATED EARTHWORK QUANTITIES (No Shrink or swell adjustments have been used) (Expressed in Cubic Yards)

| ITEM | CUT | FILL | 6" TOPSOIL | EXCESS |
|--------|--------|--------|------------------------------------|--------|
| PAD | 48,010 | 48,000 | Topsoil is not included in Pad Cut | 10 |
| PIT | N/A | N/A | | N/A |
| TOTALS | 48,010 | 48,000 | 5,570 | 10 |

SURVEYED BY: C.D.S. DATE SURVEYED: 11-08-10
DRAWN BY: L.C.S. DATE DRAWN: 02-08-11
SCALE: 1" = 100' REVISED:

Tri State
Land Surveying, Inc.
180 NORTH VERNAL AVE. VERNAL, UTAH 84078
(435) 781-2501

SHEET
5
OF 11