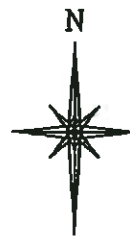
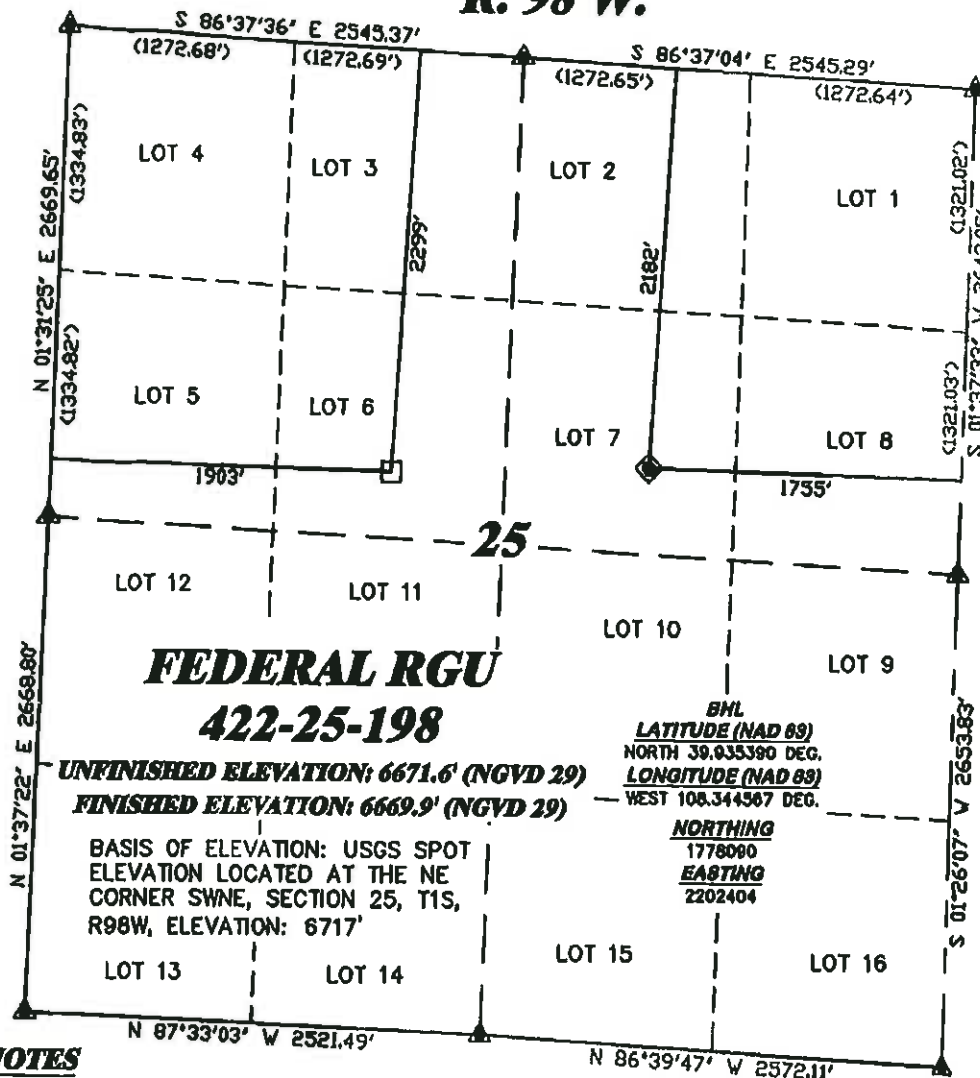


R. 98 W.



SCALE 1" = 1000'

T. 1 S.



LATITUDE (NAD 83)
NORTH 39.935604 DEG.
LONGITUDE (NAD 83)
WEST 108.339479 DEG.

NORTHING (NAD 83)
1778123.45
EASTING (NAD 83)
2203832.32

BHL
LATITUDE (NAD 83)
NORTH 39.935390 DEG.
LONGITUDE (NAD 83)
WEST 108.344567 DEG.

NORTHING
1778090
EASTING
2202404

BASIS OF BEARING/DATUM
SPCS CO NORTH NAD 27
BASED ON NGS TRIANGULATION
STATION "BINER"

UNFINISHED ELEVATION: 6671.6' (NGVD 29)
FINISHED ELEVATION: 6669.9' (NGVD 29)

BASIS OF ELEVATION: USGS SPOT
ELEVATION LOCATED AT THE NE
CORNER SWNE, SECTION 25, T1S,
R98W, ELEVATION: 6717'

NOTES

GPS OPERATOR MARK BESSIE
OBSERVED A PDOP OF 2.4.
ALL GPS OBSERVATIONS ARE IN
COMPLIANCE WITH COGCC RULE No.218.



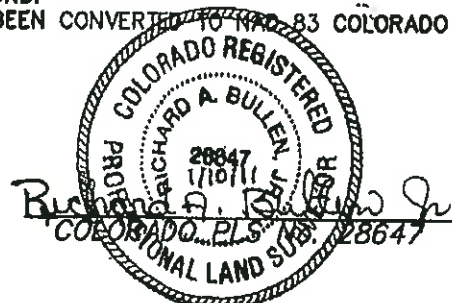
SURVEYOR'S STATEMENT

I, RICHARD A. BULLEN JR., AN EMPLOYEE AND AGENT ON BEHALF OF D.R. GRIFFIN & ASSOCIATES, INC. STATE THE PLAT HEREON IS A CORRECT REPRESENTATION OF A SURVEY MADE UNDER MY SUPERVISION ON OCTOBER 2, 2008 OF THE SHOWN FEDERAL RGU 422-25-198 AS STAKED ON THE GROUND. FIELD SURVEY DATUM IS NAD 27 COLORADO NORTH. VALUES HAVE BEEN CONVERTED TO NAD 83 COLORADO CENTRAL (X,Y) FOR PURPOSES OF THIS PLAT.

LEGEND

- ◆ WELL LOCATION
- BOTTOM HOLE LOC. (APPROX)
- FOUND MONUMENT
- ▲ PREVIOUSLY FOUND MONUMENT

RGU 32-25-198 PAD



GRIFFIN & ASSOCIATES, INC.
1414 ELK ST., ROCK SPRINGS, WY 82801

(307) 362-6028

PLAT OF DRILLING LOCATION
FOR
WILLIAMS PRODUCTION RMT COMPANY
2182' F/NL & 1755' F/EL, SWNE, SECTION 25,
T. 1 S., R. 98 W., 6th P.M.
RIO BLANCO COUNTY, COLORADO

DRAWN: 1/30/09 - MMM

SCALE: 1" = 1000'

REVISED: 1/10/11 - DEH

DRG JOB No. 14648

MISC. REVISIONS

PLAT 1