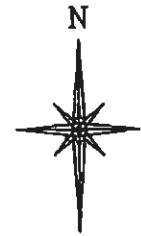


R. 98 W.



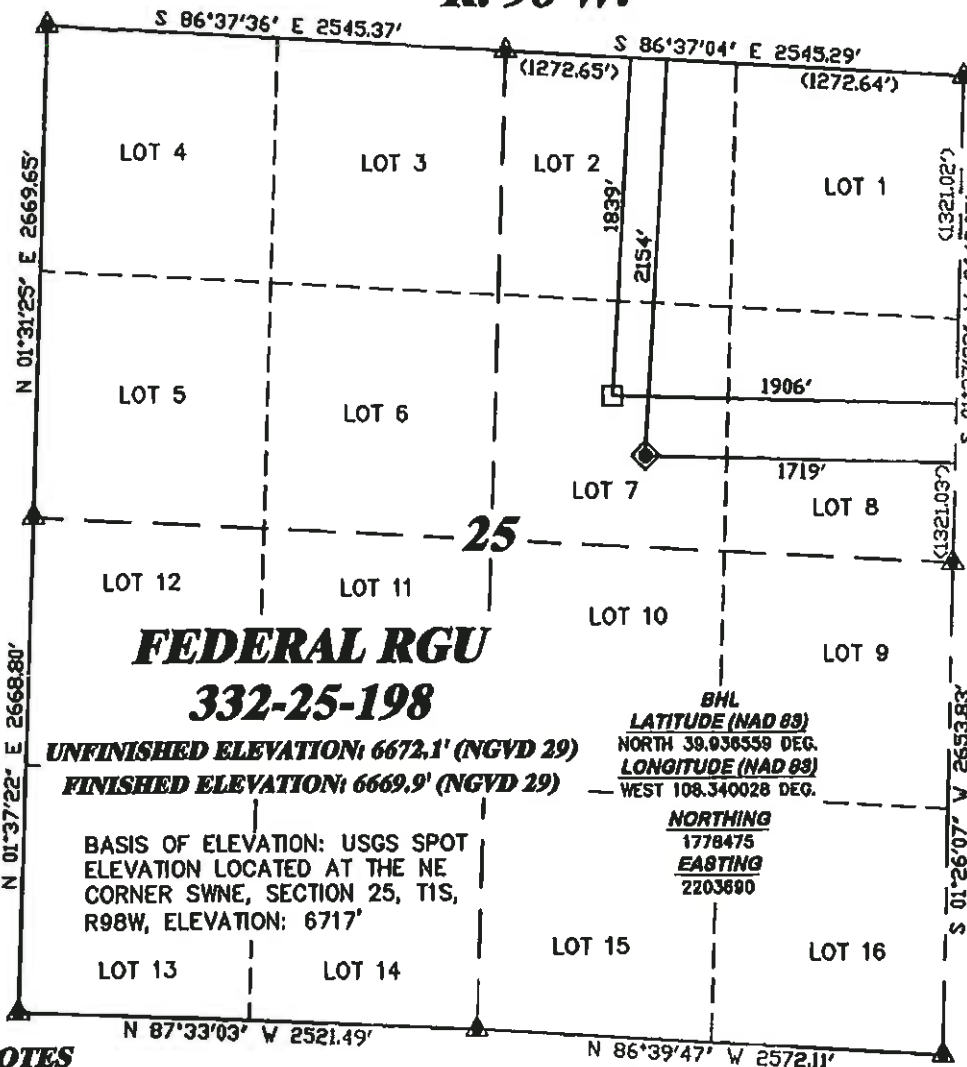
SCALE 1" = 1000'

T. 1 S.

LATITUDE (NAD 83)
NORTH 39.935678 DEG.
LONGITUDE (NAD 83)
WEST 108.339351 DEG.

NORTHING (NAD 83)
1778149.36
EASTING (NAD 83)
2203869.12

BASIS OF BEARING/DATUM
SPCS CO NORTH NAD 27
BASED ON NGS TRIANGULATION
STATION "BINER"



UNFINISHED ELEVATION: 6672.1' (NGVD 29)
FINISHED ELEVATION: 6669.9' (NGVD 29)

BASIS OF ELEVATION: USGS SPOT
ELEVATION LOCATED AT THE NE
CORNER SWNE, SECTION 25, T1S,
R98W, ELEVATION: 6717'

BHL
LATITUDE (NAD 83)
NORTH 39.936559 DEG.
LONGITUDE (NAD 83)
WEST 108.340028 DEG.

NORTHING
1778475
EASTING
2203690

NOTES

GPS OPERATOR MARK BESSIE
OBSERVED A PDOP OF 2.4.
ALL GPS OBSERVATIONS ARE IN
COMPLIANCE WITH COGCC RULE No.215.



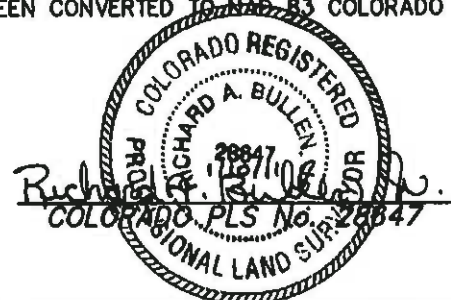
SURVEYOR'S STATEMENT

I, RICHARD A. BULLEN JR., AN EMPLOYEE AND AGENT ON BEHALF OF D.R. GRIFFIN & ASSOCIATES, INC. STATE THE PLAT HEREON IS A CORRECT REPRESENTATION OF A SURVEY MADE UNDER MY SUPERVISION ON OCTOBER 2, 2008 OF THE SHOWN FEDERAL RGU 332-25-198 AS STAKED ON THE GROUND. FIELD SURVEY DATUM IS NAD 27 COLORADO NORTH. VALUES HAVE BEEN CONVERTED TO NAD 83 COLORADO CENTRAL (X,Y) FOR PURPOSES OF THIS PLAT.

LEGEND

- ◆ WELL LOCATION
- BOTTOM HOLE LOC. (APPROX)
- FOUND MONUMENT
- ▲ PREVIOUSLY FOUND MONUMENT

RGU 32-25-198 PAD



**PLAT OF DRILLING LOCATION
FOR
WILLIAMS PRODUCTION RMT COMPANY**

**2154' F/NL & 1719' F/EL, SWNE, SECTION 25,
T. 1 S., R. 98 W., 6th P.M.
RIO BLANCO COUNTY, COLORADO**



DRG RIFFIN & ASSOCIATES, INC.
1414 ELK ST., ROCK SPRINGS, WY 82801

(307) 388-5028

DRAWN: 1/30/09 - MMM
REVISED: 1/10/11 - DEH
MISC. REVISIONS

SCALE: 1" = 1000'
DRG JOB No. 14848
PLAT 1