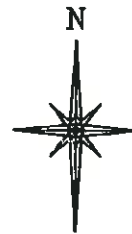


R. 98 W.



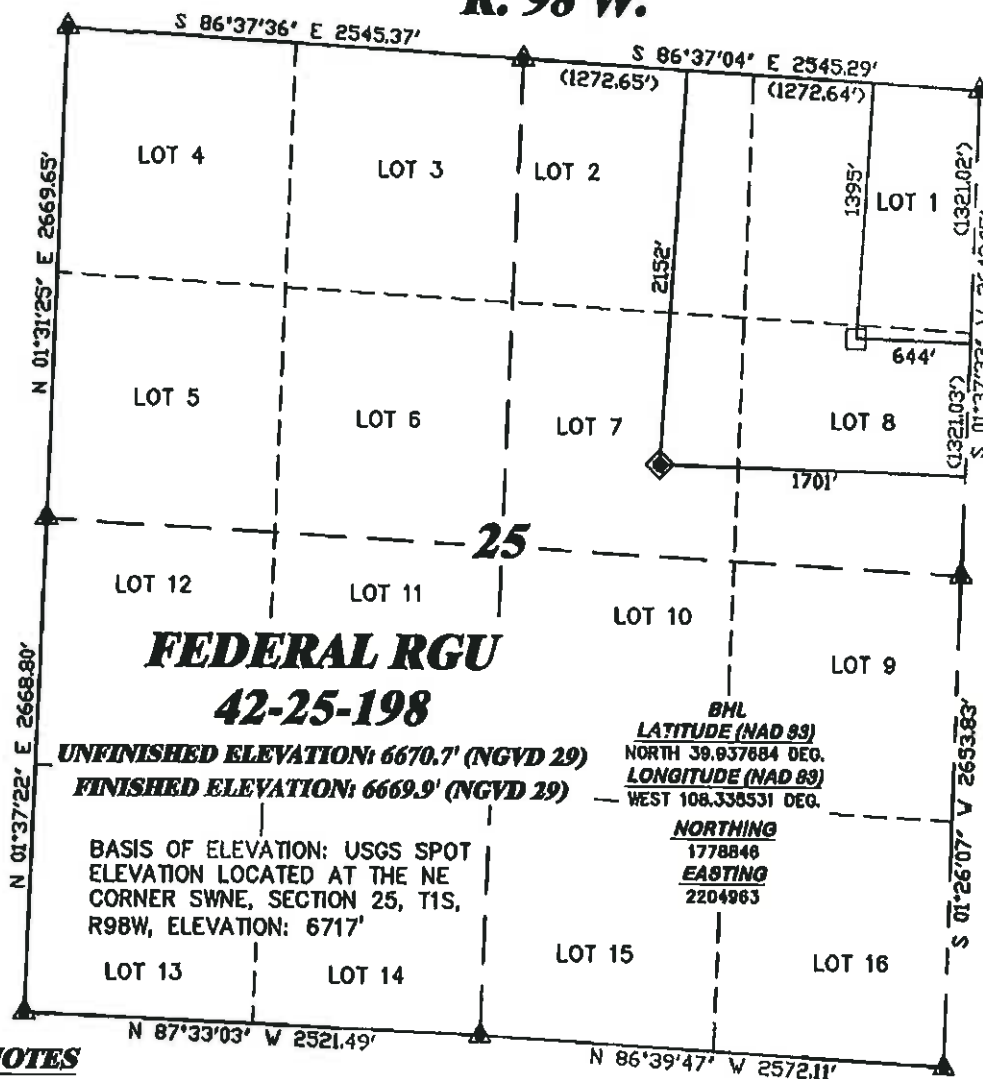
SCALE 1" = 1000'

T. 1 S.

LATITUDE (NAD 83)
NORTH 39.935681 DEG.
LONGITUDE (NAD 83)
WEST 108.339287 DEG.

NORTHING (NAD 83)
1778149.82
EASTING (NAD 83)
2203887.14

BASIS OF BEARING/DATUM
SPCS CO NORTH NAD 27
BASED ON NGS TRIANGULATION
STATION "BINER"



NOTES

GPS OPERATOR MARK BESSIE
OBSERVED A POOP OF 2.4.
ALL GPS OBSERVATIONS ARE IN
COMPLIANCE WITH COGCC RULE No.216.



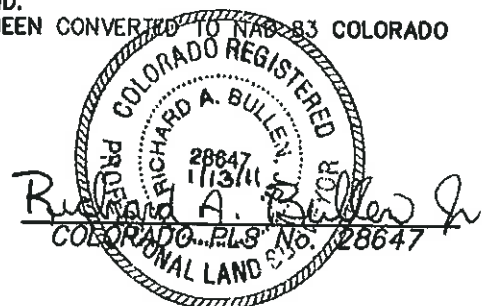
SURVEYOR'S STATEMENT

I, RICHARD A. BULLEN JR., AN EMPLOYEE AND AGENT ON BEHALF OF D.R. GRIFFIN & ASSOCIATES, INC. STATE THE PLAT HEREON IS A CORRECT REPRESENTATION OF A SURVEY MADE UNDER MY SUPERVISION ON OCTOBER 2, 2008 OF THE SHOWN FEDERAL RGU 42-25-198 AS STAKED ON THE GROUND. FIELD SURVEY DATUM IS NAD 27 COLORADO NORTH. VALUES HAVE BEEN CONVERTED TO NAD 83 COLORADO CENTRAL (X,Y) FOR PURPOSES OF THIS PLAT.

LEGEND

- ◆ WELL LOCATION
- BOTTOM HOLE LOC. (APPROX)
- FOUND MONUMENT
- ▲ PREVIOUSLY FOUND MONUMENT

RGU 32-25-198 PAD



DR. GRIFFIN & ASSOCIATES, INC.
1414 ELK ST., ROCK SPRINGS, WY 82901

(307) 362-6029

**PLAT OF DRILLING LOCATION
FOR
WILLIAMS PRODUCTION RMT COMPANY**
2152' F/NL & 1701' F/EL, SWNE, SECTION 25,
T. 1 S., R. 98 W., 6th P.M.
RIO BLANCO COUNTY, COLORADO

DRAWN: 1/30/09 - MMM

SCALE: 1" = 1000'

REVISED: 1/13/11 - DEH

DRG JOB No. 14646

MISC. REVISIONS

PLAT 1