

R. 98 W.



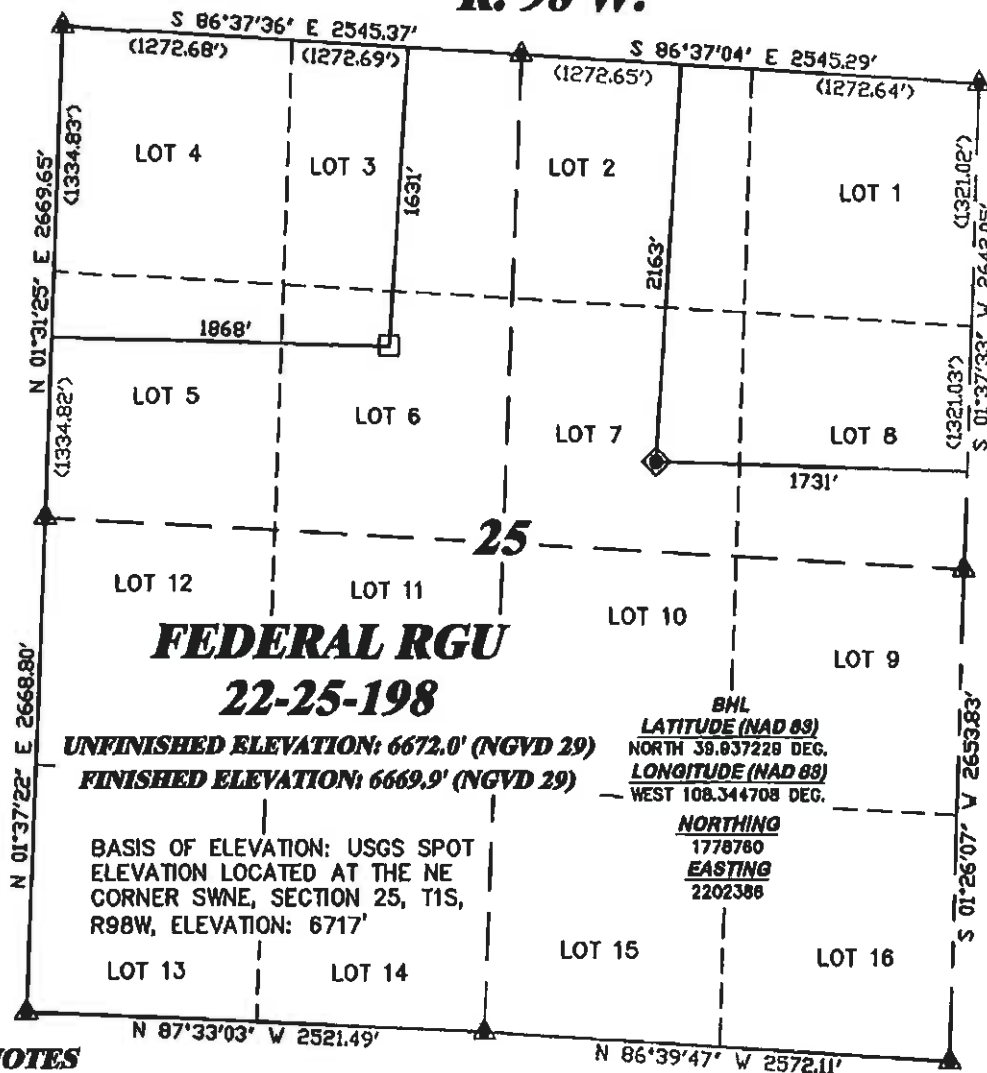
SCALE 1" = 1000'

T. 1 S.

LATITUDE (NAD 83)
NORTH 39.935654 DEG.
LONGITUDE (NAD 83)
WEST 108.339394 DEG.

NORTHING (NAD 83)
1778140.72
EASTING (NAD 83)
2203856.85

BASIS OF BEARING/DATUM
SPCS CO NORTH NAD 27
BASED ON NGS TRIANGULATION
STATION "BINER"



NOTES

GPS OPERATOR MARK BESSIE
OBSERVED A PDOP OF 2.4.
ALL GPS OBSERVATIONS ARE IN
COMPLIANCE WITH COGCC RULE No.215.



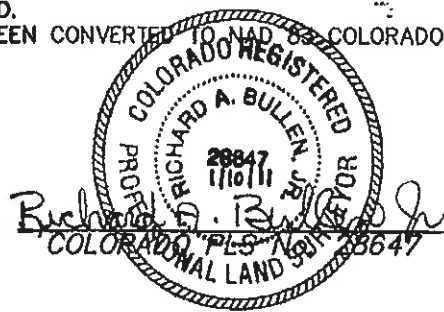
SURVEYOR'S STATEMENT

I, RICHARD A. BULLEN JR., AN EMPLOYEE AND AGENT ON BEHALF OF D.R. GRIFFIN & ASSOCIATES, INC. STATE THE PLAT HEREON IS A CORRECT REPRESENTATION OF A SURVEY MADE UNDER MY SUPERVISION ON OCTOBER 2, 2008 OF THE SHOWN FEDERAL RGU 22-25-198 AS STAKED ON THE GROUND. FIELD SURVEY DATUM IS NAD 27 COLORADO NORTH. VALUES HAVE BEEN CONVERTED TO NAD 83 COLORADO CENTRAL (X,Y) FOR PURPOSES OF THIS PLAT.

LEGEND

- ◆ WELL LOCATION
- BOTTOM HOLE LOC. (APPROX)
- FOUND MONUMENT
- ▲ PREVIOUSLY FOUND MONUMENT

RGU 32-26-198 PAD



DG RIFFIN & ASSOCIATES, INC. <small>(307) 362-5028 1414 ELK ST., ROCK SPRINGS, WY 82901</small>	
DRAWN: 1/30/09 - MMM	SCALE: 1" = 1000'
REVISED: 1/10/11 - DEH	DRG JOB No. 14548
MISC. REVISIONS	PLAT 1

**PLAT OF DRILLING LOCATION
FOR
WILLIAMS PRODUCTION RMT COMPANY**
 2163' F/NL & 1731' F/EL, SWNE, SECTION 25,
 T. 1 S., R. 98 W., 6th P.M.
 RIO BLANCO COUNTY, COLORADO