

LOCATION DRAWING

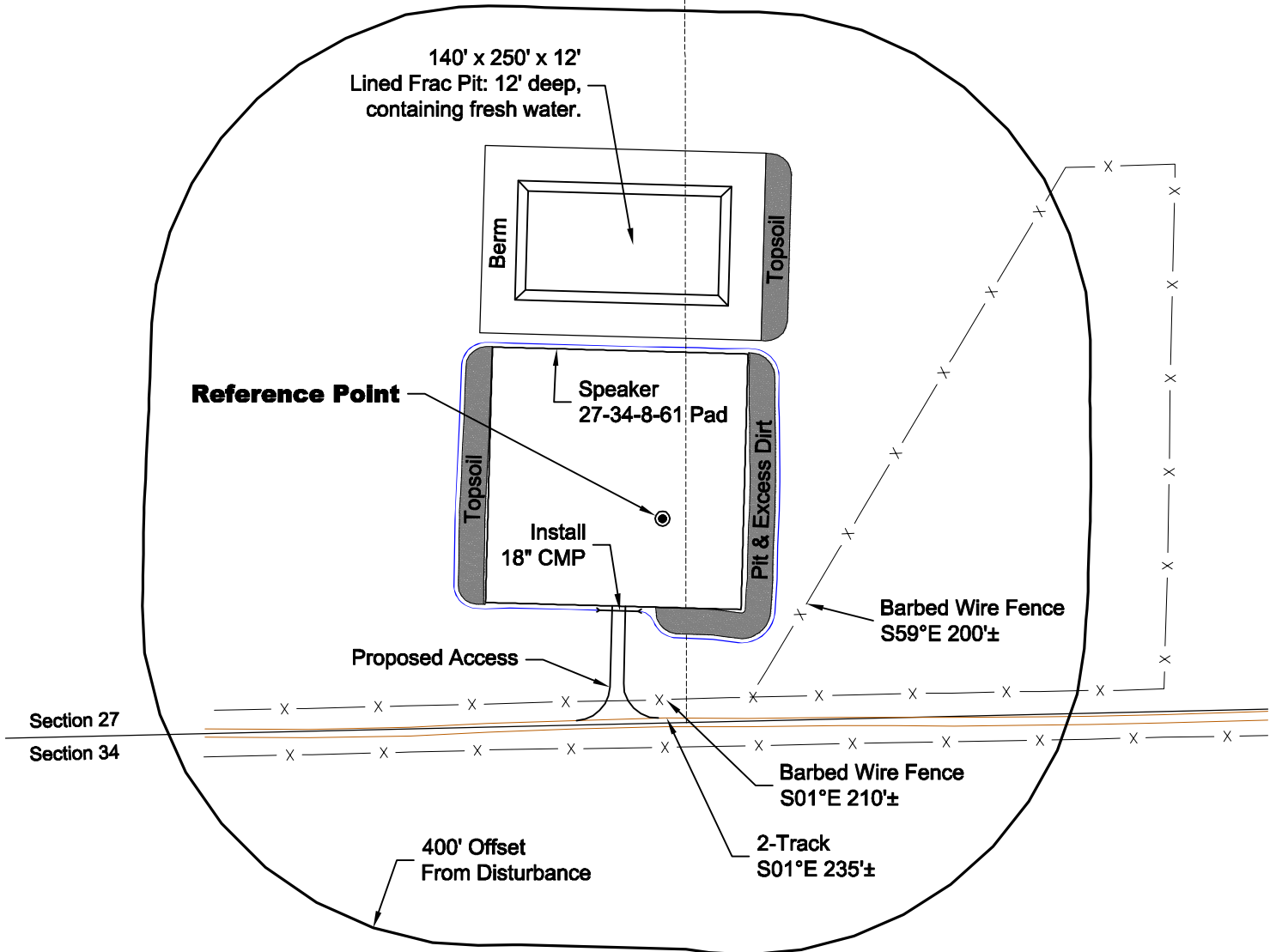
VEGETATION:
DRY LAND PASTURE

SURFACE USE:
GRAZING

REFERENCE POINT

LATITUDE: 40.62620
LONGITUDE: -104.18753
FOOTAGE: 240 FSL 1349 FEL
GROUND ELEVATION: 5024.5
PDOP: 2.4 DATE: 2/18/2011
INSTRUMENT OPERATOR: DAVE MURREY

SE1/4 SE1/4
SW1/4 SE1/4



NOTE:

ALL PRODUCTION FACILITIES WILL BE ON PAD.

DISTURBANCE ACREAGE:
3.0± DRILLING OPERATIONS
2.0± FRAC PIT
1.0± INTERIM RECLAIM

2/25/11



0 200 400

Graphic Scale in Feet
1 inch = 200 feet

GEO SURV

LAND SURVEYING AND MAPPING
LAFAYETTE - WINTER PARK
Ph 303 666 0379 Fx 303 665 6320

CARRIZO OIL & GAS, INC
SPEAKER 27-34-8-61 PAD

SW1/4 SE1/4 SEC. 27 T8N R61W
6th PM WELD COUNTY COLORADO