

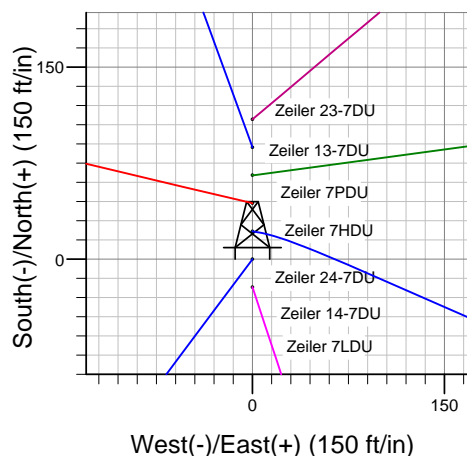
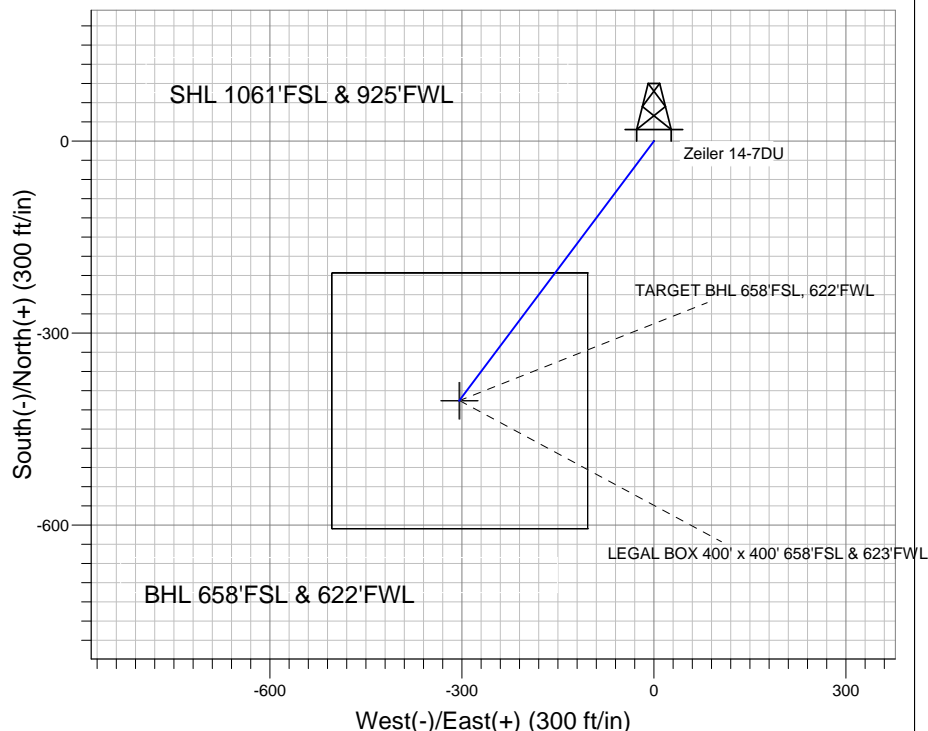
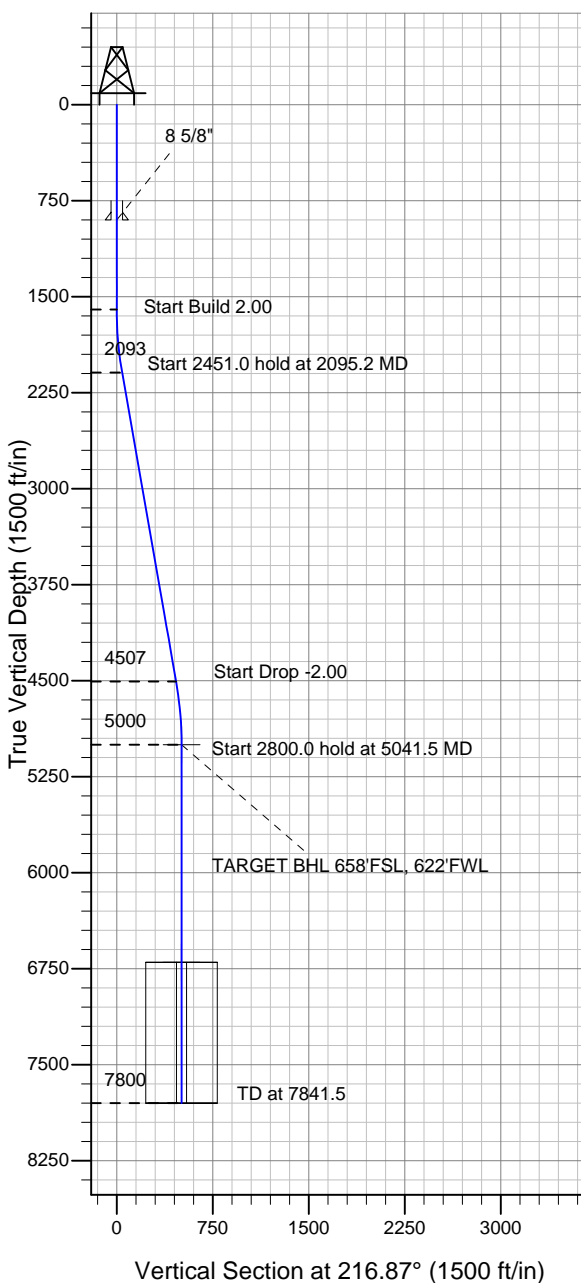
# ENSIGN

## Directional

### Well Name: Zeiler 14-7DU

Surface Location: Zeiler 23-7DU Pad Sec.7-T5N-R67W  
 North American Datum 1983 US State Plane 1983 Colorado Northern Zone  
 Ground Elevation: 4960.0  
 +N/-S +E/-W Northing Easting Latitude Longitude Slot  
 0.0 0.0 1392646.29 3155607.90 40° 24' 35.532 N 104° 56' 28.320 W  
 Original Well Elev WELL @ 4973.0ft (Original Well Elev)

### PETROLEUM DEVELOPMENT CORP Weld County CO



Zeiler 23-7DU Pad Sec.7-T5N-R67W  
 Zeiler 14-7DU  
 Plan #1 (2-08-11)  
 15:33, February 14 2011



Azimuths to True North  
 Magnetic North: 8.96°  
 Magnetic Field  
 Strength: 53173.4snT  
 Dip Angle: 67.05°  
 Date: 2/14/2011  
 Model: IGRF200510

### WELLBORE TARGET DETAILS (LAT/LONG)

Name	TVD	+N/-S	+E/-W	Latitude	Longitude	Shape
TARGET BHL 658'FSL, 622'FWL	5000.0	-405.6	-304.2	40° 24' 31.524 N	104° 56' 32.252 W	Point
LEGAL BOX 400' x 400' 658'FSL & 623'FWL	6700.0	-405.6	-303.2	40° 24' 31.524 N	104° 56' 32.239 W	Rectangle (Sides: L400.0 W400.0)

### SECTION DETAILS

Sec	MD	Inc	Azi	TVD	+N/-S	+E/-W	DLeg	TFace	VSec	Target
1	0.0	0.00	0.00	0.0	0.0	0.0	0.00	0.00	0.0	
2	1600.0	0.00	0.00	1600.0	0.0	0.0	0.00	0.00	0.0	
3	2095.2	9.90	216.87	2092.8	-34.2	-25.6	2.00	216.87	42.7	
4	4546.2	9.90	216.87	4507.2	-371.4	-278.6	0.00	0.00	464.3	
5	5041.5	0.00	0.00	5000.0	-405.6	-304.2	2.00	180.00	507.0	TARGET BHL 658'FSL, 622'FWL
6	7841.5	0.00	0.00	7800.0	-405.6	-304.2	0.00	0.00	507.0	