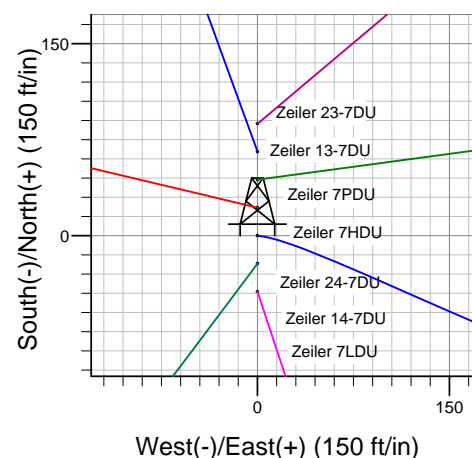
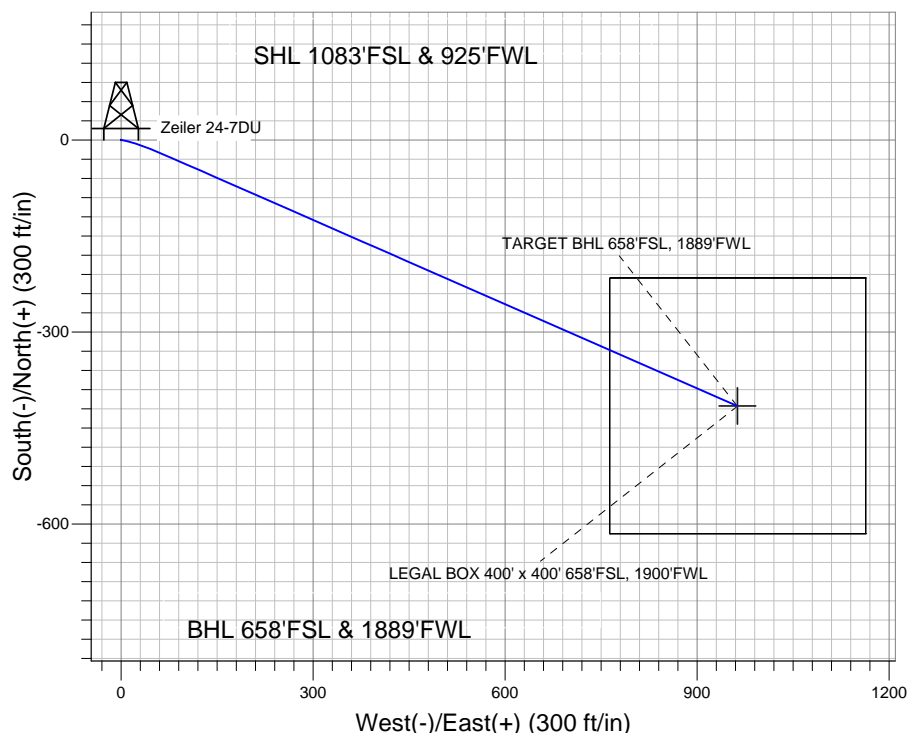
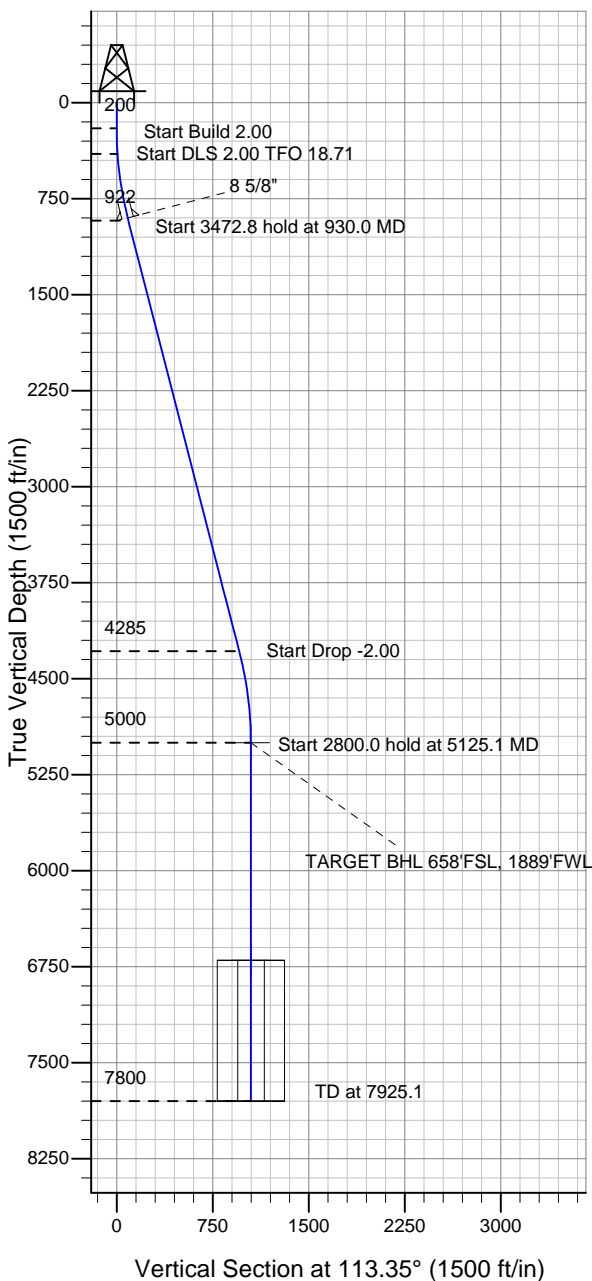


Well Name: Zeiler 24-7DU

Surface Location: Zeiler 23-7DU Pad Sec.7-T5N-R67W
 North American Datum 1983 US State Plane 1983 Colorado Northern Zone
 Ground Elevation: 4960.0
 +N/-S +E/-W Northing Easting Latitude Longitude Slot
 0.0 0.0 1392668.14 3155607.76 40° 24' 35.748 N 104° 56' 28.320 W
 Original Well Elev WELL @ 4973.0ft (Original Well Elev)

PETROLEUM DEVELOPMENT CORP Weld County CO



Zeiler 23-7DU Pad Sec.7-T5N-R67W
 Zeiler 24-7DU
 Plan #1 (2-08-11)
 15:19, February 14 2011



Azimuths to True North
 Magnetic North: 8.96°
 Magnetic Field
 Strength: 53173.4snT
 Dip Angle: 67.05°
 Date: 2/14/2011
 Model: IGRF200510

WELLBORE TARGET DETAILS (LAT/LONG)

Name	TVD	+N/-S	+E/-W	Latitude	Longitude	Shape
TARGET BHL 658'FSL, 1889'FWL	5000.0	-415.4	962.2	40° 24' 31.643 N	104° 56' 15.882 W	Point
LEGAL BOX 400' x 400' 658'FSL, 1900'FWL	6700.0	-415.4	963.2	40° 24' 31.643 N	104° 56' 15.869 W	Rectangle (Sides: L400.0 W400.0)

SECTION DETAILS

Sec	MD	Inc	Azi	TVD	+N/-S	+E/-W	DLeg	TFace	VSec	Target
1	0.0	0.00	0.00	0.0	0.0	0.0	0.00	0.00	0.0	
2	200.0	0.00	0.00	200.0	0.0	0.0	0.00	0.00	0.0	
3	400.0	4.00	100.00	399.8	-1.2	6.9	2.00	100.00	6.8	
4	930.0	14.45	113.68	922.3	-31.1	85.8	2.00	18.71	91.1	
5	4402.8	14.45	113.68	4285.4	-379.0	879.2	0.00	0.00	957.4	
6	5125.1	0.00	0.00	5000.0	-415.4	962.2	2.00	180.00	1048.0	TARGET BHL 658'FSL, 1889'FWL
7	7925.1	0.00	0.00	7800.0	-415.4	962.2	0.00	0.00	1048.0	