

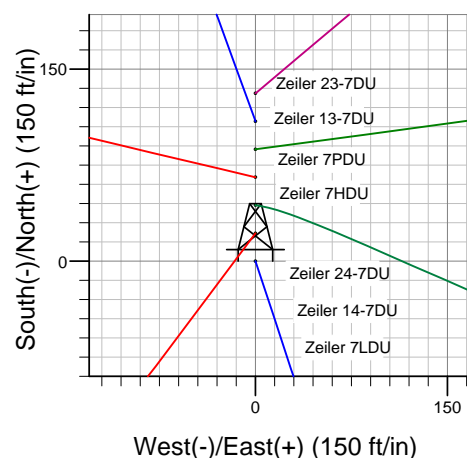
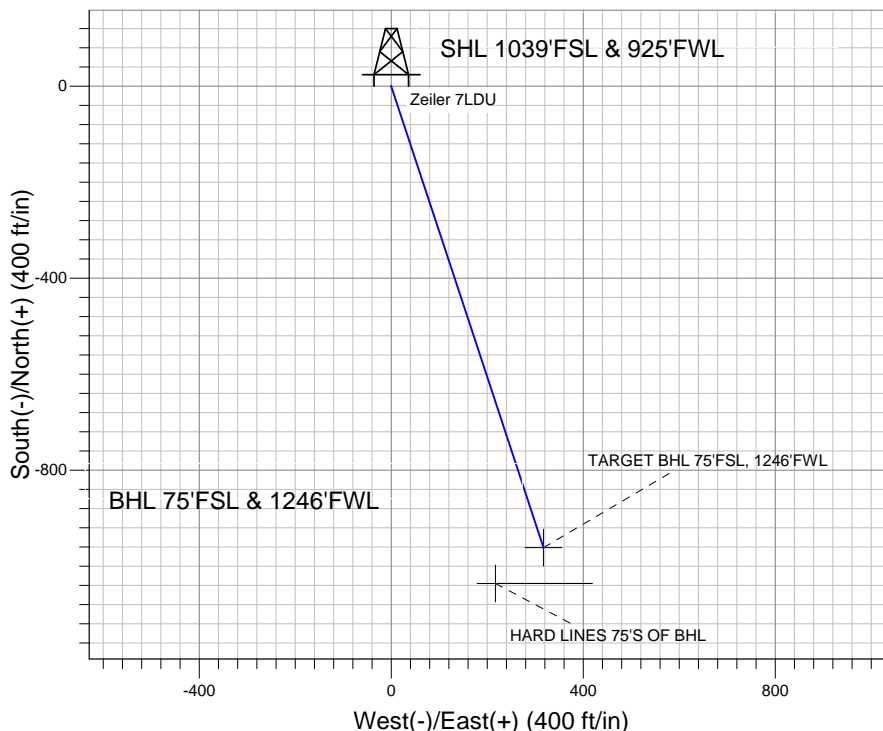
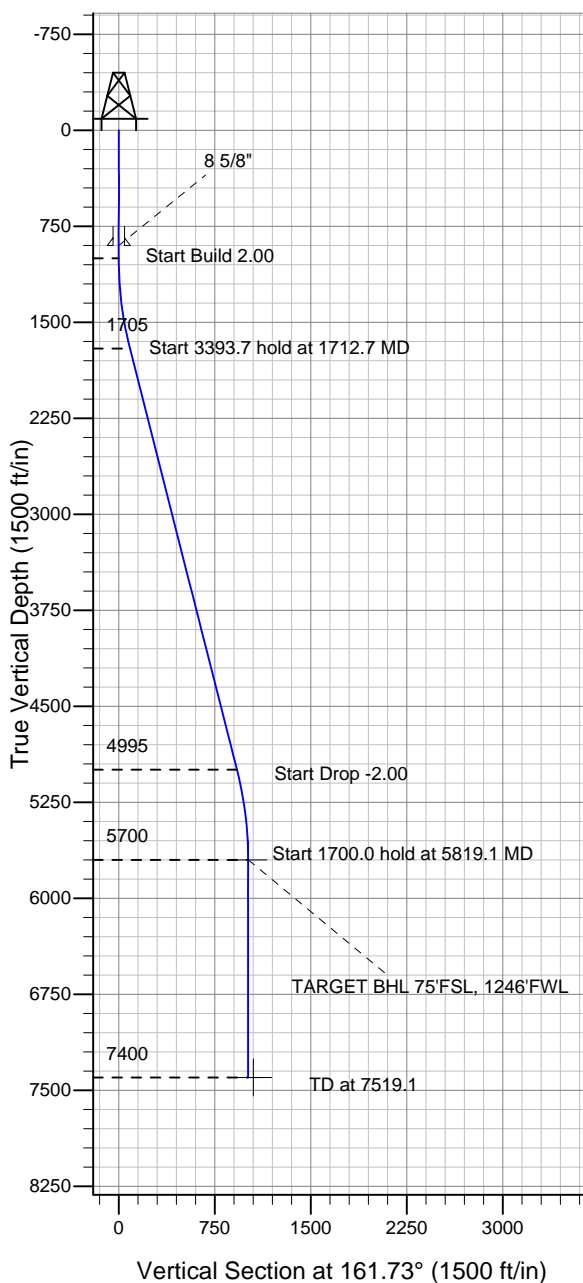
# ENSIGN

## Directional

### Well Name: Zeiler 7LDU

Surface Location: Zeiler 23-7DU Pad Sec.7-T5N-R67W  
 North American Datum 1983 US State Plane 1983 Colorado Northern Zone  
 Ground Elevation: 4960.0  
 +N/-S +E/-W Northing Easting Latitude Longitude Slot  
 0.0 0.0 1392624.43 3155608.04 40° 24' 35.316 N 104° 56' 28.320 W  
 Original Well Elev WELL @ 4973.0ft (Original Well Elev)

### PETROLEUM DEVELOPMENT CORP Weld County CO



Zeiler 23-7DU Pad Sec.7-T5N-R67W  
 Zeiler 7LDU  
 Plan #1 (2-08-11)  
 15:48, February 14 2011



Azimuths to True North  
 Magnetic North: 8.96°  
 Magnetic Field  
 Strength: 53173.3snT  
 Dip Angle: 67.05°  
 Date: 2/14/2011  
 Model: IGRF200510

### WELLBORE TARGET DETAILS (LAT/LONG)

Name	TVD	+N/-S	+E/-W	Latitude	Longitude	Shape
TARGET BHL 75'FSL, 1246'FWL	5700.0	-961.0	317.3	40° 24' 25.820 N	104° 56' 24.219 W	Point
HARD LINES 75'S OF BHL	7400.0	-1036.0	217.3	40° 24' 25.078 N	104° 56' 25.511 W	Polygon

### SECTION DETAILS

Sec	MD	Inc	Azi	TVD	+N/-S	+E/-W	DLeg	TFace	VSec	Target
1	0.0	0.00	0.00	0.0	0.0	0.0	0.00	0.00	0.0	
2	1000.0	0.00	0.00	1000.0	0.0	0.0	0.00	0.00	0.0	
3	1712.7	14.25	161.73	1705.4	-83.8	27.6	2.00	161.73	88.2	
4	5106.4	14.25	161.73	4994.6	-877.2	289.6	0.00	0.00	923.8	
5	5819.1	0.00	0.00	5700.0	-961.0	317.3	2.00	180.00	1012.0	TARGET BHL 75'FSL, 1246'FWL
6	7519.1	0.00	0.00	7400.0	-961.0	317.3	0.00	0.00	1012.0	