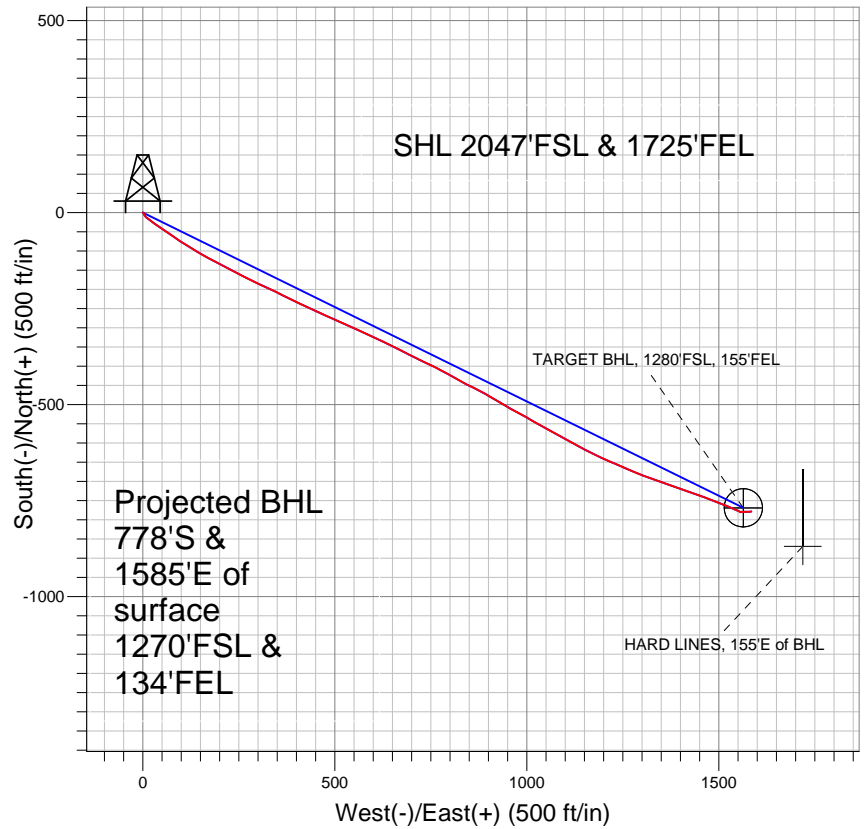
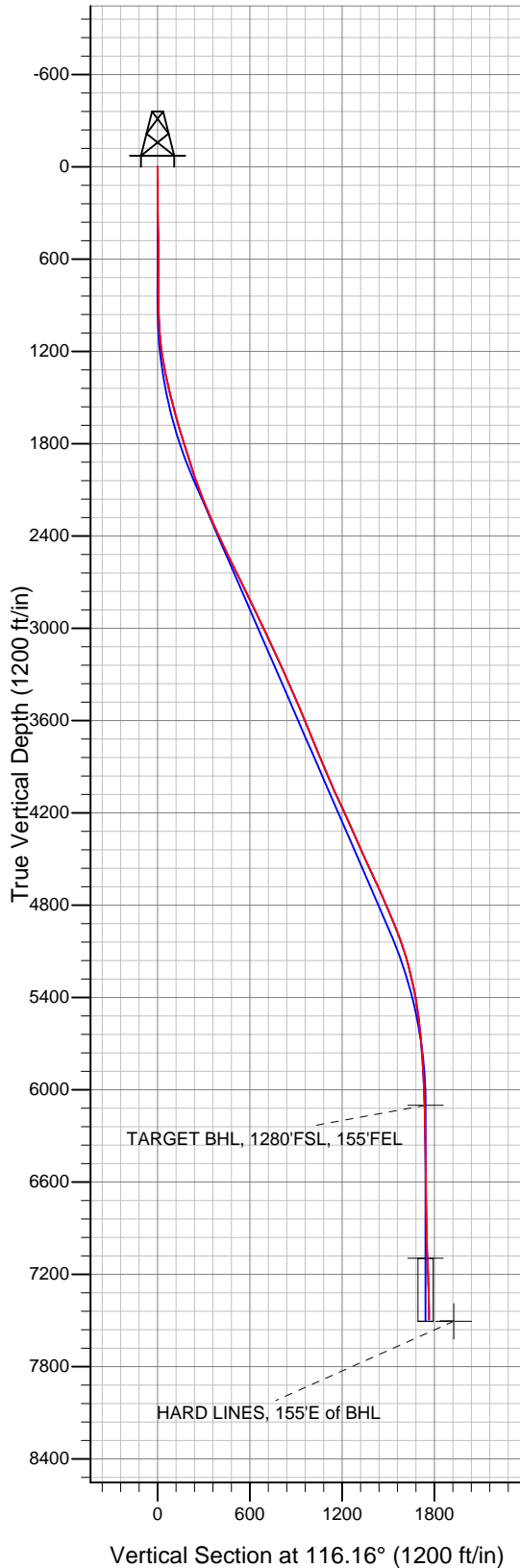


Anadarko, Weld County CO



LEGEND

- Barron 39-18, Wellbore #1, Plan #1 (10-12-10) V0
- Wellbore #1
- Survey #1

Final Survey Plot

Projected Final Survey -
7825'MD & 7492'TVD @ 1766' VS
0.8 deg Inc 79.5 deg AZ

Project: SEC.18-T3N-R66W
Site: Barron Federal 10-18 Pad Sec.18-T3N-R66W
Well: Barron 39-18
Plan: Wellbore #1



Directional

Anadarko, Weld County CO

SEC.18-T3N-R66W

Barron Federal 10-18 Pad Sec.18-T3N-R66W

Barron 39-18

Wellbore #1

Survey: Survey #1

Standard Survey Report

29 October, 2010

Company:	Anadarko, Weld County CO	Local Co-ordinate Reference:	Well Barron 39-18
Project:	SEC.18-T3N-R66W	TVD Reference:	WELL @ 4841.0ft (Original Well Elev)
Site:	Barron Federal 10-18 Pad Sec.18-T3N-R66W	MD Reference:	WELL @ 4841.0ft (Original Well Elev)
Well:	Barron 39-18	North Reference:	True
Wellbore:	Wellbore #1	Survey Calculation Method:	Minimum Curvature
Design:	Wellbore #1	Database:	Landmark

Project	SEC.18-T3N-R66W, Weld County, Colorado		
Map System:	US State Plane 1983	System Datum:	Mean Sea Level
Geo Datum:	North American Datum 1983		Using Well Reference Point
Map Zone:	Colorado Northern Zone		Using geodetic scale factor

Site	Barron Federal 10-18 Pad Sec.18-T3N-R66W		
Site Position:		Northing:	1,324,804.29 ft
From:	Lat/Long	Easting:	3,190,683.90 ft
Position Uncertainty:	0.0 ft	Slot Radius:	"
		Latitude:	40° 13' 22.692 N
		Longitude:	104° 49' 1.632 W
		Grid Convergence:	0.44 °

Well	Barron 39-18		
Well Position	+N-S	0.0 ft	Northing: 1,324,804.66 ft
	+E-W	0.0 ft	Easting: 3,190,734.17 ft
Position Uncertainty		0.0 ft	Wellhead Elevation: ft
			Latitude: 40° 13' 22.692 N
			Longitude: 104° 49' 0.984 W
			Ground Level: 4,827.0 ft

Wellbore	Wellbore #1				
Magnetics	Model Name	Sample Date	Declination (°)	Dip Angle (°)	Field Strength (nT)
	IGRF2010	10/26/2010	8.96	66.92	53,100

Design	Wellbore #1				
Audit Notes:					
Version:	1.0	Phase:	ACTUAL	Tie On Depth:	0.0
Vertical Section:	Depth From (TVD) (ft)	+N-S (ft)	+E-W (ft)	Direction (°)	
	0.0	0.0	0.0	116.16	

Survey Program	Date	10/29/2010			
From (ft)	To (ft)	Survey (Wellbore)	Tool Name	Description	
97.0	7,825.0	Survey #1 (Wellbore #1)	MWD	MWD - Standard	

Survey										
Measured Depth (ft)	Inclination (°)	Azimuth (°)	Vertical Depth (ft)	+N-S (ft)	+E-W (ft)	Vertical Section (ft)	Dogleg Rate (°/100ft)	Build Rate (°/100ft)	Turn Rate (°/100ft)	
0.0	0.00	0.00	0.0	0.0	0.0	0.0	0.00	0.00	0.00	
97.0	0.60	112.00	97.0	-0.2	0.5	0.5	0.62	0.62	0.00	
187.0	0.20	113.10	187.0	-0.4	1.1	1.1	0.44	-0.44	1.22	
277.0	0.50	146.70	277.0	-0.8	1.4	1.6	0.39	0.33	37.33	
368.0	0.90	115.90	368.0	-1.5	2.3	2.7	0.59	0.44	-33.85	
460.0	0.60	129.60	460.0	-2.1	3.3	3.9	0.38	-0.33	14.89	
552.0	0.50	115.60	552.0	-2.6	4.0	4.7	0.18	-0.11	-15.22	
645.0	0.60	137.70	645.0	-3.1	4.7	5.6	0.25	0.11	23.76	
737.0	0.60	168.70	737.0	-3.9	5.1	6.3	0.35	0.00	33.70	
791.0	0.60	240.10	791.0	-4.3	5.0	6.4	1.30	0.00	132.22	
875.0	1.00	211.30	875.0	-5.2	4.2	6.0	0.66	0.48	-34.29	
970.0	2.10	146.20	969.9	-7.3	4.7	7.5	2.01	1.16	-68.53	
1,065.0	4.50	135.40	1,064.8	-11.4	8.3	12.5	2.60	2.53	-11.37	

Company:	Anadarko, Weld County CO	Local Co-ordinate Reference:	Well Barron 39-18
Project:	SEC.18-T3N-R66W	TVD Reference:	WELL @ 4841.0ft (Original Well Elev)
Site:	Barron Federal 10-18 Pad Sec.18-T3N-R66W	MD Reference:	WELL @ 4841.0ft (Original Well Elev)
Well:	Barron 39-18	North Reference:	True
Wellbore:	Wellbore #1	Survey Calculation Method:	Minimum Curvature
Design:	Wellbore #1	Database:	Landmark

Survey

Measured Depth (ft)	Inclination (°)	Azimuth (°)	Vertical Depth (ft)	+N/-S (ft)	+E/-W (ft)	Vertical Section (ft)	Dogleg Rate (°/100ft)	Build Rate (°/100ft)	Turn Rate (°/100ft)
1,160.0	7.30	127.10	1,159.3	-17.7	15.7	22.0	3.07	2.95	-8.74
1,255.0	9.00	124.50	1,253.3	-25.6	26.7	35.2	1.83	1.79	-2.74
1,351.0	12.00	125.30	1,347.7	-35.6	41.0	52.5	3.13	3.13	0.83
1,446.0	13.30	123.90	1,440.4	-47.4	58.1	73.1	1.41	1.37	-1.47
1,541.0	14.50	125.50	1,532.6	-60.4	76.9	95.7	1.33	1.26	1.68
1,636.0	15.40	122.60	1,624.4	-74.1	97.2	119.9	1.23	0.95	-3.05
1,731.0	17.10	123.10	1,715.6	-88.5	119.5	146.3	1.80	1.79	0.53
1,826.0	17.50	119.60	1,806.3	-103.2	143.7	174.5	1.17	0.42	-3.68
1,922.0	17.50	119.10	1,897.8	-117.4	168.8	203.3	0.16	0.00	-0.52
2,017.0	18.50	116.90	1,988.2	-131.1	194.7	232.6	1.27	1.05	-2.32
2,112.0	20.10	117.20	2,077.8	-145.4	222.7	264.0	1.69	1.68	0.32
2,207.0	22.50	118.20	2,166.3	-161.5	253.3	298.5	2.56	2.53	1.05
2,302.0	22.90	115.80	2,254.0	-178.1	285.9	335.2	1.06	0.42	-2.53
2,397.0	23.60	113.90	2,341.3	-193.9	319.9	372.6	1.08	0.74	-2.00
2,492.0	25.30	117.10	2,427.7	-210.8	355.4	411.9	2.27	1.79	3.37
2,588.0	25.70	115.50	2,514.4	-229.1	392.5	453.3	0.83	0.42	-1.67
2,683.0	26.30	114.10	2,599.8	-246.6	430.3	494.9	0.90	0.63	-1.47
2,778.0	26.50	114.50	2,684.9	-264.0	468.8	537.1	0.28	0.21	0.42
2,873.0	26.10	115.40	2,770.0	-281.7	506.9	579.2	0.59	-0.42	0.95
2,968.0	25.80	114.10	2,855.5	-299.1	544.7	620.8	0.68	-0.32	-1.37
3,064.0	24.60	113.20	2,942.3	-315.5	582.1	661.6	1.31	-1.25	-0.94
3,159.0	25.40	116.00	3,028.4	-332.3	618.6	701.7	1.50	0.84	2.95
3,254.0	25.70	116.50	3,114.1	-350.4	655.3	742.7	0.39	0.32	0.53
3,349.0	25.10	117.40	3,200.0	-368.8	691.7	783.4	0.75	-0.63	0.95
3,444.0	24.10	115.20	3,286.3	-386.4	727.1	823.0	1.43	-1.05	-2.32
3,539.0	23.30	115.80	3,373.3	-402.8	761.6	861.1	0.88	-0.84	0.63
3,634.0	22.90	120.40	3,460.7	-420.3	794.4	898.4	1.95	-0.42	4.84
3,729.0	23.00	118.40	3,548.2	-438.5	826.7	935.4	0.83	0.11	-2.11
3,825.0	22.90	115.70	3,636.6	-455.5	860.0	972.8	1.10	-0.10	-2.81
3,920.0	22.40	118.90	3,724.3	-472.3	892.5	1,009.3	1.40	-0.53	3.37
4,015.0	22.50	121.60	3,812.1	-490.6	923.9	1,045.5	1.09	0.11	2.84
4,110.0	23.30	119.20	3,899.6	-509.3	955.7	1,082.4	1.29	0.84	-2.53
4,205.0	23.00	118.30	3,986.9	-527.2	988.5	1,119.7	0.49	-0.32	-0.95
4,300.0	25.20	120.10	4,073.7	-546.2	1,022.3	1,158.4	2.44	2.32	1.89
4,395.0	24.30	118.70	4,159.9	-565.7	1,057.0	1,198.1	1.13	-0.95	-1.47
4,491.0	23.60	118.40	4,247.7	-584.3	1,091.2	1,237.0	0.74	-0.73	-0.31
4,586.0	25.20	119.90	4,334.2	-603.5	1,125.5	1,276.2	1.81	1.68	1.58
4,681.0	23.50	116.50	4,420.7	-622.0	1,160.0	1,315.4	2.32	-1.79	-3.58
4,776.0	24.10	114.00	4,507.6	-638.3	1,194.6	1,353.7	1.24	0.63	-2.63
4,871.0	25.50	113.40	4,593.9	-654.4	1,231.1	1,393.5	1.50	1.47	-0.63
4,966.0	24.10	113.90	4,680.1	-670.3	1,267.6	1,433.3	1.49	-1.47	0.53
5,061.0	24.70	110.70	4,766.6	-685.2	1,303.9	1,472.4	1.53	0.63	-3.37
5,156.0	22.90	109.80	4,853.6	-698.5	1,339.9	1,510.6	1.93	-1.89	-0.95
5,251.0	21.70	108.60	4,941.5	-710.3	1,373.9	1,546.4	1.35	-1.26	-1.26
5,346.0	20.40	108.50	5,030.1	-721.2	1,406.3	1,580.2	1.37	-1.37	-0.11
5,441.0	17.10	108.60	5,120.1	-730.9	1,435.2	1,610.4	3.47	-3.47	0.11
5,537.0	14.20	110.70	5,212.5	-739.6	1,459.6	1,636.2	3.08	-3.02	2.19
5,632.0	13.00	113.10	5,304.8	-747.9	1,480.3	1,658.4	1.40	-1.26	2.53
5,727.0	9.90	110.60	5,397.9	-755.0	1,497.8	1,677.2	3.30	-3.26	-2.63
5,822.0	8.00	115.10	5,491.8	-760.6	1,511.4	1,692.0	2.13	-2.00	4.74
5,917.0	6.30	109.20	5,586.0	-765.2	1,522.4	1,703.8	1.95	-1.79	-6.21
6,013.0	4.80	108.40	5,681.6	-768.2	1,531.1	1,713.0	1.56	-1.56	-0.83
6,108.0	4.10	111.60	5,776.3	-770.7	1,538.1	1,720.3	0.78	-0.74	3.37
6,203.0	3.60	121.00	5,871.1	-773.4	1,543.8	1,726.6	0.85	-0.53	9.89

Company:	Anadarko, Weld County CO	Local Co-ordinate Reference:	Well Barron 39-18
Project:	SEC.18-T3N-R66W	TVD Reference:	WELL @ 4841.0ft (Original Well Elev)
Site:	Barron Federal 10-18 Pad Sec.18-T3N-R66W	MD Reference:	WELL @ 4841.0ft (Original Well Elev)
Well:	Barron 39-18	North Reference:	True
Wellbore:	Wellbore #1	Survey Calculation Method:	Minimum Curvature
Design:	Wellbore #1	Database:	Landmark

Survey

Measured Depth (ft)	Inclination (°)	Azimuth (°)	Vertical Depth (ft)	+N/-S (ft)	+E/-W (ft)	Vertical Section (ft)	Dogleg Rate (°/100ft)	Build Rate (°/100ft)	Turn Rate (°/100ft)
6,298.0	2.60	111.60	5,965.9	-775.8	1,548.3	1,731.8	1.18	-1.05	-9.89
6,393.0	2.30	116.60	6,060.8	-777.4	1,552.1	1,735.8	0.39	-0.32	5.26
6,488.0	1.00	126.90	6,155.8	-778.8	1,554.4	1,738.5	1.40	-1.37	10.84
6,584.0	0.80	141.80	6,251.8	-779.8	1,555.5	1,740.0	0.32	-0.21	15.52
6,679.0	0.70	73.20	6,346.8	-780.2	1,556.5	1,741.0	0.89	-0.11	-72.21
6,774.0	1.00	57.30	6,441.8	-779.5	1,557.7	1,741.8	0.40	0.32	-16.74
6,869.0	1.20	83.80	6,536.8	-779.0	1,559.4	1,743.1	0.57	0.21	27.89
6,964.0	1.40	108.40	6,631.7	-779.2	1,561.5	1,745.1	0.62	0.21	25.89
7,059.0	0.80	51.80	6,726.7	-779.2	1,563.1	1,746.5	1.23	-0.63	-59.58
7,155.0	1.00	92.00	6,822.7	-778.8	1,564.5	1,747.6	0.67	0.21	41.88
7,250.0	1.50	86.70	6,917.7	-778.8	1,566.6	1,749.4	0.54	0.53	-5.58
7,345.0	1.90	88.80	7,012.6	-778.7	1,569.4	1,751.9	0.43	0.42	2.21
7,535.0	2.80	90.00	7,202.5	-778.6	1,577.2	1,758.9	0.47	0.47	0.63
7,630.0	1.70	91.80	7,297.4	-778.6	1,580.9	1,762.2	1.16	-1.16	1.89
7,774.0	0.80	79.50	7,441.4	-778.5	1,584.0	1,765.0	0.65	-0.63	-8.54
7,825.0	0.80	79.50	7,492.4	-778.4	1,584.7	1,765.6	0.00	0.00	0.00

Checked By: _____ Approved By: _____ Date: _____