

Stell Surveying Services, LLC

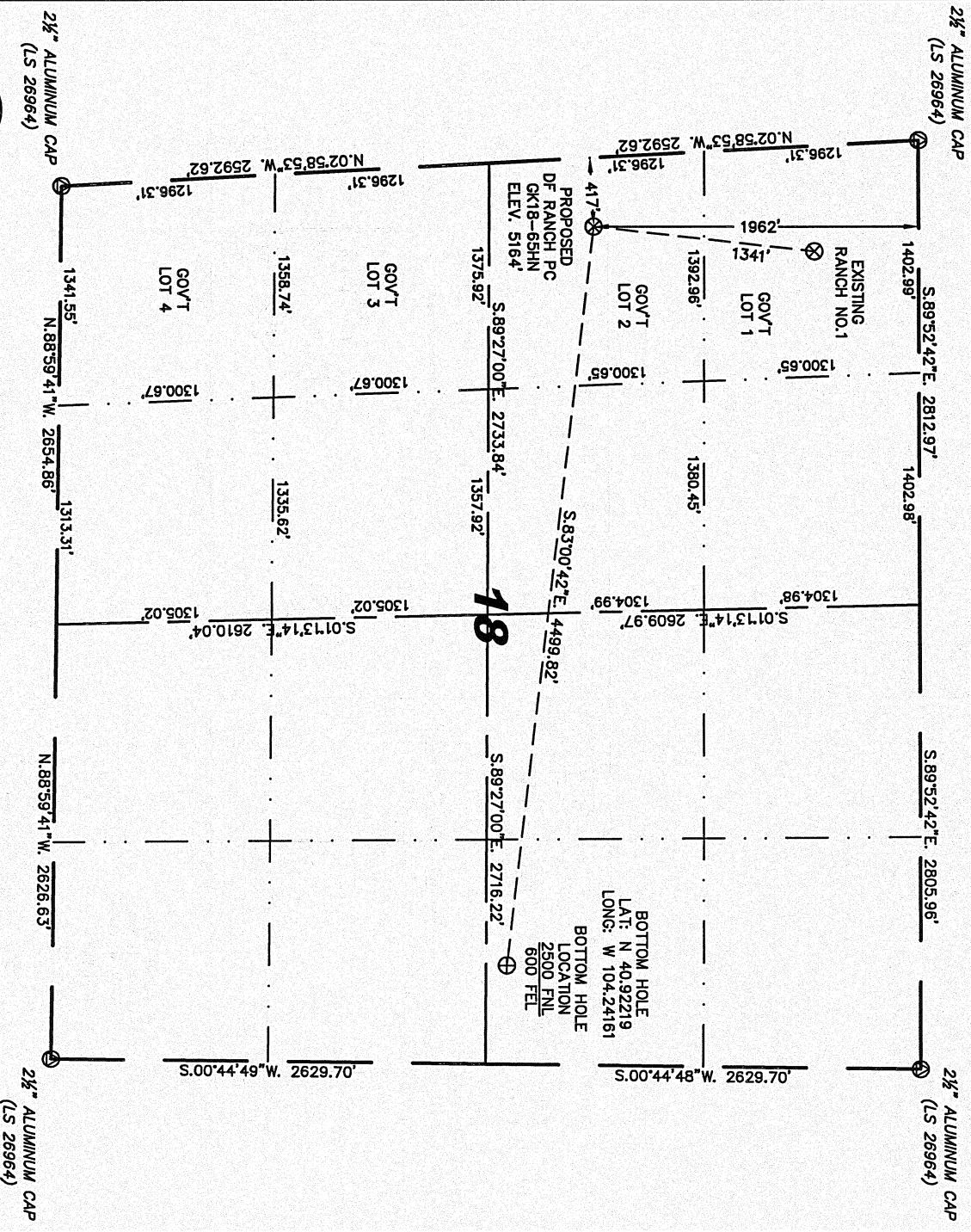
1102 West 19th Street P.O. BOX 2073

Cheyenne, Wyoming 82009

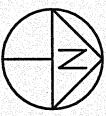
WELL LOCATION CERTIFICATE

THIS MAP DOES NOT REPRESENT A BOUNDARY SURVEY

SECTION 18
TOWNSHIP 11 NORTH
RANGE 61 WEST



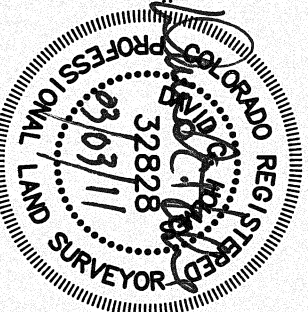
0 1000
Scale: 1" = 1000'



- NOTES:
- 1) BASIS OF BEARINGS FOR THIS MAP ARE BASED UPON GPS OBSERVATIONS MADE ON 10/25/2010 BETWEEN MONUMENTS LOCATED AT THE SOUTHEAST SECTION CORNER AND THE NORTHEAST SECTION CORNER OF SAID SECTION AND WITH ALL BEARINGS SHOWN HEREON RELATIVE THERE TO.
 - 2) COORDINATES SHOWN ARE COLORADO STATE PLANE (NORTH ZONE) NAD 83.
 - 3) ELEVATIONS ARE BASED UPON NGS OPUS SOLUTION NAD 83 DATUM.
 - 4) THE NEAREST EXISTING WELL IS: RANCH NO. 1, 1341 NORTH.
 - 5) SEE LOCATION DRAWING FOR ALL IMPROVEMENTS WITHIN VISIBLE IMPROVEMENTS LIMIT.
 - 6) THE LOCATION FALLS IN PASTURE LAND.

IN ACCORDANCE WITH A REQUEST FROM NATE MCCORKELL - NOBLE ENERGY INC. STELL SURVEYING SERVICES, LLC HAS DETERMINED THE LOCATION OF THE DE RANCH PC GK18-65HN WELL TO BE 1962' FNL, 417' FNL, AS MEASURED AT NINETY (90) DEGREES FROM THE SECTION LINES, SECTION 18, TOWNSHIP 11 NORTH, RANGE 61 WEST, 6TH PRINCIPLE MERIDIAN, WELD COUNTY, COLORADO.

I HEREBY CERTIFY THAT THIS WELL LOCATION CERTIFICATE WAS PREPARED BY ME, OR UNDER MY DIRECT SUPERVISION, THAT THE FIELD WORK WAS COMPLETED ON 10/25/2010, FOR AND ON BEHALF OF NOBLE ENERGY INC. THAT IT IS NOT A LAND SURVEY PLAT OR AN IMPROVEMENT SURVEY PLAT, AND THAT IT IS NOT TO BE RELIED UPON FOR ESTABLISHMENT OF FENCE, BUILDING, OR OTHER FUTURE IMPROVEMENT LINES.



NOTICE: According to Colorado law you MUST commence any legal action based upon any defect in this W.L.C. within three years after you first discover such defect. In no event may any action based upon any defect in this W.L.C. be commenced more than three years from the date of the certification shown hereon.

LEGEND

FOUND SURVEY MONUMENT PER MONUMENT RECORD - EXCEPTIONS NOTED.

Calculated Dimension

David C. Holmes
Professional Land Surveyor Registration No. 32828
State of Colorado

Completed 3/3/2011

JOB # 10086