

T5S, R95W, 6th P.M.

EnCana OIL & GAS (USA) INC.

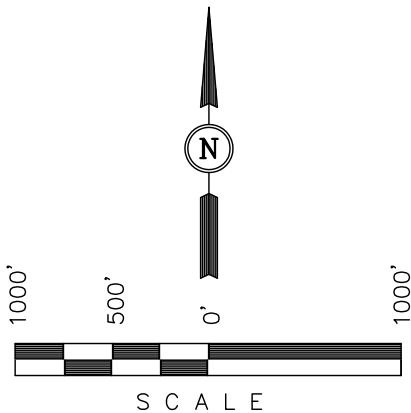
Well location, N. PARACHUTE DH05-20 G29 595  
595, located as shown in the SE 1/4 NE 1/4  
of Section 29, T5S, R95W, 6th P.M., Garfield  
County, Colorado.

BASIS OF ELEVATION

SPOT ELEVATION AT THE NORTHWEST CORNER OF SECTION  
30, T5S, R95W, 6th P.M. TAKEN FROM THE FORKED GULCH  
QUADRANGLE, COLORADO, GARFIELD COUNTY, 7.5 MINUTE  
SERIES (TOPOGRAPHICAL MAP) PUBLISHED BY THE UNITED  
STATES DEPARTMENT OF THE INTERIOR, GEOLOGICAL SURVEY.  
SAID ELEVATION IS MARKED AS BEING 5966 FEET.

BASIS OF BEARINGS

BASIS OF BEARINGS IS A G.P.S. OBSERVATION.



LINE TABLE		
LINE	BEARING	LENGTH
L1	N00°06'15"W	726.00'
L2	N00°05'49"W	712.80'
L3	N00°07'15"W	627.00'
L4	N00°06'58"E	758.92'
L5	S89°49'06"W	483.78'
L6	S89°49'06"W	660.00'
L7	N02°31'20"W	494.05'
L8	WEST	330.00'
L9	N00°03'21"E	490.23'

CERTIFICATE

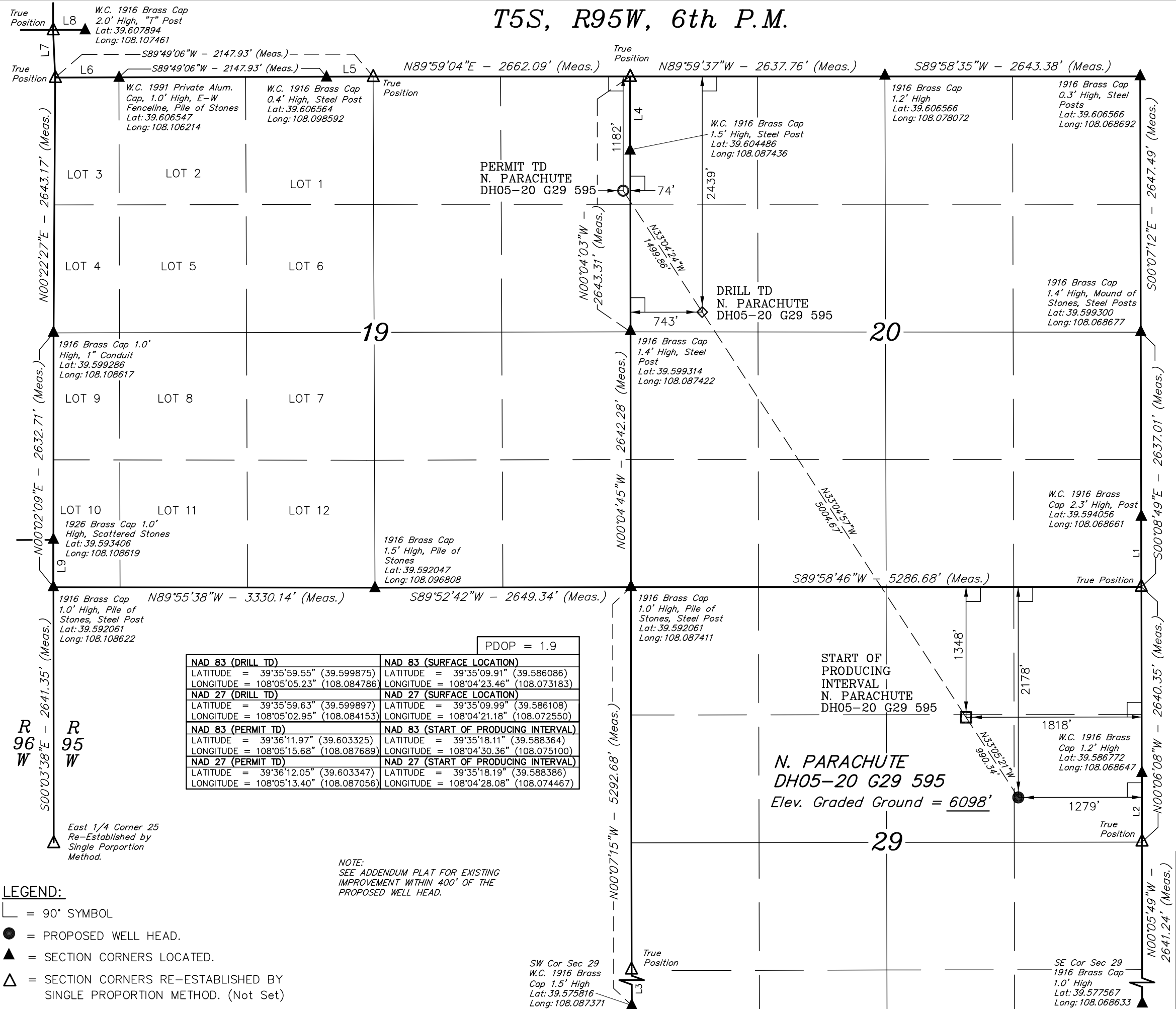
THIS IS TO CERTIFY THAT THE ABOVE PLAT WAS PREPARED FROM  
FIELD NOTES OF ACTUAL SURVEYS MADE BY ME OR UNDER MY  
SUPERVISION AND THAT THE SAME ARE TRUE AND CORRECT TO THE  
BEST OF MY KNOWLEDGE AND BELIEF.

REGISTERED LAND SURVEYOR  
REGISTRATION NO. 17492  
STATE OF COLORADO

Revised: 03-18-10 D.R.B.  
Revised: 03-09-10 D.R.B.

UINTAH ENGINEERING & LAND SURVEYING  
85 SOUTH 200 EAST - VERNAL, UTAH 84078  
(435) 789-1017

SCALE 1" = 1000'	DATE SURVEYED: 02-23-10	DATE DRAWN: 02-23-10
PARTY G.O. B.B. D.R.B.	REFERENCES G.L.O. PLAT	
WEATHER COLD	FILE EnCana OIL & GAS (USA) INC.	



LEGEND:

- └─ = 90° SYMBOL
- = PROPOSED WELL HEAD.
- ▲ = SECTION CORNERS LOCATED.
- △ = SECTION CORNERS RE-ESTABLISHED BY SINGLE PROPORTION METHOD. (Not Set)

NOTE:  
SEE ADDENDUM PLAT FOR EXISTING  
IMPROVEMENT WITHIN 400' OF THE  
PROPOSED WELL HEAD.

SW Cor Sec 29  
W.C. 1916 Brass  
Cap 1.5' High  
Lat: 39.575816  
Long: 108.087371

SE Cor Sec 29  
1916 Brass Cap  
1.0' High  
Lat: 39.577567  
Long: 108.068633

PDOP = 1.9	
NAD 83 (DRILL TD)	NAD 83 (SURFACE LOCATION)
LATITUDE = 39°35'59.55" (39.599875)	LATITUDE = 39°35'09.91" (39.586086)
LONGITUDE = 108°05'05.23" (108.084786)	LONGITUDE = 108°04'23.46" (108.073183)
NAD 27 (DRILL TD)	NAD 27 (SURFACE LOCATION)
LATITUDE = 39°35'59.63" (39.599897)	LATITUDE = 39°35'09.99" (39.586108)
LONGITUDE = 108°05'02.95" (108.084153)	LONGITUDE = 108°04'21.18" (108.072550)
NAD 83 (PERMIT TD)	NAD 83 (START OF PRODUCING INTERVAL)
LATITUDE = 39°36'11.97" (39.603325)	LATITUDE = 39°35'18.11" (39.588364)
LONGITUDE = 108°05'15.68" (108.087689)	LONGITUDE = 108°04'30.36" (108.075100)
NAD 27 (PERMIT TD)	NAD 27 (START OF PRODUCING INTERVAL)
LATITUDE = 39°36'12.05" (39.603347)	LATITUDE = 39°35'18.19" (39.588386)
LONGITUDE = 108°05'13.40" (108.087056)	LONGITUDE = 108°04'28.08" (108.074467)