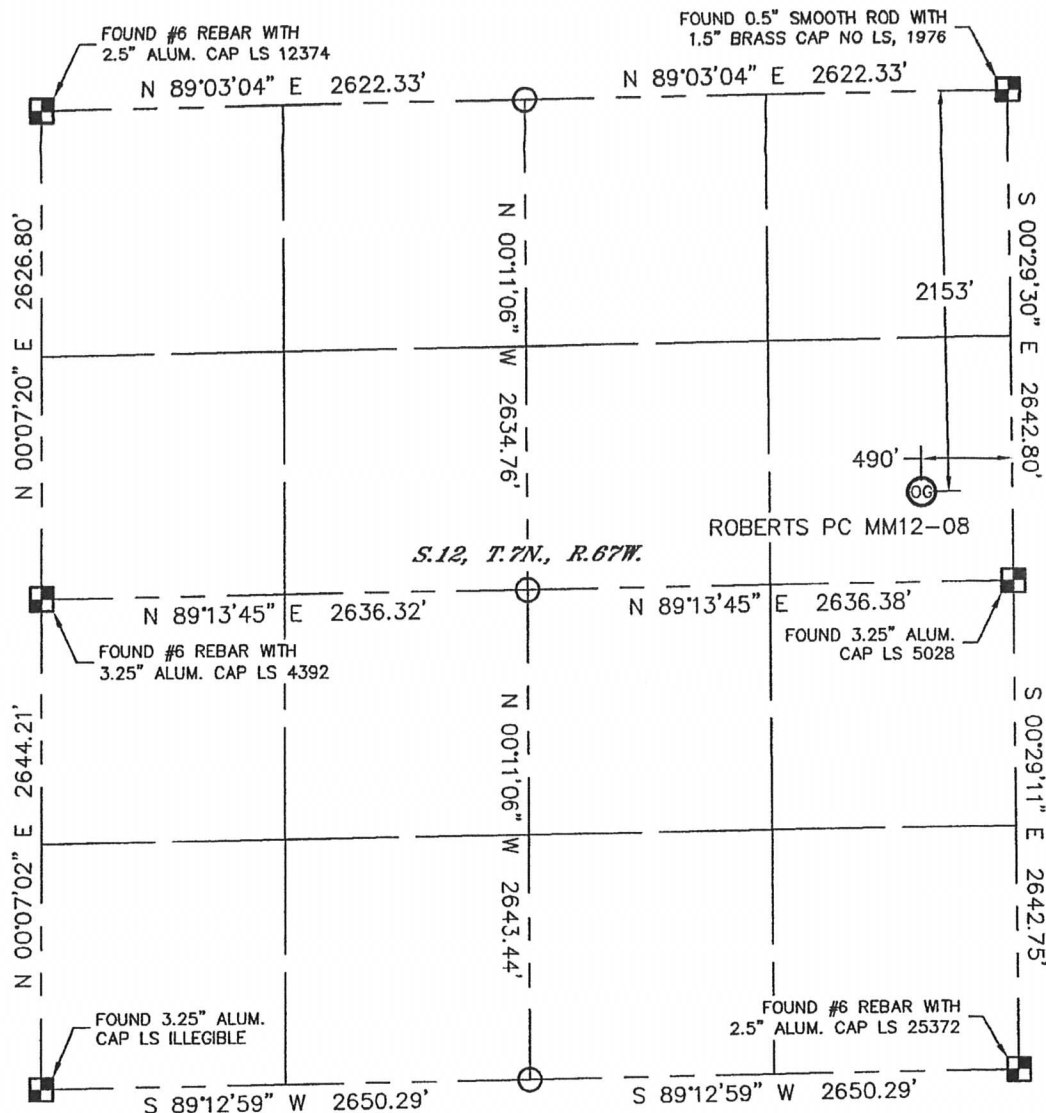


WELL LOCATION CERTIFICATE

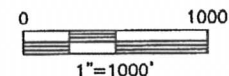
THIS MAP DOES NOT REPRESENT A BOUNDARY SURVEY

SECTION: 12
TOWNSHIP: 7N
RANGE: 67W



In accordance with a request from Joe Johnson with Noble Energy Inc., Lat40°, Inc. has determined the surface location of the ROBERTS PC MM12-08 to be 2153' from the NORTH line and 490' from the EAST line as measured at right angles from the section lines of Section 12, Township 7 North, Range 67 West of the Sixth Principal Meridian, County of Weld, State of Colorado.

I hereby state that this Well Location Certificate was prepared by me, or under my direct supervision, that the fieldwork was completed on 1/20/11, for and on behalf of Noble Energy Inc. That this is not a Land Survey Plat or an Improvement Survey Plat, and that it is not to be relied upon for establishment of fence, building, or other future improvement lines.



NOTE:

- 1) Bearings shown are Grid Bearings of the Colorado State Plane Coordinate System, North Zone, North American Datum 1983/2007. The lineal dimensions as contained herein are based upon the "U.S. Survey Foot."
- 2) Ground elevations are based on an observed GPS elevation (NAVD 1988 DATUM).
- 3) NEAREST EXISTING WELL: NONE WITHIN QUARTER SECTION
- 4) IMPROVEMENTS: See LOCATION DRAWING for all visible improvements within 400' of disturbed area.
- 5) SURFACE USE: DRYLAND CROP
- 6) INSTRUMENT OPERATOR: BRIAN BRINKMAN

SURFACE LOCATION

LATITUDE: 40.59015°N
LONGITUDE: 104.83357°W
PDOP: 2.0
ELEV: 5144'
1/4, 1/4: SE1/4NE1/4
NEAREST PROPERTY LINE: 379' NORTH



NOTE

According to Colorado law, you must commence any legal action based upon any defect in this W.L.C. within three years after you discover such defect. In no event, may any action based upon any defect in this survey be commenced more than ten years after the date of the certificate shown hereon. (13-80-105 C.R.S.)

LEGEND



= ALIQUOT MONUMENT AS DESCRIBED



= CALCULATED POSITION

Brian T. Brinkman—On behalf of Lat40°, Inc.
Colorado Licensed Professional
Land Surveyor No. 38175

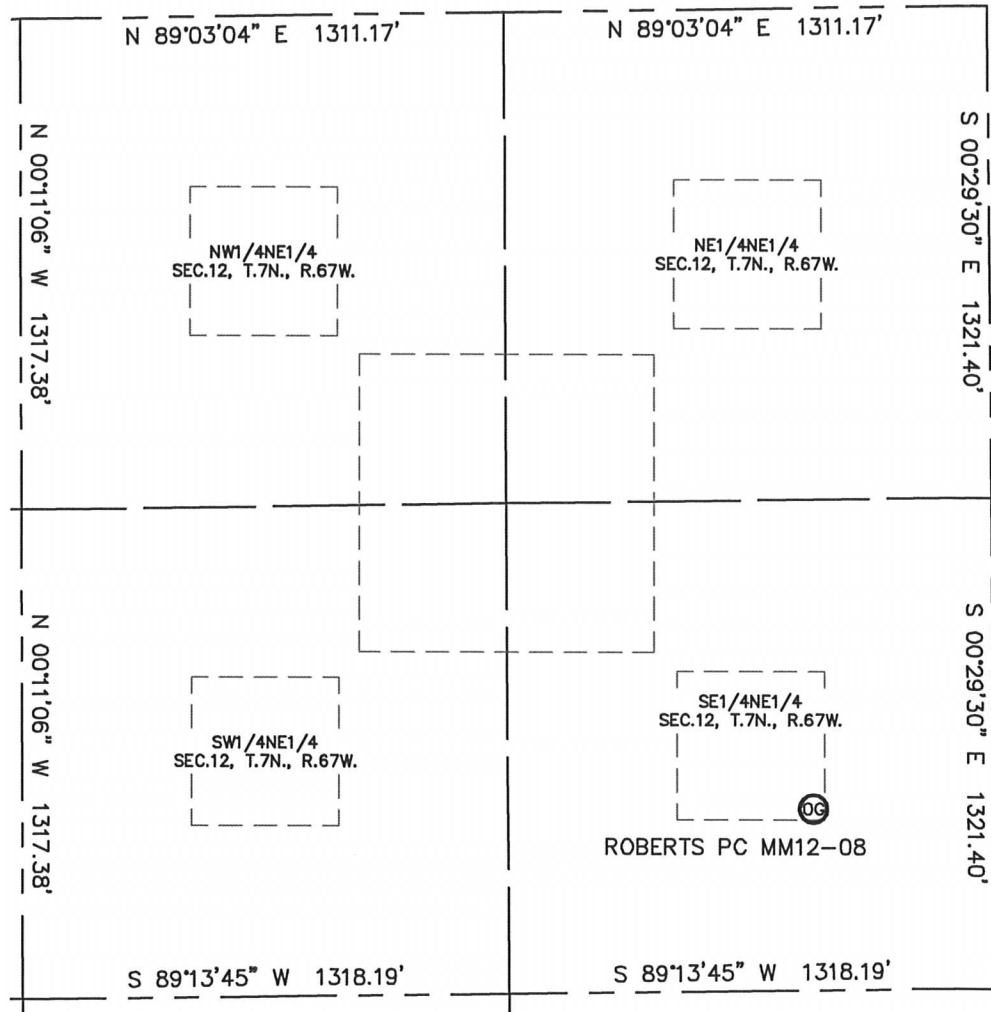
PROJECT#: 2010183

Lat40°, Inc. 1635 Foxtrail Drive, Suite 325 Loveland, CO 80538

SITE SKETCH

ROBERTS PC MM12-08

SECTION: 12
TOWNSHIP: 7N
RANGE: 67W



NOTE: NO EXISTING WELLS WITHIN QUARTER SECTION

